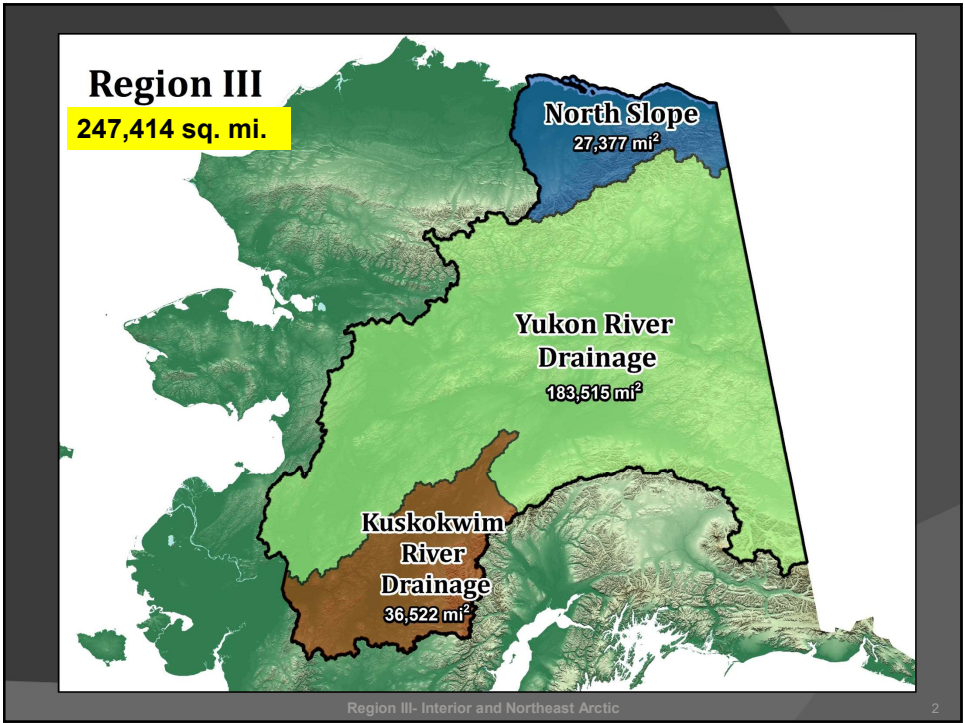


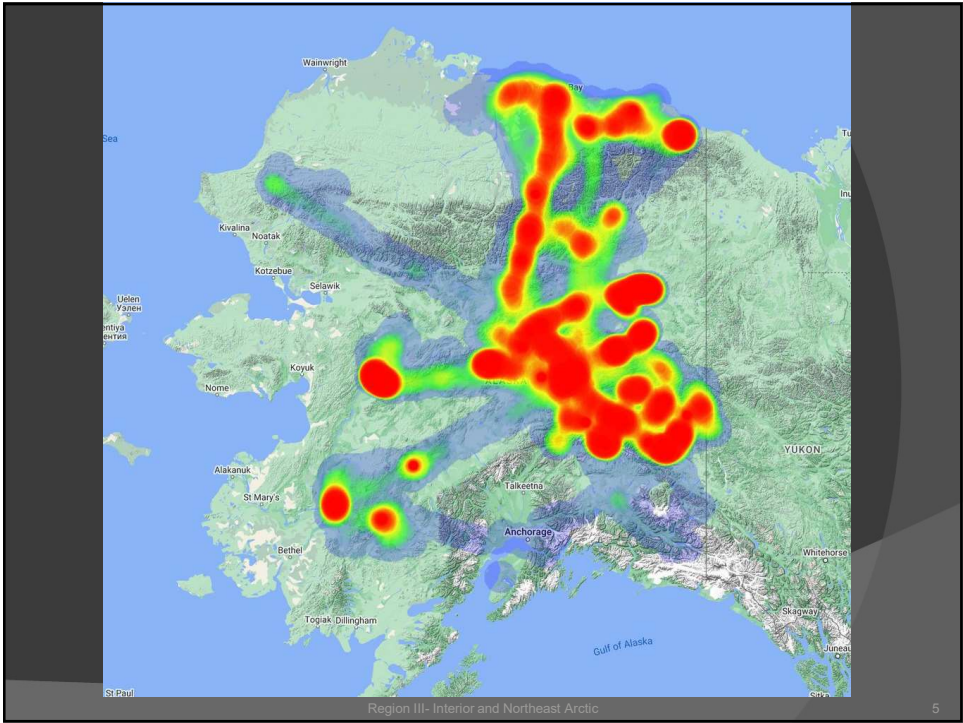


1

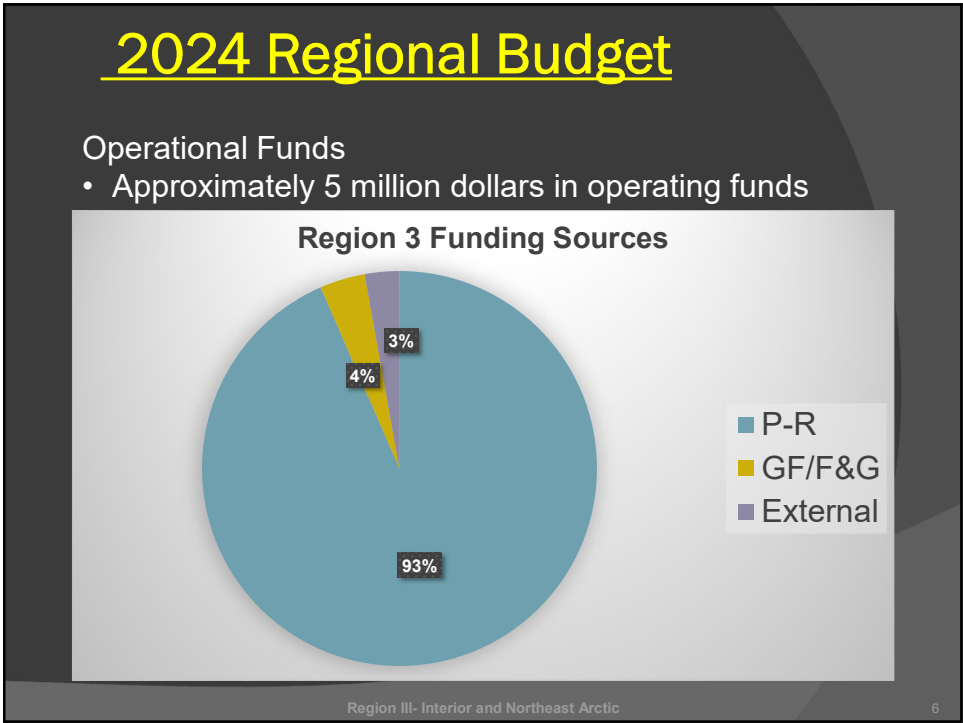


2

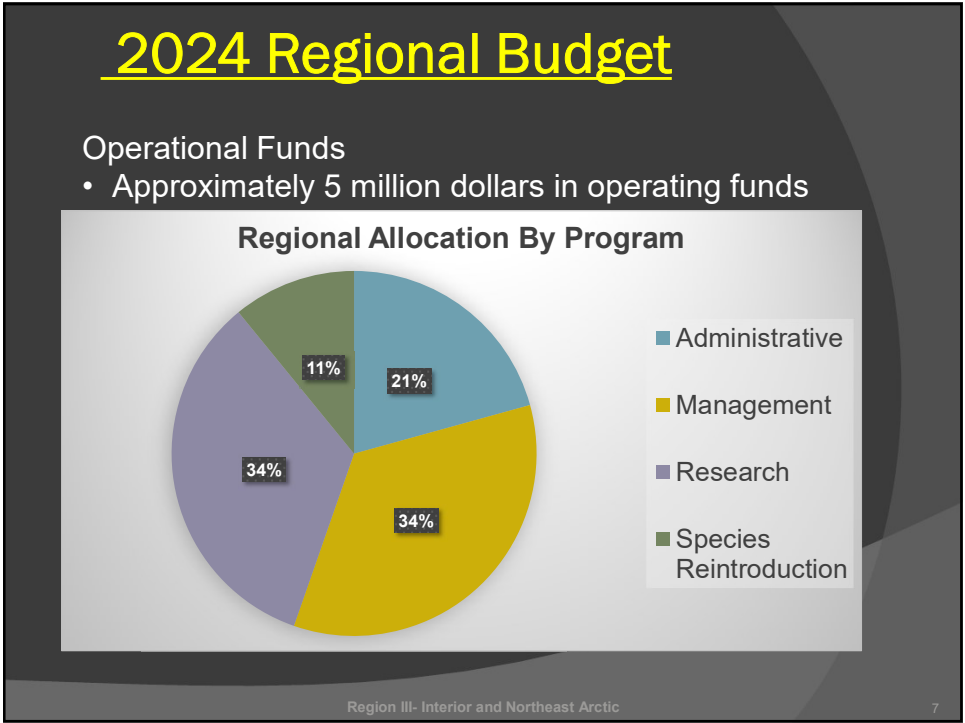




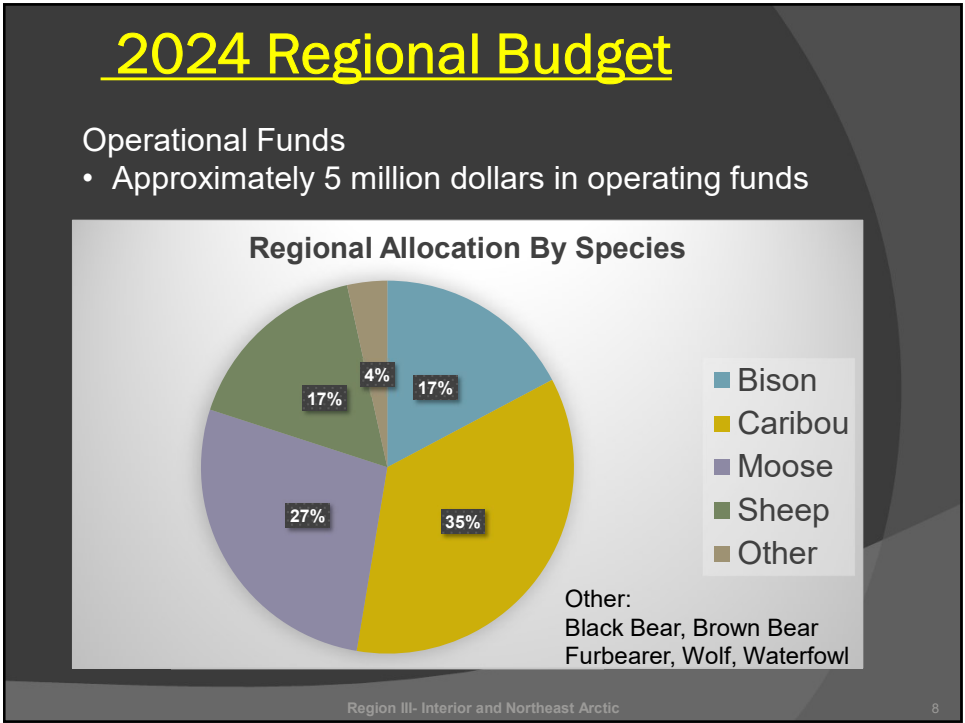
5



6



7



8

# Customer service – RY 22

- Drawing and registration hunts:
  - 57 Drawing Hunts
  - 24 Registration Hunts
  - 4 Tier II hunts
  - 1 Targeted Hunt
  - 11,712 total permits in 2023
- Sealing
  - 955 furbearers
  - 330 bears
  - 104 Sheep



Jessica Wagner

Region III- Interior and Northeast Arctic

9

9

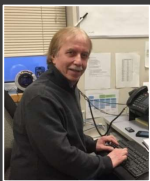
# Behind the Scenes – Admin Staff



Jennifer Luchansky



Brenda Viers



Jerry Rawson



Garrett Aragon



Dawn Caikoski

Region III- Interior and Northeast Arctic

10

10

## Behind the Scenes – Front Desk



Lindsey Dreese



Bob Hunter



Austin Edson



Caroline Wilford



Ryan Adam



Forrest Rosenbower

Region III- Interior and Northeast Arctic

11

11

## Behind the Scenes – Creamer’s Field



Clint Cooper



Nate Lashomb



Mark Ross








Region III- Interior and Northeast Arctic

12

12


# Behind the Scenes

## Hunter Information and Training / Shooting Range



Tom Halverson      John Wyman      Deo Henderson      Josh Konefal      Jacob Davis

## Shooting Range



Region III- Interior and Northeast Arctic

13

13

# Behind the Scenes

## Education and Outreach



Mike Taras      Jen Curl

## Veterinary Services



Dr. Kimberlee Beckmen      Cassie Duncan      Katrina Campbell      Dr. Camilla Lieske

Region III- Interior and Northeast Arctic

14

14

# GIS and Biometric Staff



Jennifer Roach



Andrew Bishop



Lainey Gallenberg

15

# Active Research Projects

On going monitoring of McGrath/19D Intensive Management

- McGrath "2.0"; detailed monitoring of moose and habitat
- Effects of ongoing wolf control and burns, increasing moose density



Danny Caudill

16

## Active Research Projects

### On going monitoring of 20A high density moose population

- How will this moose population respond to reductions in density?
- How responsive are our primary moose nutritional indices to changes in density?



Graham Frye  
Region III- Interior and Northeast Arctic

17

17

## Active Research Projects

### Bull moose movement and distribution in relation to hunter access

- Where are the bulls that we count in the winter during hunting season?
- What patterns of dispersal do we see in different age classes?
- What proportion of the bulls are accessible?
- Three study areas (19D, 20B, 21D) / relationship with IM



Forrest Rosenbower  
Region III- Interior and Northeast Arctic

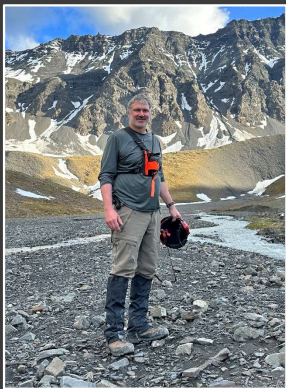
18

18

# Active Research Projects

## Dall's Sheep Ecology

- Are population dynamics and demographics different between hunted and unhunted segments of the population?
- Establish long-term monitoring protocols in Brooks and Alaska Range



Brad Wendling



Joe Want

Region III- Interior and Northeast Arctic

19

19

# Active Research Projects

## North Slope Grizzly Bear use of areas in and around industry

- Grizzly bear demography: survival and reproductive output of north slope bears
- Using genetics to investigate social learning of conflict behavior in grizzly bears
- Feasibility of predicting grizzly den locations



K Nicholson



Dick Shideler

Region III- Interior and Northeast Arctic

20

20

## Active Research Projects

Fortymile Caribou: demographic changes in response to changing herd size and predator abundance

- Are nutritional indices improving after reductions in herd size?
- What is a reasonable population objective, given nutritional constraints?
- How is calf survival effected by nutritional condition of the herd?
- How is calf survival effected by rebounding wolf numbers?



Torsten Bentzen

Torsten and Jeff Gross

Region III- Interior and Northeast Arctic


21

21

## Active Research Projects

Intensive Management Evaluation - Statewide

- What can we learn from past IM efforts?
- What worked? What didn't?
- In situations where prey species benefited, did humans?



Tom Paragi

Region III- Interior and Northeast Arctic

22

22

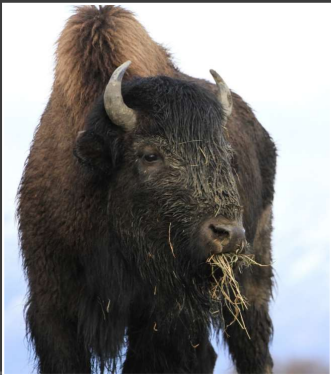
# Graduate Projects

- Bull Moose Distribution – Forrest Rosenbower
- Dall Sheep Movement Ecology – Boomer Hesley
- Factors Influencing Bison Productivity – Clint Cooper
- Caribou Distribution in Relation to Hunting Pressure – Jeff Wells

23

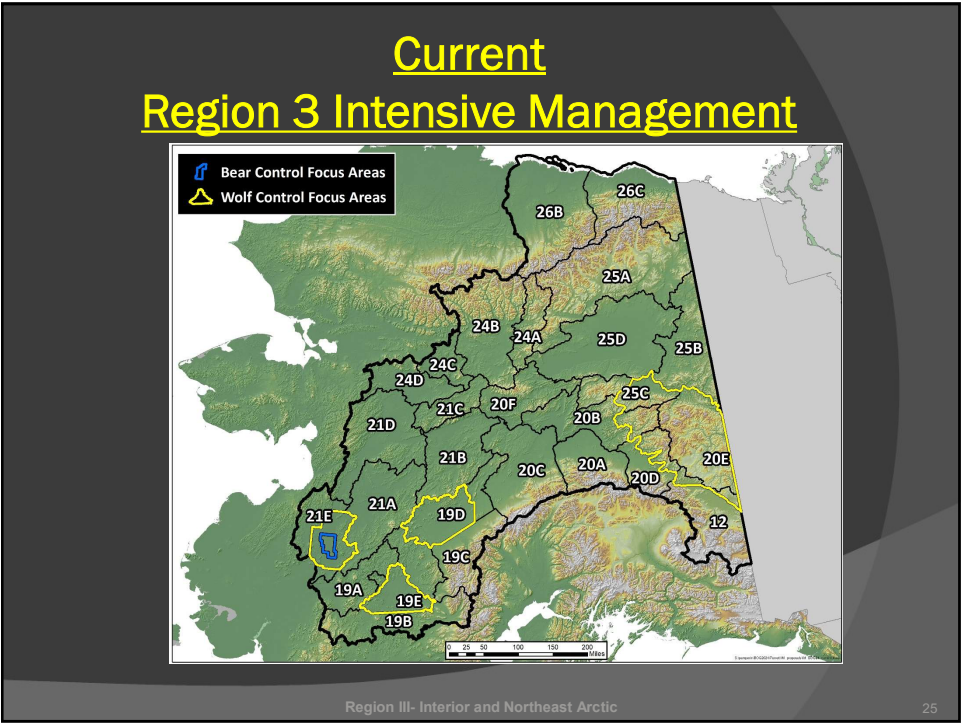
# Wood Bison Reintroduction

- Continued efforts to monitor Innoko population
- Working toward additional releases
- Importing ~40 yearlings in April from Canada



Tom Seaton and Luke Rogers

24



25

### Current Region 3 Intensive Management Pt. I

21E/GASH

- Has never been active
- Remained above the threshold of 1.0 moose / sq. mi. since approved

Upper Yukon/Tanana (Fortymile Caribou)

- Nonlethal wolf control 1997-2001, public wolf control for moose RY2004-05
- Wolf control expanded for caribou RY2006-17, agency control RY2007-17
- Density dependence concerns remain despite intentional herd reduction RY2020-21
- Currently inactive

Region III- Interior and Northeast Arctic

26

Current  
Region 3 Intensive Management Pt. II

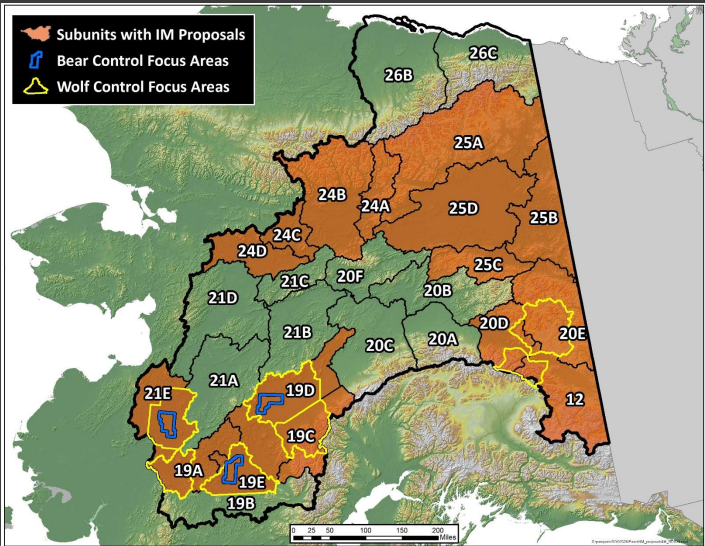
- 19E / Sleetmute (moose)
- Started in RY2004
  - No response to wolf control observed in moose population by 2011
  - Agency bear control efforts in 2013 & 2014
  - Responses seen in Calf:Cow ratios, and later in BCFA moose abundance
  - Currently active (wolf control)—moose below program objective, harvest far below objective, moose densities in BCFA high
- 19D / McGrath (moose)
- Started in RY2003, including wolf control and nonlethal bear removal
  - Moose abundance doubled by 2009, moose harvest doubled by 2015
  - Harvest success has been high, but harvest remains below program objective
  - Currently active (wolf control)

Region III- Interior and Northeast Arctic

27

27

Proposed  
Region 3 IM/Predator Control



Region III- Interior and Northeast Arctic

28

28

## Closing Comments

- The region is currently well staffed and well funded
- Funding vs. staff capacity
- Staff turnover at many positions
- Federal closures
- AC's voting against antlerless hunts
- Recent research focus on male ungulates
- Population declines in most species, in many areas – prospects for recovery?

Region III- Interior and Northeast Arctic

29

29

# Questions?



30