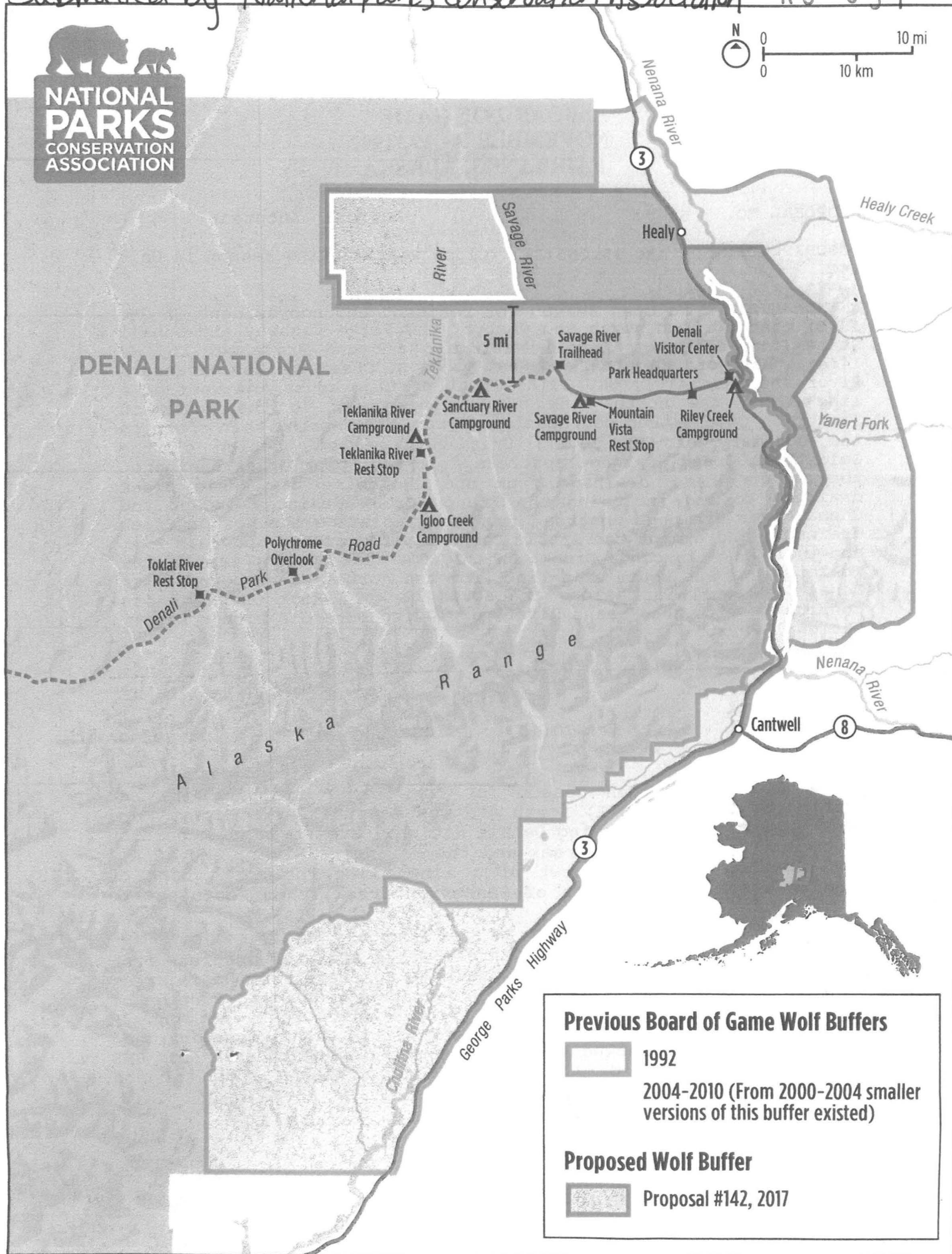




**NATIONAL  
PARKS**  
CONSERVATION  
ASSOCIATION



**SUMMARY OF ACTIONS  
BOARD OF GAME  
NOVEMBER 9 - 19, 1992  
FAIRBANKS, ALASKA**

**PROPOSAL NO.**      5

**ACTION:**    Adopted

**DESCRIPTION:**    5 AAC 85.056(3).    Close wolf hunting season in Unit 14C.

**AMENDMENTS:**    No open season for resident and nonresident in GMU 13(E) that portion north and west of the Parks Highway and Denali State Park excluding Denali National Park and Preserve; in GMU 14(A), that portion north and west of Moose Creek and the Matanuska River and GMU 14(C); GMU 20(A), that portion south and west of a line along the north bank of Lignite Creek to the mouth of Sanderson Creek, then southeast to Pyramid Mountain, then south to the boundary of GMU 20(A); Unit 20(B), that portion of the Goldstream Creek drainage upstream from the Spier Creek drainage, the Tanana River drainage from and including the Rosie Creek drainage to and including the French Creek drainage except the Chena River drainage upstream from and including the Horner Creek drainage, and except the Little Chena river drainage upstream from and including Anaconda Creek; Unit 20(C), that portion east of the Toklat River and south of a line from the northeastern boundary of Denali National Park along the south bank of Rock Creek to its confluence with the Nenana River, excluding portions within Denali National Park.

-----  
**PROPOSAL NO.**      6

**ACTION:**    Adopted

**DESCRIPTION:**    5 AAC 84.270(13).    Close the wolf trapping season in Unit 14C.

**AMENDMENTS:**    No open season for fur bearer trapping in that portion of the GMU 13(E) north and west of the Parks Highway and Denali State Park excluding Denali National Preserve; that portion north and west of Moose Creek and the Matanuska River; GMU 20(A), that portion south and west of a line along the north bank of Lignite Creek to the mouth of Sanderson Creek, then southeast to

Pyramid Mountain, then south to the boundary of GMU 20(A); GMU 20(B), that portion of the Goldstream Creek drainage upstream from Martin Siding, the Tanana River drainage upstream from Rosie Creek to and including the French Creek drainage except that portion of the Chena River drainage upstream from Horner Creek and Jenny M Creek and excluding that portion of the Little Chena River drainage upstream from and including the drainage of Anaconda Creek; GMU 20(C), that portion of the Nenana River drainage south of and including the Slate Creek drainage.