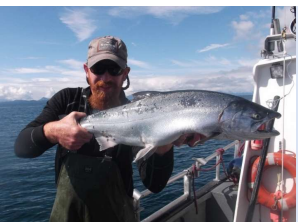


Overview of Sport Fisheries in the Prince William Sound Management Area

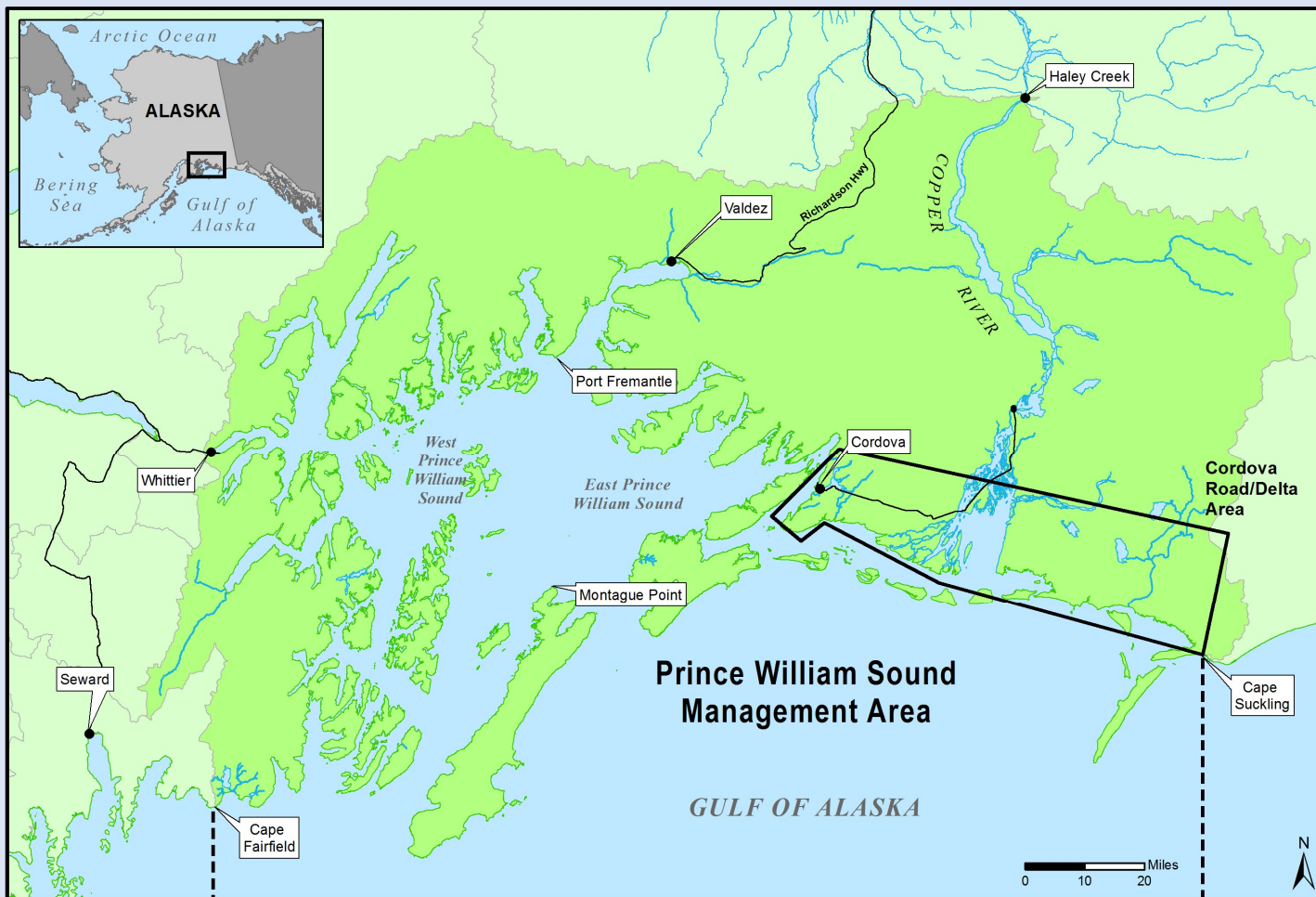


Brittany Blain-Roth
Prince William Sound Area Manager
Division of Sport Fish
ADF&G Anchorage Office

RC 3 & Tab 12

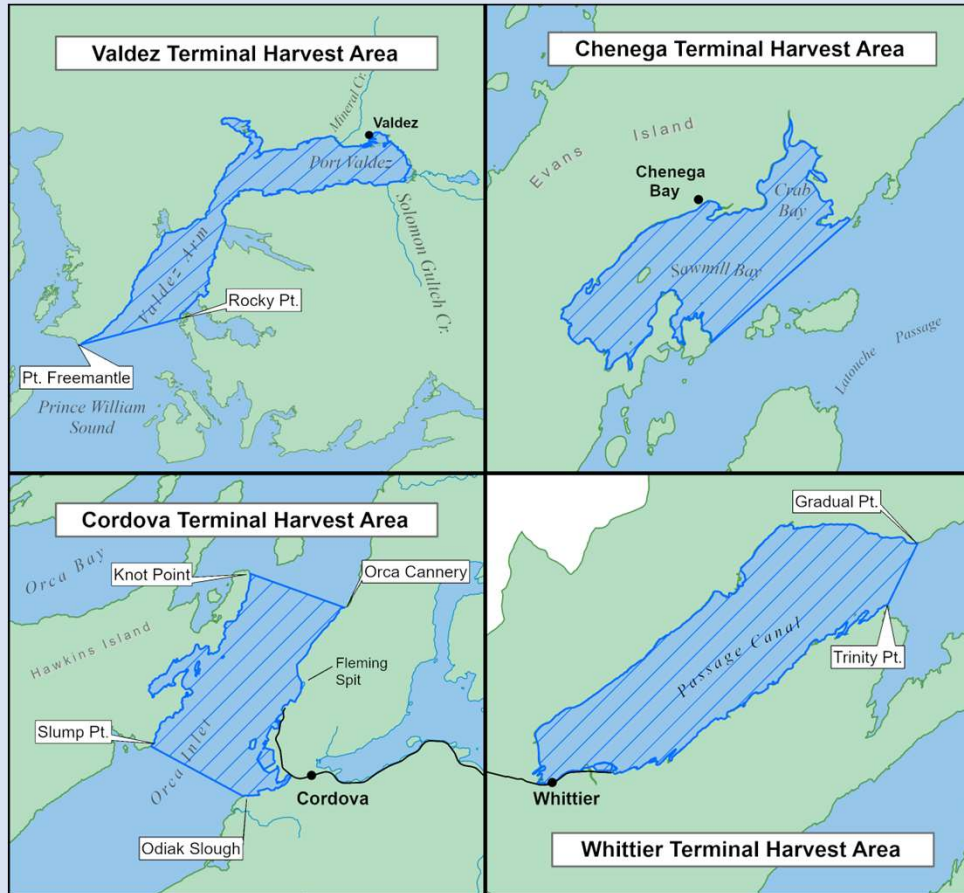


Prince William Sound Management Area (PWSMA) Division of Sport Fish

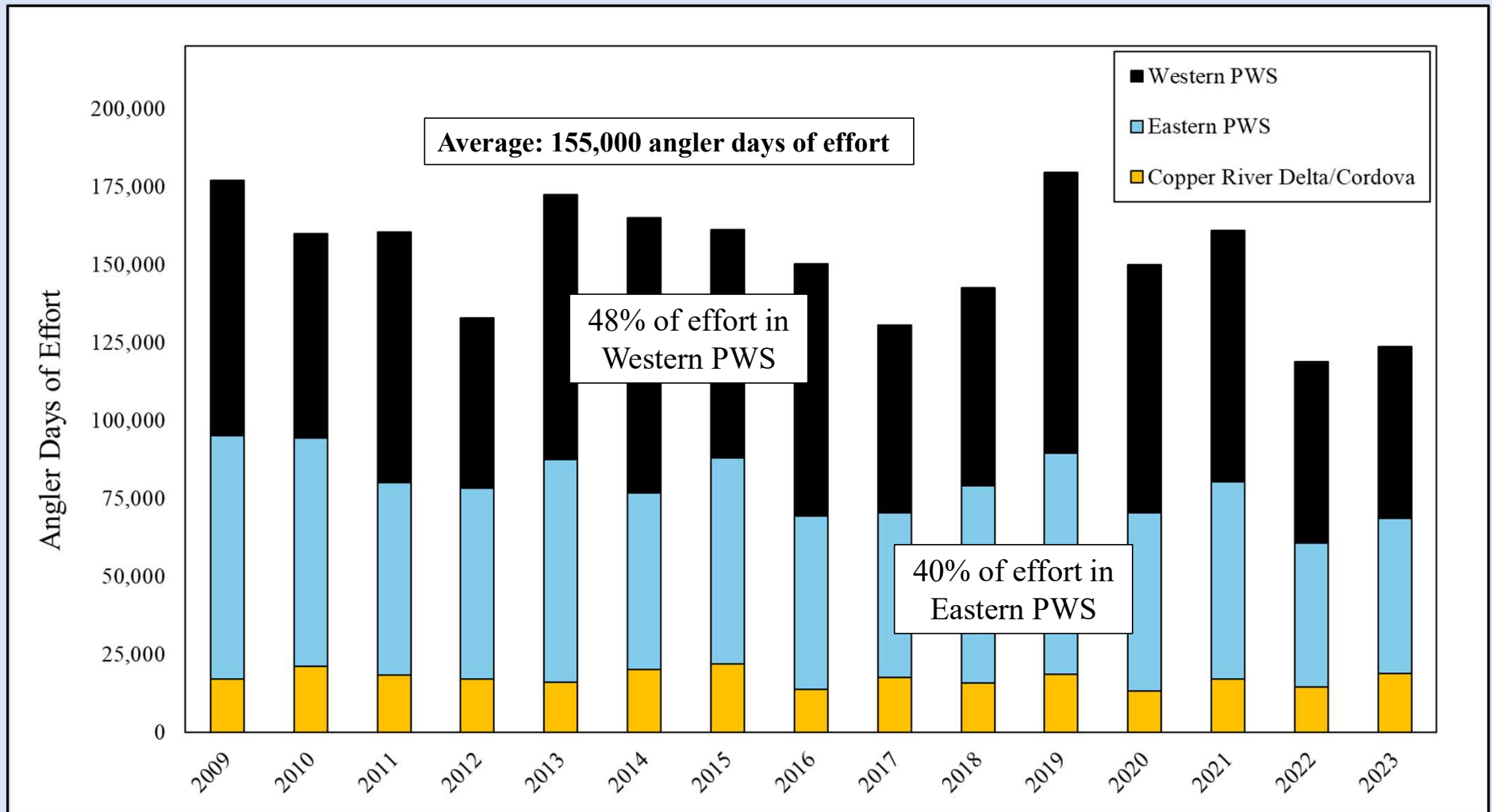


RC 3 & Tab 12

Terminal Harvest Areas (THA)



PWSMA Sportfishing Effort (SWHS)



RC 3 & Tab 12

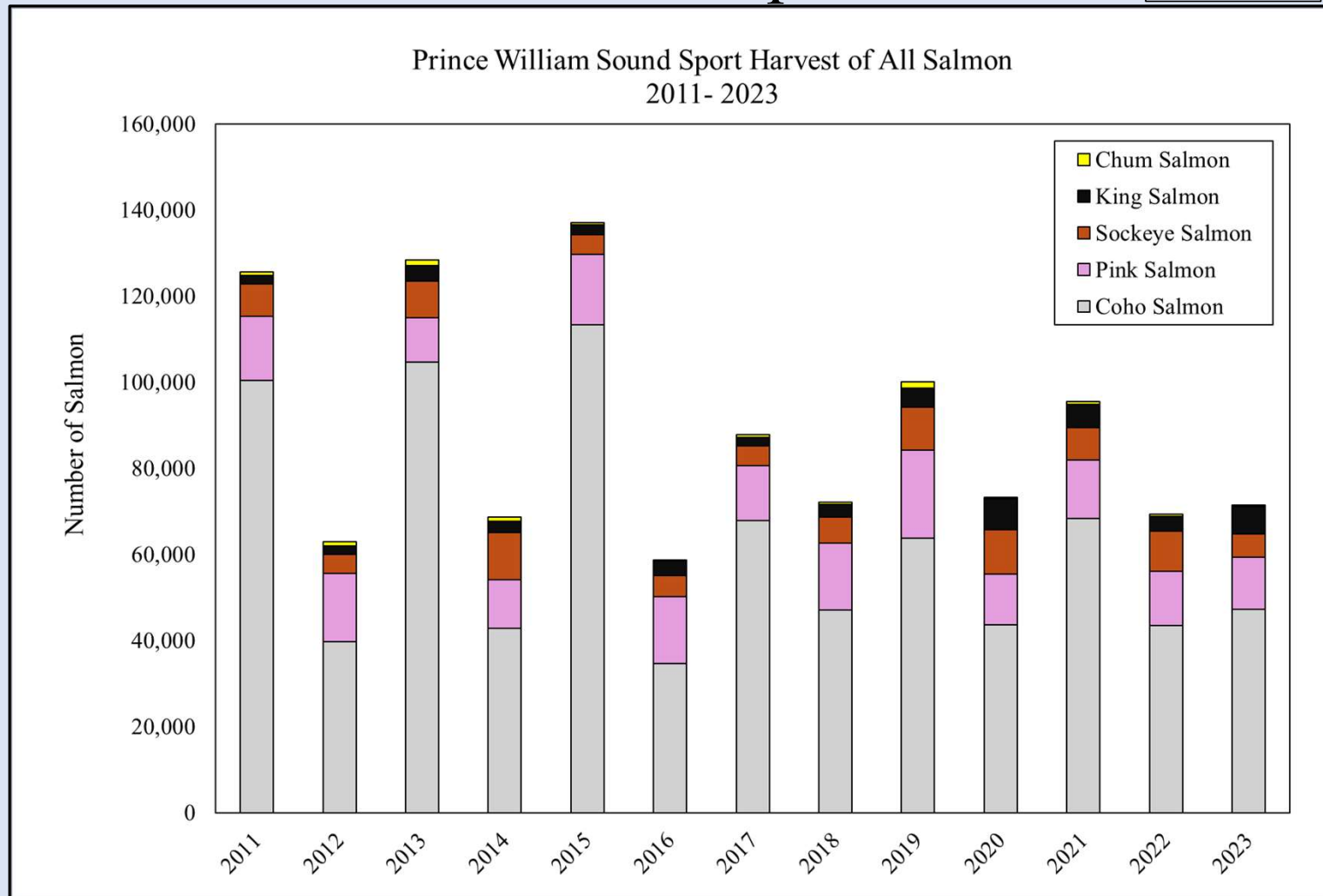
PWSMA Sport Fish Salmon Proposals

- Proposal 83: Use of 2 rods for salmon (residents only)
- Proposal 84: Prohibit retention of king salmon and rockfish by charter and crew
- Proposal 85: Increase possession limit to 6 for coho salmon
- Proposals 79–81: Main Bay
- Proposals 86–88: Copper River Delta coho salmon

*Rockfish presentation (next) covering data relevant to proposals 27-29 and 82

PWSMA Salmon Sport Harvest

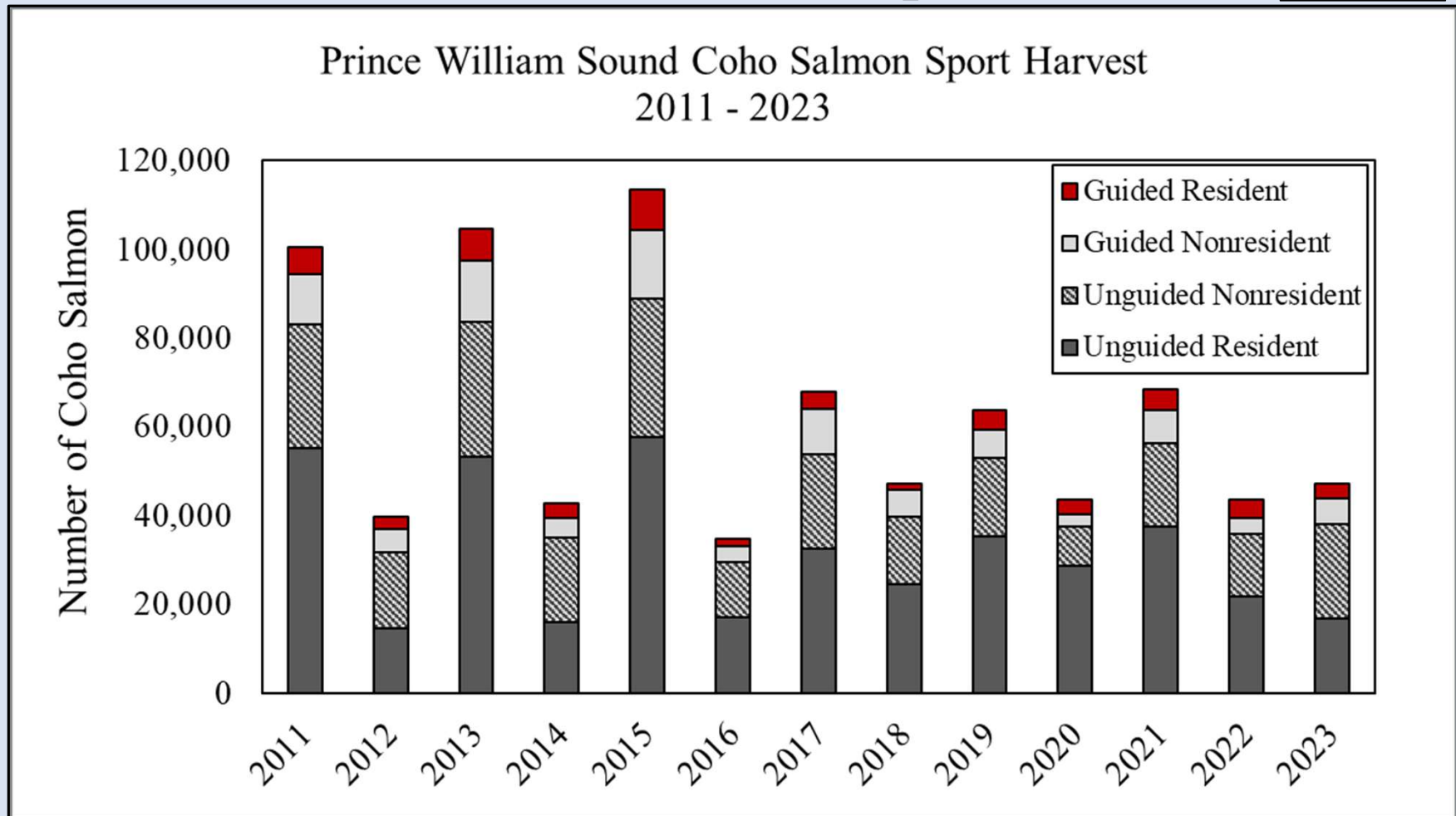
*Proposal 83



RC 3 & Tab 12

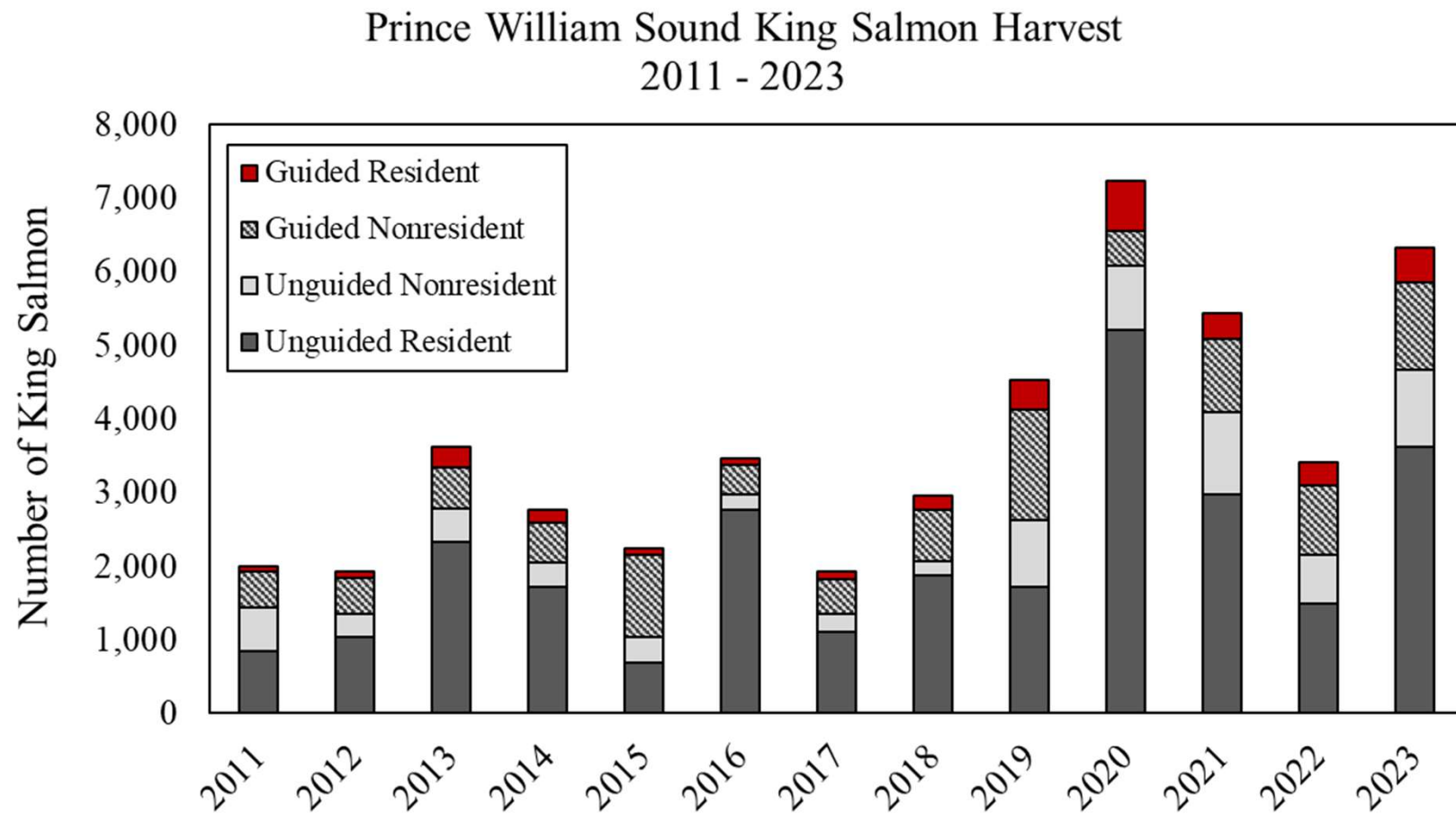
PWSMA Coho Salmon Sport Harvest

*Proposal 85

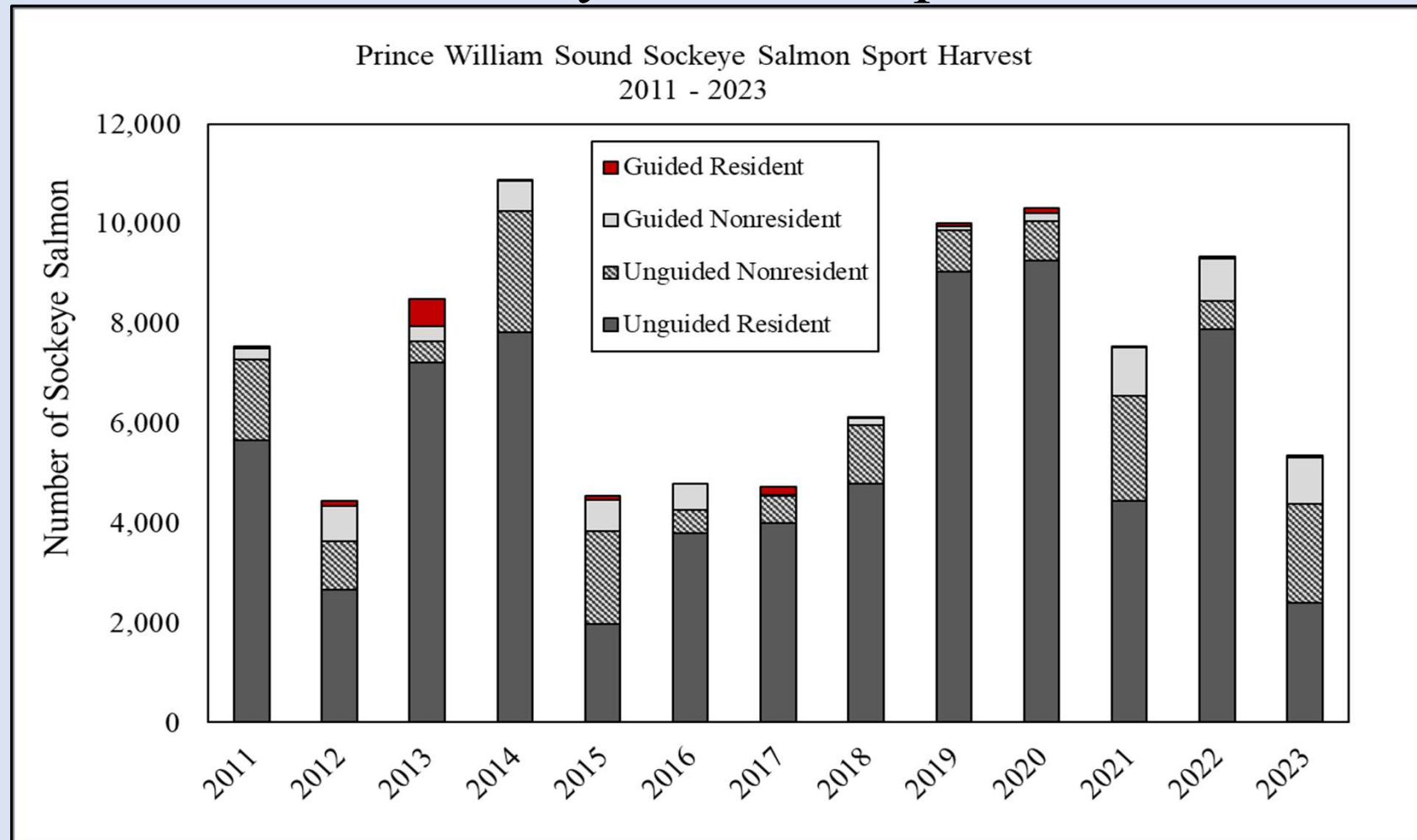


PWSMA King Salmon Sport Harvest

*Proposal 84



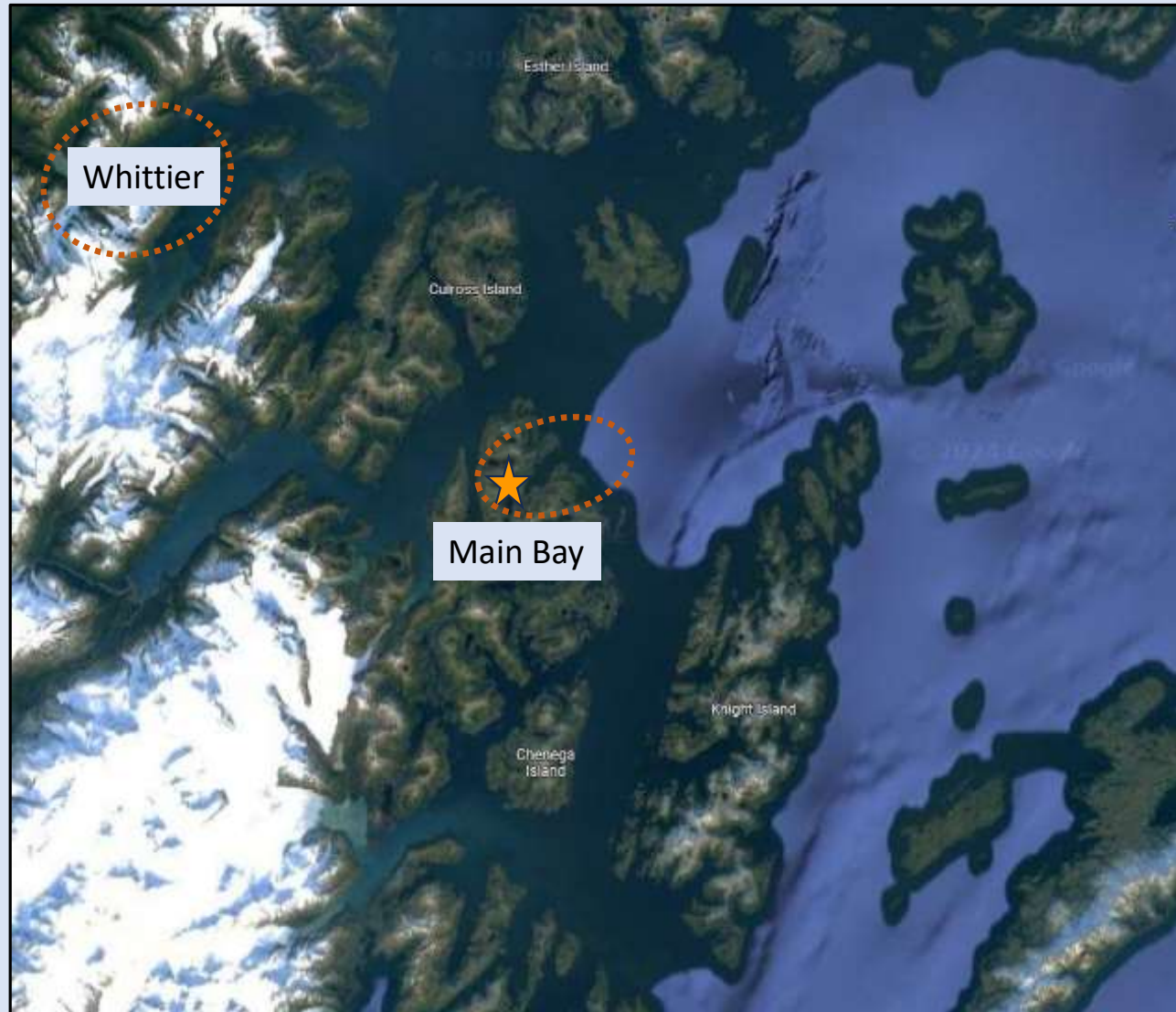
PWSMA Sockeye Salmon Sport Harvest *Proposals 80-81



Main Bay

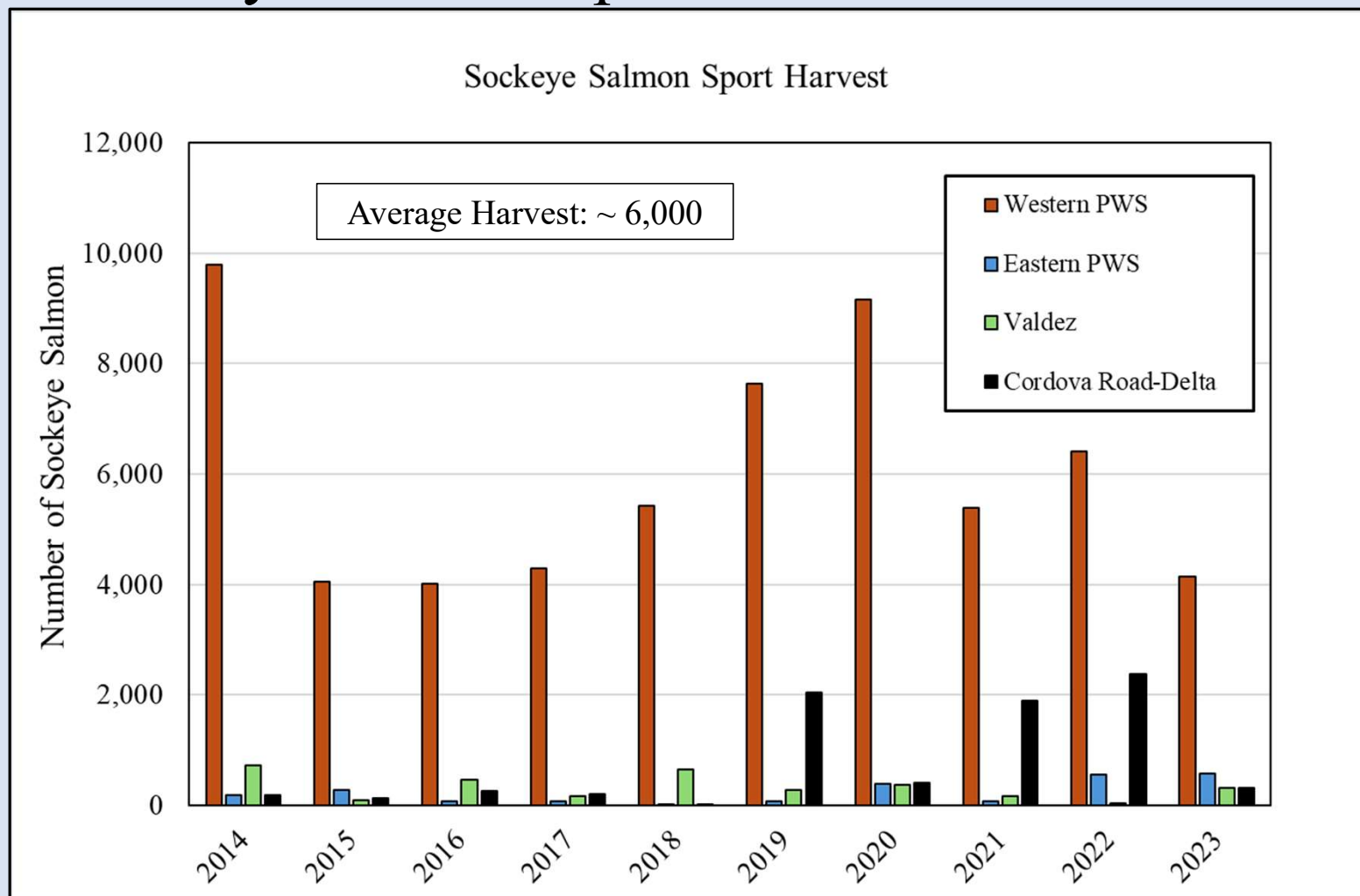
- Located ~30 miles from Whittier
- Peak season for sport fishing is mid June – mid July
- No regulatory action has been taken in the sport fishery (restrictions or liberalizations)

*Proposals 79-81



Sockeye Salmon Sport Harvest in PWSMA

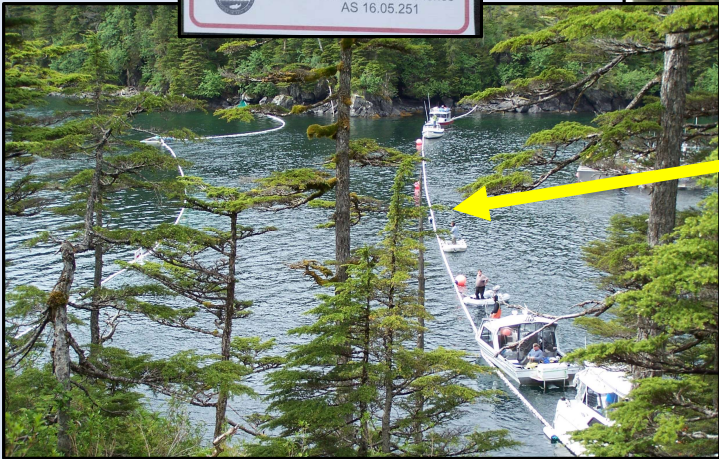
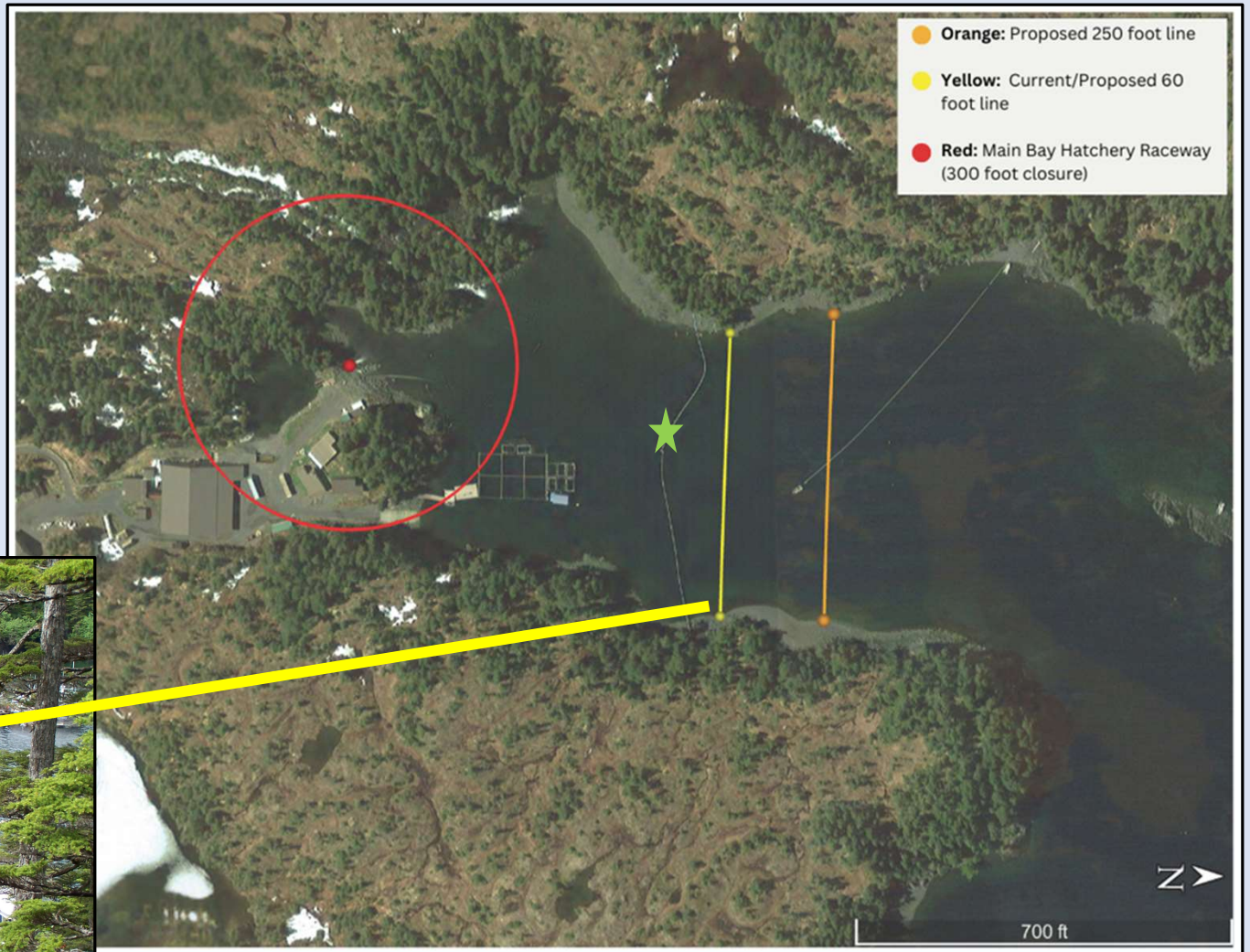
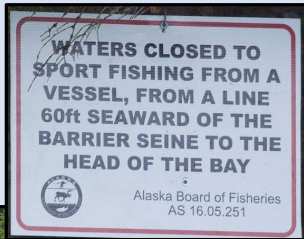
*Proposals 80-81



RC 3 & Tab 12

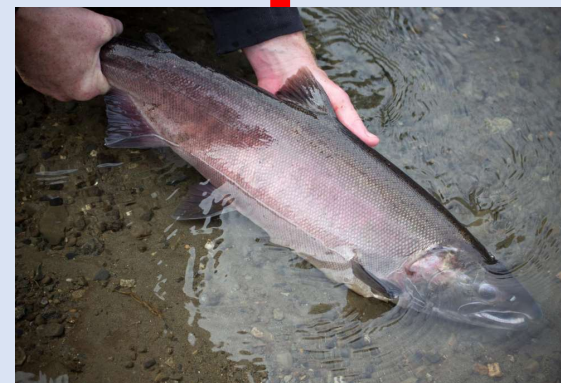
Main Bay

*Proposals 80-81

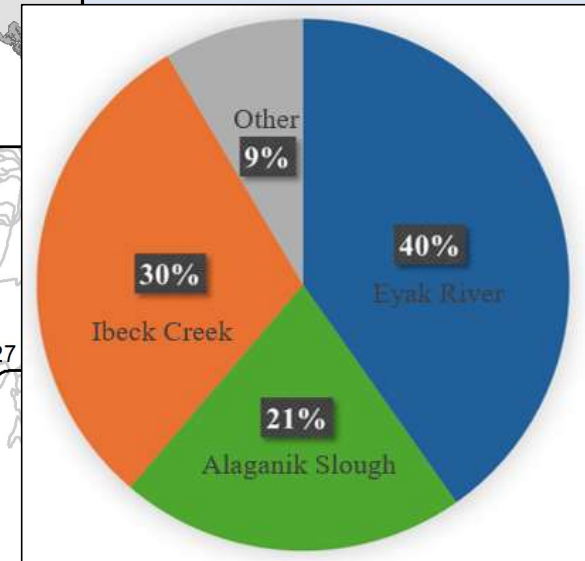
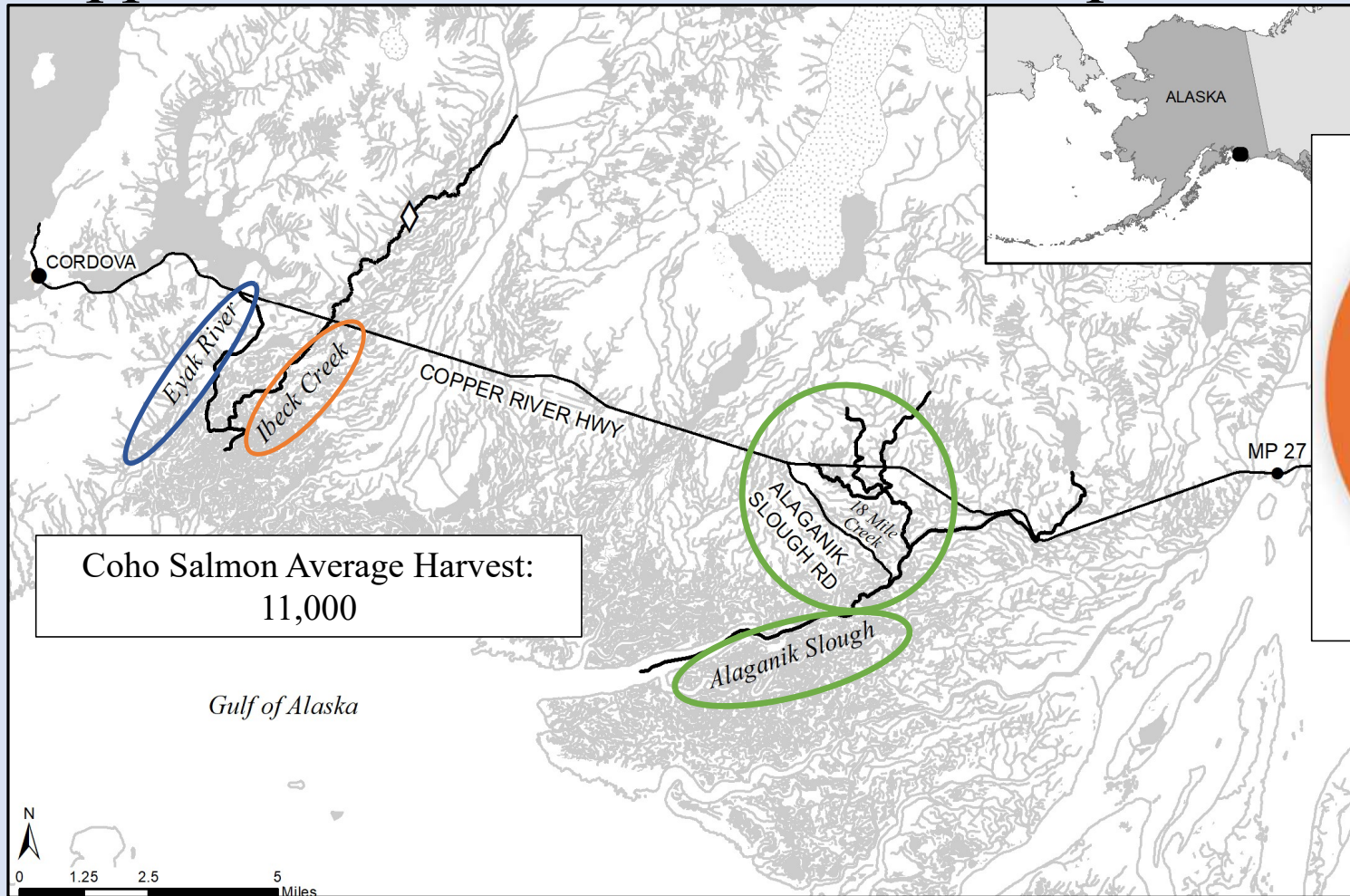


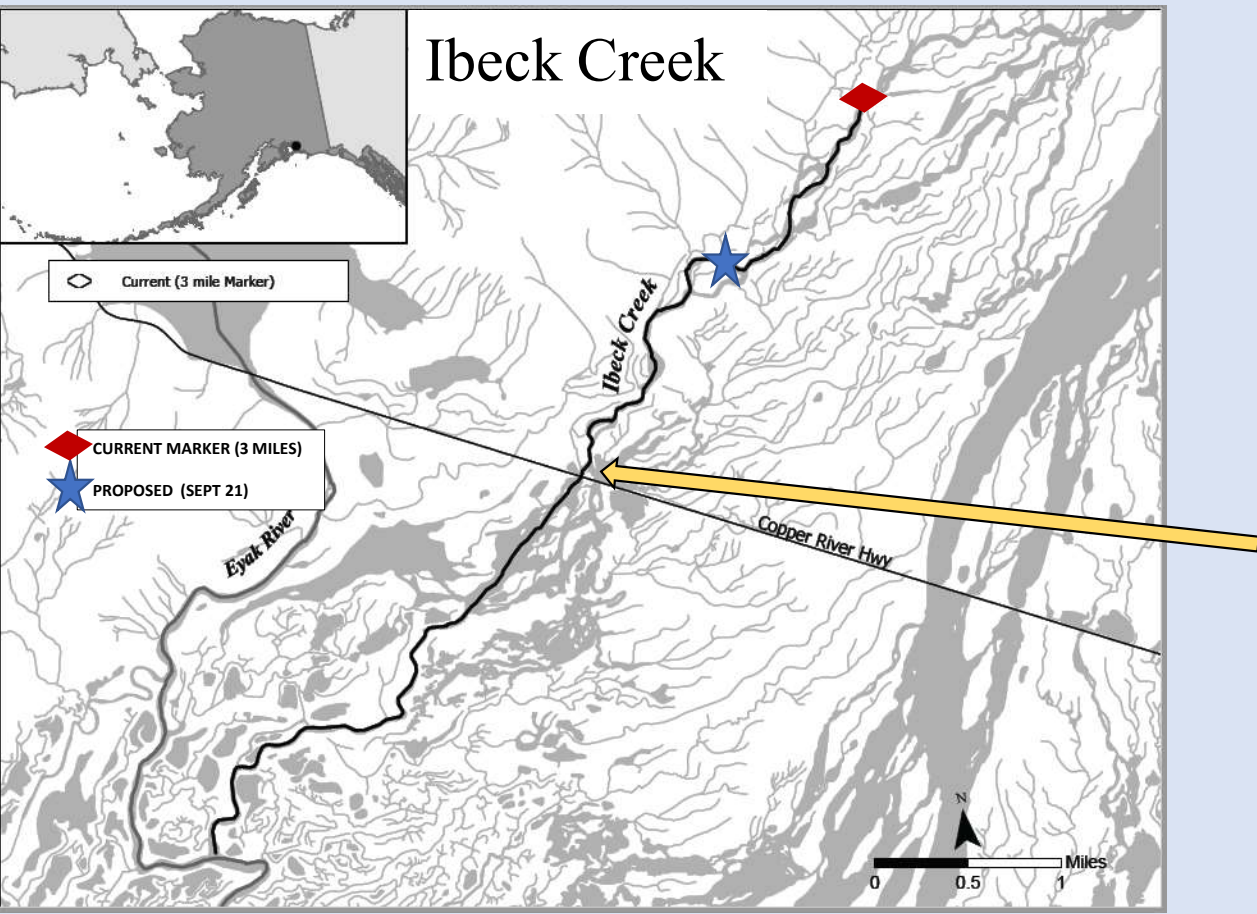
Copper River Highway Sport Fishing Regulations

- 1) Only unbaited, artificial lures allowed from April 15 – June 14.
- 2) Bag/possession limit is 3 coho salmon (any size).
- 3) A person may not remove a coho salmon from the water before releasing it.
- 4) A coho salmon removed from the water must be retained and becomes part of your daily bag/possession limit.
- 5) Once your daily bag limit of coho salmon has been reached, you may not fish with bait for the remainder of the day.
- 6) Eyak River – Special regulation: fly-fishing only from June 1 – September 30.
- 7) Ibeck Creek – closed to sport fishing 3 miles upstream of the Copper R. Hwy bridge.



Copper River Delta – Coho Salmon Sport Harvest





*Proposals 86 & 88



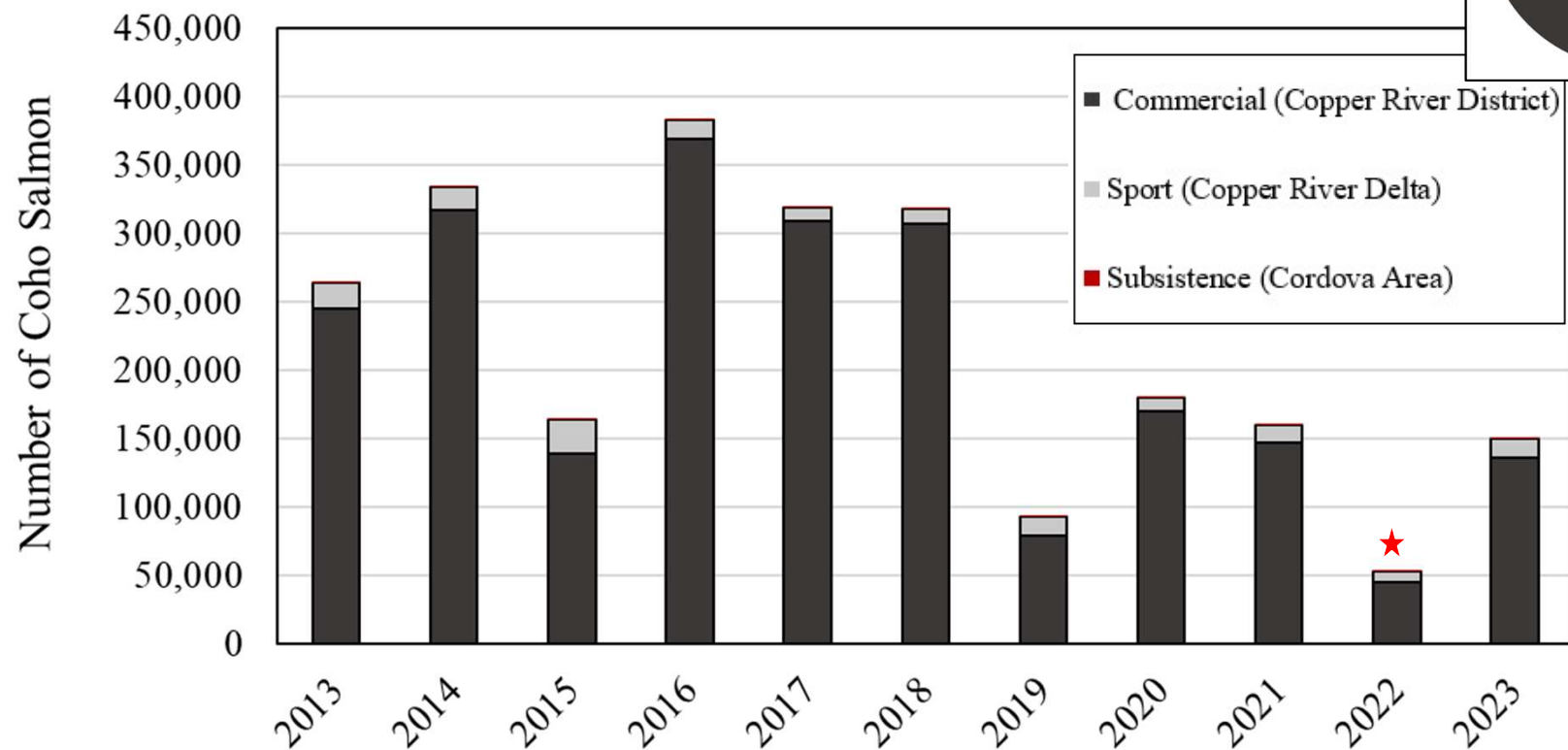
*Proposals 87 & 88



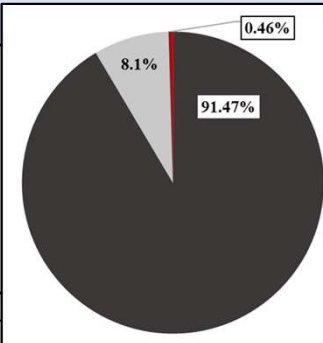
18-Mile Creek confluence with Alaganik Slough



Coho Salmon Harvest (2013 - 2023) Copper River District Commercial and Copper River Delta Sport and Subsistence



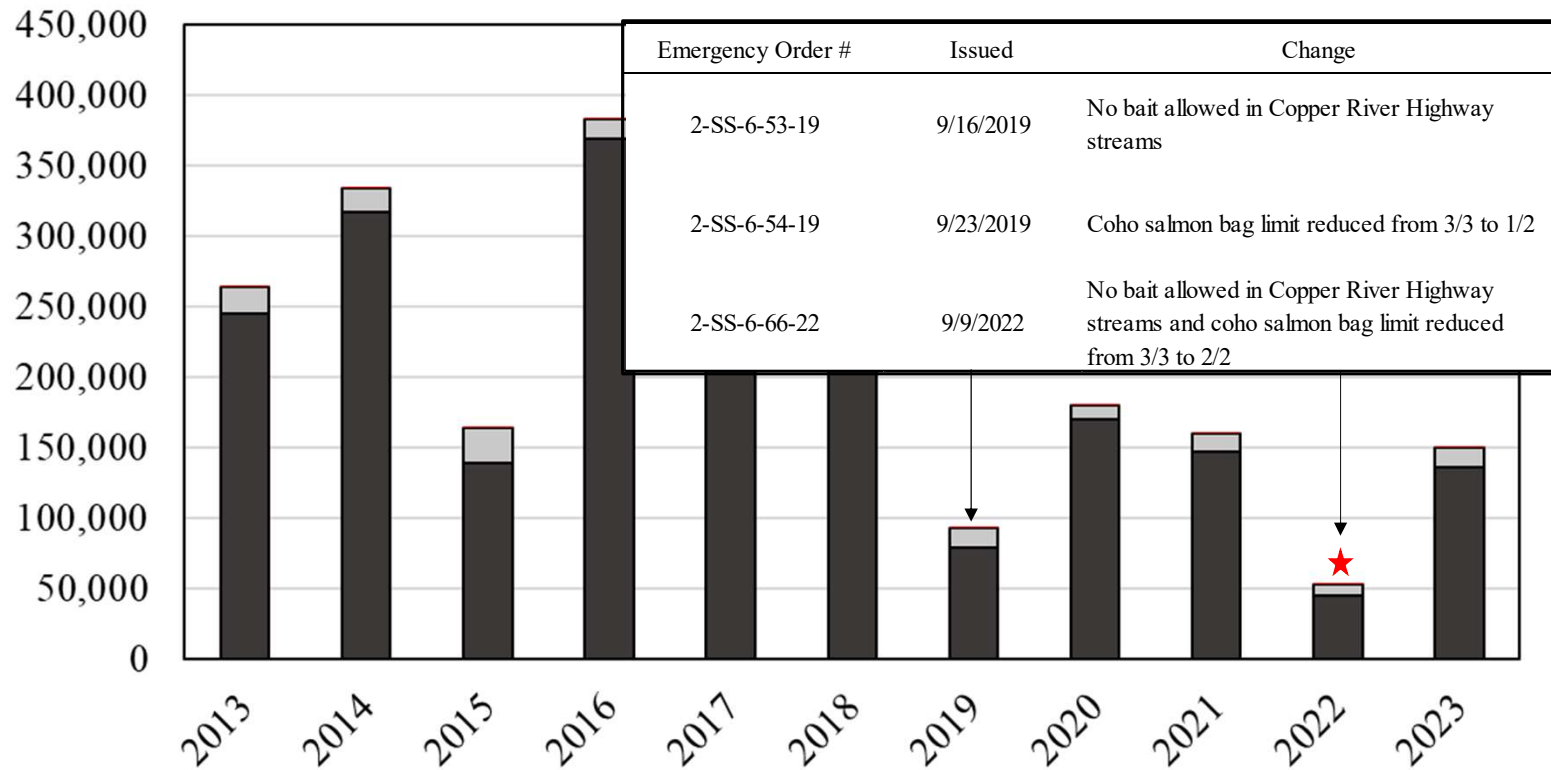
*Proposal 88





Coho Salmon Harvest (2013 - 2023) Copper River District Commercial and Copper River Delta Sport and Subsistence

Number of Coho Salmon



*Proposal 88

Sablefish/Blackcod Sport Harvest

	Guided			Unguided			Total Harvest
	Nonresident	Resident	Total	Nonresident	Resident	Total	
2011	169	110	279	95	367	462	741
2012	516	171	687	220	888	1,108	1,795
2013	411	232	643	179	126	305	948
2014	203	94	297	11	395	406	703
2015	765	314	1,079	196	470	666	1,745
2016	175	322	497	217	116	333	830
2017	534	270	804	123	238	361	1,165
2018	1,010	310	1,320	34	140	174	1,494
2019	513	637	1,150	38	479	517	1,667
2020	131	651	782	90	358	448	1,230
2021	520	315	835	123	118	241	1,076
2022	1,187	280	1,467	21	294	315	1,782
2023	639	184	823	79	33	112	935
Average 2011 -2023	521	299	820	110	309	419	1,239



*Proposal 1

Questions?

- *Sport Fisheries in the Prince William Sound Management Area, 2023 to Inform the Alaska Board of Fisheries in 2024*

