

2022 Nushagak King Salmon Stock of Concern Draft Action Plan



Oral: RC 3, Tab 11


Written: RC 4

Synopsis

- King salmon adopted as SOC at October work session.
- Criteria – Failure to meet inriver goal 5 of 6 years, despite management action.
- Department tasked with developing an action plan.



Draft Action Plan Development



Fishery/Action #	Summary	Specific Action
Option 1	Summary of action	Specifics
Option 2	Summary of action	Specifics
Option 3	Summary of action	Specifics

- Suite of management options for each fishery.
- Increasing severity.
- Conditions for delisting.
- Draft action plan released on November 23rd



Definitions

Stock of Management Concern

“means a concern arising from a chronic inability, despite the use of specific management measures, to maintain escapements for a salmon stock within the bounds of the SEG, BEG, OEG, or other specified management objectives for the fishery.”

Other Specified Management Objectives: Inriver Goals



Definitions

Chronic Inability

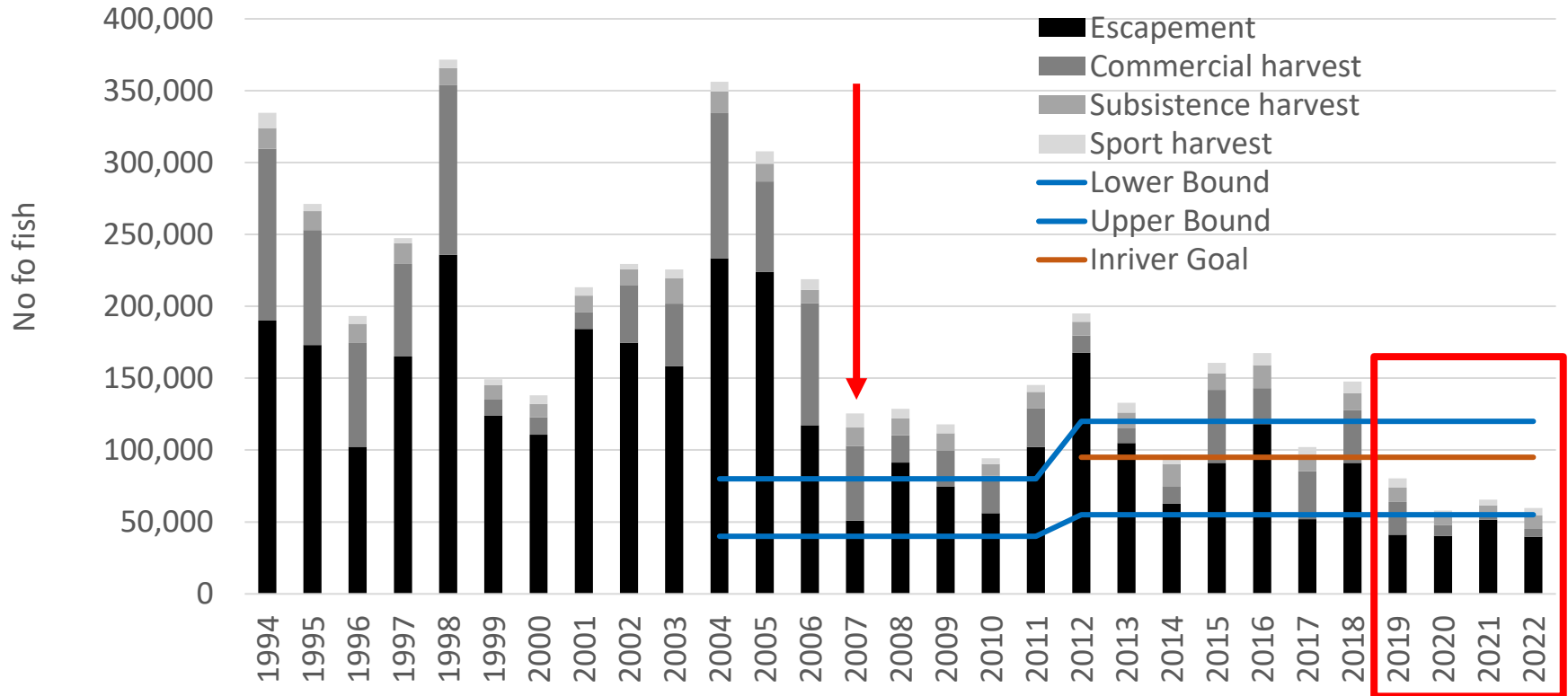
“chronic inability means the continuing or anticipated inability to meet escapement thresholds over a four to five year period, which is approximately the generation time of most salmon species.”



King Salmon Run Size

Figure 3 (Page 29)

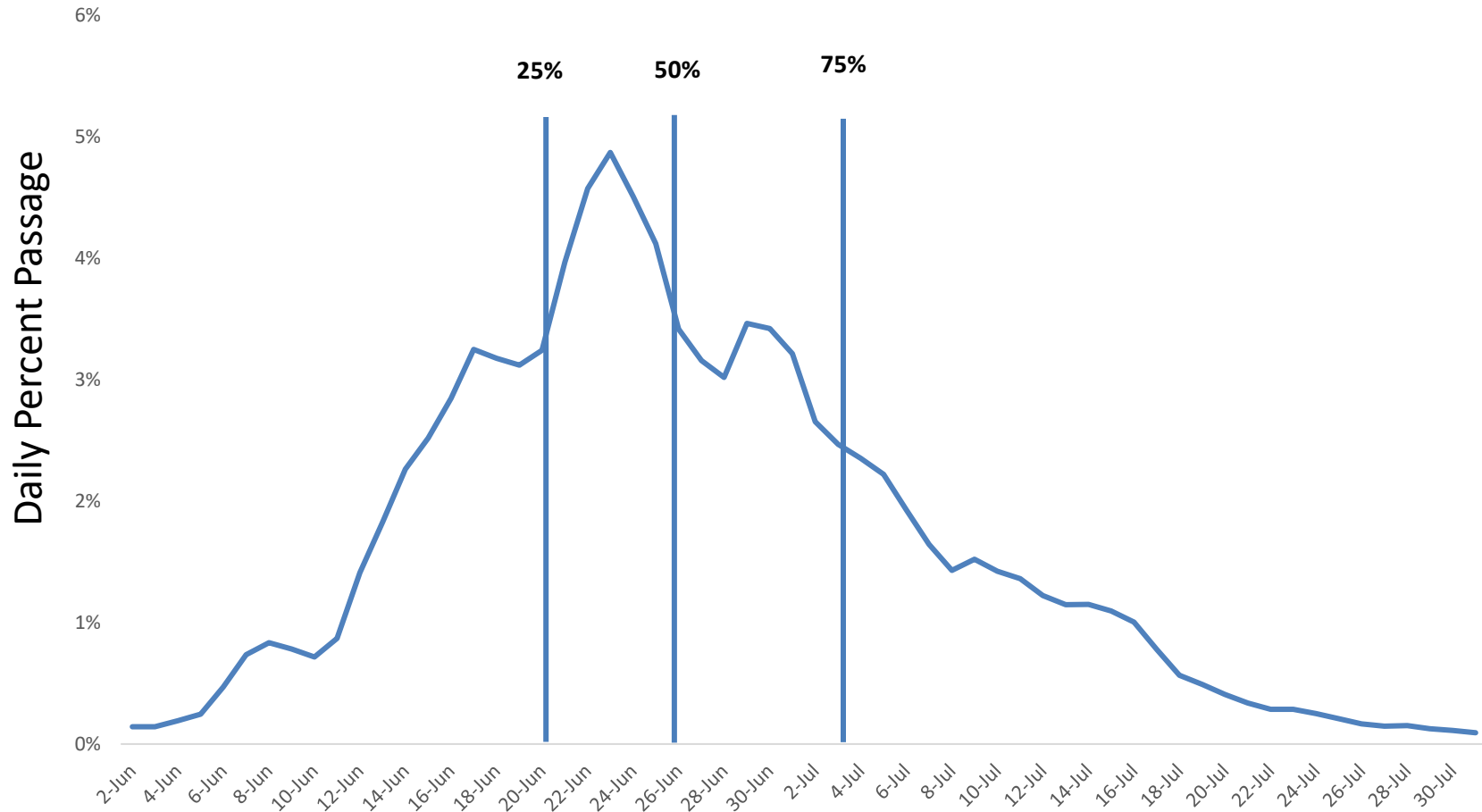
Annual king salmon run components, Nushagak River 1994-2022



- Downturn in productivity – 2007
- Poor assessment - uncertainty if meeting SEG in recent years.

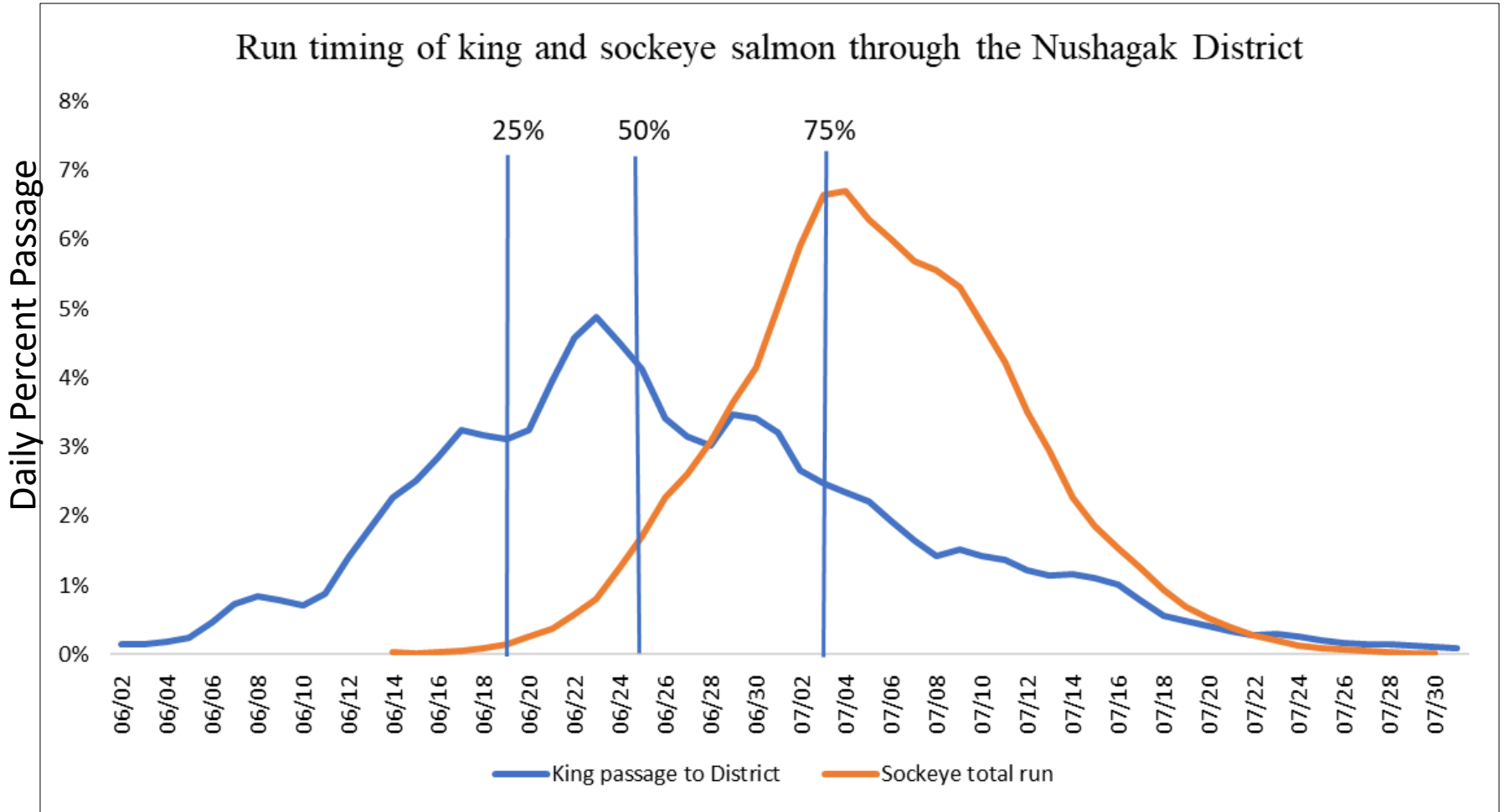


Run Timing Considerations



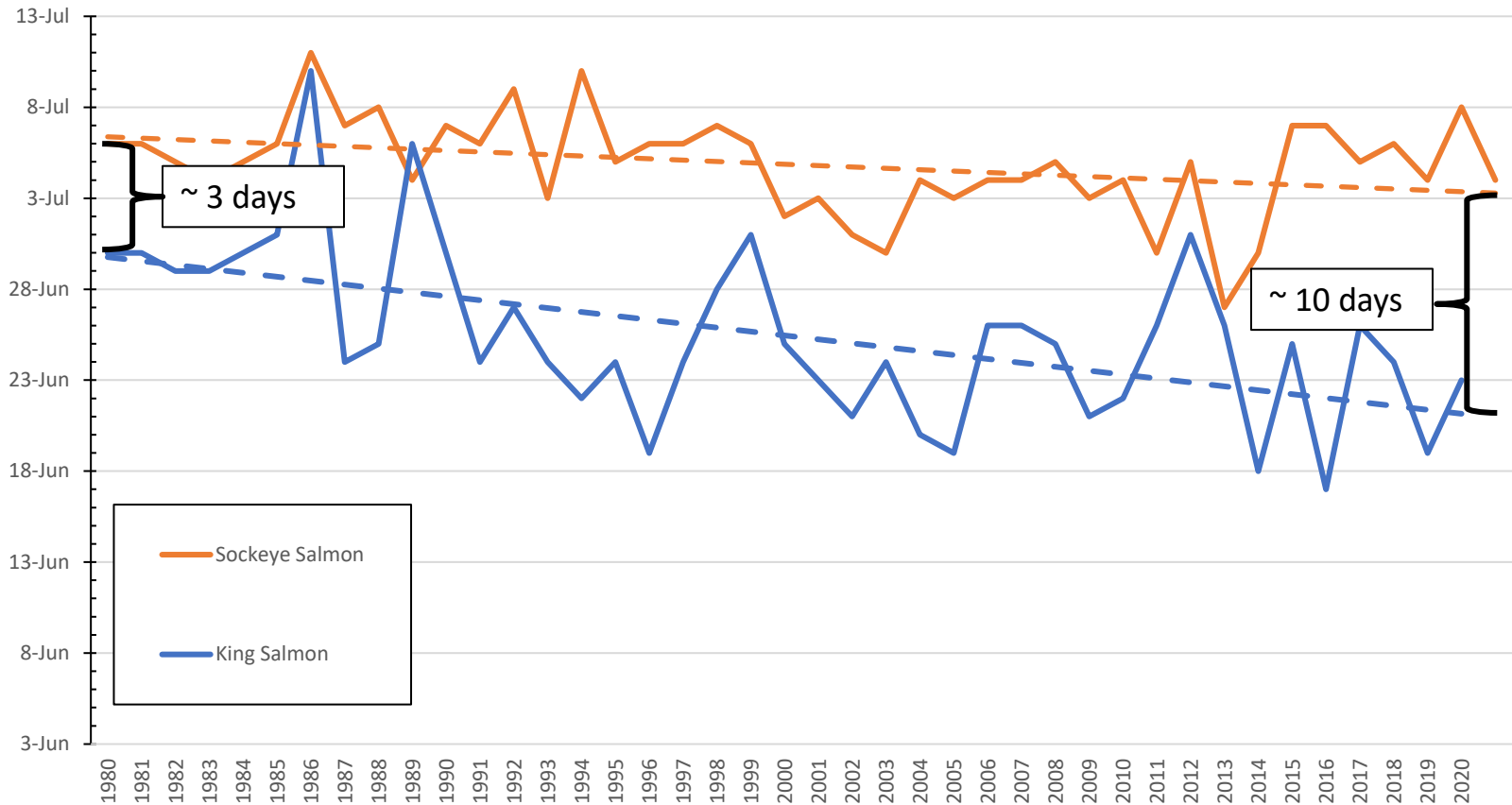
Run Timing Considerations

Figure 2 (Page 28)



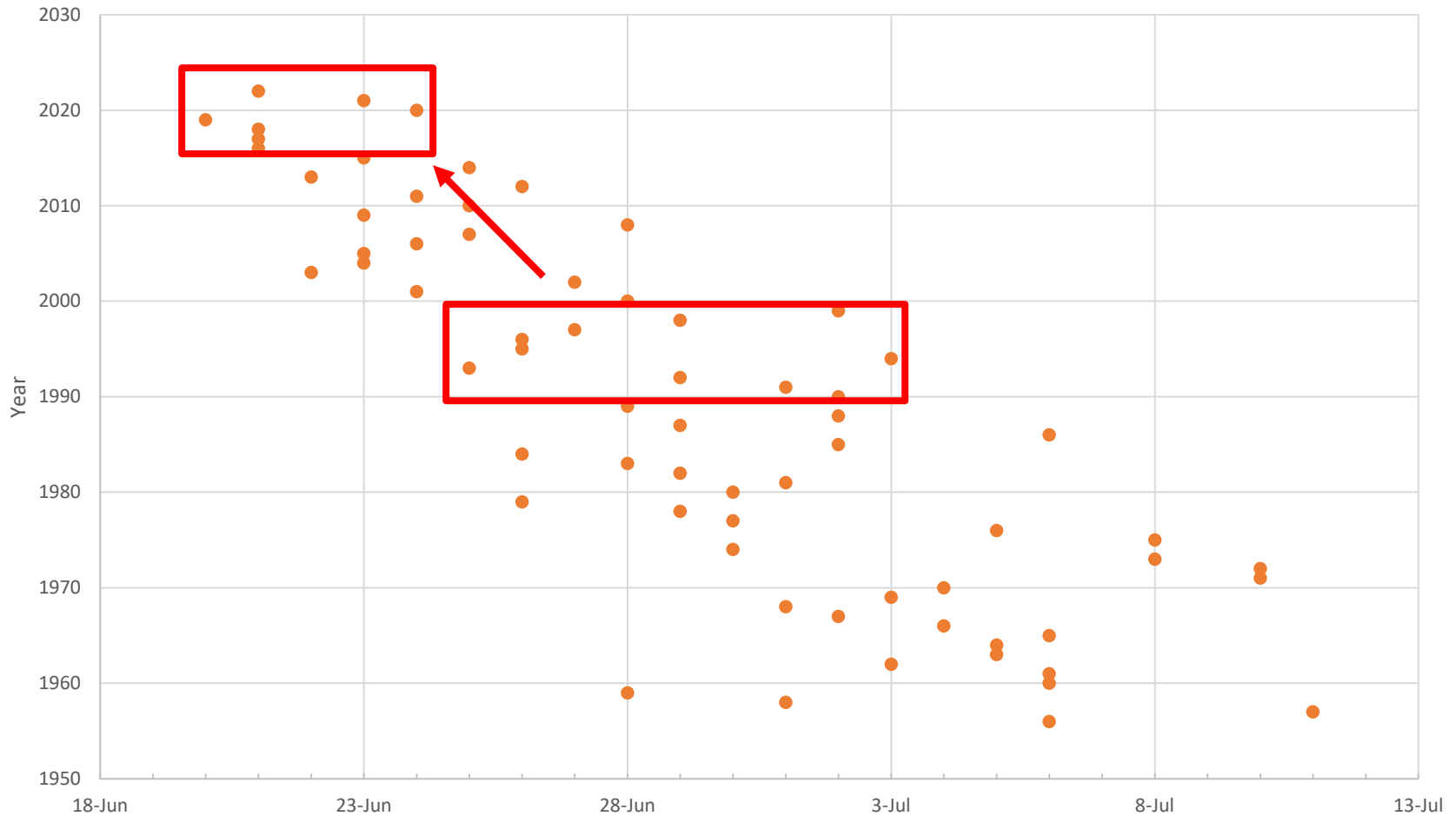
Run Timing Considerations

Sockeye and king salmon midpoints in the District



Run Timing Considerations

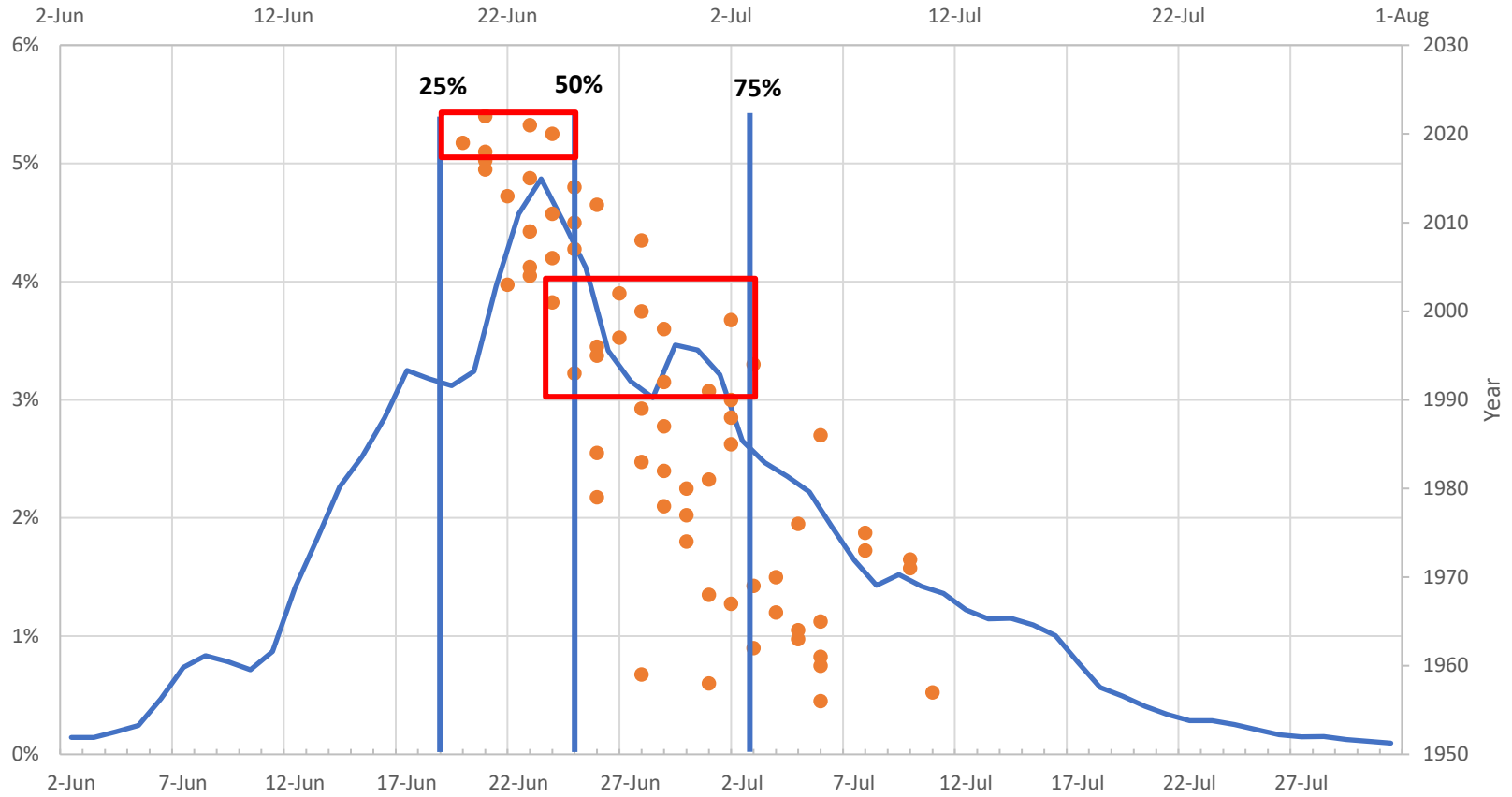
Date 100k sockeye Passed the Wood tower



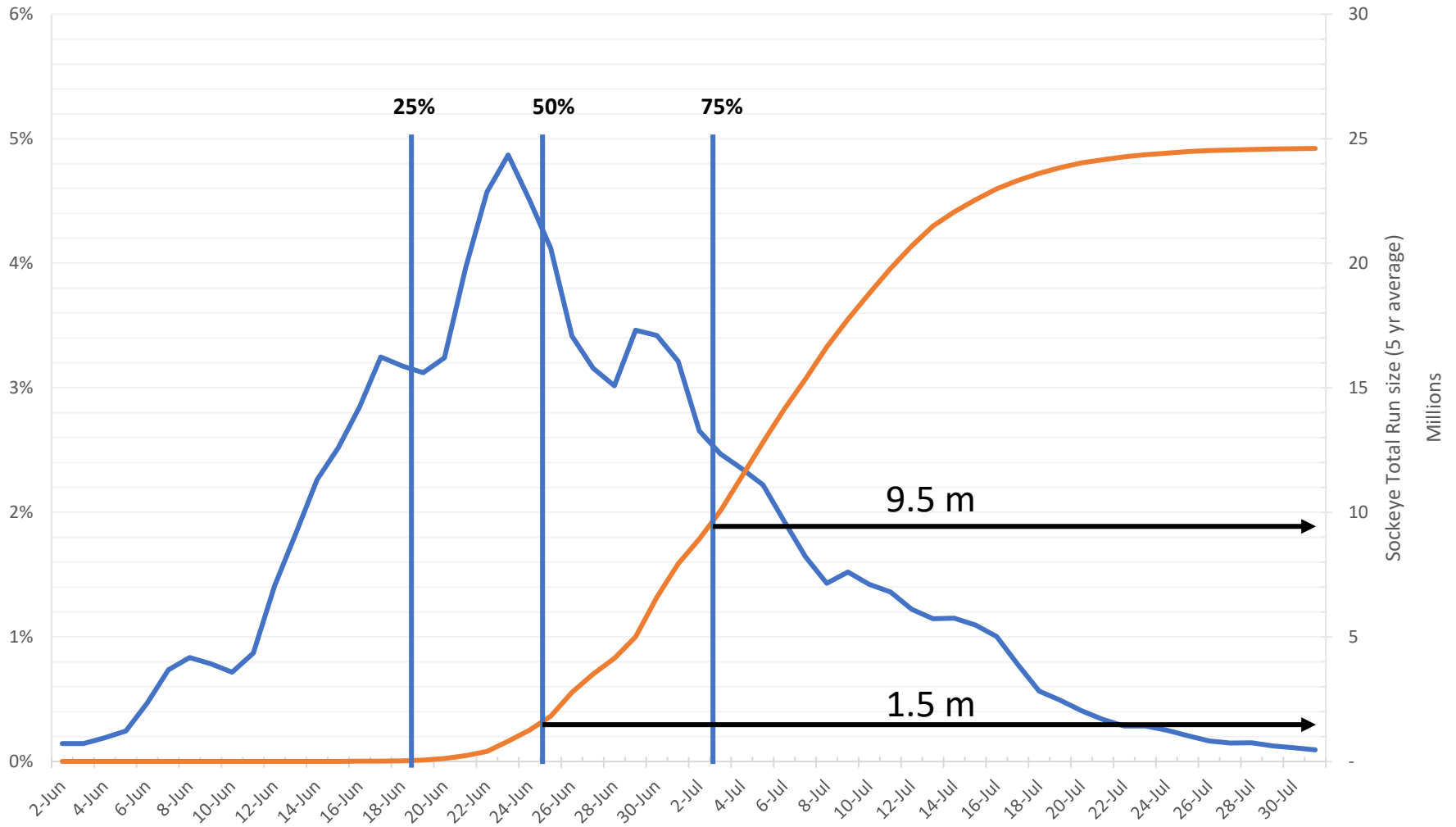
Run Timing Considerations

Figure 4 (Page 30)

Date 100k Wood R. trigger was met by year
with King Run run timing and quartiles



Run Timing Considerations



Commercial Fisheries Options

Action Plan Pages 5 - 10

Summary Table of Commercial Fishery actions (Page 10 of Action Plan)

Fishery/Action #	Summary	Specific Action
CF/#1	Status quo.	Continue managing under current regulations.
CF/#2	Develop new regulations to open the WRSHA in early season.	Board action needed.
CF/#3	Create an OEG for Nushagak River sockeye salmon.	Board action needed.
CF/#4	Reduce mesh size and/or net length.	Board action needed.
CF/#5	Reduce time and area to reduce king salmon commercial harvest potential.	EO authority.
CF/#6	Close commercial fishing.	Board Action needed.



Sport Fisheries Options

Action Plan Pages 11 - 15

Summary Table of Sport Fishery actions (Page 14 of Action Plan)

Fishery/Action #	Summary	Specific Action
SF/#1	Status quo. EO authority.	No Action.
SF/#2	Reduce bag and possession limit.	Board action needed.
SF/#3	Create a nonretention fishery.	Board action needed.
SF/#4	Create new time and area regulations.	Board action needed.
SF/#5	Close the king salmon fishery and prohibit bait.	Board action needed.



Subsistence Fisheries Options

Action Plan Pages 16 - 19

Summary Table of Subsistence Fishery actions (Page 18 of Action Plan)

Fishery/Action #1	Summary	Specific Action
Subsistence #1	Status quo. Maintain current EO management for subsistence harvest.	Continue using EO authority as needed.
Subsistence #2	A harvest limit on Nushagak River king salmon in the subsistence fishery	Limit the number of king salmon that can be harvested per permit holder that would meet management needs while providing some opportunity. Board Action Required.
Subsistence #3	Reduce fishing time by one day increments in the subsistence fishery during king salmon season only.	Reduce fishing days in the Nushagak River drainage including Dillingham beaches and Wood River to Red Bluff and Nushagak Section of the commercial fishing district if conservation concerns warrant reduction of harvest. Board action needed.
Subsistence #4	Reduce area open in the subsistence fishery.	Inseason, certain areas as determined by the area manager may be closed to subsistence. Board action needed.



Research and Plan

- Current assessment program has high level of uncertainty.
- Suite of additional projects.
- Assessment improvement takes time.
- Seeking regulatory help in the meantime.



Conditions for Delisting

Action Plan Pages 20 - 21

- 1. Delisting** - If the lower bound of the SEG is met or exceeded in three consecutive years and is expected to meet the goal range in the future years or is met in four out of six consecutive years and is expected to meet the goal range in future years, the department will recommend removing Nushagak River king salmon as a stock of management concern at the first Bristol Bay board meeting after this condition is met.
- 2. Restrictions** - Management restrictions may be relaxed based on king salmon run timing and if catch and harvest data indicate restrictions are no longer needed to ensure the escapement goal is met.
- 3. Restrictions** - If two consecutive years of escapement are near or above the upper bound of the escapement goal range, management restrictions may be relaxed or set aside using EO authority.



Questions

