

ADF&G STAFF ORAL PRESENTATION ALASKA BOARD OF FISHERIES

SOUTHEAST ALASKA/YAKUTAT
SHELLFISH REGULATORY PROPOSALS
January 2021 Ketchikan, Alaska



Red, Blue and Golden King, Tanner, and Dungeness Crab Commercial Fisheries

Andrew P. Olson, Groundfish-Shellfish Program Coordinator
Division of Commercial Fisheries
Alaska Department of Fish and Game, Southeast Region

Southeast Commercial Crab Fisheries—Overview

- Male-only
- Minimum legal size (carapace width) set to allow reproductive activity prior to entering fishery



- Seasons established to avoid sensitive life history events (molting/mating)

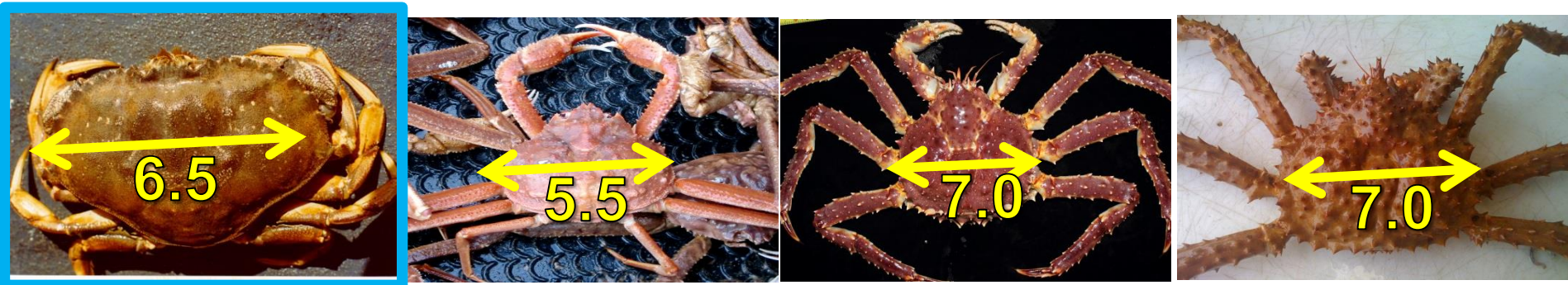
Southeast Alaska Commercial Crab Fishing Seasons

	Jan	Feb	Mar	Apr	May	Jun	Jul	Aug	Sep	Oct	Nov	Dec
Dungeness	Dark Blue	Dark Blue				Light Blue	Light Blue	Light Blue		Diagonal Hatching	Diagonal Hatching	Dark Blue
Tanner		Yellow	Yellow	Yellow								
Red king	Red	Red									Red	Red
Golden king*		Light Green	Light Green	Light Green	Light Green	Light Green	Light Green	Light Green	Light Green	Light Green	Light Green	

* Closes by Emergency Order

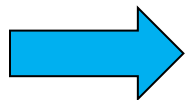
Southeast Commercial Crab Fisheries—Overview

- Male-only
- Minimum legal size (carapace width) set to allow reproductive activity prior to entering fishery



- Seasons established to avoid sensitive life history events (molting/mating)

Southeast Alaska Commercial Crab Fishing Seasons



	Jan	Feb	Mar	Apr	May	Jun	Jul	Aug	Sep	Oct	Nov	Dec
Dungeness	Dark Blue	Dark Blue				Light Blue	Light Blue	Light Blue		Diagonal Hatching	Diagonal Hatching	Dark Blue
Tanner		Yellow	Yellow	Yellow								
Red king	Red	Red									Red	Red
Golden king*		Light Green	Light Green	Light Green	Light Green	Light Green	Light Green	Light Green	Light Green	Light Green	Light Green	

* Closes by Emergency Order

Southeast Commercial Crab Fisheries—Overview

- Male-only
- Minimum legal size (carapace width) set to allow reproductive activity prior to entering fishery



- Seasons established to avoid sensitive life history events (molting/mating)

Southeast Alaska Commercial Crab Fishing Seasons

	Jan	Feb	Mar	Apr	May	Jun	Jul	Aug	Sep	Oct	Nov	Dec
Dungeness	Dark Blue	Dark Blue				Light Blue	Light Blue	Light Blue		Diagonal Hatching	Diagonal Hatching	Dark Blue
Tanner		Yellow	Yellow	Yellow								
Red king	Red	Red									Red	Red
Golden king*		Light Green	Light Green	Light Green	Light Green	Light Green	Light Green	Light Green	Light Green	Light Green	Light Green	

* Closes by Emergency Order



Southeast Commercial Crab Fisheries–Overview

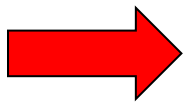
- Male-only
- Minimum legal size (carapace width) set to allow reproductive activity prior to entering fishery



- Seasons established to avoid sensitive life history events (molting/mating)

Southeast Alaska Commercial Crab Fishing Seasons

	Jan	Feb	Mar	Apr	May	Jun	Jul	Aug	Sep	Oct	Nov	Dec
Dungeness	Blue	Blue					Light Blue	Light Blue		Hatched	Hatched	Blue
Tanner		Yellow	Yellow	Yellow								
Red king	Red										Red	Red
Golden king*		Light Green	Light Green	Light Green	Light Green	Light Green	Light Green	Light Green	Light Green	Light Green	Light Green	



* Closes by Emergency Order



Southeast Commercial Crab Fisheries—Overview

- Male-only
- Minimum legal size (carapace width) set to allow reproductive activity prior to entering fishery



- Seasons established to avoid sensitive life history events (molting/mating)

Southeast Alaska Commercial Crab Fishing Seasons

	Jan	Feb	Mar	Apr	May	Jun	Jul	Aug	Sep	Oct	Nov	Dec
Dungeness	■	■	■				■	■	■	■	■	■
Tanner		■	■	■	■							
Red king	■	■									■	■
Golden king*		■	■	■	■	■	■	■	■	■	■	■

* Closes by Emergency Order



Southeast Commercial Crab Fisheries—Overview

- **King & Tanner**

- Limited entry



Permit	Number of Permits	Species		
		Tanner	Red/Blue king	Golden king
T19A	26	26		
K19A	9		9	
K29A	5		5	5
K39A	8			8
K49A	15	15	15	
K59A	4	4		4
K69A	30	30	30	30
Maximum permits		75	59	47

Southeast Commercial Crab Fisheries–Overview

● King & Tanner

- Limited entry



Permit	Number of Permits	Species		
		Tanner	Red/Blue king	Golden king
T19A	26	26		
K19A	9		9	
K29A	5		5	5
K39A	8			8
K49A	15	15	15	
K59A	4	4		4
K69A	30	30	30	30
Maximum permits		75	59	47

● Dungeness

- Vessels with more than one permit holder are limited to 300 pots
- Limited entry



Permit	Gear type/limit	Number of permits
D9AA	100% max pots (300)	49
D9BA	75% max pots (225)	43
D9CA	50% max pots (150)	83
D9DA	25% max pots (75)	94
D10A	Ring net	2
D11A	Dive	2
Maximum permits		273



RKC Assessment & Management

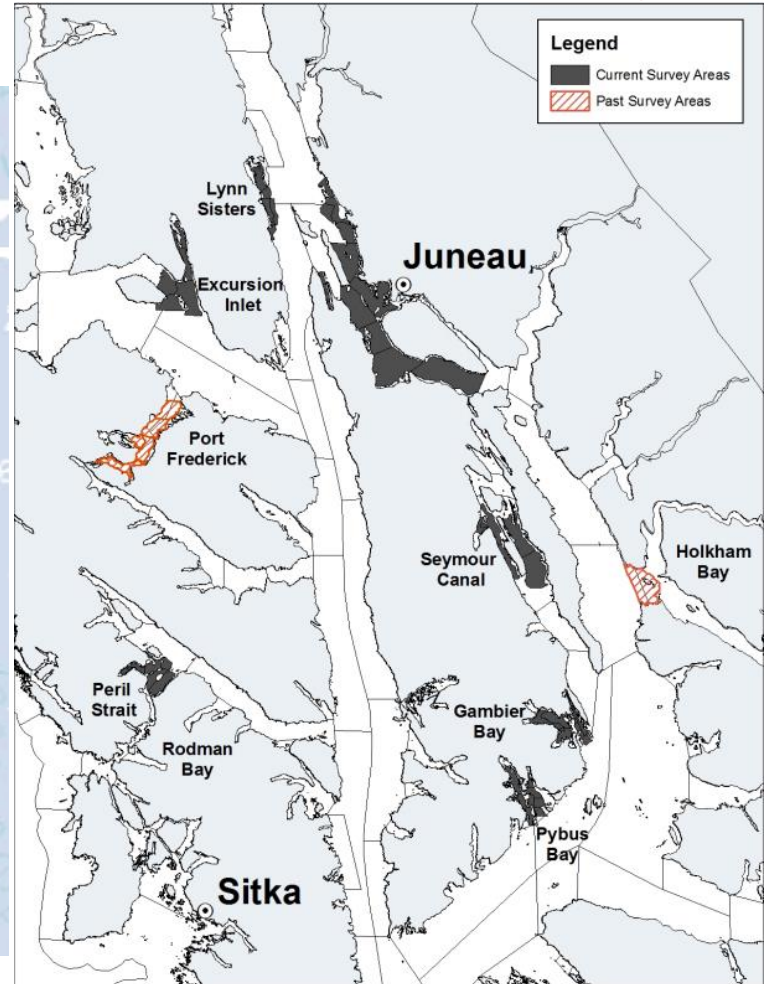
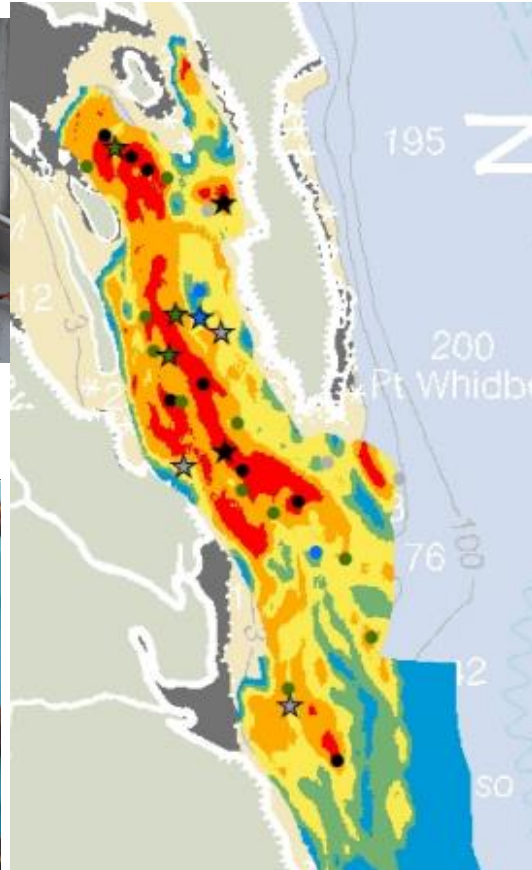


● Assessment:

- Density stratified pot survey used to estimate index of abundance
- 7 areas surveyed annually
- Collect CPUE and biological information



Carapace Length - King Crab



RKC Assessment & Management

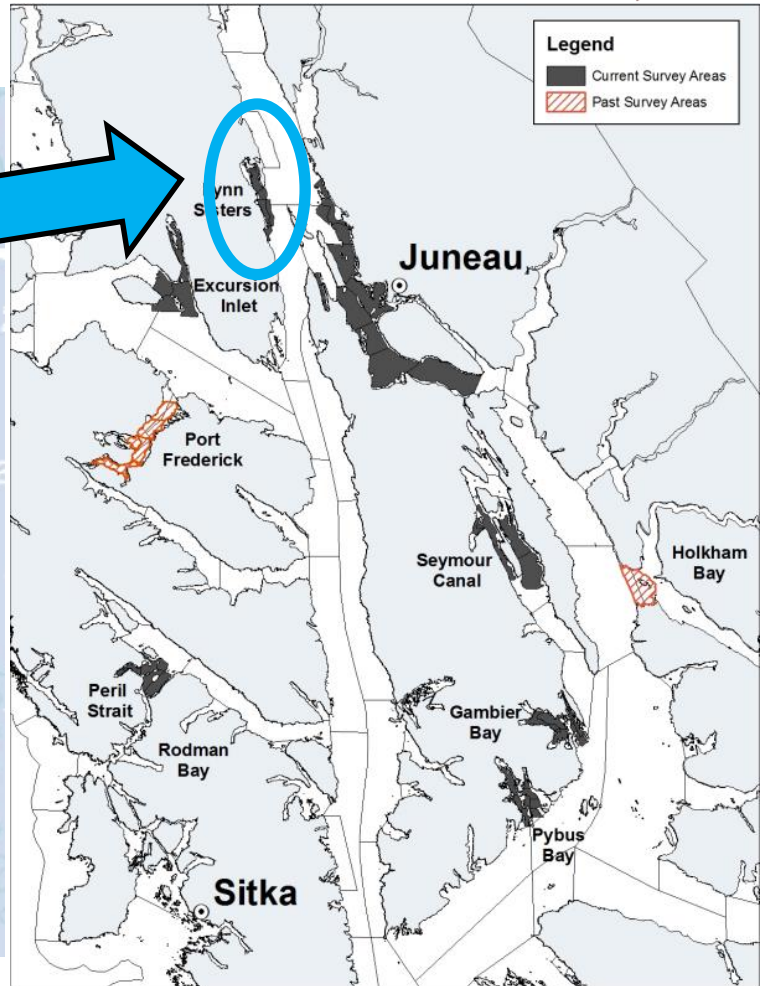
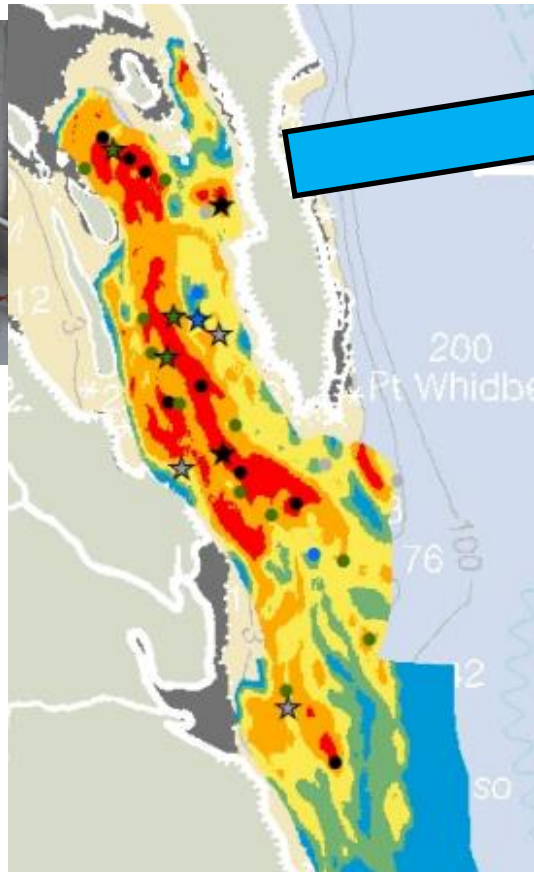


● Assessment:

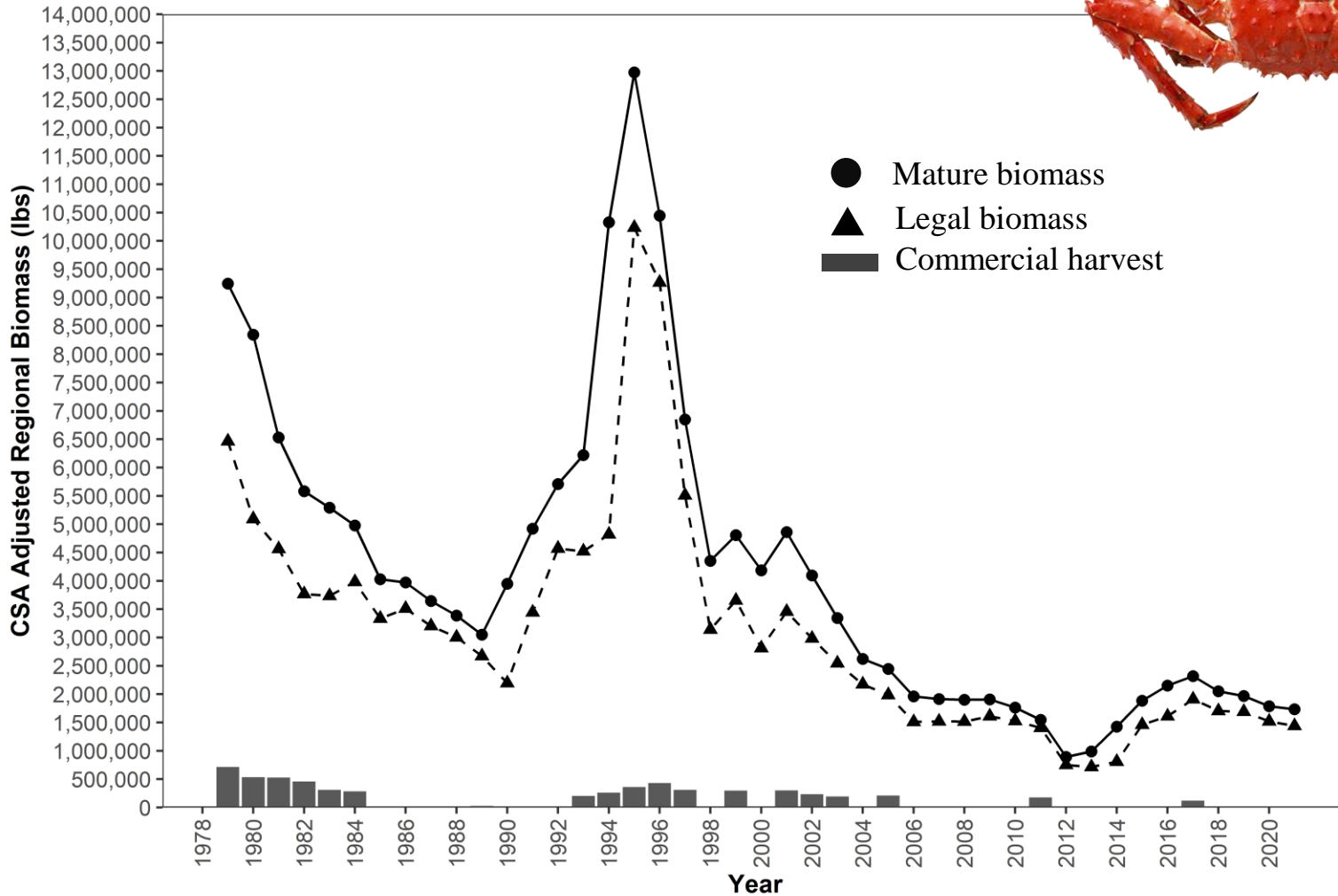
- Density stratified pot survey used to estimate index of abundance
- 7 areas surveyed annually
- Collect CPUE and biological information



Carapace Length - King Crab



RKC Assessment & Management



Regionwide estimates of legal and mature biomass of RKC and commercial harvest in Southeast Alaska, 1979–2021



RKC Assessment & Management



- **Management Overview:**

- Limited entry (59 permits)
- Males only, 7-inch minimum CW, season November 1–January 24
- Pot limits based on GHL (20, 30, 40, or 50 pots)
- Logbooks and call-ins required
- Allocation plan for commercial and personal use in Section 11-A/Juneau Area (5 AAC 34.111)
- Personal use permit required for 11-A (RKC/BKC only) and regionwide (all king crab)

RKC Assessment & Management



- **Management Overview:**

- Limited entry (59 permits)
- Males only, 7-inch minimum CW, season November 1–January 24
- Pot limits based on GHL (20, 30, 40, or 50 pots)
- Logbooks and call-ins required
- Allocation plan for commercial and personal use in Section 11-A/Juneau Area (5 AAC 34.111)
- Personal use permit required for 11-A (RKC/BKC only) and regionwide (all king crab)

- **Management Plan: 5 AAC 34.113**

- *“Policy on King and Tanner Crab Resource Management”*
- Minimum Guideline Harvest Level (GHL) threshold of 200,000 lbs
- Harvest rate determined for legal males based on stock health
- GHLs set by area using survey estimates of biomass and proportion of historic harvest in non-surveyed areas

RKC Assessment & Management



- **Management Overview:**

- Limited entry (59 permits)
- Males only, 7-inch minimum CW, season November 1–January 24
- Pot limits based on GHL (20, 30, 40, or 50 pots)
- Logbooks and call-ins required
- Allocation plan for commercial and personal use in Section 11-A/Juneau Area (5 AAC 34.111)
- Personal use permit required for 11-A (RKC/BKC only) and regionwide (all king crab)

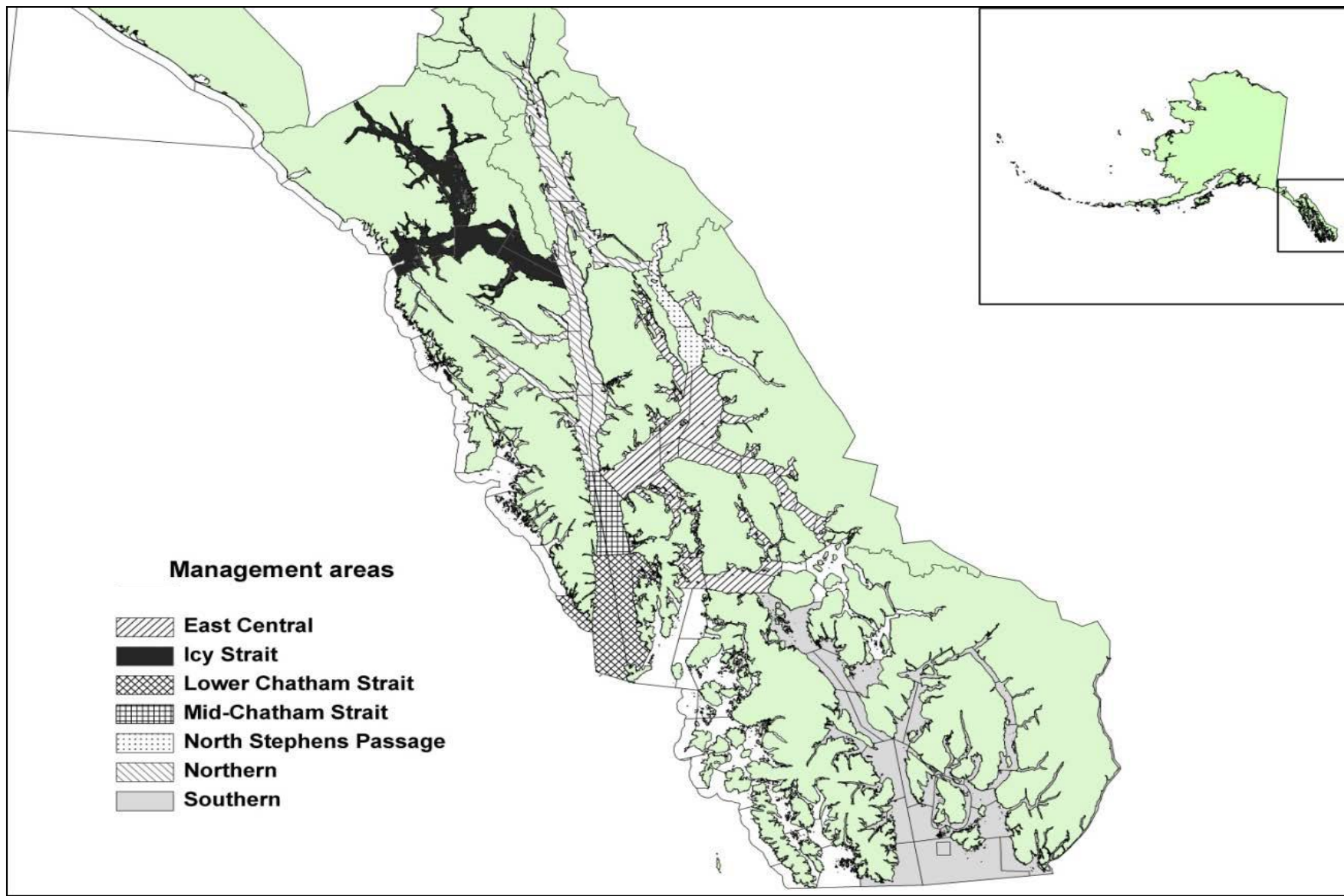
- **Management Plan: 5 AAC 34.113**

- *“Policy on King and Tanner Crab Resource Management”*
- Minimum Guideline Harvest Level (GHL) threshold of 200,000 lbs
- Harvest rate determined for legal males based on stock health
- GHLs set by area using survey estimates of biomass and proportion of historic harvest in non-surveyed areas

Proposals 190 and 191: seek to modify the management plan harvest control rules that include fishery dependent, equal quota share, and trip limit options.

Proposal 194: removes Glacier Bay from blue king crab fishing area due to federal regulation prohibiting king crab fishing.

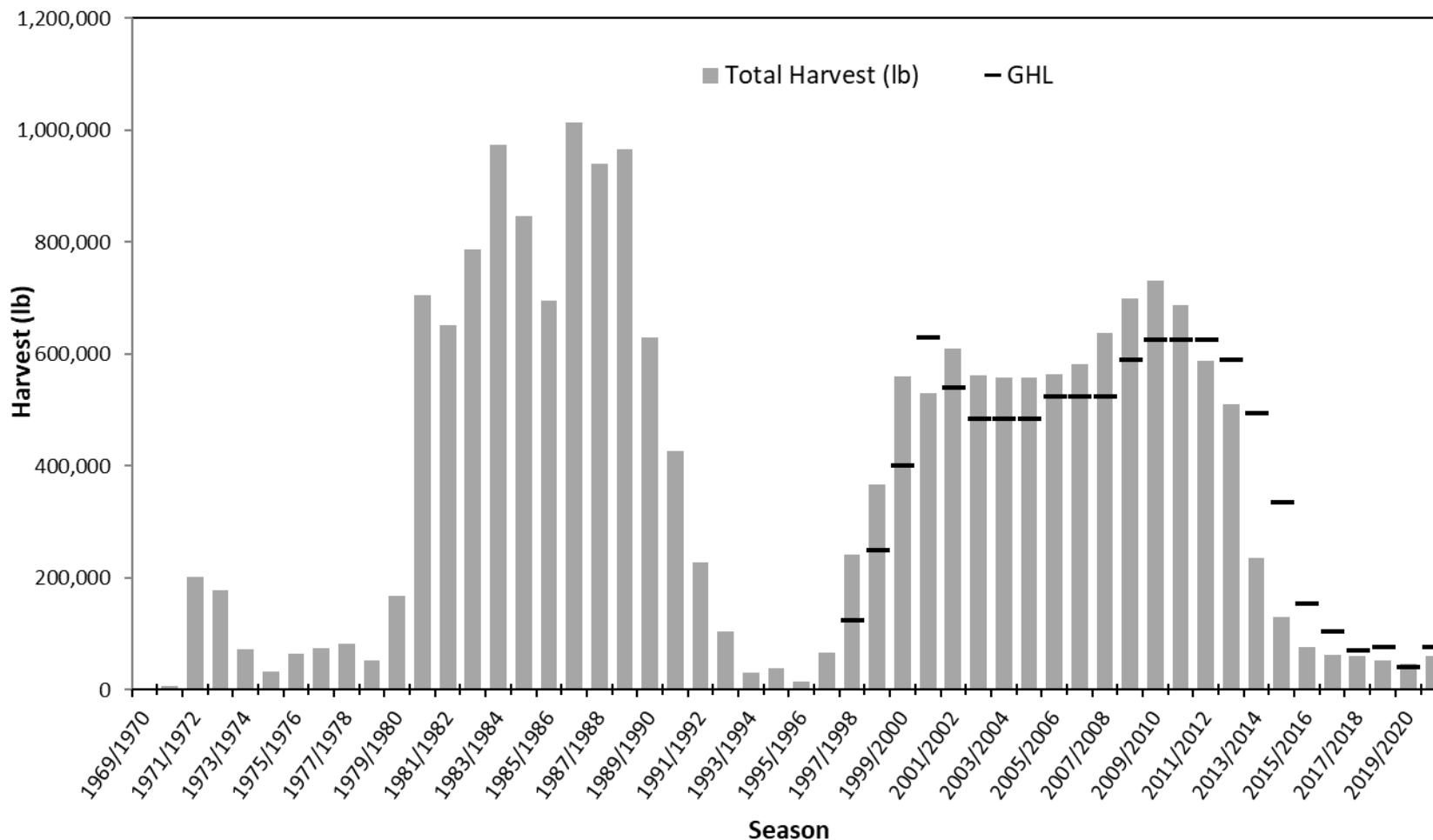
GKC Assessment & Management



GKC Assessment & Management



GKC Harvest and GHGs by Season



GKC Assessment & Management

- **Assessment:**
 - No fishery-independent assessment



GKC Assessment & Management

- **Assessment:**
 - No fishery-independent assessment
- **Management Overview:**
 - Limited entry (51 permits)
 - 7 management areas
 - Males only, 7-inch minimum CW, season mid-February–December 1
 - Pots limited to 100 pots per vessel
 - Logbooks and call-ins required



GKC Assessment & Management



- **Assessment:**
 - No fishery-independent assessment
- **Management Overview:**
 - Limited entry (51 permits)
 - 7 management areas
 - Males only, 7-inch minimum CW, season mid-February–December 1
 - Pots limited to 100 pots per vessel
 - Logbooks and call-ins required
- **Management Plan: 5 AAC 34.114**
 - *“Policy on King and Tanner Crab Resource Management”*
 - Area respective GHs within a Guideline Harvest Range (GHR)
 - GHs set using catch per unit of effort (CPUE), harvest, and biological information collected dockside.
 - Department recommended harvest strategy (2020–present) that utilizes fishery dependent information to evaluate stock health and measure fishery performance using transparent and repeatable metrics to guide management decisions.

GKC Assessment & Management



- **Assessment:**
 - No fishery-independent assessment
- **Management Overview:**
 - Limited entry (51 permits)
 - 7 management areas
 - Males only, 7-inch minimum CW, season mid-February–December 1
 - Pots limited to 100 pots per vessel
 - Logbooks and call-ins required
- **Management Plan: 5 AAC 34.114**
 - *“Policy on King and Tanner Crab Resource Management”*
 - Area respective GHs within a Guideline Harvest Range (GHR)
 - GHs set using catch per unit of effort (CPUE), harvest, and biological information collected dockside.
 - Department recommended harvest strategy (2020–present) that utilizes fishery dependent information to evaluate stock health and measure fishery performance using transparent and repeatable metrics to guide management decisions.

Proposal 192: seeks to clarify and outline expectations for the GKC management plan and permit holders.

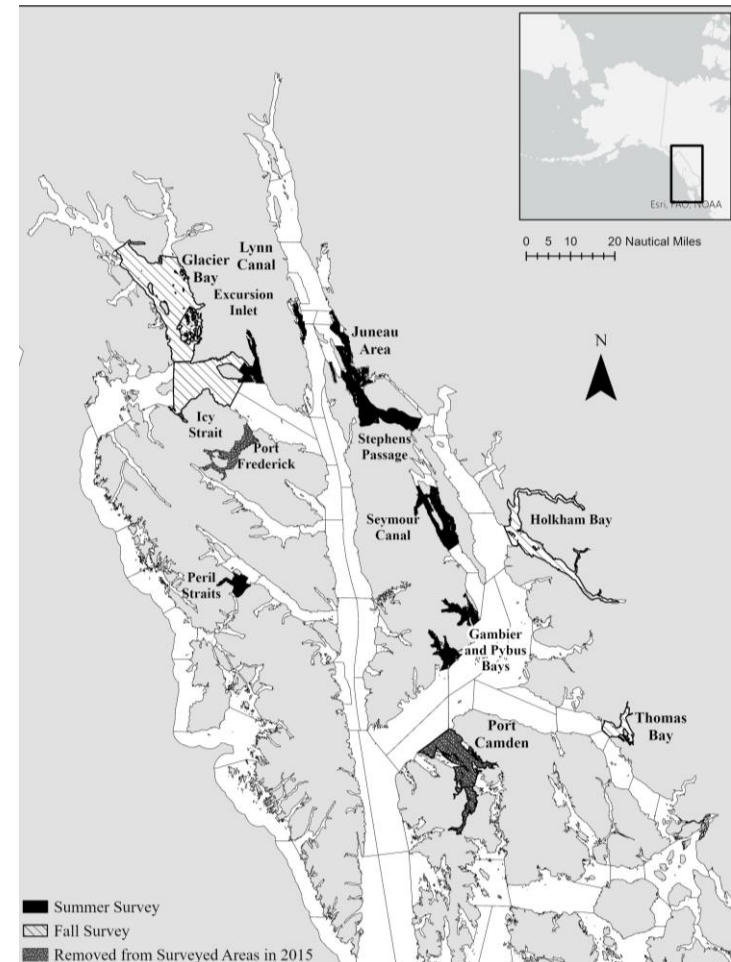
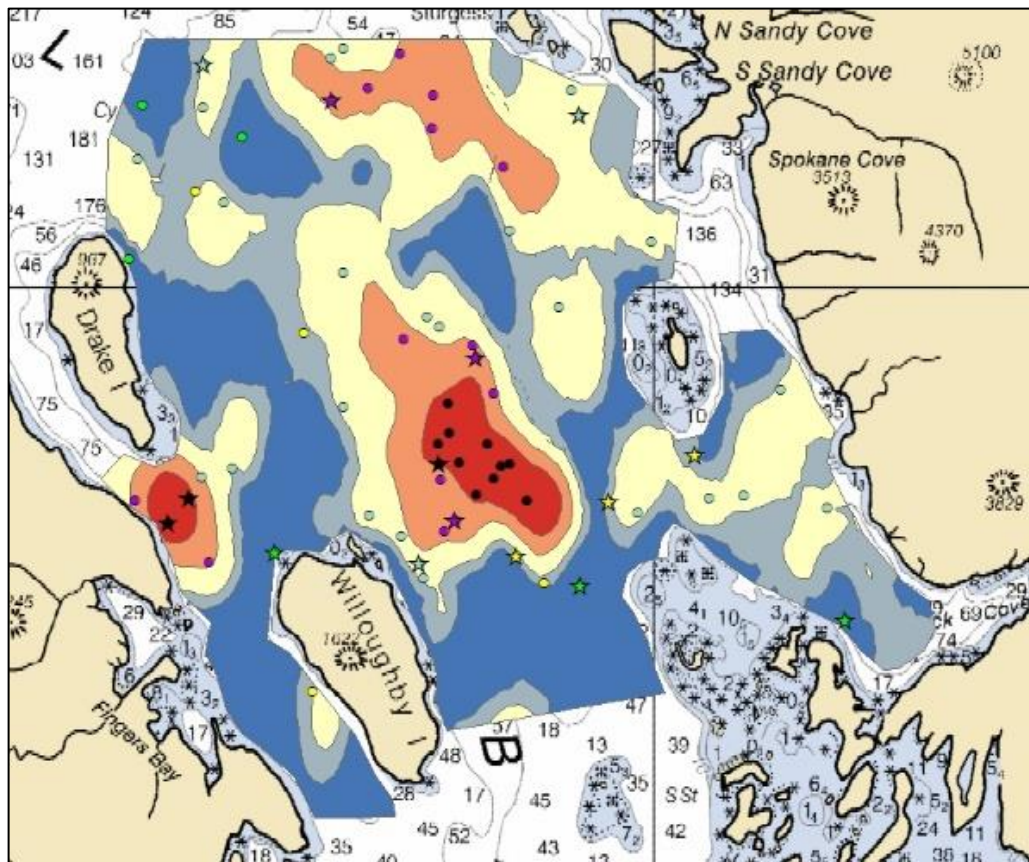
Proposal 193: extends the Southern management area boundary.

Proposal 196: reduces the commercial pot limit for GKC from 100 to 80 pots per vessel.

Tanner Crab Assessment & Management

● Assessment:

- Density stratified pot survey used to estimate index of abundance
- 11 areas surveyed annually
- Collect CPUE and biological information

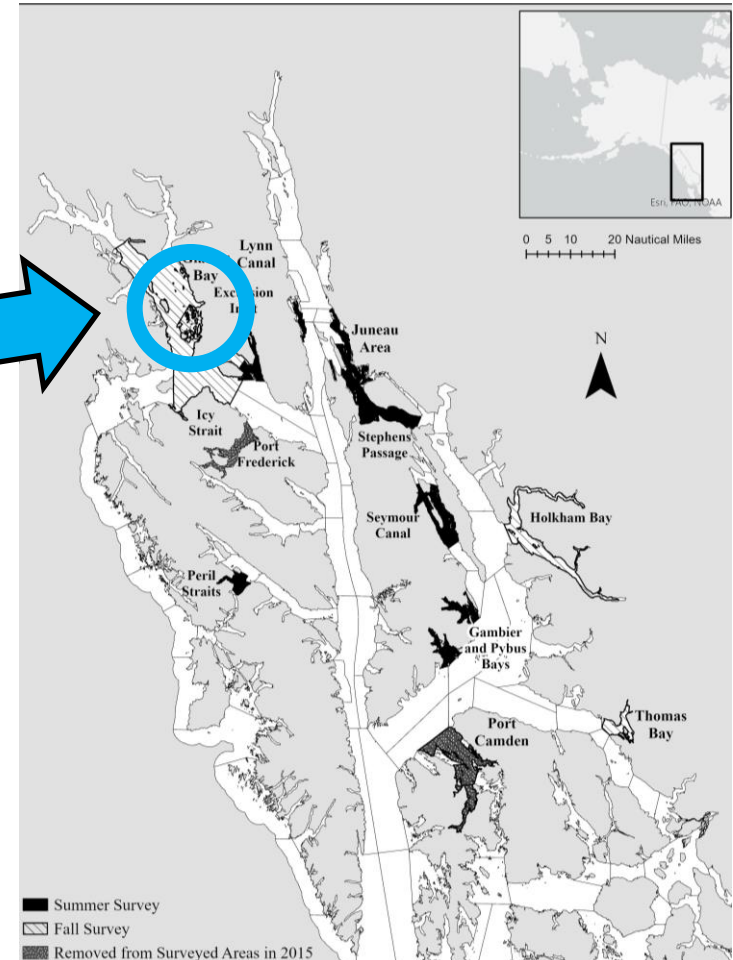
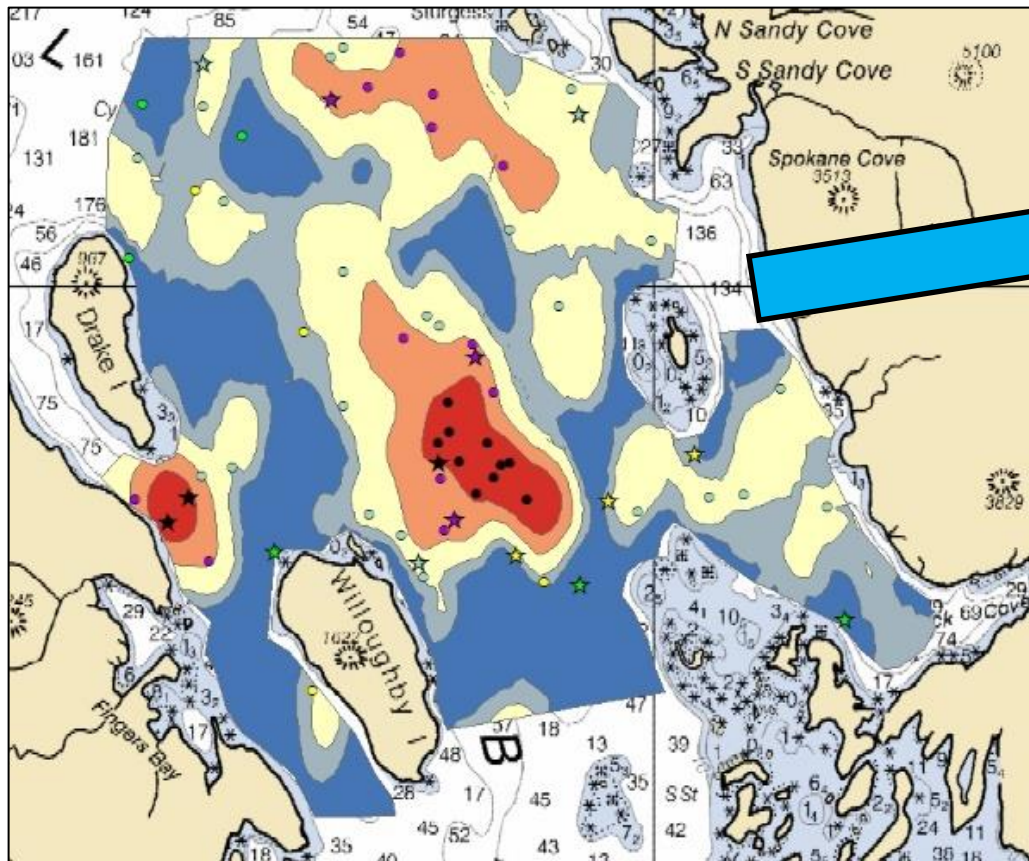


Tanner Crab Assessment & Management



● Assessment:

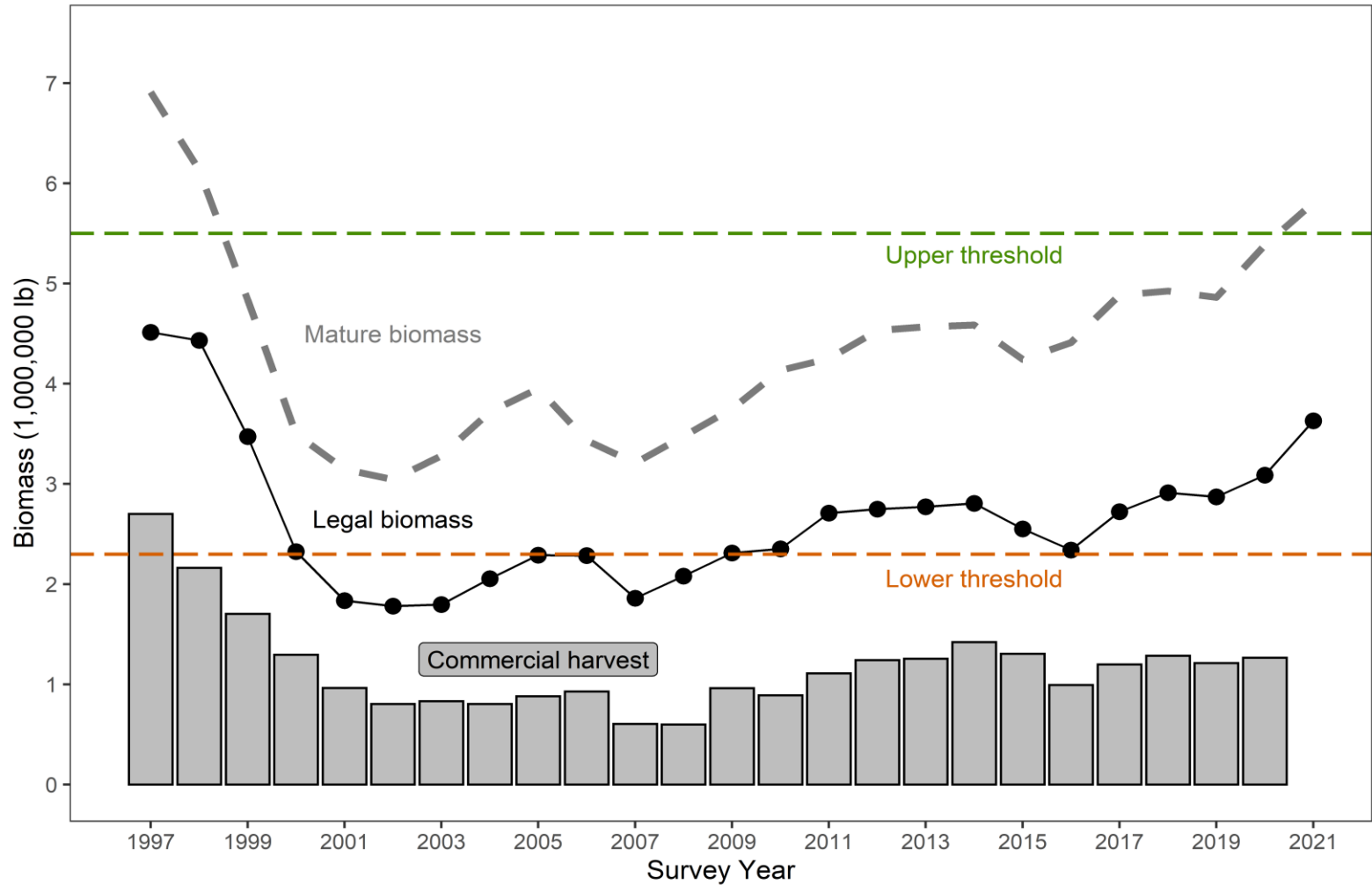
- Density stratified pot survey used to estimate index of abundance
- 11 areas surveyed annually
- Collect CPUE and biological information



Tanner Crab Assessment & Management



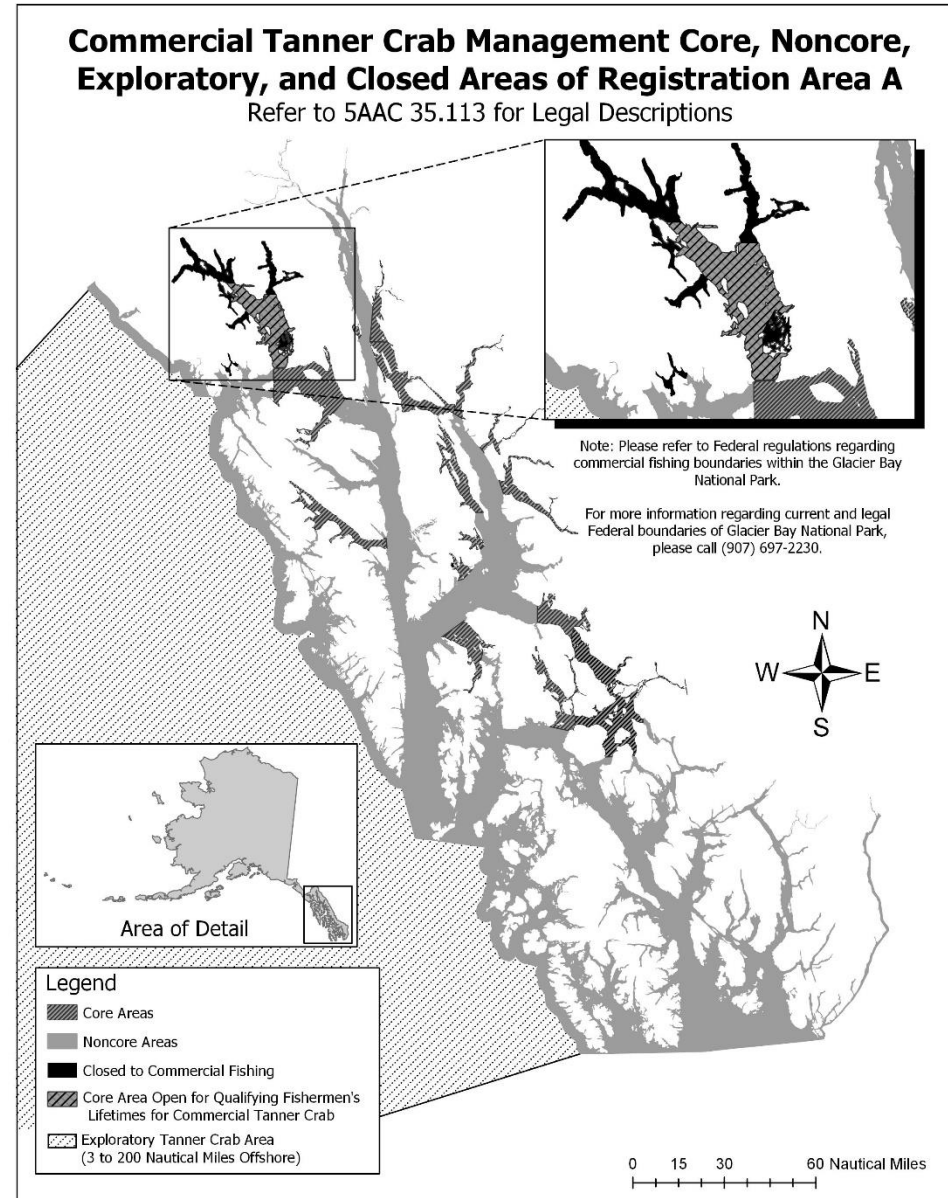
Southeast Alaska Tanner crab regional biomass (survey and non areas)



Tanner Crab Assessment & Management

● Management Overview

- Limited entry (75 permits)
- Males only, 5.5-inch minimum CW
- Pots limited to 80 pots per vessel
- Logbooks required



Tanner Crab Assessment & Management



- **Management Overview**

- Limited entry (75 permits)
- Males only, 5.5-inch minimum CW
- Pots limited to 80 pots per vessel
- Logbooks required

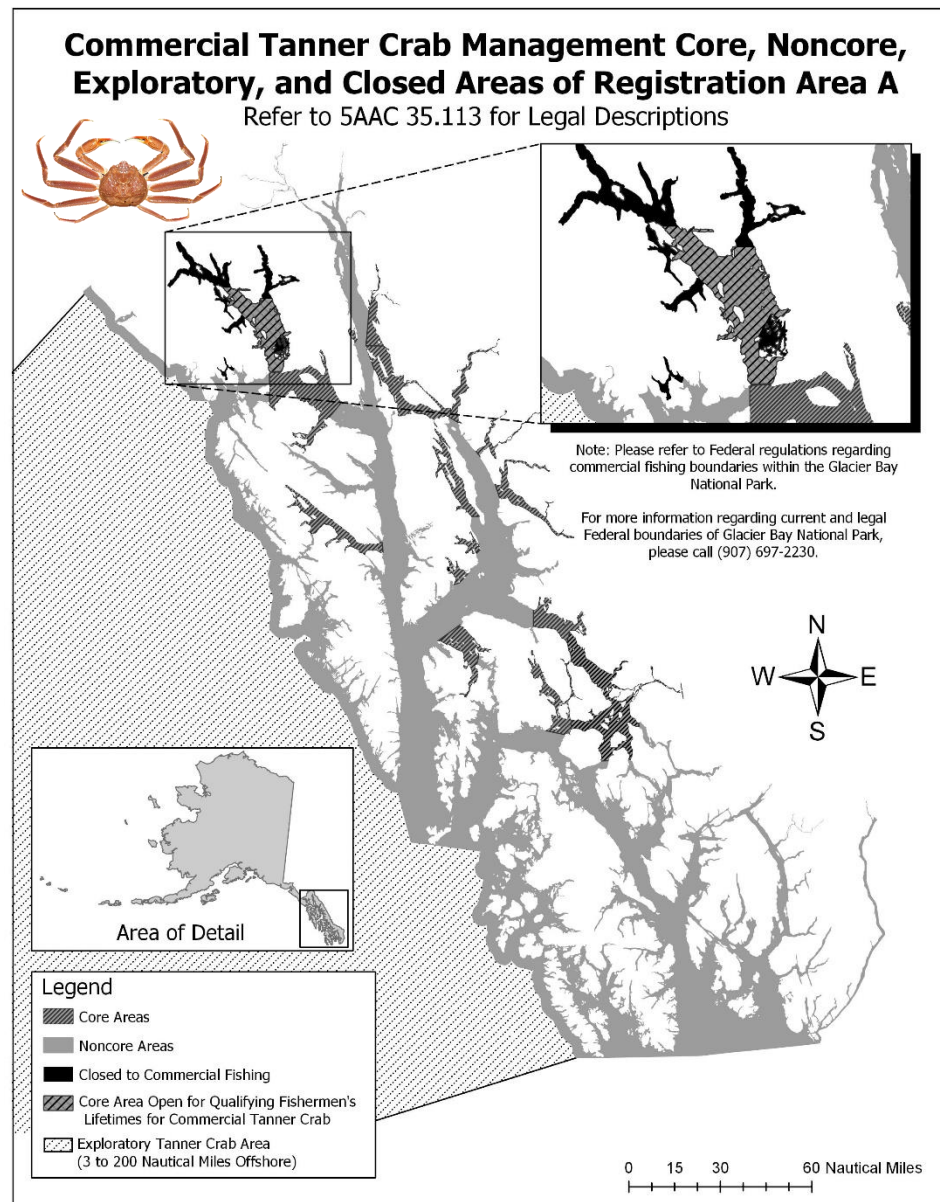
- **Harvest Strategy: 5 AAC 35.113**

- Effort based harvest strategy where areas open to fishing are split amongst core, noncore, and exploratory areas
- Season length determined by estimates of male mature biomass and effort (no target GHL or inseason management)
 - Core areas open 5–10 days
 - Noncore areas open for an additional 5 days
 - Exploratory areas open for an additional 19 days

Pots Registered	Additional Fishing Days	Additional Fishing Days
	<i>Mature Biomass is Between 2,300,000 and 5,500,000 lb</i>	<i>Mature Biomass is Greater than 5,500,000 lb</i>
1,600 – 2,399	4 Additional Days	5 Additional Days
2,400 – 3,199	3 Additional Days	4 Additional Days
3,200 – 3,999	2 Additional Days	3 Additional Days
4,000 – 5,599	1 Additional Days	2 Additional Days
5,600 – 7,000	0 Additional Days	1 Additional Days

Tanner Crab Assessment & Management

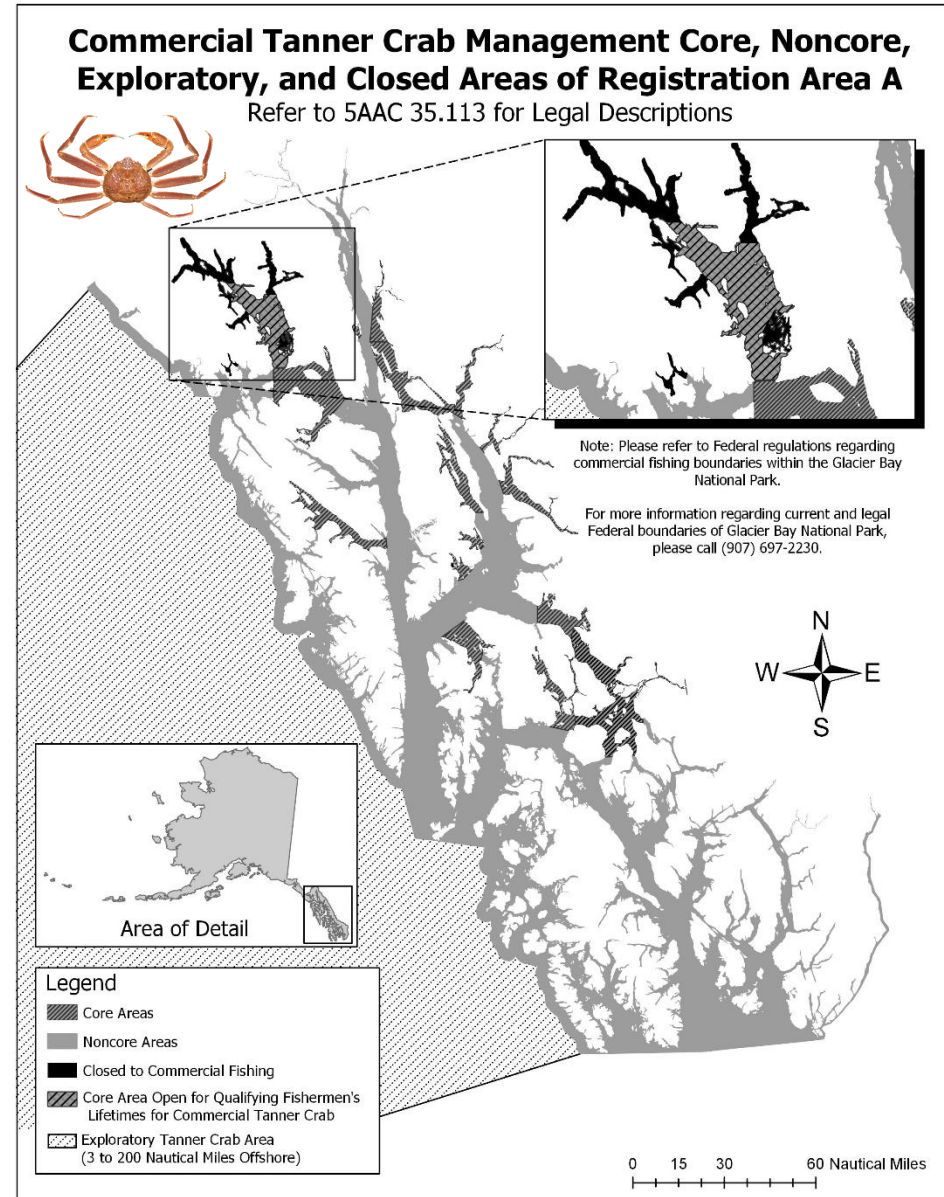
Proposal 195: extends fishing time for the commercial fishery in exploratory areas from 14 to 28 days.



Tanner Crab Assessment & Management

Proposal 195: extends fishing time for the commercial fishery in exploratory areas from 14 to 28 days.

Proposal 197: modify definitions for noncore and exploratory areas when there has not been effort in the past 3 seasons.

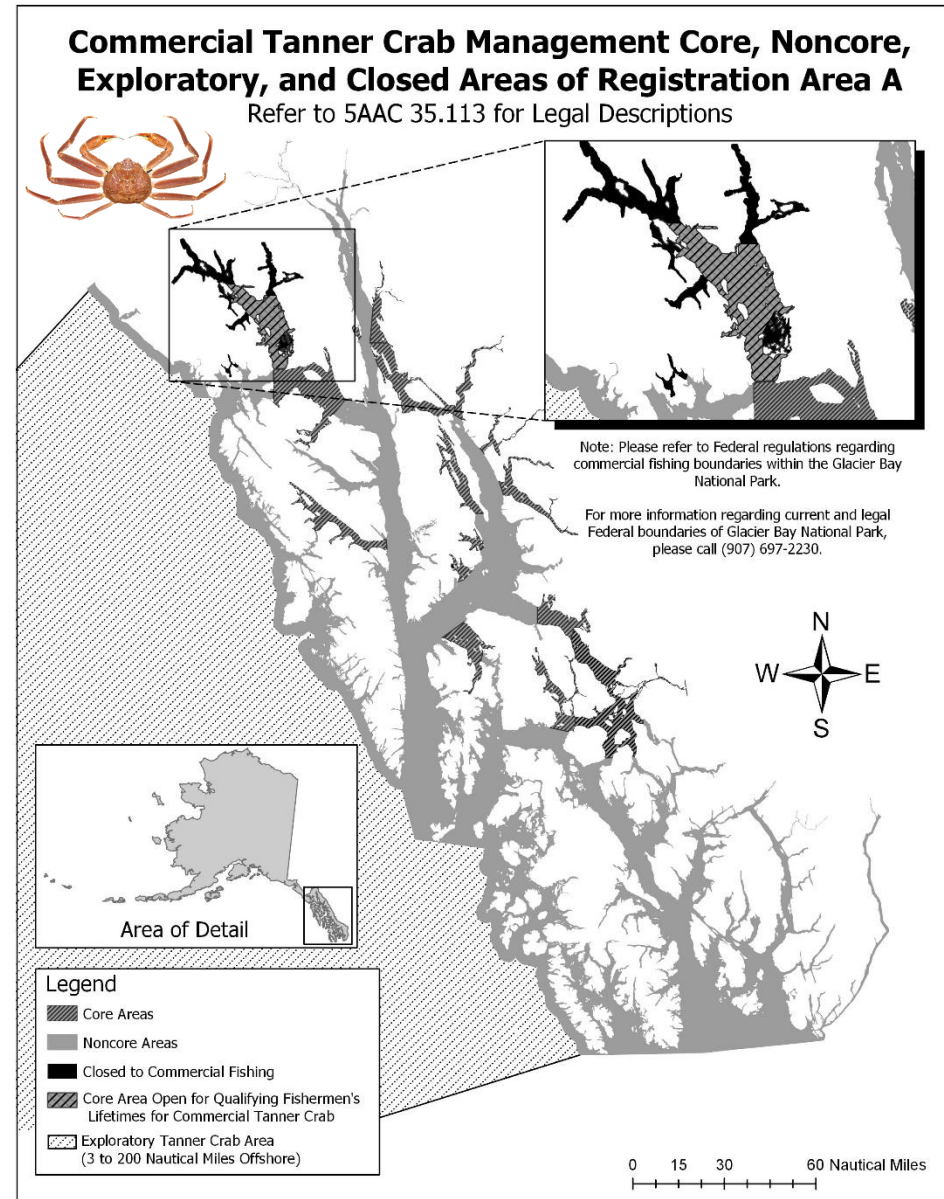


Tanner Crab Assessment & Management

Proposal 195: extends fishing time for the commercial fishery in exploratory areas from 14 to 28 days.

Proposal 197: modify definitions for noncore and exploratory areas when there has not been effort in the past 3 seasons.

Proposal 198: adopt a fixed start date of February 20th for the commercial Tanner and golden king crab fisheries.



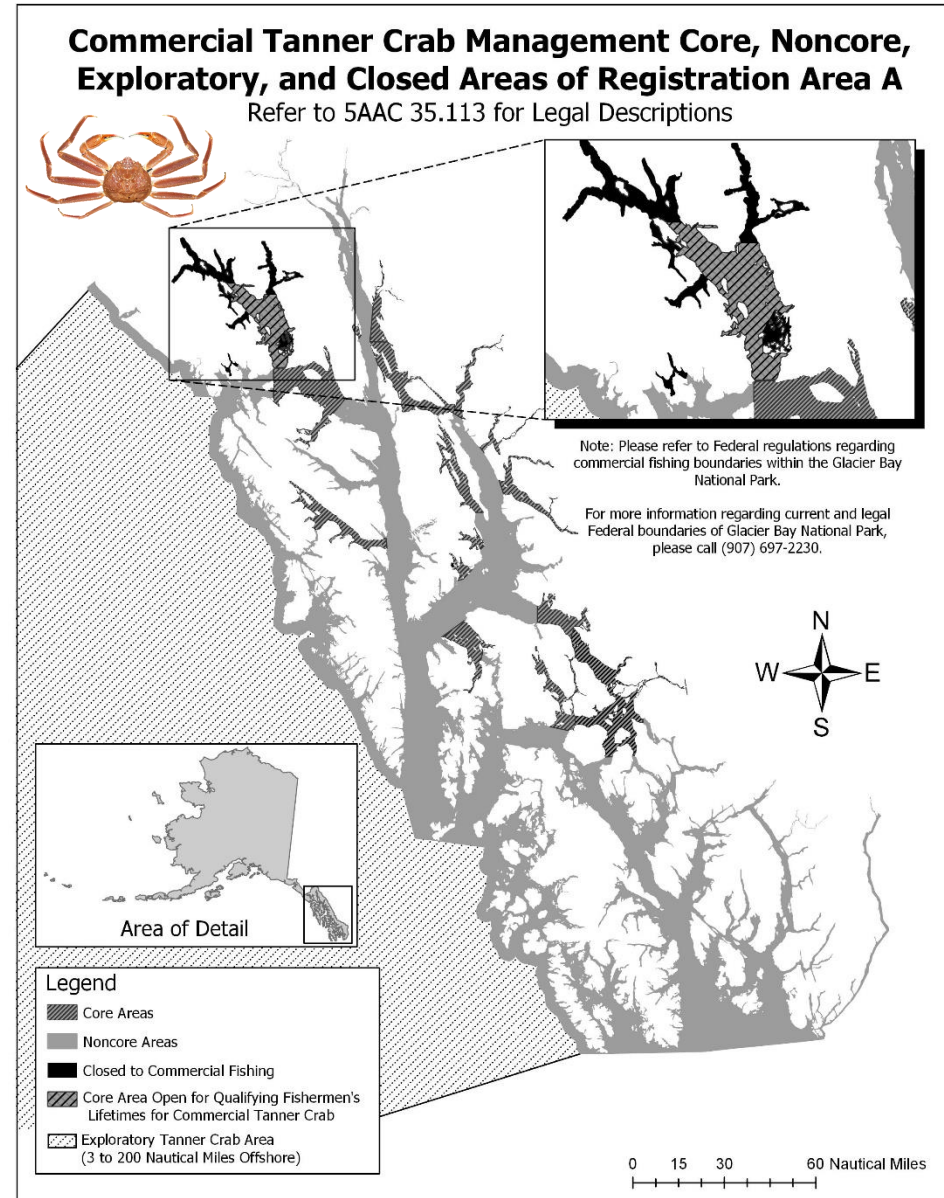
Tanner Crab Assessment & Management

Proposal 195: extends fishing time for the commercial fishery in exploratory areas from 14 to 28 days.

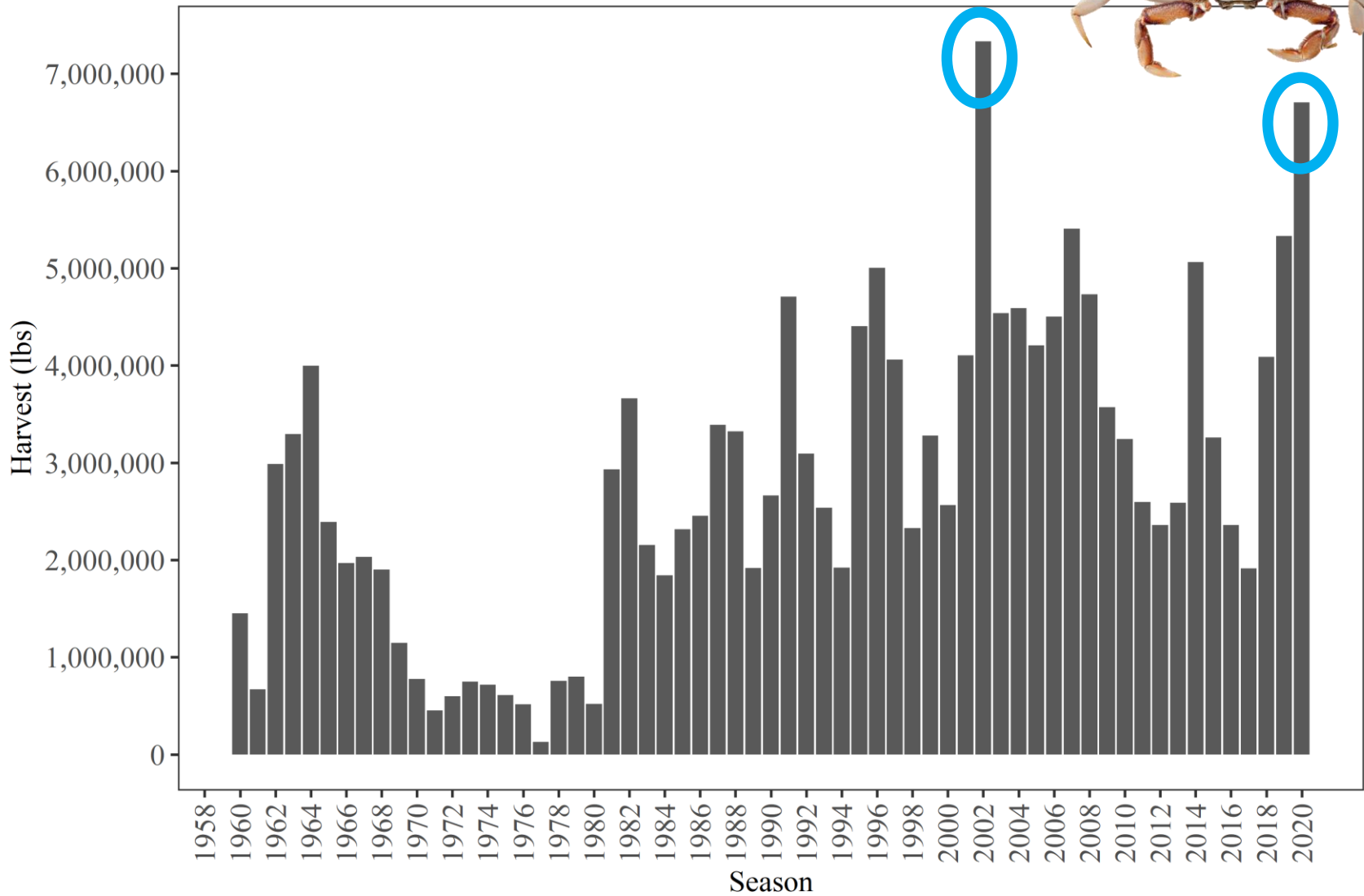
Proposal 197: modify definitions for noncore and exploratory areas when there has not been effort in the past 3 seasons.

Proposal 198: adopt a fixed start date of February 20th for the commercial Tanner and golden king crab fisheries.

Proposal 199: allow commercial king and Tanner crab fishermen to operate subsistence, personal use, or sport shrimp or Dungeness crab pots prior to and during an open Tanner crab or king crab fishery



Dungeness Crab Assessment & Management



Dungeness Crab Assessment & Management

- **Assessment:**
 - No fishery-independent assessment



Dungeness Crab Assessment & Management

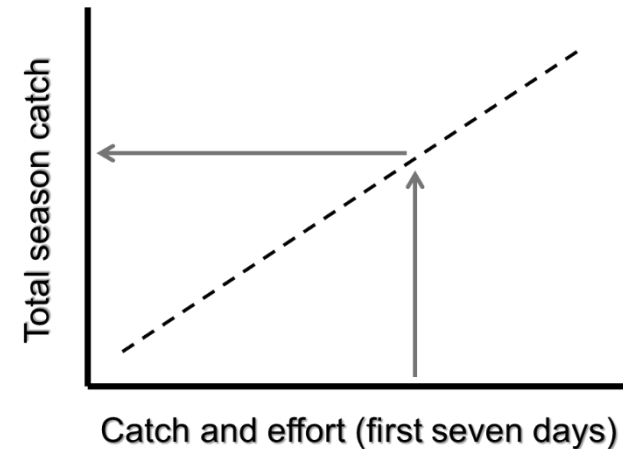


- **Assessment:**
 - No fishery-independent assessment
- **Management Overview:**
 - Limited entry (273 permits)
 - Males only, 6.5-inch minimum CW
 - Seasons:
 - Summer (June 15–August 15)
 - Fall (October 1–November 30)
 - Fall/Winter (October 1–February 28)
(Districts 1, 2, and a portion Section 13-B)
 - Pot limits based on permit (75, 150, 225, or 300 pots)
 - Vessel limit of 300 pots when stacking permits

Dungeness Crab Assessment & Management



- **Assessment:**
 - No fishery-independent assessment
- **Management Overview:**
 - Limited entry (273 permits)
 - Males only, 6.5-inch minimum CW
 - Seasons:
 - Summer (June 15–August 15)
 - Fall (October 1–November 30)
 - Fall/Winter (October 1–February 28)
(Districts 1, 2, and a portion Section 13-B)
 - Pot limits based on permit (75, 150, 225, or 300 pots)
 - Vessel limit of 300 pots when stacking permits



- **Management Plan: 5 AAC 32.146**

Harvest Projection Threshold

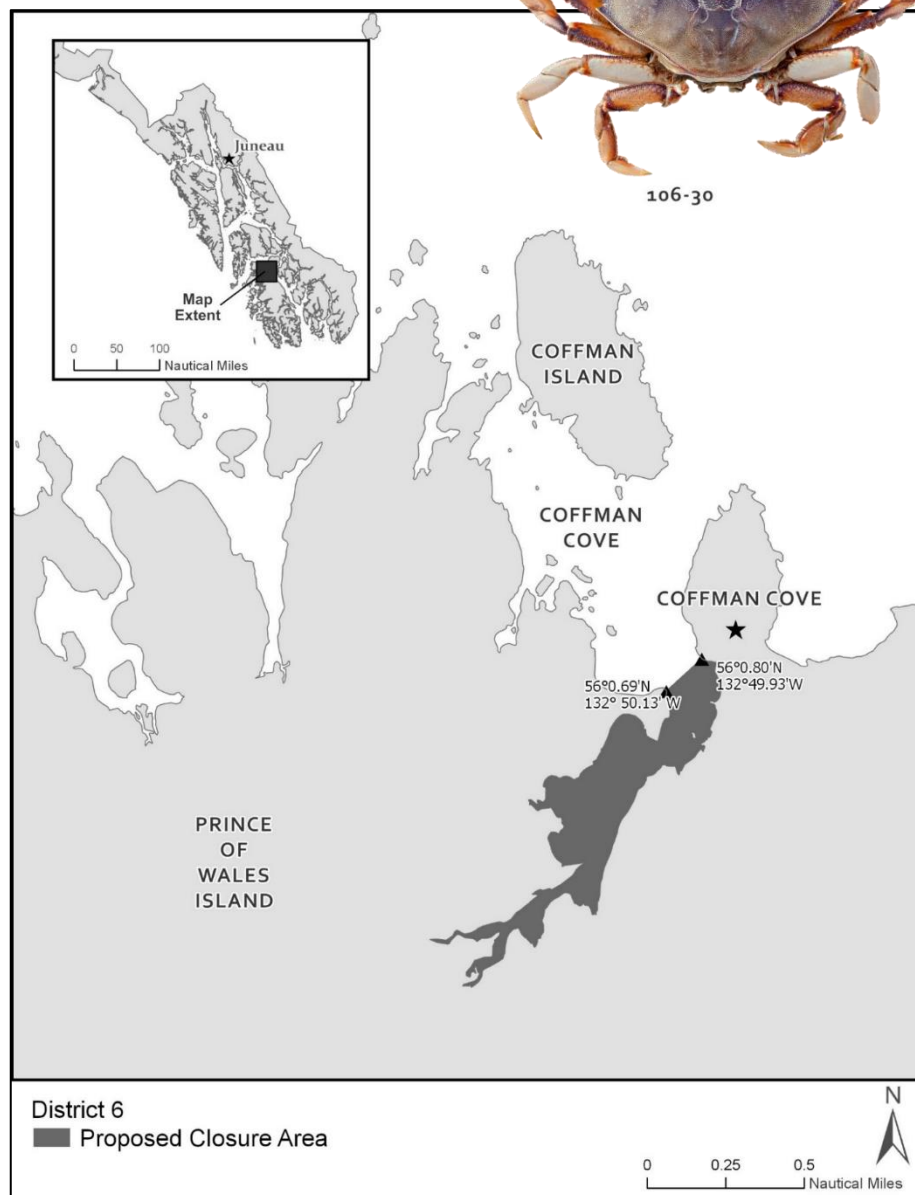
- Simple regression to predict the current season's catch, based on the catch and effort the first seven days.
- Based on:
 1. Pounds of crab landed within the first seven days
 2. Number of permits that made landings in the first seven days
 3. $\frac{7 \text{ day catch (lbs)}}{\text{season catch (lbs)}} = \text{ratio of 7 day catch to total season catch (lbs)}$

Dungeness Crab Assessment & Management

- Establish Area Closures for Commercial Fishing



106-30

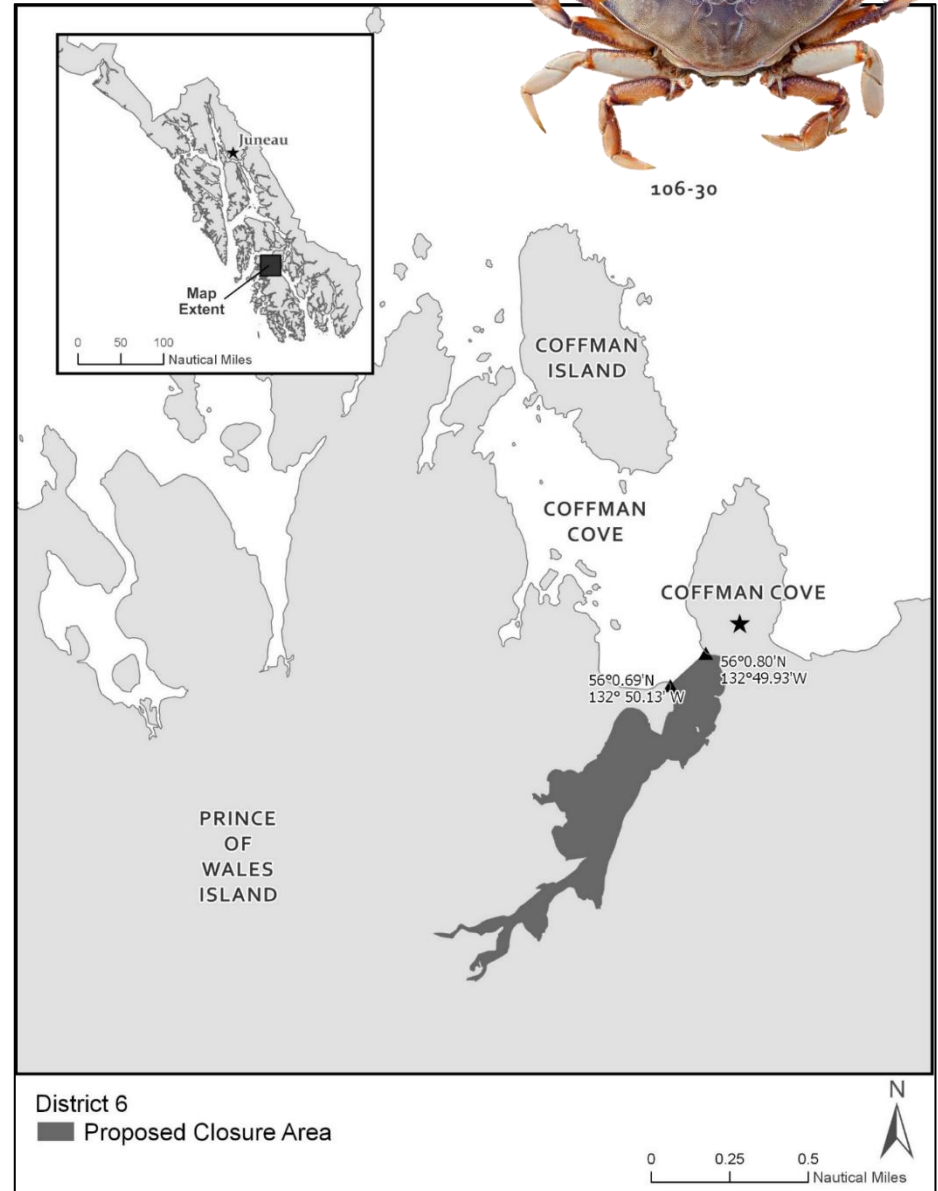


Dungeness Crab Assessment & Management



106-30

- **Establish Area Closures for Commercial Fishing**
 - **Proposal 200:** establish area closure to the commercial and nonresident harvest around Klawock.

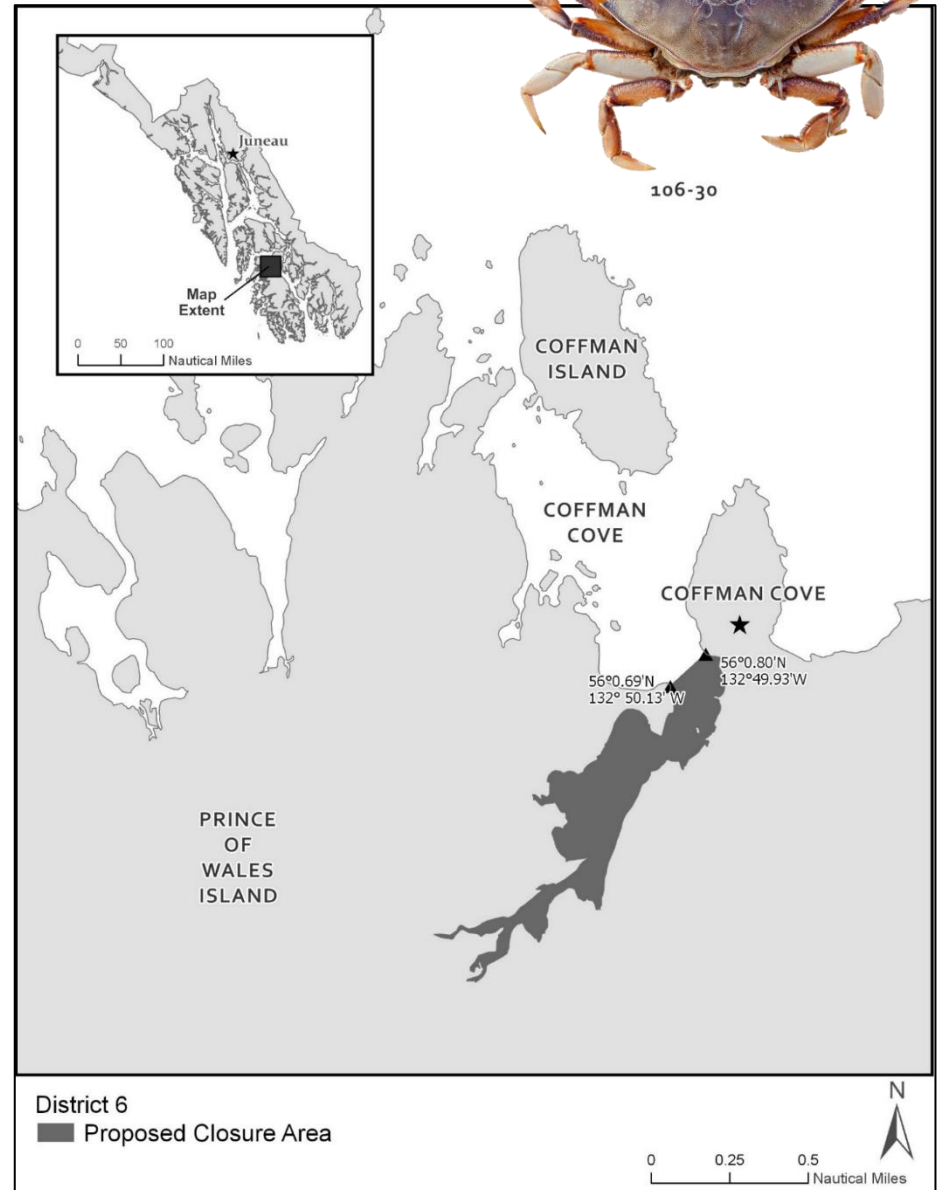


Dungeness Crab Assessment & Management



106-30

- **Establish Area Closures for Commercial Fishing**
 - **Proposal 200:** establish area closure to the commercial and nonresident harvest around Klawock.
 - **Proposal 201:** expand boundaries of Sitka Sound Special Use Area on seasonal basis that would close the commercial season from June 15–August 15.

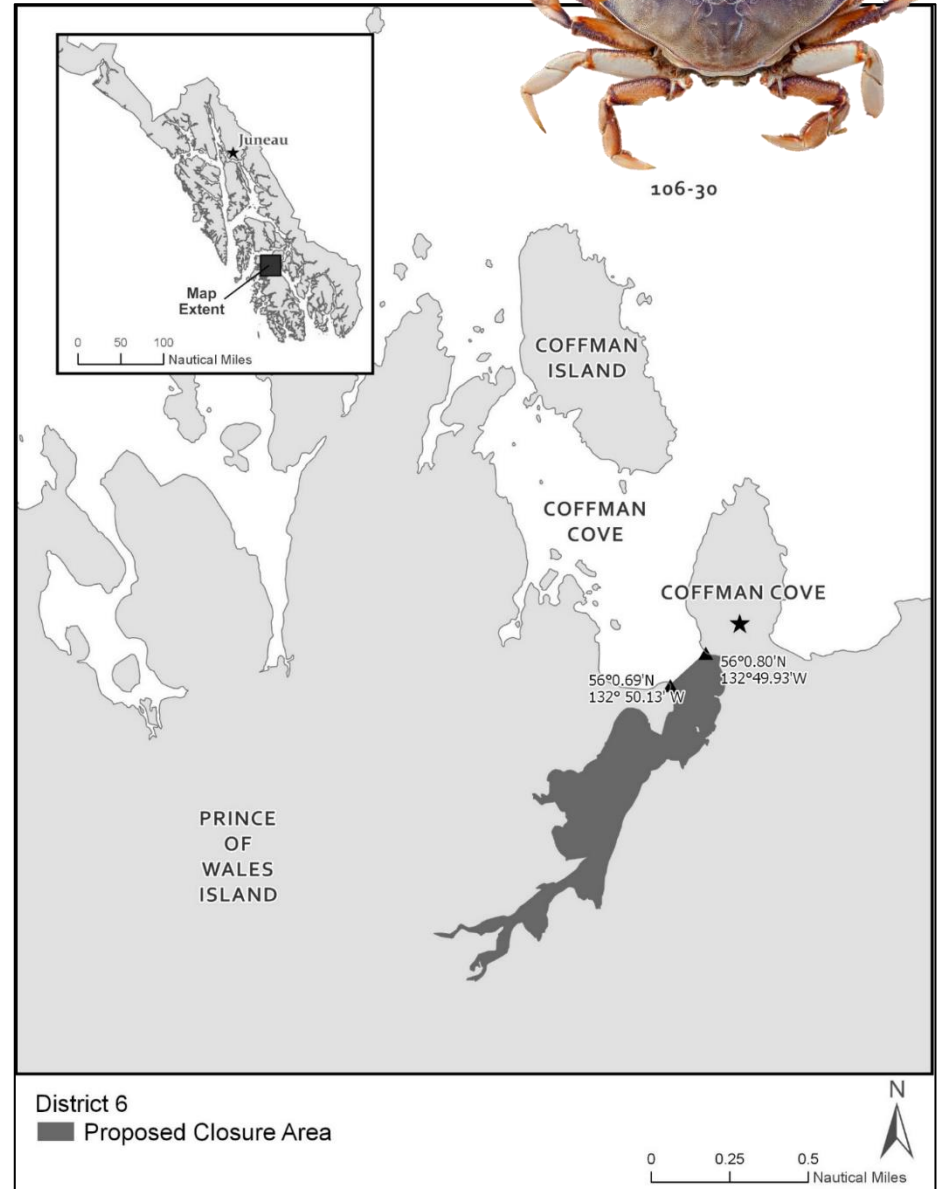


Dungeness Crab Assessment & Management

- **Establish Area Closures for Commercial Fishing**
 - **Proposal 200:** establish area closure to the commercial and nonresident harvest around Klawock.
 - **Proposal 201:** expand boundaries of Sitka Sound Special Use Area on seasonal basis that would close the commercial season from June 15–August 15.
 - **Proposals 205, 207, 208, & 210:** establish area closures to commercial fishing around Coffman Cove, Whale Pass, Kasaan Bay, and Natzuhini Bay and Sukkwan Strait.



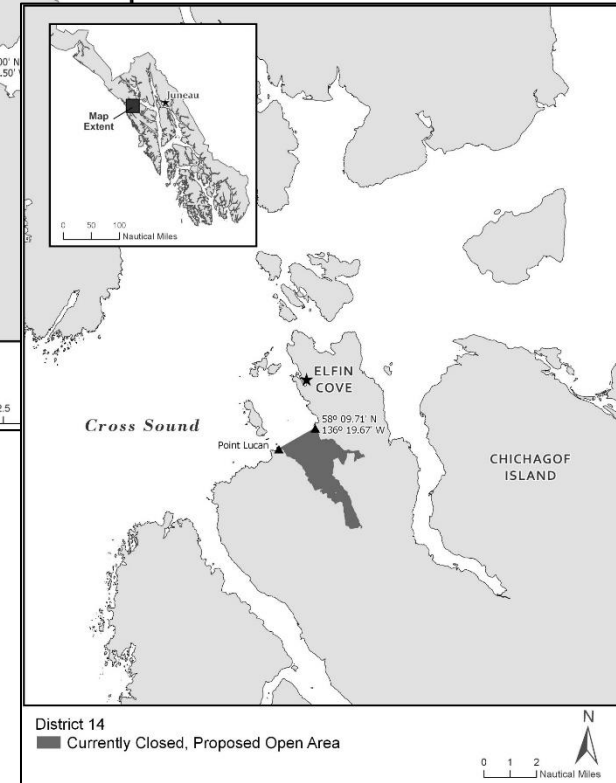
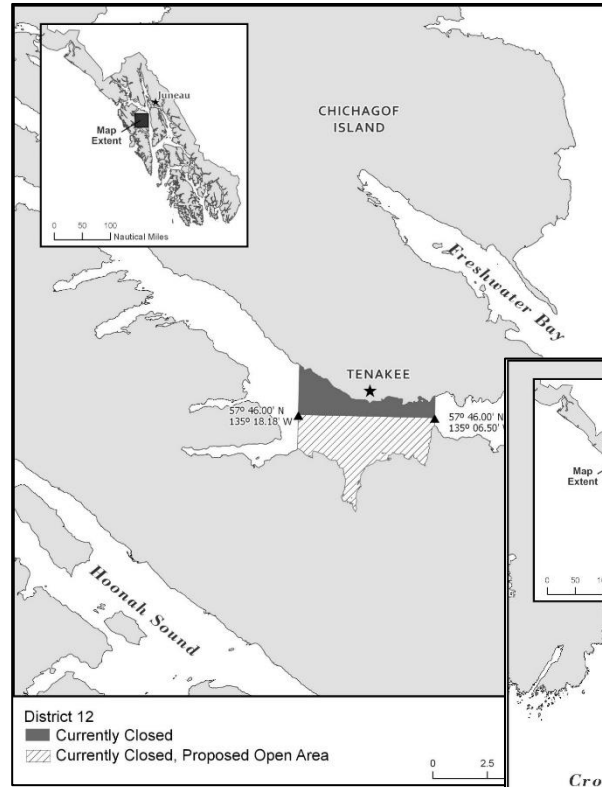
106-30



Dungeness Crab Assessment & Management



- Reduce and/or Repeal Commercial Fishery Closures

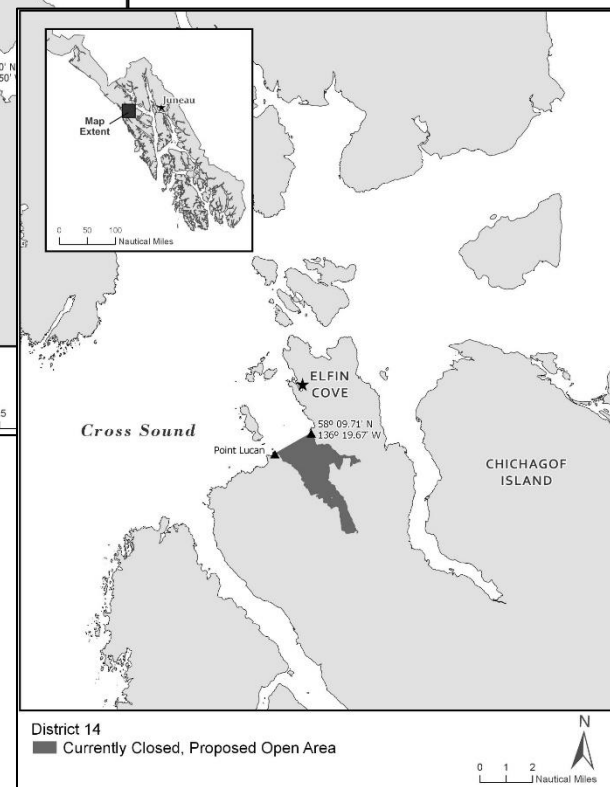
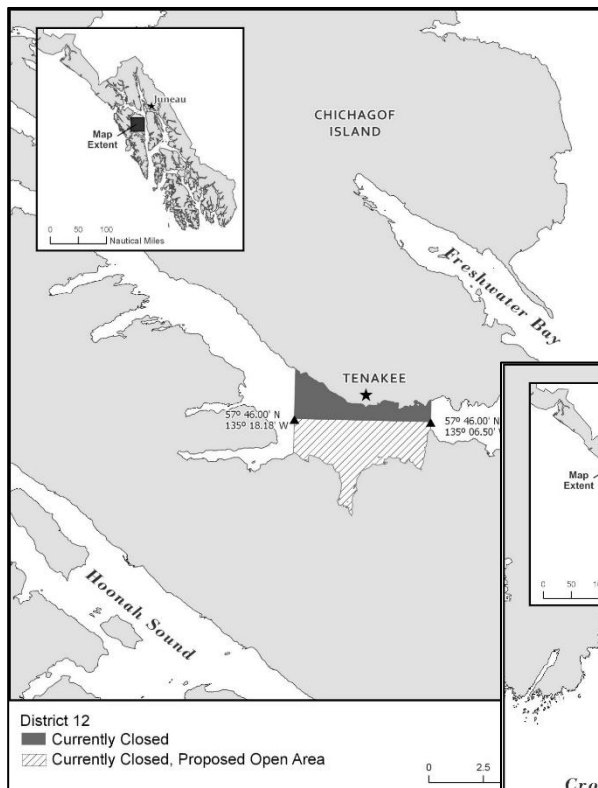


Dungeness Crab Assessment & Management



- **Reduce and/or Repeal Commercial Fishery Closures**

- **Proposal 202:** reduce the size of the area closed to commercial fishing around Tenakee Inlet.

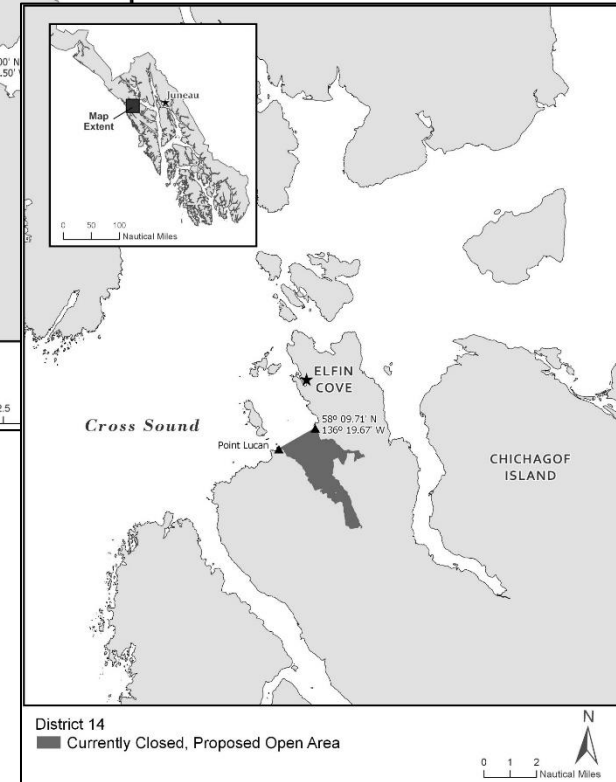
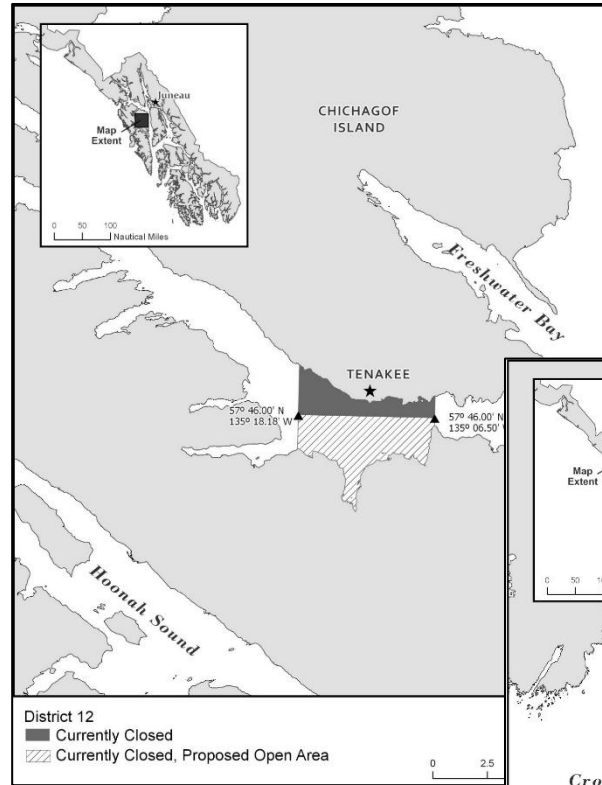


Dungeness Crab Assessment & Management

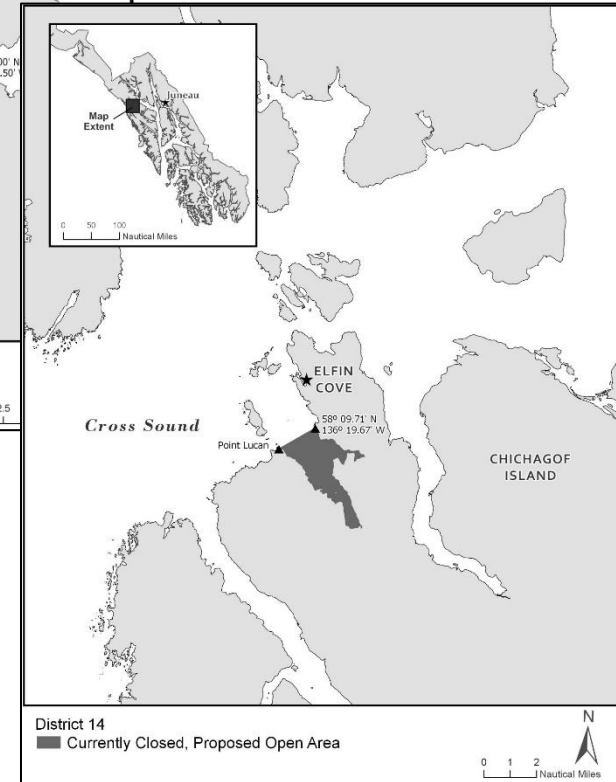
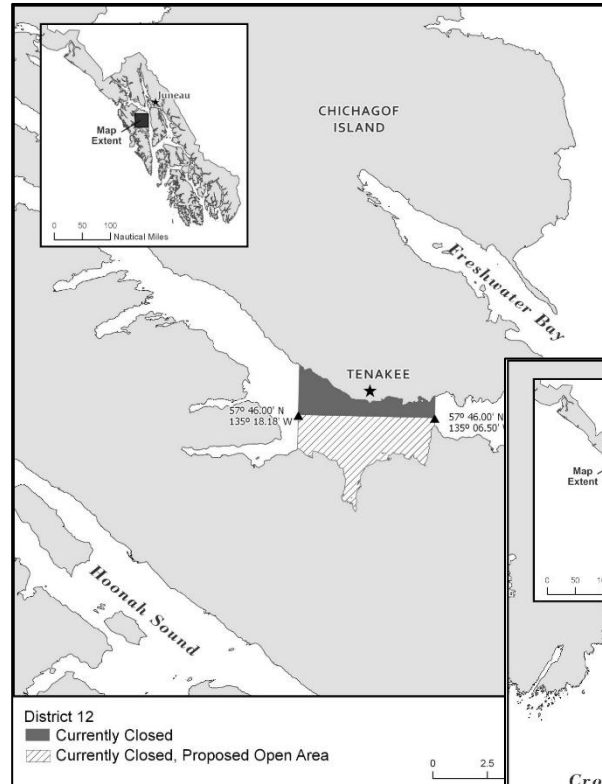


● Reduce and/or Repeal Commercial Fishery Closures

- **Proposal 202:** reduce the size of the area closed to commercial fishing around Tenakee Inlet.
- **Proposal 203:** seeks to repeal the area closed to commercial fishing in Port Althorp.



Dungeness Crab Assessment & Management



● Reduce and/or Repeal Commercial Fishery Closures

- **Proposal 202:** reduce the size of the area closed to commercial fishing around Tenakee Inlet.
- **Proposal 203:** seeks to repeal the area closed to commercial fishing in Port Althorp.
- **Proposal 211:** change season description for the Sitka Sound Special Use Area for commercial fishing.

Dungeness Crab Assessment & Management

- **Gear**

- **Proposals 212 & 213:** allow permit holders seven days to remove their stored pot gear from the water following a fall season closure.
- **Proposal 214:** clarify the description of lawful gear for crab pots



Thank you/Questions

