

Southeast Alaska/Yakutat Commercial Salmon Troll Fishery

Alaska Board of Fisheries

Jan. 4–15, 2022

Ketchikan

RC 3 – Tab 17

Grant Hagerman

Regional Salmon Troll Management Biologist

Division of Commercial Fisheries



Overview

- Abundance-based management
- King salmon harvest limit
- Southeast Alaska troll fishery
 - Winter
 - Spring
 - Summer

King Salmon Allowable Catch

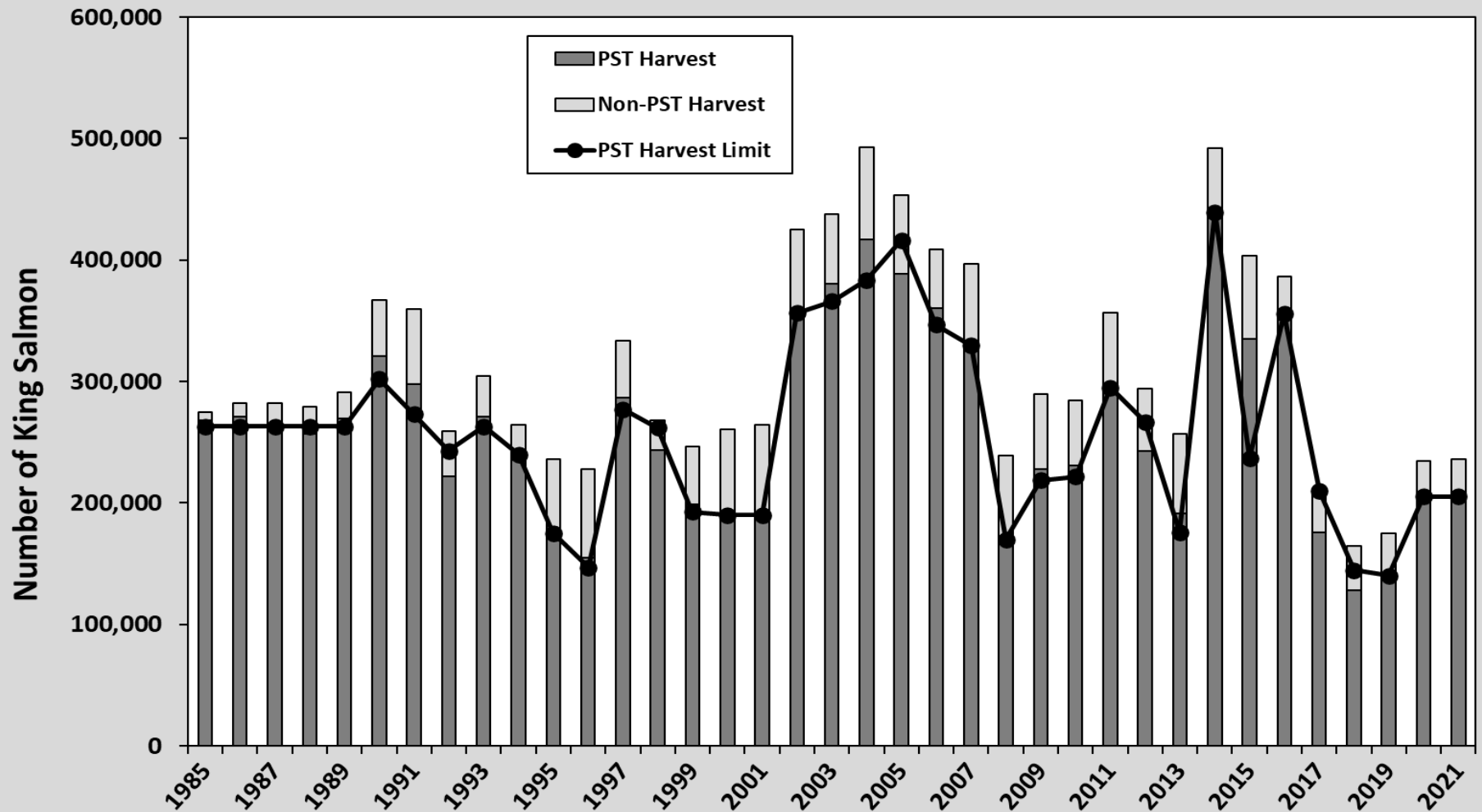
- Abundance-based management, fisheries managed to provisions of the new 2019-2028 Pacific Salmon Treaty (treaty) agreement.
- Annual all-gear total allowable catch determined by the Southeast Alaska/Yakutat (SEAK) early winter District 113 Power Troll fishery CPUE metric estimated from data collected during statistical weeks 41–48 (Oct-Nov).
- CPUE metric translated to a pre-season annual catch limit from a seven tier-based allowable catch table.
- Treaty harvest limit is allocated among gear groups with accounting year October-September.

CPUE-based Tier	AI-based Tier	Catch Limit
Less than 2.0	Less than 0.875	Commission Determination
2.0 to less than 2.6	Between 0.875 and 1.0	111,833
2.6 to less than 3.8	Between 1.005 and 1.2	140,323
3.8 to less than 6.0	Between 1.205 and 1.5	205,165
6.0 to less than 8.7	Between 1.505 and 1.8	266,585
8.7 to less than 20.5	Between 1.805 and 2.2	334,465
20.5 and greater	Greater than 2.2	372,921

King Salmon Allocation

- Purse Seine = 4.3% of all-gear treaty harvest limit
- Drift Gillnet = 2.9% of all-gear treaty harvest limit
- Set Gillnet = 1,000 fish (historical average)
- Net gear total subtracted from all-gear harvest limit
- Remainder split between troll and sport fisheries:
 - 80% to troll
 - 20% to sport

All-Gear King Salmon Harvest

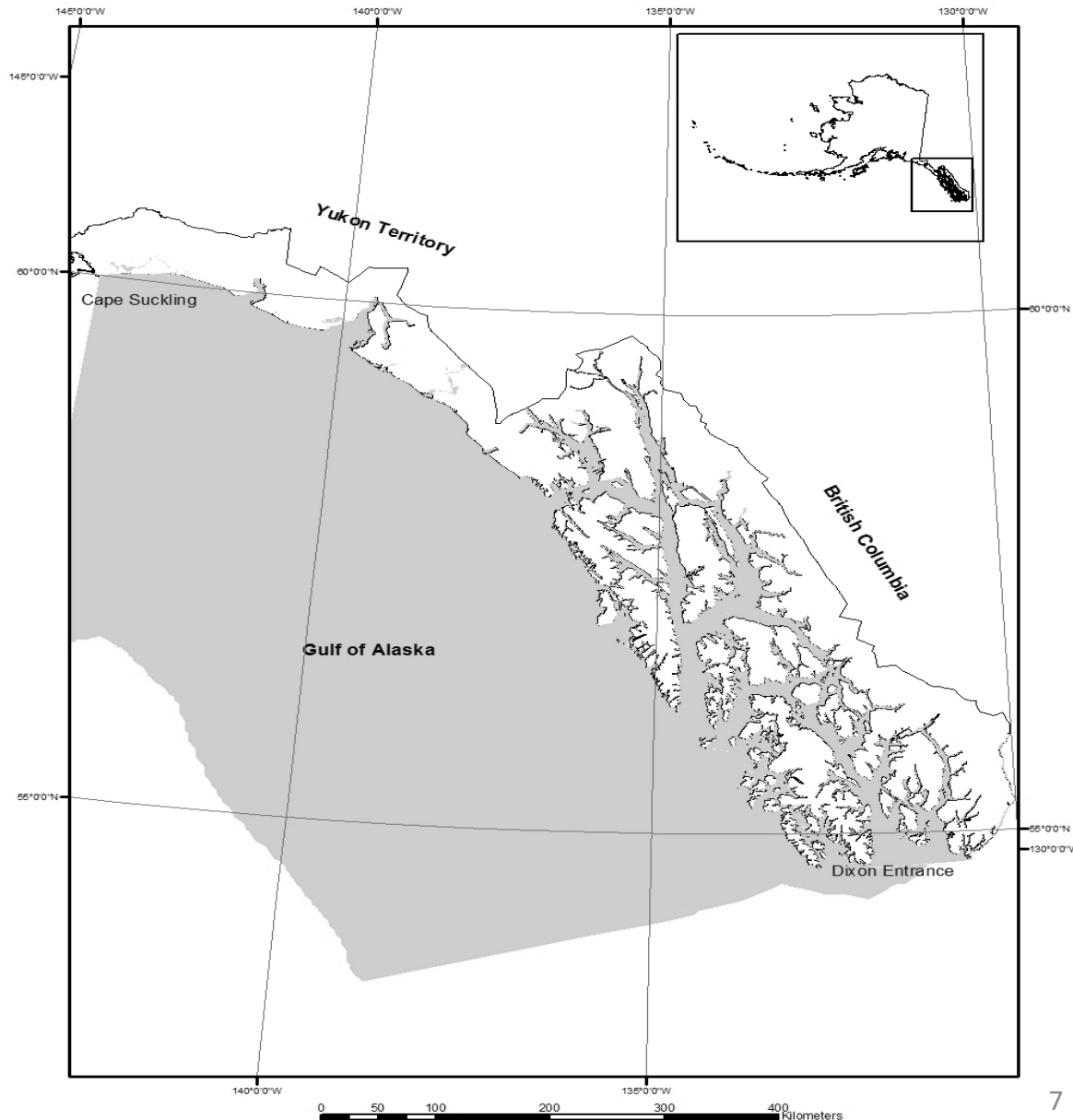


Southeast Alaska Troll Fishery

- Primarily targets king and coho salmon
- Chum salmon also targeted in recent years
- 20-yr average of 1,000 troll permits fished annually, has declined each of last 7-years to a record low in 2021.
- Troll fishery open almost year-round
 - Winter fishery
 - Spring Fishery
 - Summer Fishery

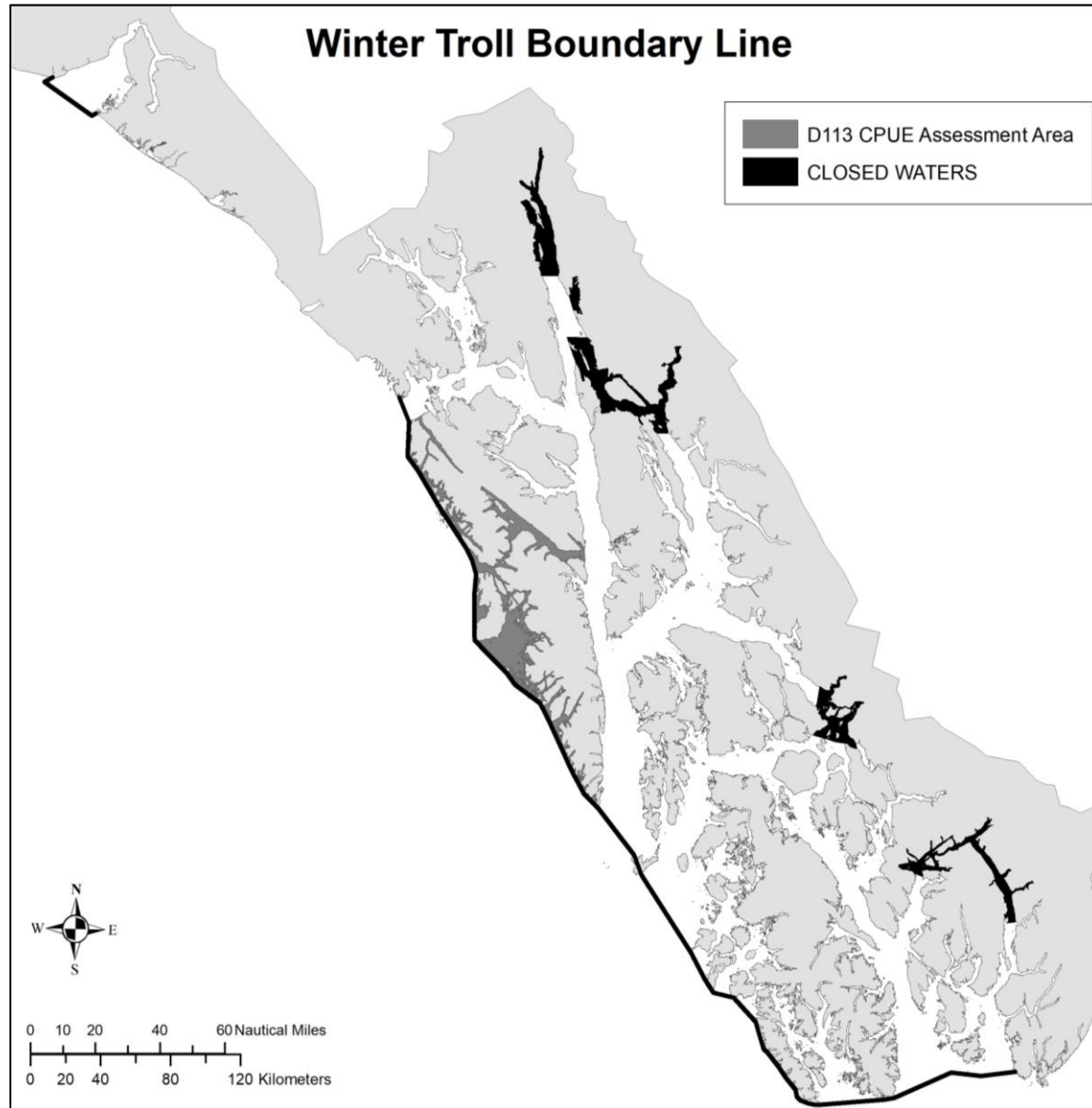
Waters of Southeast Alaska/Yakutat

- State waters (within 3-miles of outer coast)
- Exclusive Economic Zone (outside 3-miles)
- Open waters vary by season

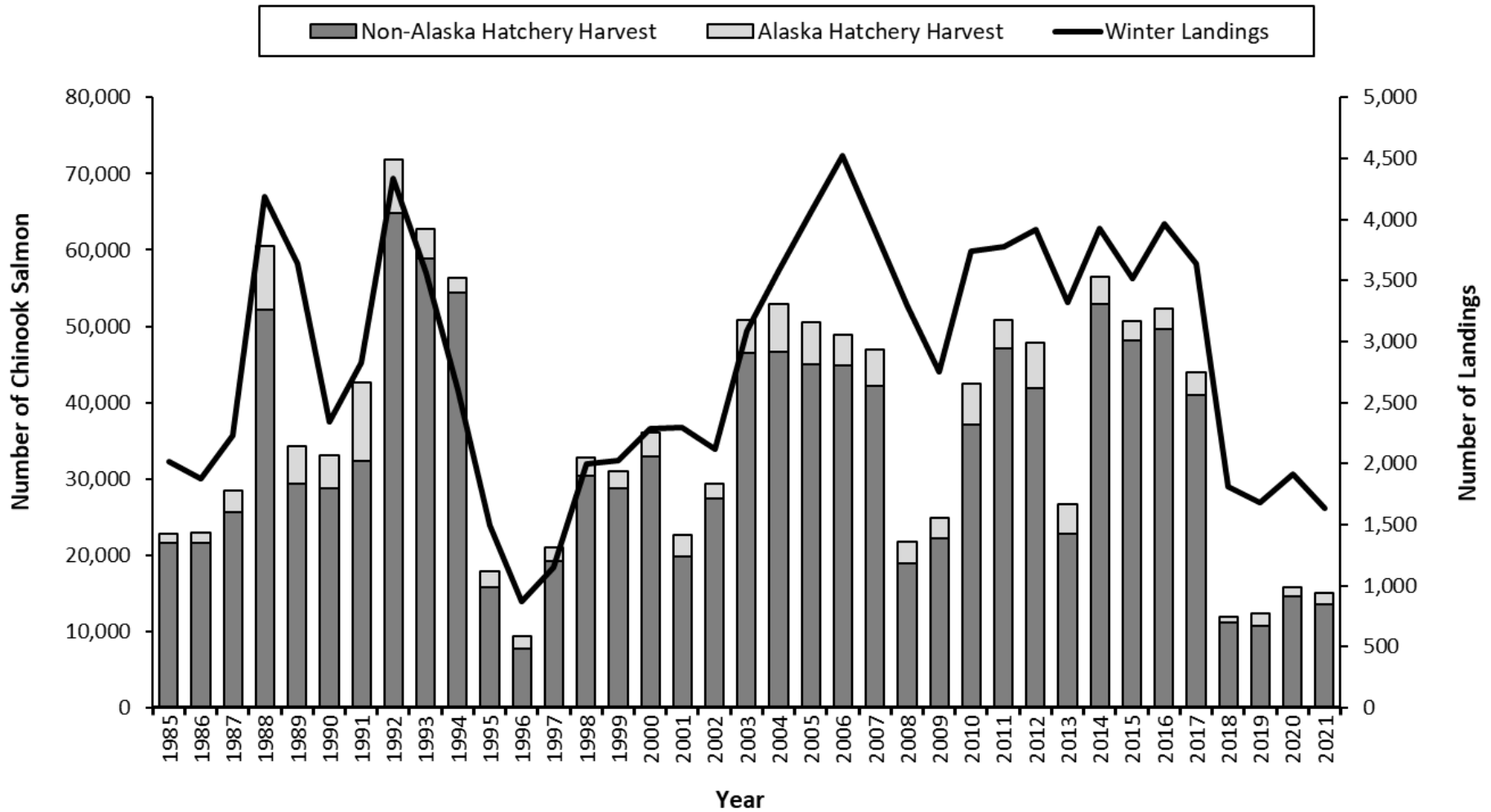


Winter King Salmon Fishery

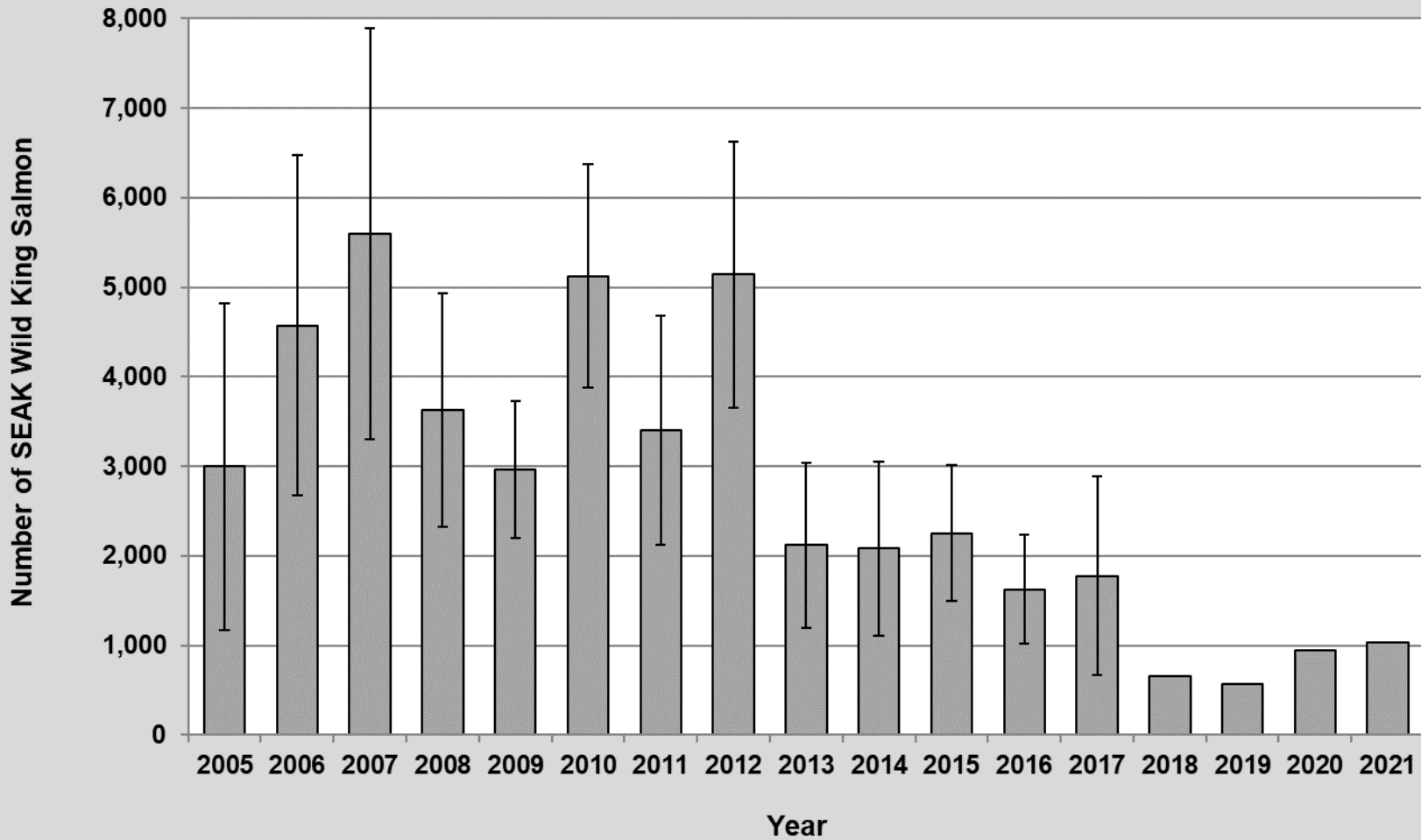
- Open October 11-April 30, or until Guideline Harvest Level is reached
- Target king salmon, restricted to inside winter boundary line, or “surflines”
- Proposal:
 - 115 modify start date of winter fishery



Winter King Salmon Fishery

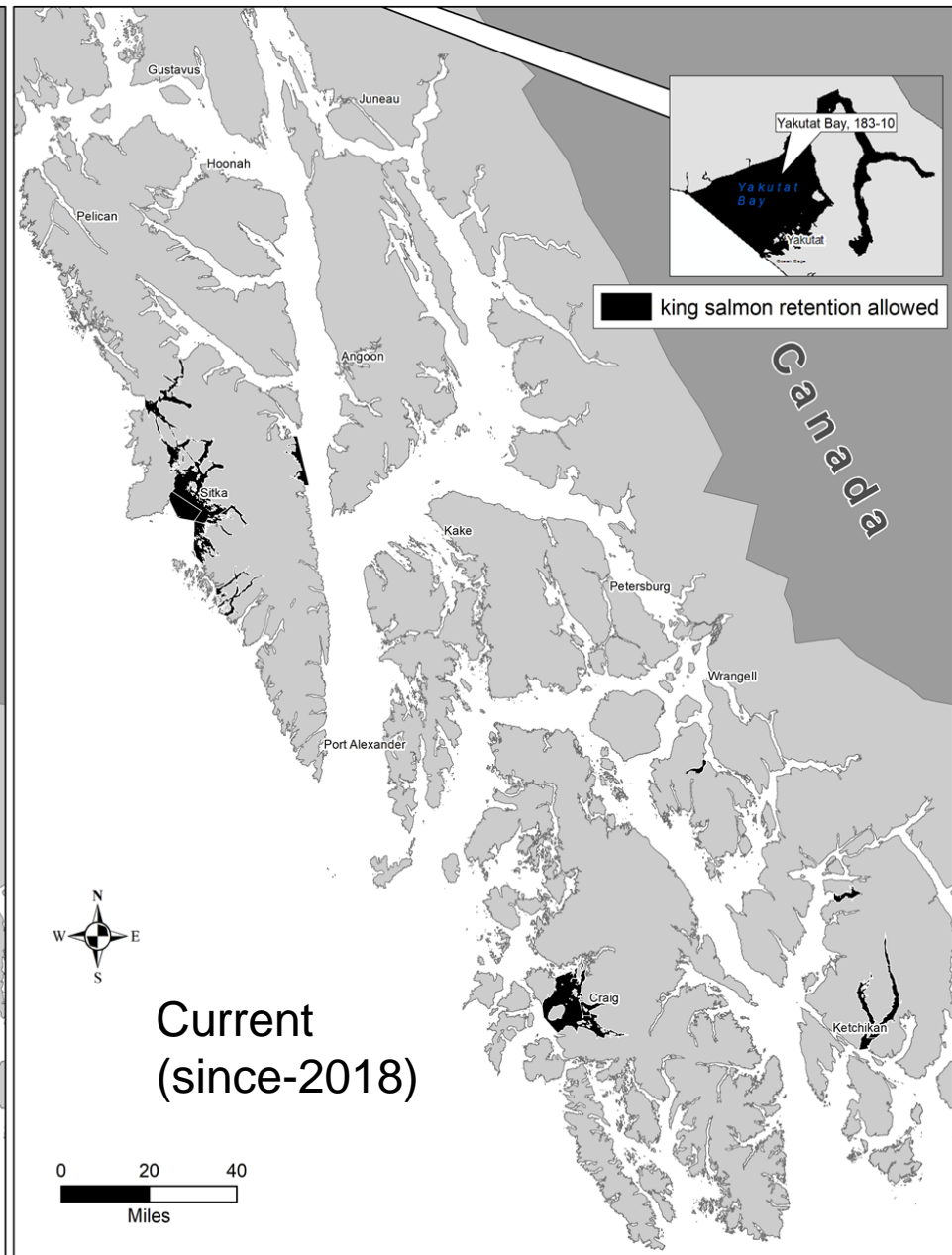
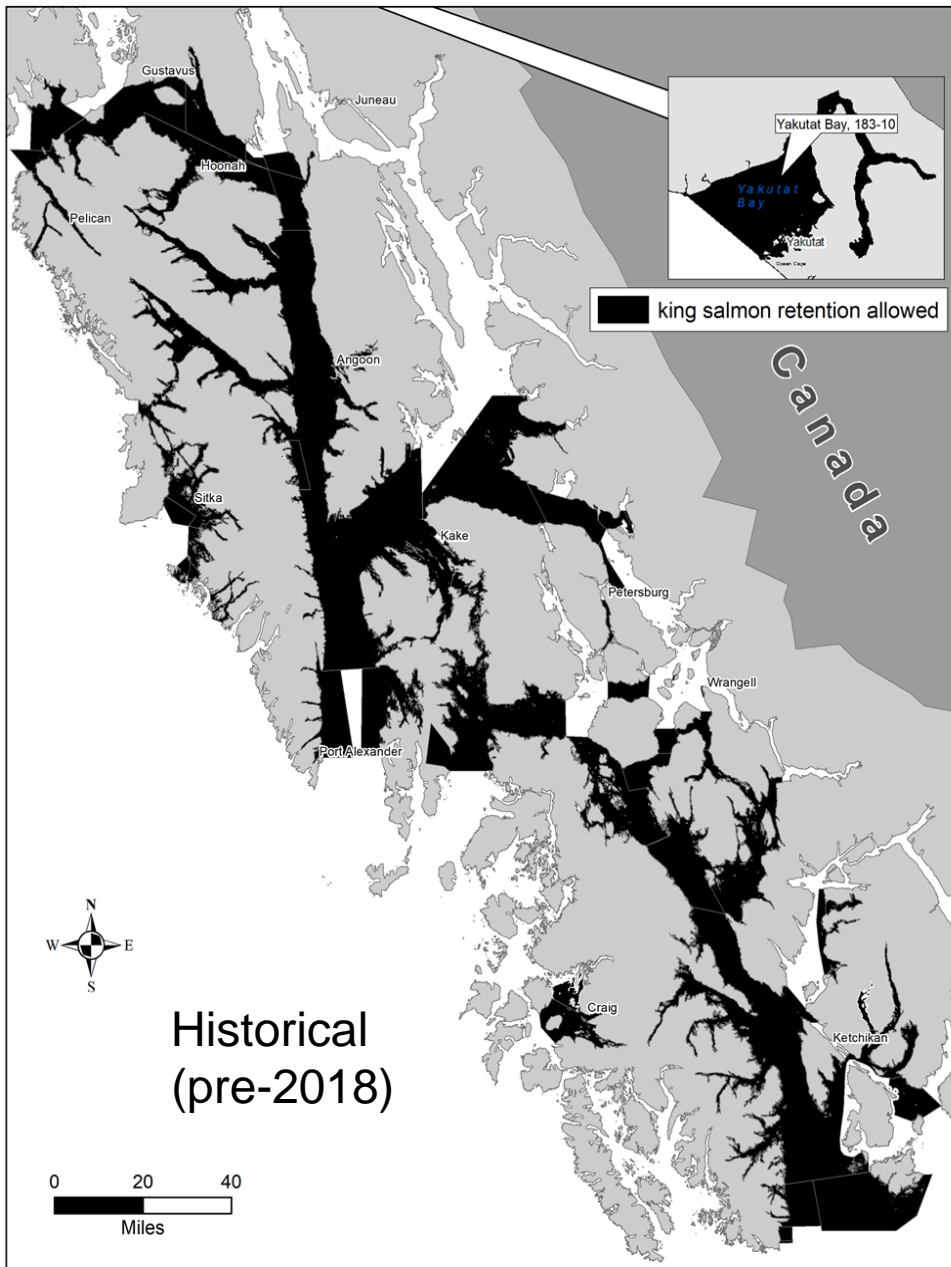


Late Winter Troll Harvest of Wild SEAK King Salmon Genetic MSA and CWT based estimates

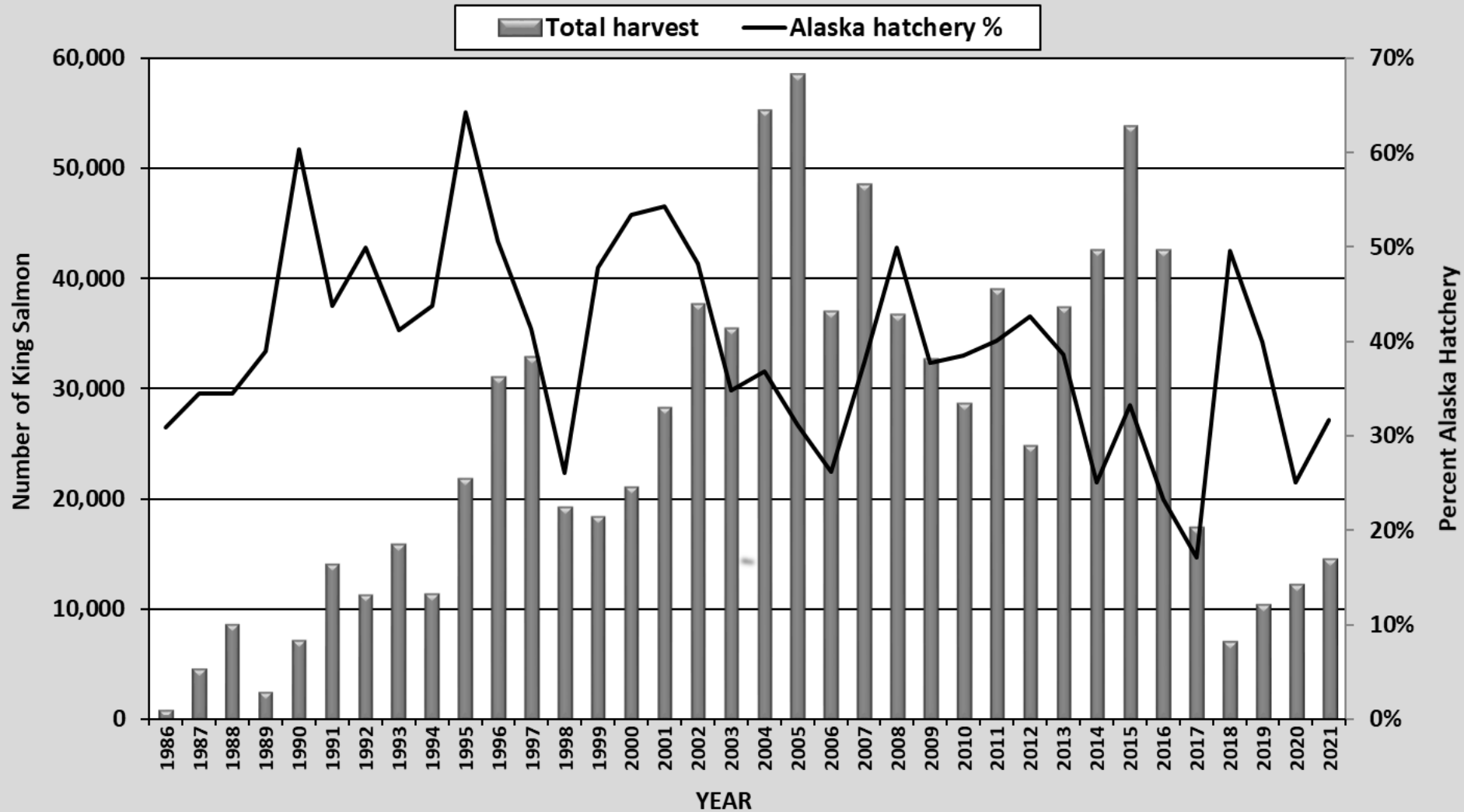


Spring Troll Fisheries

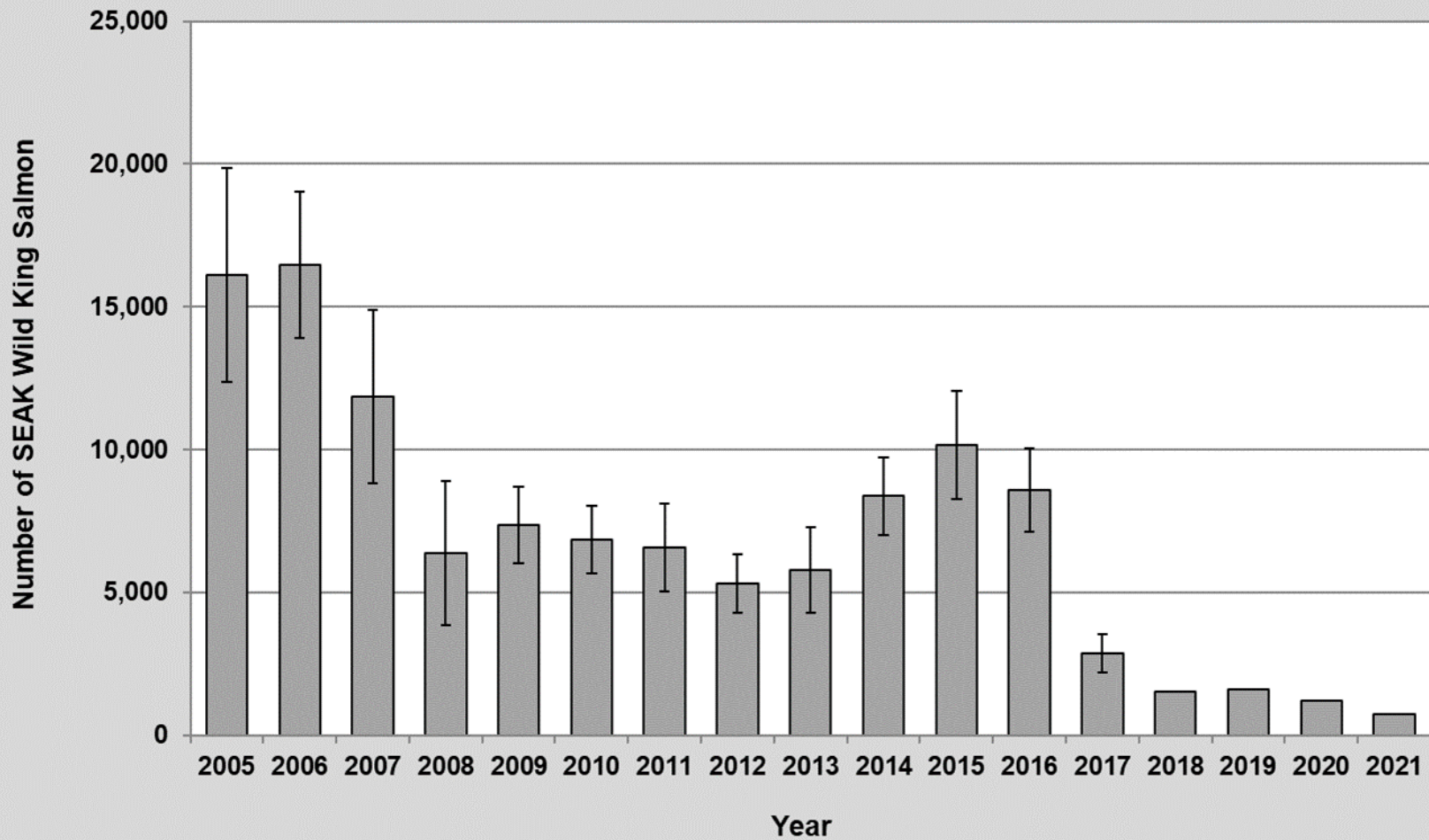
- Open May 1 – June 30
- Current fisheries located near hatcheries or release sites; target Alaska hatchery-produced king salmon.
- Harvest of treaty king salmon is limited according to the percentage of the Alaska hatchery fish taken in each fishery.
- Spring fisheries are managed individually on a weekly basis by emergency order.
- Hatchery-produced chum salmon also targeted
- Proposals:
 - 87 increases fishery opening lengths to mirror days open to sport
 - 90 changes trigger criteria for liberalizing harvest cap tiers
 - 92 reduce minimum size limit for king salmon in Terminal Harvest Areas
 - 114 allow use of fishing rods in conjunction with downriggers by hand troll



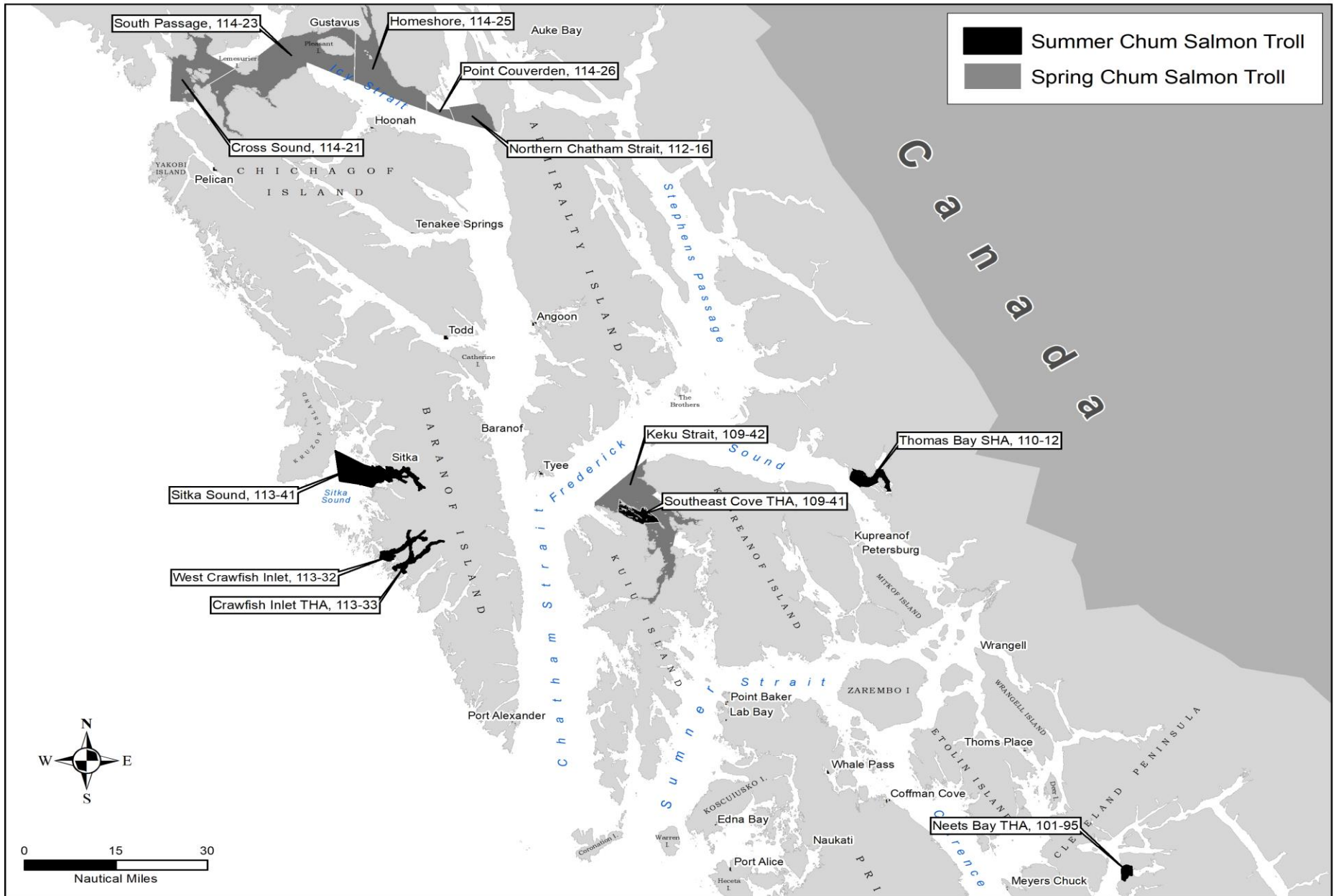
Spring Fishery King Salmon Harvests, 1986–2021



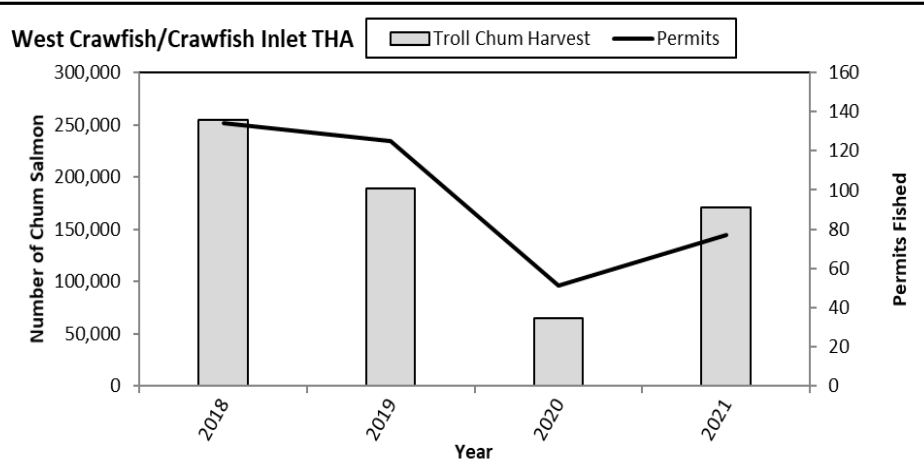
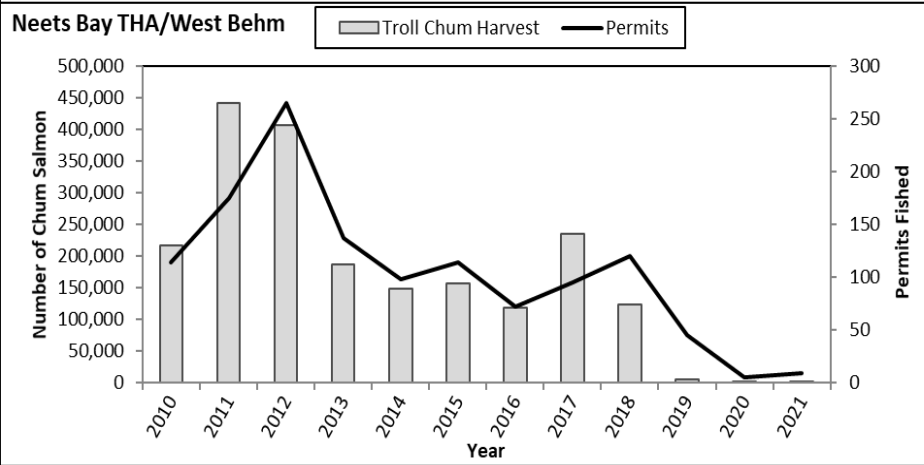
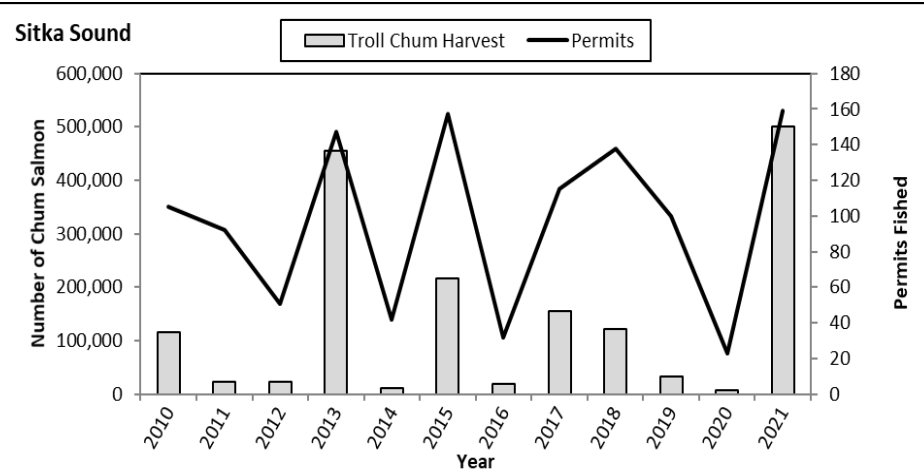
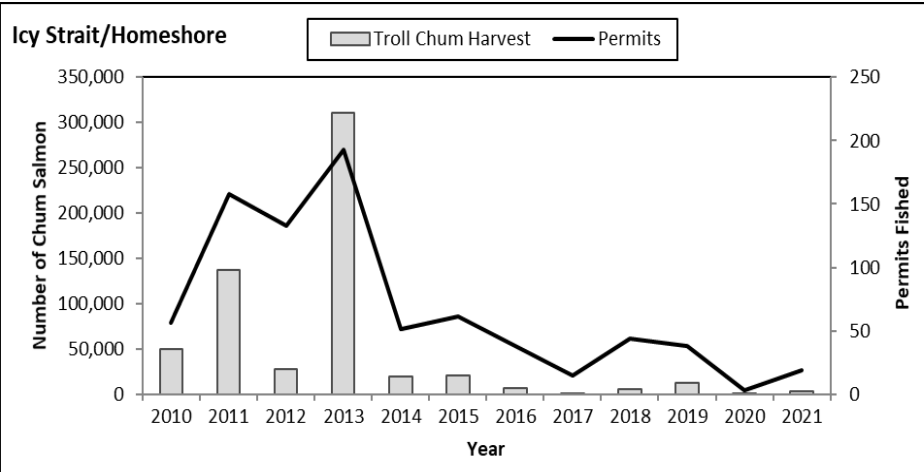
Spring Troll Harvest of Wild SEAK King Salmon Genetic MSA and CWT based estimates



Spring/Summer Hatchery Chum Salmon Troll Areas



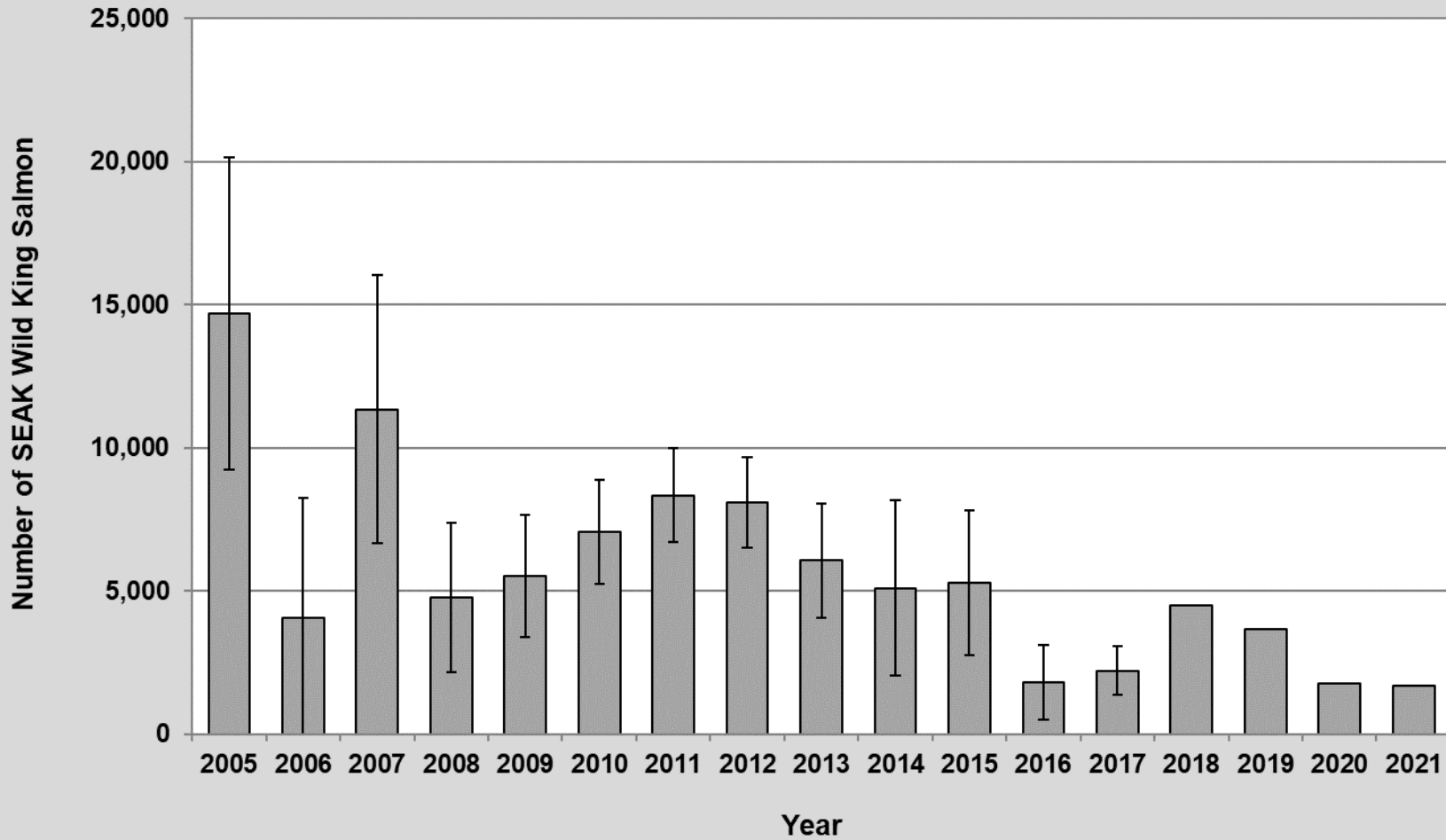
Directed Chum Salmon Troll Fisheries, 2010–2021



Summer Troll Fishery

- Summer fishery begins on July 1, harvest and effort are at peak levels with most waters of the region open to troll gear
- 1st king opening: 70% of the king salmon remaining on the troll allocation after winter and spring fisheries end
- 2nd king opening: remaining 30% of the troll allocation
- Also target coho and chum during summer
- Proposals:
 - 81 allow troll gear to harvest any remaining unharvested portion of all-gear king salmon allowable catch at end of season
 - 89 allow use of additional fishing lines if power troll permits are stacked
 - 91 reallocate harvest proportions between king salmon retention periods
 - 96 expand waters of the Herring Bay THA
 - 114 allow use of fishing rods in conjunction with downriggers by hand troll
 - 116 require retention of terminally injured king salmon all summer
 - 117 allow use of additional fishing lines in areas described in chum salmon troll fishery management plan.

Summer Troll Harvest of Wild SEAK King Salmon Genetic MSA and CWT based estimates

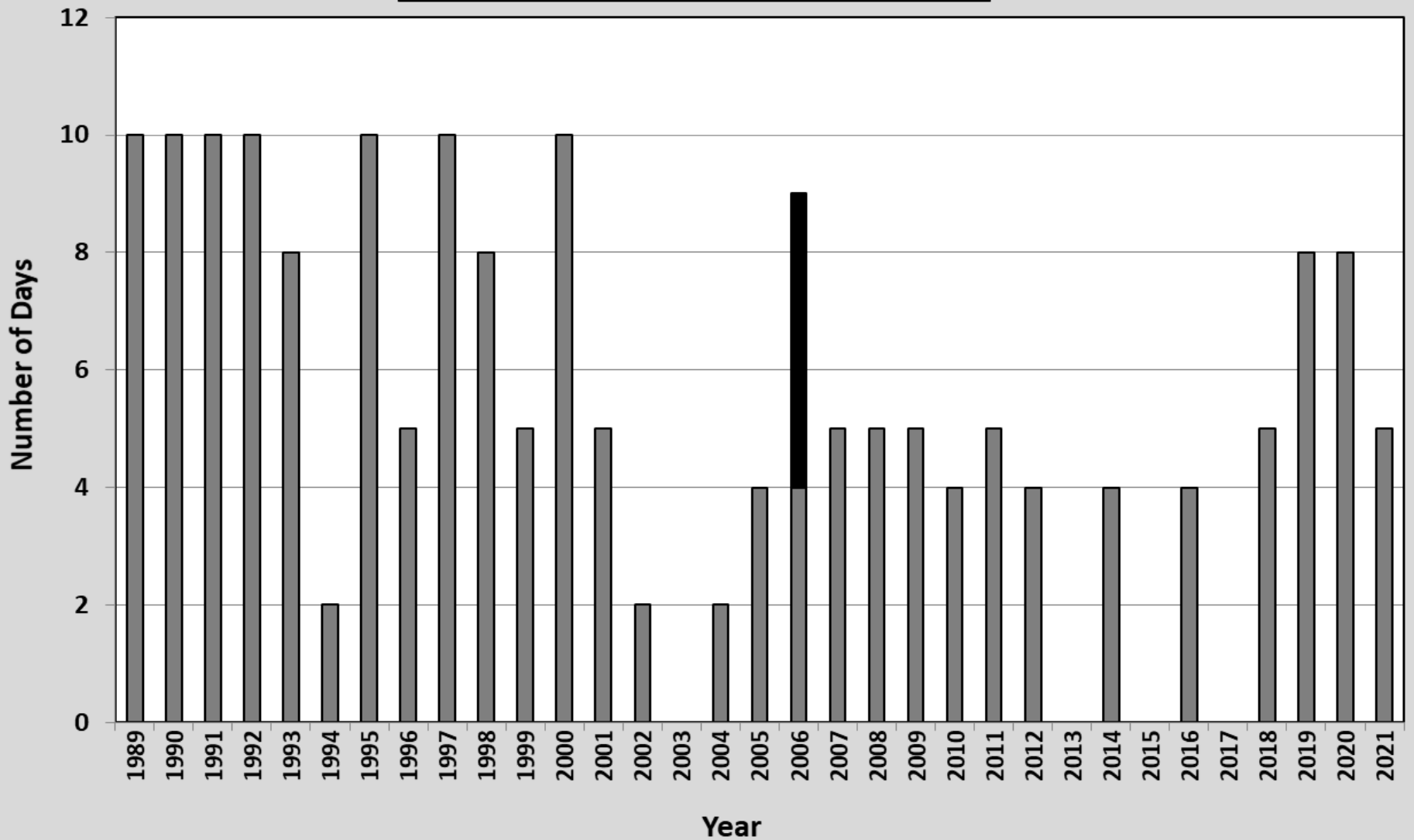


Coho Salmon Fishery

- Troll coho retention begins June 1 and continues until late September
- Coho present in over 2,500 systems
- Fishery managed to ensure escapement goals are met and to achieve board allocation guidelines between gear groups over time
- Area near U.S./Canada border is managed in cooperation with Canada under terms of the Pacific Salmon Treaty
- Run strength assessed in season, conservation closures based on projected wild abundance

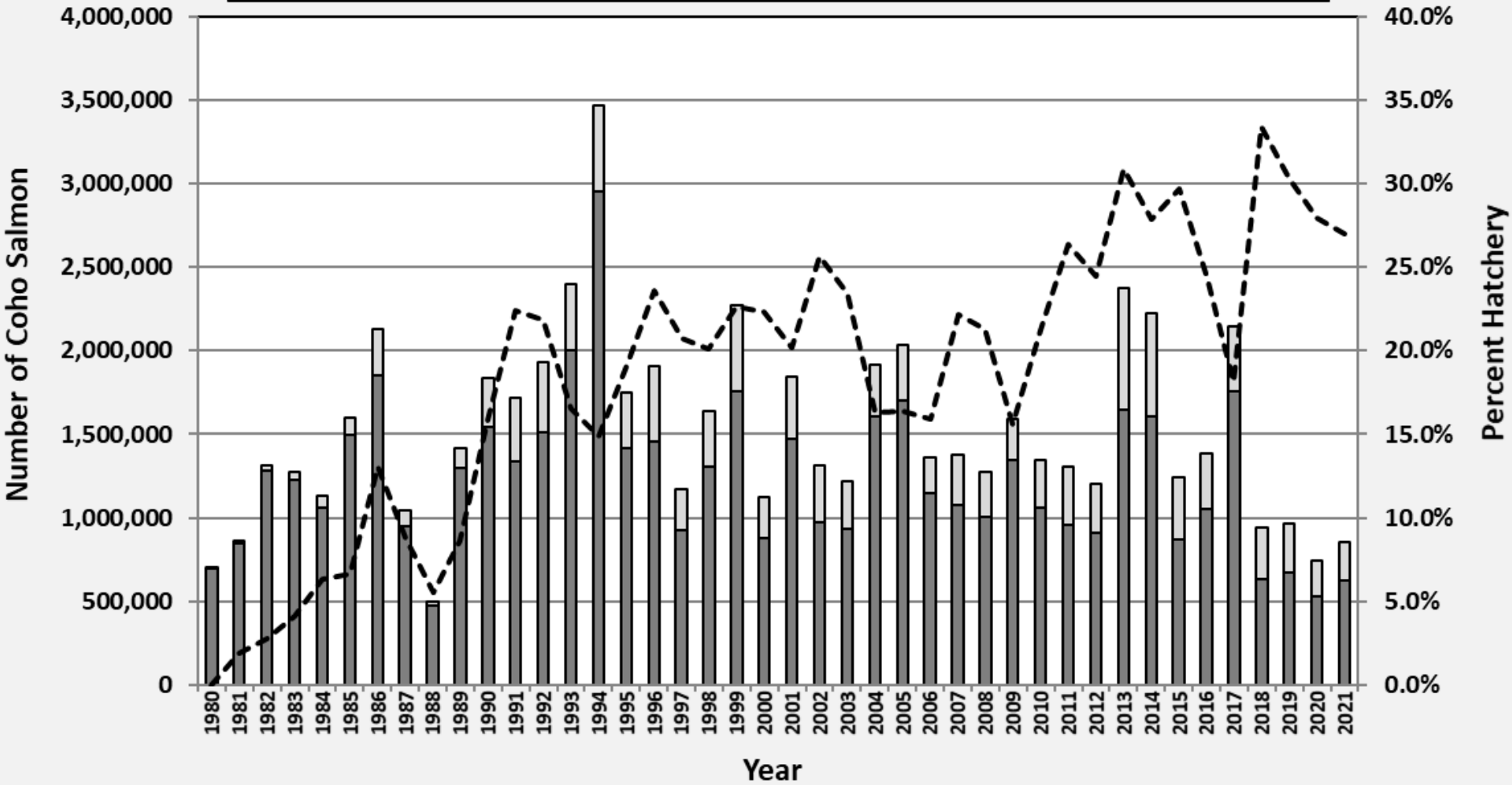
Troll Coho Salmon Closure Days

■ 1st Closure Days ■ 2nd Closure Days



Troll Coho Salmon Harvest, 1980–2021

Wild Contribution
 Hatchery Coho Harvest
 Percent Hatchery



Questions?

