

# The Tutka Bay Lagoon Hatchery

LORRAINE VERCESSI

PRIVATE NONPROFIT HATCHERY PROGRAM COORDINATOR

BOARD OF FISHERIES LOWER COOK INLET MEETING

DECEMBER 2019

SEWARD

RC 3, TAB 6



## Overview of Tutka Bay Lagoon Hatchery (TBLH)

- ▶ Private Nonprofit (PNP) Hatchery Permit
- ▶ TBLH Location
- ▶ TBLH Construction
- ▶ TBLH Operations
- ▶ Permitted Production
  - ▶ Release Sites
  - ▶ Returns
  - ▶ Eggs
  - ▶ Releases

# Private Nonprofit Hatchery Permit

3

- ▶ PNP Hatchery Permit described in Statute and Regulations
  - ▶ Species/Stock
  - ▶ Maximum number of eggs
  - ▶ Release site
- ▶ PNP Hatchery Permit includes a Basic Management Plan
  - ▶ Describes fisheries management
  - ▶ Fish Culture
  - ▶ Facility development
  - ▶ Broodstock development
  - ▶ Production goals and program development
- ▶ Permit Alteration Request (PAR)
  - ▶ Extensive review

# Additional Resources

4

- ▶ Salmon Fishery Enhancement in Alaska:  
[http://www.adfg.alaska.gov/static/regulations/regprocess/fisheriesboard/pdfs/2018-2019/ws/rcs/rc023\\_ADF&G\\_Oral\\_Report\\_Salmon\\_Fishery\\_Enhancement\\_in\\_Alaska.pdf](http://www.adfg.alaska.gov/static/regulations/regprocess/fisheriesboard/pdfs/2018-2019/ws/rcs/rc023_ADF&G_Oral_Report_Salmon_Fishery_Enhancement_in_Alaska.pdf)
- ▶ Alaska Salmon Fisheries Enhancement Annual Report 2018:  
<http://www.adfg.alaska.gov/FedAidPDFs/RIR.5J.2019.01.pdf>
- ▶ The Evaluation of the Tutka Bay Lagoon Salmon Hatchery for Consistency with Statewide Policies and Prescribed Management Practices:  
<http://www.adfg.alaska.gov/FedAidPDFs/RIR.5J.2012.05.pdf>

# TBLH Location

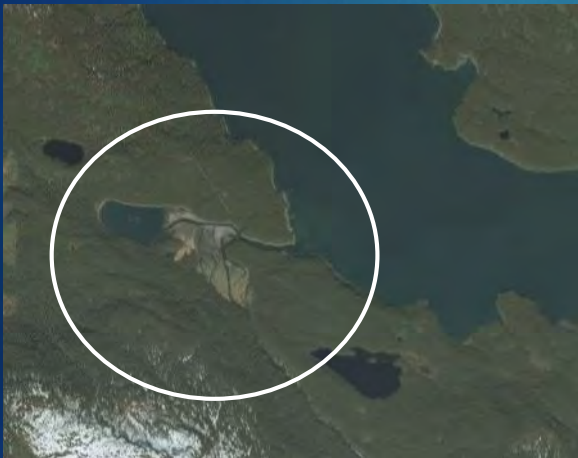
5

- ▶ Lower Kenai Peninsula within Tutka Bay Lagoon, in Kachemak Bay
- ▶ Approximately 15 air miles across Kachemak Bay from Homer.
- ▶ Lower Cook Inlet Management Area



# TBLH Location

6



# Tutka Bay Lagoon Hatchery



7

Photo credit CIAA

# Flight to Tutka Bay Lagoon



8



Onsite  
at TBLH



At Tutka  
Bay  
Lagoon



# TBLH Construction

11

- ▶ 1976: ADF&G Fisheries Rehabilitation, Enhancement, and Development (FRED) Division constructed TBLH
  - ▶ Consistent with the Kachemak Bay State Park (est. 1970)
  - ▶ Consistent with the Kachemak Bay Critical Habitat Area (est. 1974)
- ▶ 1978: ADF&G secured an Interagency Land Management Assignment from the Dept. of Natural Resources.
  - ▶ On designated Mental Health Trust Land
- ▶ 1976 – 1991 Facility expanded under FRED Division

# TBLH ADF&G Operations 1976-1990

12

- ▶ Pink salmon
  - ▶ In 1976, first pink salmon release with a return in 1977
  - ▶ Extensive evaluations of returns began to estimate overall marine survival and fishery contributions.
  - ▶ 1989 estimated contributions
    - ▶ Total return of 961,000 pink salmon
    - ▶ 68% of the Lower Cook Inlet pink salmon commercial harvest
    - ▶ Exvessel value of \$952,000
    - ▶ 20,000 sport catch

(Source: FRED 1989 Annual Report to the Alaska State Legislature)
- ▶ Research and development
- ▶ Chum and sockeye salmon production in low numbers

# State Hatchery Contracts

13

- ▶ In 1988, contract state owned hatchery operations to Private Nonprofit Corporations (PNPs)
- ▶ Change in operator, expanded goals and objectives
  - ▶ FRED Fisheries Rehabilitation and Enhancement through Research and Development
  - ▶ PNP Hatchery Corporation Increased Production to Provide for Fisheries Enhancement and Corporate Escapement
- ▶ Public Private Partnership
- ▶ Cost recovery harvest allowed for Private Nonprofit Corporations

# Cook Inlet Aquaculture Association Private Nonprofit Corporation

14

Board of Directors, representatives of stakeholders in the area

- ▶ Cook Inlet Fishermen's Fund (2)
- ▶ Cook Inlet Seiners Association (2)
- ▶ Inlet Wide Commercial Fishermen Representatives (5)
- ▶ Kenai Peninsula Fisherman's Association (2)
- ▶ North Pacific Fisheries Association (2)
- ▶ Northern District Set Netters of Cook Inlet (2)
- ▶ United Cook Inlet Drifters Association (2)
- ▶ City of Homer (1)
- ▶ City of Kachemak (1)
- ▶ City of Seward (1)
- ▶ Cook Inlet Region, Inc. (1)
- ▶ Kenai Peninsula Borough (1)
- ▶ Matanuska Susitna Borough (1)
- ▶ Municipality of Anchorage (1)
- ▶ Processor Representative (3)
- ▶ Port Graham/Nanwalek Representative (1)

# TBLH CIAA Operations

15

- ▶ In 1991, ADF&G contracted operation of TBLH to CIAA
- ▶ In 1994, ADF&G issued Private Nonprofit Hatchery Permit #32
  - ▶ Pink and chum salmon (sockeye salmon added 1994)
- ▶ Facility expansion and improvements continued under CIAA
- ▶ State provided a Capital Improvement Project allocation in 2012 for essential deferred maintenance, repairs and improvements.
- ▶ CIAA currently operates TBLH



16



Video Credit John Newton



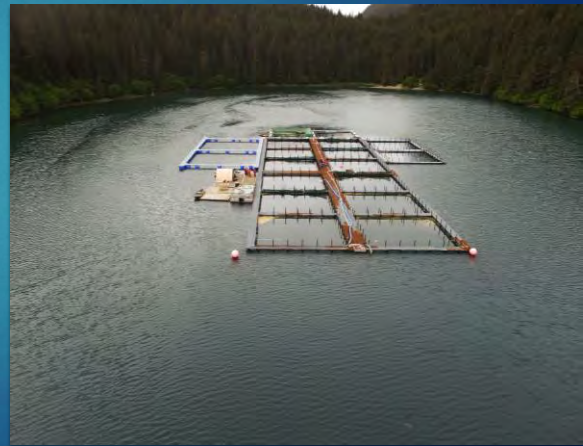
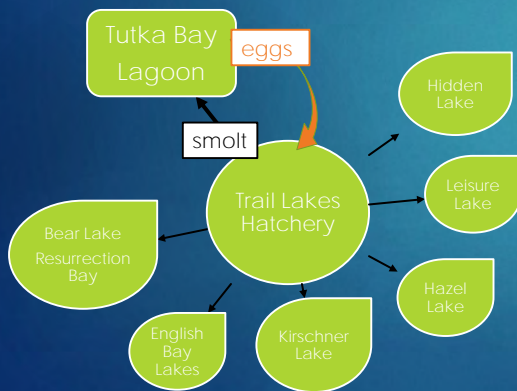
# Currently Permitted CIAA TBLH Release Sites

- ▶ Pink salmon
  - ▶ Tutka Bay or Tutka Bay Lagoon (1994)
  - ▶ Halibut Cove Lagoon (1994) moved to Halibut Cove (2012)
  - ▶ Port Graham (2012)
  - ▶ Paint River (Fish ladder completed 1991, opened 2011, release 2015)



# Currently Permitted CIAA TBLH Release Sites

- ▶ Sockeye salmon
  - ▶ Tutka Bay Lagoon (1994)



# Terminal Harvest Areas

- ▶ Release sites are terminal harvest areas (THAs)
- ▶ A THA is where common property harvest occurs, contributing to Common Property Fisheries
  - ▶ Sport
  - ▶ Personal Use
  - ▶ Commercial
  - ▶ Subsistence
- ▶ Special Harvest Area (SHA)
  - ▶ A terminal harvest area where hatchery operators may conduct cost recovery harvest and where common property fisheries may occur.



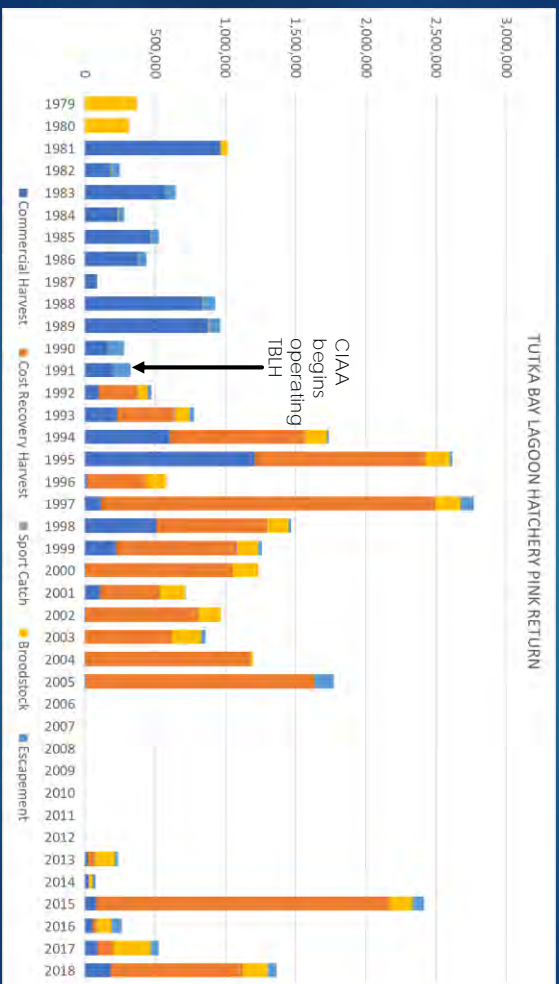
# Current CIAA Special Harvest Areas

- ▶ TBLH pink salmon SHAs
  - ▶ Tutka Bay/Tutka Bay Lagoon
  - ▶ Halibut Cove
  - ▶ Paint River
- ▶ Trail Lakes Hatchery sockeye salmon SHAs
  - ▶ Kirschner Lake
  - ▶ China Poot
  - ▶ Tutka Bay/Tutka Bay Lagoon
  - ▶ Resurrection Bay/Bear Lake
  - ▶ English Bay Lakes
- ▶ Port Graham Hatchery pink salmon SHA
  - ▶ Port Graham
- ▶ Eklutna (not currently operating)



# TBLH Pink Salmon Returns

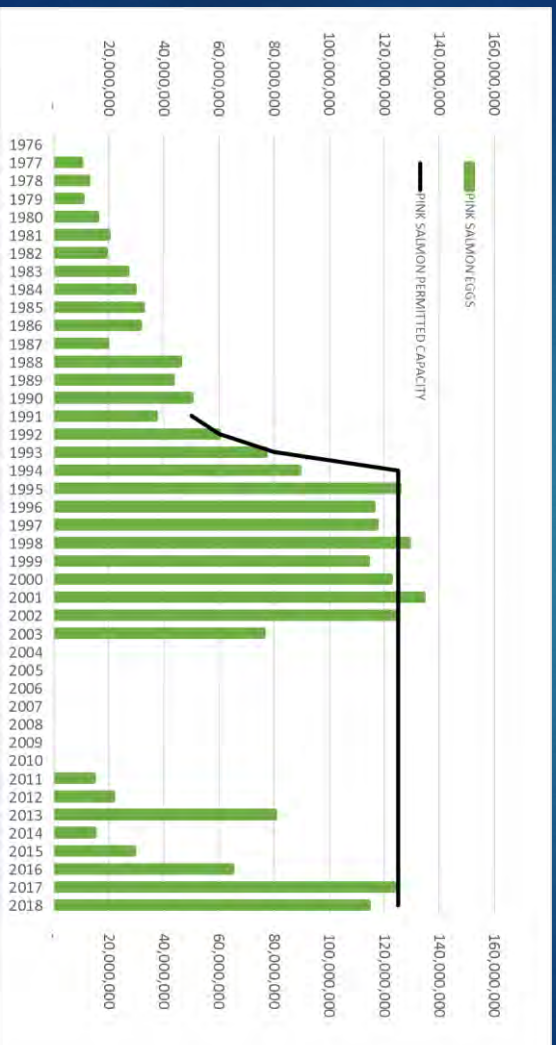
21



Sources: 1979-1990 ADF&G FRED Annual Reports to the Legislature; 1991-2018 TBLH Annual Reports

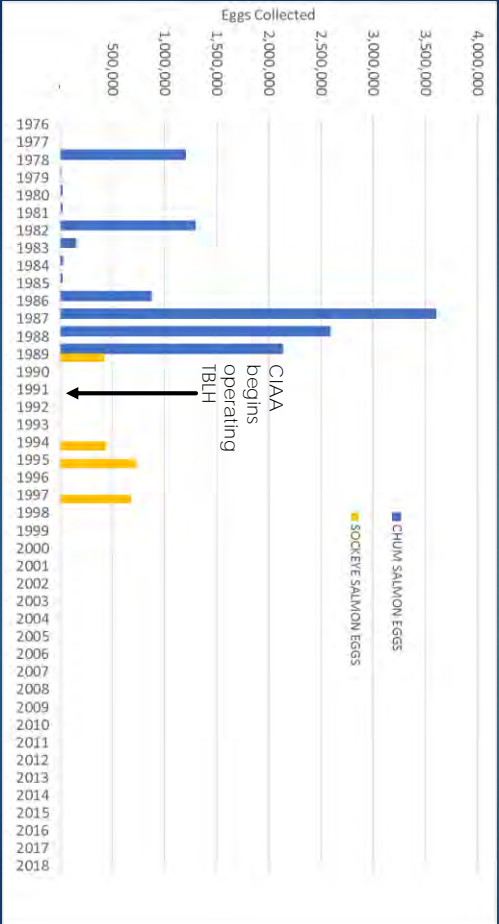
# TBLH Pink Salmon Eggs

22



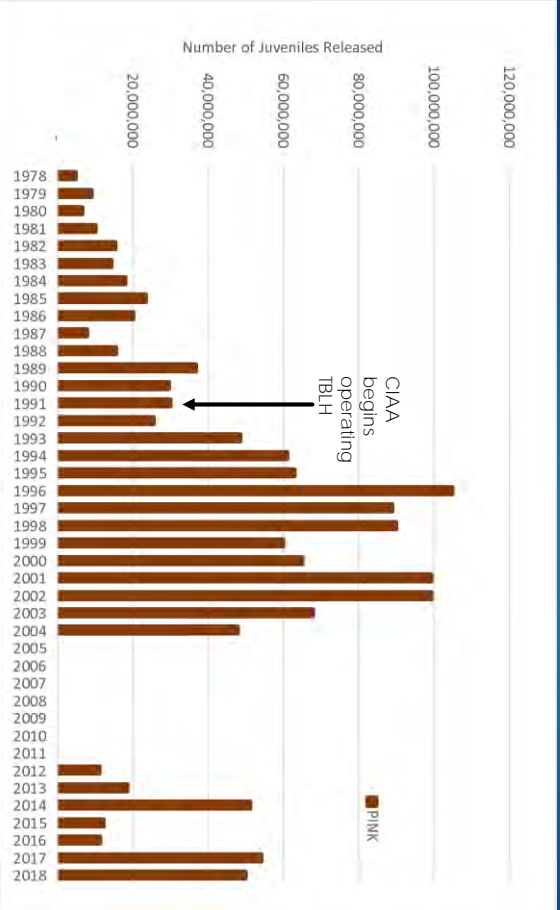
Sources: 1976-1990 ADF&G FRED Annual Reports to the Legislature; 1991-2018 TBLH Annual Reports

# TBLH Chum and Sockeye Salmon Eggs



Sources: 1976-1990 ADP & G, FRED Annual Reports to the Legislature; 1991-2018 TBLH Annual Reports

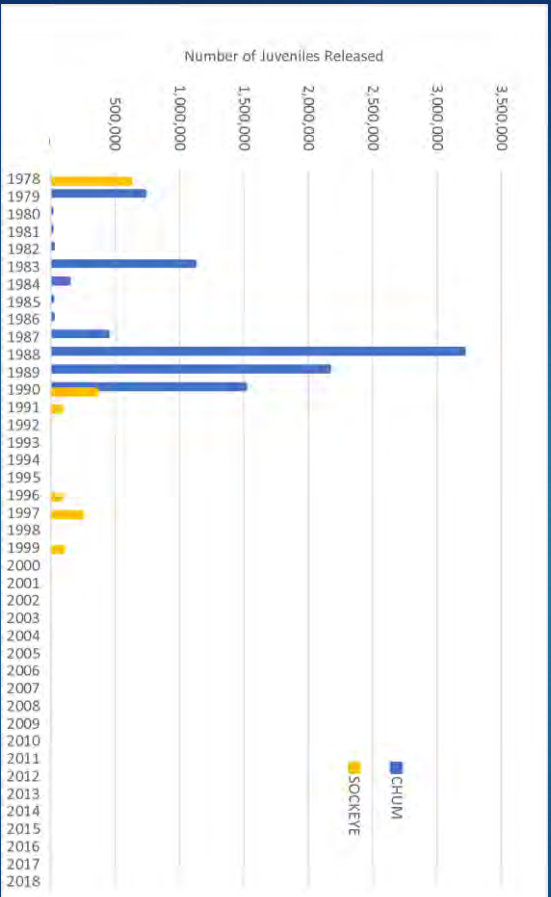
# TBLH Production: Releases



Sources: 1978-1990 ADP & G, FRED Annual Reports to the Legislature; 1991-2018 TBLH Annual Reports

# TBLH Production: Releases

25



Sources: 1978-1990 ADF&G FRED Annual Reports to the Legislature; 1991-2018 TBLH Annual Reports

# Questions?

26

