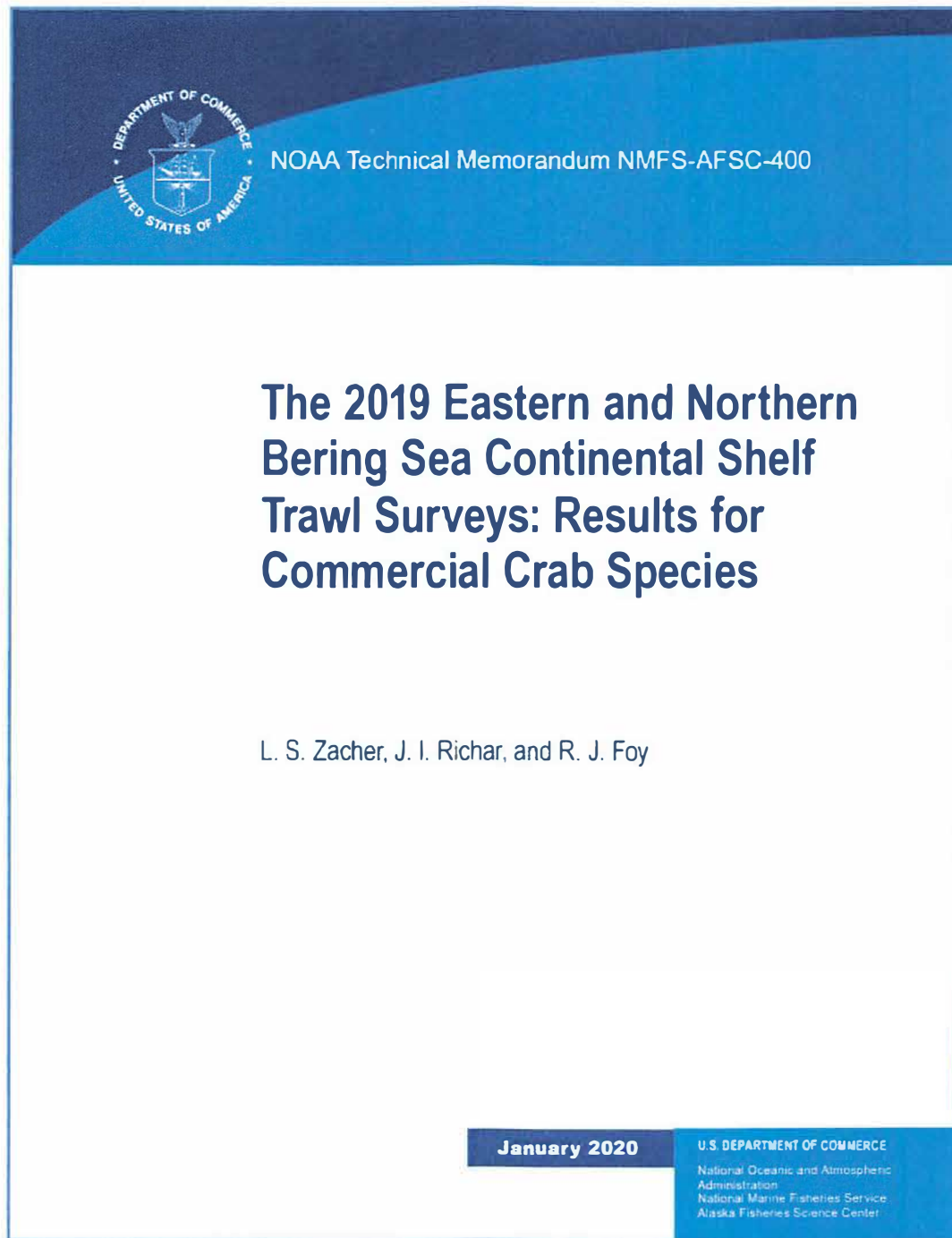


Recruitment Information for Tanner Crab – most recent size composition plots from the NMFS survey, reflecting some signal of positive recruitment in the Western Bairdi District.

Front cover and selected pages below – full report available at;

<https://repository.library.noaa.gov/view/noaa/22919>



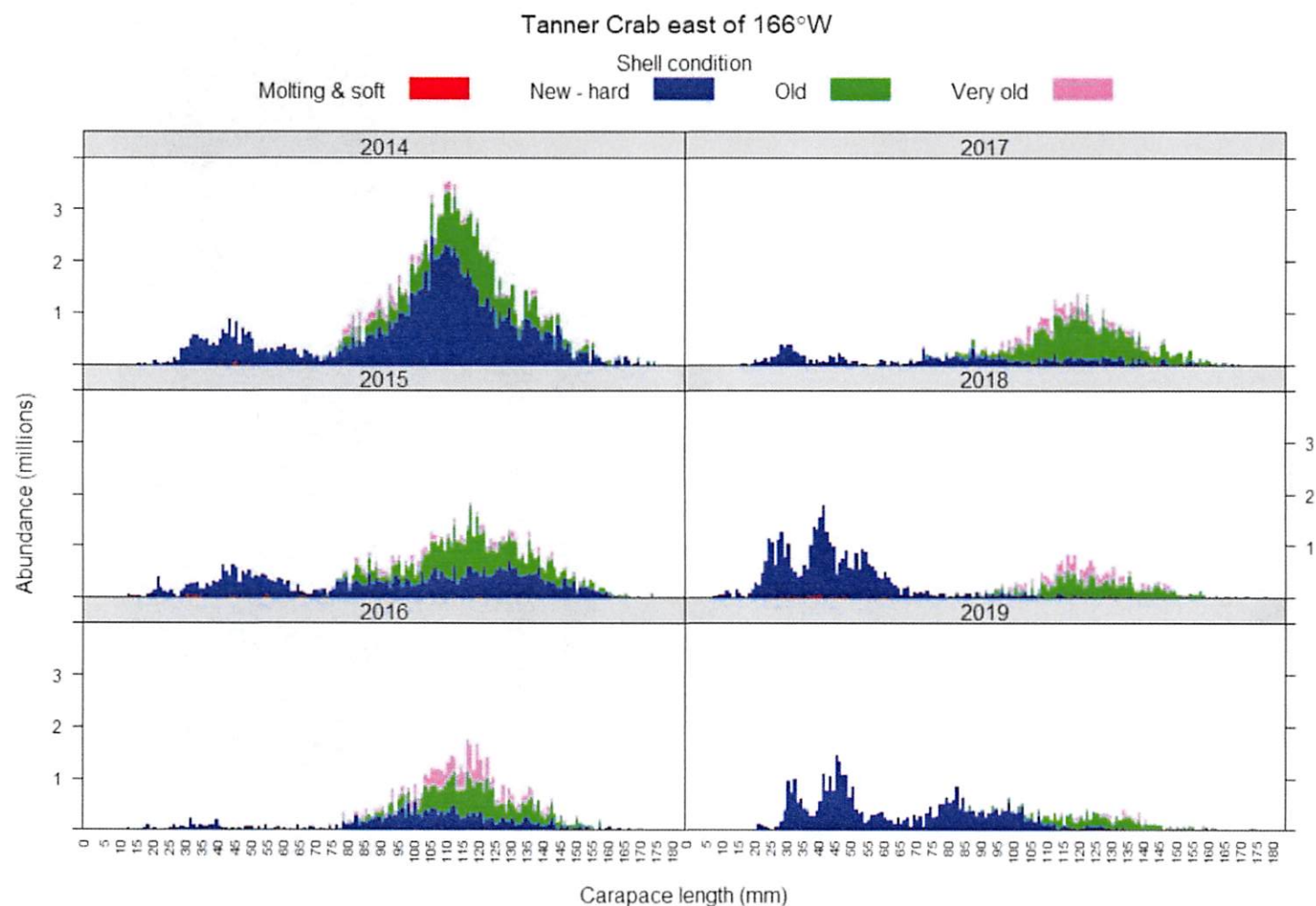


Figure 58. -- Abundance (millions) by size and shell condition of male Tanner crab (*Chionoecetes bairdi*) east of 166° W using 1 mm width classes of all districts combined, 2014-2019.

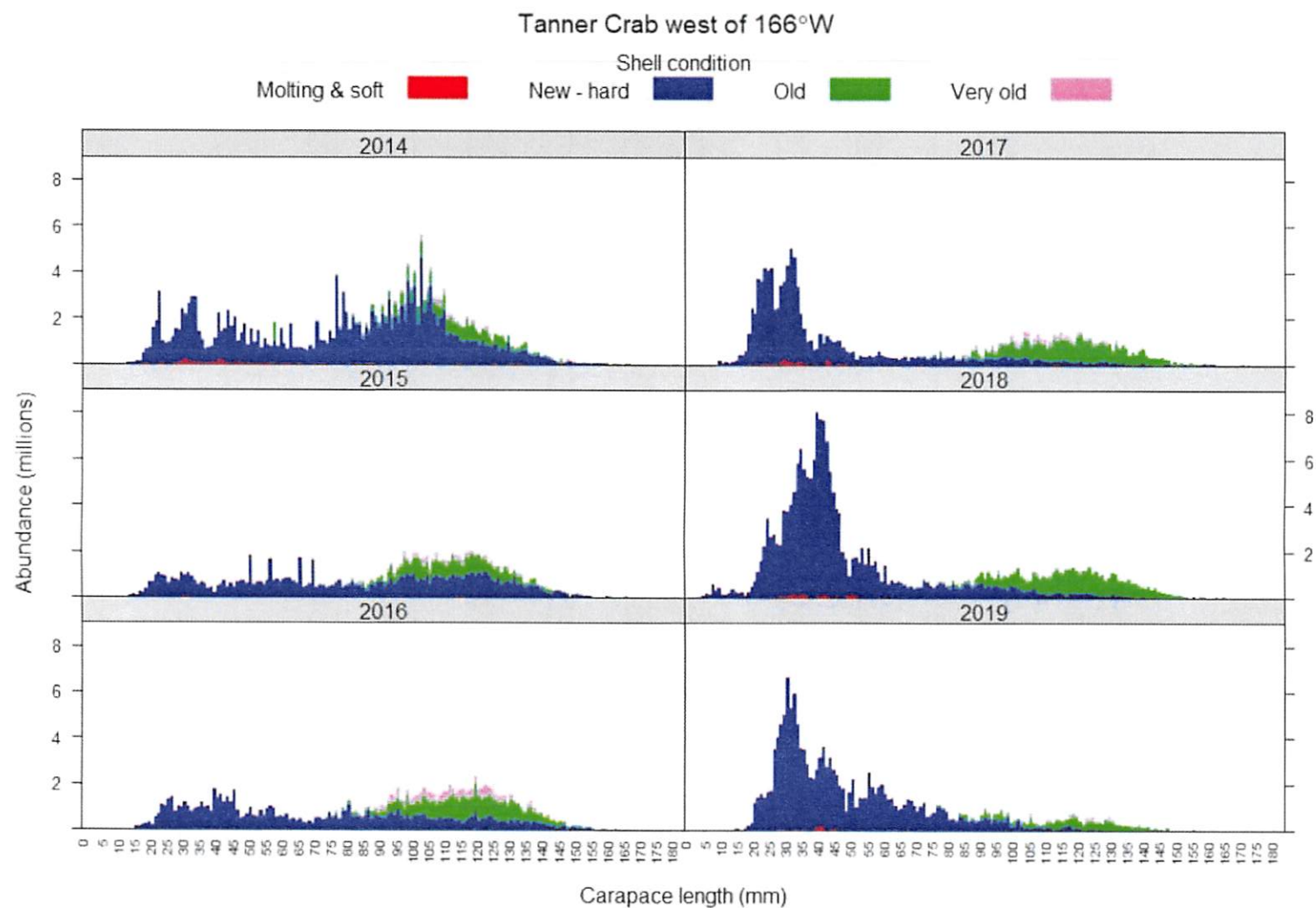


Figure 59. -- Abundance (millions) by size and shell condition of male Tanner crab (*Chionoecetes bairdi*) west of 166° W using 1 mm width classes of all districts combined, 2014-2019.

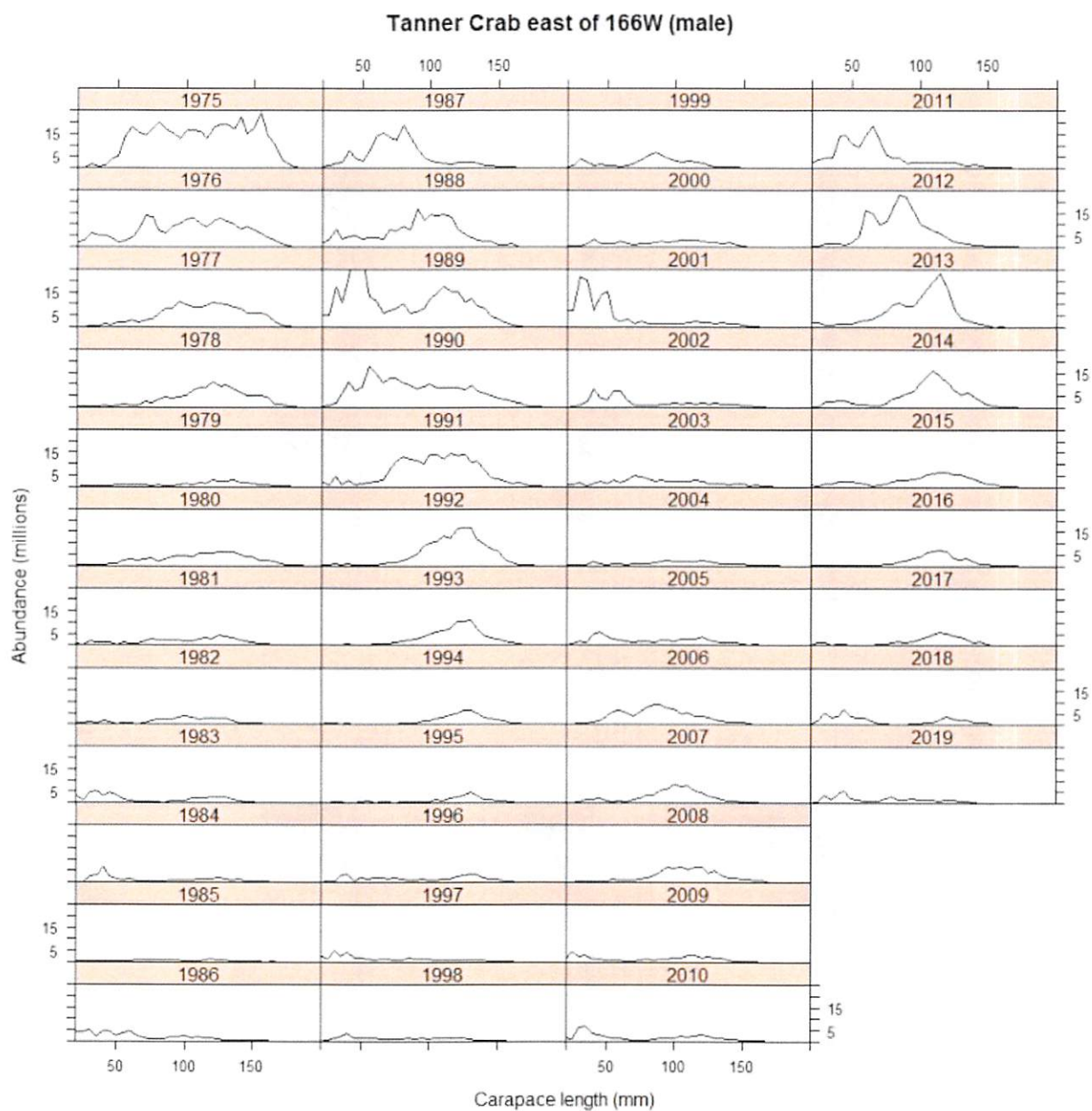


Figure 66. -- Historical size frequency by 5 mm width classes of male Tanner crab (*Chionoecetes bairdi*) east of 166° W, 1975 to 2019.

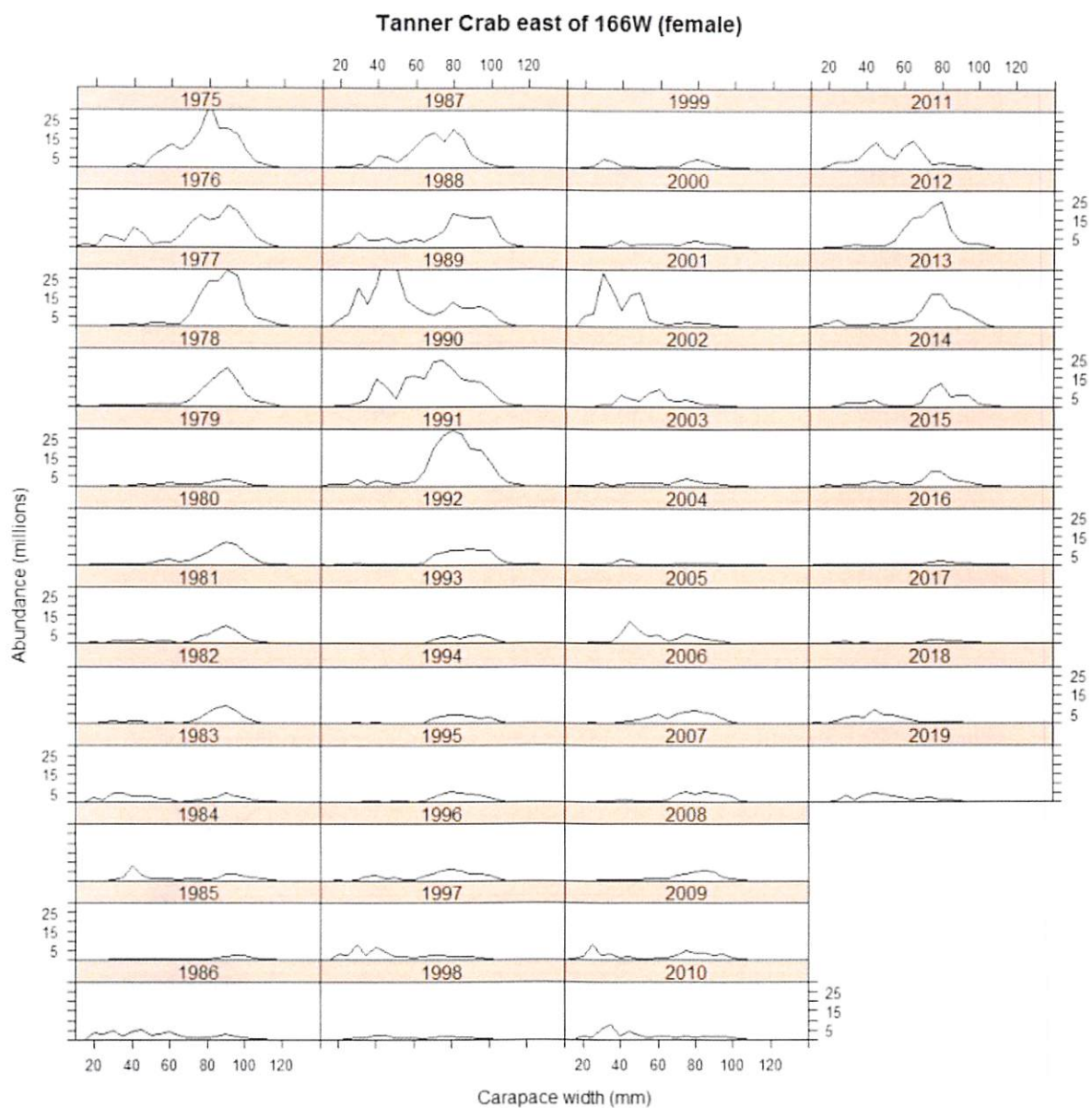


Figure 67. -- Historical size frequency by 5 mm width classes of female Tanner crab (*Chionoecetes bairdi*) east of 166° W, 1975 to 2019.



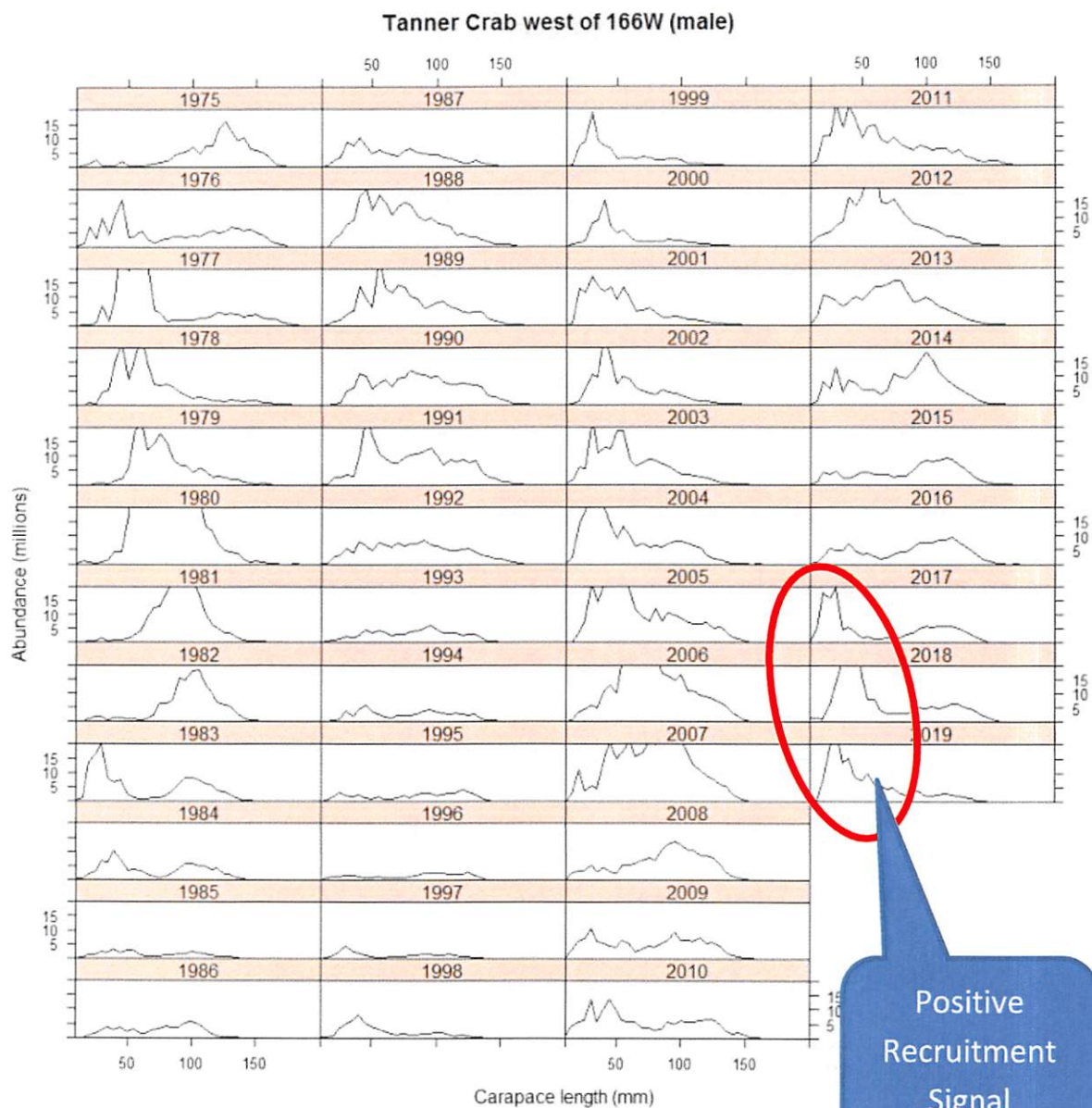


Figure 68. -- Historical size frequency by 5 mm width classes of male Tanner crab west of 166° W, 1975 to 2019.

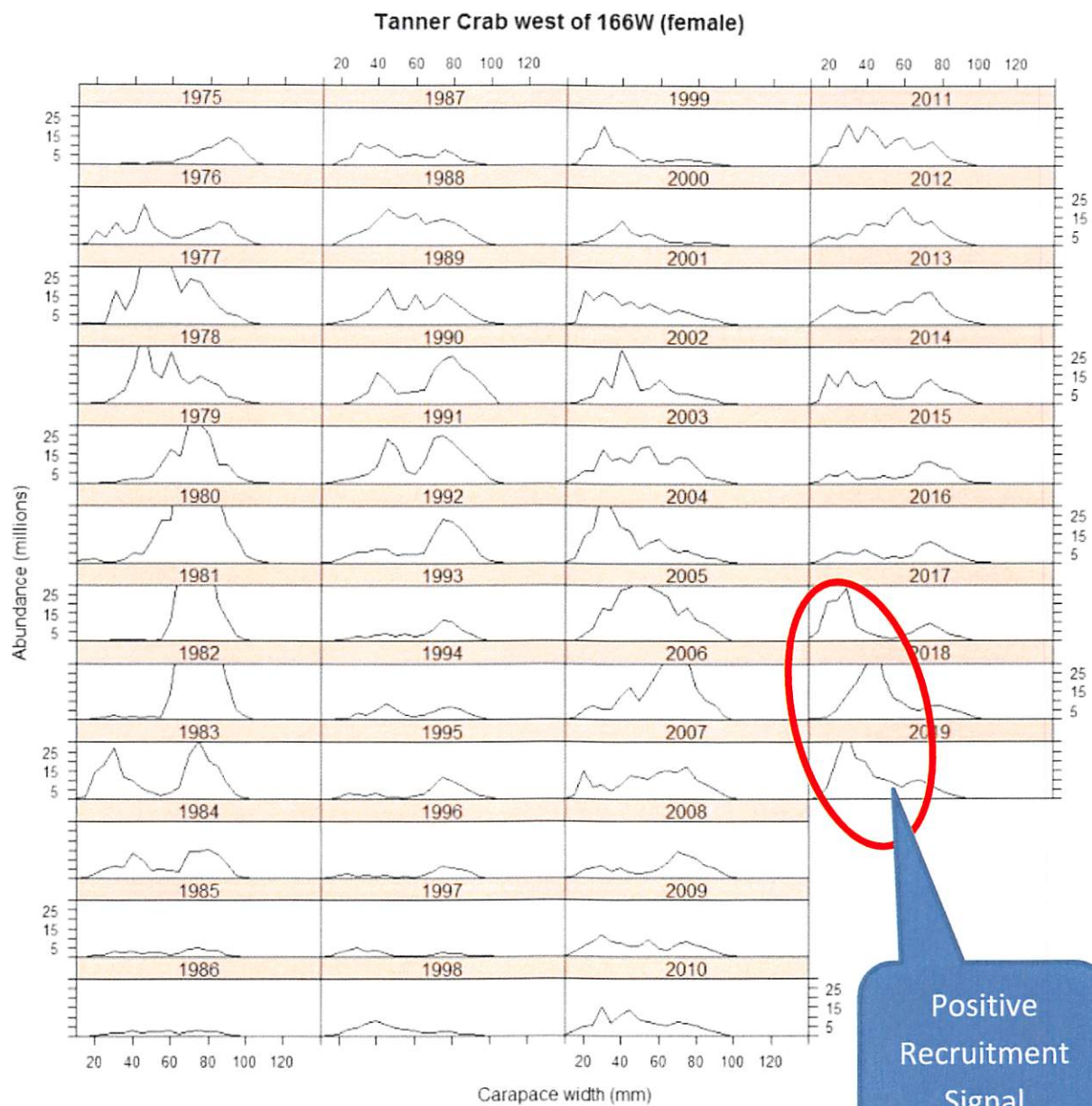


Figure 69. -- Historical size frequency by 5 mm width classes of female Tanner crab (*Chionoecetes bairdi*) west of 166° W, 1975 to 2019.