

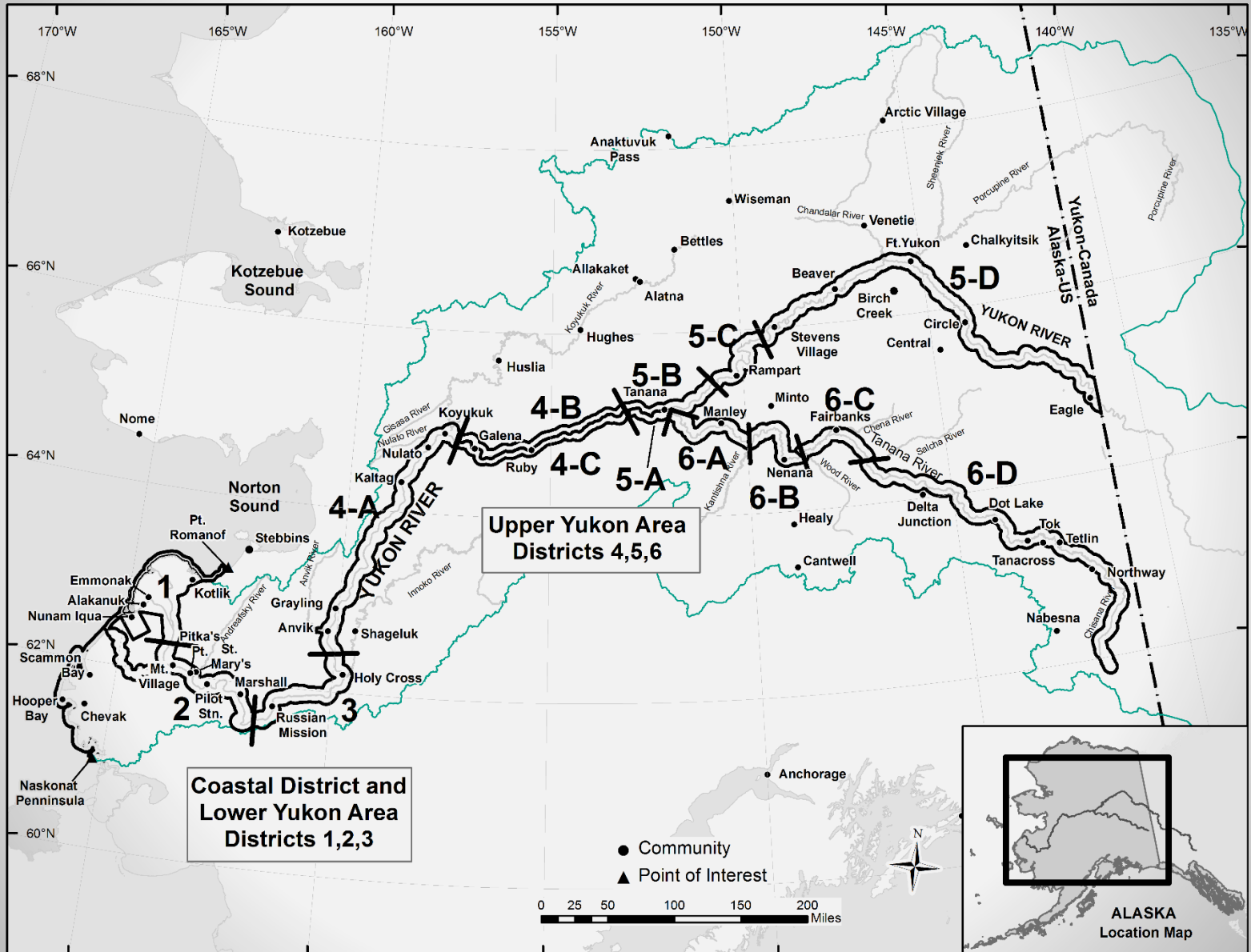
Yukon River Fall Chum Stock Status and Fisheries Overview



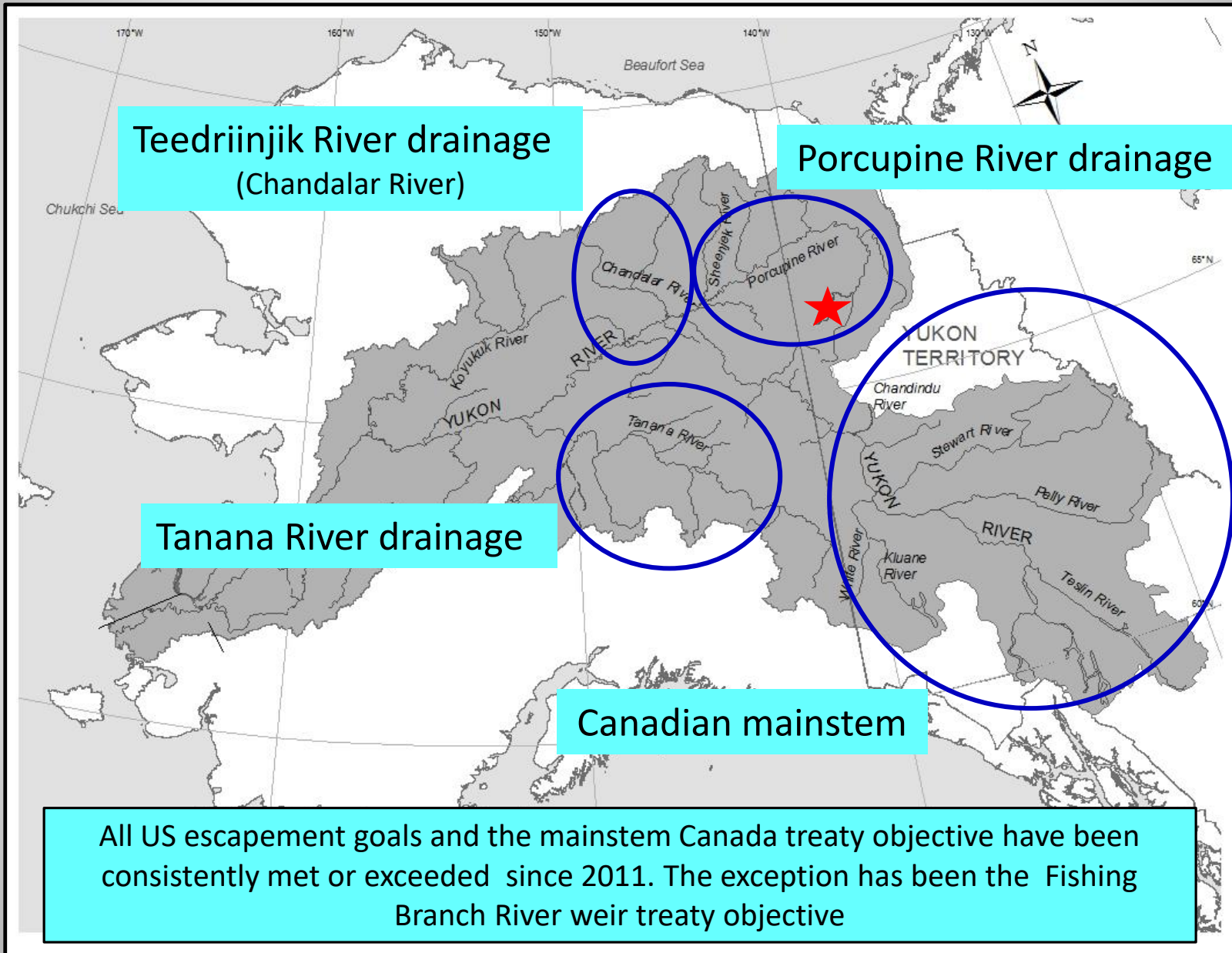
AYK Board of Fisheries Meeting
January 2019
Anchorage, Alaska

Presentation By: Jeff Estensen, ADF&G
Oral Report – RC 3, Tab 12

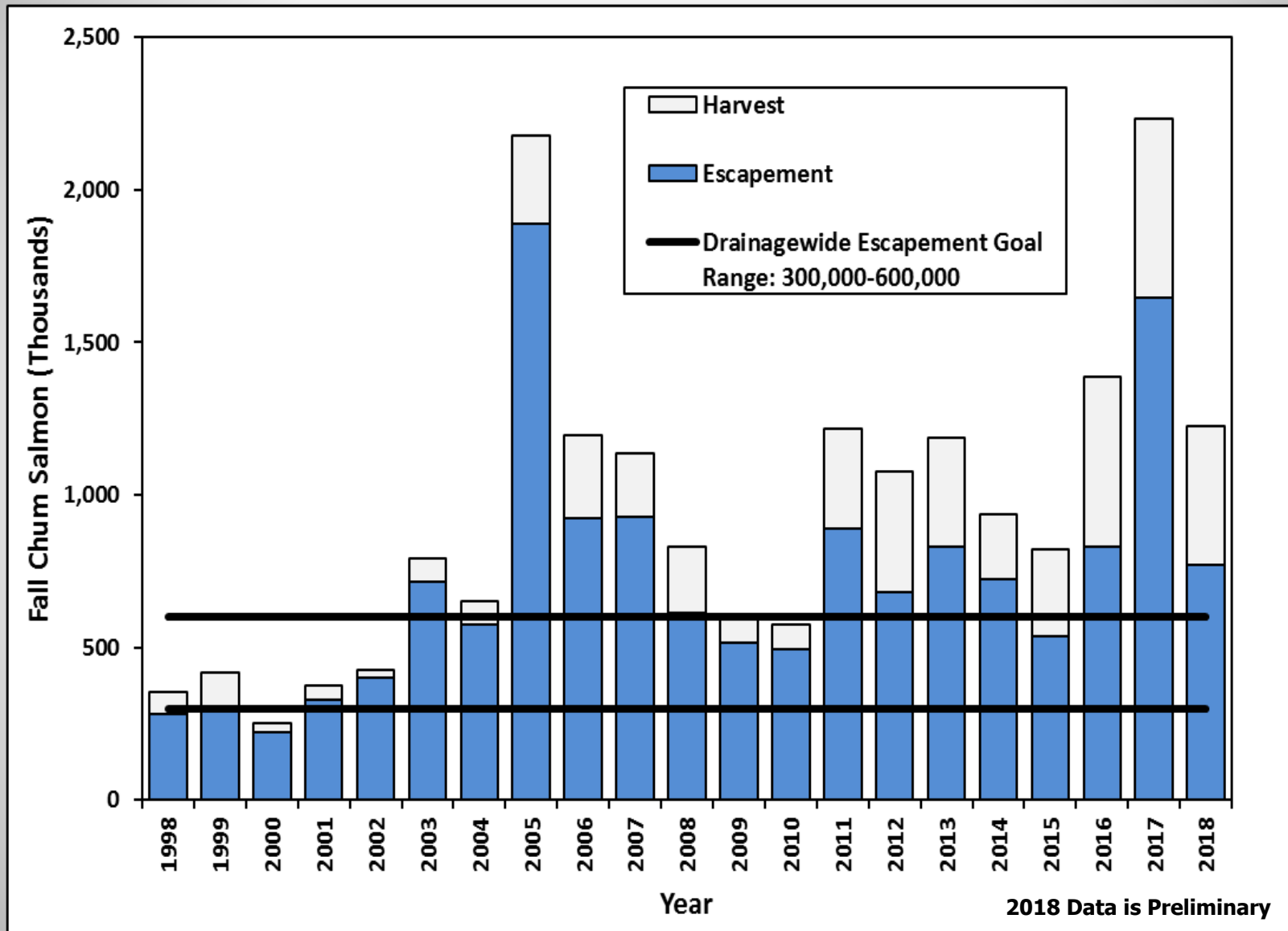
Yukon Management Area



Fall Chum Spawning Locations



Fall Chum Salmon Stock Status



2013-2017 average
estimated harvest = 92,400

Upper River
Avg. 59,300 fish

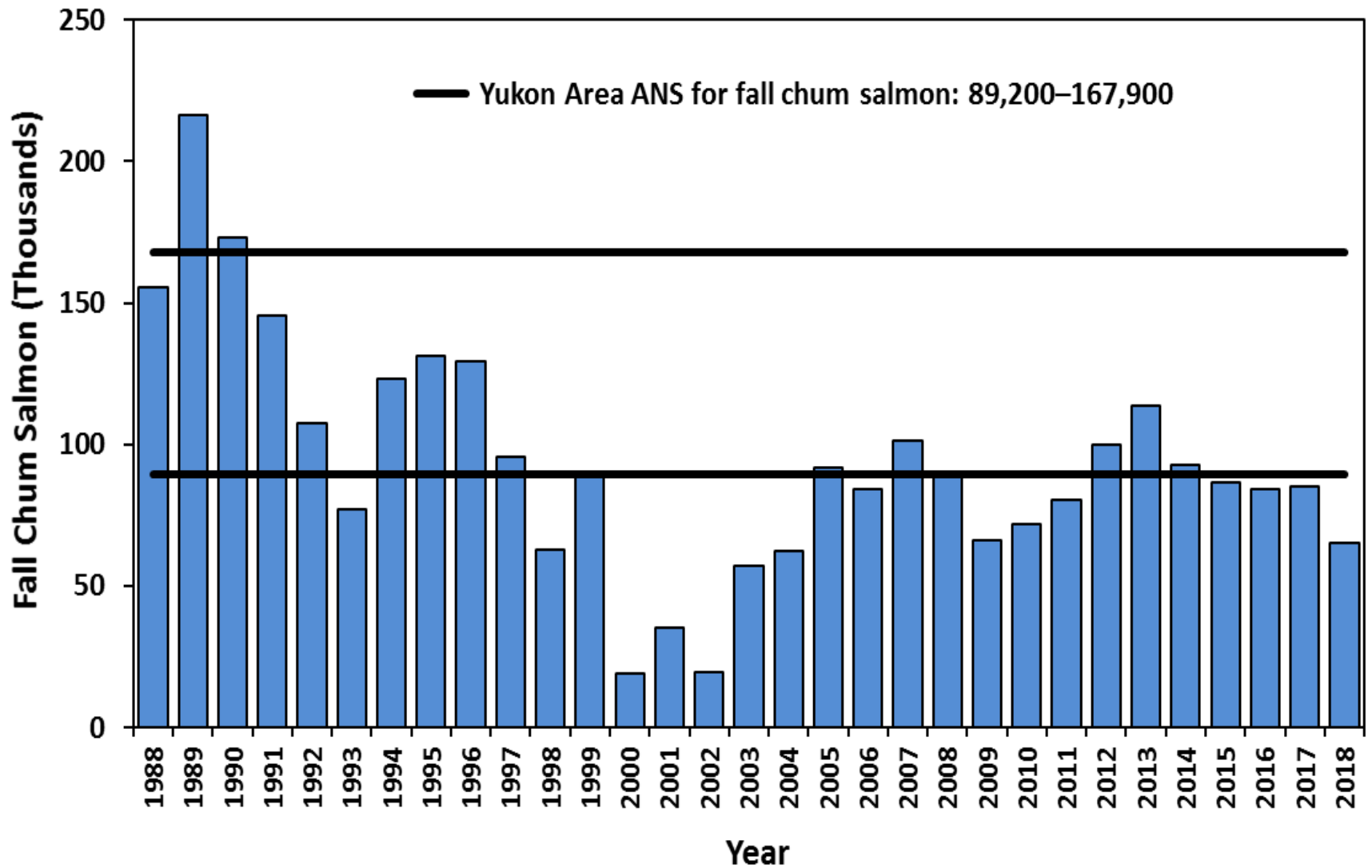
Middle River
Avg. 12,800 fish

Tanana River
Avg. 8,700 fish

Lower River
Avg. 11,260 fish



Fall Chum Subsistence Salmon Harvests



2018 Data is Preliminary

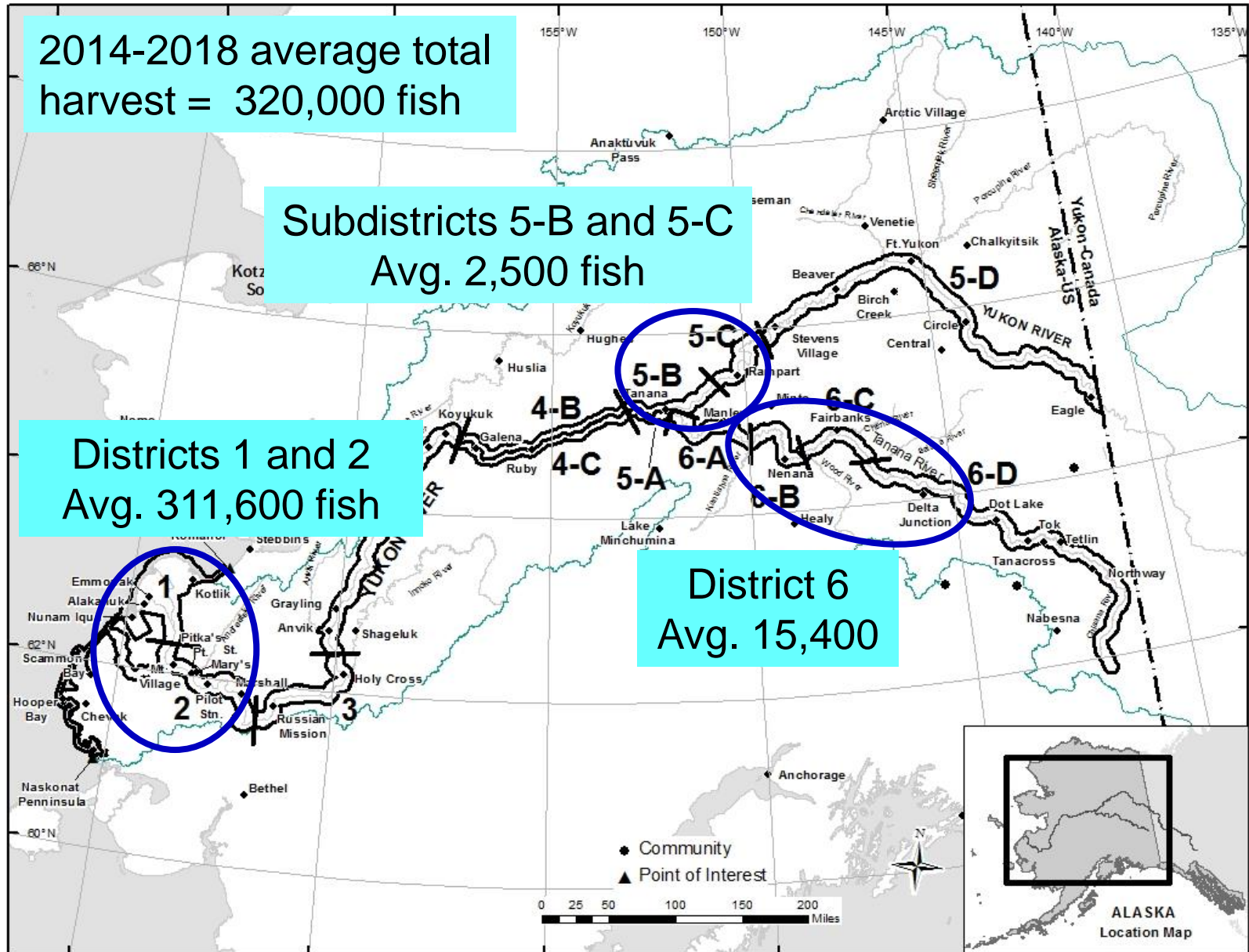
Fall Chum Salmon Commercial Harvest

2014-2018 average total
harvest = 320,000 fish

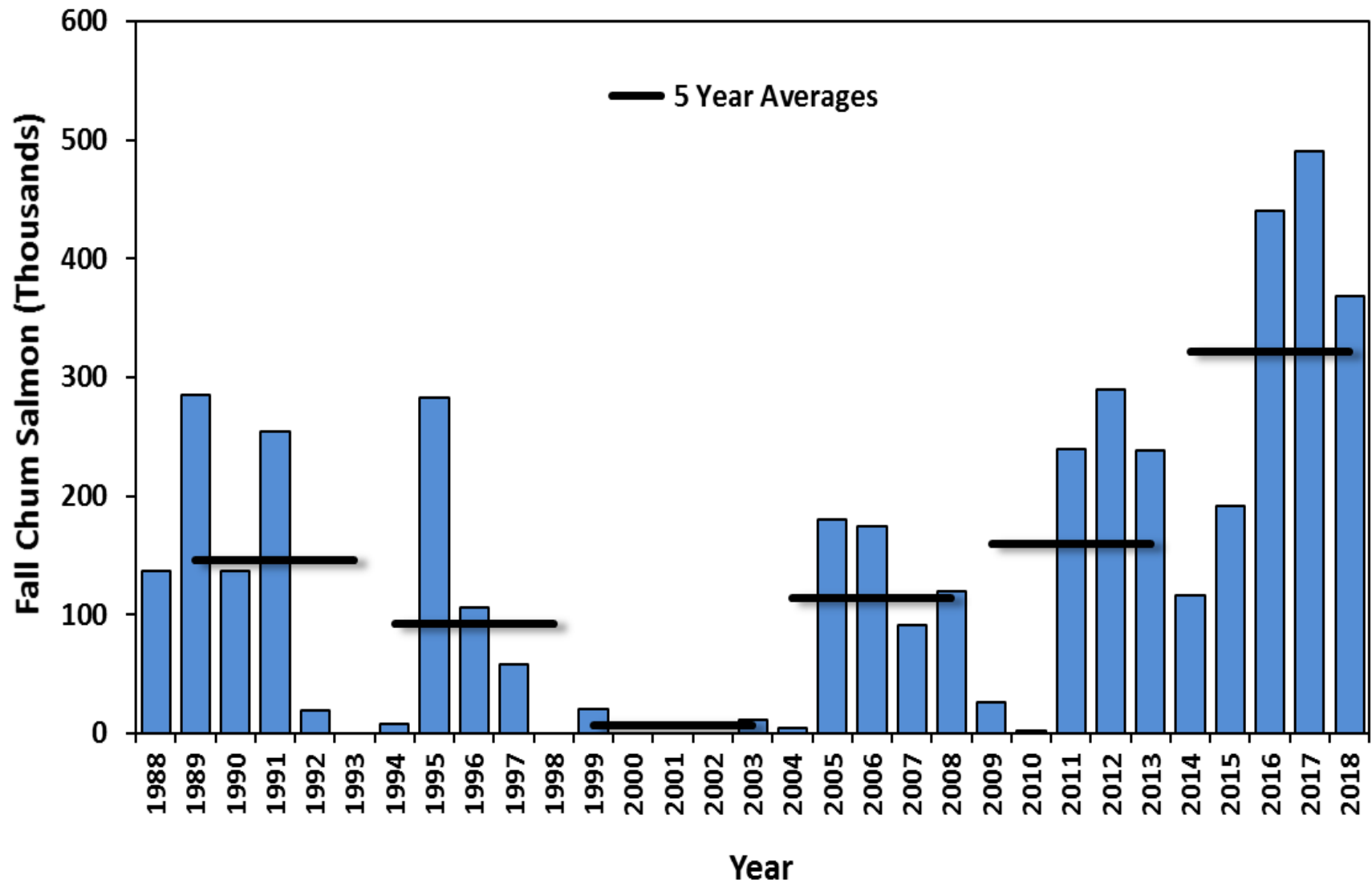
Subdistricts 5-B and 5-C
Avg. 2,500 fish

Districts 1 and 2
Avg. 311,600 fish

District 6
Avg. 15,400

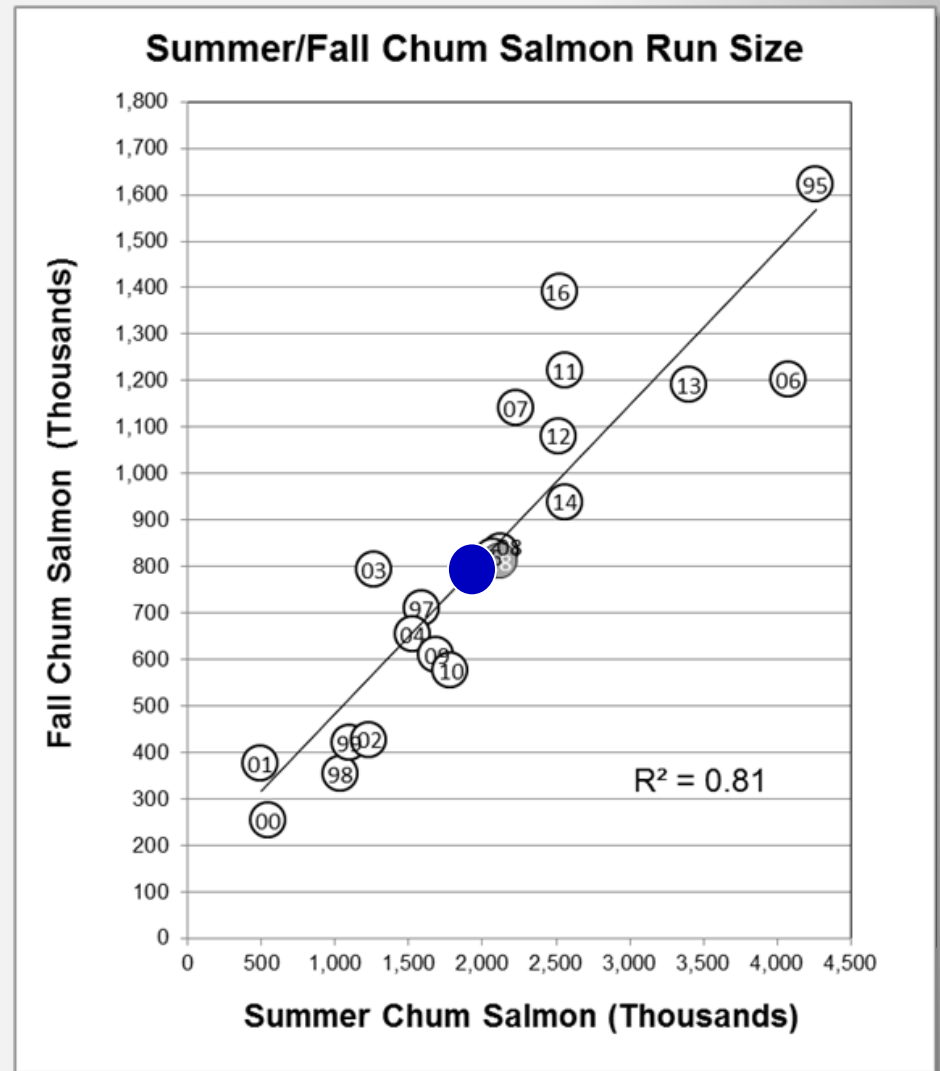


Fall Chum Salmon Commercial Harvests

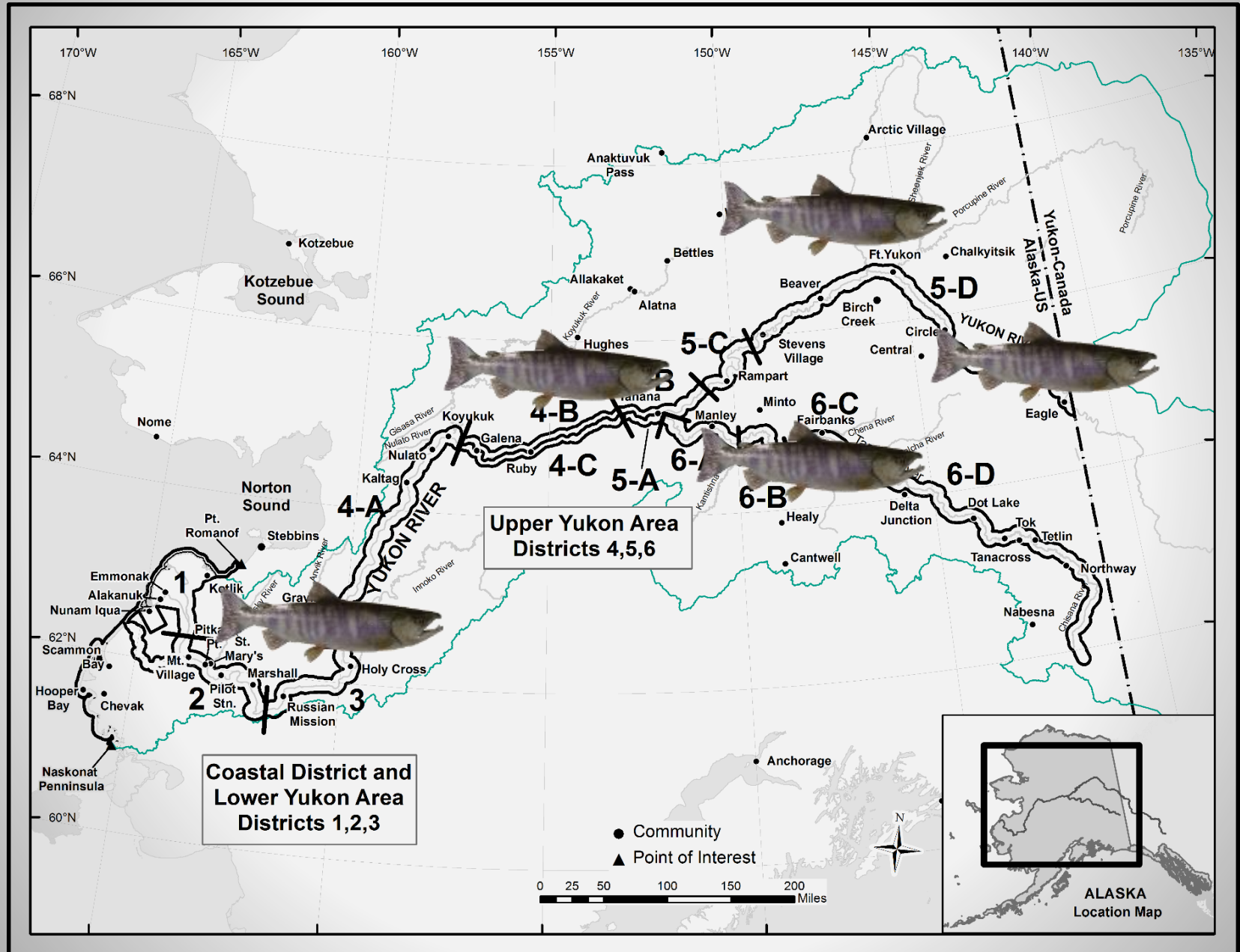


Fall Chum Salmon Outlook

- Preseason
 - Forecast derived using Ricker modelling
- Initial management
 - Preseason projection based on summer/fall chum salmon relationship
- Inseason management
 - Assessment projects



Fall Chum Salmon Migration Timing



Subsistence Fisheries Management

- District/subdistricts switch to fall season management commensurate with fall chum salmon migration
- Regulatory schedules with use of up to 7.5" mesh gear
- Since 2012 subsistence fishing liberalized to 7 days per week later in season
- Fishing restrictions in the Porcupine River since 2015



Photo by Jeff Estensen



Photo by Jeff Estensen

Commercial Fisheries Management

- Commercial surpluses have been available since 2011
- Two period/week schedule in Lower River upon switching to fall management
- Fishing time adjusted as run strength warrants
- Commercial openings also occur in Subdistricts 5B-C and District 6

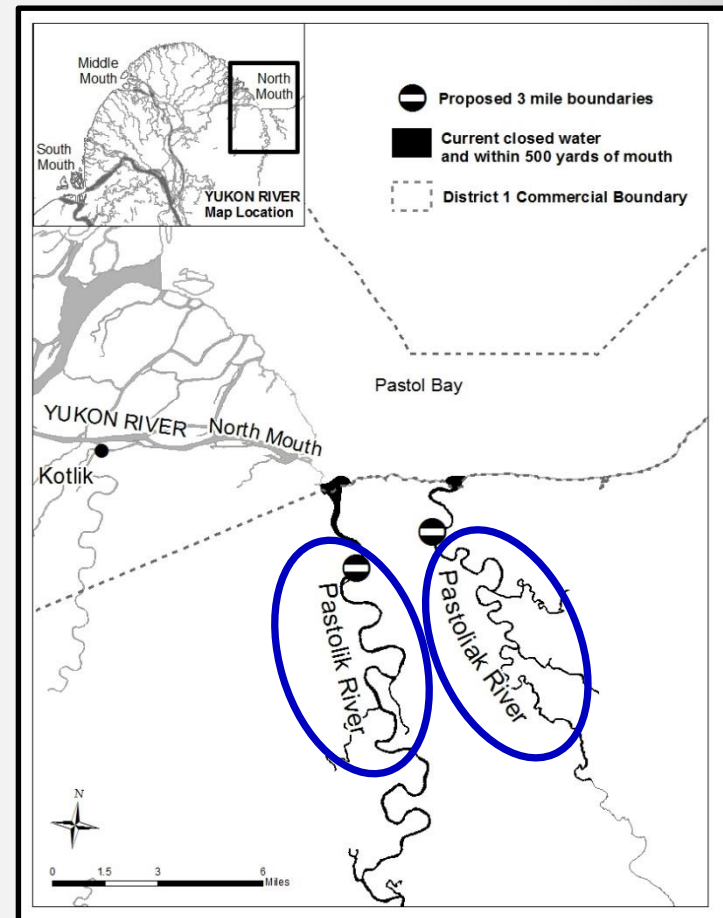
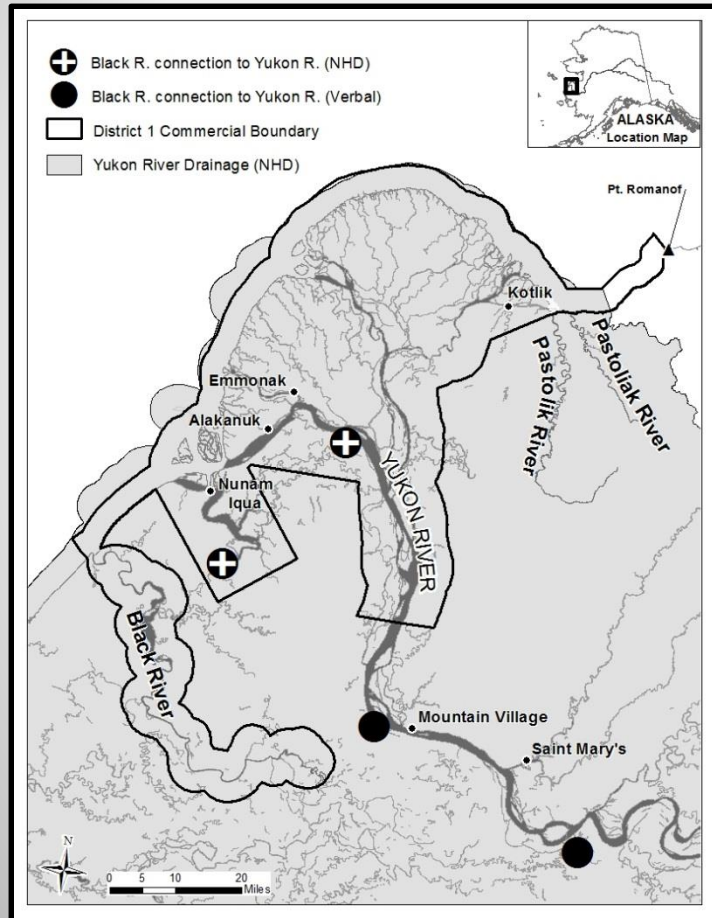


2019 Yukon Area Proposals Before the Board

- **Proposal 95**: In Subdistrict 5-C between Hess Creek and the subdistrict border, increase minimum distances between subsistence gillnet gear and limit aggregate gillnet length to 350 ft. per eddy.
- **Proposal 96**: In District 5, allow subsistence fishing for fall chum salmon 7 days per week once the fall directed commercial fishery is opened in other districts
- **Proposal 101**: Replace set closure dates for fall season commercial fisheries in Districts 1-5 with closures specified by emergency order

2019 Yukon Area Proposals Before the Board

- **Proposals 102-104**: Allow commercial salmon fishing in the Pastolik and Pastoliak rivers



2019 Yukon Area Proposals Before the Board

- **Proposal 178**: Allow chum salmon to be taken by drift gillnets after August 2 in Subdistrict 4-A downriver from the mouth of Stink Creek

Acknowledgements



U.S. Fish & Wildlife Service

Yukon Delta Fisheries
Development Association



Yukon River Drainage
Fisheries Association

Asa'carsarmiut Tribal Council

