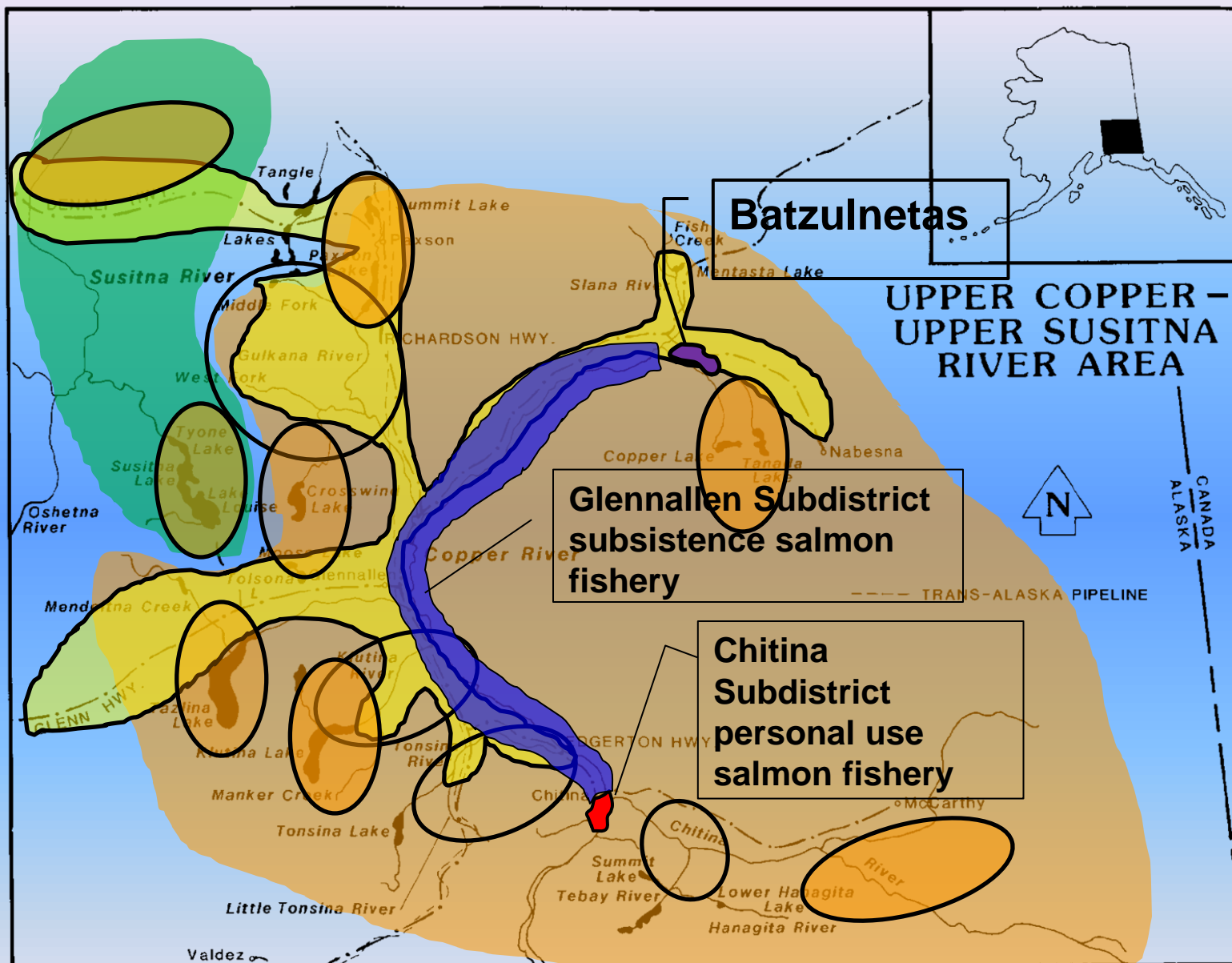


# Participation, harvest, and catch in Upper Copper River sport, personal use, and subsistence fisheries.

Mark A. Somerville  
Division of Sport Fish  
Upper Copper/Upper Susitna Management  
Area  
RC 3; Oral reports Tab 7









































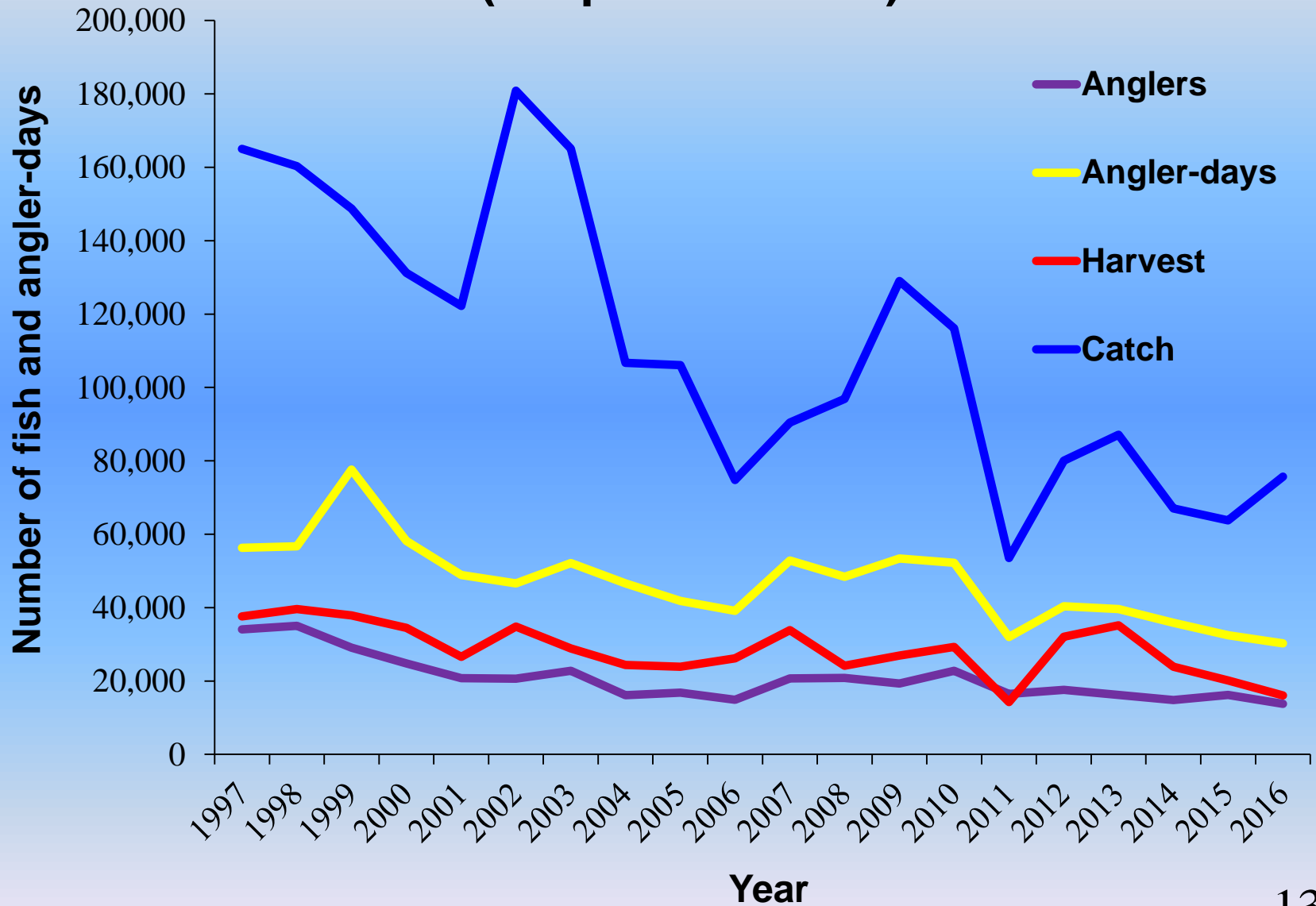


# UCUSMA sport fish proposals

- **Proposal 23:** Prohibit catch and release fishing
- **Proposal 24:** Simplify sockeye salmon regulation.
- **Proposal 25:** Remove bait/hook restriction Upper Susitna River

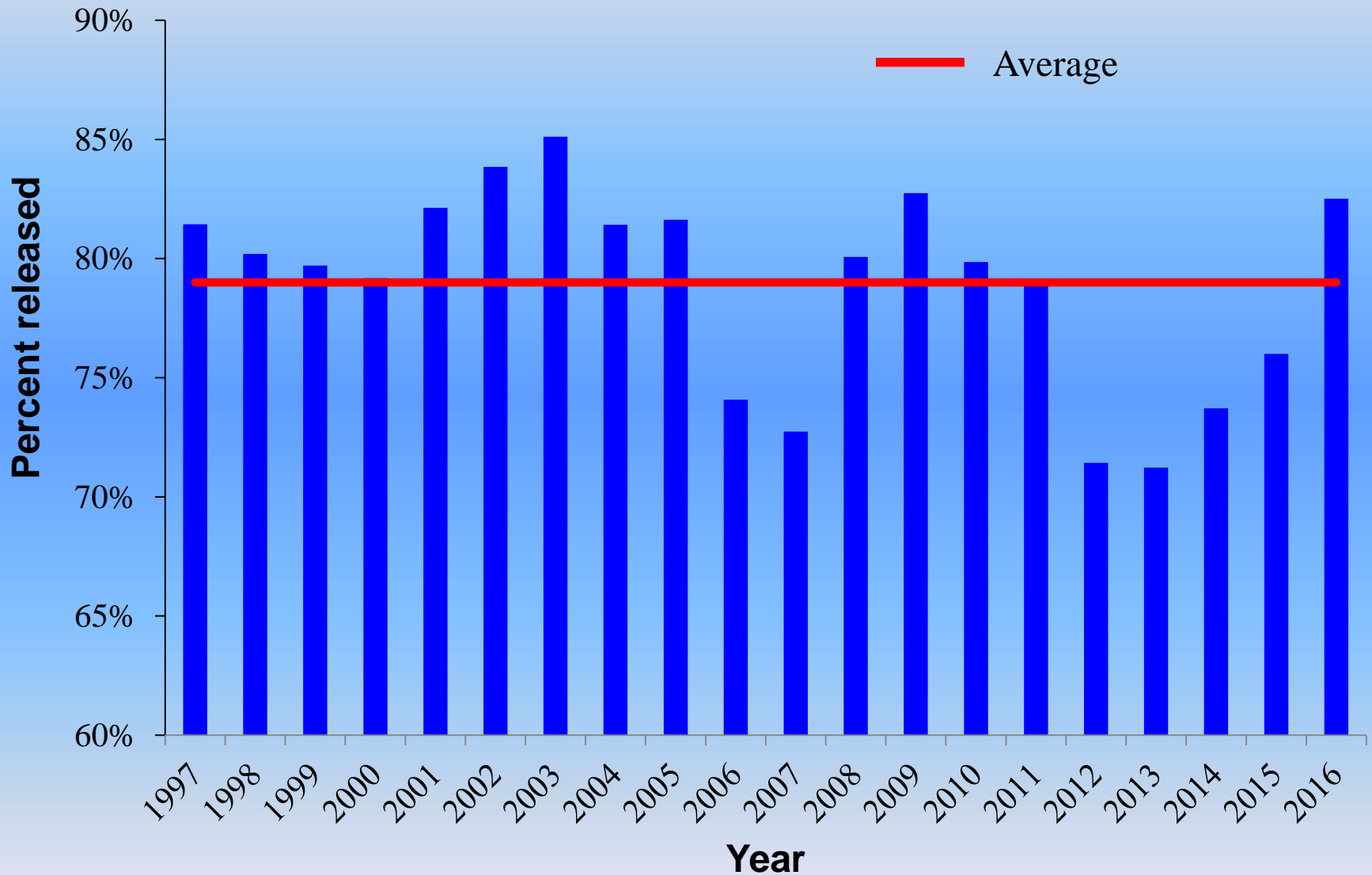


# Sport fish effort, harvest, and catch (Proposals 23-25)





## Total release rate of UCUSMA sport fish (Proposal 23)







**Season June 7 – September 30: Weekly openers based on sonar abundance**

**Permits available online and over-the-counter**

**\$15.00 fee for permit**

**Limit 25 fish/permit holder (only 1 king salmon) with 10 sockeye salmon/additional HH member**

**Chitina Subdistrict personal use dip net fishery**









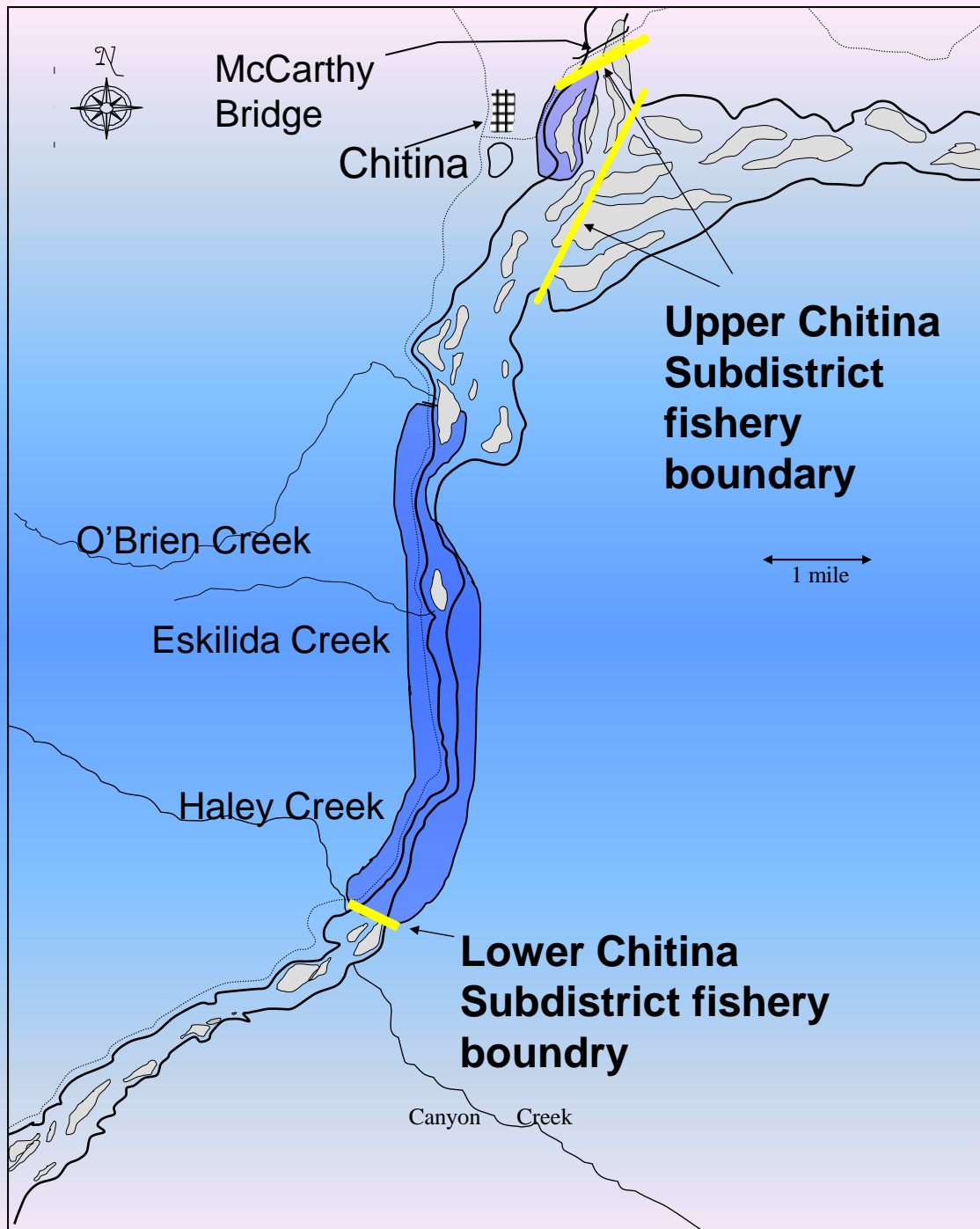




# UCUSMA personal use proposals

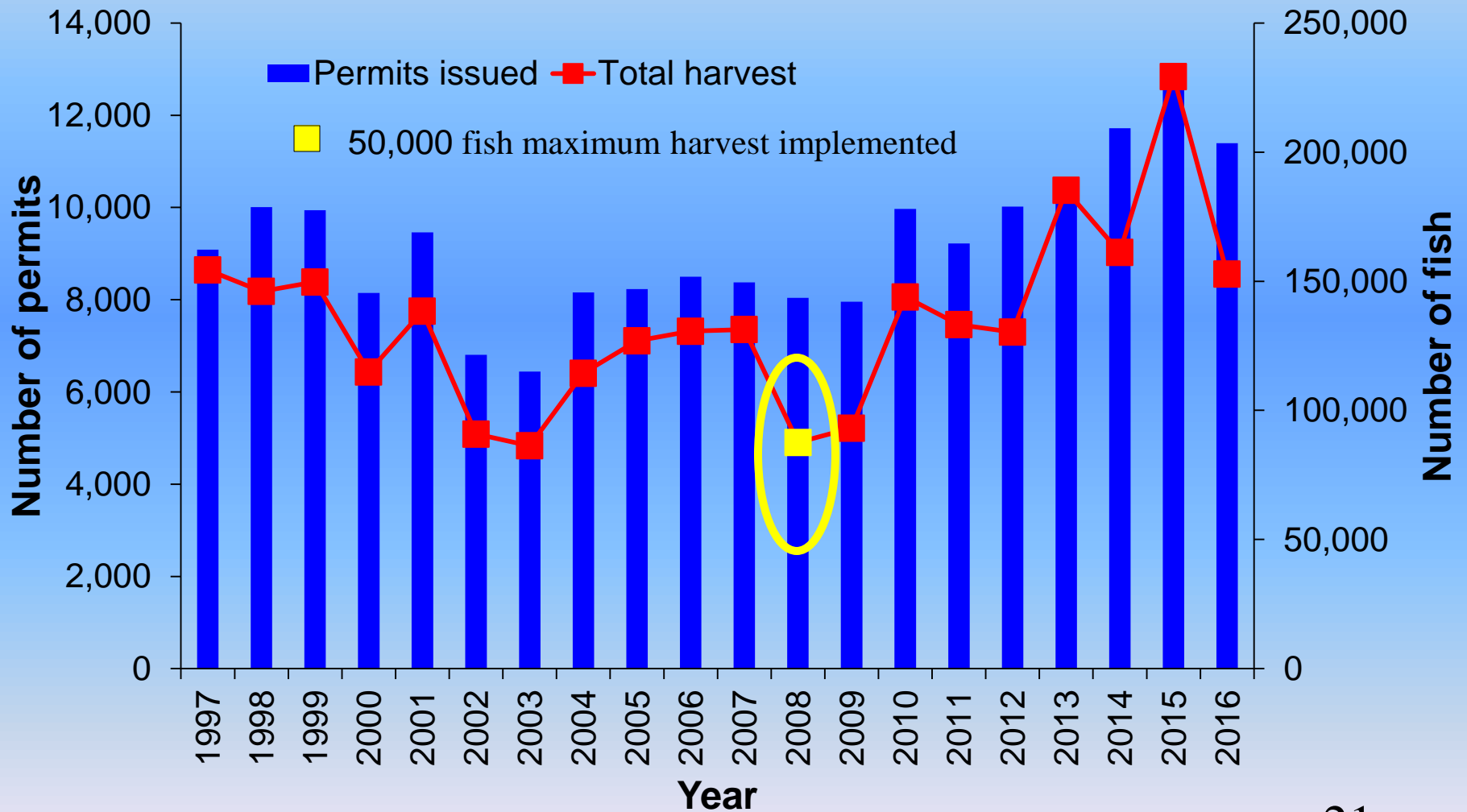
- **Proposal 15:** Prohibit monofilament in dip nets
- **Proposal 16:** Require logbooks
- **Proposal 17:** Extend lower boundary of CSD
- **Proposal 18:** Remove automatic harvest limit reduction







# Chitina Subdistrict participation and harvest (Proposals 13, 17, & 18)





**Fish wheels and dip nets allowed**

**Season: June 1 – September 30**

**Annual limit 30 fish/HH of 1 & 60 fish/HH of 2  
10 fish/ each additional HH member**

**May request up to 200 fish/HH of 1  
500 fish/HH of 2+**

**Dip net gear limited to 5 king salmon**

**Glennallen Subdistrict subsistence salmon fishery**











# UCUSMA subsistence proposals

- **Proposal 11:** Establish Batzulnetas Area season in regulation
- **Proposal 12:** Require live-box or closely attend
- **Proposal 13:** Prohibit dipnetting from boat
- **Proposal 14:** Modify GSD season based on king salmon forecast
- **Proposal 15:** Prohibit monofilament in dip nets
- **Proposal 16:** Require logbooks

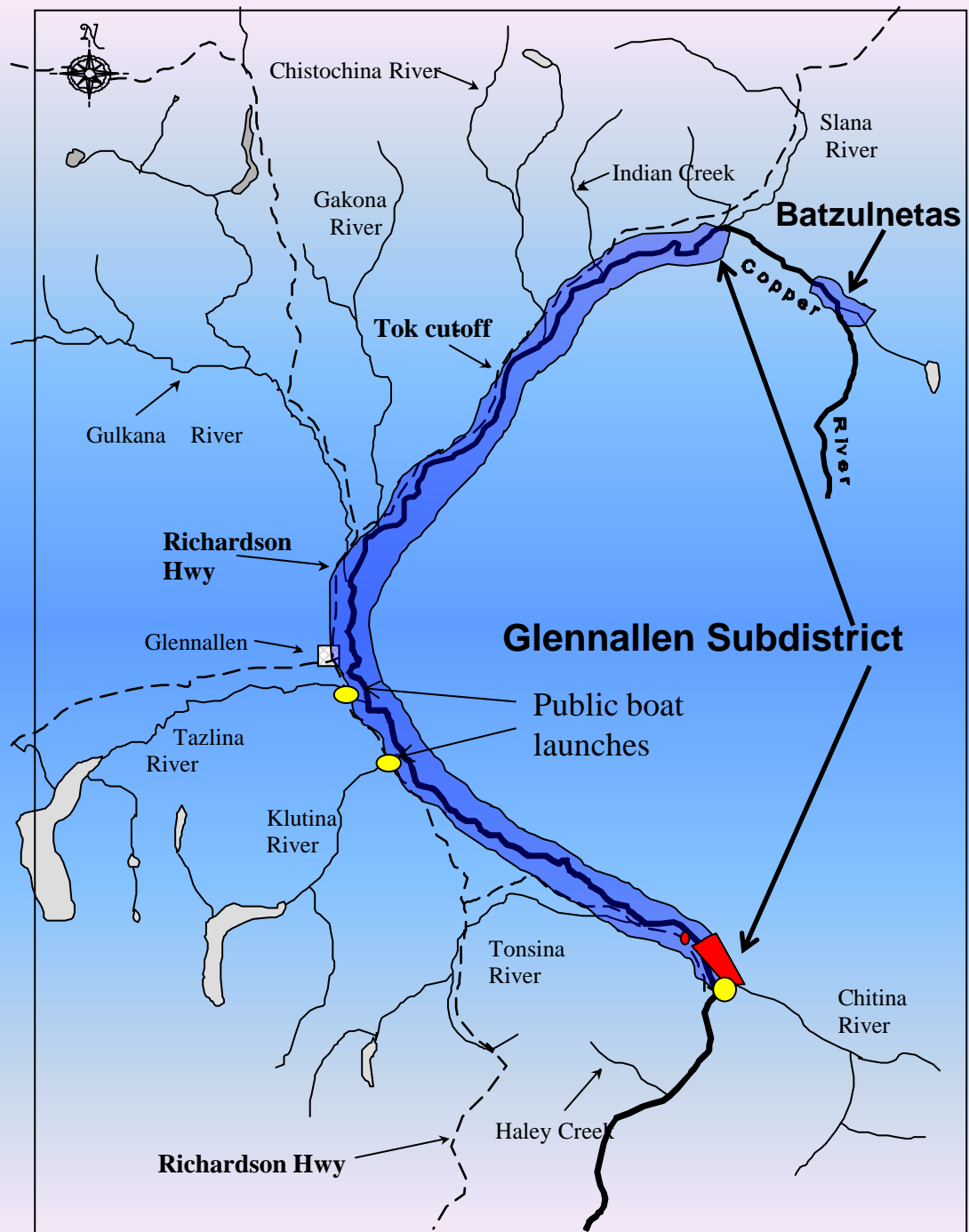






Image © 2017 DigitalGlobe  
© 2017 Google

Google earth

27

2008

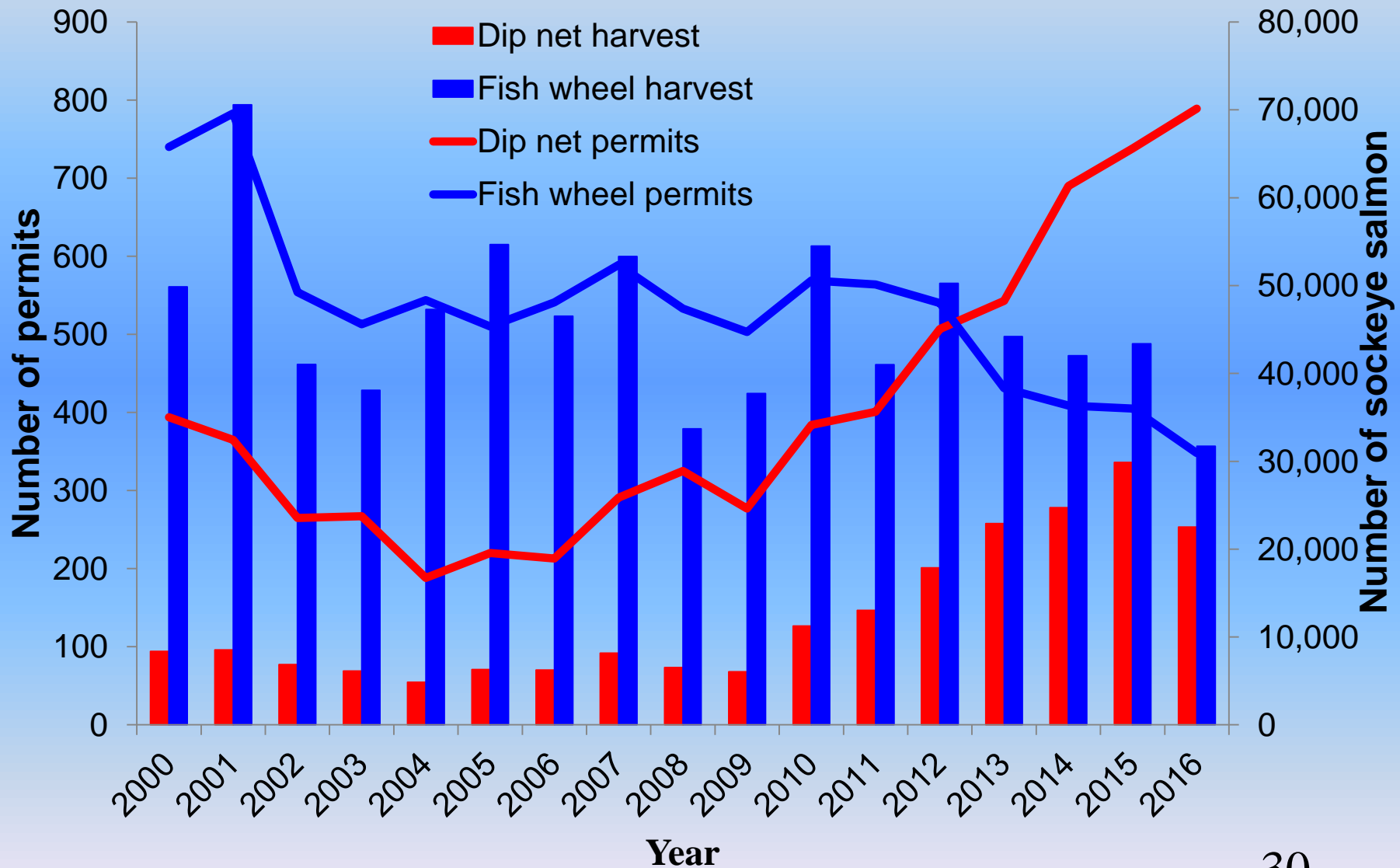
Imagery Date: 7/13/2014 lat 61.556349° lon -144.419500° elev 485 ft eye alt 35346 ft







# GSD state permits fished and sockeye harvest (Proposals 12-15)





# GSD state permits fished and king salmon harvest

(Proposals 12-15)

