

GENERAL REGULATIONS - FRESH WATER

The fresh water sport fishing season is open year-round for all species, except for king salmon in the fresh waters between Cape Fairweather and the International Boundary at Dixon Entrance, and unless otherwise noted below or in special regulations.

Check for emergency orders online at www.adfg.alaska.gov/sf/EONR prior to fishing.

KING SALMON

• **YAKUTAT AREA** - between Cape Suckling and Cape Fairweather: See map on page 15.

• **Alaska Residents:**

- 20 inches or longer: 1 per day, 1 in possession.
- Less than 20 inches: 10 per day, 10 in possession.

• **Nonresidents:**

-  **20 inches or longer: Annual limit of 1 fish.**
- Less than 20 inches: 10 per day, 10 in possession.

• **SOUTHEAST ALASKA** - outside of the Yakutat Area:

- **Closed to king salmon fishing.** See exceptions in Juneau/Glacier Bay, Petersburg/Wrangell, and Sitka Management areas.

COHO SALMON

• **Between Cape Suckling and Cape Fairweather:**

- 16 inches or longer: 4 per day, 8 in possession.

• **Between Cape Fairweather and Dixon Entrance:**

- 16 inches or longer: 6 per day, 12 in possession.

CHUM, PINK, & SOCKEYE SALMON (INCLUDING KOKANEE)

- 16 inches or longer: 6 of each species per day, 12 of each species in possession.

CHUM, COHO, PINK, & SOCKEYE SALMON (IN COMBINATION INCLUDING KOKANEE)

- Less than 16 inches: 10 per day, 10 in possession.

STEELHEAD TROUT

- 36 inches or longer: 1 per day, 2 in possession. There is a 2 fish annual limit, harvest record is required. See page 5.

CUTTHROAT & RAINBOW TROUT (IN COMBINATION)

- 2 per day, 2 in possession, 11 inch minimum and 22 inch maximum size limit.

DOLLY VARDEN

- 10 per day, 10 in possession, no size limit.

BROOK TROUT

- 10 per day, 10 in possession, no size limit.

ARCTIC GRAYLING

- 10 per day, 10 in possession, no size limit.

OTHER FISH SPECIES NOT LISTED ABOVE

- No bag, possession, annual, or size limits.

GENERAL REGULATIONS - SALT WATER

The salt water sport fishing season is open year-round for all species, except for halibut, lingcod, rockfish, Tanner crab, and resident king crab fisheries, and unless otherwise noted below or in special regulations. For shellfish regulations see pages 34-37.

Check for emergency orders online at www.adfg.alaska.gov/sf/EONR prior to fishing.

KING SALMON

- 28 inches or longer: Bag, possession, annual, and size limits are established annually by an emergency order, as specified in the Southeast Alaska King Salmon Management Plan.
- Less than 28 inches: **Retention prohibited.**
- **Nonresidents:** A harvest record is required. See page 5. Anglers should check with the nearest ADF&G office for current bag, possession, annual, and size limit regulations.
- **Charter operators and their crew are prohibited from keeping king salmon while clients are on board.**

CHUM, COHO, PINK, & SOCKEYE SALMON

- 16 inches or longer: 6 of each species per day, 12 of each species in possession.
- Less than 16 inches: 10 per day, 10 in possession, in combination.

STEELHEAD TROUT

- 36 inches or longer: 1 per day, 2 in possession. There is a 2 fish annual limit, harvest record required. See page 5.


CUTTHROAT & RAINBOW TROUT (IN COMBINATION)

- 2 per day, 2 in possession, 11 inch minimum and 22 inch maximum size limit.

DOLLY VARDEN

- 10 per day, 10 in possession, no size limit.

SABLEFISH (BLACK COD)

-  **Alaska residents: 6 per day, 6 in possession, no size limit.**

- **Nonresidents:** 4 per day, 4 in possession, no size limit. There is a 8 fish annual limit, harvest record is required. See page 5.

SHARKS (EXCEPT SPINY DOGFISH)

- 1 per day, 1 in possession, no size limit. There is a 2 shark annual limit, harvest record required. See page 5.

SPINY DOGFISH

- 5 per day, 5 in possession, no size limit, harvest record is NOT required.

...continued

It is unlawful to operate a motorized or tracked vehicle, without a valid Fish Habitat permit, in or across waters where salmon, trout, Dolly Varden, Arctic char, sheefish, or whitefish spawn, rear, or migrate. For more information, please contact the ADF&G Habitat Division in Douglas at (907) 465-4105 or in Craig at (907) 826-2560.

▲
Cape
Suckling

ALASKA
CANADA

! Alaska Residents must follow nonresident regulations when fishing in the Exclusive Economic Zone or EEZ 3 to 200 nautical miles from the shoreline.

- Federal Waters Boundary
- State Waters Boundary
- Exclusive Economic Zone Boundary

Yakutat

Haines

Juneau

Sitka

Petersburg

Craig

Ketchikan

NEW **STATE WATERS** - Saltwaters from the shoreline up to 3 nautical miles offshore:

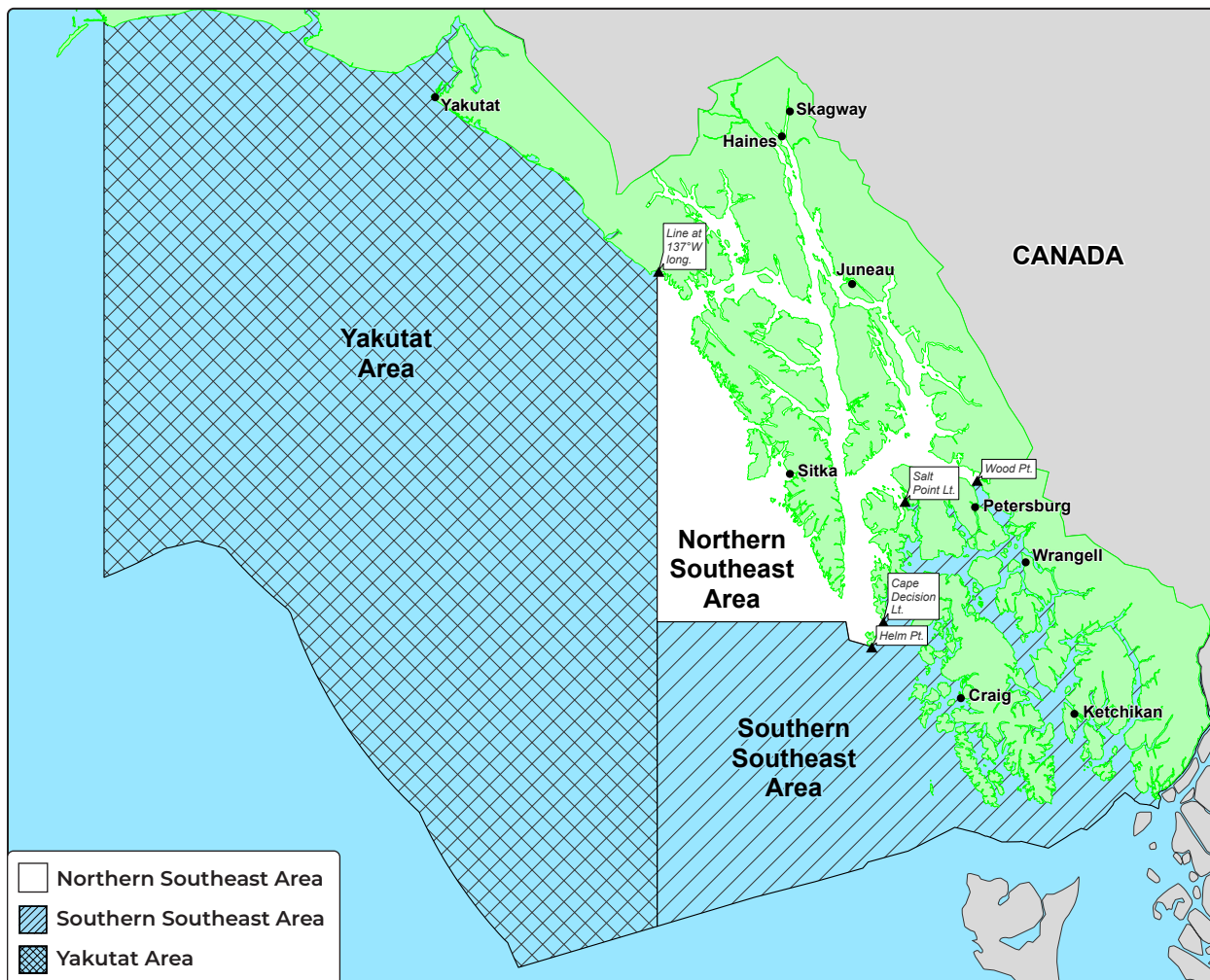
- When sport fishing in state waters, the following regulations apply to Alaska residents:
- Harvest record required for steelhead trout and sharks.
- Alaska resident harvest in state waters does not apply towards the annual limit in the EEZ.

NEW **EXCLUSIVE ECONOMIC ZONE WATERS (EEZ)** - All saltwaters 3 to 200 nautical miles from the shoreline:

- When sport fishing in EEZ waters, the following regulations apply to ALL anglers:
- Nonresident bag, possession, and annual limits. See page 9.
- Nonresident size limits apply.
- Nonresident seasonal closures.
- Harvest record required for king salmon, lingcod, demersal shelf rockfish, sablefish, steelhead trout, and sharks.

PLEASE NOTE:

Anglers may only possess the limit of fish allowed for the specific waters they are fishing. For example, a resident may not harvest a higher resident limit in state waters and then fish (for any species) in the EEZ waters.



GENERAL REGULATIONS - SALT WATER (CONTINUED)

LINGCOD

- **May 16-November 30:** Open to lingcod fishing, except for nonresidents in the Northern Southeast Area.
- **Charter operators and their crew are prohibited from keeping lingcod while clients are on board.**
- **YAKUTAT AREA:**
 - **Alaska Residents:** 1 per day, 2 in possession, no size limit.
 - **Nonresidents:** 1 per day, 1 in possession, no size limit. There is an annual limit of 2 fish, **1 of which is 40 inches or less in length, and 1 fish of any size.** Harvest record required. See page 5.
- **NORTHERN SOUTHEAST AREA:**
 - **Alaska Residents:** 1 per day, 2 in possession, no size limit.
 - **Nonresidents:**
 - **May 16-June 14 and August 16-November 30:** Open to lingcod fishing.
 - 1 per day, 1 in possession, 30-35 inches or 55 inches and longer. There is an annual limit of 2 fish, 1 of which is 30-35 inches in length, and 1 of which is 55 inches and longer. Harvest record required. See page 5.

• SOUTHERN SOUTHEAST AREA:

- **Alaska Residents:** 1 per day, 2 in possession, no size limit.
- **Nonresidents:** 1 per day, 1 in possession, 30-35 inches or 55 inches and longer. There is an annual limit of 2 fish, 1 of which is 30-35 inches in length, and 1 of which is 55 inches and longer. Harvest record required. See page 5.

...continued



Lingcod from Nichols Passage near Ketchikan.

GENERAL REGULATIONS - SALT WATER (CONTINUED)

HALIBUT

- **January 1-January 31: Closed to halibut fishing.**
- **February 1-December 31:** Open to halibut fishing.
- **Unguided anglers:** 2 per day, 4 in possession, no size limit.
- Pacific halibut fisheries are managed by the federal government under international treaty.
- Federal possession and landing requirements for sport-caught halibut differ from state regulations. Possession includes unpreserved AND preserved fish for halibut.
- **Proxy fishing for halibut is not allowed.**
- No person shall possess on board a vessel, including charter vessels and pleasure craft used for fishing, Pacific halibut that have been filleted, mutilated, or otherwise disfigured in any manner, except that each Pacific halibut may be cut into no more than 2 ventral pieces, 2 dorsal pieces, and 2 cheek pieces, with a patch of skin on each piece, naturally attached.
- Consult federal regulations for the following: bag, size, and possession limits for guided (charter) anglers; possession and landing requirements, and inseason changes to the regulations.
- Federal halibut regulations are available through NOAA Fisheries Alaska Region at (907) 586-7228.

www.alaskafisheries.noaa.gov/fisheries/sport-halibut

OTHER FISH SPECIES NOT LISTED ON PAGES 9-12

- No bag, possession, annual, or size limits.

ALL ROCKFISH

- All vessels must have at least one functional deepwater release mechanism on board and readily available for use when sport fishing activities are taking place regardless of species targeted.
- All rockfish not retained must be released at the depth they were caught or 100 feet, whichever is shallower.
- Upon request, a deepwater release mechanism must be presented to a local representative of ADF&G or a peace officer of the state.

PELAGIC ROCKFISH

- Pelagic rockfish include black, dark, deacon, dusky, widow, and yellowtail. These six species are uniformly gray, green, brown, or black. See page 39. All rockfish not listed as pelagic are considered nonpelagic.

NEW 3 per day, 6 in possession, no size limit.

NONPELAGIC ROCKFISH (DEMERSAL SHELF & SLOPE ROCKFISH) - All Southeast Waters:

- **DEMERSAL SHELF ROCKFISH (DSR)** - includes canary, China, copper, quillback, rosethorn, tiger, and yelloweye rockfish. See pages 39-40.
 - **Alaska Residents:** 1 per day, 2 in possession, no size limit.
 - **Nonresidents:**
 - **NEW** July 1-August 25: Open to DSR fishing.
 - 1 per day, 1 in possession, no size limit.
 - There is an annual limit of 1 fish. Harvest record required. See page 5.

- **SLOPE NONPELAGIC ROCKFISH** - includes blackgill, blackspotted, blue, bocaccio, brown, chilipepper, darkblotched, greenstriped, harlequin, northern, Pacific Ocean perch, Puget Sound, pygmy, redstripe, redbanded, rougheye, sharpchin, shortbelly, shortraker, silvergray, splitnose, stripetail, vermilion, and yellowmouth. See pages 39-40.
 - 1 per day, 2 in possession, no size limit.

Examples of Rockfish Release Devices

ATTENTION SALTWATER ANGLERS:

Anglers must carry a deepwater release device onboard their vessel when sport fishing in salt water and will be required to use the device to release rockfish that are not harvested at depth of capture or 100 feet.

For more info. on deepwater release devices, see pages 39-40 or visit <https://www.adfg.alaska.gov/index.cfm?adfg=fishingRockfish.main>.

