

# SPORT FISHING REGULATIONS SUMMARY

*Effective until the 2023 Summary is issued*

# Southeast ALASKA



#wefishak



# 2022



Scan the QR code to  
download the ADFG  
Mobile App today!

.....

Sport fishing and hunting  
regulations and much more!

WWW.ADFG.ALASKA.GOV

LICENSING  
& REGIONAL  
REGULATIONS

YAKUTAT

HAINES &  
SKAGWAY

JUNEAU &  
GLACIER BAY

SITKA

PETERSBURG  
& WRANGELL

PRINCE OF  
WALES ISLAND

KETCHIKAN

## Contents

Booklet Instructions and Regional Map . . . . .	3
Rockfish Release Requirements . . . . .	4

### LICENSES:

#### *Licensing:*

License Requirements and Fees. . . . .	5–6
King Salmon Stamp Requirements and Fees. . . . .	6
Harvest Records. . . . .	6

#### *General Regulations & Limits:*

Liability for Violations. . . . .	7
Prohibited Acts. . . . .	7
Methods and Means. . . . .	7–8
Sport Fishing From Commercially Licensed Vessels. . . . .	8
Use of Sport-Caught Fish as Bait . . . . .	8
Possession of Sport-Caught Fish . . . . .	8

#### *Seasons, Bag Limits & Size Limits:*

Fresh Water . . . . .	9
Salt Water. . . . .	10–12

### SPECIAL REGULATIONS BY AREA:

<b>Southeast Alaska Waters Index</b> . . . . .	13–14
<b>Yakutat</b> . . . . .	15–16
<b>Haines/Skagway</b> . . . . .	17–18
<b>Juneau/Glacier Bay</b> . . . . .	19–22
<b>Sitka</b> . . . . .	23–25
<b>Petersburg/Wrangell</b> . . . . .	26–27
<b>Prince of Wales Island</b> . . . . .	28–29
<b>Ketchikan</b> . . . . .	30–32

### OTHER INFORMATION:

Shellfish Regulations . . . . .	33–36
Species Information and Identification . . . . .	37–41
Definitions. . . . .	42–43
Trout Management . . . . .	44
Felt-Soled Footgear Prohibited. . . . .	45
Trophy Fish Program . . . . .	46
Transfer of Possession Form. . . . .	47
Regional Offices Map / Message . . . . .	48

## *Alaska Department of Fish and Game*



### **DIVISION OF SPORT FISH**

1255 W. 8th Street  
P.O. Box 115526  
Juneau, Alaska 99811-5526  
(907) 465-4180

Mike Dunleavy, *Governor*  
Doug Vincent-Lang, *Commissioner*  
Dave Rutz, *Director*

The Department of Fish and Game (ADF&G) is responsible for managing fish and game under statutory authority from the Alaska Legislature. By law, the mission of the Department of Fish and Game is to protect, maintain, and improve the fish, game, and aquatic plant resources of the state, and manage their use and development in the best interest of the economy and the well-being of the people of the state, consistent with the sustained yield principle.

The Division of Sport Fish is one of five divisions in the department. By law, the mission of the Division of Sport Fish is to protect and improve the state's recreational fisheries resources. Division of Sport Fish operations are largely funded by anglers and recreational boaters through contributions to Federal Aid in Sport Fish Restoration and Fish and Game funds. At least 15 percent of the state's federal aid apportionment must be used for improvement of recreational boating facilities and access.

### **ADF&G may change fishing regulations at any time by emergency order.**

Statewide, numerous emergency orders may be issued to open or close seasons or areas, modify bag limits and methods and means in any given year. Most, but not all, affect salmon fishing, as opposed to fishing for resident species. Emergency orders may also be posted at key access points. All emergency orders are widely announced via news media, and are accessible on recorded ADF&G hotlines, at ADF&G offices (see a list on the back cover), and online at [www.adfg.alaska.gov/SF/EONR](http://www.adfg.alaska.gov/SF/EONR).

## **Sport Fish Regulations** **Alaska Board of Fisheries**

The Alaska Board of Fisheries (Board) adopts Alaska's fishing regulations under statutory authority from the Alaska Legislature. The Board sets fishing seasons, bag limits, and methods and means. It also sets policy and provides direction of the management of the state's fishery resources through regulatory management plans. The Board consists of seven members that are appointed by the governor, confirmed by the Legislature, and serve 3-year terms.

The Board process is one of the more open systems for incorporating public input into state fisheries policy. The Board meets four to six times per year to consider proposed changes to fishing regulations in specific areas of the state. Any individual or organization may submit a proposal to change a fishing regulation. The Board uses biological and socioeconomic information provided by the Alaska Department of Fish and Game, public comment, and guidance from the Alaska Department of Public Safety and Alaska Department of Law when creating regulations.

The Board meets on a 3-year cycle. It most recently addressed Prince William Sound/Upper Copper and Upper Susitna Rivers Finfish and Shellfish (except shrimp) regulations in November 2021.

### **Alaska Board of Fisheries Current Members**

Märit Carlson-Van Dort (Chair). Anchorage  
Israel Payton . . . . . Wasilla  
John Jensen . . . . . Petersburg  
John Wood . . . . . Willow  
Gerad Godfrey . . . . . Eagle River  
McKenzie Mitchell . . . . . Fairbanks  
Vacant . . . . . TBD

For more information on the board process, contact the Alaska Department of Fish and Game, Boards Support Section at: (907) 465-4110.

# How to Use This Book



**Licensing Requirements** - Read licensing and harvest recording requirements on pages 5 and 6.

**Regional Regulations** - Read the regional regulations for allowable sport fishing gear, possession requirements for sport-caught fish, and other general regulations, as well as prohibited acts.

**General Regulations** - Read the general regulations for seasons, bag, possession, and size limits, and methods and means for the area in which you intend to fish.

**Special Regulations** - Check the Southeast Alaska Waters Index on pages 13-14. If a special regulation exists for the species when and where you plan to fish, follow the special regulation; special regulations supersede the general regulations listed for that area. If the waters you plan to fish DO NOT APPEAR in the index or within the special regulations, follow the general regulations for seasons, bag, possession, and size limits, and methods and means for that area.

This summary of Alaska sport and personal use fishing and shellfish regulations is published by the Division of Sport Fish as a service to anglers. It is not intended to be a complete digest of all fishing regulations.

For a complete list of all sport fishing regulations, see the Alaska Administrative Code, Title 5 at:

<http://www.legis.state.ak.us/basis/folioproxy.asp?url=http://www.jnu01.legis.state.ak.us/cgi-bin/folioisa.dll/aac>

**Some regulations in this booklet may be changed by the Alaska Board of Fisheries during its regular meetings, by emergency regulation, or by emergency order at any time.**

## Emergency Orders: *Inseason changes to regulation*

Regulations in this booklet may be changed by emergency order at any time. If an inseason change has been made by emergency order for the species when and where you plan to fish, follow the inseason regulation; inseason regulatory changes prevail over the regulations listed in this booklet. All such changes can be found by contacting any ADF&G Sport Fish Office or online at the ADF&G website.



**You can sign up to receive emergency order notifications via email.**  
**Visit: [www.wefishak.alaska.gov](http://www.wefishak.alaska.gov) for more information.**

## The ADFG Mobile App is Here!

- Display fishing and hunting licenses, and permits
- Access to fishing and hunting regulations
- Maps and much more!



Search "ADFG Mobile App"



## Cover Photos

- **Main Image:** Brooks Parker, age 6, with spot shrimp.
- **Inset Left:** A beautiful rainbow trout on the fly.
- **Inset Middle:** A real Southeast Alaska bounty from the sea.
- **Inset Right:** Southeast Alaska steelhead.



# Proper **Catch and Release** Methods

4

Sport fishing in Alaska requires sound and ethical angling practices to ensure continued opportunity for years to come. By following these tips when fishing, an angler can help increase the chance of survival for released fish and help conserve some of Alaska's most unique and important resources.



Take pictures of the fish in the water.



Hooking mortality is often higher for fish hooked in vital areas such as the gills and stomach. Bait increases the chance of hooking in these areas.

## DO

- Handle the fish as little as possible. If you must touch the fish, use wet hands to maintain scale integrity.
- Use tools such as pliers or forceps to remove the hook without removing the fish from the water.
- Support the weight of fish along the length of its entire body.
- Barbless hooks, single hook lures, or flies allow for an easier release.
- Use hooks that will rust away. This provides anglers the option to cut the line near the hook if the fish is hooked in a vital area such as the gills, esophagus or stomach.
- Use knotless or rubber nets if a landing net is necessary before release.
- Use a deepwater release device when releasing rockfish (see page 39).

## DON'T

- Don't use bait if you plan to release the fish. Fish typically swallow bait deeper which can increase release mortality.
- Don't remove the fish from the water unless necessary for dehooking, measuring or for identification.
- Don't use a gaff to puncture a fish that is intended for release.
- Don't fight the fish until exhaustion.
- Don't suspend a fish by its lip, gill plate or tail.
- Don't release a fish without reviving it by supporting it in water until it is able to swim away.



## An Alaska sport fishing license is required for all resident anglers 18 and older and nonresident anglers 16 and older to fish in all fresh and salt waters of Alaska.

- In accordance with the regulations outlined in this summary booklet, a sport fishing license allows you to take, or attempt to take, finfish or shellfish in the fresh or salt waters of Alaska. Additionally, you may need a King Salmon Stamp or a Harvest Record Card (see page 6).
- Your sport fishing license, PID or DAV must be in your possession while you are sport fishing.
- All persons engaged in sport fishing or in possession of sport-caught finfish or shellfish must show their sport fishing license, required harvest record and/or stamp, and their harvest to any representative of ADF&G or any peace officer of the state, upon request.
- No person may alter, loan, or transfer to any other person any sport fishing license; and no person may use any license issued to another person.
- If your sport fishing, hunting, or trapping license is revoked in any state, you may not obtain an Alaska sport fishing license.

### A Resident of Alaska is a Person Who...

For the preceding 12 consecutive months, has maintained a home in Alaska with the intent to stay, and who is not claiming residency (or receiving benefits under a claim of residency) in another state, territory or country. Benefits include but are not limited to, applying for a resident fishing or hunting license in another state, obtaining a driver's license in another state, or receiving benefits or paying taxes as a resident of another state.

### Active Duty Military Personnel and Their Dependents...

- Stationed in Alaska for the preceding 12 months may purchase a resident sport fishing license regardless of benefits received in another state. Resident sport fishing regulations apply.
- Permanently stationed in Alaska for less than 12 months may purchase a nonresident military license and nonresident military annual king salmon stamp at reduced rates and are considered nonresidents. Nonresident sport fishing regulations apply.

If you have questions about your residency, call your local Alaska Wildlife Troopers (telephone numbers listed on page 43).

## License Fees | Alaska Residents

**Annual sport fishing license** ..... \$20

*Alaska residents 18 or older. Valid for the calendar year.*

**ADF&G Permanent (Senior) ID Card (PID)..... Free to qualifying residents**

**Alaska residents** 60 or older may apply for a PID for hunting, fishing, and trapping. *For residents only* - if you become a nonresident, your PID is no longer valid, requiring you to purchase a nonresident sport fishing license.

**ADF&G Disabled Veteran Card (DAV)..... Free to qualifying residents**

**Alaska residents** who are disabled veterans (with disability of 50% or greater that was incurred during military service), may apply for a DAV for hunting and fishing. If you become a nonresident, your DAV is no longer valid, requiring you to purchase a nonresident sport fishing license.

**Sport fishing license for the blind** ..... \$0.50

*Affidavit required—available from license vendor or ADF&G.*

**Income restricted**..... \$5

*To be eligible for a low income license, an Alaskan resident must have an annual family or household income equal to or less than the most recent poverty guidelines for the state set by the U.S. Department of Health and Human Services for the year preceding application. A.S. 16.05.340 (a)(6)*

*Visit: <http://www.adfg.alaska.gov/index.cfm?adfg=license.lowincome>*

## License Fees | Nonresidents

1-day sport fishing license ..... \$15

3-day sport fishing license ..... \$30

7-day sport fishing license ..... \$45

14-day sport fishing license..... \$75

Annual sport fishing license..... \$100

*\* Nonresidents under the age of 16 do not need to purchase a sport fishing license.*

*\* Residents of Yukon Territory may purchase nonresident licenses at Alaska resident license fees.*

### **Nonresident Military License and Fee**

**Nonresident annual military sport fishing license** ..... \$20

*Only for active duty members of military service permanently stationed in Alaska for less than 12 months or for dependent(s) of such.*

## HARVEST RECORDING REQUIREMENTS

Harvest records are required by **ALL** anglers when harvesting any species with an annual limit. Species with an annual limit are listed in the General Regulations section.

- Areas to record harvested species with an annual limit are printed on each sport fishing license.
- A harvest record card is required for resident anglers under 18, nonresident anglers under 16, and PID or DAV licensed anglers.
- Immediately upon landing and retaining a fish that has an annual limit, all anglers must enter the species, date, and location, IN INK, on the harvest record form on the back of their sport fishing license or their harvest record card.
- A person obtaining a duplicate or additional license or harvest record card must transfer their harvest records of species with annual limits previously landed during the current year to their new license or harvest record card.



Alaska Department of Fish & Game  
Division of Sport Fish  
**Sport Fishing  
Harvest Record Card**

Fill in the information below. See the back of this card for more instructions, or visit [www.adfg.alaska.gov](http://www.adfg.alaska.gov) for more information.

Name \_\_\_\_\_

Check ONE: ☐ Resident Senior ☐ Resident Disabled Veteran  
☐ Non-resident under 16 ☐ Resident under 18

Senior or DAV license number: \_\_\_\_\_

OR, if youth angler, age & birthday: \_\_\_\_\_

☐ Check here if this is a replacement for a lost card(s). By law, anglers must transfer **ALL** harvest information from the lost card(s) to this card.

DATE of harvest	NAME OF WATER where the fish was harvested	SPECIES OF fish harvested

Harvest Record Card

## LICENSES/STAMPS/HARVEST CARDS

**Sport fishing licenses and King Salmon Stamps** may be purchased online at: [www.adfg.alaska.gov/store](http://www.adfg.alaska.gov/store) or from a license vendor (most sporting goods stores).

**Harvest Record Cards** are available online at: [http://www.adfg.alaska.gov/static/license/sportlicense/pdf/sf\\_harvest\\_record\\_card.pdf](http://www.adfg.alaska.gov/static/license/sportlicense/pdf/sf_harvest_record_card.pdf), from ADF&G offices, and from fishing license vendors.

**PID/DAV licenses** – Apply online at: <http://www.adfg.alaska.gov/index.cfm?adfg=license.proxy>

## KING SALMON STAMP

Anglers sport fishing for king salmon (except king salmon stocked in landlocked lakes) must purchase a current year's king salmon stamp. Stamps purchased online can be printed immediately. If you purchase a physical stamp, it must be signed across the face of the stamp, in ink, and stuck to the back of your sport fishing license.



**This is an example of a king salmon stamp purchased online.**

## King Salmon Stamp Fees

<b>Resident king salmon stamp</b> .....	<b>\$10</b>
Nonresident 1-day stamp .....	\$15
Nonresident 3-day stamp .....	\$30
Nonresident 7-day stamp .....	\$45
Nonresident 14-day stamp .....	\$75
Nonresident annual stamp .....	\$100
Nonresident military annual stamp .....	\$30
Duplicate stamp .....	\$5

### The following persons do not need a king salmon stamp:

- Resident anglers under 18 and nonresident anglers under 16.
- Residents who possess an ADF&G PID or a DAV card.
- Residents with the \$5 income restricted license.
- Residents with the 50¢ license for the blind.



Use our secure server to buy your licenses, stamps, and tags online!

[www.adfg.alaska.gov/store/](http://www.adfg.alaska.gov/store/)



## DATA COLLECTION REQUIREMENTS

- Upon request by a department representative or state peace officer, anglers must forfeit the heads of any salmon or trout with external or internal tags or an adipose finclip along with date and location of catch.

## LIABILITY FOR VIOLATIONS

- Unless otherwise provided by regulation or statute, a person who violates a provision of these regulations is strictly liable for the offense, regardless of that person's intent.

## PROHIBITED ACTS

### **CLOSED WATERS/ WATERS CLOSED TO SPORT FISHING:**

- Unless otherwise posted by department markers, it is unlawful to cast, drift, or place by any means a hook, bait, artificial lure, or artificial fly into waters closed to sport fishing.

### **BAIT PROHIBITED IN FRESH WATER FROM NOVEMBER 16 THROUGH SEPTEMBER 14:**

- Only unbaited, artificial lures or flies may be used.
- The use of bait is only allowed from September 15 through November 15, unless otherwise noted in the Special Regulations listed on pages 15–32.

### **FELT-SOLED BOOTS PROHIBITED:**

- The use of footwear with absorbent felt or other fibrous material on the soles is prohibited while sport fishing in fresh water (*see page 45*).

### **GAFFS PROHIBITED:**

- A gaff may not be used to puncture any fish intended or required to be released.

### **MOLESTING OF FISH:**

- Molesting or impeding spawning or the natural movement of fish contrary to lawful methods and means of sport fishing is prohibited.

## **POSSESSION OR MARKING OF LIVE FISH OR LIVE FISH EGGS:**

- It is unlawful to possess, transport, or release live fish or live fish eggs, or in any way mark any live fish prior to release,
  - Except in accordance with the terms of a permit that may be issued by the Commissioner under 5 AAC 41 or AS 16.05.930(a),
  - Or in accordance with sport fishing provisions listed on page 8 under “Use of sport-caught fish as bait.”

## **POSSESSION AND TRANSPORT OF AQUATIC ORGANISMS:**

- It is unlawful for a person to collect, transport, possess, propagate, export from the state, or release into the waters or the lands of the state, any aquatic organism;
- Except in compliance with the terms of a fish resource or aquatic resources permit issued by the commissioner, and under the provisions of Chapter 5 AAC 41.
- It is unlawful for a person to possess, import, propagate, transport, release, purchase, or sell within the state a banned invasive species, classified under 5 AAC 41.075, including any part of the organism, such as reproductive or genetic material, at any stage of its life cycle (see Definitions).
- Except as provided in Chapter 5 AAC 41.

## **SALE OF SPORT-CAUGHT FISH PROHIBITED:**

- No person may buy, sell, or barter sport-caught fish or their parts.

## **SNAGGING IN FRESH WATER PROHIBITED:**

- It is unlawful to intentionally snag or attempt to snag any fish in fresh water.
- "Snag" means to hook a fish elsewhere than in its mouth. A fish unintentionally hooked elsewhere than its mouth must be released immediately.

## **WASTE OF FISH:**

- The intentional waste or destruction of any species of sport-caught fish is prohibited.

## **USE OF EXPLOSIVES OR TOXICANTS:**

- The use of any toxicant or explosive is prohibited in the taking of any fish in the waters of Alaska. Except that a shaft tipped with an explosive charge (commonly known as a bangstick or powerhead) or a firearm may be used on board a vessel in salt water to dispatch a fish caught with legal gear.

## METHODS AND MEANS

### **SPORT FISHING GEAR:**

Unless otherwise provided in regulation, sport fishing may be conducted only by use of:

- A single line per angler attached to not more than one plug, spoon, spinner, or series of spinners, or two flies, or two hooks.
- The line must be closely attended.
- No more than six lines may be fished from any vessel.
  - The maximum number of fishing lines that may be fished from a vessel engaged in charter activities is equal to the number of paying clients on board the vessel but cannot exceed six lines.

### **FRESH WATER SPORT FISHING:**

Fish may **not** be taken in fresh water by means of:

- Fixed or weighted hooks and lures (except those of standard manufacture).
- Multiple hooks with gap between point and shank larger than one-half inch.
- Spear, unless permitted by area regulations; or arrow, unless permitted by area regulations.
- Bowfishing is prohibited in Southeast Alaska.
- The use of bait is only allowed from September 15 through November 15. This regulation applies to all fresh waters, unless otherwise noted in the specific exceptions listed on pages 15-32.
- Fresh waters closed to salmon fishing but open to trout, grayling, char, or kokanee fishing are also open to the taking of salmon less than 16-inches in length.
- Sport fishing through the ice is permitted with the use of two closely attended lines, provided only one hook or artificial lure is used on each line.

### **FISH LADDERS:**

- Fishing is allowed within 300-feet of fish ladders unless otherwise posted by department markers. No person may fish from, on, or in a fish ladder.



**METHODS AND MEANS (CONTINUED)****POWER-ASSISTED FISHING REEL:**

A power-assisted fishing reel may only be used to sport fish if:

- The reel is mounted on a fishing rod by means of a reel seat and;
- The reel assembly, motor, gearbox, fishing line, reel-mounted battery, or other reel-mounted attachments weigh no more than 15 pounds in total when detached from the fishing rod.

**SPORT FISHING GEAR FOR HERRING AND SMELT:**

- In salt water, herring and smelt may be taken with the use of 15 or less unbaited single or multiple hooks attached to a single line.

**USE OF UNDERWATER SPEAR (SALT WATER):**

- In salt water, spears and spearguns may be used to take fish, subject to applicable seasons and limits, by persons who are completely submerged, provided that the spear or speargun is not tipped with an explosive charge.
- Bowfishing is prohibited in Southeast Alaska.

**USE OF ATTRACTOR (BEAD):**

An attractor, including a bead, when used with an artificial fly, artificial lure, or bare hook, must be:

- Either fixed within two inches of the bare hook, fly, or lure,
- Or be free sliding on the line or leader.
- A bead fished on the line above a bare single hook is legal gear in waters where only flies may be used.

**SPORT FISHING FROM  
COMMERCIALLY LICENSED VESSELS**

- A person sport fishing from a vessel licensed for commercial salmon fishing shall immediately mark harvested salmon by removing its dorsal (large back) fin. This marking requirement doesn't apply to commercial vessels that are also registered as charter vessels when paying clients are on board.
- Sport fishing from a commercially licensed vessel while commercially caught salmon are in possession is illegal in waters closed to commercial salmon fishing.
- A person may not sport fish and commercial fish for salmon from the same vessel on the same day.
- A person may not possess unpreserved sport caught salmon on any commercial salmon vessel while engaged in commercial salmon fishing.
- Additional restrictions and provisions apply to persons and vessels who participate in commercial shellfish fisheries. See commercial shellfish regulations for specific information.

**USE OF SPORT-CAUGHT FISH AS BAIT**

- Unless provided for in this section, fish taken under sport fishing regulations may not be used as bait, except:
  - Herring, chum salmon, pink salmon, and whitefish may be used as bait, and:
  - Species for which bag limits and seasons are not provided for in sport fishing regulations, as well as:
  - The head, tail, fins, closely trimmed skeleton, and viscera of legally taken sport fish, may be used as bait.
- Live herring and other species for which no seasonal or harvest limits are specified in sport fishing regulations may be used as live bait, except that live fish may **not** be used as bait for sport fishing in fresh water.
  - Live bait may be possessed, transported or released only in the salt waters of the regulatory area in which it was taken.

**POSSESSION OF SPORT-CAUGHT FISH  
(EXCEPT HALIBUT)**

- Sport-caught fish, their parts, and articles manufactured from such fish may be possessed within the state by any person at any time, and may be transported within and exported out of the state by any person at any time, except that no person may possess any unpreserved fish, or part of one, not legally taken by the angler, unless the angler furnishes, upon request of any peace officer of the state, a statement signed by the person taking the fish stating the type of fish, number of fish, location, date taken, and license number. The statement is unnecessary if the person possessing the fish is accompanied by the person who took the fish. (See Transfer of Possession Form on page 47). **No person may possess fish which were not legally taken.**
- A person may possess only the limit of fish allowed for the water on which that person is fishing.
- Upon request by an employee of the department, or a peace officer of the state, a person must present for inspection any fish taken or possessed by the person in a sport fishery.
- Upon request by an employee of the department or a peace officer of the state, a person while taking fish must present, for inspection, any apparatus designed to be or capable of being used to take fish in a sport fishery.

**POSSESSION OF SPORT-CAUGHT HALIBUT**

- Pacific halibut fisheries are managed by the federal government under international treaty.
- Federal possession and landing requirements for sport-caught halibut differ from state regulations. Possession includes unpreserved AND preserved fish for halibut, but possession limits only apply in salt waters. Transfer of Possession forms, as mentioned in the previous section, are not valid for halibut.
- Consult federal regulations for: bag, size, and possession limits for guided (charter) anglers; possession and landing requirements.
- Federal halibut regulations are available from:  
NOAA Fisheries Alaska Region, (907) 586-7228  
<https://alaskafisheries.noaa.gov/fisheries/sport-halibut>

## General Regulations - *Fresh Water*

**The Fresh Water Fishing Season for all species is open year-round** (except for king salmon in the fresh waters between Cape Fairweather and the International Boundary at Dixon Entrance).

### **KING SALMON**

- **Yakutat Area (between Cape Suckling and Cape Fairweather)** (*see map on page 15*):
  - 20 inches or longer: 1 per day, 1 in possession.
  - Less than 20 inches: 10 per day, 10 in possession.
  - Nonresident anglers—Annual limit of 3 fish, 28 inches or greater in length, and a harvest record is required for nonresident anglers (*see page 6*). Check with the nearest ADF&G office for inseason changes.
- **Southeast Alaska (outside of the Yakutat Area):**  
**CLOSED**

### **COHO SALMON**

- **Between Cape Suckling and Cape Fairweather:**
  - 16 inches or longer: 4 per day, 8 in possession.
- **Between Cape Fairweather and Dixon Entrance:**
  - 16 inches or longer: 6 per day, 12 in possession.

### **CHUM, PINK, AND SOCKEYE (INCLUDING KOKANEE) SALMON**

- 16 inches or longer: 6 of each species per day, 12 of each species in possession.

### **COHO, CHUM, PINK, AND SOCKEYE (INCLUDING KOKANEE) SALMON (IN COMBINATION)**

- Less than 16 inches: 10 per day, 10 in possession.

### **STEELHEAD**

- 36 inches or longer: 1 per day, 2 in possession. 2 fish annual limit, harvest record required (*see page 6*).

### **CUTTHROAT AND RAINBOW TROUT (IN COMBINATION)**

- 11 inch minimum and 22 inch maximum: 2 per day, 2 in possession.

### **DOLLY VARDEN**

- No size limit: 10 per day, 10 in possession.

### **BROOK TROUT**

- No size limit: 10 per day, 10 in possession.

### **ARCTIC GRAYLING**

- No size limit: 10 per day, 10 in possession.

### **OTHER FISH SPECIES NOT LISTED ABOVE**

- No size limit, no bag or possession limit.



A couple young anglers with a nice catch. Take a kid fishing!

It is unlawful to operate a motorized or tracked vehicle, without a valid Fish Habitat permit, in or across waters where salmon, trout, Dolly Varden, Arctic char, sheefish or whitefish spawn, rear, or migrate Contact the ADF&G Habitat Division in Douglas (907) 465-4105 or Craig (907) 826-2560 for information.

## General Regulations - *Salt Water*

**The Salt Water Fishing Season for all species is open year-round**, except for halibut, lingcod, rockfish, Tanner crab, and resident king crab fisheries. **For Shellfish Regulations see pages 33-36.**

### **KING SALMON**

- 28 inches or longer—Bag, possession, annual and size limits are established by emergency order, as specified in the Southeast Alaska King Salmon Management Plan.
- Less than 28 inches—Retention prohibited.
- Nonresident anglers—A harvest record is required (*see page 6*). Anglers should check with the nearest ADF&G office for current bag, possession, annual and size limit regulations.
- **Charter operators and crew members may not retain king salmon while clients are on board the vessel.**

### **COHO, CHUM, PINK, AND SOCKEYE SALMON**

- 16 inches or longer: 6 of each species per day, 12 of each species in possession.

### **COHO, CHUM, PINK, AND SOCKEYE SALMON (IN COMBINATION)**

- Less than 16 inches: 10 per day, 10 in possession.

### **STEELHEAD**

- 36 inches or longer: 1 per day, 2 in possession. 2 fish annual limit, harvest record required (*see page 6*).

### **CUTTHROAT AND RAINBOW TROUT (IN COMBINATION)**

- 11 inch minimum and 22 inch maximum: 2 per day, 2 in possession.

### **DOLLY VARDEN**

- No size limit: 10 per day, 10 in possession.

### **SABLEFISH (BLACK COD)**

- Alaska residents: No size limit: 4 per day, 4 in possession.
- Nonresidents: No size limit: 4 per day, 4 in possession. 8 fish annual limit, harvest record required (*see page 6*).

### **SHARKS (EXCEPT SPINY DOGFISH)**

- No size limit: 1 per day, 1 in possession. 2 shark annual limit, harvest record required (*see page 6*).

### **SPINY DOGFISH**

- No size limit: 5 per day, 5 in possession, harvest record not required.

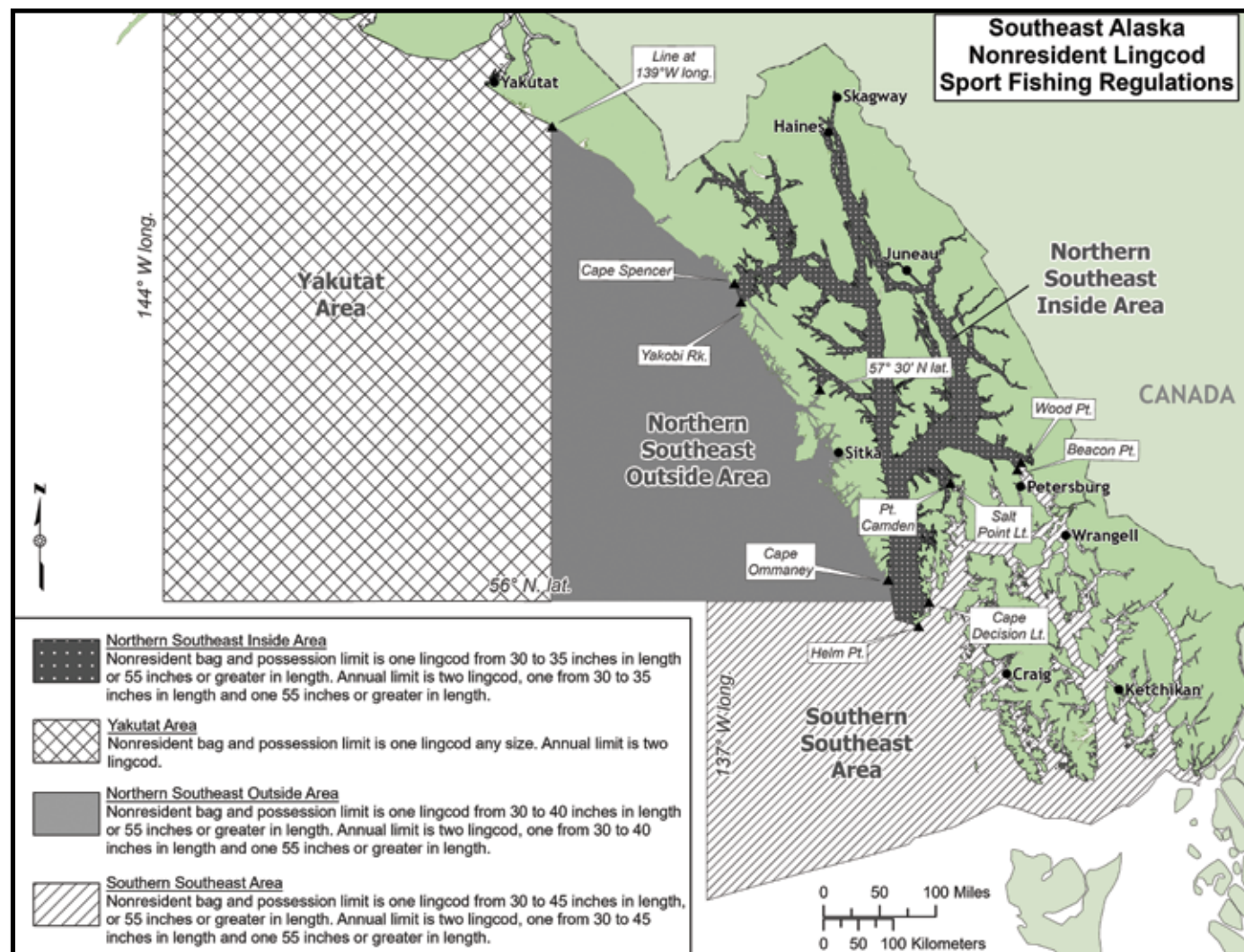


Make memories that will last a lifetime. Take a kid fishing!



## LINGCOD

- **Season:** May 16–November 30.
- **Charter operators and crew members may not retain lingcod while clients are on board the vessel.**
- **Yakutat Lingcod Area:**
  - *Alaska Residents*—No size limit: 1 per day, 2 in possession.
  - *Nonresidents*—No size limit: 1 per day, 1 in possession; annual limit of 2 fish, harvest record required (see page 6).
- **Northern Southeast Inside Lingcod Area:**
  - *Alaska Residents*—No size limit: 1 per day, 2 in possession.
  - *Nonresidents*—1 per day, 1 in possession; 30–35 inches or 55 inches and longer, annual limit of 2 fish, one of which is 30–35 inches in length, and one that is 55 inches or greater in length, harvest record required (see page 6).
- **Northern Southeast Outside Lingcod Area:**
  - *Alaska Residents*—No size limit: 1 per day, 2 in possession.
  - *Nonresidents*—1 per day, 1 in possession; 30–40 inches or 55 inches and longer, annual limit of 2 fish, one of which is 30–40 inches in length, and one that is 55 inches or greater in length, harvest record required (see page 6).



- **Southern Southeast Lingcod Area:**
  - *Alaska Residents*—No size limit: 1 per day, 2 in possession.
  - *Nonresidents*—1 per day, 1 in possession; 30–45 inches or 55 inches and longer, annual limit of 2 fish, one of which is 30–45 inches in length, and one that is 55 inches or greater in length, harvest record required (see page 6).

**HALIBUT**

- **January 1–January 31:** Closed to fishing for halibut.
- **Season:** February 1–December 31.
- **Unguided anglers**—No size limit: 2 per day, 4 in possession.
- Pacific halibut fisheries are managed by the federal government under international treaty.
- Federal possession and landing requirements for sport-caught halibut differ from state regulations. Possession includes unpreserved AND preserved fish for halibut.
- Proxy fishing for halibut is not allowed.
- No person shall possess on board a vessel, including charter vessels and pleasure craft used for fishing, Pacific halibut that have been filleted, mutilated, or otherwise disfigured in any manner, except that each Pacific halibut may be cut into no more than 2 ventral pieces, 2 dorsal pieces, and 2 cheek pieces, with a patch of skin on each piece, naturally attached.
- Consult federal regulations for the following: bag, size, and possession limits for guided (charter) anglers; possession and landing requirements, and inseason changes to the regulations.
- Federal halibut regulations are available from:

NOAA Fisheries Alaska Region, (907) 586-7228,  
<http://www.fakr.noaa.gov/sustainablefisheries/halibut/sport.htm>

**ALL ROCKFISH**

- All vessels must have at least one functional deepwater release mechanism on board and readily available for use when sport fishing activities are taking place regardless of species targeted.
- All rockfish not retained must be released at the depth they were caught or 100 feet, whichever is shallower.
- Upon request, a deepwater release mechanism must be presented to a local representative of the department or a peace officer of the state.

**PELAGIC ROCKFISH**

- Pelagic rockfish include Black, Blue, Dark, Dusky, Widow, and Yellowtail. These six species are uniformly gray, green, brown or black (*see page 38*). All rockfish not listed as pelagic are considered nonpelagic.
  - No size limit: 5 per day, 10 in possession.

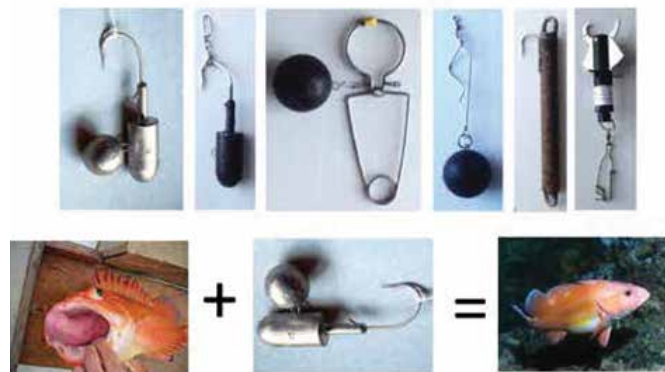
**NONPELAGIC ROCKFISH (DEMERSAL SHELF AND SLOPE ROCKFISH)**

(All Southeast Waters)

- Demersal Shelf Rockfish (DSR):
  - **RETENTION OF DEMERSAL SHELF ROCKFISH IS PROHIBITED.**
  - Demersal Shelf rockfish include Canary, China, Copper, Quillback, Rosethorn, Tiger and Yelloweye (*see pages 38 and 39*).
- Slope Nonpelagic Rockfish:
  - No size limit: 1 per day, 1 in possession.
  - Slope rockfish include: Blackgill, Blackspotted, Bocaccio, Brown, Chilipepper, Darkblotched, Greenstriped, Harlequin, Northern, Pacific Ocean Perch, Puget Sound, Pygmy, Redstripe, Redbanded, Rougheye, Sharpchin, Shortbelly, Shortraker, Silvergray, Splitnose, Stripetail, Vermilion, and Yellowmouth (*see pages 38 and 39*).
- **Charter operators and crew members may not retain nonpelagic rockfish while clients are on board the vessel.**

**OTHER FISH SPECIES NOT LISTED ON PAGES 10-12**

- No bag or possession limit, no size limit.

**Examples of Rockfish Release Devices**

For further information see page 39 or visit:  
[www.adfg.alaska.gov/rockfish](http://www.adfg.alaska.gov/rockfish)

# SOUTHEAST ALASKA WATERS INDEX

## **YAKUTAT AREA**

### **Fresh Water Special Regulations**

All Yakutat Road System Streams.....	15
Situk-Ahrnklin Estuary .....	15
Antlen River drainage (Pike Lakes).....	15
Lost River drainage.....	15
Lost River.....	15
Ophir Creek.....	15
Tawah Creek .....	15
Situk River drainage .....	16
Yakutat Bay streams, Ocean Cape to Pt. LaTouche.....	16

### **Salt Water Special Regulations**

Ankau Lagoon .....	16
Village Lagoon .....	16
Yakutat Area Lingcod .....	16

## **HAINES AREA**

### **Fresh Water Special Regulations**

Chilkat River drainage .....	17
Mosquito Lake .....	17
Chilkat Lake.....	17
Chilkoot River drainage.....	18
Herman Lake.....	18
One Mile Creek.....	18
Sawmill Creek drainage.....	18
Walker Lake .....	18

### **Salt Water Special Regulations**

Chilkat Inlet .....	18
---------------------	----

## **SKAGWAY AREA**

### **Fresh Water Special Regulations**

Lost Lake .....	18
Pullen Creek (above Second Ave.).....	18
Taiya Inlet drainages.....	18

## **JUNEAU AREA**

### **Fresh Water Special Regulations**

Annex Lake.....	19
Antler Lake .....	19
Distin Lake .....	19
Dorothy Lake .....	19
Florence Lake.....	19
Hasselborg Lake .....	19
Jims Lake (Admiralty Island) .....	20
Kook Lake (Chichagof Island) .....	20
Lake Alexander (Admiralty Island) .....	20
Lake Guerin (Admiralty Island) .....	20
Shelter Lake .....	20
Turner Lake .....	20
Young Lake .....	20

### **Juneau Area Road System drainages**

Auke Lake drainage .....	21
Auke Creek mouth .....	21
Auke Nu drainage .....	21
Bear Creek (Douglas Island).....	21
Cowee Creek.....	21
Duck Creek .....	21
Fish Creek Pond.....	21
Glacier Lake .....	21
Herbert River .....	22
Jordan Creek .....	22
Kowee Creek (Douglas Island).....	22
McGinnis Creek .....	22
Mendenhall Lake .....	22
Montana Creek.....	22
Moraine Lake .....	22
Peterson Creek Salt Chuck (Salt Lake).....	22
Salmon Creek Reservoir .....	22
Steep Creek .....	22
Switzer Creek.....	22
Twin Lakes.....	22
Vanderbilt Creek .....	22
Waydelich Creek (Wadleigh Creek).....	22
Windfall Lake drainage.....	22

### **Salt Water Special Regulations**

All salt waters adjacent to the Juneau road system .....	22
Auke Bay .....	22
Chatham Strait and Lower Lynn Canal .....	22
Gastineau Channel -Wayside Park Fishing Dock .....	22
Salt Lake .....	22

## **SITKA AREA**

### **Fresh Water Special Regulations**

Baranof Lake.....	23
Beaver Lake .....	23
Buck Lake .....	23
Deep Lake .....	23
Green Lake.....	23
Heart Lake.....	23
Indian River .....	23
Lake 436.....	23
Lake Eva .....	23
Little Lake Eva.....	23
Long Lake .....	24
Port Banks Creek .....	24
Redoubt Lake drainage .....	24
Salmon Lake .....	24
Sitka Sound Special Use Area - tributaries .....	24
Sitkoh Lake .....	24
Starrigavan Creek.....	24
Sukoi Lake .....	24
Thimbleberry Lake.....	24
Wrinkleneck Creek (main inlet to Swan Lake).....	24

### **Salt Water Special Regulations**

Bear Cove (in Silver Bay).....	24
Cape Edgecumbe (The Pinnacles) .....	24
Chatham Strait .....	24
Redoubt Bay .....	24
Mist Cove.....	24
Kasnyku Bay.....	24
Sitka Sound Special Use Area .....	25



**PETERSBURG AREA**

<b>Fresh Water Special Regulations</b>	<b>Page</b>
Blind Slough .....	26
Blind Slough tributaries,including Manmade Hole .....	26
Castle River.....	26
Crystal Lake.....	26
Hamilton Creek.....	26
Kah Sheets Lake .....	27
Kane Peak Lake .....	27

**WRANGELL AREA**

<b>Fresh Water Special Regulations</b>	<b>Page</b>
Anan Lake.....	27
Eagle Lake .....	27
Long Lake.....	27
Pats Lake.....	27
Thoms Lake .....	27
Tyee Lake.....	27
Virginia Lake.....	27

**PRINCE OF WALES ISLAND AREA**

<b>Fresh Water Special Regulations</b>	<b>Page</b>
108 Creek.....	28
Control Lake drainage.....	28
Dog Salmon Creek.....	28
Eagle Creek.....	28
Hunter Bay Creek .....	28
Hatchery Creek .....	28
Karta River drainage.....	28
Karta Lake.....	28
Kegan Lake.....	28
Klakas Creek.....	28
Klawock River drainage .....	28
Luck Lake (including Eagle Creek).....	29
Marge Lake .....	29
Mellen Lake .....	29
Noname Lake.....	29
Old Franks Creek .....	29
Red Bay Lake.....	29
Salmon Bay Lake.....	29

**POW Area Continued...**

	<b>Page</b>
Salmon Bay Lake drainage .....	29
Salmon Lake (Karta River).....	28
Sarkar Lake .....	29
Sarkar River drainage .....	29
Shinaku Lake .....	29
Staney Creek .....	29
Summit Lake .....	29
Sweetwater Lake drainage.....	29
Thorne River drainage including Control Lake drainage.....	29

**Salt Water Special Regulations**

Klawock Harbor.....	29
Twelve-Mile Arm.....	29

**KETCHIKAN AREA**

<b>Fresh Water Special Regulations</b>	<b>Page</b>
Bakewell Lake .....	30
Big Goat Lake.....	30
Bugge Lake .....	30
Claude Lake .....	30
Ella Lake drainage .....	30
Ella Lake .....	30
Fish Creek .....	30
Gokachin (Sealevel) Creek .....	30
Grace Lake.....	30
Half-Moon Lake.....	30
Heckman Lake .....	31
Humpback Lake drainage .....	31
Humpback Lake .....	31
Jordan Lake .....	31
Little Goat Lake .....	31
Mahoney Lake drainage.....	31
Mahoney Creek .....	31
Mahoney Lake .....	31
Upper Mahoney Lake .....	31
Manzanita Lake.....	31
Manzoni Lake .....	31
McDonald Lake drainage.....	31
McDonald Lake .....	31
Minne Lake .....	31

**Ketchikan Area Continued...**

	<b>Page</b>
Naha River drainage .....	31
Patching Lake.....	31
Nellie Lake.....	31
Nooya Lake.....	31
Orchard Lake .....	31
Orton Lake .....	31
Reflection Lake .....	31
Shelokum Lake .....	31
Spit Creek.....	31
Steelhead Creek .....	31
Wilson Lake .....	31
<b>Ketchikan Road System</b> .....	32
Carlanna Creek.....	32
Carlanna Lake .....	32
City Park Ponds (Ketchikan Creek).....	32
Harriet Hunt Lake .....	32
Herring Cove Creek .....	32
Ketchikan Creek.....	32
Ketchikan Lake .....	32
Schoenbar Creek .....	32
Ward Creek drainage.....	32
Whitman Lake.....	32

**Salt Water Special Regulations**

Behm Canal (north).....	32
Behm Canal (south) .....	32
Naha Bay area .....	32
Neets Bay .....	32
Thomas Basin.....	32

**Hyder Area Fresh Water Special Regulations**

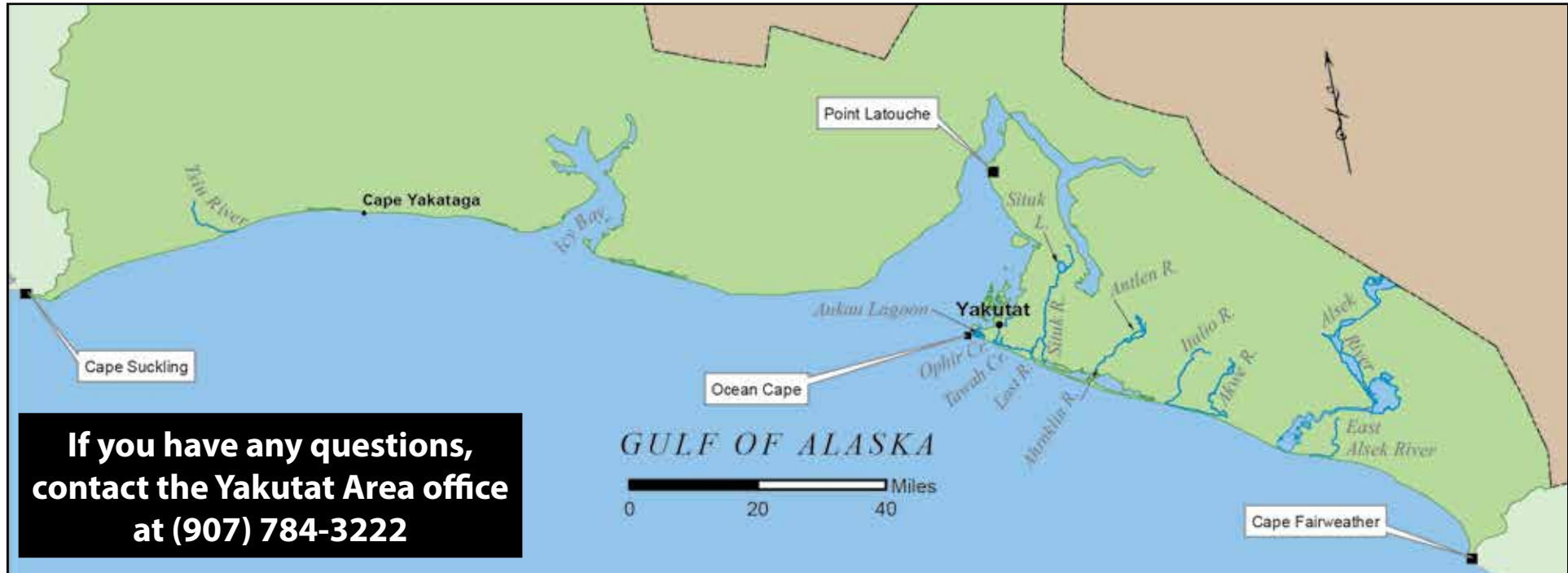
Fish Creek .....	32
Marx Creek .....	32

*Get the latest fishing info emailed to you.*

Sign up at: [www.wefishak.alaska.gov](http://www.wefishak.alaska.gov)

Fishing Reports  Advisory Announcements  Emergency Orders

## YAKUTAT MANAGEMENT AREA - SPECIAL REGULATIONS



**If you have any questions,  
contact the Yakutat Area office  
at (907) 784-3222**

### Special Regulations - Fresh Water

**The following regulations apply to all drainages crossed by the Yakutat road system and all streams draining into the Yakutat Bay between Ocean Cape and Point Latouche:**

- Only unbaited, artificial lures or flies may be used year-round. The use of bait is prohibited.
- Coho salmon limits:
  - 16 inches or longer: 2 per day, 2 in possession.

**SITUK-AHRNKLIN ESTUARY**—all waters flowing into the Situk-Ahrnklin Estuary:

- Sockeye salmon limits:
  - 3 per day, 6 in possession.

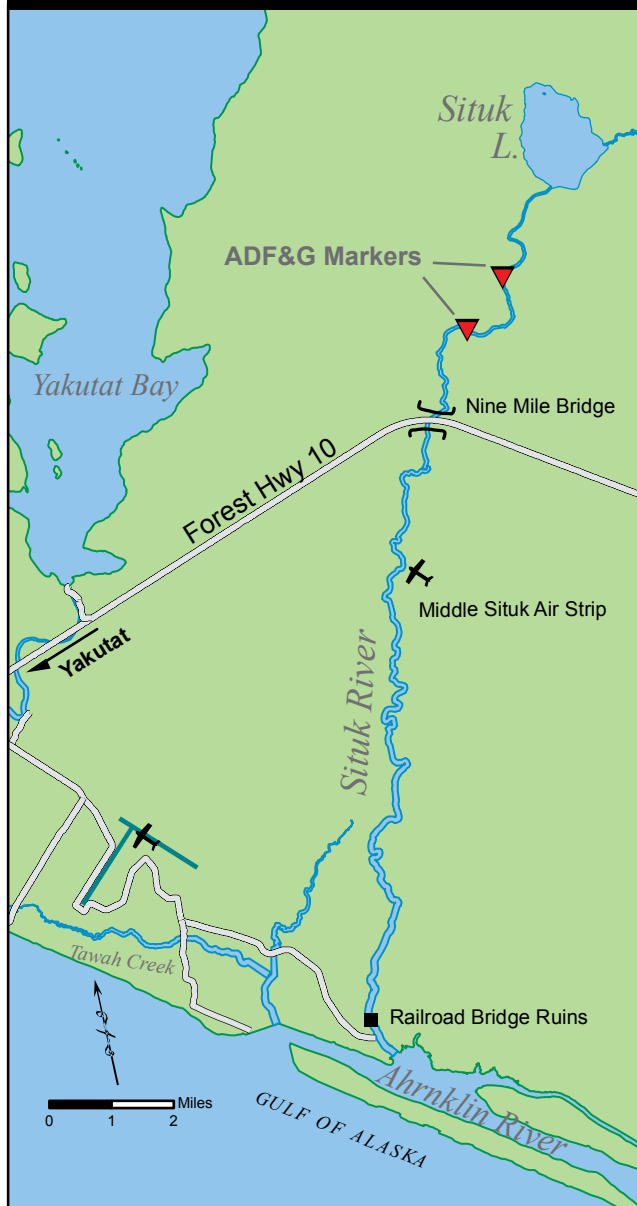
**ANTLEN RIVER DRAINAGE** (including Pike Lakes)—upstream of the Forest Highway 10:

- **Northern pike retention prohibited.** Any northern pike caught must be released immediately.

**LOST RIVER DRAINAGE** (unless specified below):

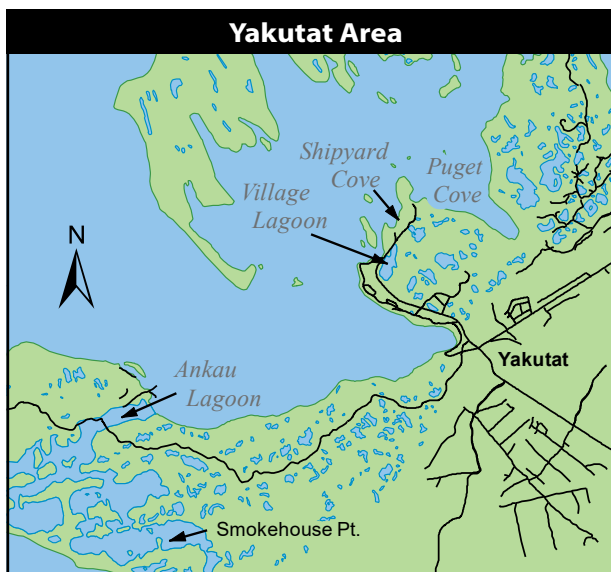
- Only unbaited, artificial lures or flies may be used year-round. The use of bait is prohibited.
- Coho salmon limits:
  - 16 inches or longer: 2 per day, 2 in possession.
- **Lost River**—Upstream from the Lost River bridge:
  - The fishing season is open January 1–August 14.
- **Ophir Creek**—upstream from the Yakutat Airport highway Ophir Creek bridge:
  - **Closed year-round to sport fishing.**
- **Tawah Creek**—within 50 yards of the R.E.L (Cannon Beach Road) bridge:
  - The fishing season is open October 1–June 15.

## Situk River



### SITUK RIVER DRAINAGE (unless specified below):

- Single hooks only allowed. Up to two single hooks per line may be used.
- Only unbaited, artificial lures or flies may be used year-round. The use of bait is prohibited.
- Coho salmon limits:
  - 16 inches or longer: 2 per day, 2 in possession.
- **Situk River from its mouth to the railroad bridge ruins:**
  - The fishing season is open October 15–June 14, except anglers 60 years of age or older may fish this section of river year-round.
- **Upstream from the Middle Situk air strip:**
  - The fishing season for king salmon is open September 1–June 30.
- **Upstream from the ADF&G Markers located 2 miles upstream from the Situk River Nine Mile Bridge to ADF&G markers 2 miles downstream from Situk Lake:**
  - The fishing season is open May 16–April 14.



## Special Regulations - Salt Water

### YAKUTAT MANAGEMENT AREA:

All waters between the longitude of Cape Suckling (144° W Long.), and a line projected SW (225°) seaward from the westernmost tip of Cape Fairweather (58° 47.89' N. Lat. and 137° 56.68' W. Long).

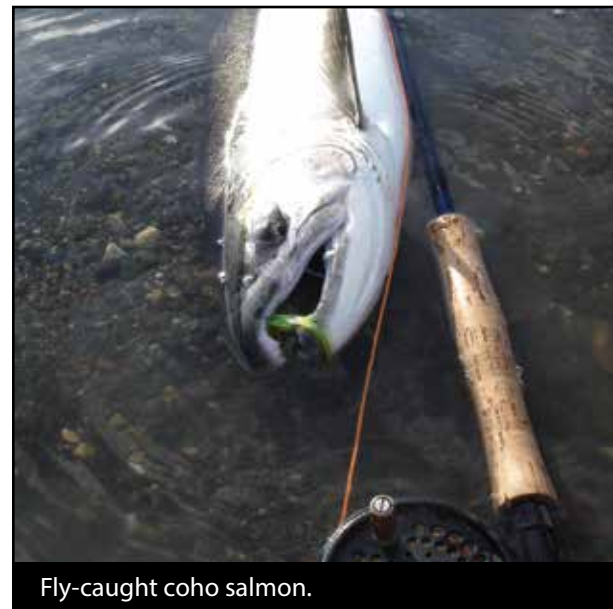
- Closed to sport fishing for Dungeness Crab.

### ANKAU LAGOON:

- Coho salmon limits:
  - 16 inches or longer: 2 per day, 2 in possession.
- **All salt waters of Ankau Lagoon**—east of a line from Smokehouse Pt. north to the mainland:
  - The fishing season is open October 1–August 14.

### VILLAGE LAGOON:

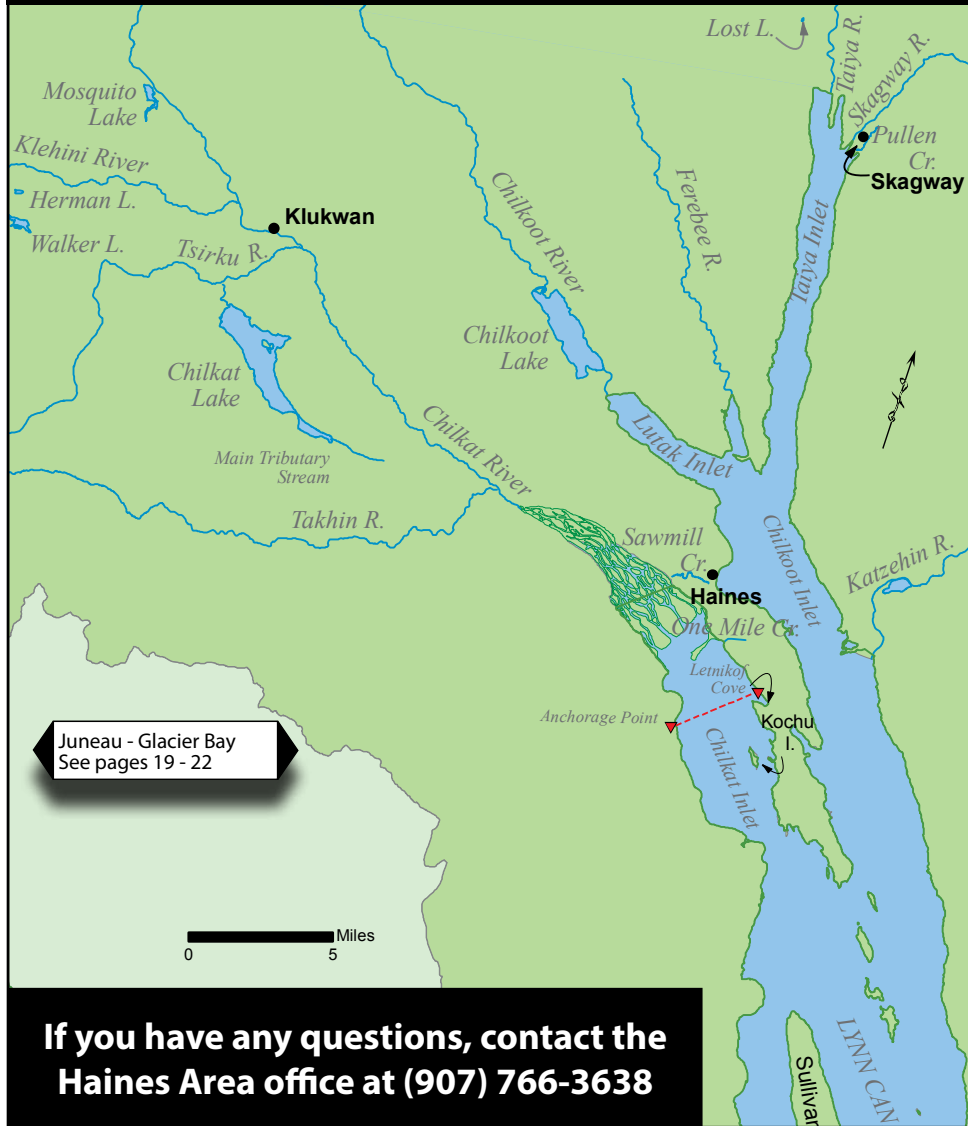
- Coho salmon limits:
  - 16 inches or longer: 2 per day, 2 in possession.



Fly-caught coho salmon.



## Haines/Skagway Area



**If you have any questions, contact the  
Haines Area office at (907) 766-3638**



Fishing for coho salmon on the Chilkat River.

### Fresh Water Special Regulations - Haines/Skagway

#### **CHILKAT RIVER DRAINAGE** (unless specified below):

- The use of bait is allowed year-round.
- Coho salmon limits: 16 inches or longer: 3 per day, 6 in possession.
- **Mosquito Lake:**
  - Only unbaited, artificial lures or flies may be used year-round. The use of bait is prohibited.
  - Cutthroat and rainbow trout limits (in combination): 2 per day, 2 in possession, 14 inch minimum and 22 inch maximum size limit.
- **Mosquito Lake inlet and outlet streams down to the confluence with Chilkat River:**
  - The use of bait is allowed September 15–November 15.
- **Chilkat Lake:**
  - Only unbaited, artificial lures or flies may be used year-round. The use of bait is prohibited.
  - Cutthroat and rainbow trout limits (in combination): 2 per day, 2 in possession, 14 inch minimum and 22 inch maximum size limit.
  - **Chilkat Lake inlet and outlet streams down to the confluence with the Tsirku River:**
    - The use of bait is allowed September 15–November 15.
  - **Chilkat Lake's tributary stream (located at the southeast end of the lake):**
    - The use of bait is allowed September 15–November 15.
    - Fishing season is open July 1–March 31.

...continued

## **HERMAN LAKE:**

- The use of bait is allowed year-round.

## **WALKER LAKE:**

- The use of bait is allowed year-round.

## **SAWMILL CREEK and its tributaries:**

- Fishing season is open July 1–March 31.

## **ONE MILE CREEK (Mud Bay Road):**

- Fishing season is open July 1–March 31.

## **CHILKOOT RIVER DRAINAGE:**

- **Chilkoot Lake inlet streams**—including upper Chilkoot River:
  - **Closed to salmon fishing.** All salmon caught must be released immediately.
  - The use of bait is allowed year-round.
  - Dolly Varden limits: 4 per day, 4 in possession, no size limit.
- **Chilkoot Lake and Chilkoot River below lake:**
  - The use of bait is allowed year-round.
  - Chum, pink, and sockeye salmon limits:
    - 16 inches or longer: 6 of each species per day, 6 of each species in possession.
  - Coho salmon limits:
    - 16 inches or longer: 2 per day, 2 in possession.
  - Dolly Varden limits: 4 per day, 4 in possession, no size limit.

## **Salt Water Special Regulations** - Haines

**CHILKAT INLET**—in all salt waters north of a line from an ADF&G marker 1 mile south of Anchorage Point to an ADF&G marker directly north of the Letnikof Cove boat ramp:

- **Closed to king salmon fishing April 15–July 15.** Any king salmon caught from April 15–July 15 must be released immediately.
- Please check with the nearest ADF&G office for current regulations. Phone numbers listed on the back of this publication.

## **Fresh Water Special Regulations** - Skagway Area

### **LOST LAKE:**

- The use of bait is allowed year-round.
- Rainbow trout limits: 2 per day 2 in possession, 9 inches or longer.

### **PULLEN CREEK (above Second Ave.):**

- Fishing season is open December 1–September 14.

**TAIYA INLET DRAINAGES**—all waters flowing into Taiya Inlet including lakes:

- The use of bait is allowed year-round.

*Get the latest fishing info emailed to you.*

Sign up at: [www.wefishak.alaska.gov](http://www.wefishak.alaska.gov)

Fishing Reports 🐟 Advisory Announcements 🐟 Emergency Orders



An angler casts a line on the Tahini River.

# JUNEAU/GLACIER BAY MANAGEMENT AREA - SPECIAL REGULATIONS

## Fresh Water Special Regulations - Juneau Area

### **ANNEX LAKE** (see map on page 20):

- The use of bait is allowed year-round.
- Cutthroat and rainbow trout limits (in combination): 2 per day, 2 in possession, 14 inch minimum and 22 inch maximum.

### **ANTLER LAKE** (see map on page 21):

- The use of bait is allowed year-round.
- Cutthroat and rainbow trout limits (in combination): 2 per day, 2 in possession, 14 inch minimum and 22 inch maximum.

### **DISTIN LAKE** (Admiralty Island):

- Only unbaited, artificial lures or flies may be used year-round. The use of bait is prohibited.
- Cutthroat trout limits: 1 per day, 1 in possession, 25 inch minimum.

### **DOROTHY LAKE** (see map on page 20):

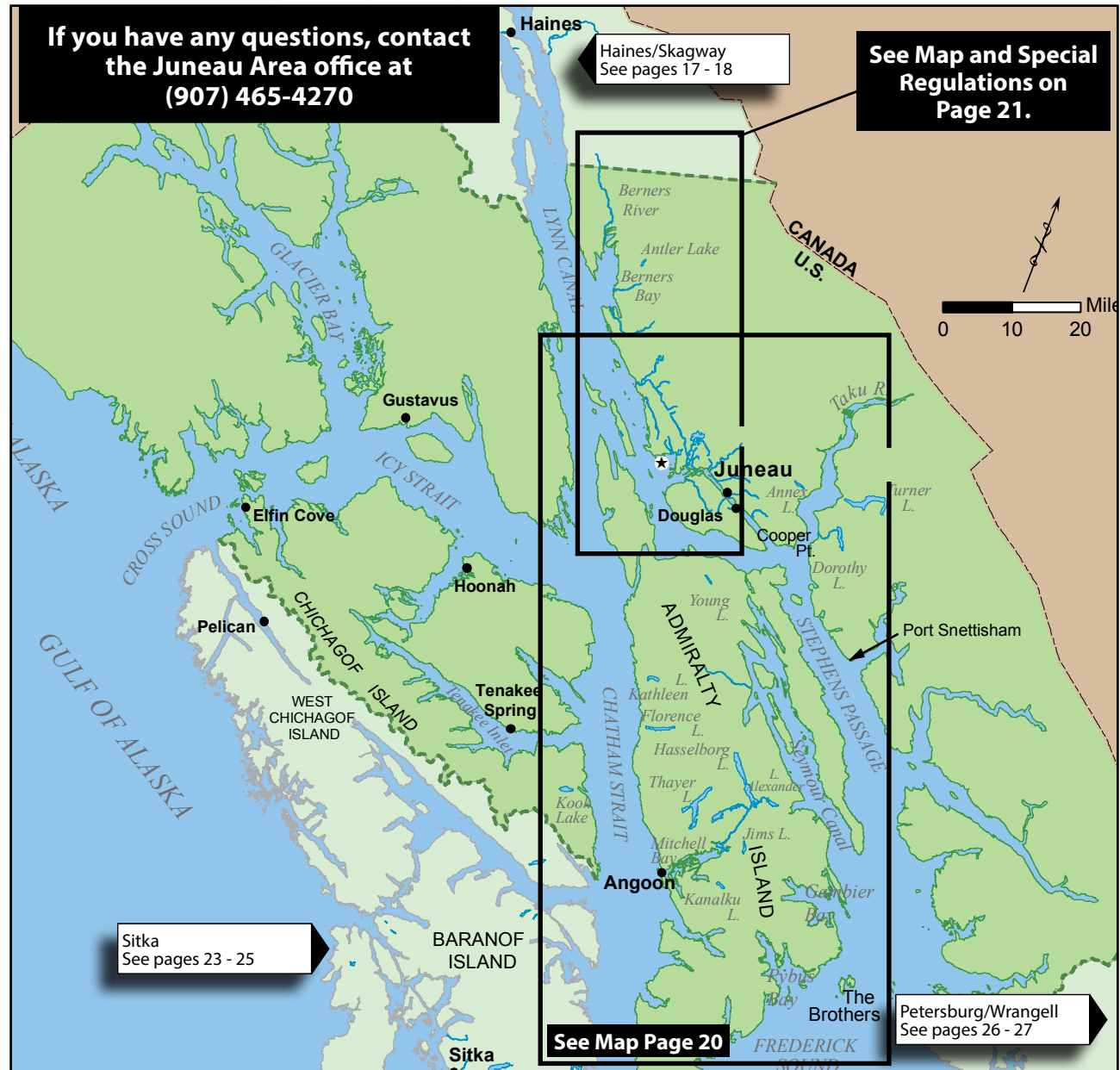
- The use of bait is allowed year-round.
- Cutthroat trout limits: 2 per day, 2 in possession, 14 inch minimum and 22 inch maximum.

### **FLORENCE LAKE** (Admiralty Island):

- The use of bait is allowed year-round.
- Cutthroat and rainbow trout limits (in combination): 5 per day, 10 in possession, no size limit.

### **HASSELBORG LAKE** (Admiralty Island):

- Only unbaited, artificial lures or flies may be used year-round. The use of bait is prohibited.
- Cutthroat trout limits: 1 per day, 1 in possession, 25 inch minimum.





## Fresh Water Special Regulations - Juneau Area (continued)

### **JIMS LAKE** (Admiralty Island):

- Only unbaited, artificial lures or flies may be used year-round. The use of bait is prohibited.
- Cutthroat trout limits: 1 per day, 1 in possession, 25 inch minimum.

### **KOOK LAKE** (Chichagof Island):

- Only unbaited, artificial lures or flies may be used year-round. The use of bait is prohibited.
- Cutthroat and rainbow trout limits (in combination): 2 per day, 2 in possession, 14 inch minimum and 22 inch maximum.

### **LAKE ALEXANDER** (Admiralty Island):

- Only unbaited, artificial lures or flies may be used year-round. The use of bait is prohibited.
- Cutthroat and rainbow trout limits (in combination): 2 per day, 2 in possession, 14 inch minimum and 22 inch maximum.

### **LAKE GUERIN** (Admiralty Island):

- Only unbaited, artificial lures or flies may be used year-round. The use of bait is prohibited.
- Cutthroat trout limits: 1 per day, 1 in possession, 25 inch minimum.

### **SHELTER LAKE** (see map on page 21):

- Only unbaited, artificial lures or flies may be used year-round. The use of bait is prohibited.
- Cutthroat and rainbow trout limits (in combination): 2 per day, 2 in possession, 9 inch minimum.

### **TURNER LAKE** (see map at right):

- Only unbaited, artificial lures or flies may be used year-round. The use of bait is prohibited.
- Cutthroat trout retention prohibited. All cutthroat trout caught must be released immediately.

### **YOUNG LAKE** (Admiralty Island):

- Only unbaited, artificial lures or flies may be used year-round. The use of bait is prohibited.
- Cutthroat and rainbow trout limits (in combination): 2 per day, 2 in possession, 14 inch minimum and 22 inch maximum.

Scan QR code to go to Juneau area emergency orders and Advisory Announcements



## Admiralty Island



## Fresh Water Special Regulations - Juneau Area - Road System

### ALL JUNEAU AREA ROAD SYSTEM DRAINAGES:

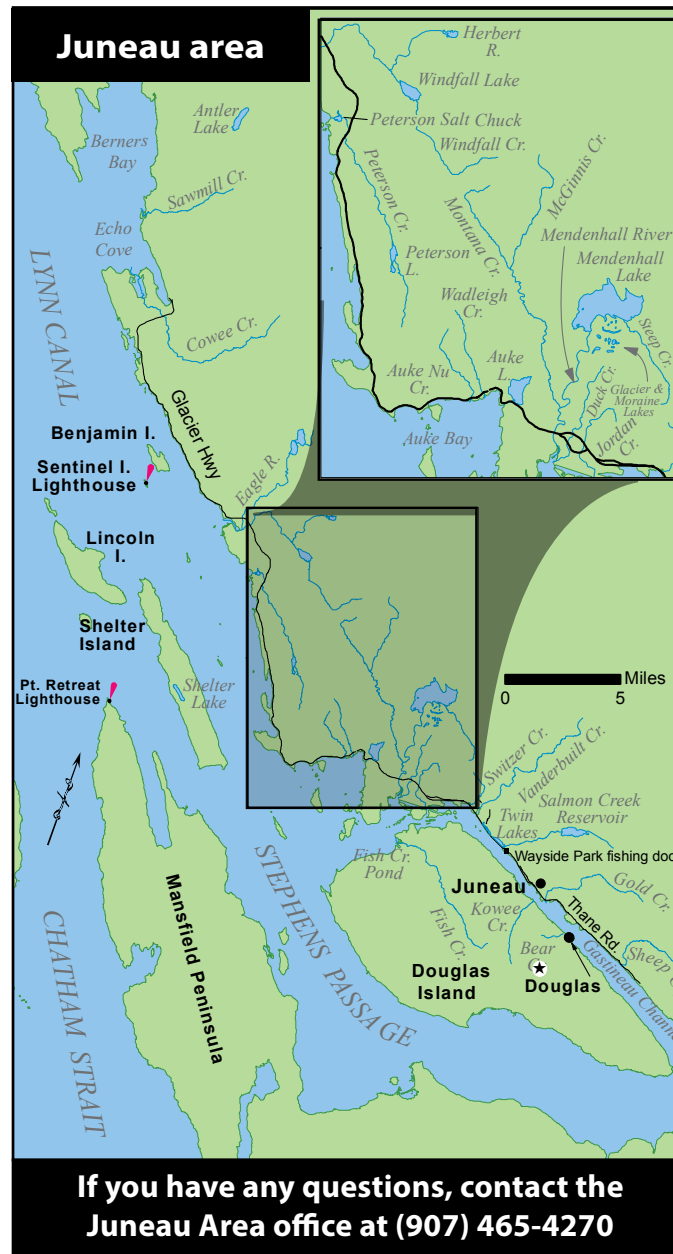
- Unless otherwise specified in this section, the following regulations apply to all drainages crossed by the Juneau road system.
  - King salmon limits: 4 per day 4 in possession, no size limit. Annual limit does not apply.
  - Coho salmon limits:
    - 16 inches or longer: 2 per day, 2 in possession.
  - Sockeye salmon limits:
    - 16 inches or longer: 1 per day, 1 in possession.
  - Cutthroat and rainbow trout limits (in combination): 2 per day, 2 in possession, 14 inch minimum and 22 inch maximum.
  - Dolly Varden limits: 2 per day, 2 in possession, no size limit.
  - Steelhead: Catch and release fishing only; all steelhead caught must be released immediately.

### AUKE LAKE DRAINAGE:

- Auke Lake drainage downstream of Glacier Highway to ADF&G stream mouth markers:**
  - Closed to sport fishing.**

Note: ADF&G stream mouth markers are located 300 feet downstream of the Auke Creek weir.

- Auke Lake drainage upstream of Glacier Hwy.** (including Auke Lake and its inlet streams and Auke Creek):
  - Closed to sockeye salmon and Dolly Varden fishing.** All sockeye salmon and Dolly Varden caught must be released immediately.
  - Only unbaited, artificial lures or flies may be used year-round. The use of bait is prohibited.
  - See drainages crossed by the Juneau road system above for salmon and trout limits.



**AUKE CREEK MOUTH**—All waters within a 200-yard radius that extends seaward of the ADF&G stream mouth markers:

- Snagging or attempting to snag is prohibited.** Any fish hooked elsewhere than its mouth must be released immediately.
- Closed to sockeye salmon fishing.** All sockeye salmon caught must be released immediately.
- Auke Bay:** See salt water exceptions on page 22.

### AUKE NU DRAINAGE:

- Closed to salmon fishing.** All salmon caught must be released immediately.

### BEAR CREEK (Douglas Island):

- Closed to sport fishing.**

### COWEE CREEK:

- Only unbaited, artificial lures or flies may be used year-round. The use of bait is prohibited except:
  - Anglers under 16 years of age may use bait from September 15 through November 15.

### DUCK CREEK:

- Closed to sport fishing.**

### FISH CREEK POND ONLY (Douglas Island):

- June 1–August 31:
  - Use of bait, weighted hooks and lures, multiple (treble) hooks with a gap between point and shank larger than ½ inch are allowed.
- King salmon limits:
  - 4 per day, 4 in possession, no size limit. Nonresident annual limit does not apply.
  - King salmon hooked elsewhere than in the mouth (snagged) may be retained.

### GLACIER LAKE (Dredge Lakes area):

- Only unbaited, artificial lures or flies may be used year-round. The use of bait is prohibited.

## Fresh Water Special Regulations - Juneau Area - Road System (continued)

**HERBERT RIVER:** See Windfall Lake drainage.

### JORDAN CREEK:

- **Closed to sport fishing.**

### KOWEE CREEK (Douglas Island):

- **Closed to salmon fishing.** All salmon caught must be released immediately.

### MCGINNIS CREEK:

- Only unbaited, artificial lures or flies may be used year-round. The use of bait is prohibited.

### MENDENHALL LAKE:

- **Closed to Dolly Varden fishing.** All Dolly Varden caught must be released immediately.
- Only unbaited, artificial lures or flies may be used year-round. The use of bait is prohibited.

### MONTANA CREEK:

- Only unbaited, artificial lures or flies may be used year-round. The use of bait is prohibited.

### MORAINE LAKE (Dredge Lakes area):

- Only unbaited, artificial lures or flies may be used year-round. The use of bait is prohibited.

### PETERSON CREEK SALT CHUCK:

- Only unbaited, artificial lures or flies may be used year-round. The use of bait is prohibited.

### SALMON CREEK RESERVOIR:

- The use of bait is allowed year-round.

### STEEP CREEK:

- **Closed to sport fishing.**

## SWITZER CREEK:

- **Closed to sport fishing.**

## TWIN LAKES:

- The use of bait is allowed year-round.
- Chum, coho, king, pink, and sockeye salmon limits (in combination): 16 inches or less: 10 per day, 10 in possession.
- Cutthroat and rainbow trout limits (in combination): 5 per day, 5 in possession, no size limit.

## VANDERBILT CREEK:

- **Closed to sport fishing.**

## WAYDELICH CREEK (Wadleigh Creek):

- **Closed to salmon fishing.** All salmon caught must be released immediately.

## WINDFALL LAKE DRAINAGE:

- **Herbert River**—in the section of Herbert River within 100 yards of its confluence with Windfall Creek:
  - Windfall Creek regulations listed below apply.
- **Windfall Creek**—from the outlet of Windfall Lake to the confluence of Herbert River:
  - **Closed to sport fishing, June 1–July 31**, except;
  - Sport fishing is allowed during the month of June on Wednesdays and Saturdays.
  - During these days, the **sockeye salmon limit** is 1 per day, 1 in possession, 16 inches or longer.
- **Windfall Lake and all inlet streams:**
  - Only unbaited, artificial lures or flies may be used year-round. The use of bait is prohibited.
  - Sockeye salmon retention prohibited. All sockeye salmon caught must be released immediately.

## Salt Water Special Regulations - Juneau Area - Road System

### ALL SALT WATERS ADJACENT TO THE JUNEAU ROAD SYSTEM—*all salt waters adjacent to the Juneau City and Borough road system to a line ¼ mile offshore:*

- Cutthroat and rainbow trout limits (in combination): 2 per day, 2 in possession, 14 inch minimum and 22 inch maximum size limit.
- Dolly Varden limits: 2 per day, 2 in possession, no size limit.

### AUKE BAY—in all waters of Auke Bay east of a line from Waydelich (Wadleigh) Creek to an ADF&G marker located ¼ mile south of the mouth of Auke Creek:

- **Closed to sockeye salmon fishing.** All sockeye salmon caught must be released immediately.
- **Closed to Dolly Varden fishing April 1–May 31.** All Dolly Varden caught from April 1–May 31 must be released immediately.

### GASTINEAU CHANNEL—*Wayside Park fishing dock—in the waters of Gastineau Channel within 150 feet of the City and Borough of Juneau's Gastineau Channel Wayside Park fishing dock located near the Macaulay Salmon Hatchery:*

- Snagging or attempting to snag is prohibited; a fish hooked anywhere other than in the mouth must be released immediately.

### SALT LAKE (See map on page 20)—*at the head of Mitchell Bay on Admiralty Island:*

- Coho salmon limits:
  - 16 inches or longer: 6 per day, 6 in possession.

*Get the latest fishing info emailed to you.*

Sign up at: [www.wefishak.alaska.gov](http://www.wefishak.alaska.gov)

Fishing Reports  Advisory Announcements  Emergency Orders



## Fresh Water Special Regulations - Sitka Area

### BARANOF LAKE:

- Only unbaited, artificial lures or flies may be used year-round. The use of bait is prohibited.
- Cutthroat and rainbow trout limits (in combination): 2 per day, 2 in possession, 14 inch minimum and 22 inch maximum.

### BEAVER LAKE:

- The use of bait is allowed year-round.

### BUCK LAKE:

- Only unbaited, artificial lures or flies may be used year-round. The use of bait is prohibited.
- Cutthroat and rainbow trout limits (in combination): 2 per day, 2 in possession, 9 inch minimum and 22 inch maximum.

### DEEP LAKE:

- The use of bait is allowed year-round.

### GREEN LAKE:

- The use of bait is allowed year-round.

### HEART LAKE:

- The use of bait is allowed year-round.

### INDIAN RIVER:

- Upstream of the Sawmill Creek Bridge:
  - **Closed to chum, coho, and sockeye salmon fishing.** All chum, coho, and sockeye salmon caught must be released immediately.
  - Pink salmon limits:
    - 16 inches or longer: 6 per day, 12 in possession.
  - King salmon limits: See **Sitka Sound Special Use Area-tributaries** on page 25.

### INDIAN RIVER:

- Downstream of the Sawmill Creek Bridge:
  - **Closed to chum, coho, pink, and sockeye salmon fishing.** All chum, coho, pink, and sockeye salmon caught must be released immediately.
  - King salmon limits: See **Sitka Sound Special Use Area-tributaries** on page 25.

### LAKE 436:

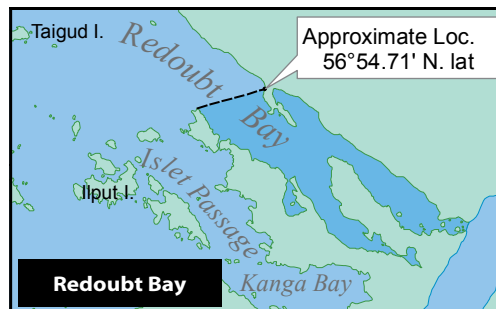
- Only unbaited, artificial lures or flies may be used year-round. The use of bait is prohibited.
- Cutthroat and rainbow trout limits (in combination): 2 per day, 2 in possession, 9 inch minimum and 22 inch maximum.

### LAKE EVA:

- Only unbaited, artificial lures or flies may be used year-round. The use of bait is prohibited.
- Cutthroat and rainbow trout limits (in combination): 2 per day, 2 in possession, 14 inch minimum and 22 inch maximum.

### LITTLE LAKE EVA:

- Only unbaited, artificial lures or flies may be used year-round. The use of bait is prohibited.
- Cutthroat and rainbow trout limits (in combination): 2 per day, 2 in possession, 14 inch minimum and 22 inch maximum.



## Baranof Island

If you have any questions,  
contact the Sitka Area office at  
(907) 747-5355



## Fresh Water Special Regulations - Sitka Area (continued)

### LONG LAKE:

- The use of bait is allowed year-round.

### PORT BANKS CREEK—outlet stream of Plotnikof Lake (fall steelhead drainage):

- Only unbaited, artificial lures or flies may be used year-round. The use of bait is prohibited.
- Steelhead: Catch and release fishing only, all steelhead caught must be released immediately.

### REDOUBT LAKE DRAINAGE:

- Sockeye salmon limits:
  - 16 inches or longer: 4 per day, 4 in possession.
- Redoubt Bay (See **Sitka Area salt water Special Regulations**).

### SALMON LAKE:

- Only unbaited, artificial lures or flies may be used year-round. The use of bait is prohibited.
- Cutthroat and rainbow trout limits (in combination): 2 per day, 2 in possession, 14 inch minimum and 22 inch maximum.

### SITKA SOUND SPECIAL USE AREA—tributaries in the fresh water drainages that drain into the Sitka Sound Special Use Area (see map on page 25):

- King salmon limits:
  - 10 per day, 10 in possession, no size limit.
  - Nonresident annual limit does not apply.

### SITKOH LAKE:

- Only unbaited, artificial lures or flies may be used year-round. The use of bait is prohibited.
- Cutthroat and rainbow trout limits (in combination): 2 per day, 2 in possession, 14 inch minimum and 22 inch maximum.

### STARRIGAVAN CREEK:

- **Closed to chum, coho, and sockeye salmon fishing.** All chum, coho, and sockeye salmon caught must be released immediately.
- Pink salmon limits:
  - 16 inches or longer: 6 per day, 12 in possession.
- King salmon limits:
  - See **Sitka Sound Special Use Area—tributaries**.

### SUKOI LAKE:

- Only unbaited, artificial lures or flies may be used year-round. The use of bait is prohibited.
- Cutthroat and rainbow trout limits (in combination): 2 per day, 2 in possession, 9 inch minimum and 22 inch maximum size limit.

### THIMBLEBERRY LAKE:

- The use of bait is allowed year-round.

### WRINKLENECK CREEK—main inlet to Swan Lake:

- **Closed to sport fishing.**

*Get the latest fishing info emailed to you.*

Sign up at: [www.wefishak.alaska.gov](http://www.wefishak.alaska.gov)

Fishing Reports ➤ Advisory Announcements ➤ Emergency Orders

## Salt Water Special Regulations - Sitka Area

Sitka Pelagic Rockfish Special Area – all the waters of Central Southeast Outside Section (CSEO map on page 23):

- Nonresidents Pelagic Rockfish: 3 per day, 6 in possession - no size limit.

**BEAR COVE** (in Silver Bay)—in all waters east of a line between the ADF&G markers in Bear Cove:

- **Closed to snagging.** Any fish hooked elsewhere than in its mouth must be released immediately.

**CAPE EDGE CUMBE** (The Pinnacles)—in the waters off Cape Edgecumbe enclosed by a box defined as 56°55.5'N. lat. and 56°57'N. lat. and 135°54' W. long. and 135°57' W. long. (see map on page 25):

- **Closed to halibut and bottomfish fishing**, including lingcod and all rockfish. All halibut and bottomfish caught must be released immediately.
- Vessels with halibut on board may not be anchored.

**MIST COVE**—in all waters west of a line between the ADF&G markers:

- **Closed to sport fishing.**

**KASNYKU BAY**—in all waters west of a line between the ADF&G markers:

- **Closed to sport fishing.**

**REDOUBT BAY**—South of the latitude of 56° 54.71' N. (see map on page 23):

- **Closed to snagging, June 1–August 31, by nonresident anglers;** any fish hooked elsewhere than in its mouth must be released immediately.
- **Closed to snagging, June 1–July 15, by resident anglers;** any fish hooked elsewhere than in its mouth must be released immediately.
- Sockeye salmon limits: 4 per day, 4 in possession.

## Salt Water Special Regulations - Sitka Area (continued)

**SITKA SOUND SPECIAL USE AREA** – In the area of Sitka Sound enclosed on the north by lines from Kruzof Island at 57° 20.50' N. lat., 135° 45.17' W. long. to Chichagof Island at 57° 22.05' N. lat., 135° 43' W. long., and from Chichagof Island at 57° 22.58' N. lat., 135° 41.30' W. long. to Baranof Island at 57° 22.28' N. lat., 135° 40.95' W. long., and on the south and west by a line running from the southernmost tip of Sitka Point at 56° 59.38' N. lat., 135° 49.57' W. long. to Hanus Point at 56° 51.92' N. lat., 135° 30.50' W. long. to the green day marker in Dorothy Narrows to Baranof Island at 56° 49.28' N. lat., 135° 22.60' W. long.; the following regulations apply (see map):

- See Sitka Sound Special Use Area—tributaries in fresh water exceptions on page 23-24.

### **SHELLFISH:**

- **Closed to sport fishing for shrimp.** The personal use shrimp fishery is open. See page 35 for more information.
- **Closed to the retention of razor clams.** All razor clams caught must be released immediately.

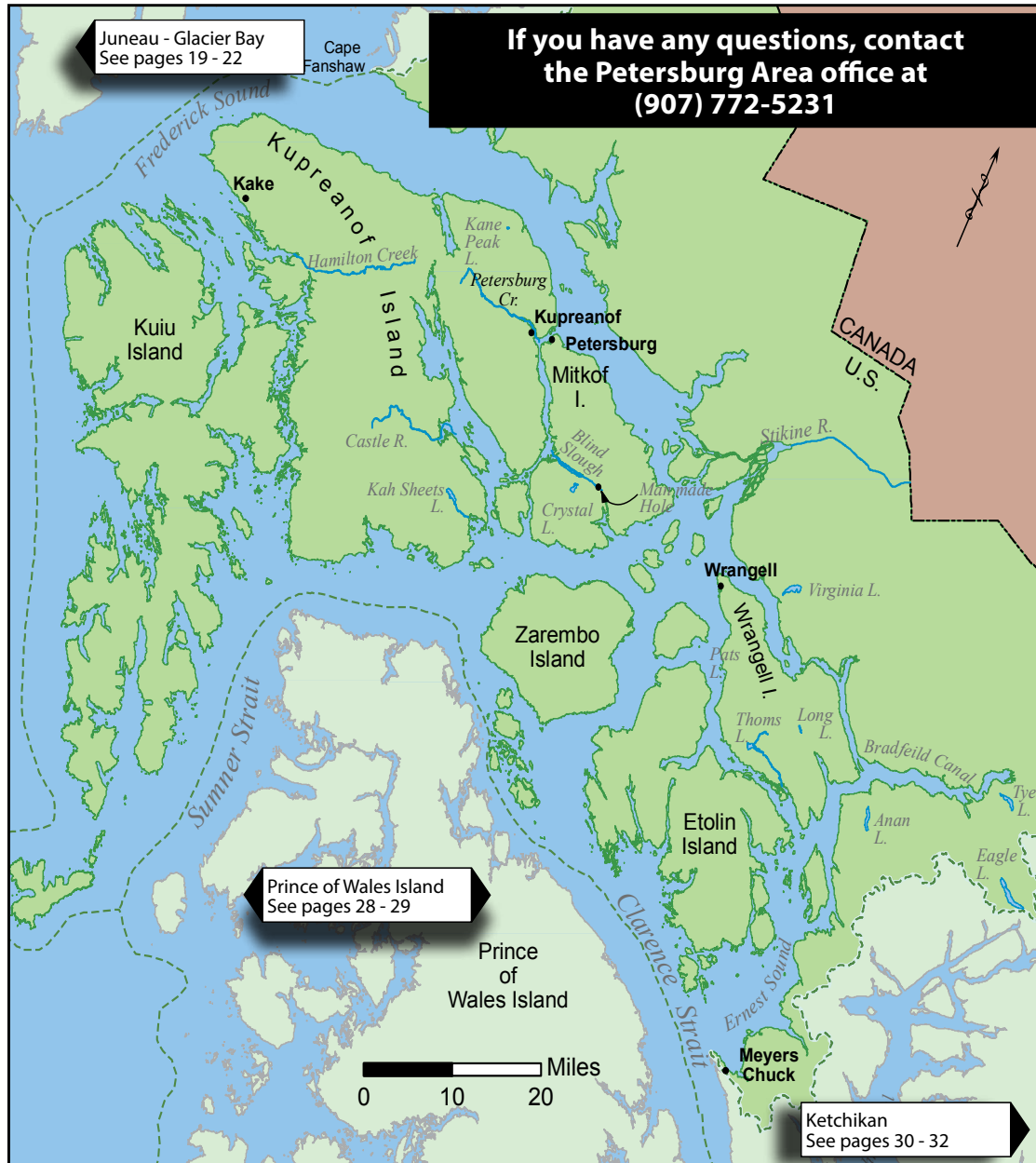
### **HALIBUT:**

- **Closed to the retention of halibut by chartered anglers, June 1-August 31.**

**If you have any questions,  
contact the Sitka Area office at  
(907) 747-5355**







## Fresh Water Special Regulations - Petersburg Area

**BLIND SLOUGH**—upstream of a line between Blind Point and Anchor Point (see map next page):

- **Closed to snagging**, any fish hooked elsewhere than its mouth must be released immediately.
- Bait may be used from June 1–November 15. Only unbaited, artificial lures or flies may be used from November 16–May 31.
- King salmon limits:
  - 28 inches or greater in length: 2 per day, 2 in possession.
  - Less than 28 inches in length: 2 per day, 2 in possession.
  - A king salmon 28 inches or greater in length harvested by a nonresident counts towards their annual limit and must be recorded on their harvest record.
  - These regulations remain in place except when modified by emergency order.

**BLIND SLOUGH TRIBUTARIES** including Manmade Hole (see map next page):

- **Closed to salmon fishing**. All salmon caught must be released immediately.

### CASTLE RIVER:

- Only unbaited, artificial lures or flies may be used year-round. The use of bait is prohibited.
- Steelhead: Catch and release fishing only, all steelhead caught must be released immediately.

### CRYSTAL LAKE:

- The use of bait is allowed year-round.

### HAMILTON CREEK:

- Only unbaited, artificial lures or flies may be used year-round. The use of bait is prohibited.
- Steelhead: Catch and release fishing only, all steelhead caught must be released immediately.

...continued

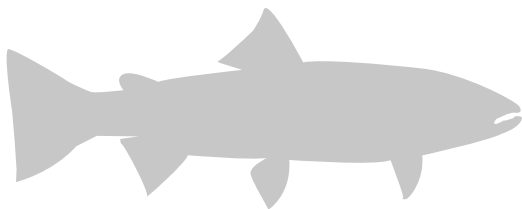
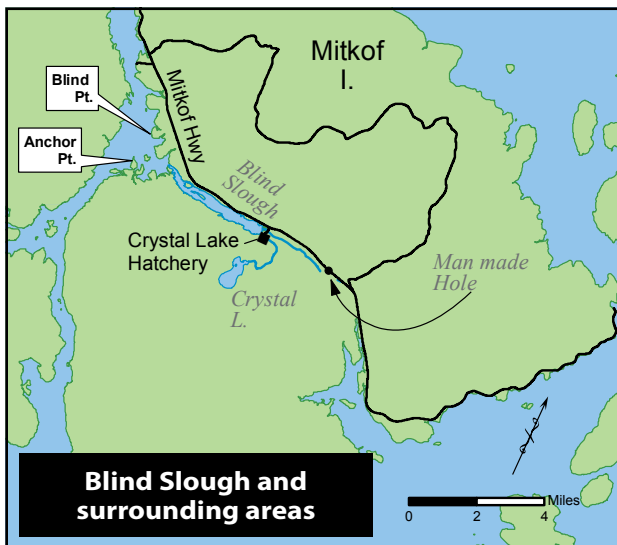
## Fresh Water Special Regulations - Petersburg Area (continued)

### **KAH SHEETS LAKE:**

- Only unbaited, artificial lures or flies may be used year-round. The use of bait is prohibited.
- Cutthroat and rainbow trout limits (in combination): 2 per day, 2 in possession, 14 inch minimum and 22 inch maximum size limit.

### **KANE PEAK LAKE:**

- The use of bait is allowed year-round.



## Fresh Water Special Regulations - Wrangell Area

### **ANAN LAKE:**

- Only unbaited, artificial lures or flies may be used year-round. The use of bait is prohibited.
- Cutthroat and rainbow trout limits (in combination): 2 per day, 2 in possession, 14 inch minimum and 22 inch maximum size limit.

### **EAGLE LAKE:**

- Only unbaited, artificial lures or flies may be used year-round. The use of bait is prohibited.
- Cutthroat trout limits: 1 per day, 1 in possession, 25 inch minimum size limit.

### **LONG LAKE:**

- Only unbaited, artificial lures or flies may be used year-round. The use of bait is prohibited.
- Cutthroat and rainbow trout limits (in combination): 2 per day, 2 in possession, 9 inch minimum and 22 inch maximum size limit.

### **PATS LAKE:**

- During the 3rd and 4th Saturday and Sunday of June (In 2022: June 18-19 and 25-26) the following regulations apply:
  - Bait may be used only by anglers under the age of 16.
  - Cutthroat trout limits for anglers under the age of 16 only: 2 per day, 2 in possession, no size limit.

### **THOMS LAKE:**

- Only unbaited, artificial lures or flies may be used year-round. The use of bait is prohibited.
- Cutthroat and rainbow trout limits (in combination): 2 per day, 2 in possession, 14 inch minimum and 22 inch maximum size limit.

### **TYEE LAKE:**

- The use of bait is allowed year-round.

### **VIRGINIA LAKE:**

- Only unbaited, artificial lures or flies may be used year-round. The use of bait is prohibited.
- Cutthroat and rainbow trout limits (in combination): 2 per day, 2 in possession, 14 inch minimum and 22 inch maximum size limit.



A happy angler with a fine catch.



If you have any questions,  
contact the Craig Area office at  
(907) 826-2498

## Fresh Water Special Regulations - Prince of Wales Island Area

### 108 CREEK:

- Only unbaited, artificial lures or flies may be used year-round. The use of bait is prohibited.
- Steelhead: Catch and release fishing only, all steelhead caught must be released immediately.

### CONTROL LAKE DRAINAGE:

- Only unbaited, artificial lures or flies may be used year-round. The use of bait is prohibited.
- Cutthroat and rainbow trout limits (in combination): 2 per day, 2 in possession, 14 inch minimum and 22 inch maximum size limit.
- Steelhead: Catch and release fishing only, all steelhead caught must be released immediately.

### DOG SALMON CREEK:

- Only unbaited, artificial lures or flies may be used year-round. The use of bait is prohibited.
- Steelhead: Catch and release fishing only, all steelhead caught must be released immediately.

### EAGLE CREEK:

- Only unbaited, artificial lures or flies may be used year-round. The use of bait is prohibited.
- Steelhead: Catch and release fishing only, all steelhead caught must be released immediately.

### HATCHERY CREEK:

- Closed to Sport fishing**, from June 1- July 31, 100 feet upstream of the upper falls to 100 feet downstream of the lower falls.
- Only unbaited, artificial lures or flies may be used year-round.
- Sockeye salmon limit:
  - 16 inches or longer: 3 per day, 6 in possession.
- Cutthroat and rainbow trout limits (in combination): 2 per day, 2 in possession, 14 inch minimum and 22 inch maximum size limit.

### HUNTER BAY CREEK:

- Only unbaited, artificial lures or flies may be used year-round. The use of bait is prohibited.
- Steelhead: Catch and release fishing only, all steelhead caught must be released immediately.

### KARTA RIVER DRAINAGE—including Karta Lake and Salmon Lake:

- The use of bait is prohibited year-round.
- Only one unbaited, single-hook, artificial lure or fly may be used year-round.
- Cutthroat and rainbow trout limits (in combination):
  - 2 per day, 2 in possession, 14 inch minimum and 22 inch maximum size limit.
- Steelhead: Catch and release fishing only, all steelhead caught must be released immediately.

### KEGAN LAKE:

- Only unbaited, artificial lures or flies may be used year-round. The use of bait is prohibited.
- Cutthroat and rainbow trout limits (in combination): 2 per day, 2 in possession, 14 inch minimum and 22 inch maximum size limit.

### KLAKAS CREEK:

- Only unbaited, artificial lures or flies may be used year-round. The use of bait is prohibited.
- Steelhead: Catch and release fishing only, all steelhead caught must be released immediately.

### KLAWOCK RIVER DRAINAGE:

- Cutthroat and rainbow trout limits (in combination): 2 per day, 2 in possession, 14 inch minimum and 22 inch maximum size limit.
- Klawock River drainage upstream of the Klawock River Bridge:**
  - Closed to sockeye salmon fishing.** All sockeye caught must be released immediately.
- Klawock River upstream from department markers:**
  - Only unbaited, artificial lures or flies may be used year-round. The use of bait is prohibited.
- Klawock River downstream of department markers (below Klawock weir):**
  - Bait is allowed from September 15 through October 15.

...continued



## Fresh Water Special Regulations - Prince of Wales Island Area (cont.)

### **LUCK LAKE**—including Eagle Creek:

- Only unbaited, artificial lures or flies may be used year-round. The use of bait is prohibited.
- Steelhead: Catch and release fishing only, all steelhead caught must be released immediately.

**MARGE LAKE:** The use of bait is allowed year-round.

**MELLEN LAKE:** The use of bait is allowed year-round.

### **NONAME LAKE:**

- Only unbaited, artificial lures or flies may be used year-round. The use of bait is prohibited.
- Cutthroat and rainbow trout limits (in combination): 2 per day, 2 in possession, 9 inch minimum size limit.

### **OLD FRANKS CREEK:**

- Only unbaited, artificial lures or flies may be used year-round. The use of bait is prohibited.
- Steelhead: Catch and release fishing only, all steelhead caught must be released immediately.

### **RED BAY LAKE:**

- Only unbaited, artificial lures or flies may be used year-round. The use of bait is prohibited.
- Cutthroat and rainbow trout limits (in combination): 2 per day, 2 in possession, 14 inch minimum and 22 inch maximum size limit.

### **SALMON BAY LAKE DRAINAGE:**

- Only unbaited, artificial lures or flies may be used year-round. The use of bait is prohibited.
- Steelhead: Catch and release fishing only, all steelhead caught must be released immediately.
- **Salmon Bay Lake:**
  - Cutthroat and rainbow trout limits (in combination): 2 per day, 2 in possession, 14 inch minimum and 22 inch maximum size limit.

**SALMON LAKE:** See Karta River drainage.

### **SARKAR RIVER DRAINAGE:**

- Only unbaited, artificial lures or flies may be used year-round. The use of bait is prohibited.
- Steelhead: Catch and release fishing only, all steelhead caught must be released immediately.
- **Sarkar Lake:**
  - Cutthroat and rainbow trout limits (in combination): 2 per day, 2 in possession, 14 inch minimum and 22 inch maximum size limit.

**SHINAKU LAKE:** The use of bait is allowed year-round.

### **STANEY CREEK:**

- Only unbaited, artificial lures or flies may be used year-round. The use of bait is prohibited.
- Steelhead: Catch and release fishing only, all steelhead caught must be released immediately.

**SUMMIT LAKE:** The use of bait is allowed year-round.

### **SWEETWATER LAKE DRAINAGE**—including Log Jam Drainage:

- Only unbaited, artificial lures or flies may be used year-round. The use of bait is prohibited.
- Sockeye salmon limit:
  - 16 inches or longer: 3 per day, 6 in possession.
- Cutthroat and rainbow trout limits (in combination): 2 per day, 2 in possession, 14 inch minimum and 22 inch maximum size limit.

### **THORNE RIVER DRAINAGE**—including Control Lake drainage:

- Only unbaited, artificial lures or flies may be used year-round. The use of bait is prohibited.
- Cutthroat and rainbow trout limits (in combination): 2 per day, 2 in possession, 14 inch minimum and 22 inch maximum size limit.
- Steelhead: Catch and release fishing only, all steelhead caught must be released immediately.

## Salt Water Special Regulations - Prince of Wales Island Area

**KLAWOCK HARBOR**—in all waters of Klawock Harbor south of the line from the Klawock blinker light to the Klawock cannery dock:

- **Closed to sockeye salmon fishing.** Any sockeye salmon caught must be immediately released.
- **Closed to snagging,** any fish hooked elsewhere than in its mouth must be released immediately

**TWELVE-MILE ARM**—in the waters of Twelve-Mile Arm West of a line from Prince of Wales Island at 55° 29.07'N. lat., 132° 37.60'W.long., to the northeastern most tip of Loy Island at 55° 29.07'N.lat., 132° 36.70'W. long., to the eastern most tip of Cat Island at 55 27.80'N. lat., 132° 39.08'W.long., to Prince of Wales Island at 55° 27.80'N. lat., 132° 40.93'W.long., including water nearest Hollis Anchorage:

- **Closed to sport fishing for shrimp.** All shrimp caught must be released immediately.



A beautiful day on the water in Southeast Alaska.



## ...continued

## Fresh Water Special Regulations - Ketchikan Area (continued)

### **HUMPBACK CREEK DRAINAGE**—including

#### **Humpback Lake:**

- Only unbaited, artificial lures or flies may be used year-round. The use of bait is prohibited.
- Steelhead: Catch and release fishing only, all steelhead caught must be released immediately.
- **Humpback Lake:**
  - Cutthroat trout limits: 1 per day, 1 in possession, 25 inch minimum.

### **JORDAN LAKE:** See Naha River drainage.

### **HECKMAN LAKE:** See Naha River drainage.

### **LITTLE GOAT LAKE:**

- The use of bait is allowed year-round.

### **MAHONEY LAKE DRAINAGE** (*Revillagigedo Island*):

- **Mahoney Creek:**
  - **Closed to salmon fishing.** All salmon caught must be released immediately.
- **Upper Mahoney Lake:**
  - The use of bait is allowed year-round.
- **Mahoney Lake:**
  - The use of bait is allowed year-round.

### **MANZANITA LAKE:**

- Only unbaited, artificial lures or flies may be used year-round. The use of bait is prohibited.
- Cutthroat trout limits: 1 per day, 1 in possession, 25 inch minimum.

### **MANZONI LAKE:**

- The use of bait is allowed year-round.

### **MCDONALD LAKE DRAINAGE:**

- Only unbaited, artificial lures or flies may be used year-round. The use of bait is prohibited.
- Steelhead: Catch and release fishing only, all steelhead caught must be released immediately.
- **McDonald Lake:**
  - Cutthroat and rainbow trout limits (in combination): 2 per day, 2 in possession, 14 inch minimum and 22 maximum.

### **MINNE LAKE:**

- The use of bait is allowed year-round.

### **NAHA RIVER DRAINAGE**—including *Heckman, Jordan, and Patching lakes:*

- Only unbaited, artificial lures or flies may be used year-round. The use of bait is prohibited.
- Steelhead: Catch and release fishing only, all steelhead caught must be released immediately.
- **Heckman Lake:**
  - Cutthroat and rainbow trout limits (in combination): 2 per day, 2 in possession, 14 inch minimum and 22 maximum.
- **Jordan Lake:**
  - Cutthroat and rainbow trout limits (in combination): 2 per day, 2 in possession, 14 inch minimum and 22 maximum.
- **Patching Lake:**
  - Cutthroat trout limits: 1 per day, 1 in possession, 25 inch minimum.

### **NELLIE LAKE:**

- The use of bait is allowed year-round.

### **NOOYA LAKE:**

- The use of bait is allowed year-round.

### **ORCHARD LAKE:**

- Only unbaited, artificial lures or flies may be used year-round. The use of bait is prohibited.
- Cutthroat trout limits: 1 per day, 1 in possession, 25 inch minimum.

### **ORTON LAKE:**

- The use of bait is allowed year-round.

### **PATCHING LAKE:** See Naha River drainage.

### **REFLECTION LAKE:**

- Only unbaited, artificial lures or flies may be used year-round. The use of bait is prohibited.
- Cutthroat trout limits: 1 per day, 1 in possession, 25 inch minimum.
- Coho, chum, pink, and sockeye salmon limits (in combination):
  - 16 inches or longer: 2 per day, 2 in possession.

### **SHELOKUM LAKE:**

- The use of bait is allowed year-round.

### **SNOW LAKE:**

- The use of bait is allowed year-round.

### **SPIT CREEK:**

- Only unbaited, artificial lures or flies may be used year-round. The use of bait is prohibited.
- Steelhead: Catch and release fishing only, all steelhead caught must be released immediately.

### **STEELHEAD CREEK:**

- Only unbaited, artificial lures or flies may be used year-round. The use of bait is prohibited.
- Steelhead: Catch and release fishing only, all steelhead caught must be released immediately.

### **SWAN LAKE:**

- The use of bait is allowed year-round.

### **WILSON LAKE:**

- Only unbaited, artificial lures or flies may be used year-round. The use of bait is prohibited.
- Cutthroat trout limits: 1 per day, 1 in possession, 25 inch minimum.



## Fresh Water Special Regulations - Ketchikan Area Road System

### **KETCHIKAN ROAD SYSTEM**—all drainages crossed by the Ketchikan City and Borough road system:

- Chum, coho, pink, and sockeye salmon limits (in combination):
  - 16 inches or longer: 2 per day, 2 in possession.
  - Less than 16 inches: 10 daily, 10 in possession.

### **CARLANNA LAKE DRAINAGE:**

- **Carlanna Creek:**
  - **Closed to sport fishing.**
- **Carlanna Lake**—including inlet streams:
  - The use of bait is allowed year-round.
  - Cutthroat and rainbow trout limits (in combination): 5 per day, 5 in possession, no size limit.

### **CITY PARK PONDS** (near Ketchikan Creek):

- The fishing season is open the first Saturday in June through August 31.
- The use of bait is allowed year-round.
- Rainbow trout, coho salmon, and king salmon limits (in combination): 5 per day, 5 in possession, no size limit.

### **HARRIET HUNT LAKE:**

- The use of bait is allowed year-round.
- Cutthroat and rainbow trout limits (in combination): 5 per day, 5 in possession, no size limit.

### **HERRING COVE CREEK:**

- **Upstream from the highway:**
  - **Closed to fishing.**
- **From the highway downstream to ADF&G markers:**
  - The fishing season is open August 10-December 31.
  - Coho, chum, pink, and sockeye salmon limits (in combination):
    - 16 inches or longer: 2 per day, 2 in possession.

### **KETCHIKAN CREEK**—including Schoenbar Creek:

- The fishing season is open September 15–May 31.
- Only unbaited, **single hook** artificial lures or flies may be used year-round. The use of bait is prohibited.
- Steelhead limits: 1 per day, 2 in possession, 36-inch minimum size, 2 fish annual limit, harvest record required (see page 6).
- Coho, chum, pink, and sockeye salmon limits (in combination):
  - 16 inches or longer: 2 per day, 2 in possession.
- *Note: See **Thomas Basin** in salt water exceptions if fishing at the mouth of Ketchikan Creek.*

### **Ketchikan Lake:**

- The use of bait is allowed year-round.

### **Schoenbar Creek:** See Ketchikan Creek.

### **WARD CREEK DRAINAGE**—including Perseverance, Connell and Talbot Lakes:

- Only unbaited, **single hook** artificial lures or flies may be used year-round. The use of bait is prohibited.
- Steelhead: Catch and release fishing only, all steelhead caught must be released immediately.
- Coho, chum, pink, and sockeye salmon limits (in combination):
  - 16 inches or longer: 2 per day, 2 in possession.

### **WHITMAN LAKE:**

- The use of bait is allowed year-round.

## Salt Water Special Regulations - Ketchikan Area

### **BEHM CANAL:**

- **Northern Behm Canal and contiguous bays**—enclosed by a northern line from Point Lees to Elsie Point, which continues through the ADF&G markers at the longitude of the outlet of Long Lake and by a southern line from Point Eva to Cactus Point, (see map on page 30):
  - **Closed to salmon fishing.** All salmon caught must be released immediately.

- **Southern Behm Canal and contiguous bays**—enclosed by a northern line from Point Eva to Cactus Point and by southern line at the latitude of Point Nelson (see map on page 30):
  - The fishing season for all species of salmon is open August 15-April 30.

### **NAHA BAY AREA**—all waters east of a line from Indian Point to the northeastern most tip of Betton Island to Survey Point:

- **Closed to nonresident sport fishing for shrimp.** All shrimp caught by nonresidents must be released immediately.

### **NEETS BAY**—east of a line between ADF&G regulatory markers located approximately one mile from the head of the Bay:

- The fishing season for all species of salmon is open November 16-June 14.

### **THOMAS BASIN**—seaward from the Thomas Basin Bridge to the breakwater:

- **Closed to snagging,** any fish hooked elsewhere than in its mouth must be released immediately.
- A maximum of two single hooks may be used year-round.
- The use of bait is allowed year-round.

## Fresh Water Special Regulations - Hyder Area

### **FISH CREEK AND MARX CREEK:**

- A maximum of two single hooks may be used year-round.

*Get the latest fishing info emailed to you.*

Sign up at: [www.wefishak.alaska.gov](http://www.wefishak.alaska.gov)

Fishing Reports ➤ Advisory Announcements ➤ Emergency Orders



# SHELLFISH REGULATIONS

## Sport and Personal Use • Southeast Alaska



**License Requirements:** A valid Alaska sport fishing license is required to take shellfish under personal use and sport regulations. Alaska residents 60 years or older with an ADF&G permanent ID card, residents under 18 and nonresidents under 16 years of age are exempt from these license requirements. Alaska **residents** harvest shellfish under personal use or subsistence regulations and **nonresidents** harvest shellfish under sport regulations. *Please note that this summary does not include subsistence regulations.*

**Seasons:** Fishing for shellfish is open the entire year except:

- **Tanner crab:** Closed June 16 through June 30, except in the Yakutat area (Cape Suckling to Cape Fairweather) where there is no closed season for Alaska residents.
- **King crab:** Open to residents only. Check for Emergency Order and/or permits with the nearest ADF&G office.

**Combining Limits:** Harvest, bag, possession, and pot limits for shellfish may not be added to those allowed for other fisheries (i.e. anglers may not combine gear or harvests from multiple fisheries to exceed applicable limits).

**Permit for Shrimp:** Anglers are required to obtain a free permit to harvest shrimp. Permits are available online at <https://www.adfg.alaska.gov/Store/> or at ADF&G offices.

- Nonresidents should obtain the Sport shrimp permit.
- Residents should obtain the Personal Use/Subsistence shrimp permit.

**Possession Limit:** For all shellfish species in Southeast Alaska, the possession limit equals one daily bag limit.

**Legal Crab:** Only male crab may be retained. Male crab less than the minimum size limit and all female crab may not be possessed and must be returned unharmed to the water immediately (see page 36).

**Live Holding Facilities:** Live holding facilities used to pool multiple bag limits of crab by one or more persons are not allowed.

**Disfiguring of Crab:** Until a crab has been processed or prepared for human consumption, no one may mutilate or otherwise disfigure it in any manner that prevents determination of whether it meets the minimum size limit.

**Sale of Shellfish:** It is unlawful to buy, sell, trade, or barter shellfish, their parts, or eggs caught under personal use or sport fishing regulations.

**Disturbing Other Angler's Pots:** Anglers may not disturb, tamper with, or pull another angler's pots without prior permission of the pots' owner.

**Furnishing Shellfish to Clients or Guests:** An owner, operator, or employee of a lodge, charter vessel, or other enterprise that furnishes food, lodging, or guide services may not furnish a client or guest of that enterprise shellfish, unless: (1) the shellfish has been taken with gear deployed and retrieved by the client or guest; (2) the gear has been marked with the client or guest's name and address, as specified on page 34; and (3) the shellfish is to be consumed by the client or guest or is consumed in the presence of the client or guest.

**Operators and Crew of a Charter Vessel:** A captain and crew of a charter vessel may not deploy, set, or retrieve their own gear in a shellfish fishery when that vessel is being chartered.

**Fishing from a Commercial Vessel:** A commercially licensed and registered vessel may not be used to take that species for which they are registered either 14 days before or 14 days after an open commercial season in the same area the vessel is registered. Additionally, a **person or vessel** that operates pots or ring nets for sport or personal use during the 30 days (14 days for the Yakutat area) immediately before the scheduled opening date of a commercial **king or Tanner crab** fishery, may not participate in these crab fisheries.

- A commercially licensed and registered shrimp fishing vessel may not be used to take personal use **shrimp in Districts 6-8 and 10** from February 15 through April 30.
- Additional restrictions or provisions (including provisions to deregister a vessel) may apply. See commercial shellfish regulations for specific information.

### **ALLOWABLE GEAR:** .....

**Shrimp:** Shrimp may be taken by pots, ring nets and trawls (trawls may be operated only by Alaska residents and require a permit).

**Crab:** Crab may be taken by pots, ring nets, diving gear, hand, dip nets, and hooked or hookless hand lines.

**Clams:** Clams may be taken by rakes, shovels, hand, or manually operated clam guns – geoducks may also be taken by residents using a hydraulic clam digger.

**Abalone:** Abalone may be taken by abalone irons, diving gear (except SCUBA and hookah gear, which are prohibited), or by hand.

**Scallops:** Scallops may be taken by diving gear, dip nets, or by hand. Residents may use abalone irons.

**Other shellfish:** Other shellfish may be taken by hook and line in addition to all other gear listed above. Alaska residents may use trawls, hand jigging and hand-operated dredges.

# SHELLFISH REGULATIONS - Pot Requirements

34

**ESCAPE RINGS:** Each pot used to take Dungeness, Tanner, or king crab must have a minimum of two escape rings on opposite sides of the pot. Escape rings on Dungeness pots must be on the upper half of the vertical plane of the pot.

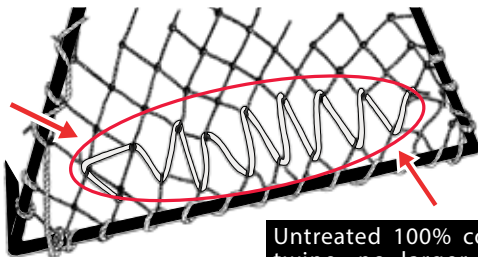
- **Dungeness** escape rings: 4¾ inches inside diameter
- **Tanner** escape rings: 4¾ inches inside diameter
- **King** escape rings: 6¼ inches inside diameter

**ESCAPE MECHANISM:** A biodegradable escape mechanism is required for crab and shrimp pots. Required escape mechanisms vary by pot construction and are divided into two categories: **non-rigid mesh pots** and **rigid mesh pots**.

**Non-rigid mesh pots:** Pot sidewalls, which may include the tunnel sidewalls, must contain an opening that is laced, sewn, or secured together by a single length of untreated, 100% cotton twine, no larger than 30-thread. The cotton twine may be knotted at each end only. The opening must be within six inches of the bottom of the pot and must be parallel with it. The cotton twine may not be tied or looped around the web bars. The opening must be equal to or exceeding the following lengths listed by species.

- **Dungeness:** opening is a minimum of 18 inches long. Or, as a substitute, the pot lid tie-down straps may be secured to the pot at one end by a single loop of untreated, 100% cotton twine, no larger than 60-thread. The pot lid must be secured so that when the twine degrades, the lid will no longer be securely closed.
- **King and Tanner:** opening is a minimum of 18 inches long.
- **Shrimp:** opening is a minimum of 6 inches long.

Opening at least 18 inches long (6 inches for shrimp pots)—no more than 6 inches from bottom of pot and parallel to it



Untreated 100% cotton twine, no larger than 30-thread

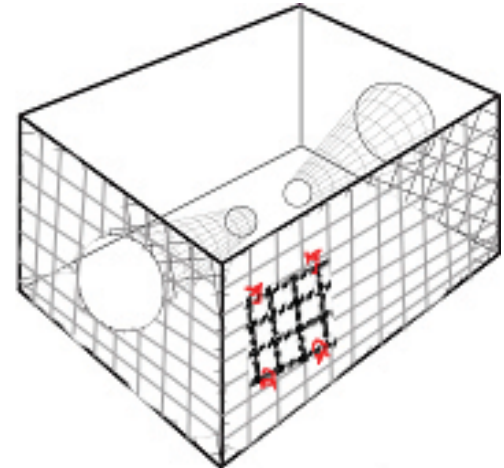
**BUOY MARKINGS:** Shellfish pot and ring buoys must be marked with:

- Angler's first initial and last name;
- Home address; and
- The Division of Motor Vehicles registration number (AK number) of the vessel used to operate the pot or the vessel name.

**SHRIMP POT SIZE REQUIREMENTS:** Any pot used to take shrimp may not have more than 4 tunnel eye openings, may not have a bottom perimeter greater than 153 inches, and may not exceed a volume of 25 cubic feet. No tunnel eye opening may exceed 15 inches in perimeter.

**Rigid mesh pots:** Must have at least one rectangular opening in a sidewall of the pot which may include a side of the tunnel. The lower long edge of the opening must be parallel to and within six inches of the bottom of the pot. The opening may be covered with a single panel secured to the pot with no more than four single loops of untreated, 100% cotton twine, no larger than 30-thread; each single loop of cotton twine may not be laced along the opening. The panel must be attached to the pot in a manner that when the cotton twine degrades, the panel will drop away from the pot exposing the opening completely. The panel must be equal to or exceeding the dimensions listed below.

- **Dungeness:** 10 inches x 6 inches or, as a substitute, the pot lid tie-down straps may be secured to the pot at one end by a single loop of untreated, 100% cotton twine, no larger than 60-thread. The pot lid must be secured so that when the twine degrades, the lid will no longer be securely closed.
- **King and Tanner:** 12 inches x 8 inches.
- **Shrimp:** 4 inches x 4 inches.





# SHELLFISH REGULATIONS - Resident and Nonresident

## ALASKA RESIDENTS

### Personal Use Shellfish Regulations

**King crab:** Check for Emergency Order and/or permits with nearest ADF&G office.

**Tanner crab:** 30 males, 5½ inches minimum size.

**Dungeness crab:** 20 males, 6½ inches minimum size, except in the waters of Thorne Bay west of the longitude of the southernmost tip of Thorne Head, the daily bag and possession limit is 5 male Dungeness crab, 6½ inches minimum size.

- **Dungeness Crab:** Closed year-round in the Yakutat Area (Cape Suckling to Cape Fairweather).

**Razor clams:** No bag, possession, or size restrictions, except Sitka Sound where razor clams may not be retained and the waters of western Kruzof Island beaches between Cape Edgecumbe and Cape Georgina, where the bag and possession limit is 50 clams.

**Scallops:** 5 rock scallops (*Hinnites sp.*) and 10 weathervane scallops (*Pecten sp.*), except in the Yakutat Area (between the longitude of Cape Suckling and Cape Fairweather) where the limit is 50 weathervane scallops. There are no limits for all other scallops.

**Shrimp:** A permit is required. No bag, possession, or size restrictions **EXCEPT** in the District 13 Sitka Area where the bag and possession limit of spot shrimp is 10 gallons (whole or deheaded).

**Geoducks:** 6 geoducks.

**Abalone:** 5 abalone, 3½ inches minimum size.

**Other shellfish species not listed above:** No bag, possession, or size restrictions.

### NUMBER OF POTS & RINGS ALLOWED FOR RESIDENTS

#### Dungeness, King, & Tanner Crab:

- While taking Dungeness crab, 5 pots **OR** 10 ring nets per person may be used, with a maximum of 10 pots **OR** 20 ring nets per vessel.
- While taking Tanner or king crab, no more than 4 pots **OR** 10 ring nets per vessel may be used (except 20 ring nets per vessel may be used in the Yakutat area).
- In the Juneau area, shellfish gear limits are established by emergency order. Please check with your local ADF&G office for this information.
- In total, no more than 5 pots per person and 10 pots per vessel may be used for taking shellfish regardless of pot type.

#### Shrimp:

- In addition to crab pots, 10 shrimp pots per person with a maximum of 20 pots per vessel may be used. Shrimp pots may be longlined.

## NONRESIDENTS

### Sport Shellfish Regulations

**King crab:** Closed to nonresidents.

**Tanner and Dungeness crab (in combination):** 3 males.

- Tanner crab: 5½ inches minimum size.
- Dungeness crab: 6½ inches minimum size.
- **Dungeness Crab:** Closed year-round in Yakutat Area (Cape Suckling to Cape Fairweather).

**Shrimp:** A permit is required. 3 pounds or quarts (whole or deheaded) - no size restrictions.

#### Areas Closed to the taking of shrimp:

**Ketchikan:** East of a line from Indian Point to the northeastern most tip of Betton Island to Survey Point.

**Prince of Wales:** Twelve Mile Arm (see page 29).

**Sitka Sound Special Use Area** (see page 25).

**Razor clams:** 10 razor clams, except Sitka Sound where razor clams may not be retained.

**Scallops:** 5 rock scallops (*Hinnites sp.*) and 10 weathervane scallops (*Pecten sp.*). There are no limits for all other scallops.

**Abalone:** Closed to nonresidents.

**Geoducks:** Closed to nonresidents.

**Other shellfish species not listed above:** No bag, possession, or size restrictions.

### NUMBER OF POTS & RINGS ALLOWED FOR NONRESIDENTS

#### Dungeness & Tanner Crab:

- While taking Dungeness crab, 4 crab pots **OR** 10 ring nets per person may be used with a maximum of 10 crab pots **OR** 20 ring nets per vessel.
- While taking Tanner crab, no more than 4 crab pots **OR** 10 ring nets per vessel may be used.
- In total, no more than 4 pots per person and 10 pots per vessel may be used for taking shellfish regardless of pot type.

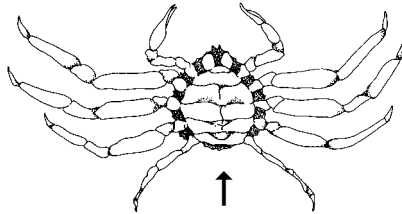
#### Shrimp:

- In addition to crab pots, 5 shrimp pots per person with a maximum of 10 pots per vessel may be used. Shrimp pots may **not** be longlined.

# SHELLFISH REGULATIONS - Crab ID and Measurement 36

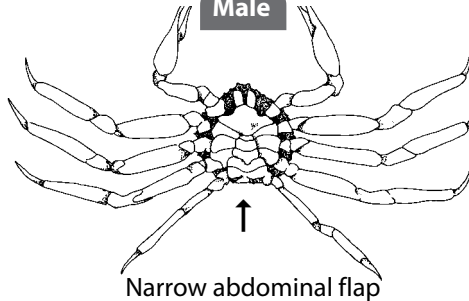
## TANNER CRAB (minimum size 5½ inches)

Female - **NO HARVEST ALLOWED**

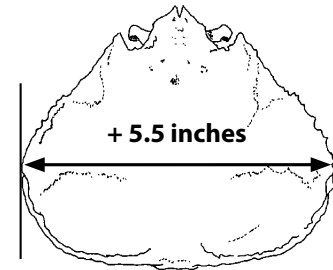


Wide abdominal flap covers most of underside  
(females usually smaller than 5½ inches)

Male



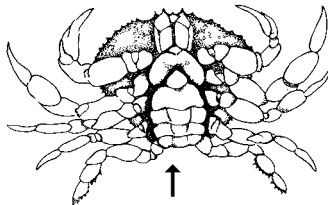
Narrow abdominal flap



Width measurement of Tanner crab is the straight-line distance across the carapace, **including** spines.

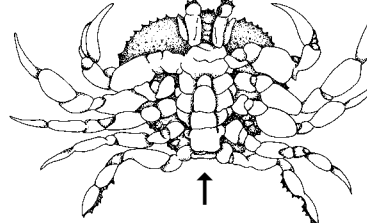
## DUNGENESS CRAB (minimum size 6½ inches)

Female - **NO HARVEST ALLOWED**

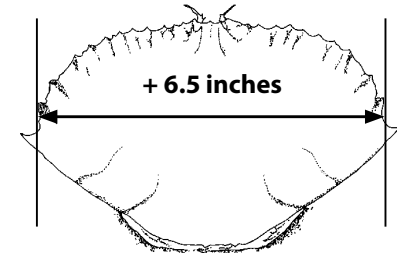


Wide abdominal flap covers most of underside

Male



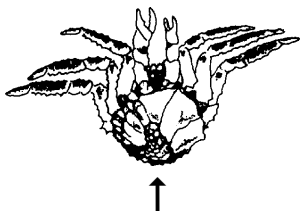
Narrow abdominal flap



Width measurement of Dungeness crab is the straight-line distance across the carapace, **NOT** including spines.

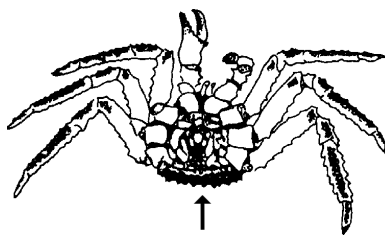
## KING CRAB (minimum size 7 inches)

Female - **NO HARVEST ALLOWED**



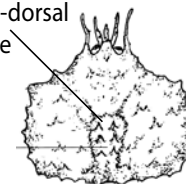
Wide abdominal flap covers most of underside

Male



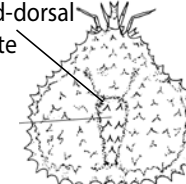
narrow abdominal flap

6 prominent spines on mid-dorsal plate



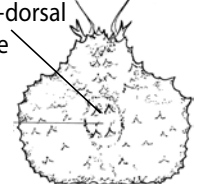
RED KING CRAB

5 to 9 spines on mid-dorsal plate



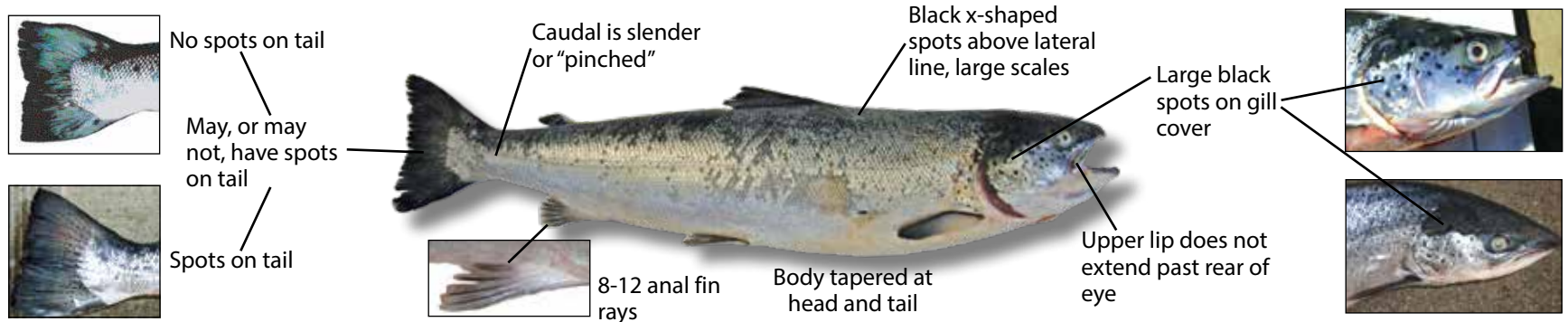
BROWN KING CRAB

4 prominent spines on mid-dorsal plate



BLUE KING CRAB

## ATLANTIC SALMON - Identification



Atlantic salmon photographs courtesy of Troy Tydingco.

## REPORT NON-NATIVE ATLANTIC SALMON TO THE NEAREST FISH AND GAME OFFICE

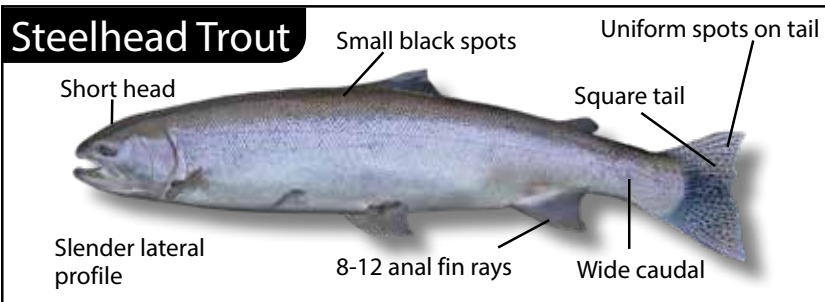
Over the past few years, ADF&G has verified harvests of Atlantic salmon in Southeast Alaska salt waters. Atlantic salmon are not native to the Pacific Ocean; they are raised in areas along the West Coast outside of Alaska, and their presence in Southeast Alaska waters is biologically undesirable. Anglers have reported catching Atlantic salmon in several of Southeast Alaska's fresh water systems. Alaska sport fishing regulations do not limit harvest of Atlantic salmon, but if you catch one, you can help us determine their status by bringing the entire fish to the nearest ADF&G office for biological sampling.

### Atlantic Salmon

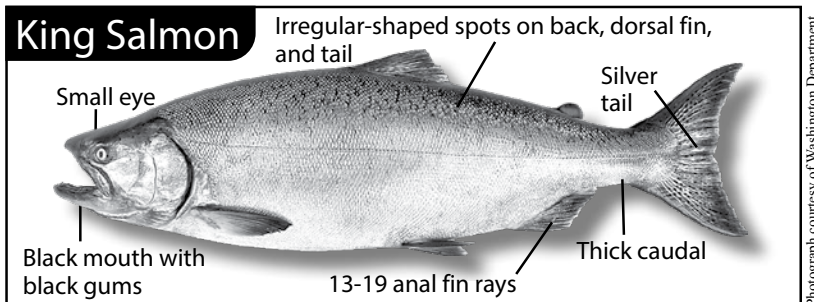
#### Identification Characteristics:

- Body tapered at head and tail
- Black spots on gill cover distinguish from all Pacific species
- Base of tail is slender or "pinched" in appearance
- Black x-shaped spots on back
- Large scales
- Upper jaw does not extend past rear of eye
- Fewer than 13 anal fin rays

### Steelhead Trout



### King Salmon



Photograph courtesy of Washington Department of Fish and Wildlife.





# Rockfish Identification



For the purposes of sport fishery management, rockfish are divided into two groups, **PELAGIC** and **NONPELAGIC**. Bag and possession limits differ for the groups, so it is important to be able to distinguish them. This chart shows the most common species in each group. Nonpelagic rockfish are further divided into demersal shelf rockfish (DSR) and slope rockfish.

## Pelagic Rockfish:

### Black Rockfish



(Black Bass); Dark gray to black with white belly. Usually uniform in color, but may have lighter patches along back. No pores on lower jaw. Size: up to 25 inches.

### Dusky Rockfish



Brownish body color with whitish belly, tinged with pink or orange; fins tinged with pink or orange; more common in deep water. Three pores on each side of lower jaw, and two dark bars on each cheek. Size: up to 20 inches.

### Yellowtail Rockfish



Olive green to greenish brown with lighter underside; fins distinctly yellowish green. Size: up to 26 inches.

*Photo by Vicky Okimura (WDFW)*

### Widow Rockfish



This is a relatively slim species in various shades of brown or brass that lighten towards the belly. Size: up to 23 inches.

### Dark Rockfish



Uniform black to dark blue on back and sides with slight gradual lightening on the belly, more common in shallow water. Size: up to 20 inches.

## Slope Rockfish:

### Redbanded Rockfish



Light pink to red with four dark red or reddish-brown vertical bars on body. Size: up to 25 inches.

### Silvergray Rockfish



Greenish to silver-gray body, belly white, tinged with soft orange or pink. Slender body fish with a long lower jaw protruding well beyond upper jaw. Size: up to 28 inches.

### Vermilion Rockfish



Dark red to orange-yellow with mottling on sides. Fins often edged with black. Three obscure stripes radiating from each eye. Rough, scaly lower jaw. Size: up to 30 inches.

### Rougheye Rockfish



Red, pink, or reddish-orange with dark blotches, fins often have black edges. 2-10 spines below the eye on the rim of orbit. Size: up to 38 inches.

### Shortraker Rockfish



Reddish pink to orange-red. Large pores on the lower jaw. Mouth is red and may have blotches. Gills very short and knob-tipped. Size: up to 43 inches.

# Demersal Shelf Rockfish:

## Quillback Rockfish



Brown body mottled with orange and yellow. Long, prominent spines on a high dorsal fin. Size: up to 24 inches.

## Yelloweye Rockfish



Orange red and orange yellow, bright golden yellow eye, fins may be black at tips. Juveniles have two light bands along the side, one on the lateral line and a smaller one below the lateral line. Size: up to 36 inches.

## China Rockfish



Mostly black, with bright yellow and white blotches and a yellow stripe along most of the lateral line. Size: up to 17 inches.

## Canary Rockfish



Bright yellow to orange mottled on a gray background. Fins orange and three orange stripes across the head. Gray along the lateral line. Size: up to 30 inches.

## Copper Rockfish



Olive brown to copper with pink or yellow blotches, white on sides and belly. Dorsal fins dark copper brown to black with some white. Rear two-thirds of lateral line is light. Size: up to 22 inches.

## Help Conserve Alaska's Rockfish

### Deepwater Release is Mandatory



### Deepwater Release Methods

#### Step 1:

Make sure your release device is ready — rockfish are most likely to survive when time at the surface is minimized. With practice, rockfish can be released within two minutes of reaching the surface.



Reel the fish up as quickly as possible. After unhooking it, hook the release device through soft tissue on the jaw. Make sure the hook does not have a barb. Release the anti-reverse on the reel so line can spool out freely.

**Rockfish are most likely to survive when released quickly at depth of capture (or 100 feet) using the following steps:**

#### Step 2:

Swing the fish slightly to one side and let go of the jig. Let line out as the weight pulls the fish back to the bottom. When the jig hits bottom (or 100 feet in depth), lock the reel and give a hard tug to release the fish.



Learn more at: [www.adfg.alaska.gov/rockfish](http://www.adfg.alaska.gov/rockfish)



## Conservation Tips

### ▪ Avoid catching unwanted rockfish.

When targeting other species, such as halibut or lingcod, avoid rockfish by keeping jigs and bait 10-15 feet off the bottom. This has little or no effect on halibut and lingcod catch rates. Move to a different area if you are catching rockfish unintentionally.

### ▪ Avoid excessive rockfish harvests.

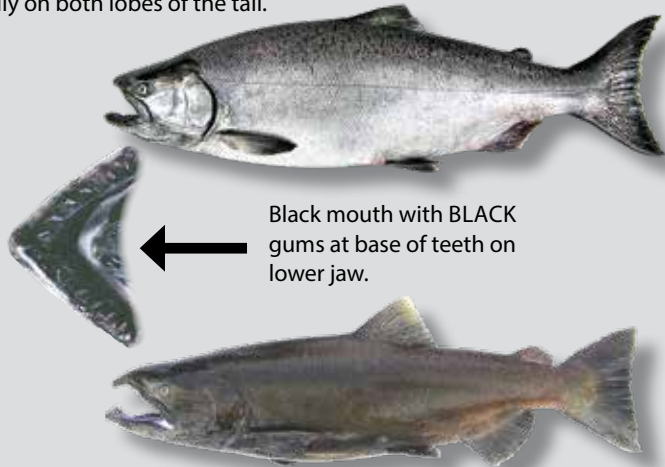
Rockfish have a freezer life of about four months, so harvest only what you are likely to eat in the near future.

### ▪ Use release-friendly tackle.

When fishing with bait, use a single circle hook. Circle hooks are less likely to cause injury by being deeply swallowed, increasing the chances of survival for released fish.

## KING (CHINOOK, TYEE, BLACKMOUTH) SALMON

Blue-gray back with silvery sides. Small, irregular-shaped black spots on back, dorsal fin, and usually on both lobes of the tail.

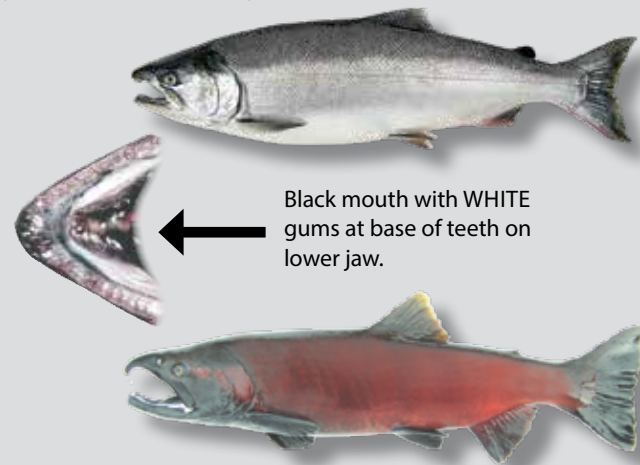


Black mouth with **BLACK** gums at base of teeth on lower jaw.

Spawning king salmon adults lose their silvery bright color and turn maroon to olive brown.

## COHO (SILVER) SALMON

Greenish-blue back with silvery sides. Small black spots on the back, dorsal fin, and usually on upper lobe of tail only.



Black mouth with **WHITE** gums at base of teeth on lower jaw.

Spawning coho salmon adults develop greenish-black heads and dark brown to maroon bodies.

## SOCKEYE (RED) SALMON

Dark blue-black back with silvery sides. No distinct spots on back, dorsal fin, or tail.



Spawning sockeye salmon adults develop dull-green heads and brick-red to scarlet bodies.

## CHUM (DOG, KETA, CALICO) SALMON

Dull gray back with yellowish-silver sides. No distinct spots on back or tail. Large eye pupil—covers nearly the entire eye.



Spawning adults develop olive-green coloration on the back with maroon sides covered with irregular dull red bars. Males exhibit many large canine-like teeth.

## PINK (HUMPY) SALMON

Large spots on the back and large black oval blotches on both tail lobes. Very small scales.



Spawning adults turn dull gray on their backs and upper sides and creamy white below. Males develop a pronounced hump.



# TROUT & OTHER SPECIES FOUND IN SOUTHEAST ALASKA

## RAINBOW TROUT



Green to bluish back with silvery to yellowish-green sides. Broad pinkish band along side and black spots on back, sides, and tail. Upper jaw usually does not extend past eye on adult.



## CUTTHROAT TROUT

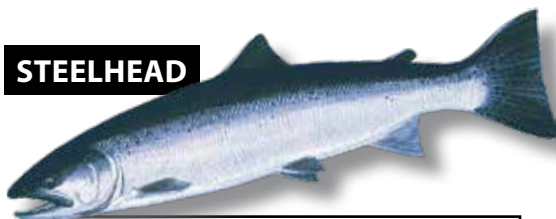
Yellowish-green body with no pinkish band along sides. Many black spots on back, sides, and tail. Upper jaw extends well past eye on adults. Red to orange slash on underside of lower jaw.

## ARCTIC GRAYLING



Light brown to dark purple back, fading to bluish-gray with black spots on sides. Very large dorsal fin with red and violet spots.

## STEELHEAD



White mouth with white gums at base of teeth on lower jaw.

California Department of Fish and Game

Sea-run rainbow trout with bluish-gray back and bright silvery sides. Slender body profile; 8-10 anal fin rays. Small black spots on back, sides, and tail. Pink/red coloration develops after returning to fresh water to spawn.



## DOLLY VARDEN CHAR

The body has a background coloration that can range from emerald green to bluish-gray or silver and is covered with lots of small light red spots (usually smaller than its pupil). The tail is slightly forked and there are no distinct spots on head or tail. Lower fins are red or orange with a white anterior border. Easily confused with Eastern Brook Trout, but Dolly Varden do not have wormlike markings on their back or dorsal fin. Found both in fresh and salt waters.

## EASTERN BROOK TROUT



Duane Raver/USFWS

Dark green or blue background with white belly; its upper body and dorsal fin have wavy, pale yellow wormlike markings or vermiculations. Its sides have small red or pink spots surrounded by light blue halo rings scattered among larger light yellow spots. The lower fins are white tipped and the tail is square. Not found in marine waters.

Waterbody	Community
Rustabach Lake	Haines
Upper & Lower Dewey Lakes	Skagway
Dorothy Lake	Juneau
Salmon Creek Reservoir	Juneau
Deep Lake	Sitka
Green Lake	Sitka
Heart Lake	Sitka
Long Lake	Sitka
Thimbleberry Lake	Sitka
Crystal Lake	Petersburg
Grace Lake	Ketchikan
Ketchikan Lake	Ketchikan
Shelokum Lake	Ketchikan
Perseverance Lake	Ketchikan
Emerald (Texas)Lake	Hyder

Eastern Brook Trout are not native to Alaska and are found only in the bodies of water listed above.

The following are some of the definitions set forth in AS 16.05.940, 5 AAC 75.020, and 75.995

**AREA**—Means a regulatory management area as described in 5 AAC 47-5 AAC 74.

**ARTIFICIAL FLY**—A fly which is constructed by common methods known as fly tying, including a dry fly, wet fly, and nymph, or a bare single hook that is free of bait as defined in 5 AAC 75.995. Materials and chemicals designed and produced primarily to cause flies to float or sink may be used on artificial flies.

**ARTIFICIAL FLY (UNWEIGHTED)**—A fly which weighs less than one-fourth ounce in its entirety.

**ARTIFICIAL LURE**—Any lure which is man-made, free of bait as defined in 5 AAC 75.995, and is used to attract fish. This includes an artificial fly.

**BAG LIMIT**—The maximum legal take of fish per person per day, in the area in which the person is fishing, even if part or all of the fish are immediately preserved; a fish when landed and not immediately released becomes a part of the bag limit of the person originally hooking it.

**BAIT**—Any substance applied to fishing gear for the purpose of attracting fish by scent, including fish eggs in any form, natural or preserved animal, fish, fish oil, shellfish, or insect parts, natural or processed vegetable matter, and natural or synthetic chemicals.

**BANNED INVASIVE SPECIES:** A non-native species that can become established in Alaska; competes with native species for food, habitat and resources; degrades habitat; threatens the health or population of native species; and causes economic or environmental harm.

**CHAR**—All char, including Dolly Varden, Arctic char, lake trout (Mackinaw), and eastern brook trout.

**CHARTER VESSEL**—Means a vessel used for hire in the sport, personal use, or subsistence taking of fish or shellfish, and not used on the same day for any other commercial fishing purpose; a charter vessel does not include a vessel or skiff without a charter vessel operator.

**CHARTER VESSEL OPERATOR**—A person engaged in carrying passengers on a charter vessel for any valuable consideration that passes directly or indirectly to the vessel's owner, operator, or a person with a financial interest in the vessel, in consideration of the carriage of any person on board.

**CLOSED SEASON**—The time during which fish may not be taken. Includes no catch-and-release fishing.

**CLOSED WATERS**—waters designated by the board wherein it is illegal to take fish.

**CLOSELY ATTENDED LINE**—That the line or strike indicator is within the view of and is accessible to the angler at all times.

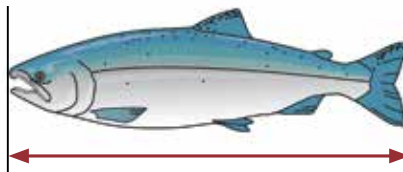
**DRAINAGE**—All of the waters comprising a watershed including tributary rivers, streams, sloughs, ponds, and lakes which contribute to the water supply of the watershed.

**DEEPWATER RELEASE MECHANISM**—A device designed to return a rockfish back near the bottom where it was hooked, or to a specified depth, and to assist the fish in recompression and to improve the fish's chance of survival.

**FISHING ROD**—A tapered, flexible rod typically used for sport fishing, equipped with a hand grip and a line guide system that guides the line from the reel to the tip of the rod, and upon which is mounted a fishing reel used to deploy and retrieve the sport fishing line.

**FRESH WATER**—All inland waters; inland waters are separated from salt water at the mouths of creeks, streams, and rivers at a line between extremities of the latter's banks at a mean low tide or at a point to be determined and adequately marked by the Department.

**LENGTH OF FISH**—The length from the tip of the snout to the tip of the tail (total length).



**LOCAL REPRESENTATIVE OF THE DEPARTMENT**—

(a) The nearest most accessible professional employee of the Department, (b) a person designated by the Commissioner or by a professional employee of the Department to perform specific functions for the Department, or (c) a law enforcement officer of the Department of Public Safety.

**MARK OR MARKING**—All forms of skin alteration, fin clipping, or other mutilation, or insertion of foreign materials in live fish that permit later identification.

**MOLESTING**—The harassing, disturbing, or interfering with fish by any means, including the use of any missile or object not established as legal gear; molesting includes dragging, kicking, throwing, striking, or otherwise abusing a fish which is intended to be released.

**MULTIPLE HOOK**—A fish hook with two or more points with or without barbs.

**OPEN SEASON**—The time during which fish may lawfully be taken; each period of time prescribed as an open season shall be construed to begin at 12:01 a.m. on the first day and end at midnight of the last day thereof.

**PEACE OFFICER OF THE STATE**—(a) An employee of ADF&G authorized by the Commissioner; (b) a police officer in the state; or (c) any other person authorized by the Commissioner.

**POSSESSION LIMIT**—The maximum number of unpreserved fish a person may have in possession.

**POWER ASSISTED FISHING REEL**—A reel used to deploy and retrieve the sport fishing line that is operated or assisted by any electronic hydraulic, or other mechanical power source other than by hand-cranking a handle attached to the reel.

**PRESERVED FISH**—Fish prepared in such a manner, and in an existing state of preservation, as to be fit for human consumption after a 15-day period, and does not include unfrozen fish temporarily stored in coolers that contain ice, dry ice, or fish that are lightly salted.

## DEFINITIONS (CONTINUED)

**REEL SEAT**—An attachment mechanism that holds the fishing reel to the rod using locking, threading rings, sliding bands, or other attachment devices and is designed to allow the reel to be readily detached from the fishing rod.

**ROCKFISH**—Includes all fish of the genus *Sebastes*.

**SALMON**—All salmon, including the five species of Pacific salmon: coho, chum, king, pink, and sockeye.

**SALT WATER**—All marine waters; marine waters are separated from fresh water at the mouths of streams, rivers, and creeks.

**SPEAR**—A hand-operated shaft with a sharp point or fork-like implement attached to one end, used to thrust through the water to impale or retrieve fish; includes a Hawaiian sling or pole spear which is a shaft propelled by a single loop of elastic material that is not equipped with a mechanical release or trigger.

**SPEARGUN**—A device designed to propel a spear through the water by means of elastic bands, compressed gas, or other mechanical propulsion to take fish that is equipped with a mechanical release or trigger.

**SINGLE HOOK**—A fish hook with only one point with or without a barb.

**SNAG**—To hook a fish elsewhere than in its mouth.

**SPORT FISHING**—The taking of or attempting to take for personal use, and not for sale or barter, any fresh water, marine, or anadromous fish by hook and line held in the hand, or by hook and line attached to a pole or rod which is held in the hand or closely attended, or by other means defined by the Alaska Board of Fisheries.

**STREAM MOUTH**—The downstream point defined as a straight line running from the most downstream extremity on one stream bank to the most downstream extremity on the other stream bank, or a point defined and marked by the Department.

**TAKE**—Taking, pursuing, fishing, or in any manner disturbing, capturing, or killing or attempting to take, pursue, fish, or in any manner capture or kill fish or shellfish.

**TOXICANT**—Any material or chemical that upon introduction to the waters of Alaska by direct or indirect means will kill, stun, or drive fish from their natural repose.

**TRANSPORT**—Ship, transport, carry, import, export, or receive or deliver for shipment, transportation, carriage, or export.

**TROUT**—Includes rainbow, steelhead, and cutthroat.

**WATERS OF ALASKA**—Has the same meaning as set out in 5 AAC 39.975(13).

**YEAR**—The calendar year from January 1 through December 31.



Coastal cutthroat caught on a fly.

## THE FISH & WILDLIFE SAFEGUARD PROGRAM



*Report Violations*

1-800-478-3377

If you witness or suspect that a fish or wildlife violation has occurred, please call our toll-free number. You will not have to reveal your name, testify in court, or sign a deposition. You will remain anonymous, and you may receive a reward.

Local Alaska Wildlife Troopers' office phone numbers are as follows:

Juneau .....	(907) 465-4000
Haines .....	(907) 766-2533
Hoonah .....	(907) 945-3620
Ketchikan.....	(907) 225-5118
Craig .....	(907) 826-2291
Petersburg.....	(907) 772-3983
Sitka.....	(907) 747-3254
Wrangell.....	(907) 874-3215
Yakutat .....	(907) 784-3220



Trout regulations in Southeast Alaska are based on the ADF&G's research on cutthroat trout and steelhead in Southeast, published literature on trout, and an intensive public review process. Regulations for managing trout (cutthroat and rainbow trout, in combination) and steelhead in Southeast Alaska are separated into two categories: **steelhead and all other trout**. Within these two categories, there are **eight different levels of regulation** which achieve maximum angler opportunity while preserving existing stocks at optimum levels.

## STEELHEAD:

**1. Region wide regulations:** Wild steelhead are one of Southeast Alaska's most prized resources. A minimum size limit of 36 inches has been established to provide a limited harvest opportunity yet protect most adult steelhead. Research shows that this size limit provides protection for 96% of adult steelhead throughout the region. In addition, there is an annual limit of 2 steelhead per person.

**2. Fall-run steelhead streams:** The Board of Fisheries has adopted added protection to 24 fall-run steelhead streams. The use of bait and retention of steelhead is prohibited year-round in these waters. See area specific regulations for these streams.

## CUTTHROAT/RAINBOW TROUT:

**3. Region wide regulations:** The 11 inch minimum and 22 inch maximum size limit for cutthroat trout accomplishes two essential goals: it protects the majority of all cutthroat trout until they can spawn at least once, and it protects juvenile steelhead (rainbow) trout so they cannot be harvested before they migrate to the ocean. Size limits are only effective if hooking mortality is reduced. Studies show that mortality rates for cutthroat when caught and released with natural bait can be as high as 48%, whereas mortalities from artificial gear (lures, flies, etc.) is less than 5%. Rainbow trout caught with bait and released may suffer a mortality rate of 28%, again much higher than with artificial gear. Bait is therefore banned in most fresh waters for 10 months of the year, with an opening intended to allow the use of bait for coho salmon fishing September 15 to November 15.

**4. Trophy cutthroat lakes:** Thirteen lakes in Southeast Alaska have produced cutthroat trout that historically qualified for entry in the ADF&G Trophy Fish Program. Anglers in a 1993 survey said that the opportunity to catch trophy-size cutthroat trout is important to them, and our research shows that cutthroat may not reach the 3-pound trophy size for about 12 years. No bait is allowed in trophy lakes, and 12 of the 13 lakes have a minimum size limit of 25 inches to allow harvest opportunity of a trophy fish—the exception being Turner Lake, where the retention of cutthroat trout is prohibited.

**5. High-use waters:** Areas with developed access have more intensive fisheries—28 lakes and the Juneau roadside waters are in this category. The minimum size limit is set at 14 inches to protect local populations of cutthroat trout until nearly all females have had a chance to spawn at least once. Bait is prohibited in these high-use lakes and areas year-round. In addition, in the Juneau road system streams, the retention of steelhead is prohibited.

**6. Small cutthroat lakes:** These are smaller lakes where sustainable populations of trout that are known not to produce trout over the regional size limit of 11 inches. In these lakes a 9 inch minimum and a 22 inch maximum size limit apply, bait is prohibited and region wide limits of 2 per day and 2 in possession stand.

**7. Stocked lakes:** Twin Lakes in Juneau, and Carlanna Lake and Harriet Hunt Lake near Ketchikan, bait is allowed year-round. There is no minimum size limit, and the bag limit is 5 trout per day and 5 in possession.

**8. High productivity lakes:** Stock status studies have shown that the cutthroat trout population in Florence Lake can sustain more harvest and in addition, fishing effort in this remote lake has declined. Thus, regulations are more liberal—at 5 per day and 10 in possession, no size limits—and bait is allowed year-round.

## Summary of Trout Regulations in Southeast Alaska

STEELHEAD		entire year
1. Region wide regulations (fresh and salt waters)		1 per day/2 in possession, 36 inch minimum size limit ANNUAL LIMIT of 2
2. Fall-run steelhead streams		retention and use of bait prohibited year-round
CUTTHROAT/RAINBOW TROUT		entire year
3. Region wide regulations (fresh and salt waters)		in Fresh water bait prohibited November 16 - September 14 2 per day/2 in possession, 11 inch minimum and 22 inch maximum size limit
4. Trophy cutthroat lakes		1 per day/1 in possession, 25 inch minimum size limit
Turner Lake		retention prohibited
5. High-use waters		2 per day/2 in possession, 14 inch minimum and 22 inch maximum size limit
6. Small cutthroat lakes		2 per day/2 in possession, 9 inch minimum and 22 inch maximum size limit
7. Stocked lakes		bait allowed year-round 5 per day/5 in possession, no size limits
8. High productivity lakes		bait allowed year-round 5 per day/10 in possession, no size limit



Steelhead Trout



# Boating Tips:

Division of Parks and Outdoor Recreation



**KNOW YOUR VESSEL**— Before departure, know that your vessel is in good working condition and properly equipped for emergencies. Avoid potential danger by keeping your boat well maintained; take a few minutes before each trip to inspect your boat. Use the checklist below.

**ALWAYS WEAR A LIFE JACKET!**— Drowning is the second leading cause of death in Alaska. Most Alaskans who die in boating accidents capsize or fall overboard and are not wearing life jackets. Life jackets should **always** be worn. Your life may depend on it!

**OBTAIN LOCAL KNOWLEDGE**— Study local maps, charts, weather reports, and tide tables. Contact the local harbormaster, village public safety officer, health officials, or talk to other local boaters before boating in a new area.

**ALCOHOL AND BOATING DON'T MIX**— Drinking while operating a boat is dangerous! Alcohol impairs your sense of balance, your peripheral and night vision, your judgment, and your reaction time. It also increases heat loss and risk of hypothermia.

**DON'T OVERLOAD**— Follow the recommendations of the capacity plate and owner's manual. Distribute weight for best handling, and secure loads against shifting. Remember, safe vessel capacity is greatly affected by weather and water conditions.

**ALWAYS COMPLETE A FLOAT PLAN**— Does someone know your plans in case you don't return on schedule? Leave word on where you are going and when you expect to return, who is onboard, and who to notify if you are overdue. Leave a detailed description of your boat and registration numbers. Then remember to let the same people know when you return. It's that simple!

**EDUCATE YOURSELF**— Boating education is a lifelong process. Take a boating safety course. Learn how to do basic troubleshooting and field repairs. Do your passengers know where the safety equipment is and how to use it? Do they know how to start, stop, and steer the boat? For information, contact the State Office of Boating Safety at (907) 269-8705, or visit our website:

[www.alaskaboatingsafety.org](http://www.alaskaboatingsafety.org)

- ☐ Life jackets for each person (properly sized and worn)
- ☐ Current weather forecast and tides checked
- ☐ Boat plug installed/sea cock closed
- ☐ VHF marine radio (tested prior to departure)
- ☐ Fire extinguishers (fully charged)
- ☐ Throwable flotation device with floating line attached
- ☐ Sound-producing device (air horn, whistle, bell)
- ☐ Visual distress signals (flares, orange flag, signal light)
- ☐ Fuel and oil sufficient for trip (1/3 out, 1/3 return, 1/3 reserve)

- ☐ Battery fully charged, terminals covered & battery secured
- ☐ Bilge pump and manual pump or bailing device
- ☐ Tools and spare parts (battery, fuses, spark plugs, belts)
- ☐ Navigation lights functioning properly
- ☐ Registration certificate onboard, numbers and decals affixed
- ☐ Anchor
- ☐ Paddle/oar or other alternate propulsion
- ☐ Food/emergency shelter/drinking water
- ☐ First Aid Kit

## FELT-SOLED FOOTGEAR PROHIBITED

Anglers are reminded that effective January 1, 2012, footgear with absorbent felt or other fibrous material on the soles are prohibited while sport fishing in the fresh waters of Alaska. The regulation was adopted by the Alaska Board of Fisheries in 2010 to reduce the potential for introduction and spread of invasive organisms, including plants, into Alaska waters. Invasive organisms spread by contaminated waders and other gear can threaten resident fish stocks and important fish habitat.

Wading boots are not the only means of transporting invasive species; all fishing, boating, or recreational equipment exposed to aquatic invasive species are potential carriers.

To reduce the chance of introducing invasive species, anglers should:

- **CLEAN**— Rinse and remove any mud, sediment, and/or plant debris from all gear, boats, and boat trailers, floatplane rudders and floats, and anything that comes into contact with the water. Separate all pieces of wading footgear and waders (remove liners, etc.) to check for and remove visible mud, sediment and/or plant debris before leaving the area. Use a stiff bristle brush to clean all fishing gear.
- **DRAIN**— Empty all water from coolers, bilge pumps, buckets, and wring out gear before leaving the boat launch or fishing areas.
- **DRY**— Completely dry gear between systems or trips.
- **DECONTAMINATE**— If drying is not possible, either freeze gear until solid or wash gear in 130°F hot water. If drying, freezing or heating gear is not feasible, use a 2% bleach solution to clean gear away from fresh water recreation sites. Spray or rinse gear for one minute. A 2% bleach solution can be made easily by mixing 2.5 oz. of chlorine bleach with tap water to make 1 gallon of solution.

*NOTE: Bleach solutions may degrade gear made of absorbent materials. Please rinse gear on land, away from fresh water fishing areas and dispose of disinfectants as indicated on the label.*

## PLEASE REPORT INVASIVE SPECIES BY CALLING: 1-877-INVASIV

For more information on preventing the spread of aquatic invasive species into Alaska's waters, please visit the Alaska Department of Fish and Game website <http://www.adfg.alaska.gov/index.cfm?adfg=invasive.main>.

# Angler Recognition Programs

## Trophy Fish Program

The Trophy Fish Program gives special recognition to anglers taking fish that meet minimum weight (trophy certificates) or length standards (catch-and-release certificates) within a species. Trophy fish for both certificates must be legally caught from waters open to the public, in compliance with current ADF&G sport fishing regulations. ***There is now a category for Youth anglers.***



Photo courtesy of Chris Cox.

## Five Salmon Family Challenge



The Five Salmon Family certificate program provides recognition to angling families who catch and document the five species of Pacific salmon commonly found in Alaska. Certification in the program requires all salmon must be legally caught in Alaskan waters (fresh or salt water) open to the public and in compliance with current ADF&G sport fishing regulations.

## Stocked Waters Challenge

The Stocked Waters Challenge program awards a certificate of recognition to individuals or groups who successfully complete one or more angling challenges at stocked waters.



# wefishak

Visit our website to find out more!

[www.wefishak.alaska.gov](http://www.wefishak.alaska.gov)

## Alaska Trophy Fish Record Holders

Species	Min. wt.	Lbs/oz	Year	Location	Angler
Arctic char/ Dolly Varden	10 lb	27/6	2002	Wulik River	Mike Curtiss
Brook trout	3 lb	3/4	2012	Green Lake	Kyle Kitka
Burbot	8 lb	24/12	1976	Lake Louise	George R. Howard
King salmon	(see below)	97/4	1985	Kenai River	Lester Anderson
Chum salmon	15 lb	32/0	1985	Caamano Point	Fredrick Thynes
Coho salmon	20 lb	26/0	1976	Icy Strait	Andrew Robbins
Cutthroat trout	3 lb	8/6	1977	Wilson Lake	Robert Denison
Grayling	3 lb	5/1	2008	Fish River	Peter Cockwill
Halibut	250 lb	459/0	1996	Unalaska Bay	Jack Tragis
Lake trout	20 lb	47/0	1970	Clarence Lake	Daniel Thorsness
Lingcod	55 lb	82/9	2007	Gulf of Alaska	Robert Hammond
Northern pike	15 lb	38/8	1991	Innoko River	Jack Wagner
Pink salmon	8 lb	13/7	2016	Kenai River	Robert Dubar
Rainbow/ steelhead trout	15 lb	42/3	1970	Bell Island	David White
Rockfish	18 lb	39/1	2013	Sitka	Henry Liebman
Sheefish	30 lb	53/0	1987	Pah River	Lawrence E. Hudnall
Sockeye salmon	12 lb	16/0	1974	Kenai River	Chuck Leach
Whitefish	4 lb	9/0	1989	Tozitna River	Al Mathews

King salmon minimum weight for the Kenai River is 75 lb. For the rest of the state, it is 50 lb.

**Minimum weights for trophy fish certificates** are listed on the table above (second column). Entries must be weighed in the presence of witnesses and a Trophy Fish Official, on a scale currently certified by the Division of Weights and Measures.

**For catch-and-release honorary certificates, do not remove your fish from the water.** Hold it just at the water's surface while a photograph is quickly taken, then release it into the current.

### Minimum lengths for catch-and-release certificates:

- Arctic char/Dolly Varden—30 inches
- Lake trout—36 inches
- Arctic grayling—18 inches
- Lingcod—53 inches
- Brook trout—20 inches
- Northern pike—40 inches
- Burbot—32 inches
- Rainbow/steelhead—32 inches
- Cutthroat trout—20 inches
- Sheefish—36 inches



**We've added a Youth Category to our Trophy Fish Program!**

Check out details at [www.wefishak.alaska.gov](http://www.wefishak.alaska.gov)



5 AAC 75.010(a) states that no person may possess any unpreserved fish not legally taken by himself or herself, unless he or she has a statement signed by the person taking the fish stating the type of fish, number of fish, the location and date taken, and the sport fishing license number. See page 7, "Possession of sport-caught fish."



Alaska Department of Fish and Game  
Division of Sport Fish

## TRANSFER OF POSSESSION FORM

**Anglers must fill out this form and give to recipient, along with fish or shellfish. Recipient must carry this form until fish or shellfish are preserved.**

### ANGLER INFORMATION

Name: \_\_\_\_\_ Sport fishing license no. \_\_\_\_\_

Address: \_\_\_\_\_

City

State

Zip

SPECIES TAKEN	NUMBER TAKEN	DATE TAKEN	LOCATION
_____	_____	_____	_____
_____	_____	_____	_____
_____	_____	_____	_____
_____	_____	_____	_____

Angler's signature: \_\_\_\_\_ Date: \_\_\_\_\_

### RECIPIENT INFORMATION

Name: \_\_\_\_\_

Address: \_\_\_\_\_

City

State

Zip

Recipient's signature: \_\_\_\_\_ Date: \_\_\_\_\_

## Sport Fishing by Proxy Proxy fishing for halibut is not allowed.

Alaska residents may proxy sport fish, proxy personal use fish, and/or proxy subsistence fish for another Alaska resident who is:

- (1) 70% or greater physically disabled (physician's affidavit required);
- (2) 65 years or older;
- (3) Legally blind (physician's affidavit required); or
- (4) Developmentally disabled (physician's affidavit required).

*No person may give or receive payment to be a beneficiary or a proxy.*

### To obtain a "Proxy Information Form":

Go to any Alaska Department of Fish and Game office, or visit:

<http://www.adfg.alaska.gov/index.cfm?adfg=personaluseproxyfishing.main>

IT'S UP TO ALL   
OF US TO **PROTECT**  
ALASKA WATERS.

.....  
**CLEAN** all aquatic plants, animals, and mud from your boat and gear before you leave the launch. Dispose of debris in the trash.

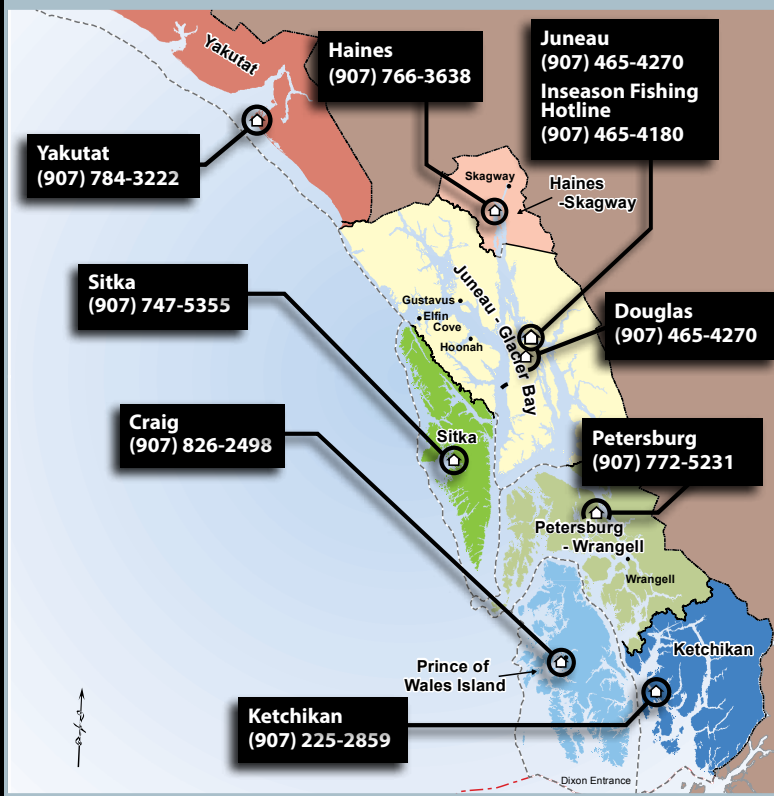
**DRAIN** water from bilge, ballast, motor, live-wells and bait buckets before you leave the area.

**DRY** your boat and gear as completely as possible between outings.  
.....



## Help Stop the Spread of Aquatic Invasive Species

## Alaska Department of Fish & Game Southeast Alaska Sport Fish Offices



The Alaska Department of Fish and Game (ADF&G) administers all programs and activities free from discrimination based on race, color, national origin, age, sex, religion, marital status, pregnancy, parenthood, or disability. The department administers all programs and activities in compliance with Title VI of the Civil Rights Act of 1964, Section 504 of the Rehabilitation Act of 1973, Title II of the Americans with Disabilities Act of 1990, the Age Discrimination Act of 1975, and Title IX of the Education Amendments of 1972. If you believe you have been discriminated against in any program, activity, or facility, please write: ADF&G ADA Coordinator, P.O. Box 115526, Juneau, AK 99811-5526; U.S. Fish and Wildlife Service, 4401 N. Fairfax Drive, MS 2042, Arlington, VA 22203; Office of Equal Opportunity, U.S. Department of the Interior, 1849 C Street NW, MS 5230, Washington, DC 20240. The department's ADA Coordinator can be reached via phone at the following numbers: (VOICE) 907-465-6077, (Statewide Telecommunication Device for the Deaf) 1-800-478-3648, (Juneau TDD) 907-465-3646, or (FAX) 907-465-6078. For information on alternative formats and questions on this publication, please contact the following: ADF&G, Sport Fish Division, Research and Technical Services, Anchorage, AK 99518, 907-267-2382.

This publication was released by Alaska Department of Fish and Game at a cost of \$0.22 per copy to provide fishing regulations to the public and printed in Anchorage, Alaska.

### A Message From the Commissioner



Alaska is blessed with world-class fishery resources, from salmon and trout, to halibut and rockfish, to grayling and burbot. These resources provide Alaskans an opportunity to feed their families and fill their freezers, or simply to get out and fish as a way to reduce the stress of their everyday lives. And they provide visitors to our state "trips of their lives."

Over the past couple years, we have endured some very difficult and challenging times. The worldwide COVID-19 pandemic has had significant impacts on our daily routines and personal behaviors. We understand the pandemic caused some to stay home, more put a halt to travel plans, and some were not able to make a trip to Alaska in 2021 to enjoy the natural beauty and outstanding resources this great state has to offer. We do hope to see you in 2022! Because the one thing that hasn't changed is, there are still plenty of fish throughout Alaska to enjoy with family and friends.

Since you're reading this, you are obviously one of the hundreds of thousands of people who fish in Alaska each year. We thank you for that! When you purchase a fishing license or king stamp, those dollars go directly toward funding fisheries resource conservation, management, research, and enhancement efforts in Alaska. When you purchase fishing equipment or boat fuel, a portion of those excise tax dollars go into a federal fund designed to distribute monetary resources back to states. These funds, distributed annually, are used for resource management and conservation and to provide improved access to fishing across Alaska. Your participation as an angler in Alaska helps the Alaska Department of Fish and Game to maintain and improve the state's fisheries. In our book, that makes you very special. Again, thank you!

We encourage you to get out and go fishing as a fun and healthy way to spend time with family and friends. Alaska's fish belong to the people. Our fisheries managers and division staff take this responsibility quite seriously.

We are stronger together. And as anglers, we are unified under a common goal – to get out and fish and to conserve those opportunities for our future generations. With that in mind, please consider taking someone fishing who has never been. If you're active on social media, please share your photos using #wefishak. Let's work together to ensure Alaska's pristine sport fisheries can be enjoyed by everyone now and in the future.

**Doug Vincent-Lang**  
Commissioner, Alaska Department of Fish and Game

### A Message From the Director

Fishing in Alaska is an experience that should be shared with friends or family. There are countless fishing opportunities to enjoy. This year we're looking forward to helping make your experience fishing in Alaska more enjoyable by introducing our new mobile app.



You probably noticed on the front cover of this book a way for you to access and download our new mobile app. We are excited to bring this app to you. We've spent a considerable amount of time developing the app and hope you find using it easy and beneficial as you take to the waters of Alaska with a fishing rod in hand. In the mobile app you will have access to detailed maps, current fishing and hunting regulations; you'll have the ability to maintain your licenses and select permits and you will be able to use navigational tools to display fishing regulations for where you're fishing.

We thank you for being one of the thousands of anglers who take to the pristine waters of Alaska in pursuit of your next catch. The money you spend on a sport fishing license and king salmon stamp all goes directly back into managing the resources. You help keep Alaska's aquatic resources healthy and sustainable for future generations. Thank you.

We truly hope you make time this year to get out and fish. While you're at it, make time to take someone with you who has never been fishing. Introducing someone to fishing is a great opportunity to share a unique experience.

If you have questions about fishing or our diverse fisheries in Alaska, please don't hesitate to contact one of our offices. We are here to help you.

Good luck!

**Dave Rutz**  
Director, Division of Sport Fish –  
Alaska Department of Fish and Game

