

GENERAL REGULATIONS - ANCHORAGE

Inclusive waters: All waters draining into the east side of Knik Arm south of, and including, the Eklutna River drainage, and all waters draining into the north and west sides of Turnagain Arm, and all waters draining into the south side of Turnagain Arm east of, and including Ingram Creek.

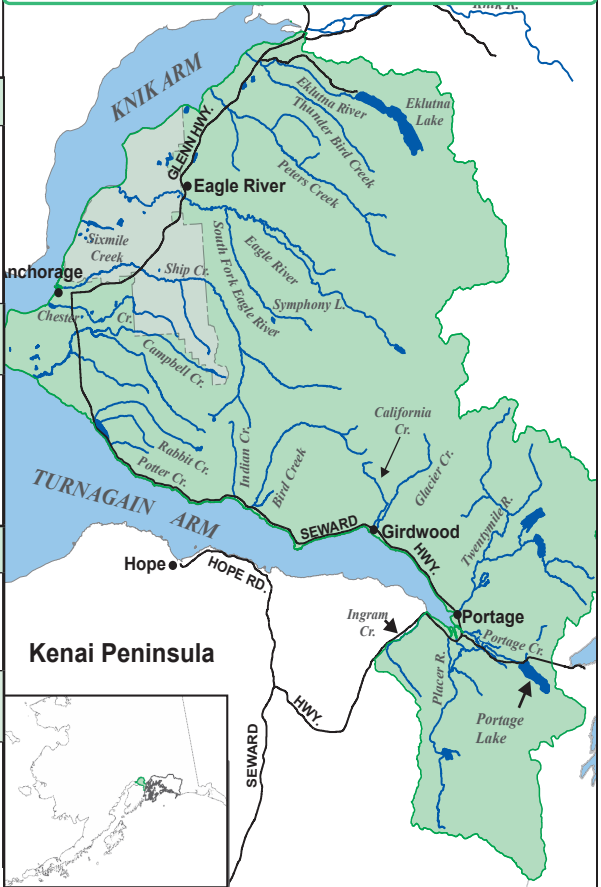
Fishing is open year-round for all species unless otherwise noted below or in special regulations.

METHODS AND MEANS: Bait and multiple hooks are allowed unless prohibited in special regulations.

Stay legal - before you cast, check emergency orders at www.adfg.alaska.gov/sf/EONR.

SPECIES	OPEN SEASON	DAILY BAG LIMITS
KING SALMON	EO King salmon fishing is closed in 2026 by emergency order.	
	See exceptions for Ship Creek on page 43.	
CHUM, COHO, PINK, & SOCKEYE SALMON (COMBO)	A coho (silver) salmon 16 inches or longer that is removed from the water must be retained and becomes part of the bag limit of the person who originally hooked the fish. You may not remove a coho salmon 16 inches or longer from the water before releasing it.	
	In stocked lakes:	
	Open year-round	5 per day, 5 in possession, in combination with king salmon. See pages 86-87.
	In unstocked lakes and in all flowing waters:	
Open year-round	Closed to all salmon fishing , unless allowed under special regulations.	
RAINBOW/ STEELHEAD TROUT (COMBO)	There is a total annual limit of 2 rainbow/steelhead trout 20 inches or longer taken north of the latitude of Point Adam, from the waters of the following areas: West Cook Inlet, Susitna River Drainage, Knik Arm, Anchorage Bowl, Kenai Lake drainages, Kenai River tributaries, and Kenai Peninsula. If you retain a rainbow/steelhead trout 20 inches or longer, you must immediately record that harvest. Harvest record required. See page 4.	
	In stocked waters:	
	Open year-round	5 per day, 5 in possession, only 1 of which may be 20 inches or longer. See pages 86-87.
	In unstocked lakes and in all flowing waters:	
	Open year-round	2 per day, 2 in possession, only 1 of which may be 20 inches or longer.
ARCTIC CHAR/ DOLLY VARDEN (COMBO)	In stocked lakes:	
	Open year-round	5 per day, 5 in possession. See pages 86-87.
	In unstocked lakes and in all flowing waters:	
	Open year-round	5 per day, 5 in possession, only 1 of which may be 12 inches or longer. ...continued

Questions? Please contact the Anchorage area office at (907) 267-2218.



SPECIES	OPEN SEASON	DAILY BAG LIMITS
ARCTIC GRAYLING	In stocked lakes:	
	Open year-round	5 per day, 5 in possession. See pages 86-87.
	In unstocked lakes and in all flowing waters:	
	Open year-round	2 per day, 2 in possession. *See special regulations for Symphony Lake.
NORTHERN PIKE INVASIVE SPECIES	Open year-round	No limit. Live Release Prohibited. You are not allowed to release live pike back into the water. Pike not retained for personal use may be disposed of through lawful and safe methods, including returning dead pike to the water. Northern pike may be taken by spear, sport fishing gear, ice fishing gear, or by bow and arrow (the arrow must be attached to the bow with a line and the arrow must have a barbed tip). When fishing through the ice for northern pike, you may use two hooks on a single line, provided that both hooks are attached to one single piece of bait.
LAKE TROUT	Open year-round	2 per day, 2 in possession, no size limit.
OTHER FINFISH	Open year-round	No limit.

CAMPBELL CREEK DRAINAGE

April 15-June 14: Entire drainage is closed to all fishing.
June 15-July 31: Single-hook, artificial lure only; bait prohibited.

- Closed year-round to all sport fishing.
- July 14-Sept. 30: Open to coho salmon fishing, open to species other than salmon.
- July 14-Sept. 30: Open to coho salmon fishing, open to species other than salmon.
- Oct. 1-July 13: Closed to all sport fishing.
- Catch-and-release fishing for rainbow trout. Closed year-round to all salmon fishing.

SPECIAL REGULATIONS - ANCHORAGE

CAMPBELL CREEK DRAINAGE:

- EO Bait and multiple hooks are prohibited until August 1 by emergency order.
- April 15-June 14: Closed to all sport fishing.
- In Campbell Creek waters open to retention, the following limits apply:
 - Rainbow/steelhead trout: 5 per day, 5 in possession, only 1 of which may be 20 inches or longer.
 - Arctic char/Dolly Varden: 5 per day, 5 in possession, only 1 of which may be 12 inches or longer.
 - Coho salmon: 3 per day, 3 in possession, no size limit.
- From its mouth upstream to ADF&G markers under the Dimond Boulevard Bridge including Campbell Lake:
 - Closed year-round to all sport fishing.

- From ADF&G markers under the Dimond Boulevard Bridge to ADF&G markers near Shelikof Street:

Jan. 1 - April 14	Closed to all salmon fishing. Open to species other than salmon.
April 15 - June 14	Closed to all sport fishing.
June 15 - July 13	Closed to all salmon fishing. Open to species other than salmon. Single-hook, artificial lure only; bait prohibited.
July 14 - Sept. 30	Open to coho salmon fishing. Open to species other than salmon. *July 14-July 31: Single-hook, artificial lure only; bait prohibited by EO.
Oct. 1 - Dec. 31	Closed to all salmon fishing. Open to species other than salmon.

- From ADF&G markers near Shelikof Street upstream to ADF&G markers on the upstream side of the Lake Otis Parkway Bridge:
 - Closed year-round to all sport fishing.

...continued

Campbell Creek Drainage continued...

- From ADF&G markers on the upstream side of the Lake Otis Parkway Bridge to an ADF&G marker located near Piper Street:

Jan. 1 - July 13	Closed to all sport fishing.
July 14 - Sept. 30	Open to coho salmon fishing. Open to species other than salmon. *July 14-July 31: Single-hook, artificial lure only; bait prohibited by EO.
Oct. 1 - Dec. 31	Closed to all sport fishing.

- **Upstream of the forks near Piper Street:**
 - **Rainbow/steelhead trout:** Catch-and-release fishing only. Only Arctic char/Dolly Varden may be kept in this section.
 - Only one unbaited, single-hook, artificial lure or fly is allowed.

Jan. 1 - April 14	Closed to all salmon fishing. Open to species other than salmon.
April 15 - June 14	Closed to all sport fishing.
June 15 - Dec. 31	Closed to all salmon fishing. Open to species other than salmon.

CAMPBELL CREEK YOUTH-ONLY FISHERY:

From ADF&G markers under the Dimond Boulevard Bridge to the Old Seward Highway:

EO In 2026, the Youth-Only king salmon fishery is catch-and-release only. Bait and multiple hooks are prohibited by emergency order.

- If you are 15 years of age or younger, you may fish from 6 a.m. to 10 p.m. on the last Saturday and Sunday of June each year. **In 2026, this will be Saturday, June 27 and Sunday, June 28.**
- Anglers 16 years of age and older may NOT sport fish in Campbell Creek from ADF&G markers under the Dimond Boulevard Bridge to the Old Seward Highway during this time.

CHESTER CREEK DRAINAGE - includes east and west Chester Lagoon and University Lake:

- **Closed year-round to all salmon fishing.**
- **June 15-April 14:** Open to sport fishing for species other than salmon.
- **Rainbow/steelhead trout:** 5 per day, 5 in possession, only 1 of which may be 20 inches or longer. Harvest record required, see page 38.

SPECIAL REGULATIONS - EAGLE RIVER & CHUGIAK AREA

EAGLE RIVER DRAINAGE:

EO King salmon fishing is closed in 2026 by emergency order.

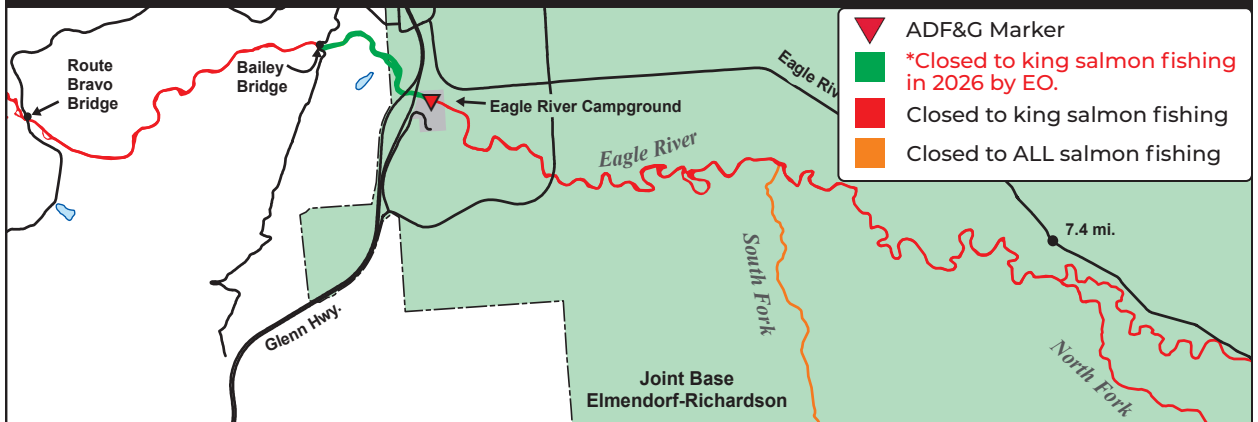
- Unless specified below, the Eagle River drainage is open to sport fishing for species other than salmon.
- **In Eagle River waters open to salmon fishing:**
 - **Chum, coho, pink, and sockeye salmon (combo):**
 - **16 inches or longer:** 3 per day, 3 in possession, only 2 per day, 2 in possession may be coho salmon.
 - **Less than 16 inches:** 10 per day, 10 in possession.
- **From its mouth upstream to the Route Bravo Bridge on Joint Base Elmendorf-Richardson:**
 - **Closed year-round to all sport fishing.**
- **From the Route Bravo Bridge upstream to ADF&G markers at Mile 7.4 of the Eagle River Road, including waters within 100 yards of its confluence with the South Fork (but not including South Fork):**
 - Open year-round to sport fishing for species other than king salmon.
- **EO May 1-July 13: Only one unbaited, single-hook, artificial lure with a gap between the point and shank of the hook is ½ inch or less in 2026 by emergency order.**
- **From the ADF&G markers at Mile 7.4 of the Eagle River Road upstream, and the North Fork and its tributaries:**
 - **September 16-May 31:** Open to sport fishing for species other than king salmon.

SOUTH FORK EAGLE RIVER:

- **From its confluence with Eagle River upstream to the falls:**
 - **Closed year-round to all salmon fishing.**
 - Open year-round to sport fishing for species other than salmon.
- **From the falls upstream:**
 - Open to sport fishing. See general regulations on pages 38-39.

...continued

EAGLE RIVER - UPSTREAM OF ROUTE BRAVO BRIDGE



JBER Fishing Access: Register and obtain a recreation permit at www.jber.recaccess.com. A DoD ID (or accompaniment by someone with one) is required for Elmendorf and training areas north of the Glenn Highway. Areas south of the Glenn Highway are open to the public with a recreation permit only.

EKLUTNA RIVER DRAINAGE - including Eklutna Lake: (The Eklutna Tailrace is part of a different drainage. See page 35 for more info.):

- **Chum and pink salmon (combo):**
 - **16 inches or longer:** 3 per day, 3 in possession.
 - **Less than 16 inches:** 10 per day, 10 in possession.
- **From its mouth upstream to the Glenn Highway Bridge:**
 - Open to sport fishing for species other than king, sockeye, and coho salmon.
- **Upstream of the Glenn Highway Bridge:**
 - **January 1-September 30:** Open to sport fishing for salmon other than king, sockeye, and coho salmon.

PETERS CREEK DRAINAGE:

- **From its mouth upstream to the Glenn Highway:**
 - Open year-round to sport fishing for species other than king salmon.
 - **Chum, coho, pink, and sockeye salmon (combo):**
 - **16 inches or longer:** 3 per day, 3 in possession, only 2 per day, 2 in possession may be coho salmon.
 - **Less than 16 inches:** 10 per day, 10 in possession.
- **Upstream of the Glenn Highway:**
 - Open year-round to sport fishing for species other than salmon.
 - **Closed year-round to all salmon fishing.**

SIXMILE CREEK DRAINAGE - JBER:

- **Downstream of ADF&G markers located near the mouth:**
 - See general regulations on page 67 for the *Cook Inlet salt waters*.
- **From ADF&G markers located near its mouth upstream to Lower Sixmile Lake:**
 - **Closed year-round to all sport fishing.**

SYMPHONY LAKE:

- **July 1-May 1:** Open to sport fishing.
- **Arctic grayling:** 5 per day, 5 in possession, only 1 of which may be 12 inches or longer.
- **Rainbow trout:** 2 per day, 2 in possession, only 1 of which may be 20 inches or longer. If you retain a rainbow trout 20 inches or longer, you must immediately record that harvest. See page 38.

POTTER CREEK/POTTER MARSH DRAINAGE:

- **Closed year-round to all sport fishing.**

RABBIT CREEK DRAINAGE:

- **Closed year-round to all salmon fishing.**
- **From its mouth upstream to the Old Seward Highway:**
 - **Closed year-round to all sport fishing.**
- **Upstream of the Old Seward Highway:**
 - Open year-round to sport fishing for species other than salmon.

SPECIAL REGULATIONS - TURNAGAIN ARM STREAMS AREA

Excluding Bird Creek special regulations, the following bag and possession limits apply to all Turnagain Arm streams on page 42 that are open to salmon fishing:

- **Chum, coho, pink, and sockeye salmon (combo):**
 - **16 inches or longer:** 3 per day, 3 in possession, only 2 per day, 2 in possession may be coho salmon.
 - **Less than 16 inches:** 10 per day, 10 in possession.

BIRD CREEK DRAINAGE:

- **January 1-July 13:** Closed to all sport fishing.
- **July 14-December 31:** Open to sport fishing for species other than king salmon.
- **From its mouth upstream approximately 500 yards to an ADF&G marker:**
 - **July 14-December 31:** Open to sport fishing for species other than king salmon.
 - **Chum, coho, pink, and sockeye salmon (combo):**
 - **16 inches or longer:** 3 per day, 3 in possession.
 - **Less than 16 inches:** 10 per day, 10 in possession.
- **Upstream from an ADF&G marker approximately 500 yards upstream of its mouth:**
 - **July 14-December 31:** Open to sport fishing for species other than salmon.

Access note: Private land begins approximately 100 yards downstream of the ADF&G markers near the Seward Highway Bridge. Upstream of this point, all adjacent land is privately owned; legal public access is limited to the streambed only.

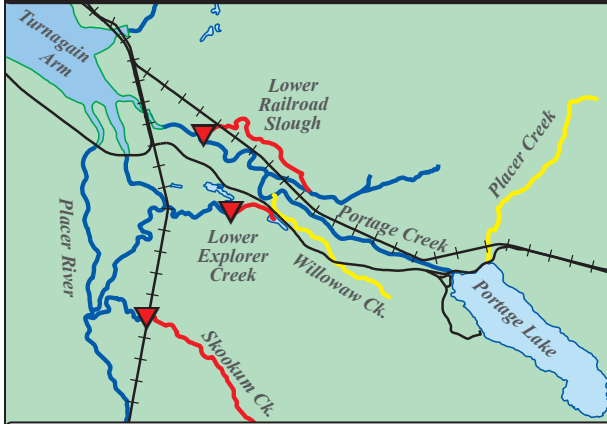
...continued



Colton Eckert, coho salmon, Bird Creek

- See bag and possession limits for species other than salmon on pages 38-39.
- See salmon bag and possession limits for Turnagain Arm Streams open to salmon fishing on page 41.

PLACER RIVER AND PORTAGE CREEK DRAINAGES



- July 14-Dec. 31: Closed to all sport fishing
- Closed year-round to all salmon fishing

GLACIER CREEK DRAINAGE - including California Creek:

- Open year-round to sport fishing for species other than salmon.
- From its mouth upstream to ADF&G markers 25 yards above the confluence of California Creek:
 - Open to sport fishing for salmon other than king salmon.
- Upstream of ADF&G markers 25 yards above the confluence of California Creek:
 - **January 1-September 30:** Open to sport fishing for salmon other than king salmon.

CALIFORNIA CREEK DRAINAGE:

- Open year-round to sport fishing for all species other than salmon.
- From its confluence with Glacier Creek upstream 25 yards to ADF&G markers above the confluence:
 - Open to sport fishing for species other than king salmon.
- Upstream of ADF&G markers 25 yards above the confluence with Glacier Creek:
 - **January 1-September 30:** Open to sport fishing for salmon other than king salmon.

INDIAN CREEK DRAINAGE:

- Downstream of the Seward Highway:
 - Open year-round to sport fishing for species other than king salmon.
- Upstream of the Seward Highway:
 - **Closed year-round to all salmon fishing.**
 - **January 1-June 30:** Open to sport fishing for species other than salmon.

INGRAM CREEK DRAINAGE:

- Open year-round to sport fishing for species other than salmon.
- From its mouth upstream to ADF&G markers about 50 yards upstream of the Seward Highway:
 - Open to sport fishing for species other than king salmon.
- Upstream of ADF&G markers about 50 yards upstream of the Seward Highway:
 - **January 1-September 30:** Open to sport fishing for salmon other than king salmon.

PLACER RIVER DRAINAGE - includes Lower Explorer Creek and Skookum Creek:

- Open year-round to sport fishing for species other than king salmon.
- Lower Explorer Creek, upstream of ADF&G markers near its confluence with Lower Explorer Pond:
 - **January 1-July 13:** Open to sport fishing for species other than king salmon.
- In Skookum Creek upstream of the Alaska Railroad Bridge:
 - **January 1-July 13:** Open to sport fishing for species other than king salmon.

PORTAGE CREEK DRAINAGE - includes Williwaw Creek and Placer Creek:

- Excluding Lower Railroad Slough, Williwaw Creek, and Placer Creek:
 - Open year-round to sport fishing for species other than king salmon.
- In all waters of Lower Railroad Slough that enter Portage Creek from the north about 2 miles upstream of the Seward Highway, upstream of ADF&G markers at its confluence with Portage Creek:
 - **January 1-July 13:** Open to sport fishing for species other than king salmon.

WILLIWAW CREEK:

- **Closed year-round to all salmon fishing.**
- **September 16-June 30:** Open to sport fishing for species other than salmon.
- **July 1-September 15:** **Closed to all sport fishing.**

PLACER CREEK DRAINAGE (all Bear Valley streams):

- **Closed year-round to all salmon fishing.**
- Open year-round to sport fishing for species other than salmon.

TWENTYMILE RIVER DRAINAGE - includes the Upper Carmen River and Glacier River:

- From its mouth upstream to ADF&G markers about 10 miles upstream of the Seward Highway:
 - Open year-round to sport fishing for species other than king salmon.
- Upstream of ADF&G markers about 10 miles upstream of the Seward Highway:
 - **January 1-July 13:** Open to sport fishing for species other than king salmon.
 - **July 14-December 31:** **Closed to all sport fishing.**

UPPER CARMEN & GLACIER RIVER DRAINAGES:

- Upstream of ADF&G markers at their confluence:
 - **January 1-July 13:** Open to sport fishing for species other than king salmon.
 - **July 14-December 31:** **Closed to all sport fishing.**

...continued

SHIP CREEK

- Closed year-round to ALL sport fishing
 - Open year-round to sport fishing for all species.
- May 15-July 13:** Only open to sport fishing from 6 a.m. to 11 p.m. each day.

All fishing is closed above the cable crossing near the Chugach Power Plant dam.



SPECIAL REGULATIONS - SHIP CREEK

SHIP CREEK:

- There is a combined annual limit of 5 king salmon 20 inches or longer from the waters of the following areas: Cook Inlet Salt Waters, West Cook Inlet, Susitna River Drainage, Knik Arm, Anchorage Bowl, Kenai River and Kenai Peninsula.
- You must not remove a king salmon from the water before releasing it.
- A king salmon 20 inches or longer that is removed from the water must be retained and becomes part of the bag limit of the person who originally hooked the fish.
- **From the mouth of Ship Creek upstream to a point 100 feet downstream of the Chugach power plant dam (marked by a cable stretched across the creek):**
 - Open year-round to sport fishing for all species.
 - **January 1-July 13:** If you retain a king salmon 20 inches or longer, you may **NOT** fish for any species of fish that same day in waters open to king salmon sport fishing.
 - **May 15-July 13: Sport fishing is only allowed from 6 a.m. to 11 p.m. each day.**
 - **July 14-December 31:** If you retain a king salmon 20 inches or longer, you may continue to fish.
- **King salmon:**
 - **20 inches or longer:** 1 per day, 1 in possession.
 - If you retain a king salmon 20 inches or longer, you must immediately record that harvest. See page 4 for recording instructions.
 - **Less than 20 inches:** 10 per day, 10 in possession.

Ship Creek continued...

- **Chum, coho, pink, and sockeye salmon (combo):**
 - **16 inches or longer:** 3 per day, 3 in possession, all 3 may be coho salmon.
 - **Less than 16 inches:** 10 per day, 10 in possession.
- **From a point 100 feet downstream of the Chugach power plant dam (marked by a cable stretched across the creek) upstream to the Elmendorf power plant dam:**
 - **Closed year-round to all sport fishing.**

SHIP CREEK YOUTH-ONLY FISHERY:

- **From the upstream side of the C Street Bridge upstream to the downstream side of the restaurant bridge:**
 - **Saturday, June 20, 2026:** If you are 15 years of age or younger, you may fish for king salmon in this section from 6 a.m. to 11 p.m. on the third Saturday in June.
 - Anglers 16 years of age and older may **NOT** sport fish in the Youth-Only section on the day and time listed above.
- **Youth-Only Fishery king salmon:**
 - **20 inches or longer:** 1 per day, 1 in possession.
 - If you retain a king salmon 20 inches or longer, you must immediately record that harvest. See page 4 for recording instructions.
 - If you retain a king salmon 20 inches or longer, you may not fish for any species of fish that same day in waters open to king salmon sport fishing.
 - **Less than 20 inches:** 10 per day, 10 in possession.