



GENERAL REGULATIONS - PRINCE WILLIAM SOUND

Inclusive waters: All fresh waters draining into Prince William Sound from Cape Fairfield to Cape Suckling, excluding the Copper River drainage upstream of a line crossing the Copper River between the south bank of the confluence of Haley Creek and the south bank of the confluence of Canyon Creek in Wood's Canyon. Salt waters within 200 miles of shore from Cape Suckling to Cape Fairfield.

Fishing is open year-round for all species unless otherwise noted below or in special regulations.

April 15-June 14: Only unbaited artificial lures or flies are allowed in the fresh waters of Prince William Sound.

Check for emergency orders online at www.adfg.alaska.gov/sf/EONR prior to fishing.

Snagging is legal year-round in Prince William Sound salt waters, except for the Whittier Small Boat Harbor and the Cordova Terminal Harvest Area.

Gaffs may not be used to puncture any fish intended or required to be released.

KING SALMON

- Please check for king salmon restrictions or contact the local ADF&G for more info.
- No annual limit or recording requirement, but a king stamp is required.



Charter operators and their crew are prohibited from keeping king salmon while clients are on board.

- **Fresh waters:**
 - 20 inches or longer: 2 per day, 4 in possession.
 - Less than 20 inches: 10 per day, 10 in possession.

• Salt waters:

- 2 per day, 4 in possession, no size limit.

CHUM, COHO, PINK, & SOCKEYE SALMON (COMBO)

• Fresh waters:

- 6 per day, 12 in possession, only 3 per day, 3 in possession may be coho salmon, no size limit.

• Salt waters:

- 6 per day, 12 in possession, only 3 per day, 3 in possession may be coho salmon, no size limit.
- Pink and chum salmon taken in a sport fishery may be used as bait, but are part of your bag limit. Pink or chum salmon used as bait must not be alive.

LAKE TROUT

- 2 per day, 2 in possession, no size limit.

RAINBOW/STEELHEAD & CUTTHROAT TROUT (COMBO)

- In unstocked lakes and ponds, all flowing waters, and in salt waters:

- **June 15-April 14:** 2 per day, 2 in possession, 11 inch minimum and 16 inch maximum.

- In stocked lakes (see pages 86-87):

- 10 per day, 10 in possession, no size limit.

ARCTIC CHAR/DOLLY VARDEN (COMBO)

- 10 per day, 10 in possession, no size limit.

ARCTIC GRAYLING

- 10 per day, 10 in possession, no size limit.

SPINY DOGFISH

- 5 per day, 5 in possession, no size limit.

SHARKS (EXCEPT SPINY DOGFISH)

- 1 per day, 1 in possession, no size limit.
- There is an annual limit of 2 sharks. See page 5 for harvest recording instructions.

LINGCOD

- **July 1-December 31:** 1 per day, 1 in possession, minimum 35 inches long with head attached, or 28 inches or greater in length with head removed.

Anglers must carry a deepwater release device onboard their vessel and have it readily available when sport fishing in salt water and will be required to use the device to release rockfish that are not harvested at depth of capture or 100 feet. For more info on deepwater release devices, see page 91.

Examples of Rockfish Release Devices



ROCKFISH

- 3 per day, 6 in possession, only 1 per day, 1 in possession may be a nonpelagic rockfish.
- **January 1-June 30: No retention of Yelloweye rockfish.**
- See the rockfish identification chart on page 90.
- **Charter operators and their crew are prohibited from keeping rockfish while clients are on board.**

HALIBUT

Pacific halibut fisheries are managed by the federal government under international treaty. See page 7.

- **February 1-December 31:** Open to halibut fishing.
- **Unguided anglers:** 2 per day, 4 in possession.
- Consult federal regulations for bag, possession and size limits and other regulations for guided (charter) anglers.
- **Filleting requirements for fish cleaned at sea:** No person shall possess on board a vessel, including charter vessels and pleasure craft used for fishing, Pacific halibut that have been filleted, mutilated, or otherwise disfigured in any manner, except that each Pacific halibut may be cut into no more than 2 ventral pieces, 2 dorsal pieces, and 2 cheek pieces, with a patch of skin on each piece, naturally attached.

OTHER FINFISH

- No limit.

SHELLFISH

- See pages 81-84.

FRESH WATER SPECIAL REGULATIONS - PRINCE WILLIAM SOUND

COPPER RIVER HIGHWAY STREAMS - All fresh water drainages crossed by the Copper River Highway from and including Eyak River to the Million Dollar Bridge, including Clear Creek (Mile 42):

- Chum, coho, pink, and sockeye salmon (combo): 3 per day, 3 in possession, no size limit.
- Coho (silver) salmon: Open year-round to coho salmon fishing.
- **August 15-September 15:** If you harvest a bag limit of coho salmon, you may not sport fish with bait for the rest of that day in these waters.
- A coho salmon that is removed from the water must be retained and becomes part of the daily bag limit of the person who originally hooked the fish. You must not remove a coho salmon from the water before releasing it.

ECCLES CREEK (Whitshed Road):

- **Closed year-round to all salmon fishing.**

EYAK LAKE - including tributaries:

- **Closed year-round to all salmon fishing.**

EYAK RIVER - from a point 200 yards upstream from Eyak Lake dam to a point 200 yards downstream from the Bridge at the outlet of Eyak Lake:

- **June 1-September 30:** Only single-hook, artificial flies with a hook gap of $\frac{3}{8}$ inch or less between point and shank are allowed. No additional weight may be attached to the line.
- Chum, coho, pink, and sockeye salmon (combo): 3 per day, 3 in possession, no size limit.

FLEMING SPIT LAGOON:

- See salt water special regulations on the next page for the Cordova Terminal Harvest Area.

HARTNEY CREEK (upstream from Whitshed Road):

- **Closed year-round to all salmon fishing.**

IBECK CREEK:

- Upstream from ADF&G markers located approximately 3 miles upstream of the Copper River Highway Bridge:
- **Closed year-round to all sport fishing.**

JOHNSTONE BAY FRESH WATERS:

- Chum, coho, pink, and sockeye salmon (combo): 3 per day, 3 in possession, only 2 per day, 2 in possession may be coho salmon.

ROBE RIVER AND ROBE LAKE:

- Open year-round to sport fishing for species other than salmon.
- Upstream of the Richardson Highway (including Robe Lake):
 - **Closed year-round to all salmon fishing.**
- Downstream from Richardson Highway to ADF&G markers approximately 300 feet downstream of its confluence with the Lowe River:
 - Only single-hook, artificial flies with a hook gap of $\frac{3}{8}$ inch or less between point and shank are allowed.
 - Chum, coho, pink, and sockeye salmon (combo): 3 per day, 3 in possession, only 1 per day, 1 in possession may be a sockeye salmon and only 1 per day, 1 in possession may be a coho salmon.
- Downstream from the ADF&G markers on the Lowe River (located approximately 300 feet downstream of its confluence with the Robe River):
 - Open year-round to sport fishing for species other than salmon.

SHELTER BAY FRESH WATERS - all fresh waters draining into Shelter Bay:

- Chum, coho, pink, and sockeye salmon (combo): 6 per day, 12 in possession, only 1 per day, 1 in possession may be coho salmon.

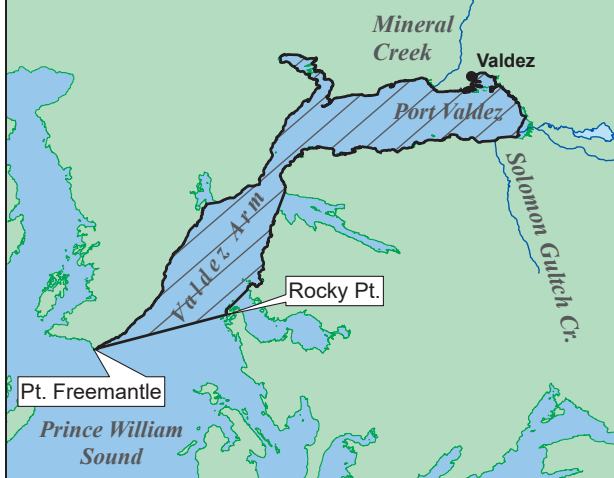
SOLOMON GULCH CREEK:

- Downstream from an ADF&G marker 300 feet downstream of the VFDA weir:
 - Open to salmon fishing. See Prince William Sound general regulations on pages 74.

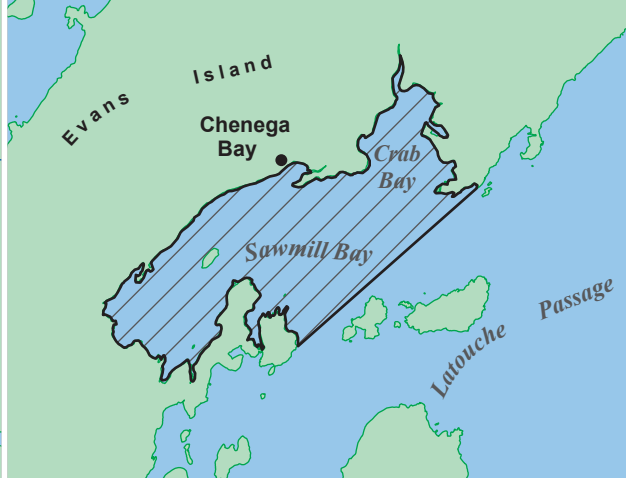
VALDEZ AREA FRESH WATERS - including all fresh waters draining into Port Valdez inside of a line from Allison Point to Mineral Creek, including Mineral Creek (except the Robe River and Solomon Gulch Creek):

- **Closed year-round to all salmon fishing.**

VALDEZ TERMINAL HARVEST AREA

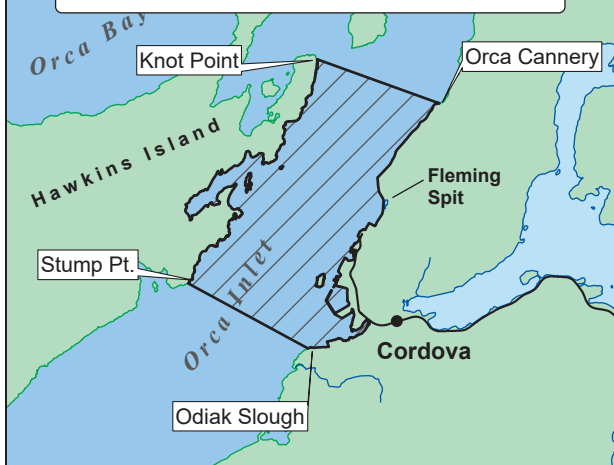


CHENEGA TERMINAL HARVEST AREA

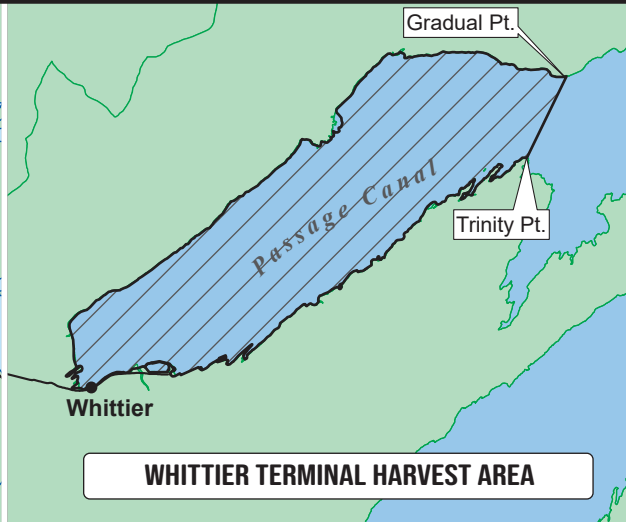


PRINCE WILLIAM SOUND TERMINAL HARVEST AREAS

CORDOVA TERMINAL HARVEST AREA



WHITTIER TERMINAL HARVEST AREA



SALT WATER SPECIAL REGULATIONS - PRINCE WILLIAM SOUND

CHENEGA TERMINAL HARVEST AREA - all marine waters inside the entrance of Sawmill and Crab bays (Evans Island):

- Chum, coho, pink, and sockeye salmon (combo):
- 6 per day, 12 in possession, no size limit.

CORDOVA TERMINAL HARVEST AREA - all marine waters north of a line from Odiak Slough to Stump Point, and south of a line from Orca Cannery to Knot Point, including the waters of Fleming Spit Lagoon:

- **June 1-September 30: Closed to snagging.**
- Chum, coho, pink, and sockeye salmon (combo):
- 6 per day, 12 in possession, no size limit.

ESTHER ISLAND (LAKE BAY):

- Salt waters inside ADF&G markers 100 feet seaward of the Esther Island brood stock holding facility:
- **Closed year-round to all sport fishing.**

MAIN BAY:

Sport fishing within 200 feet of the Prince William Sound Aquaculture hatchery barrier seine, or anywhere inside the barrier seine is prohibited. When the barrier seine is not present, anglers may fish to within 300 feet of the Prince William Sound Aquaculture fish ladder.

SHELTER BAY (Hinchinbrook Island):

- Chum, coho, pink, and sockeye salmon (combo):
- 6 per day, 12 in possession, only 1 of which may be a coho salmon.

VALDEZ TERMINAL HARVEST AREA - all marine waters north of a line from Point Freemantle to Rocky Point, excluding Jack, Galena, and Sawmill bays:

- Chum, coho, pink, and sockeye salmon (combo):
- 6 per day, 12 in possession, no size limit.

WHITTIER TERMINAL HARVEST AREA - all marine waters west of a line from Trinity Point to Gradual Point:

- Chum, coho, pink, and sockeye salmon (combo):
- 6 per day, 12 in possession, no size limit.
- **Whittier Small Boat Harbor:**
- **Closed to snagging.**