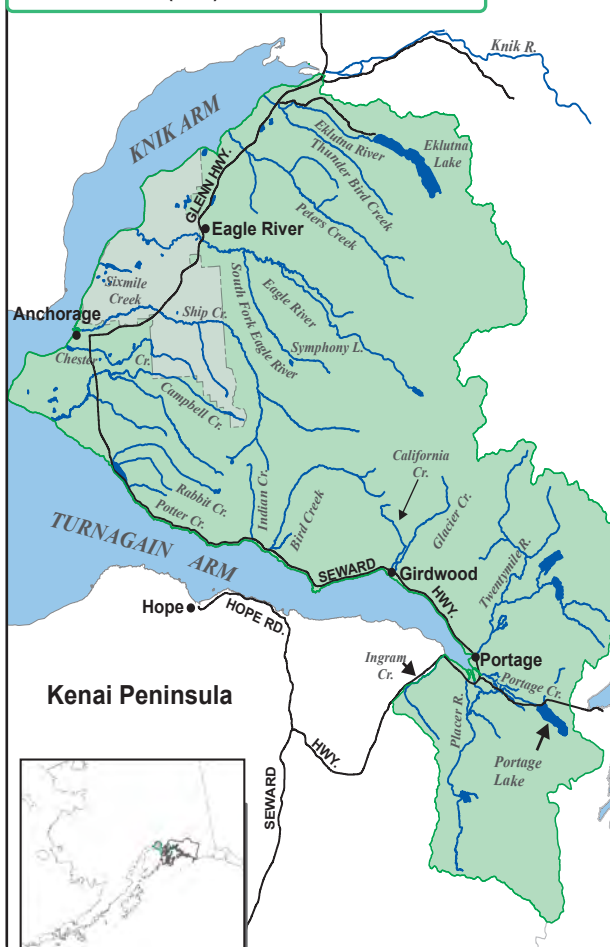


Questions? Please contact the Anchorage area office at (907) 267-2218.



To fish on Joint Base Elmendorf-Richardson (JBER):

- Go to www.jber.recaccess.com to register and obtain a permit.
- Areas on Elmendorf and training areas north of the Glenn Highway need a Department of Defense identification card, or to be accompanied by a person possessing a DoD ID in addition to a recreation permit.
- Training areas south of the Glenn Highway remain open for recreational purposes to the public without base access credentials, but still require a recreation permit.

GENERAL REGULATIONS - ANCHORAGE

Inclusive waters: All waters draining into the east side of Knik Arm south of, and including, the Eklutna River drainage, and all waters draining into the north and west sides of Turnagain Arm, and all waters draining into the south side of Turnagain Arm east of, and including Ingram Creek.

Fishing is open year-round for all species unless otherwise noted below or in special regulations.

Check for emergency orders online at www.adfg.alaska.gov/sf/EONR prior to fishing.

KING SALMON

- **Please check emergency orders for king salmon restrictions or contact the local ADF&G office for more info.**
- **The fresh waters of the Anchorage Bowl are closed to king salmon fishing**, except a section of Campbell Creek (during the Youth-Only Fishery), Eagle River, Ship Creek, and stocked lakes, see special regulations.
- **In stocked lakes:** 5 per day, 5 in possession in combination with other salmon. See pages 86-87.
- **In Anchorage Bowl waters open to king salmon fishing:**
 - There is a combined annual limit of 5 king salmon 20 inches or longer from the waters of the following areas: Cook Inlet Salt Waters, West Cook Inlet, Susitna River Drainage, Knik Arm, Anchorage Bowl, Kenai River and Kenai Peninsula.
 - You must not remove a king salmon from the water before releasing it.
 - A king salmon 20 inches or longer that is removed from the water must be retained and becomes part of the bag limit of the person who originally hooked the fish.

CHUM, COHO, PINK & SOCKEYE SALMON (COMBO)

- **In stocked lakes:** 5 per day, 5 in possession, in combination with king salmon. See pages 86-87.
- **In unstocked lakes, ponds, and in all flowing waters: Closed to all salmon fishing**, unless allowed under special regulations.
- A coho (silver) salmon 16 inches or longer that is removed from the water must be retained and becomes part of the bag limit of the person who originally hooked the fish. You must not remove a coho salmon 16 inches or longer from the water before releasing it.

RAINBOW/STEELHEAD TROUT (COMBO)

- **In stocked waters:** 5 per day, 5 in possession, only 1 of which may be 20 inches or longer. See pages 86-87.
- **In other lakes, ponds, and in all unstocked flowing waters:** 2 per day, 2 in possession, only 1 of which may be 20 inches or longer.
- **20 inches or longer:**
 - There is a total annual limit of 2 rainbow/steelhead trout 20 inches or longer taken north of the latitude of Point Adam, from the waters of the following areas: West Cook Inlet, Susitna River Drainage, Knik Arm, Anchorage Bowl, Kenai Lake drainages, Kenai River tributaries, and Kenai Peninsula.
 - If you retain a rainbow/steelhead trout 20 inches or longer you must immediately record that harvest. See page 5 for recording instructions.

ARCTIC CHAR/DOLLY VARDEN (COMBO)

- **In stocked lakes:** 5 per day, 5 in possession. See pages 86-87.
- **In other lakes, ponds, and in all flowing waters:** 5 per day, 5 in possession, only 1 of which may be 12 inches or longer.

ARCTIC GRAYLING

- **In stocked lakes:** 5 per day, 5 in possession. See pages 86-87.
- **In other lakes, ponds, and in all flowing waters:** 2 per day, 2 in possession, no size limit. See special regulations for Symphony Lake. ...continued

CAMPBELL CREEK DRAINAGE

April 15-June 14: Entire drainage is closed to all fishing

- Closed year-round to all sport fishing
- July 14-Sept. 30: Open to coho salmon fishing
- July 14-Sept. 30: Open to coho salmon fishing
- Oct. 1-July 13: Closed to all sport fishing
- Catch-and-release fishing for rainbow trout



NORTHERN PIKE

- No limit.
- **Live Release Prohibited.** You are not allowed to release live pike back into the water. Pike not retained for personal use may be disposed of through lawful and safe methods, including returning dead pike to the water.
- Northern pike may be taken by spear, sport fishing gear, ice fishing gear, or by bow and arrow (the arrow must be attached to the bow with a line and the arrow must have a barbed tip).
- When fishing through the ice for northern pike, you may use two hooks on a single line, provided that both hooks are attached to one single piece of bait.

LAKE TROUT

- 2 per day, 2 in possession, no size limit.

OTHER FINFISH

- No limit.

METHODS AND MEANS - ANCHORAGE

THE USE OF BAIT:

- Bait and multiple hooks are allowed unless prohibited in special regulations.

SPECIAL REGULATIONS - ANCHORAGE

BIRD CREEK DRAINAGE:

- **January 1-July 13: Closed to all sport fishing.**
- **July 14-December 31:** Open to sport fishing for species other than king salmon.
- **From its mouth upstream approximately 500 yards to an ADF&G marker:**
 - **July 14-December 31:** Open to sport fishing for species other than king salmon.
 - Chum, coho, pink, and sockeye salmon (combo):
 - 16 inches or longer: 3 per day, 3 in possession.
 - Less than 16 inches: 10 per day, 10 in possession.
- **Upstream from an ADF&G marker approximately 500 yards upstream of its mouth:**
 - **July 14-December 31:** Open to sport fishing for species other than salmon.

Bird Creek Drainage continued...

- **Upstream of the marker placed upstream of the Seward Highway Bridge, all land is privately owned.**

Private land on the Bird Creek drainage begins approximately 100 yards downstream of the ADF&G markers on both sides of the creek. For legal public access upstream of the private property boundary, anglers must remain in the streambed.

CAMPBELL CREEK DRAINAGE:

- **April 15-June 14: Closed to all sport fishing.**
- From its mouth upstream to ADF&G markers under the Dimond Boulevard Bridge - including Campbell Lake:
 - **Closed year-round to all sport fishing.**
- From ADF&G markers under the Dimond Boulevard Bridge upstream to ADF&G markers near Shelikof Street and upstream from ADF&G markers near the forks at Piper Street:
 - **June 15-April 14:** Open to sport fishing. Below are open salmon fishing seasons and limits.
 - Rainbow/steelhead trout (in areas open to retention): 5 per day, 5 in possession, only 1 of which may be 20 inches or longer. See annual limit and recording requirement on page 38.
 - **No retention of rainbow/steelhead trout above ADF&G markers near the forks at Piper Street.** See tackle restrictions for this area on the next page.
 - Arctic Char/Dolly Varden: 5 per day, 5 in possession, only 1 of which may be 12 inches or longer.
- From ADF&G markers under the Dimond Boulevard Bridge to ADF&G markers near Shelikof Street:
 - **July 14-September 30:** Open to coho salmon fishing.
 - Coho salmon: 3 per day, 3 in possession.
 - **Closed year-round to sport fishing for salmon other than coho salmon.**
- From ADF&G markers near Shelikof Street upstream to ADF&G markers on the upstream side of the Lake Otis Parkway Bridge:
 - **Closed year-round to all sport fishing.**

Campbell Creek Drainage continued...

- From ADF&G markers on the upstream side of the Lake Otis Parkway Bridge to an ADF&G marker located near Piper Street:
 - Closed year-round to sport fishing for salmon other than coho salmon.
 - **July 14-September 30:** Open to coho salmon fishing.
 - Coho salmon: 3 per day, 3 in possession.
 - **October 1-July 13:** Closed to all sport fishing.
- Upstream of the forks near Piper Street:
 - Closed year-round to all salmon fishing.
 - Only one unbaited, single-hook, artificial lure or fly is allowed.
 - Rainbow/steelhead trout: Catch-and-release fishing only. All rainbow/ steelhead trout caught must be released immediately.



CAMPBELL CREEK YOUTH-ONLY FISHERY:
Please check emergency orders for king salmon restrictions and bait restrictions or contact the local ADF&G office for more info.

From ADF&G markers under the Dimond Boulevard Bridge to the Old Seward Highway:

- If you are 15 years of age or younger, you may fish for king salmon from 6 a.m. to 10 p.m. on the last Saturday and Sunday of June each year. In 2025, this will be Saturday, June 28 and Sunday, June 29.
- Anglers 16 years of age and older may NOT sport fish in Campbell Creek from ADF&G markers under the Dimond Boulevard Bridge to the Old Seward Highway between during this time.
- Youth-Only king salmon:
 - 20 inches or longer: 1 per day, 1 in possession.
 - Anglers who retain a king salmon 20 inches or longer must immediately record that harvest. See page 5 for recording instructions.
 - If you retain a king salmon 20 inches or longer, you may not fish for any species of fish that same day in waters open to king salmon sport fishing.
 - Less than 20 inches: 10 per day, 10 in possession.

CHESTER CREEK DRAINAGE - includes east and west Chester Lagoon and University Lake:

- Closed year-round to all salmon fishing.
- **June 15-April 14:** Open to sport fishing for species other than salmon.
- Rainbow/steelhead trout: 5 per day, 5 in possession, only 1 of which may be 20 inches or longer. Harvest record required, see page 38.

EAGLE RIVER DRAINAGE:

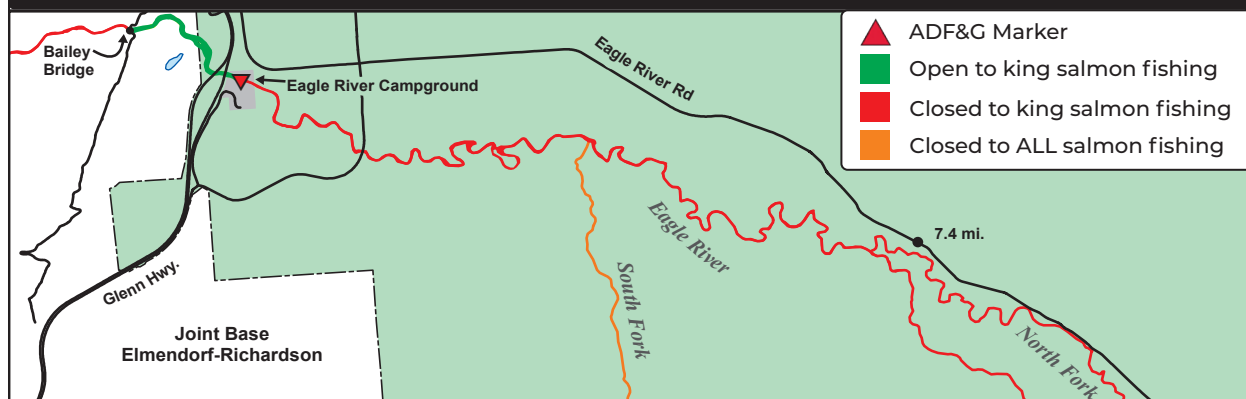
- Please check emergency orders for king salmon closures and bait restrictions or contact the local ADF&G office for more info.
- In Eagle River waters open to salmon fishing:
 - Chum, coho, pink, and sockeye salmon (combo):
 - 16 inches or longer: 3 per day, 3 in possession, only 2 per day, 2 in possession may be coho salmon.
 - Less than 16 inches: 10 per day, 10 in possession.
- From its mouth upstream to the Route Bravo Bridge on Joint Base Elmendorf-Richardson:
 - Closed year-round to all sport fishing.
- From the Route Bravo Bridge upstream to ADF&G markers at Mile 7.4 of the Eagle River Road, including waters within 100 yards of its confluence with the South Fork (but not including South Fork):
 - Open year-round to sport fishing for species other than king salmon.
- From Bailey Bridge on Fort Richardson upstream to ADF&G markers in the Alaska State Parks' Eagle River Campground:

June 17 - May 23	Open to species other than king salmon.
May 24 - May 26	Open to all species, including king salmon.
May 27 - May 30	Open to species other than king salmon.
May 31 - June 2	Open to all species, including king salmon.
June 3 - June 6	Open to species other than king salmon.
June 7 - June 9	Open to all species, including king salmon.
June 10 - June 13	Open to species other than king salmon.
June 14 - June 16	Open to all species, including king salmon.

- King salmon: 1 per day, 1 in possession, 20 inches or longer.
- There is an annual limit of 2 king salmon 20 inches or longer from the waters of this area.
 - If you retain a king salmon 20 inches or longer, you must immediately record that harvest. See page 5 for recording instructions.
- If you retain a king salmon 20 inches or longer, you may not fish for any species of fish that same day in waters open to king salmon sport fishing.
- From the ADF&G markers at Mile 7.4 of the Eagle River Road upstream, and the North Fork and its tributaries (but not including South Fork):
 - **September 16-May 31:** Open to sport fishing for salmon other than king salmon.

...continued

EAGLE RIVER - FROM ROUTE BRAVO BRIDGE UPSTREAM TO ROAD MILE 7.4



SOUTH FORK EAGLE RIVER:

- From its confluence with Eagle River upstream to the falls:
 - **Closed year-round to all salmon fishing.**
 - Open year-round to sport fishing for species other than salmon.
- From the falls upstream:
 - Open to sport fishing. See general regulations on pages 38-39.

EKLUTNA RIVER DRAINAGE - including Eklutna Lake: (The Eklutna Tailrace is part of a different drainage. See page 34 for more info.):

- Chum and pink salmon (combo):
 - 16 inches or longer: 3 per day, 3 in possession.
 - Less than 16 inches: 10 per day, 10 in possession.
- From its mouth upstream to the Glenn Highway Bridge:
 - Open to sport fishing for species other than king, sockeye, and coho salmon.
- Upstream of the Glenn Highway Bridge:
 - **January 1-September 30:** Open to sport fishing for salmon other than king, sockeye, and coho salmon.

GLACIER CREEK DRAINAGE - including California Creek:

- Open year-round to sport fishing for species other than salmon.
- In the waters of Glacier Creek and California Creek open to salmon fishing:
 - Chum, coho, pink, and sockeye salmon (combo):
 - 16 inches or longer: 3 per day, 3 in possession, only 2 per day, 2 in possession may be coho salmon.
 - Less than 16 inches: 10 per day, 10 in possession.
- From its mouth upstream to ADF&G markers 25 yards above the confluence of California Creek:
 - Open to sport fishing for salmon other than king salmon.
- From ADF&G markers 25 yards above the confluence of California Creek upstream:
 - **January 1-September 30:** Open to sport fishing for salmon other than king salmon.

CALIFORNIA CREEK DRAINAGE:

- Open year-round to sport fishing for all species other than salmon.
- From its confluence with Glacier Creek upstream 25 yards to ADF&G markers above the confluence:
 - Open to sport fishing for species other than king salmon.
- Upstream from ADF&G markers 25 yards above the confluence with Glacier Creek:
 - **January 1-September 30:** Open to sport fishing for salmon other than king salmon.

INDIAN CREEK:

- Downstream of the Seward Highway:
 - Open year-round to sport fishing for species other than king salmon.
 - Chum, coho, pink, and sockeye salmon (combo):
 - 16 inches or longer: 3 per day, 3 in possession, only 2 per day, 2 in possession may be coho salmon.
 - Less than 16 inches: 10 per day, 10 in possession.
- Upstream of the Seward Highway:
 - **Closed year-round to all salmon fishing.**
 - **January 1-June 30:** Open to sport fishing for species other than salmon.

INGRAM CREEK DRAINAGE:

- Open year-round to sport fishing for species other than salmon.
- In waters of Ingram Creek open to salmon fishing:
 - Chum, coho, pink, and sockeye salmon (combo):
 - 16 inches or longer: 3 per day, 3 in possession, only 2 per day, 2 in possession may be coho salmon.
 - Less than 16 inches: 10 per day, 10 in possession.
- From its mouth upstream to ADF&G markers about 50 yards upstream of the Seward Highway:
 - Open to sport fishing for species other than king salmon.
- Upstream of ADF&G markers about 50 yards upstream of the Seward Highway:
 - **January 1-September 30:** Open to sport fishing for salmon other than king salmon.

PETERS CREEK DRAINAGE:

- From its mouth upstream to the Glenn Highway:
 - Open year-round to sport fishing for species other than king salmon.
 - Chum, coho, pink, and sockeye salmon (combo):
 - 16 inches or longer: 3 per day, 3 in possession, only 2 per day, 2 in possession may be coho salmon.
 - Less than 16 inches: 10 per day, 10 in possession.
- Upstream of the Glenn Highway:
 - Open year-round to sport fishing for species other than salmon.
 - **Closed year-round to all salmon fishing.**

...continued



Lake fishing at its finest.

PLACER RIVER AND PORTAGE CREEK DRAINAGES



PLACER RIVER DRAINAGE - includes Lower Explorer Creek and Skookum Creek:

- Open year-round to sport fishing for species other than king salmon.
- In those waters of Placer River drainage open to salmon fishing:
 - Chum, coho, pink, and sockeye salmon (combo):
 - 16 inches or longer: 3 per day, 3 in possession, only 2 per day, 2 in possession may be coho salmon.
 - Less than 16 inches: 10 per day, 10 in possession.
- Lower Explorer Creek, upstream from ADF&G markers near its confluence with Lower Explorer Pond:
 - **January 1-July 13:** Open to sport fishing for species other than king salmon.
- In Skookum Creek upstream of the Alaska Railroad Bridge:
 - **January 1-July 13:** Open to sport fishing for species other than king salmon.

PORTAGE CREEK DRAINAGE - includes Williwaw Creek and Placer Creek:

- Excluding Lower Railroad Slough, Williwaw Creek, and Placer Creek:
 - Open year-round to sport fishing for species other than king salmon.
 - Chum, coho, pink, and sockeye salmon (combo):
 - 16 inches or longer: 3 per day, 3 in possession, only 2 per day, 2 in possession may be coho salmon.
 - Less than 16 inches: 10 per day, 10 in possession.
- In all waters of Lower Railroad Slough that enter Portage Creek from the north about 2 miles upstream of the Seward Highway, upstream from ADF&G markers at its confluence with Portage Creek:
 - **January 1-July 13:** Open to sport fishing for species other than king salmon.

WILLIWAW CREEK:

- **Closed year-round to all salmon fishing.**
- **September 16-June 30:** Open to sport fishing for species other than salmon.

THE PLACER CREEK DRAINAGE (all Bear Valley streams):

- **Closed year-round to all salmon fishing.**
- Open year-round to sport fishing for species other than salmon.

POTTER CREEK/POTTER MARSH:

- **Closed year-round to all sport fishing.**

RABBIT CREEK:

- **Closed year-round to all salmon fishing.**
- From its mouth upstream to the Old Seward Highway:
 - **Closed year-round to all sport fishing.**
- Upstream of the Old Seward Highway:
 - Open year-round to sport fishing for species other than salmon.

SIXMILE CREEK - Joint Base Elmendorf-Richardson:

- Downstream of ADF&G markers located near the mouth:
 - See general regulations on page 67 for the Cook Inlet salt waters.
- From ADF&G markers located near its mouth upstream to Lower Sixmile Lake:
 - **Closed year-round to all sport fishing.**

SYMPHONY LAKE:

- **July 1-May 1:** Open to sport fishing.
- Arctic grayling: 5 per day, 5 in possession, only 1 of which may be 12 inches or longer.
- Rainbow trout: 2 per day, 2 in possession, only 1 of which may be 20 inches or longer. If you retain a rainbow trout 20 inches or longer, you must immediately record that harvest. See page 5.

TWENTYMILE RIVER DRAINAGE - includes the Upper Carmen River and Glacier River:

- From its mouth upstream to ADF&G markers about 10 miles upstream of the Seward Highway:
 - Open year-round to sport fishing for species other than king salmon.
 - Chum, coho, pink, and sockeye salmon (combo):
 - 16 inches or longer: 3 per day, 3 in possession, only 2 per day, 2 in possession may be coho salmon.
 - Less than 16 inches: 10 per day, 10 in possession.
- Upstream from ADF&G markers about 10 miles upstream of the Seward Highway:
 - **January 1-July 13:** Open to sport fishing for species other than king salmon.
 - **July 14-December 31:** **Closed to all sport fishing.**

UPPER CARMEN & GLACIER RIVER DRAINAGES:

- Upstream from ADF&G markers at their confluence:
 - **January 1-July 13:** Open to sport fishing for species other than king salmon.
 - **July 14-December 31:** **Closed to all sport fishing.**

...continued

SHIP CREEK

- Closed year-round to ALL sport fishing
- Open year-round to sport fishing for all species.
- May 15-July 13: Only open to sport fishing from 6 a.m. to 11 p.m. each day

All fishing is closed above the cable crossing near the Chugach Power Plant dam.



SHIP CREEK:

- Please check emergency orders for king and coho salmon restrictions or contact the local ADF&G office for more info.
- From the mouth of Ship Creek upstream to a point 100 feet downstream of the Chugach power plant dam (marked by a cable stretched across the creek):
 - Open year-round to sport fishing for all species.
 - January 1-July 13: If you retain a king salmon 20 inches or longer, you may **NOT** fish for any species of fish that same day in waters open to king salmon sport fishing.
 - May 15-July 13: Sport fishing is only allowed from 6 a.m. to 11 p.m. each day.
 - July 14-December 31: If you retain a king salmon 20 inches or longer, you may continue to fish.
- King salmon:
 - 20 inches or longer: 1 per day, 1 in possession.
 - If you retain a king salmon 20 inches or longer, you must immediately record that harvest. See page 5 for recording instructions.
 - Less than 20 inches: 10 per day, 10 in possession.
- Chum, coho, pink, and sockeye salmon (combo):
 - 16 inches or longer: 3 per day, 3 in possession, all 3 may be coho salmon.
 - Less than 16 inches: 10 per day, 10 in possession.
- From a point 100 feet downstream of the Chugach power plant dam (marked by a cable stretched across the creek) upstream to the Elmendorf power plant dam:
 - Closed year-round to all sport fishing.

SHIP CREEK YOUTH-ONLY FISHERY:

- From the upstream side of the C Street Bridge upstream to the downstream side of the Bridge Restaurant:
 - Saturday, June 21, 2025: If you are 15 years of age or younger, you may fish for king salmon in this section from 6 a.m. to 11 p.m. on the third Saturday in June.
 - Anglers 16 years of age and older may **NOT** sport fish in the Youth-Only section on the day and time listed above.
 - Youth-Only Fishery king salmon:
 - 20 inches or longer: 1 per day, 1 in possession.
 - If you retain a king salmon 20 inches or longer, you must immediately record that harvest. See page 5 for recording instructions.
 - If you retain a king salmon 20 inches or longer, you may not fish for any species of fish that same day in waters open to king salmon sport fishing.
 - Less than 20 inches: 10 per day, 10 in possession.



Urban fishing at its best.