

GENERAL REGULATIONS - UNIT 1

Inclusive waters: From the mouth of the Susitna River upstream to its confluence with the Deshka River (including the Deshka River drainage, but excluding the Yentna River drainage) - the waters of the Susitna River and its westside tributaries, and all eastside waters within $\frac{1}{2}$ mile of the Susitna River.

Fishing is open year-round for all species unless otherwise noted below or in special regulations.

Check for emergency orders online at www.adfg.alaska.gov/sf/EONR prior to fishing.

KING SALMON

- Please check emergency orders for king salmon closures or contact the local ADF&G office for more info.
- In all flowing waters, lakes, and ponds draining into the WEST side of the Susitna, and in all waters draining into the EAST side of the Susitna WITHIN $\frac{1}{2}$ mile of the Susitna River:
 - Season: **January 1-July 13.**
 - **May 15-July 13: In waters open to king salmon fishing, including the Deshka River, fishing is only allowed between 6 a.m. and 11 p.m. each day.**

KING SALMON continued...

- 20 inches or longer: 1 per day, 2 in possession.
 - There is a combined annual limit of 5 king salmon 20 inches or longer from the waters of the following areas: Cook Inlet Salt Waters, West Cook Inlet, Susitna River Drainage, Knik Arm, Anchorage Bowl, Kenai River, and Kenai Peninsula.
 - A king salmon 20 inches or longer that is removed from the water must be retained and becomes part of the bag limit of the person who originally hooked the fish. You must not remove a king salmon 20 inches or longer from the water before releasing it.
 - If you retain a king salmon 20 inches or longer, you must immediately record that harvest. See page 5 for recording instructions.
- Less than 20 inches: 10 per day, 10 in possession.
- In all waters draining into the east side of the Susitna more than $\frac{1}{2}$ mile from the Susitna River:
 - **Closed to king salmon fishing.**

...continued

SOCKEYE, COHO, AND CHUM SALMON

- 16 inches or longer: 3 per day, 6 in possession, in combination.
- A coho (silver) salmon 16 inches or longer that is removed from fresh water must be retained and becomes part of the bag limit of the person who originally hooked the fish. You must not remove a coho salmon 16 inches or longer from the water before releasing it.
- Less than 16 inches: 10 per day, 10 in possession.

PINK SALMON

- 6 per day, 6 in possession.

RAINBOW/STEELHEAD TROUT

- **In flowing waters:**
 - **April 15-June 14:** Catch-and-release fishing only. All rainbow/steelhead trout caught must be released immediately.
 - **June 15-April 14:** 2 per day, 2 in possession, only 1 of which may be 20 inches or longer.
- **In lakes and ponds:**
 - 2 per day, 2 in possession, only 1 of which may be 20 inches or longer.
 - 20 inches or longer:
 - There is a total annual limit of 2 rainbow/steelhead trout 20 inches or longer taken north of the latitude of Point Adam, from the waters of the following areas: West Cook Inlet, Susitna River Drainage, Knik Arm, Anchorage Bowl, Kenai Lake drainages, Kenai River tributaries, and Kenai Peninsula, except in the stocked lakes of the Knik Arm and Susitna River areas, where the annual limit is 10 rainbow/steelhead trout 20 inches or longer (see pages 86-87 for a list of stocked lakes in these areas).
 - If you retain a rainbow/steelhead trout 20 inches or longer, you must immediately record that harvest. See page 5 for recording instructions.

ARCTIC CHAR/DOLLY VARDEN

- 5 per day, 5 in possession, only 1 of which may be 12 inches or longer.

ARCTIC GRAYLING

- 2 per day, 2 in possession, no size limit.

LAKE TROUT

- 2 per day, 2 in possession, no size limit.


BURBOT

- 5 per day, 5 in possession, no size limit.
- Bait is allowed while fishing for burbot, and burbot may be taken with more than one line and hook only if:
 - The total number of aggregate hooks/lines does not exceed the daily bag limit for burbot in the water being fished;
 - The hooks are single hooks with a gap between point and shank larger than $\frac{3}{4}$ inch;
 - Each hook is set to rest on the bottom of the lake or stream; and
 - The burbot fishing gear is closely attended by the angler, except in flowing waters of the Susitna and Yentna river drainages, where lines must be tended at least once each 24 hours.
- Each line is identified with angler's name and address.
- When fishing for burbot, you must immediately release all other fish caught incidentally.

NORTHERN PIKE

- No limit.
- **Live Release Prohibited.** You are not allowed to release live pike back into the water. Pike not retained for personal use may be disposed of through lawful and safe methods, including returning dead pike to the water.
- Northern pike may be taken by spear, sport fishing gear, ice fishing gear, or by bow and arrow (the arrow must be attached to the bow with a line and the arrow must have a barbed tip).
- When fishing through the ice for northern pike, you may use two hooks on a single line, provided that both hooks are attached to one single piece of bait.

The following special rules apply to ice fishing for northern pike in the waters listed below:

- Sport fishing through the ice for northern pike is allowed using 5 lines provided that:
 - Standard ice fishing gear is used;
 - The fishing gear is closely attended, and;
 - All other species of fish caught are released immediately.
- **Alexander Creek and Lake**
- **Amber Lake**
- **Fish Creek (Lower Susitna River)**
- **Fish Creek (Kroto Slough)**
- **Kroto Lakes**
- **Ladyslipper Lake**
- **Lockwood Lake**
- **Lower and Upper Vern Lakes (Ding-Dong Lakes)**
- **Neil Lake**
- **Parker Lake**
-  **Scotty Lake**
- **Sucker Lake**
- **Trail Lake**
- **Trapper Lake**
- **Whitsol Lake**
- **Witsoe Creek**

OTHER FINFISH

- No limit.

METHODS AND MEANS - UNIT 1

TACKLE RESTRICTIONS:

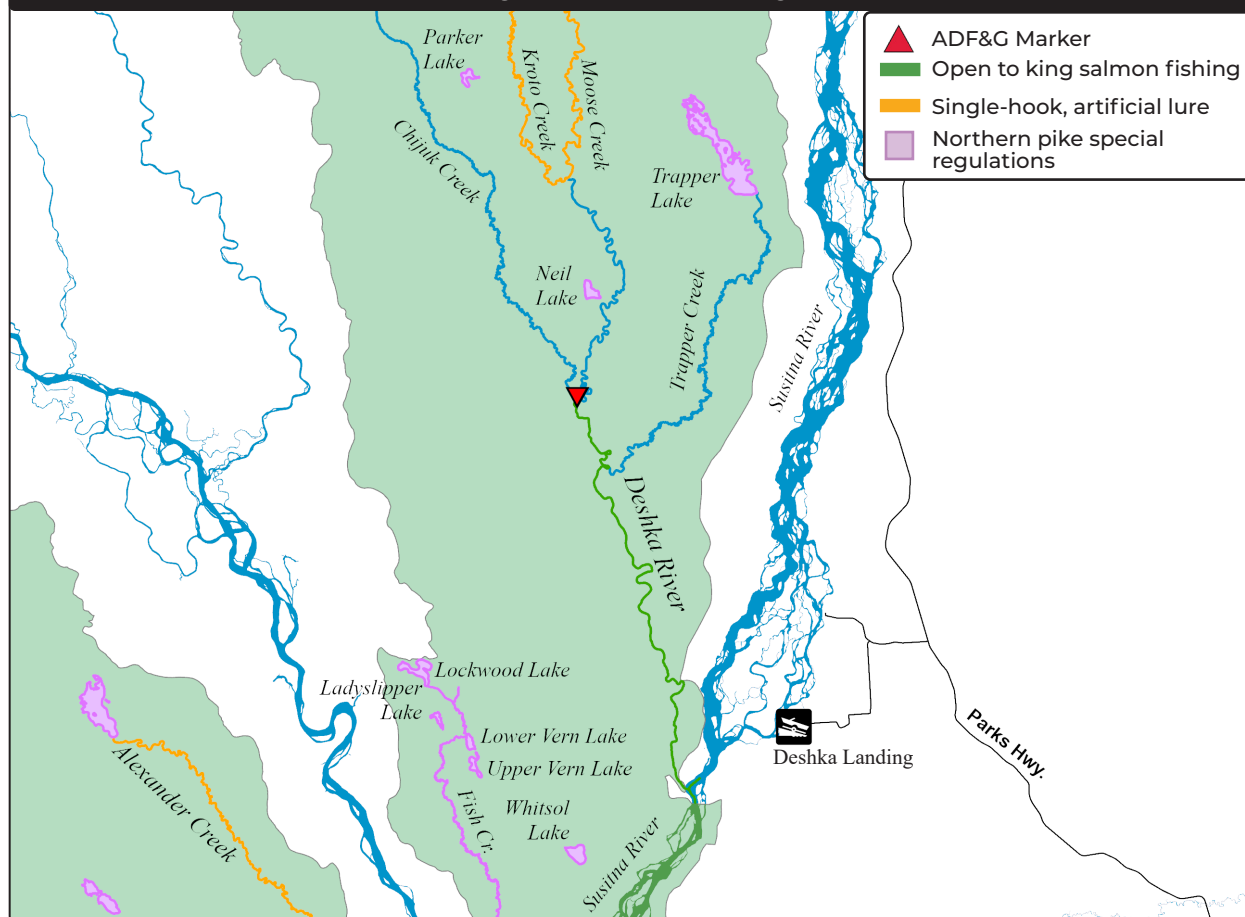
- **Flowing waters of the Susitna River drainage - from its mouth upstream to its confluence with the Deshka River:**
 - **July 14-August 31:** Bait and multiple hooks are allowed.
 - **September 1-July 13:** Only unbaited, artificial lures or flies are allowed (multiple hooks are allowed during this time).

...continued



Catch them all!

DESHKA RIVER DRAINAGE



SPECIAL REGULATIONS - UNIT 1

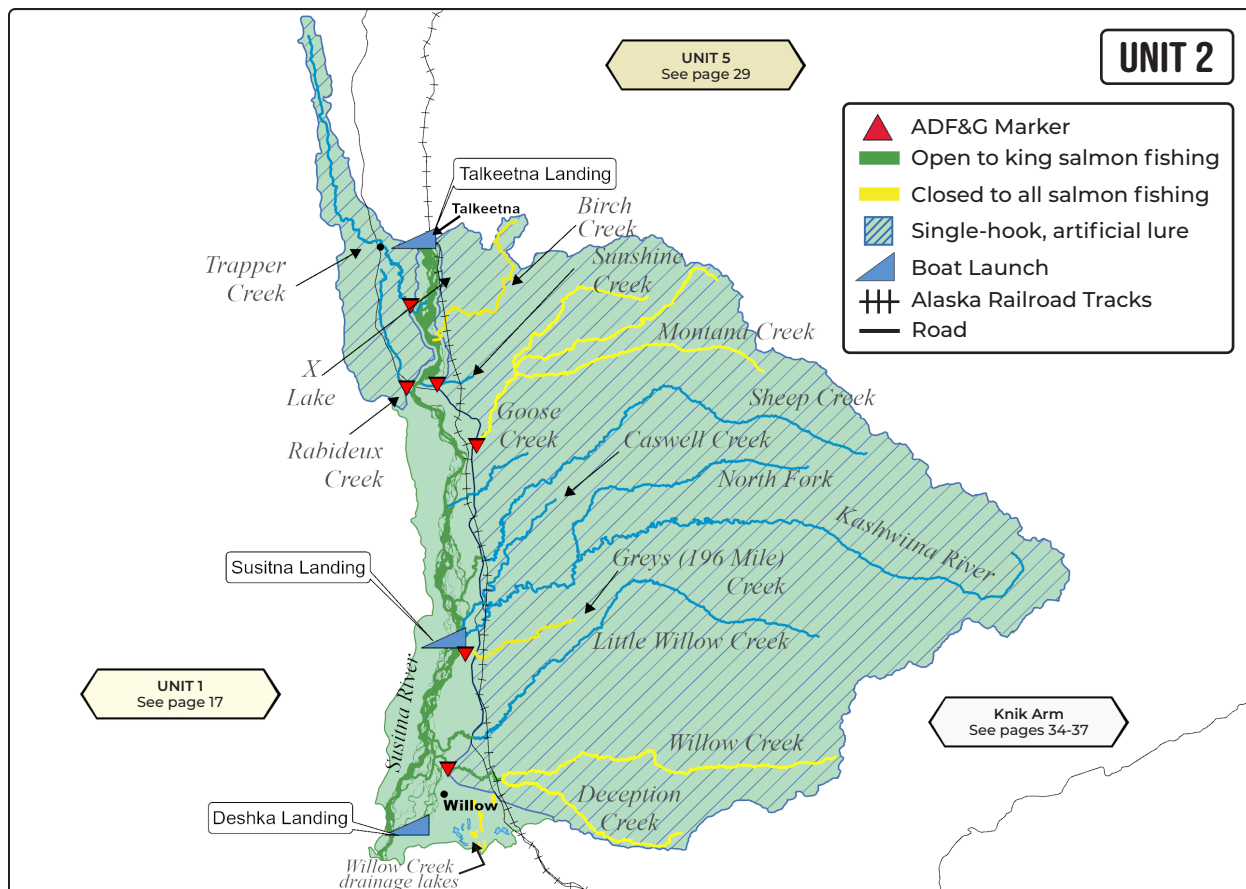
ALEXANDER CREEK DRAINAGE - includes Alexander Lake:

- Salmon (other than king and pink salmon):**
 - 16 inches or longer: 3 per day, 6 in possession, only **2 per day, 2 in possession** may be coho salmon.
 - **Pink salmon: 6 per day, 6 in possession.**
- **In all flowing waters:**
 - Rainbow/steelhead trout, Arctic char/Dolly Varden, and Arctic grayling: Catch-and-release fishing only. All rainbow/steelhead trout, Arctic char/Dolly Varden, or Arctic grayling caught must be released immediately.
- **Alexander Creek and all waters within a ½ mile radius of the stream's confluence with the Susitna River:**
 - **Closed year-round to king salmon fishing.**
 - **July 14-April 30:** Open to sport fishing for species other than king salmon following general regulations on pages 15-16.
- **All waters within a ½ mile radius of the stream's confluence with the Susitna River:**
 - **May 1-July 13:** **Closed to all sport fishing.**
- **In all flowing waters upstream of ADF&G markers 400 yards upstream from its confluence with Trail Creek:**
 - Only one unbaited, single-hook, artificial lure or fly is allowed year-round.

DESHKA RIVER DRAINAGE:

- **After retaining a king salmon 20 inches or longer, you may not fish for king salmon on that same day anywhere else.**
- **In flowing waters of the Deshka River drainage upstream of the forks at Moose/Kroto creeks:**
 - Only one unbaited, single-hook, artificial lure or fly is allowed year-round.
 - Rainbow/steelhead trout: Catch-and-release fishing only. All rainbow/steelhead trout caught must be released immediately.
- **In flowing waters of the Deshka River drainage downstream of the forks at Moose/Kroto creeks to ADF&G markers near Chijuk Creek:**
 - **September 1-July 13:** Only unbaited, artificial lures or flies are allowed.
- **The Deshka River drainage, from its mouth upstream approximately 17 miles to ADF&G markers near Chijuk Creek, and all waters within a ½-mile radius of the Deshka's confluence with the Susitna River:**
 - **May 15-July 13:** **Fishing is only allowed between 6 a.m. and 11 p.m. each day in the Deshka River.**
 - **January 1-July 13:** Open to sport fishing for all species including king salmon.
 - **June 1-August 31:** Bait and multiple hooks are allowed.
 - **September 1-May 31:** Only unbaited, artificial lures or flies are allowed.

...continued



GENERAL REGULATIONS - UNIT 2

Inclusive waters: The Susitna River drainage, from its confluence with the Deshka River, upstream to its confluence with the Talkeetna River, excluding the Talkeetna River drainage. The lower portions of most streams crossed by the Parks Highway have exceptions to the general regulations, listed on the following pages.

Fishing is open year-round for all species unless otherwise noted below or in special regulations.

Check for emergency orders online at www.adfg.alaska.gov/sf/EONR prior to fishing.

KING SALMON

- **Please check emergency orders for king salmon closures or contact the local ADF&G office for more info.**
- **Generally, Unit 2 is closed to king salmon fishing, but there are exceptions, see special regulations.**
- **In stocked lakes:** 10 per day, 10 in possession, in combination with other salmon. See pages 86-87 for a list of stocked lakes.
- **In waters where king salmon fishing is allowed, the following regulations apply:**
 - **May 15-July 13: Fishing is only allowed between 6 a.m. and 11 p.m. each day.**
 - A king salmon 20 inches or longer that is removed from the water must be retained and becomes part of the bag limit of the person who originally hooked the fish. You must not remove a king salmon 20 inches or longer from the water before releasing it.

KING SALMON continued...

- There is a combined annual limit of 5 king salmon 20 inches or longer from the waters of the following areas: Cook Inlet Salt Waters, West Cook Inlet, Susitna River Drainage, Knik Arm, Anchorage Bowl, Kenai River, and Kenai Peninsula.
- If you retain a king salmon 20 inches or longer, you must immediately record that harvest. See page 5 for recording instructions.
- After taking a king salmon 20 inches or longer, you may not fish for any species of fish in any water open to king salmon fishing during that same day.

SOCKEYE, COHO, AND CHUM SALMON

- **In stocked lakes:** 10 per day, 10 in possession, in combination with king salmon. See pages 86-87 for a list of stocked lakes.
- **In other lakes, ponds, and in all flowing waters:**
 - 16 inches or longer: 3 per day, 3 in possession, only 2 per day, 2 in possession may be coho salmon.
 - A coho (silver) salmon 16 inches or longer that is removed from the water must be retained and becomes part of the bag limit of the person who originally hooked the fish. You must not remove a coho salmon 16 inches or longer from the water before releasing it.
 - Less than 16 inches: 10 per day, 10 in possession, in combination.

PINK SALMON

- **6 per day, 6 in possession.**

ARCTIC GRAYLING

- 2 per day, 2 in possession.

...continued

ARCTIC CHAR/DOLLY VARDEN

- **In stocked lakes:** 5 per day, 5 in possession. See pages 86-87 for a list of stocked lakes.
- **In other lakes, ponds, and in all flowing waters:** 5 per day, 5 in possession, only 1 of which may be 12 inches or longer.

LAKE TROUT

- 2 per day, 2 in possession.

RAINBOW/STEELHEAD TROUT

- **In stocked lakes:** 5 per day, 5 in possession, only 1 of which may be 20 inches or longer. See pages 86-87 for a list of stocked lakes.
- **In other lakes and ponds:** 2 per day, 2 in possession, only 1 of which may be 20 inches or longer.
- **In flowing waters:**
 - **April 15-June 14:** Catch-and-release fishing only. All rainbow/steelhead trout caught must be released immediately.
 - **June 15-April 14:** 2 per day, 2 in possession, only 1 of which may be 20 inches or longer.
- 20 inches or longer:
 - There is a total annual limit of 2 rainbow/steelhead trout 20 inches or longer taken north of the latitude of Point Adam, from the waters of the following areas: West Cook Inlet, Susitna River Drainage, Knik Arm, Anchorage Bowl, Kenai Lake drainages, Kenai River tributaries, and Kenai Peninsula, except in the stocked lakes of the Knik Arm and Susitna River areas, where the annual limit is 10 rainbow/steelhead trout 20 inches or longer (see pages 86-87 for a list of stocked lakes in these areas).
 - If you retain a rainbow/steelhead trout 20 inches or longer, you must immediately record that harvest. See page 5 for recording instructions.

OTHER FINFISH

- No limit

NORTHERN PIKE

- No limit.
- **Live Release Prohibited.** You are not allowed to release live pike back into the water. Pike not retained for personal use may be disposed of through lawful and safe methods, including returning dead pike to the water.
- Northern pike may be taken by spear, sport fishing gear, ice fishing gear, or by bow and arrow (the arrow must be attached to the bow with a line and the arrow must have a barbed tip).
- When fishing through the ice for northern pike, you may use two hooks on a single line, provided that both hooks are attached to one single piece of bait.

The following special rules apply to ice fishing for northern pike in the waters listed below:

- Sport fishing through the ice for northern pike is allowed using 5 lines provided that:
 - Standard ice fishing gear is used;
 - The fishing gear is closely attended, and;
 - All other species of fish caught are released immediately.
- **Crystal Lake**
- **Long Lake**
- **Shirley Lake**

BURBOT

- 5 per day, 5 in possession, no size limit.
- Bait is allowed while fishing for burbot, and burbot may be taken with more than one line and hook only if:
 - The total number of aggregate hooks/lines does not exceed the daily bag limit for burbot in the water being fished;
 - The hooks are single hooks with a gap between point and shank larger than $\frac{3}{4}$ inch;
 - Each hook is set to rest on the bottom of the lake or stream; and
 - The burbot fishing gear is closely attended by the angler, except in flowing waters of the Susitna and Yentna river drainages, where lines must be tended at least once each 24 hours.
- Each line is identified with angler's name and address.
- When fishing for burbot, you must immediately release all other fish caught incidentally.

METHODS AND MEANS - UNIT 2**TACKLE RESTRICTIONS:**

- **June 1-July 13:** Only unbaited, artificial lures or flies are allowed.
- **July 14-August 31:** Bait and multiple hooks are allowed.
- **September 1-May 31:**
 - **In all flowing waters of Unit 2:** Only one unbaited, single-hook, artificial lure or fly is allowed.
- **In non-flowing waters:** Bait and multiple hooks are allowed year-round, unless prohibited under special regulations.

SPECIAL REGULATIONS - UNIT 2**BIRCH CREEK:**

- **From its mouth to ADF&G markers $\frac{1}{4}$ mile upstream:**

Jan. 1 - June 17	Open to all species, including king salmon.
June 18 - June 21	Open to species other than king salmon.
June 22 - June 24	Open to all species, including king salmon.
June 25 - June 28	Open to species other than king salmon.
June 29 - July 1	Open to all species, including king salmon.
July 2 - July 13	Open to species other than king salmon.
July 14 - Dec. 31	Open to all species, except king salmon.

- **King salmon:**
 - 20 inches or longer: 1 per day, 1 in possession.
 - Less than 20 inches: 10 per day, 10 in possession.
- **May 15-July 13:** Fishing is only allowed between 6 a.m. and 11 p.m. each day.
- **June 1-July 13:** Only unbaited, artificial lures or flies are allowed (multiple hooks are allowed during this time).
- **July 14-August 31:** Bait and multiple hooks are allowed.
- **September 1-May 31:** Only one, unbaited, single-hook artificial lure or fly is allowed.
- **Upstream from ADF&G markers $\frac{1}{4}$ mile upstream from its mouth:**
 - **Closed year-round to all salmon fishing.**
 - Open year-round to sport fishing for all species other than salmon.
 - Only one unbaited, single-hook, artificial lure or fly is allowed year-round.

...continued

CASWELL, LITTLE WILLOW, AND SHEEP CREEK DRAINAGES:

- From its mouth upstream to the Parks Highway Bridge:

Jan. 1 - June 17	Open to all species, including king salmon.
June 18 - June 21	Open to species other than king salmon.
June 22 - June 24	Open to all species, including king salmon.
June 25 - June 28	Open to species other than king salmon.
June 29 - July 1	Open to all species, including king salmon.
July 2 - July 13	Open to species other than king salmon.
July 14 - Dec. 31	Open to all species, except king salmon.

- King salmon:
 - 20 inches or longer: 1 per day, 1 in possession
 - Less than 20 inches: 10 per day, 10 in possession.
- **May 15-July 13:** Fishing is only allowed between 6 a.m. and 11 p.m. each day.
- **June 1-July 13:** Only unbaited, artificial lures or flies are allowed (multiple hooks are allowed during this time).
- **July 14-August 31:** Bait and multiple hooks are allowed.
- **September 1-May 31:** Only one, unbaited, single-hook artificial lure or fly is allowed.
- **Upstream of the Parks Highway Bridge:**
 - Open year-round to sport fishing for all species other than king salmon following general regulations (on pages 18-19).
 - Only one unbaited, single-hook, artificial lure or fly is allowed year-round.

GOOSE CREEK:

- From its mouth upstream to the Parks Highway Bridge:
 - Open year-round to sport fishing for species other than king salmon.
 - **Closed year-round to king salmon fishing.**
 - **May 15-July 13:** Fishing is only allowed between 6 a.m. and 11 p.m. each day.
 - **June 1-July 13:** Only unbaited, artificial lures or flies are allowed (multiple hooks are allowed during this time).
 - **July 14-August 31:** Bait and multiple hooks are allowed.
 - **September 1-May 31:** Only one unbaited, single-hook artificial lure or fly is allowed.
- **Upstream of the Parks Highway Bridge:**
 - Open year-round to sport fishing for all species other than king salmon following general regulations (on pages 18-19).
 - Only one, unbaited, single-hook artificial lure or fly is allowed.

GREYS (196 MILE) CREEK:

- From its mouth to ADF&G markers ¼ mile upstream:

Jan. 1 - June 17	Open to all species, including king salmon.
June 18 - June 21	Open to species other than king salmon.
June 22 - June 24	Open to all species, including king salmon.
June 25 - June 28	Open to species other than king salmon.
June 29 - July 1	Open to all species, including king salmon.
July 2 - July 13	Open to species other than king salmon.
July 14 - Dec. 31	Open to all species, except king salmon.

Greys (196 Mile) Creek continued...

- King salmon:
 - 20 inches or longer: 1 per day, 1 in possession.
 - Less than 20 inches: 10 per day, 10 in possession.
- **May 15-July 13:** Fishing is only allowed between 6 a.m. and 11 p.m. each day.
- **June 1-July 13:** Only unbaited, artificial lures or flies are allowed (multiple hooks are allowed during this time).
- **July 14-August 31:** Bait and multiple hooks are allowed.
- **September 1-May 31:** Only one unbaited, single-hook artificial lure or fly is allowed.
- **Upstream of the ADF&G markers located ¼ mile upstream from its mouth:**
 - **Closed year-round to all salmon fishing.**
 - **April 15-June 14:** Closed to all sport fishing.
 - **January 1-April 14 and June 15-December 31:** This section is open to sport fishing for all species other than salmon.
- **Upstream of the Parks Highway Bridge:**
 - Only one unbaited, single-hook, artificial lure or fly is allowed year-round.

KASHWITNA RIVER DRAINAGE:

- From its mouth upstream to the Alaska Railroad Bridge:

Jan. 1 - June 17	Open to all species, including king salmon.
June 18 - June 21	Open to species other than king salmon.
June 22 - June 24	Open to all species, including king salmon.
June 25 - June 28	Open to species other than king salmon.
June 29 - July 1	Open to all species, including king salmon.
July 2 - July 13	Open to species other than king salmon.
July 14 - Dec. 31	Open to all species, except king salmon.

- King salmon:
 - 20 inches or longer: 1 per day, 1 in possession.
 - Less than 20 inches: 10 per day, 10 in possession.
- **May 15-July 13:** Fishing is only allowed between 6 a.m. and 11 p.m. each day.
- **June 1-July 13:** Only unbaited, artificial lures or flies are allowed (multiple hooks are allowed during this time).
- **July 14-August 31:** Bait and multiple hooks are allowed.
- **September 1-May 31:** Only one unbaited, single-hook artificial lure or fly is allowed.
- **Upstream of the Alaska railroad Bridge:**
 - General regulations on pages 18-19 apply except:
 - **North fork of the Kashwitna River, and all waters within a ¼ mile radius of its confluence with the Kashwitna River:**
 - Only one unbaited, single-hook, artificial lure or fly is allowed year-round.
 - Rainbow/steelhead trout: Catch-and-release fishing only. All rainbow/steelhead trout caught must be released immediately.

LITTLE WILLOW CREEK DRAINAGE:

- See Caswell Creek special regulations.

...continued

MONTANA CREEK DRAINAGE:

- **Entire drainage including all waters within ½ mile radius of its confluence with the Susitna River:**
 - Rainbow/steelhead trout and Arctic grayling: Catch-and-release fishing only. All rainbow/steelhead trout and Arctic grayling caught must be released immediately.
- **From its mouth upstream to ADF&G markers located ½ mile above the Parks Highway:**

Jan. 1 - June 17	Open to all species, including king salmon.
June 18 - June 21	Open to species other than king salmon.
June 22 - June 24	Open to all species, including king salmon.
June 25 - June 28	Open to species other than king salmon.
June 29 - July 1	Open to all species, including king salmon.
July 2 - July 13	Open to species other than king salmon.
July 14 - Dec. 31	Open to all species, except king salmon.

- King salmon:
 - 20 inches or longer: 1 per day, 1 in possession.
 - Less than 20 inches: 10 per day, 10 in possession.
- **May 15-July 13:** Fishing is only allowed between 6 a.m. and 11 p.m. each day.
- **June 1-July 13:** Only unbaited, artificial lures or flies are allowed (multiple hooks are allowed during this time), but only up to the Parks Highway.
- **July 14-August 31:** Bait and multiple hooks are allowed, but only up to the Parks Highway.
- **September 1-May 31:** Only one, unbaited, single-hook artificial lure or fly is allowed.
- **Upstream of the Parks Highway:**
 - Only one unbaited, single-hook, artificial lure or fly is allowed year-round.
- **Upstream of ADF&G markers located ½ mile above the Parks Highway:**
 - **Closed year-round to all salmon fishing.**
 - Rainbow/steelhead trout and Arctic grayling: Catch-and-release fishing only. All rainbow/steelhead trout and Arctic grayling caught must be released immediately.

RABIDEUX, SUNSHINE, AND TRAPPER CREEKS DRAINAGES:

- **From the mouth to ADF&G markers located ¼ mile upstream (on all drainages):**

Jan. 1 - June 17	Open to all species, including king salmon.
June 18 - June 21	Open to species other than king salmon.
June 22 - June 24	Open to all species, including king salmon.
June 25 - June 28	Open to species other than king salmon.
June 29 - July 1	Open to all species, including king salmon.
July 2 - July 13	Open to species other than king salmon.
July 14 - Dec. 31	Open to all species, except king salmon.

- King salmon:
 - 20 inches or longer: 1 per day, 1 in possession.
 - Less than 20 inches: 10 per day, 10 in possession.
- **May 15-July 13:** Fishing is only allowed between 6 a.m. and 11 p.m. each day.
- **June 1-July 13:** Only unbaited, artificial lures or flies are allowed (multiple hooks are allowed during this time).

Rabideux, Sunshine, and Trapper Creeks Drainages continued...

- **July 14-August 31:** Bait and multiple hooks are allowed.
- **September 1-May 31:** Only one unbaited, single-hook artificial lure or fly is allowed.
- **Upstream from ADF&G markers ¼ mile upstream of the creek's mouth (on all drainages):**
 - Open year-round to sport fishing for all species other than king salmon.
- **Rabideux Creek:**
 - **All waters upstream of the Parks Highway:**
 - Open year-round to sport fishing for all species other than king salmon.
 - Only one unbaited, single-hook, artificial lure or fly is allowed year-round.
- **Sunshine Creek:**
 - **All waters upstream from ADF&G markers ¼ mile upstream from its mouth:**
 - Open year-round to sport fishing for all species other than king salmon.
 - Only one unbaited, single-hook, artificial lure or fly is allowed year-round.
- **Trapper Creek:**
 - **All waters upstream of the Susitna River Road:**
 - Open year-round to sport fishing for all species other than king salmon.
 - Only one unbaited, single-hook, artificial lure or fly is allowed year-round.

SHEEP CREEK DRAINAGE:

- See Caswell Creek special regulations.

SUNSHINE CREEK DRAINAGE:

- See Rabideux Creek special regulations.

SUSITNA RIVER and all flowing waters within a ¼ mile radius of the river, from its confluence with the Deshka River upstream to its confluence with the Talkeetna River:

Jan. 1 - June 17	Open to all species, including king salmon.
June 18 - June 21	Open to species other than king salmon.
June 22 - June 24	Open to all species, including king salmon.
June 25 - June 28	Open to species other than king salmon.
June 29 - July 1	Open to all species, including king salmon.
July 2 - July 13	Open to species other than king salmon.
July 14 - Dec. 31	Open to all species, except king salmon.

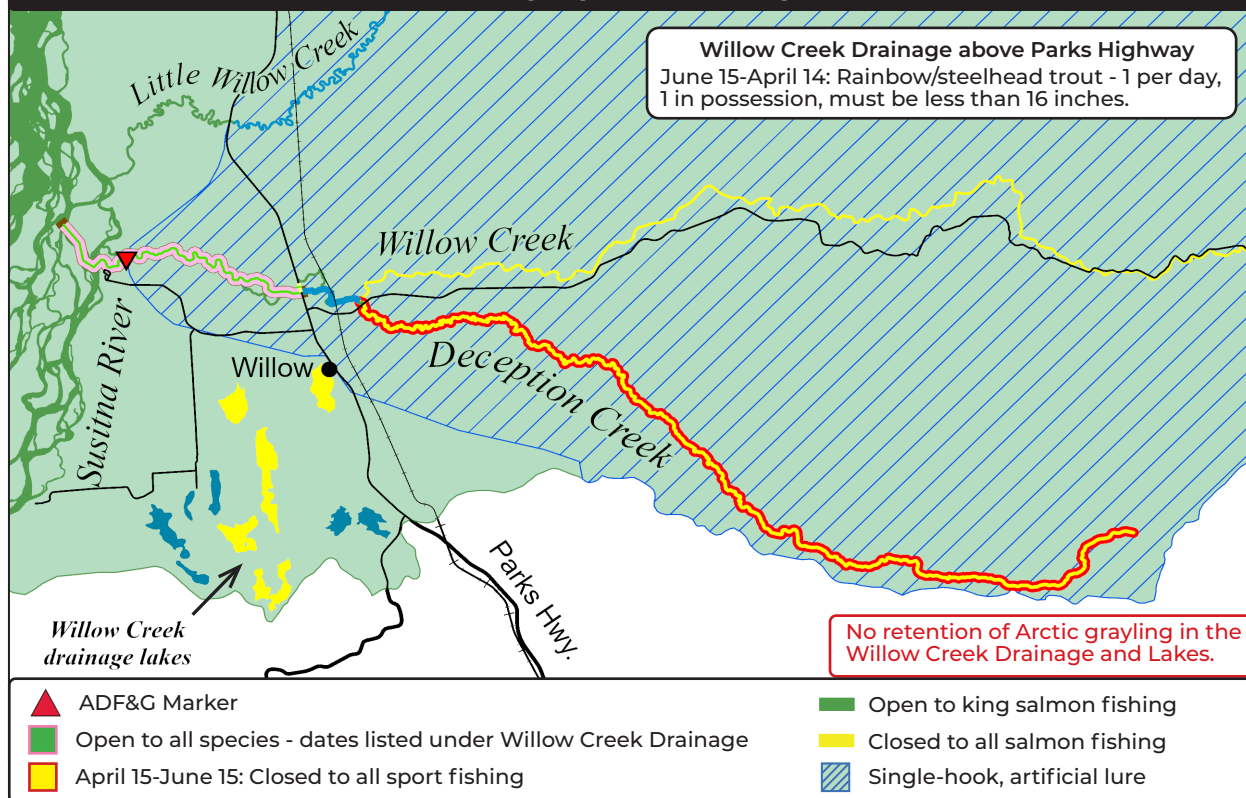
- King salmon:
 - 20 inches or longer: 1 per day, 1 in possession.
 - Less than 20 inches: 10 per day, 10 in possession.
- **May 15-July 13:** Fishing is only allowed between 6 a.m. and 11 p.m. each day.
- **June 1-July 13:** Only unbaited, artificial lures or flies are allowed (multiple hooks are allowed during this time).
- **July 14-August 31:** Bait and multiple hooks are allowed.
- **September 1-May 31:** Only one, unbaited, single-hook artificial lure or fly is allowed.

TRAPPER CREEK DRAINAGE:

- See Rabideux Creek Special Regulations.

...continued

WILLOW CREEK DRAINAGE



WILLOW CREEK DRAINAGE:

• Including all waters within a ½ mile radius of its confluence with the Susitna River.

- Rainbow/steelhead trout: Catch-and-release fishing only. All rainbow/steelhead trout caught must be released immediately.
- Arctic grayling: Catch-and-release fishing only. All Arctic grayling caught must be released immediately.

• From its mouth upstream to the Parks Highway:

Jan. 1 - June 17	Open to all species, including king salmon.
June 18 - June 21	Open to species other than king salmon.
June 22 - June 24	Open to all species, including king salmon.
June 25 - June 28	Open to species other than king salmon.
June 29 - July 1	Open to all species, including king salmon.
July 2 - July 13	Open to species other than king salmon.
July 14 - Dec. 31	Open to all species, except king salmon.

- King salmon:
 - 20 inches or longer: 1 per day, 1 in possession.
 - Less than 20 inches: 10 per day, 10 in possession.

• **May 1-July 13: Fishing from a boat for any species is prohibited in a portion of the Susitna River at the furthest downstream mouth of Willow Creek. The area closed to fishing from a boat is from an ADF&G marker located on the upstream bank, downstream approximately 300 yards to another ADF&G marker.**

• **May 15-July 13:** Fishing is only allowed between 6 a.m. and 11 p.m. each day.

• **June 1-July 13:** Only unbaited, artificial lures or flies are allowed (multiple hooks are allowed during this time), but only up to the ADF&G markers located ½ mile upstream from the mouth of Willow Creek.

Willow Creek Drainage continued...

- **July 14-August 31:** Bait and multiple hooks are allowed, but only up to the ADF&G markers located ½ mile upstream from the mouth of Willow Creek.
- **September 1-May 31:** Only one unbaited, single-hook artificial lure or fly is allowed.
- **Upstream from ADF&G markers located ½ mile upstream from its mouth:**
 - Only one unbaited, single-hook, artificial lure or fly is allowed year-round.
- **Upstream of the Parks Highway to its confluence with Deception Creek:**
 - Open year-round to sport fishing for all species other than king salmon.
 - Only one unbaited, single-hook, artificial lure or fly is allowed year-round.
 - Rainbow/steelhead trout:
 - **April 15-June 14:** Catch-and-release fishing only. All rainbow/steelhead trout caught must be released immediately.
 - **June 15-April 14:** 1 per day, 1 in possession, less than 16 inches long.
- **Upstream of Deception Creek:**
 - Open year-round to sport fishing for all species other than salmon.
 - Only one unbaited, single-hook, artificial lure or fly is allowed year-round.
 - Rainbow/steelhead trout:
 - **April 15-June 14:** Catch-and-release fishing only. All rainbow/steelhead trout caught must be released immediately.
 - **June 15-April 14:** 1 per day, 1 in possession, less than 16 inches long.

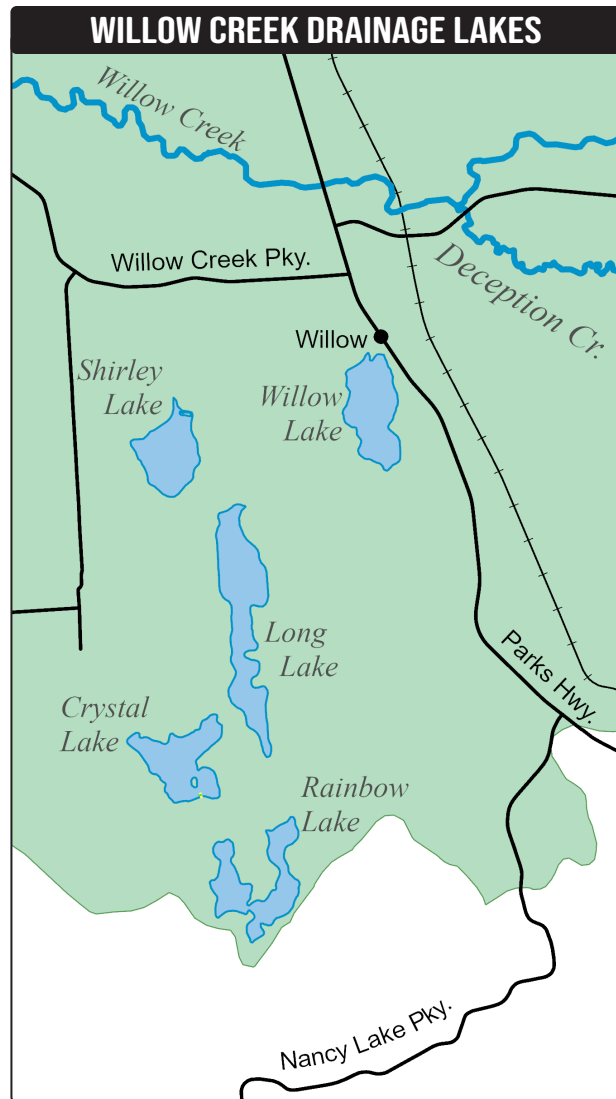
...continued

DECEPTION CREEK DRAINAGE:

- **Closed year-round to salmon fishing.**
- **June 15-April 14:** Open to sport fishing.
- Only one unbaited, single-hook, artificial lure or fly is allowed year-round.

WILLOW CREEK DRAINAGE LAKES - (Crystal, Long, Rainbow, Shirley and Willow):

- **Closed year-round to all salmon fishing.**
- Rainbow/steelhead trout: Open year-round.
- Arctic grayling: Catch-and-release fishing only. All Arctic grayling caught must be released immediately.
- **Crystal Lake:**
 - Rainbow/steelhead trout: 5 per day, 5 in possession, only 1 may be over 20 inches in length.
 - Northern pike: Sport fishing through the ice for northern pike is allowed using 5 lines, provided standard ice fishing gear is used, the fishing gear is closely attended, and all other fish caught are released immediately. You may use two hooks on a single line, provided that both hooks are attached to one single piece of bait.
 - **Live release prohibited.** You are not allowed to release live pike back into the water. Pike not retained for personal use may be disposed of through lawful and safe methods, including returning dead pike to the water.
- **Long Lake:**
 - Rainbow/steelhead trout: 2 per day, 2 in possession, only 1 may be over 20 inches in length.
 - Northern pike: Sport fishing through the ice for northern pike is allowed using 5 lines, provided standard ice fishing gear is used, the fishing gear is closely attended, and all other fish caught are released immediately. You may use two hooks on a single line, provided that both hooks are attached to one single piece of bait.
 - **Live release prohibited.** You are not allowed to release live pike back into the water. Pike not retained for personal use may be disposed of through lawful and safe methods, including returning dead pike to the water.
- **Rainbow Lake:**
 - Rainbow/steelhead trout: 2 per day, 2 in possession, only 1 may be over 20 inches in length.
- **Shirley Lake:**
 - Rainbow/steelhead trout: 2 per day, 2 in possession, only 1 may be over 20 inches in length.
 - Northern pike: Sport fishing through the ice for northern pike is allowed using 5 lines, provided standard ice fishing gear is used, the fishing gear is closely attended, and all other fish caught are released immediately. You may use two hooks on a single line, provided that both hooks are attached to one single piece of bait.
 - **Live release of northern pike is prohibited.** See further information under Crystal or Long Lake.
- **Willow Lake:**
 - Rainbow/steelhead trout: 5 per day, 5 in possession, only 1 may be over 20 inches in length.



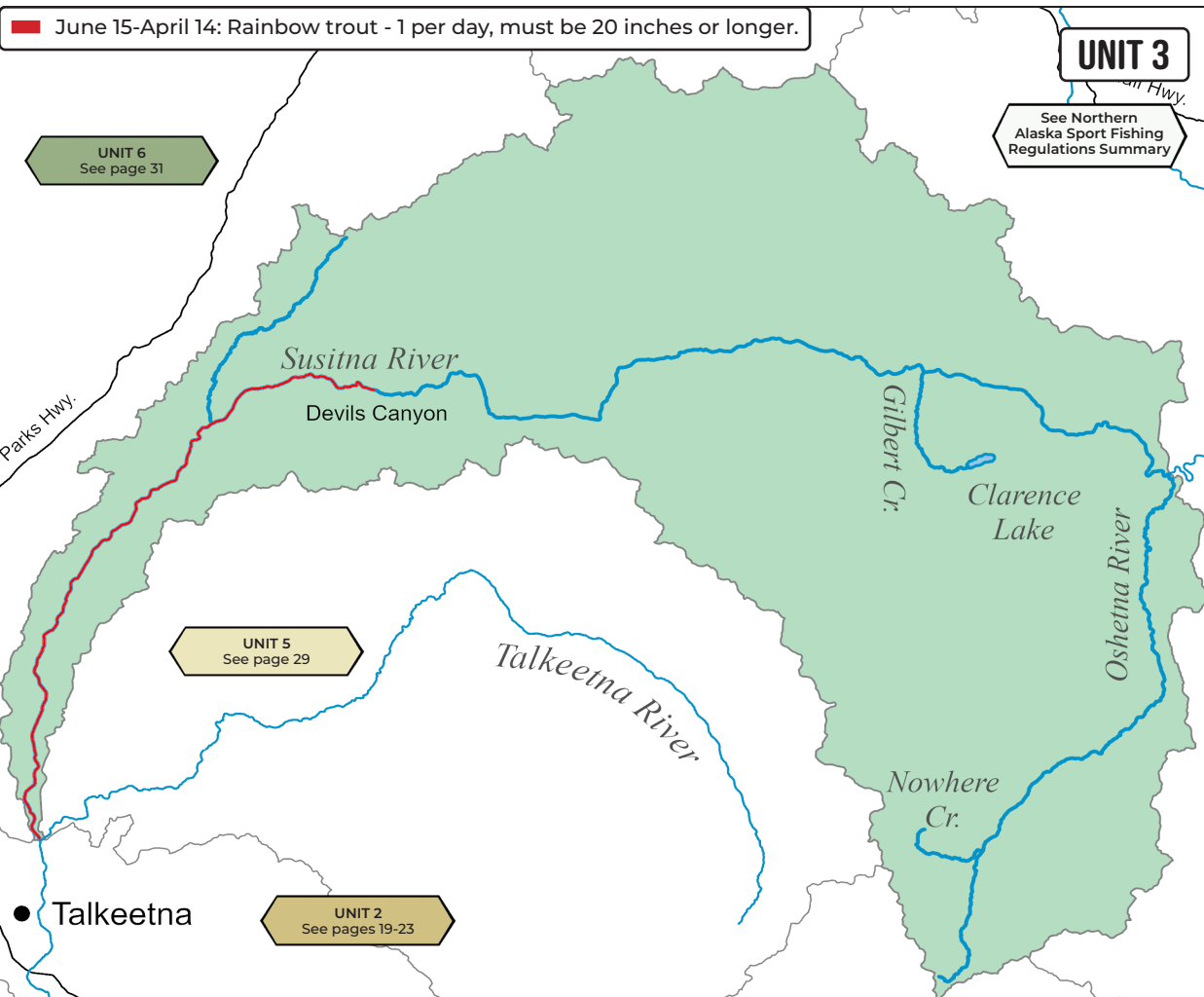
X LAKE (near Talkeetna):

- **May 1-October 31:** Open to sport fishing.
- **November 1-April 30: Closed to all sport fishing.**
- Only one unbaited, single-hook, artificial lure or fly is allowed year-round.
- Rainbow trout/steelhead: Catch-and-release fishing only. All rainbow trout/steelhead trout caught must be released immediately.

...continued



Fishing buddies.



GENERAL REGULATIONS - UNIT 3

Inclusive waters: Susitna River drainages from its confluence with the Talkeetna River upstream to its confluence with the Oshetna River (including the Oshetna River drainage, but excluding the Chulitna River drainage).

Fishing is open year-round for all species unless otherwise noted below or in special regulations.

Check for emergency orders online at www.adfg.alaska.gov/sf/EONR prior to fishing.

KING SALMON

- Please check emergency orders for king salmon closures or contact the local ADF&G office for more info.
- Upstream from its confluence with the Talkeetna, to and including Devils Canyon:
 - Season: **January 1-July 13.**
 - **May 15-July 13: Fishing is only allowed between 6 a.m. and 11 p.m. each day.**
 - 20 inches or longer: 1 per day, 2 in possession.
 - A king salmon 20 inches or longer that is removed from the water must be retained and becomes part of the bag limit of the person who originally hooked the fish. You must not remove a king salmon 20 inches or longer from the water before releasing it.

KING SALMON continued...

- There is a combined annual limit of 5 king salmon 20 inches or longer from the waters of the following areas: Cook Inlet Salt Waters, West Cook Inlet, Susitna River Drainage, Knik Arm, Anchorage Bowl, Kenai River, and Kenai Peninsula.
- If you retain a king salmon 20 inches or longer, you must immediately record that harvest. See page 5 for recording instructions.
- Less than 20 inches: 10 per day, 10 in possession.
- **Upstream of Devils Canyon:**
 - **Closed to king salmon fishing.**



SOCKEYE, COHO, AND CHUM SALMON

- **In stocked lakes:** 10 per day, 10 in possession, in combination with king salmon. See pages 86-87.
- **In other lakes, ponds, and in all flowing waters:**
 - 16 inches or longer: 3 per day, 3 in possession, only 2 per day, 2 in possession may be coho salmon.
 - A coho (silver) salmon 16 inches or longer that is removed from the water must be retained and becomes part of the bag limit of the person who originally hooked the fish. You must not remove a coho salmon 16 inches or longer from the water before releasing it.
 - Less than 16 inches: 10 per day, 10 in possession, in combination.

...continued

NEW PINK SALMON

- 6 per day, 6 in possession.

ARCTIC CHAR/DOLLY VARDEN

- 5 per day, 5 in possession, only 1 of which may be 12 inches or longer.

RAINBOW/STEELHEAD TROUT

- **In lakes and ponds:** 2 per day, 2 in possession, only 1 of which may be 20 inches or longer.
- **In flowing waters upstream from its confluence with the Talkeetna River to and including Devils Canyon:**
 - **April 15-June 14:** Catch-and-release fishing only. All rainbow/steelhead trout caught must be released immediately.
 - **June 15-April 14:** 1 per day, must be 20 inches or longer.
- **In flowing waters upstream of Devils Canyon:**
 - **April 15-June 14:** Catch-and-release fishing only. All rainbow/steelhead trout caught must be released immediately.
 - **June 15-April 14:** 2 per day, 2 in possession, only 1 of which may be 20 inches or longer.
- 20 inches or longer:
 - There is a total annual limit of 2 rainbow/steelhead trout 20 inches or longer taken north of the latitude of Point Adam, from the waters of the following areas: West Cook Inlet, Susitna River Drainage, Knik Arm, Anchorage Bowl, Kenai Lake drainages, Kenai River tributaries, and Kenai Peninsula.
 - If you retain a rainbow/steelhead trout 20 inches or longer, you must immediately record that harvest. See page 5 for recording instructions

ARCTIC GRAYLING

- **Upstream from its confluence with the Talkeetna River, to and including Devils Canyon:** 2 per day, 2 in possession.
- **Upstream of Devils Canyon:** 2 per day, 2 in possession.

BURBOT

- 5 per day, 5 in possession.
- Bait is allowed while fishing for burbot, and burbot may be taken with more than one line and hook only if:
 - The total number of aggregate hooks/lines does not exceed the daily bag limit for burbot in the water being fished;
 - The hooks are single hooks with a gap between point and shank larger than $\frac{3}{4}$ inch;
 - Each hook is set to rest on the bottom of the lake or stream; and
 - The burbot fishing gear is closely attended by the angler, except in flowing waters of the Susitna and Yentna river drainages, where lines must be tended at least once each 24 hours.
- Each line is identified with angler's name and address.
- When fishing for burbot, you must immediately release all other fish caught incidentally.

LAKE TROUT

- 2 per day, 2 in possession.

OTHER FINFISH

- No limit.

NORTHERN PIKE

- No limit.
- **Live Release Prohibited.** You are not allowed to release live pike back into the water. Pike not retained for personal use may be disposed of through lawful and safe methods, including returning dead pike to the water.
- Northern pike may be taken by spear, sport fishing gear, ice fishing gear, or by bow and arrow (the arrow must be attached to the bow with a line and the arrow must have a barbed tip).
- When fishing through the ice for northern pike, you may use two hooks on a single line, provided that both hooks are attached to one single piece of bait.

METHODS AND MEANS - UNIT 3

TACKLE RESTRICTIONS:

- **In all flowing waters of Unit 3:** Only one unbaited, single-hook, artificial lure or fly is allowed year-round.

SPECIAL REGULATIONS - UNIT 3

CLARENCE LAKE:

- Rainbow/steelhead trout:
 - 2 per day, 2 in possession, only 1 of which may be 20 inches or longer.
- Arctic grayling:
 - 2 per day, 2 in possession.

SUSITNA RIVER:

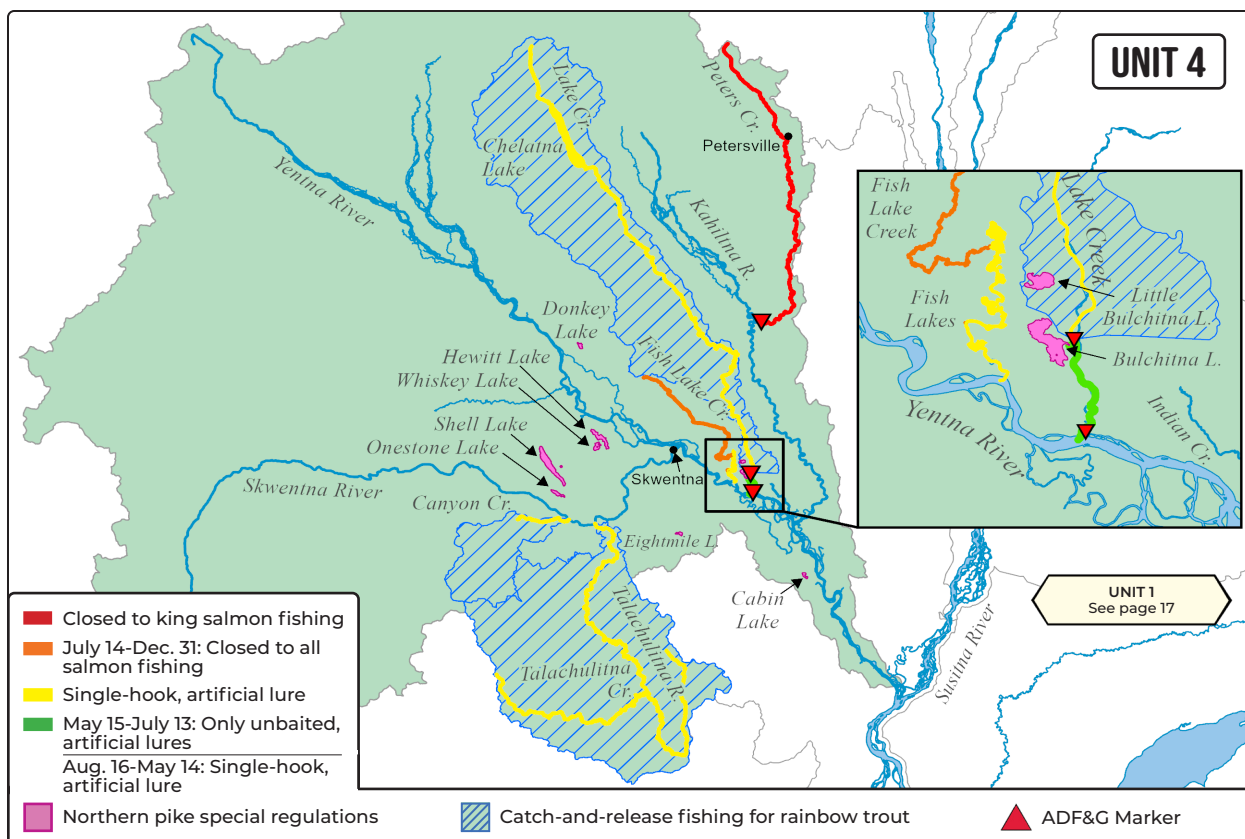
- **Upstream from its confluence with the Talkeetna River, to and including Devils Canyon:**
 - **May 15-July 13: Fishing is only allowed between 6 a.m. and 11 p.m. each day.**
- **Upstream of its confluence with the Talkeetna River to Devils Canyon (excluding the Chulitna River drainage) - trophy rainbow trout waters in Unit 3:**
 - Rainbow/steelhead trout:
 - 20 inches or longer: 1 per day, 1 in possession. Annual limit of 2. If you retain a rainbow/steelhead trout 20 inches or longer, you must immediately record that harvest. See page 5 for recording instructions.
 - Less than 20 inches: No retention.

...continued



Successful day of fishing for these young anglers.

UNIT 4



UNIT 1
See page 17

GENERAL REGULATIONS - UNIT 4

Inclusive waters: Flowing waters, lakes, and ponds of the Yentna River drainage.

Fishing is open year-round for all species unless otherwise noted below or in special regulations.

Check for emergency orders online at www.adfg.alaska.gov/sf/EONR prior to fishing.

KING SALMON

- **Please check emergency orders for king salmon closures or contact the local ADF&G office for more info.**
- **Season: January 1-July 13.**
 - **May 15-July 13: In waters open to king salmon fishing is only allowed between 6 a.m. and 11 p.m. each day.**
- 20 inches or longer: 1 per day, 2 in possession.
 - A king salmon 20 inches or longer that is removed from the water must be retained and becomes part of the bag limit of the person who originally hooked the fish. You may not remove a king salmon 20 inches or longer from the water before releasing it.
- There is a combined annual limit of 5 king salmon 20 inches or longer from the waters of the following areas: Cook Inlet Salt Waters, West Cook Inlet, Susitna River Drainage, Knik Arm, Anchorage Bowl, Kenai River, and Kenai Peninsula.
- If you retain a king salmon 20 inches or longer, you must immediately record that harvest. See page 5 for recording instructions.
- Less than 20 inches: 10 per day, 10 in possession.

SOCKEYE, COHO, AND CHUM SALMON

- 16 inches or longer: 3 per day, 6 in possession, **in combination**.
- A coho (silver) salmon 16 inches or longer that is removed from the water must be retained and becomes part of the bag limit of the person who originally hooked the fish. You must not remove a coho salmon 16 inches or longer from the water before releasing it.
- Less than 16 inches: 10 per day, 10 in possession.

PINK SALMON

- **6 per day, 6 in possession.**

RAINBOW/STEELHEAD TROUT

- **In lakes and ponds:** 2 per day, 2 in possession, only 1 of which may be 20 inches or longer.
- **In flowing waters:**
 - **April 15-June 14:** Catch-and-release fishing only. All rainbow trout/steelhead trout caught must be released immediately.
 - **June 15-April 14:** 2 per day, 2 in possession, only 1 of which may be 20 inches or longer.
- 20 inches or longer:
 - There is a total annual limit of 2 rainbow/steelhead trout 20 inches or longer taken north of the latitude of Point Adam, from the waters of the following areas: West Cook Inlet, Susitna River Drainage, Knik Arm, Anchorage Bowl, Kenai Lake drainages, Kenai River tributaries, and Kenai Peninsula.
 - If you retain a rainbow/steelhead trout 20 inches or longer, you must immediately record that harvest. See page 5 for recording instructions.

LAKE TROUT

- 2 per day, 2 in possession.

...continued

ARCTIC GRAYLING

- 2 per day, 2 in possession.

ARCTIC CHAR/DOLLY VARDEN

- 5 per day, 5 in possession, only 1 of which may be 12 inches or longer.

NORTHERN PIKE

- No limit.
- **Live Release Prohibited.** You are not allowed to release live pike back into the water. Pike not retained for personal use may be disposed of through lawful and safe methods, including returning dead pike to the water.
- Northern pike may be taken by spear, sport fishing gear, ice fishing gear, or by bow and arrow (the arrow must be attached to the bow with a line and the arrow must have a barbed tip).
- When fishing through the ice for northern pike, you may use two hooks on a single line, provided that both hooks are attached to one single piece of bait.

The following special rules apply to ice fishing for northern pike in the waters listed below:

- Sport fishing through the ice for northern pike is allowed using 5 lines provided that:
 - Standard ice fishing gear is used;
 - The fishing gear is closely attended, and;
 - All other species of fish caught are released immediately.

Bulchitna Lake

- Cabin Lakes
- Donkey Lake
- Eightmile Lake
- Fish Lakes
- Hewitt Lake
- Indian Creek
- Little Bulchitna Lake
- Onestone Lake
- Shell Lake
- Whiskey Lake

BURBOT

- 5 per day, 5 in possession, no size limit.
- Bait is allowed while fishing for burbot, and burbot may be taken with more than one line and hook only if:
 - The total number of aggregate hooks/lines does not exceed the daily bag limit for burbot in the water being fished;
 - The hooks are single hooks with a gap between point and shank larger than $\frac{3}{4}$ inch;
 - Each hook is set to rest on the bottom of the lake or stream; and
 - The burbot fishing gear is closely attended by the angler, except in flowing waters of the Susitna and Yentna river drainages, where lines must be tended at least once each 24 hours.
- Each line is identified with angler's name and address.
- When fishing for burbot, you must immediately release all other fish caught incidentally.

OTHER FINFISH

- No limit.

METHODS AND MEANS - UNIT 4

TACKLE RESTRICTIONS:

- **July 14-August 31:** Bait and multiple hooks are allowed.
- **September 1-July 13:**
 - In all flowing waters of Unit 4: Only unbaited, artificial lures or flies are allowed.

SPECIAL REGULATIONS - UNIT 4

CANYON CREEK:

- Only one unbaited, single-hook, artificial lure or fly is allowed year-round.
- Rainbow/steelhead trout: Catch-and-release fishing only. All rainbow/steelhead trout caught must be released immediately.

FISH LAKE CREEK DRAINAGE:

- After you retain a king salmon 20 inches or longer, you may not fish for king salmon anywhere else on that same day.
- Upstream from the inlet of the first lake:
 - January 1-July 13: Open to salmon fishing.

LAKE CREEK DRAINAGE:

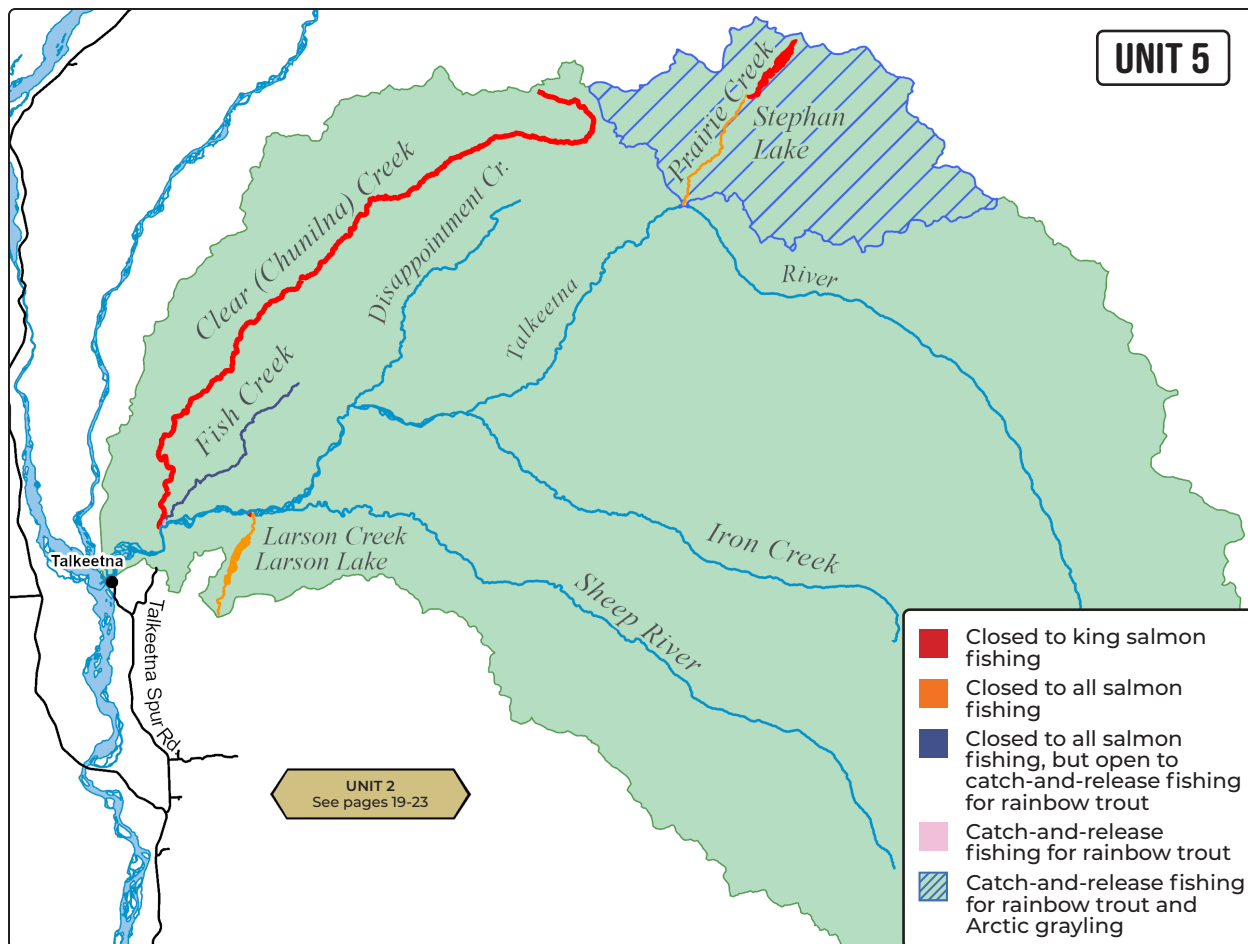
- **May 15-July 13:** Fishing is only allowed between 6 a.m. and 11 p.m. each day.
- After you retain a king salmon 20 inches or longer, you may not fish for king salmon anywhere else on that same day.
- From ADF&G markers 100 yards upstream of its mouth to ADF&G markers $\frac{1}{4}$ mile upstream of the creek that drains Bulchitna Lake:
 - **May 15-July 13:** Only unbaited, artificial lures or flies are allowed.
 - **July 14-August 15:** Bait and multiple hooks are allowed.
 - **August 16-May 14:** Only one unbaited, single-hook, artificial lure or fly is allowed.
- Rainbow/steelhead trout:
 - **June 15-August 15:** 2 per day, 2 in possession, only 1 of which may be 20 inches or longer.
 - **August 16-June 14:** Catch-and-release fishing only. All rainbow/steelhead trout caught must be released immediately.
- Upstream from ADF&G markers $\frac{1}{4}$ mile upstream of the creek that drains Bulchitna Lake (including Chelatna Lake):
 - Only one unbaited, single-hook, artificial lure or fly is allowed year-round.
 - Rainbow/steelhead trout: Catch-and-release fishing only. All rainbow/steelhead trout caught must be released immediately.

PETERS CREEK:

- All waters upstream of ADF&G markers located 1 mile upstream of its confluence with the Kahiltna:
 - Open year-round to sport fishing for all species other than king salmon.

TALACHULITNA RIVER DRAINAGE - including all waters within a $\frac{3}{4}$ mile radius of its confluence with the Skwentna River:

- **May 15-July 13:** Fishing is only allowed between 6 a.m. and 11 p.m. each day.
- Only one unbaited, single-hook, artificial lure or fly is allowed year-round.
- After you retain a king salmon 20 inches or longer, you must stop fishing for king salmon within a one-mile radius of the mouth of the Talachulitna for the remainder of the day.
- Rainbow/steelhead trout: Catch-and-release fishing only. All rainbow/steelhead trout caught must be released immediately.



GENERAL REGULATIONS - UNIT 5

Inclusive waters: Flowing waters, lakes, and ponds of the Talkeetna River drainage.

Fishing is open year-round for all species unless otherwise noted below or in special regulations.

Check for emergency orders online at www.adfg.alaska.gov/sf/EONR prior to fishing.

KING SALMON

- **Please check emergency orders for king salmon closures or contact the local ADF&G office for more info.**
- **Season: January 1-July 13.**
 - **May 15-July 13: In waters open to king salmon fishing, fishing is only allowed between 6 a.m. and 11 p.m. each day.**
- 20 inches or longer: 1 per day, 2 in possession.
 - A king salmon 20 inches or longer that is removed from the water must be retained and becomes part of the bag limit of the person who originally hooked the fish. You must not remove a king salmon 20 inches or longer from the water before releasing it.
- There is a combined annual limit of 5 king salmon 20 inches or longer from the waters of the following areas: Cook Inlet Salt Waters, West Cook Inlet, Susitna River Drainage, Knik Arm, Anchorage Bowl, Kenai River, and Kenai Peninsula.

KING SALMON continued...

- If you retain a king salmon 20 inches or longer, you must immediately record that harvest. See page 5 for recording instructions.
- Less than 20 inches: 10 per day, 10 in possession.

SOCKEYE, COHO, AND CHUM SALMON

- **In stocked lakes:** 10 per day, 10 in possession, in combination with king salmon. See pages 86-87.
- **In other lakes, ponds, and in all flowing waters:**
 - 16 inches or longer: 3 per day, 3 in possession, only 2 per day, 2 in possession may be coho salmon.
 - A coho (silver) salmon 16 inches or longer that is removed from the water must be retained and becomes part of the bag limit of the person who originally hooked the fish. You must not remove a coho salmon 16 inches or longer from the water before releasing it.
 - Less than 16 inches: 10 per day, 10 in possession, in combination.

PINK SALMON

- **6 per day, 6 in possession.**

ARCTIC CHAR/DOLLY VARDEN

- 5 per day, 5 in possession, only 1 of which may be 12 inches or longer.

ARCTIC GRAYLING

- 2 per day, 2 in possession.

LAKE TROUT

- 2 per day, 2 in possession.

OTHER FINFISH

- No limit.

...continued

BURBOT

- 5 per day, 5 in possession, no size limit.
- Bait is allowed while fishing for burbot, and burbot may be taken with more than one line and hook only if:
 - The total number of aggregate hooks/lines does not exceed the daily bag limit for burbot in the water being fished;
 - The hooks are single hooks with a gap between point and shank larger than $\frac{3}{4}$ inch;
 - Each hook is set to rest on the bottom of the lake or stream; and
 - The burbot fishing gear is closely attended by the angler, except in flowing waters of the Susitna and Yentna river drainages, where lines must be tended at least once each 24 hours.
- Each line is identified with angler's name and address.
- When fishing for burbot, you must immediately release all other fish caught incidentally.

RAINBOW/STEELHEAD TROUT

- **In lakes and ponds:** 2 per day, 2 in possession, only 1 of which may be 20 inches or longer.
- **In flowing waters:**
 - **April 15-June 14:** Catch-and-release fishing only. All rainbow/steelhead trout caught must be released immediately.
 - **June 15-April 14:** 2 per day, 2 in possession, only 1 of which may be 20 inches or longer.
- 20 inches or longer:
 - There is a total annual limit of 2 rainbow/steelhead trout 20 inches or longer taken north of the latitude of Point Adam, from the waters of the following areas: West Cook Inlet, Susitna River Drainage, Knik Arm, Anchorage Bowl, Kenai Lake drainages, Kenai River tributaries, and Kenai Peninsula.
 - If you retain a rainbow/steelhead trout 20 inches or longer, you must immediately record that harvest. See page 5 for recording instructions.

NORTHERN PIKE

- No limit.
- **Live Release Prohibited.** You are not allowed to release live pike back into the water. Pike not retained for personal use may be disposed of through lawful and safe methods, including returning dead pike to the water.
- Northern pike may be taken by spear, sport fishing gear, ice fishing gear, or by bow and arrow (the arrow must be attached to the bow with a line and the arrow must have a barbed tip).
- When fishing through the ice for northern pike, you may use two hooks on a single line, provided that both hooks are attached to one single piece of bait.

METHODS AND MEANS - UNIT 5

TACKLE RESTRICTIONS:

- **July 14-August 31:** Bait and multiple hooks are allowed.
- **September 1-July 13:**
 - **In all flowing waters of Unit 5:** Only unbaited, artificial lures or flies are allowed.

SPECIAL REGULATIONS - UNIT 5

CLEAR (CHUNILNA) CREEK DRAINAGE:

- **After retaining a king salmon 20 inches or longer, you may not fish anywhere for king salmon on that same day.**
- **Upstream of ADF&G markers 2 miles upstream from its mouth:**
 - Open year-round to sport fishing for all species other than king salmon.

FISH CREEK DRAINAGE:

- Only one unbaited, single-hook, artificial lure or fly is allowed.
- Rainbow/steelhead trout: Catch-and-release fishing only. All rainbow/steelhead trout caught must be released immediately.
- **Upstream of an ADF&G marker $\frac{1}{4}$ mile upstream of its confluence with the Talkeetna River:**
 - Open year-round to sport fishing for all species other than salmon.

LARSON CREEK DRAINAGE:

- **Including all waters within a $\frac{1}{4}$ -mile radius of its confluence with the Talkeetna River:**
 - **July 1-August 15:** Only open to sport fishing between 6 a.m. and 11 p.m. each day.
 - Open year-round to sport fishing for all species other than king salmon.
- **Upstream of an ADF&G marker $\frac{1}{4}$ mile upstream of its confluence with the Talkeetna River:**
 - Open year-round to sport fishing for species other than salmon.

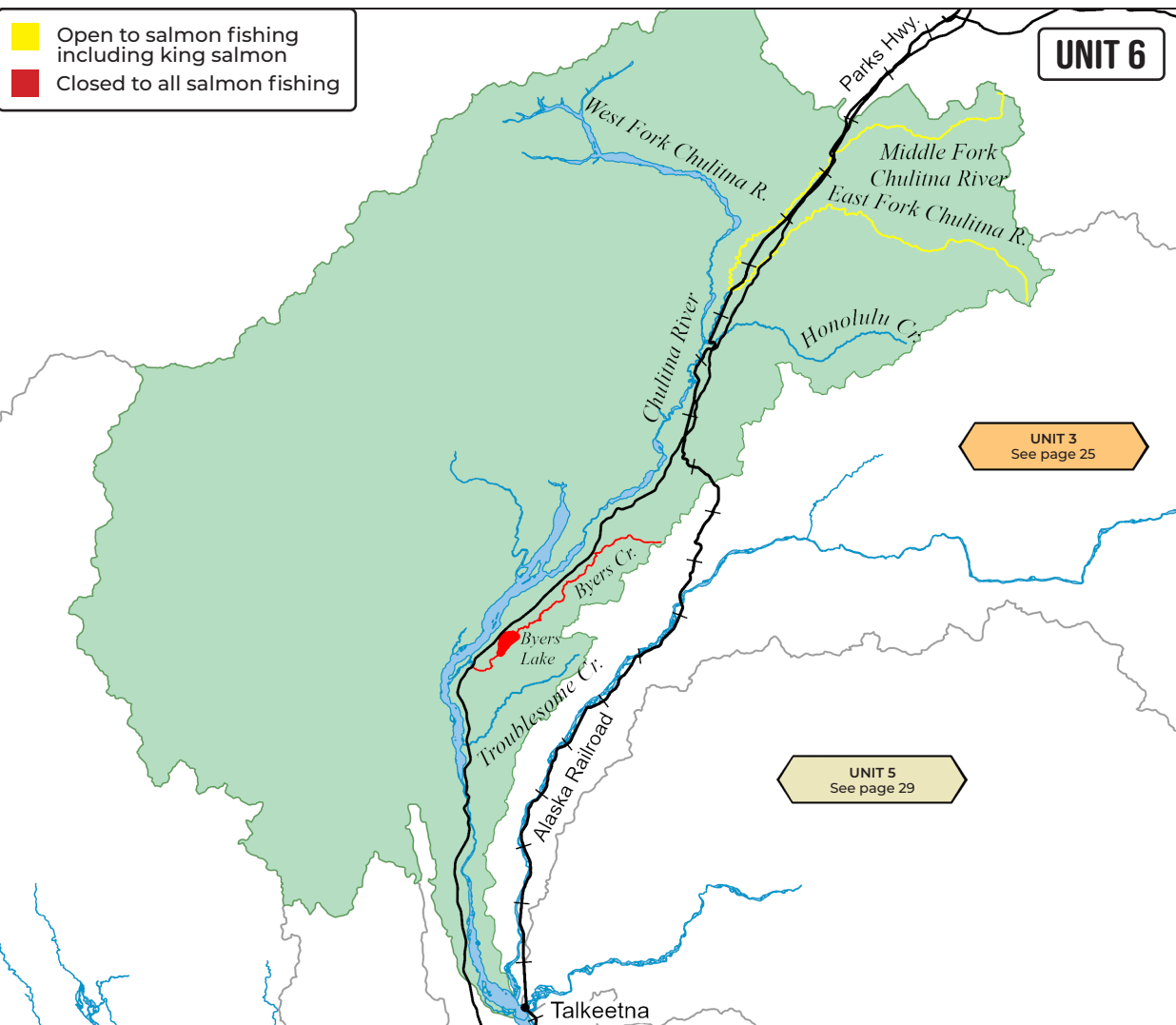
PRAIRIE CREEK DRAINAGE - including all waters within a $\frac{1}{4}$ -mile radius of its confluence with the Talkeetna River:

- Open year-round to sport fishing for all species other than king salmon.
- Only one unbaited, single-hook, artificial lure or fly is allowed.
- Rainbow/steelhead trout and Arctic grayling:
 - Catch-and-release fishing only. All rainbow/steelhead trout and Arctic grayling caught must be released immediately.

...continued



Lake trout caught while kayak fishing.



GENERAL REGULATIONS - UNIT 6

Inclusive waters: Flowing waters, lakes, and ponds of the Chulitna River drainage.

Fishing is open year-round for all species unless otherwise noted below or in special regulations.

Check for emergency orders online at www.adfg.alaska.gov/st/EONR prior to fishing.

KING SALMON

- **Please check emergency orders for king salmon closures or contact the local ADF&G office for more info.**
- **Generally, Unit 6 is closed to king salmon fishing, but see the special regulations for the Chulitna River.**
- A king salmon 20 inches or longer that is removed from the water must be retained and becomes part of the bag limit of the person who originally hooked the fish. You must not remove a king salmon 20 inches or longer from the water before releasing it.
- If you retain a king salmon 20 inches or longer, you must immediately record that harvest. See page 5 for recording instructions.
- There is a combined annual limit of 5 king salmon 20 inches or longer from the waters

KING SALMON continued...

of the following areas: Cook Inlet Salt Waters, West Cook Inlet, Susitna River Drainage, Knik Arm, Anchorage Bowl, Kenai River, and Kenai Peninsula.

- After retaining a king salmon 20 inches or longer, you may not fish for any species of fish in any water open to king salmon fishing during that same day.

NEW SOCKEYE, COHO, AND CHUM SALMON

- **In stocked lakes:** 10 per day, 10 in possession, in combination with king salmon. See pages 86-87.
- **In other lakes, ponds, and in all flowing waters:**
 - 16 inches or longer: 3 per day, 3 in possession, only 2 per day, 2 in possession may be coho salmon.
 - A coho (silver) salmon 16 inches or longer that is removed from the water must be retained and becomes part of the bag limit of the person who originally hooked the fish. You must not remove a coho salmon 16 inches or longer from the water before releasing it.
 - Less than 16 inches: 10 per day, 10 in possession, in combination.

NEW PINK SALMON

- **6 per day, 6 in possession.**

ARCTIC GRAYLING

- **2 per day, 2 in possession.**

...continued

NORTHERN PIKE

- No limit.
- **Live Release Prohibited.** You are not allowed to release live pike back into the water. Pike not retained for personal use may be disposed of through lawful and safe methods, including returning dead pike to the water.
- Northern pike may be taken by spear, sport fishing gear, ice fishing gear, or by bow and arrow (the arrow must be attached to the bow with a line and the arrow must have a barbed tip).
- When fishing through the ice for northern pike, you may use two hooks on a single line, provided that both hooks are attached to one single piece of bait.

RAINBOW/STEELHEAD TROUT

- **In lakes and ponds:**
 - 2 per day, 2 in possession, only 1 of which may be 20 inches or longer.
- **In flowing waters:**
 - **April 15-June 14:** Catch-and-release fishing only. All rainbow/steelhead trout caught must be released immediately.
 - **June 15-April 14:** 2 per day, 2 in possession, only 1 of which may be 20 inches or longer.
- 20 inches or longer: There is a total annual limit of 2 rainbow/steelhead trout 20 inches or longer taken north of the latitude of Point Adam, from the waters of the following areas: West Cook Inlet, Susitna River Drainage, Knik Arm, Anchorage Bowl, Kenai Lake drainages, Kenai River tributaries, and Kenai Peninsula, except in the stocked lakes of the Knik Arm and Susitna River areas, where the annual limit is 10 rainbow/steelhead trout 20 inches or longer (see pages 86-87 for a list of stocked lakes).
 - If you retain a rainbow/steelhead trout 20 inches or longer, you must immediately record that harvest. See page 5.

BURBOT

- 5 per day, 5 in possession, no size limit.
- Bait is allowed while fishing for burbot, and burbot may be taken with more than one line and hook only if:
 - The total number of aggregate hooks/lines does not exceed the daily bag limit for burbot in the water being fished;
 - The hooks are single hooks with a gap between point and shank larger than $\frac{3}{4}$ inch;
 - Each hook is set to rest on the bottom of the lake or stream; and
 - The burbot fishing gear is closely attended by the angler, except in flowing waters of the Susitna and Yentna river drainages, where lines must be tended at least once each 24 hours.
- Each line is identified with angler's name and address.
- When fishing for burbot, you must immediately release all other fish caught incidentally.

ARCTIC CHAR/DOLLY VARDEN

- 5 per day, 5 in possession, only 1 of which may be 12 inches or longer.

ARCTIC GRAYLING

- 2 per day, 2 in possession.

LAKE TROUT

- 2 per day, 2 in possession.

OTHER FINFISH

- No limit.

METHODS AND MEANS - UNIT 6**Tackle Restrictions:**

- **July 14-August 31:** Bait and multiple hooks are allowed.
- **September 1-July 13:**
 - In all flowing waters of Unit 6: Only unbaited, artificial lures or flies are allowed.

SPECIAL REGULATIONS - UNIT 6**BYERS CREEK DRAINAGE - including Byers Lake:**

- **Byers Creek from its mouth upstream to the Parks Highway:**
 - Open year-round to sport fishing for all species other than king salmon.
 - See bait and hook regulations under "Methods and Means" on pages 6-7.
- **Byers Creek from the Parks Highway upstream, including Byers Lake:**
 - Open year-round to sport fishing for all species other than salmon.
 - Bait and multiple hooks are allowed year-round in Byers Lake (except in flowing waters).

EAST FORK CHULITNA RIVER DRAINAGES - The East Fork of the Chulitna River and its drainages, including all waters within a $\frac{1}{4}$ mile radius of the confluence of the East Fork and West Fork of the Chulitna River, and including the Middle Fork of the Chulitna and the first $\frac{1}{4}$ mile of Honolulu Creek:

- **January 1-July 13:**
 - Only one unbaited, single-hook, artificial lure or fly may be used.
 - Open to sport fishing for all species, including king salmon.
 - King salmon:
 - 20 inches or longer: 1 per day, 1 in possession.
 - Less than 20 inches: 10 per day, 10 in possession.
- **July 14-December 31:**
 - Open to sport fishing for all species other than king salmon.

Jan. 1 - July 13	Open to all species, including king salmon.
Jan. 1 - June 17	King salmon may be retained.
June 18 - June 21	No retention of king salmon.
June 22 - June 24	King salmon may be retained.
June 25 - June 28	No retention of king salmon.
June 29 - July 1	King salmon may be retained.
July 2 - July 5	No retention of king salmon.
July 6 - July 8	King salmon may be retained.
July 9 - July 13	No retention of king salmon.
July 14 - Dec. 31	Open to all species, except king salmon.



Burbot.