

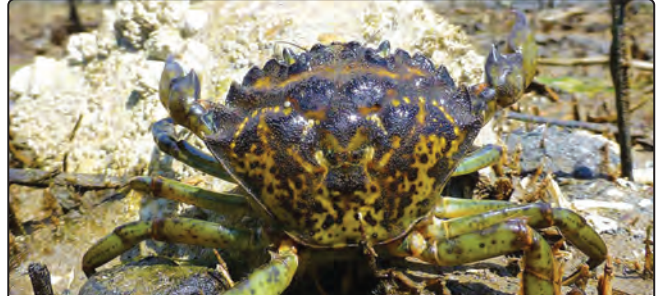


PROTECT ALASKA WATERS HELP STOP THE SPREAD OF INVASIVE SPECIES!



CLEAN. DRAIN. DRY. EVERYWHERE. EVERY TIME.

Inspect your boat and gear, clean all visible mud, plants, and animals from your boat and gear before you leave. Drain all water from your boat. Dry your boat and gear as completely as possible. Dispose of any debris in the trash.



European green crab are established in Southeast Alaska, the extent of their distribution is currently unknown.



Elodea is currently found in Northern and Southcentral Alaska.



These small mussels are no larger than 2 inches long.

Photo courtesy of USGS

Zebra (left) and quagga (right) mussels have not been found in Alaska. However, they could accidentally be transported on boats coming from infested waters.



Signal crayfish are currently in the Buskin Watershed on Kodiak Island.



AQUATIC INVASIVE SPECIES DAMAGE FISHERIES, HABITAT, AND FISHING OPPORTUNITIES IN ALASKA.

Scan the QR code or call the invasive species hotlines at 1 (877) INVASIV to report sightings of any invasive, nonnative, or unusual animals or plants. To learn more about these and other aquatic invasive species and how to prevent the spread of them, visit the invasive species webpage at <https://www.adfg.alaska.gov/index.cfm?adfg=invasive.main>.

ALASKA DEPARTMENT OF FISH & GAME SOUTHWEST ALASKA SPORT FISH OFFICES



Dillingham
(907) 842-2427
Inseason Fishing Hotline
(907) 842-7347

Dillingham

BRISTOL BAY

King Salmon

Kodiak

KODIAK ISLAND

Kodiak
(907) 486-1880

KODIAK ISLAND, ALASKA PENINSULA, AND ALEUTIAN ISLANDS SALT WATER

Dutch Harbor