
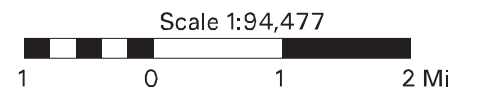


# MESA50 PALMER HAY FLATS

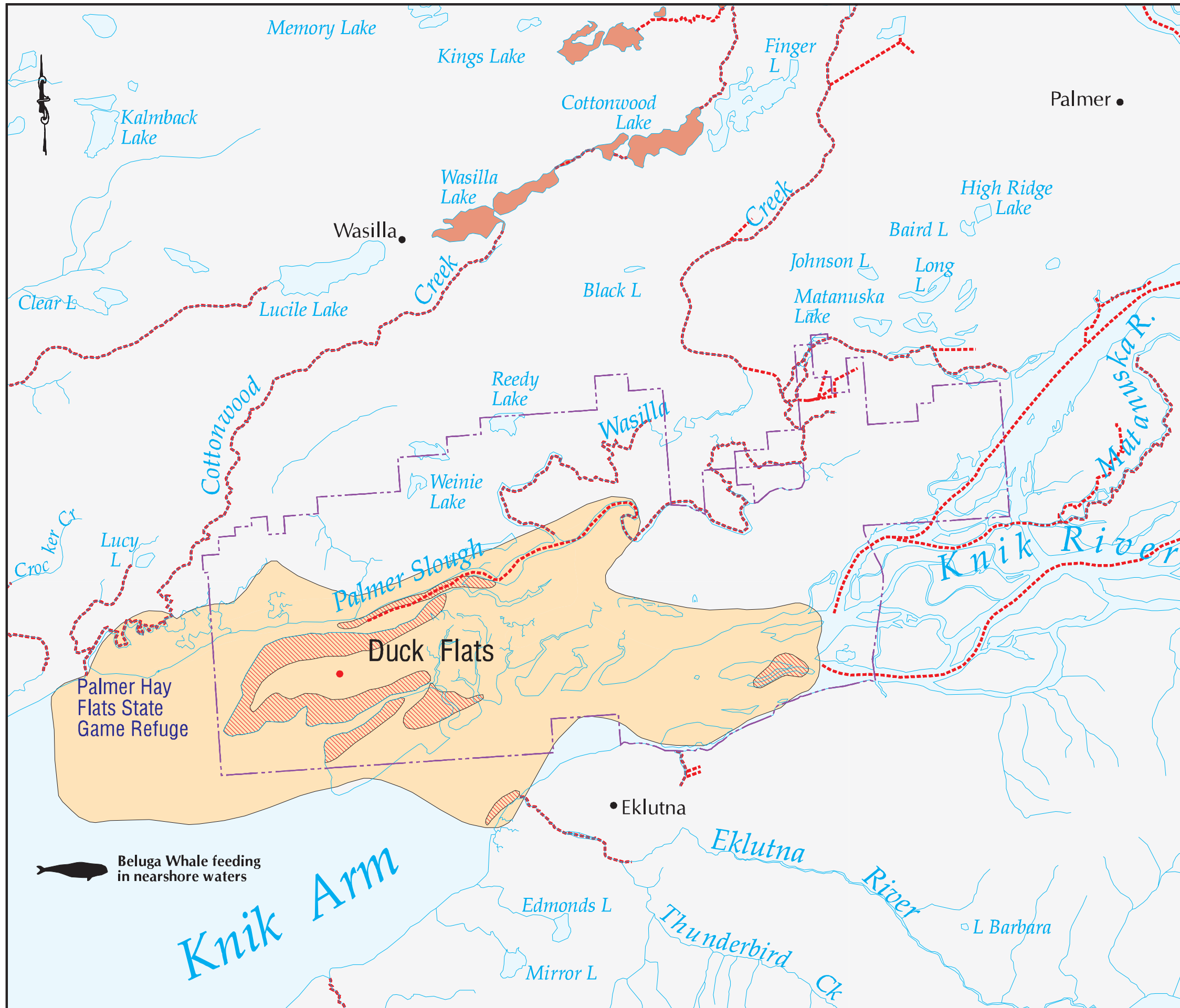
## LEGEND

-  Waterfowl Spring and Fall Concentrations
-  Waterfowl Rearing Areas
-  Anadromous Lakes
-  Anadromous Streams
-  Seabird Colony  
Less Than or Equal to 10,000 Birds
-  Palmer Hay Flats State Game Refuge Boundary

SOURCES: ADF&G 1986c; ADF&G 1996a; USFWS 1996; R. Sinnott, ADF&G, waterfowl pers. comm., 1999; M. Eagleton, NMFS, beluga whale pers. comm., 2000



State of Alaska  
Department of Fish and Game  
Habitat and Restoration Division  
June, 2000



 Beluga Whale feeding in nearshore waters