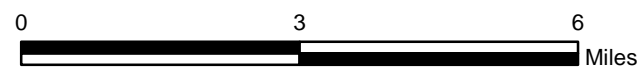
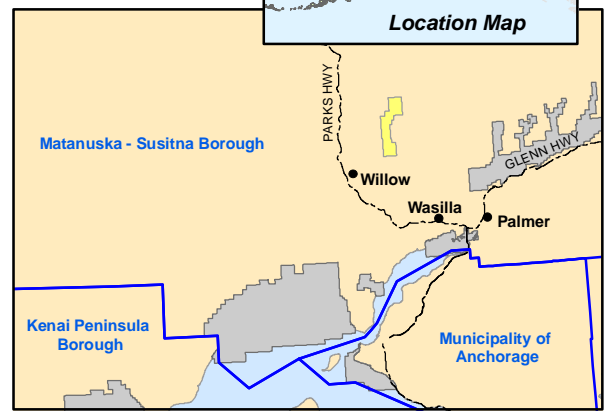


WILLOW MOUNTAIN State Critical Habitat Area Legend

- - - Estimated RS 2477

State	Other
■ State	■ Native
Federal	■ Private
■ BLM	■ Borough

Willow Mountain CHA Boundary



State of Alaska
Dept. of Fish and Game
DRAFT Sept. 2012

WILLOW MOUNTAIN State Critical Habitat Area Legend


 Caribou


Moose


 Rutting


 Calving

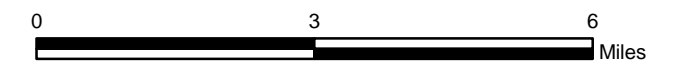
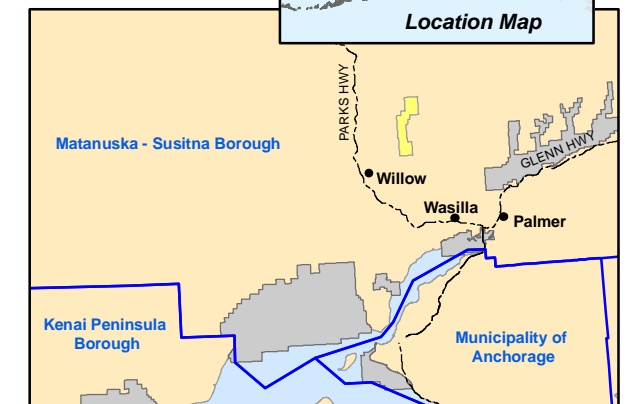
 Winter

 Both black and brown bear are known to inhabit the Willow Mountain area. There is no current estimate for the population size of either species.

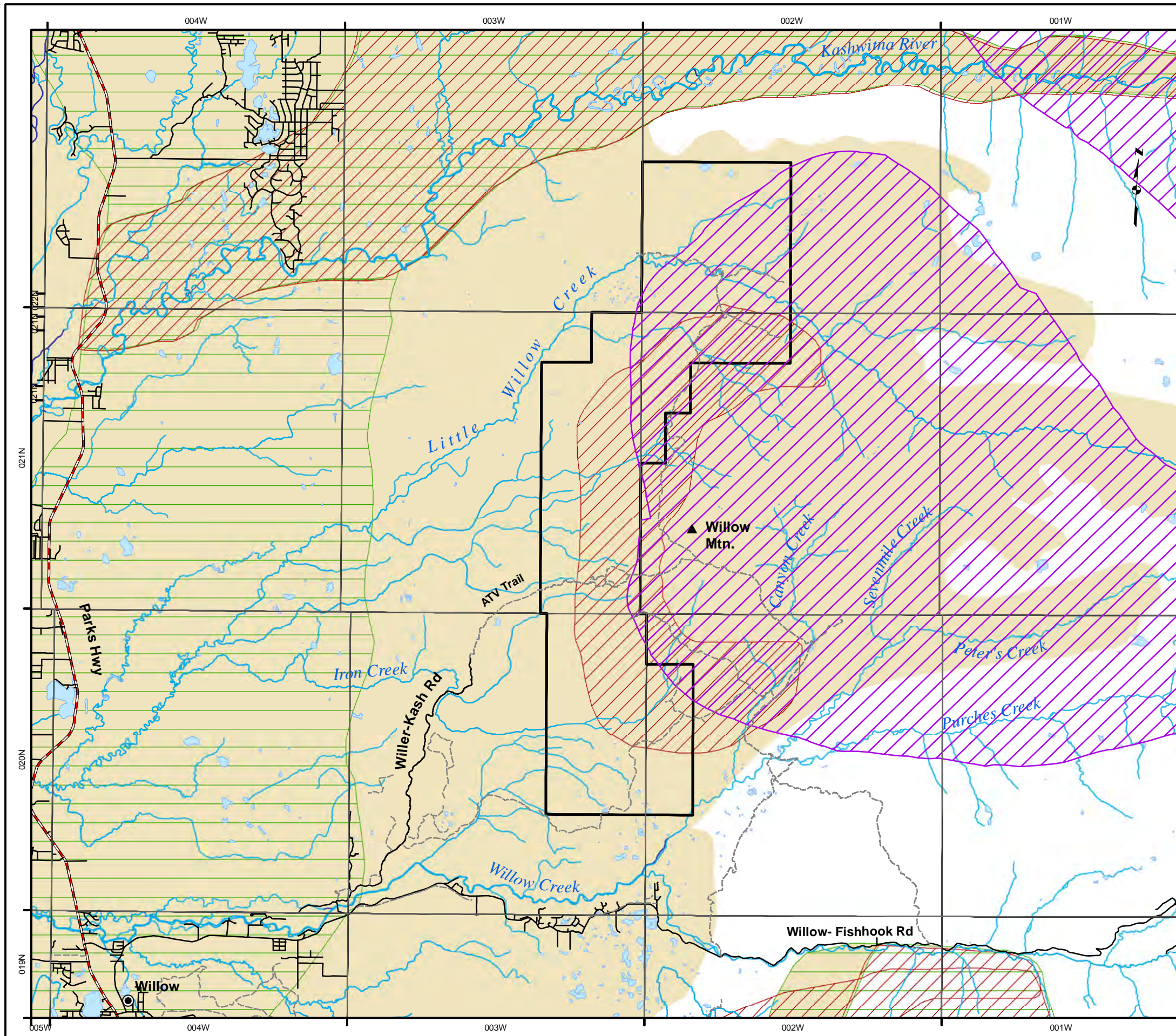
 Furbearers found in the Willow Mountain area include mink, weasels, beavers, coyotes, lynx, otter and wolves.

 Numerous species of birds have been observed in the Willow Mountain area including hawks, merlin, dippers, ravens, ptarmigan, plovers and eagles.




 Willow Mountain CHA Boundary




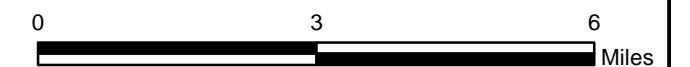
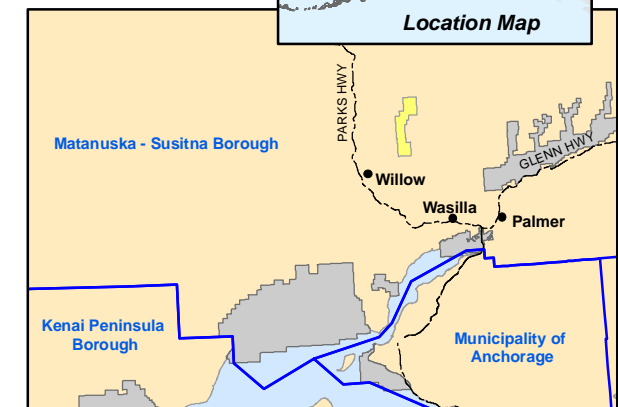
State of Alaska
Dept. of Fish and Game
DRAFT Sept. 2012



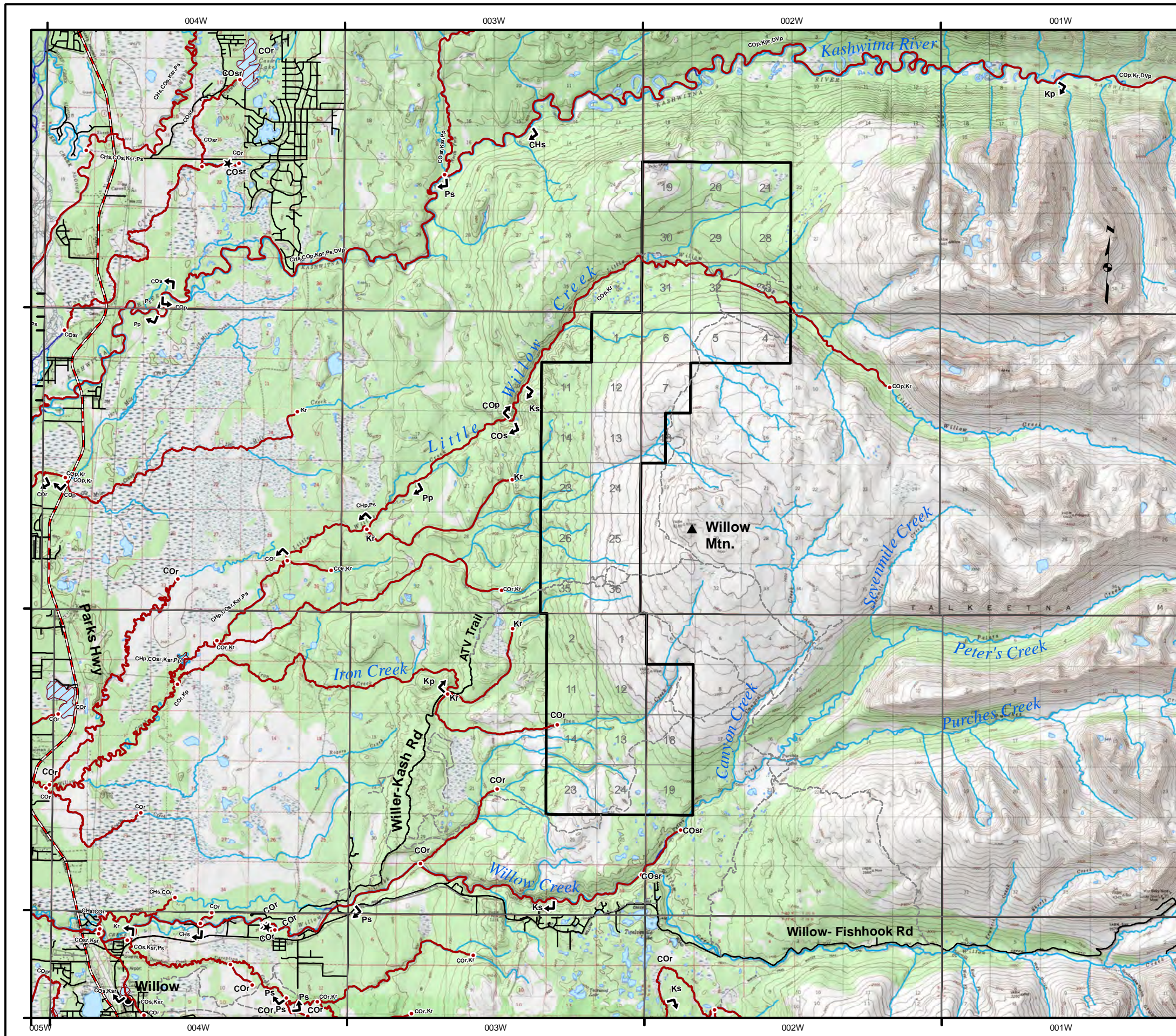
WILLOW MOUNTAIN State Critical Habitat Area Legend

- Anadromous Fish**
-  Streams
 -  Short Streams (less than 660 ft.)
 -  Lakes
- | | |
|-------------------|--------------|
| CH - Chum Salmon | p - present |
| CO - Coho Salmon | r - rearing |
| K - King Salmon | s - spawning |
| P - Pink Salmon | |
| DV - Dolly Varden | |

 Willow Mountain CHA Boundary




State of Alaska
Dept. of Fish and Game
DRAFT Sept. 2012

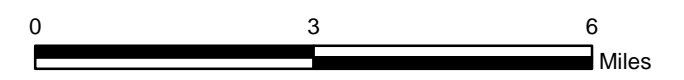
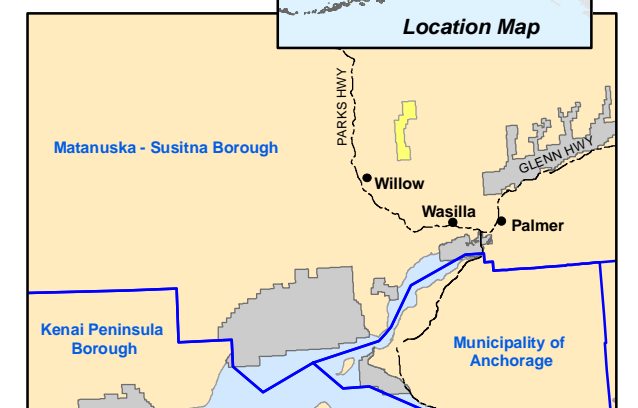
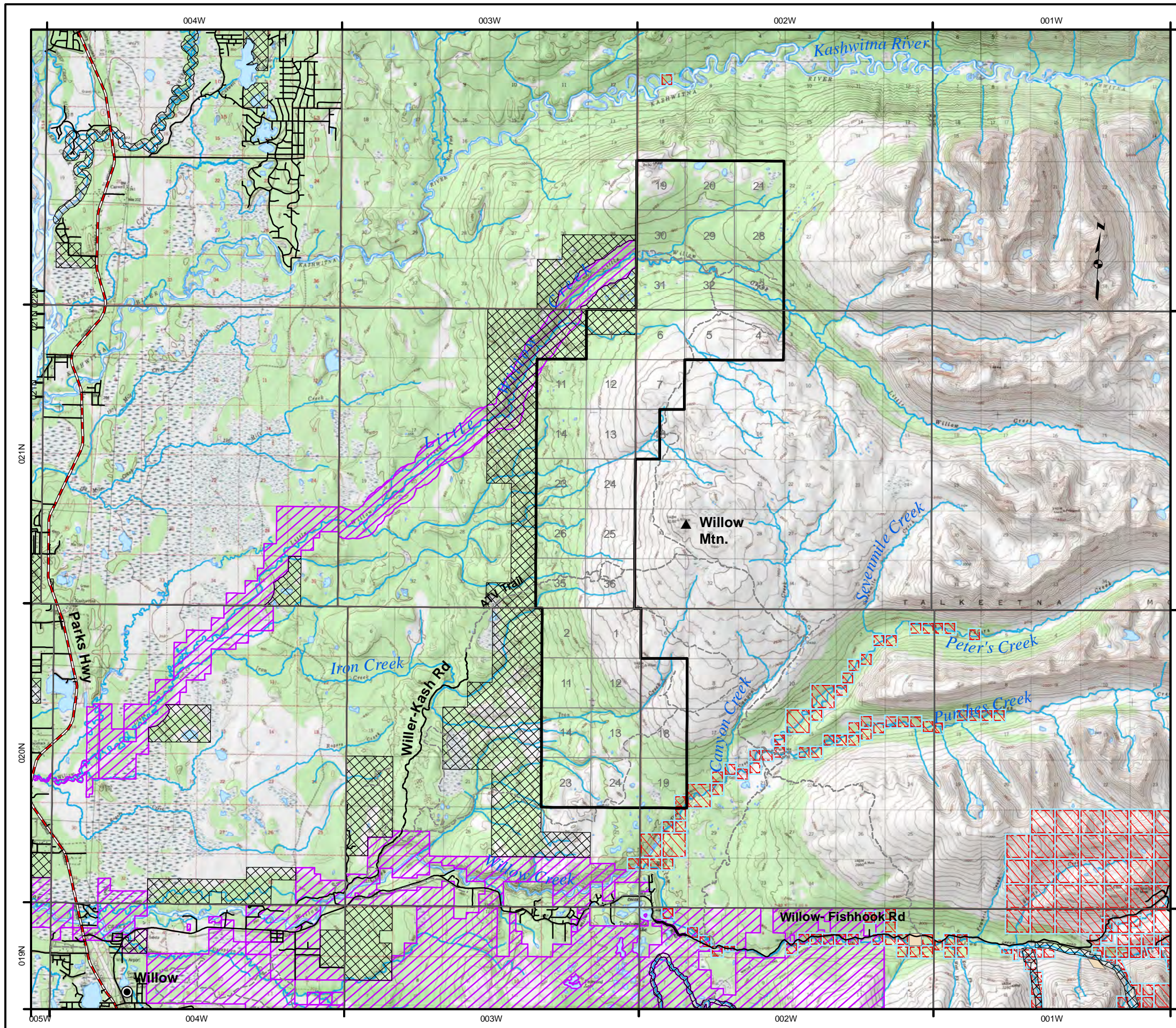


WILLOW MOUNTAIN State Critical Habitat Area Legend

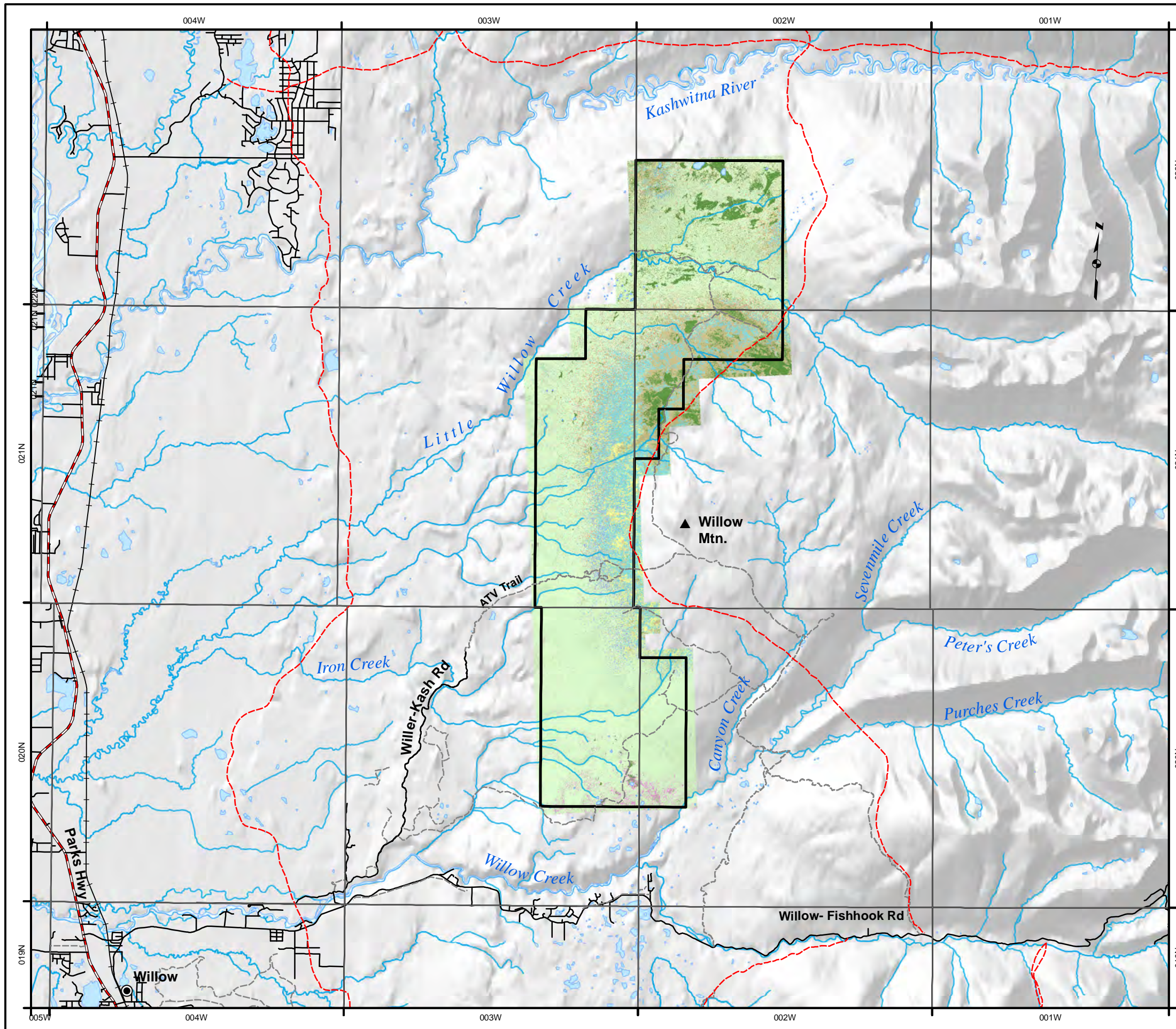
Mineral Estate

-  Mineral Order
-  Permit or Lease
-  State Mining Claim
-  Lease Hold Location

 Willow Mountain CHA Boundary



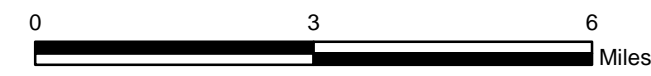
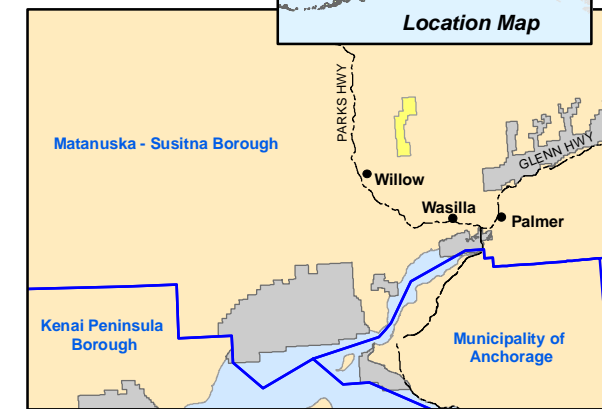
State of Alaska
Dept. of Fish and Game
DRAFT Sept. 2012



WILLOW MOUNTAIN State Critical Habitat Area Legend

- Closed dwarf tree scrub
- Closed mixed forest
- Closed tall scrub
- Ericaceous dwarf shrub
- Forb herbaceous
- Mesic graminoid herbaceous
- Mixed wood land
- Open dwarf tree scrub
- Wet (graminoid/forb/bryoid) herbaceous

Willow Mountain CHA Boundary



State of Alaska
Dept. of Fish and Game
DRAFT Sept. 2012