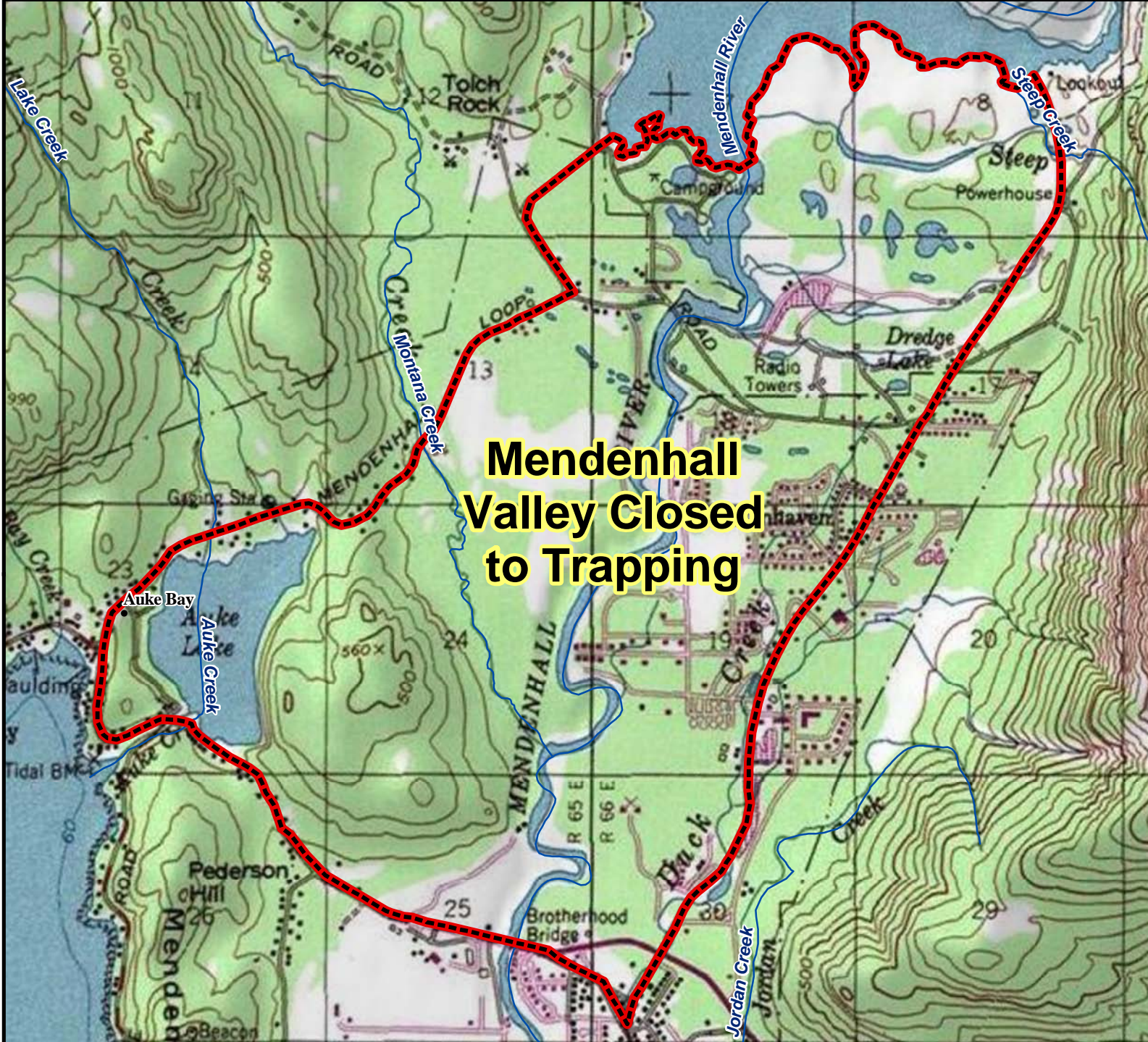


# Unit 1C

## Mendenhall Valley

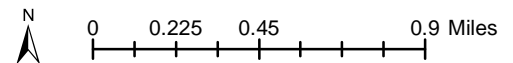
### Closed To Trapping









**Mendenhall Valley Closed to Trapping**

**AREA DESCRIPTION:** Unit 1C, that area of the Mendenhall Valley bounded on the south by the Glacier Highway, on the west by the Mendenhall Loop Road and Montana Creek Road and Spur Road to Mendenhall Lake, on the north by Mendenhall Lake, and on the east by the Mendenhall Loop Road and Forest Service Glacier Spur Road to the Forest Service Visitor Center.

The area is closed to the trapping of furbearers.



-  Closed To Trapping
-  Subunit Boundary
-  National Park/Monument
-  National Wildlife Refuge
-  Military Closure
-  Other State Areas

