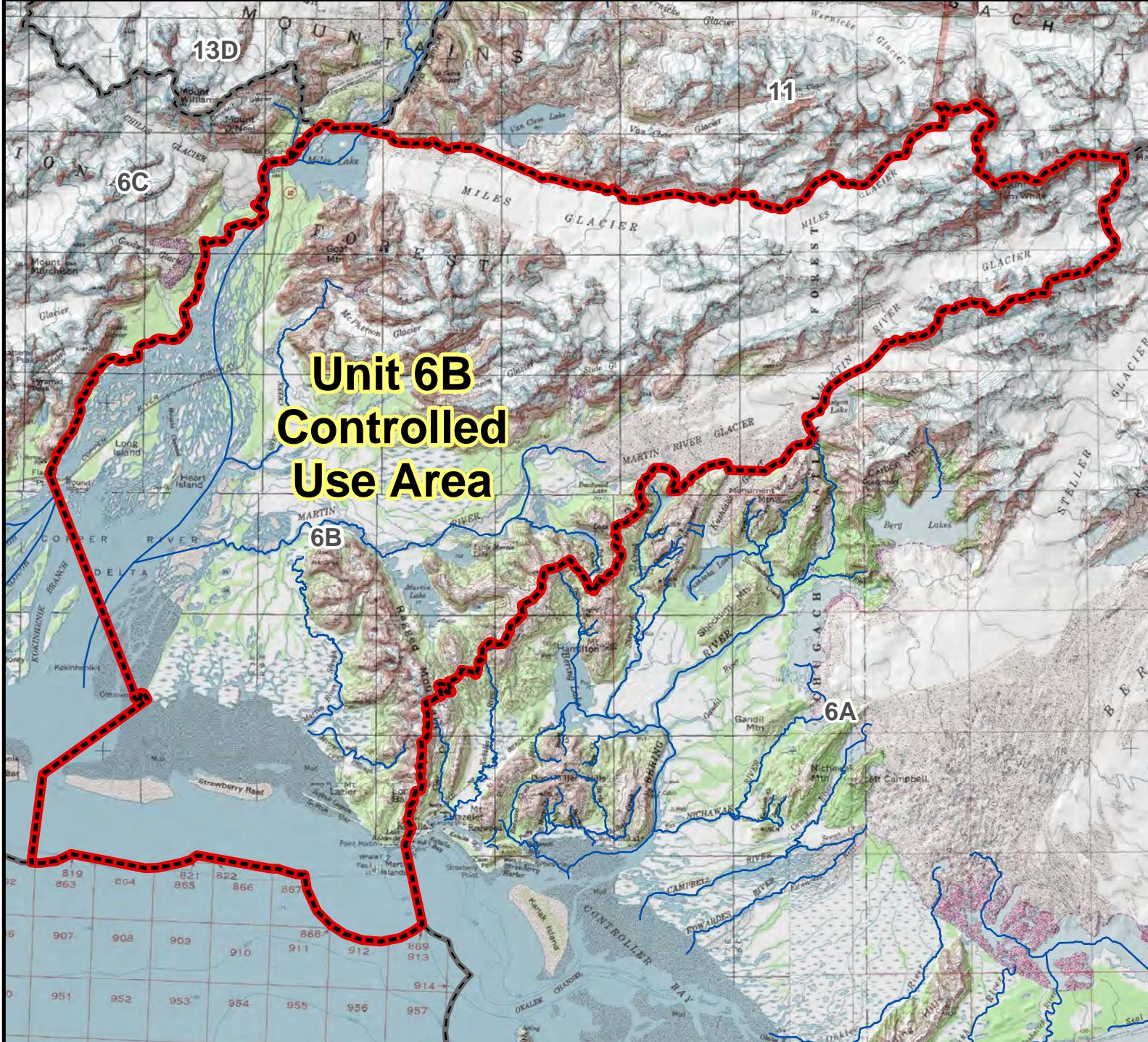


Unit 6B Unit 6B Controlled Use Area



AREA DESCRIPTION: Unit 6B.

The area is closed to the use of any motorized vehicle for moose hunting or transporting hunters or their gear from August 15 through September 4, with the exception of vehicles on the Copper River Highway, Carbon Mountain Road, the Clear Creek boat launch, and boats crossing at mile 36 bridge which can be conducted in a substantially straight line and no more than ¼ mile above or below the bridge. Moose may not be taken until after 3:00 a.m. on the day following the day which any motorized vehicle, except vehicles on the Copper River highway, Carbon Mountain Road, the Clear Creek boat launch, and boats crossing at mile 36 bridge which can be conducted in a substantially straight line and no more than ¼ mile above or below the bridge, is used for transportation, from September 5 through October 31.

