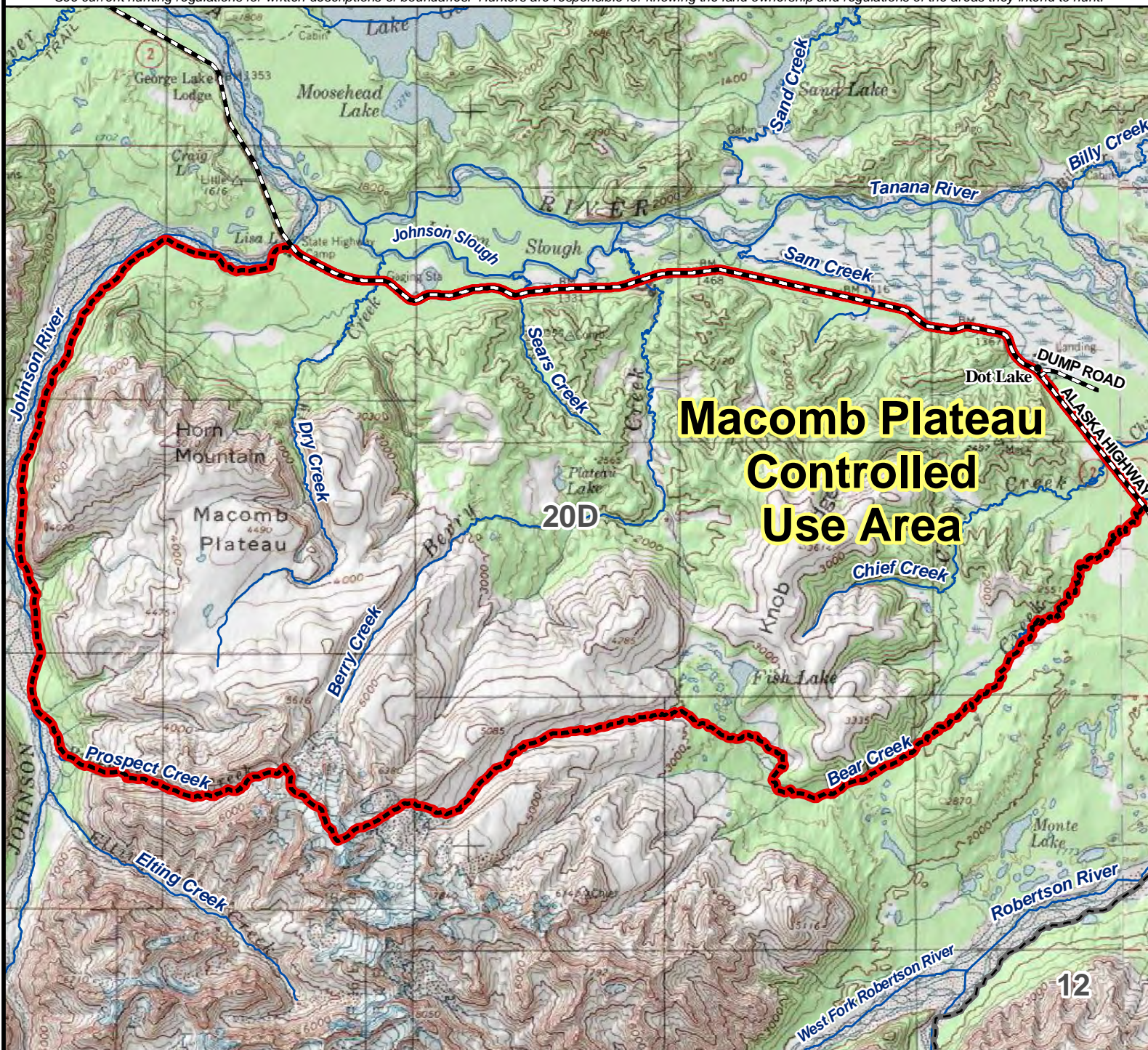


Unit 20D Macomb Plateau Controlled Use Area

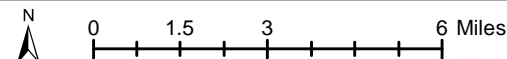
This map is intended for hunt planning use, not for determining legal property or regulatory boundaries. Content is compiled from various sources and is subject to change without notice. See current hunting regulations for written descriptions of boundaries. Hunters are responsible for knowing the land ownership and regulations of the areas they intend to hunt.



**Macomb Plateau
Controlled
Use Area**

AREA DESCRIPTION: Unit 20D, the area consists of that portion of Unit 20D south of the Alaska Highway, draining into the south side of the Tanana River between the east bank of the Johnson River upstream to Prospect Creek, and the east bank of Bear Creek at mile 1357.3 of the Alaska Highway.

The area is closed to the use of any motorized vehicle for hunting, including the transportation of hunters, their hunting gear, or parts of game, from August 10 through September 30, except for a floatplane on Fish Lake and motorized vehicles, including aircraft, to, from, and on the Dry Creek Airstrip at mile 1379 of the Alaska Highway; however, this provision does not prohibit the transportation into the area of game meat that has been processed for human consumption.



- Controlled Use Area
- Subunit Boundary
- Closed Area
- Management Area
- National Park/Monument
- National Wildlife Refuge
- Military Closure
- Other State Areas
- Closed to Hunting

