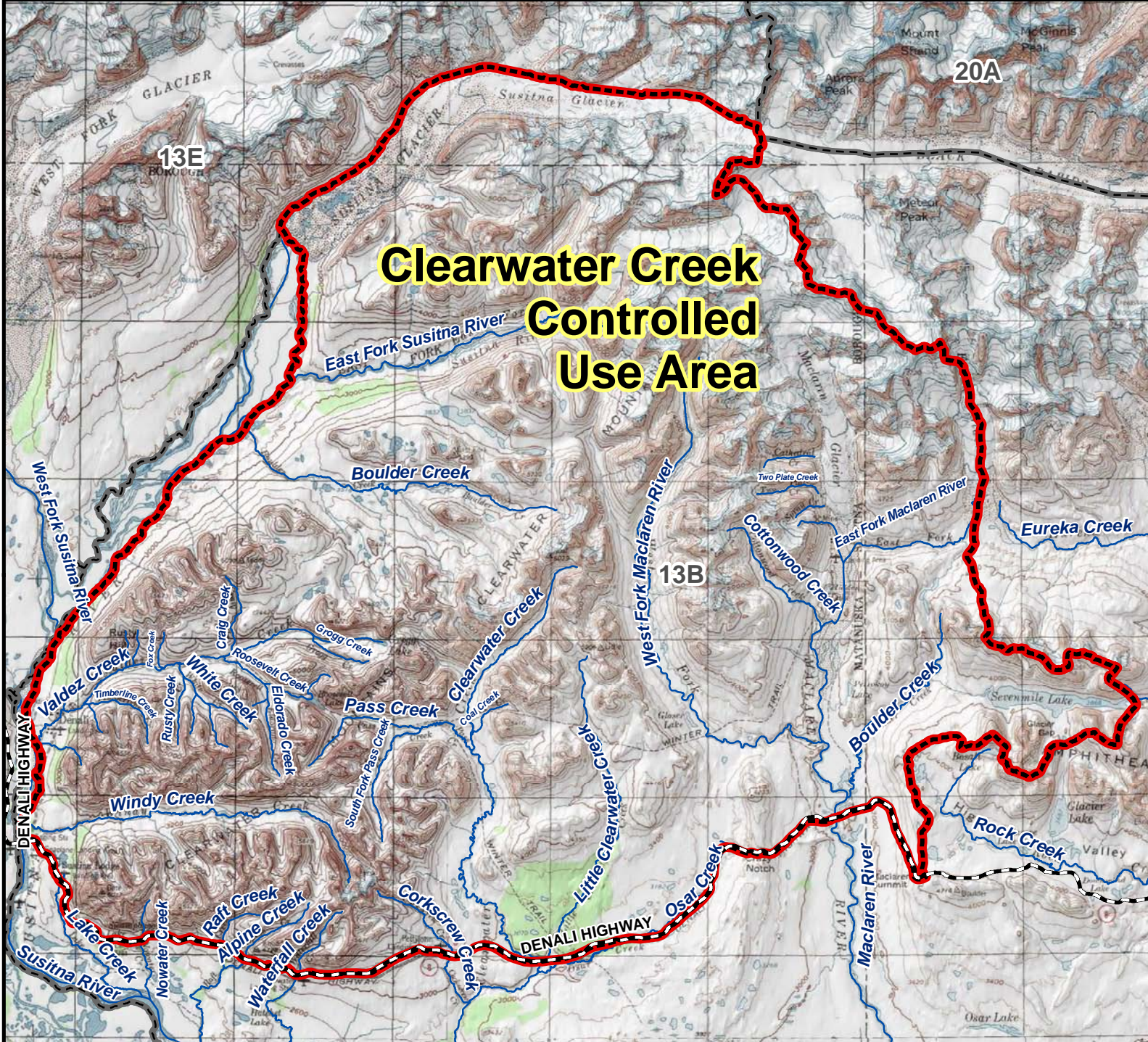


# Unit 13B Clearwater Creek Controlled Use Area



**AREA DESCRIPTION:** Unit 13B, the area consists of that portion of Unit 13B north of the Denali Highway, west of and including the Maclaren River drainage, east of and including the eastern bank drainages of the Middle Fork of the Susitna River downstream from and including the Susitna Glacier, and the eastern bank drainages of the Susitna River downstream from its confluence with the Middle Fork;

The area is closed to the use of any motorized vehicle for hunting, including the transportation of hunters, their hunting gear, or parts of game, except for brown/grizzly bears, wolves, and small game from March 15 through June 30; however, this provision does not prohibit motorized access, or transportation of game, on the Denali Highway and adjacent highway vehicle parking areas.

**Reason for the Special Area**

This controlled use area was created in 1971 to protect moose and caribou from overharvest. This area is bounded on the south by the Denali Highway and there are good numbers of moose in this portion of the Alaska Range. Caribou from the Nelchina herd are in the area during the summer and early fall. The area is popular for walk-in hunters as they have a good chance to take animals without competition from more mobile hunters with off-road vehicles.

N

0 2.5 5 10 Miles

- Controlled Use Area
- Subunit Boundary
- Closed Area
- Management Area
- National Park/Monument
- National Wildlife Refuge
- Military Closure
- Other State Areas
- Closed to Hunting

