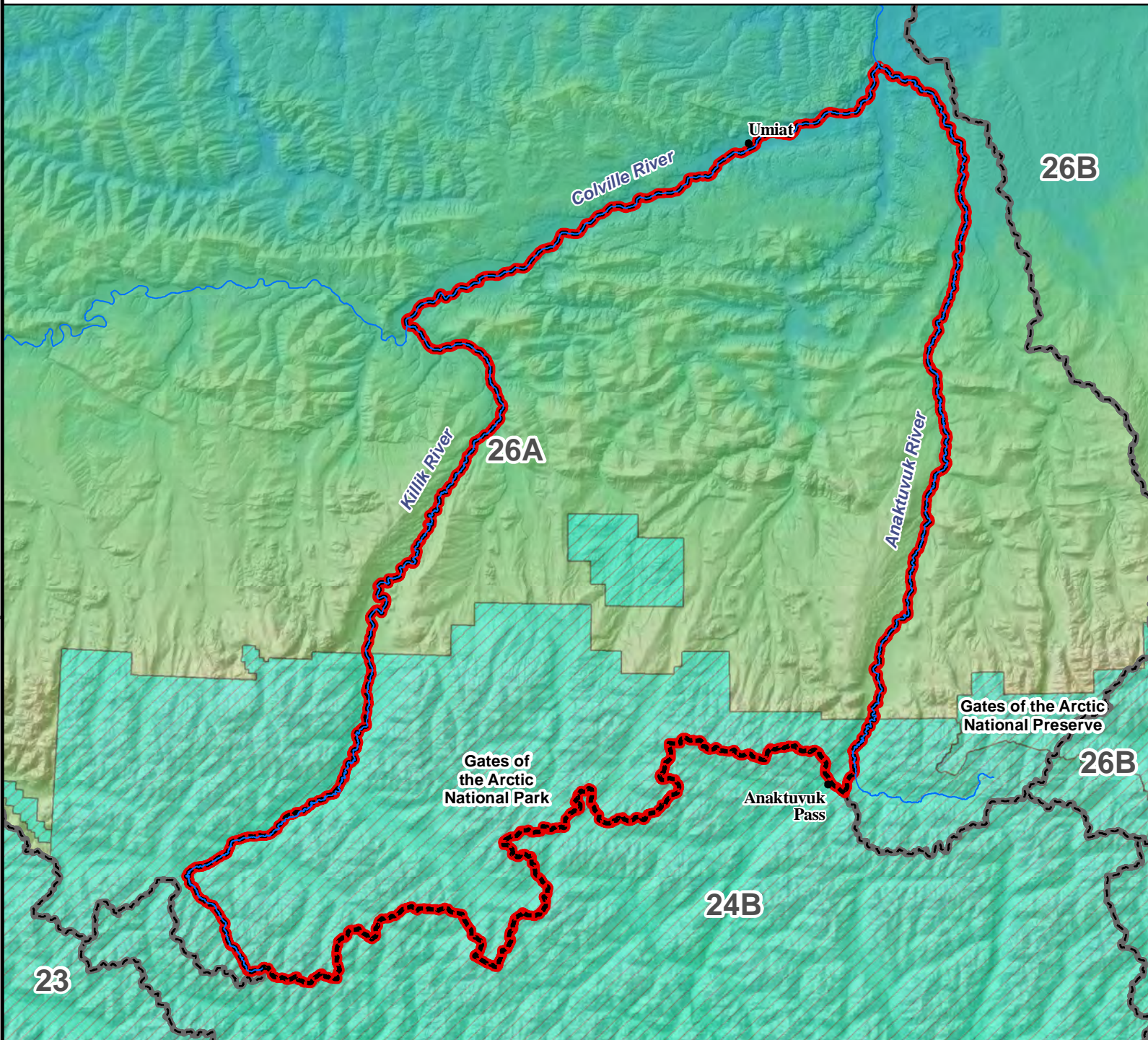
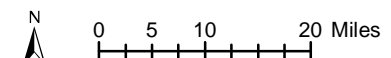


Unit 26A Anaktuvuk Pass Controlled Use Area



AREA DESCRIPTION: Unit 26A, the area consists of that portion of Unit 26A bounded on the west by the east bank of the Killik River beginning at its intersection with the game management boundary between Units 24 and 26A, then north along the Killik River to its confluence with the Colville River, then bounded on the north by the south bank of the Colville River, east along the Colville River to its confluence with the Anaktuvuk River, then bounded on the east by the west bank of the Anaktuvuk River, south along the Anaktuvuk River to the game management boundary between Units 24 and 26A, then west along the game management boundary between Units 24 and 26A to the point of origin.

The area is closed to the use of aircraft for hunting black bear, brown bear, caribou, and Dall sheep, including the transportation of black bear, brown bear, caribou, and Dall sheep hunters, their hunting gear, or parts of black bear, brown bear, caribou, or Dall sheep from August 15 through October 15; however, this provision does not apply to the transportation of black bear, brown bear, caribou or Dall sheep hunters, their hunting, gear, or parts of black bear, brown bear, caribou, or Dall sheep by aircraft between publicly owned airports.



- Controlled Use Area
- Subunit Boundary
- Closed Area
- Management Area
- National Park/Monument
- National Wildlife Refuge
- Military Closure
- Other State Areas
- Closed to Hunting

