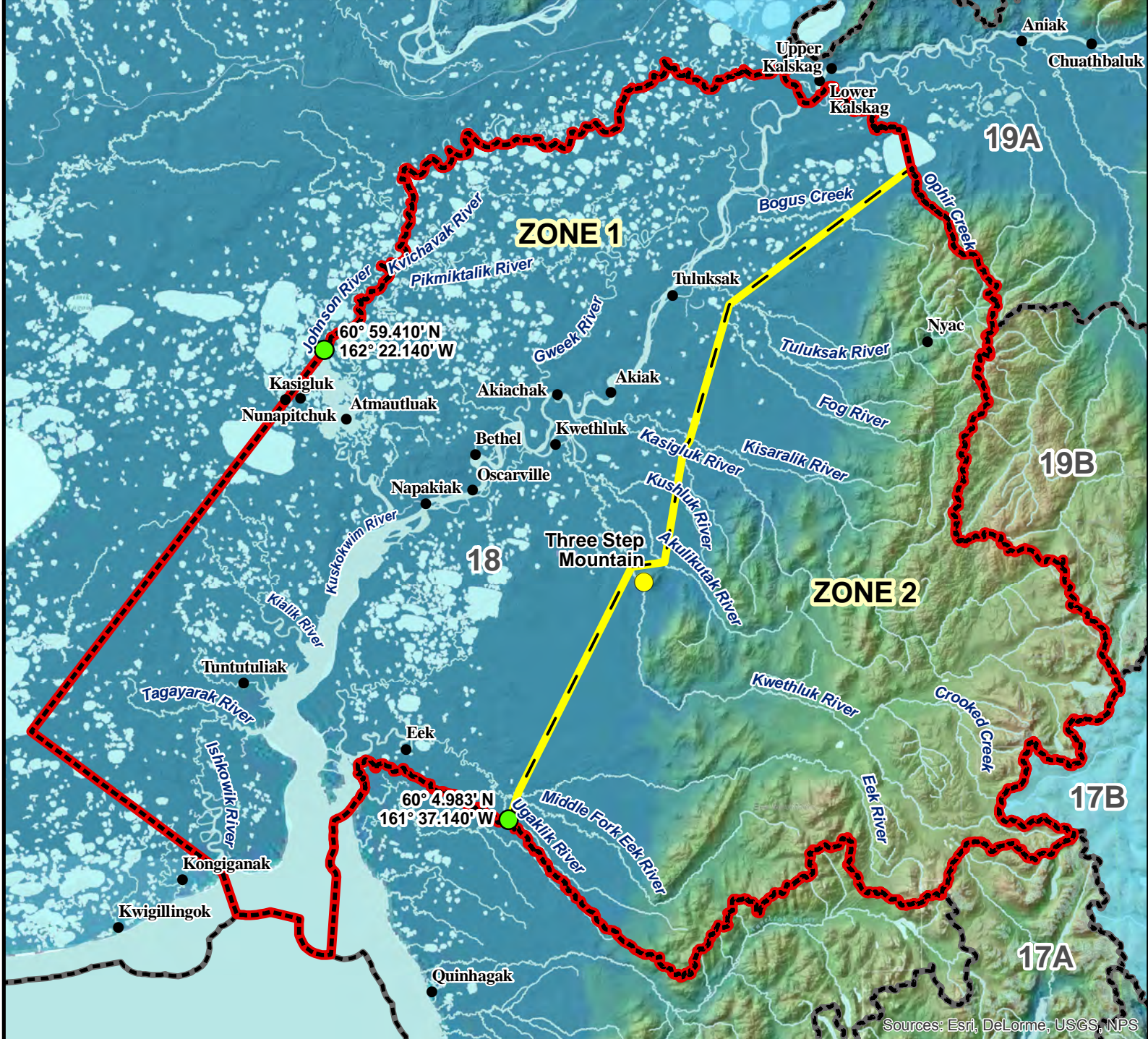


RM615 Moose Registration Permit Hunt



Sources: Esri, DeLorme, USGS, NPS

AREA DESCRIPTION: Zone 1:

In Unit 18, all Kuskokwim River drainages north and west of a line beginning at the confluence of Whitefish Lake and Ophir Creek at the Unit 18 boundary and continuing southwest to the confluence of Tuluksak and Fog Rivers, then southerly to the lower Kisaralik River-Kasigluk River cutoff of the Kisaralik River, then southwesterly to the lower Kisaralik River-Kasigluk River cutoff of the Kasigluk River, then southwesterly to the Akulikutak River where the snowmachine trail crosses the river from the east side of Three Step Mountain, then westerly to the confluence of Kwethluk River and Magic Creek, then southwesterly to the confluence of Eek River and Middle Fork Eek River, then southwesterly to the Unit 18 boundary at 60° 4.983' N, 161° 37.140' W; and all drainages easterly of a line from the mouth of the Ishkowiik River to the closest point of Dall Lake, then to the east bank of the Johnson River at its entrance into Nunavakanukaslak Lake at 60° 59.41' N, 162° 22.14' W, continuing upriver along a line ½ mile south and east of, and paralleling a line along the southerly bank of the Johnson River to the confluence of the east bank of Crooked Creek, then continuing upriver along the east bank of Crooked Creek to the outlet at Arhyot Lake, then following the south bank of Arhyot Lake easterly to the Unit 18 boundary.

Zone 2:
In Unit 18, all Kuskokwim River drainages south and east of a line beginning at the confluence of Whitefish Lake and Ophir Creek at the Unit 18 boundary and continuing southwest to the confluence of Tuluksak and Fog Rivers, then southerly to the lower Kisaralik River-Kasigluk River cutoff of the Kasigluk River, then southwesterly to the lower Kisaralik River-Kasigluk River cutoff of the Kasigluk River, then southwesterly to the Akulikutak River where the snowmachine trail crosses the river from the east side of Three Step Mountain, then westerly to the confluence of Kwethluk River and Magic Creek, then southwesterly to the confluence of Eek River and Middle Fork Eek River, then southwesterly to the Unit 18 boundary at 60° 4.983' N, 161° 37.140' W.

N

0 5 10 20 Miles

- Hunt Area
- Subunit Boundary
- Closed Area
- Controlled Use Area
- Management Area
- National Park/Monument
- National Wildlife Refuge
- Military Closure
- Other State Areas
- Closed to Hunting