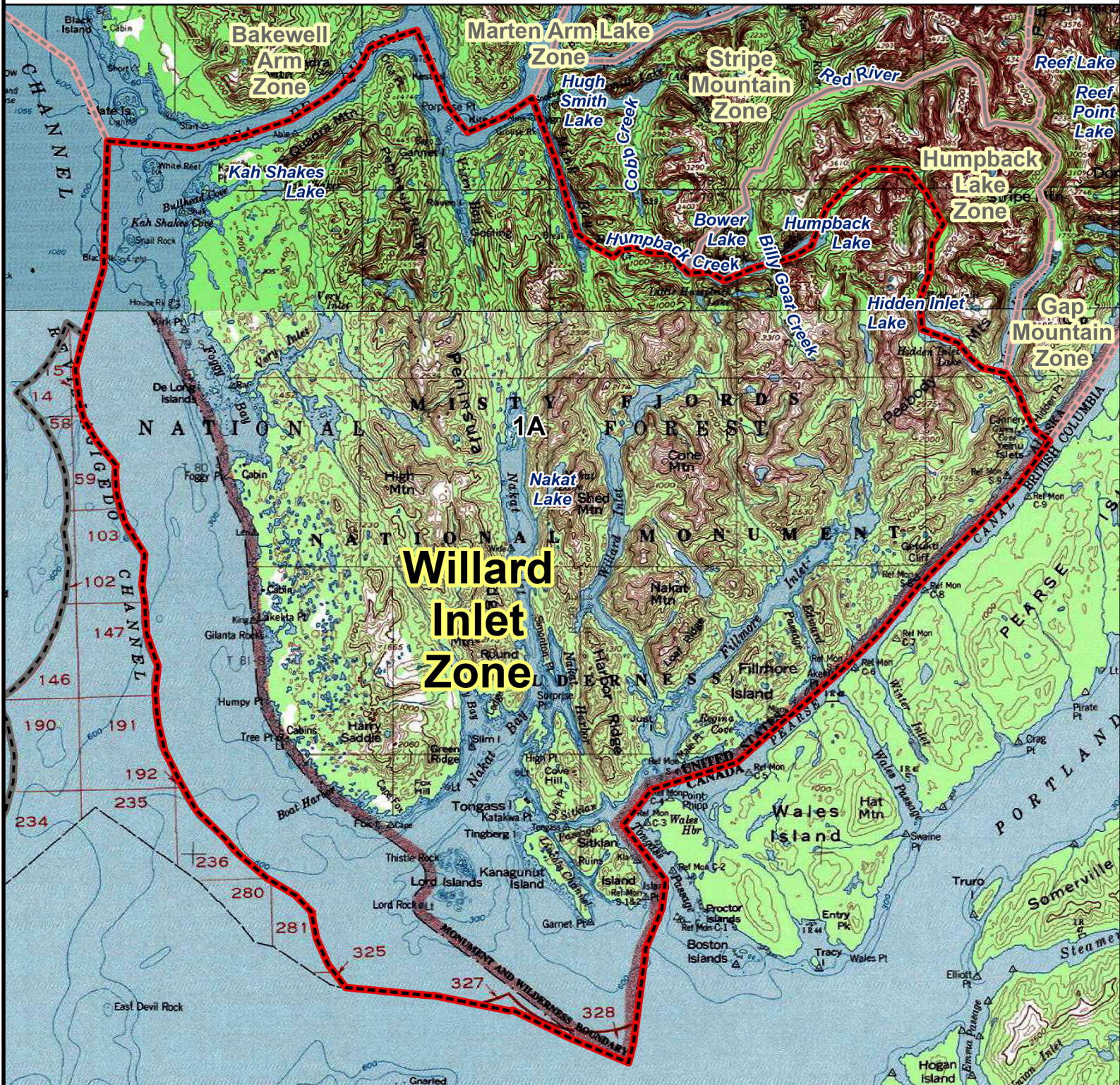


RG001/RG002 MOUNTAIN GOAT HUNT

Willard Inlet Hunt Zone



Willard Inlet Zone: Originating where Revillagigedo Channel and Boca De Quadra meet, east following Boca De Quadra to where it meets Mink Bay, south through Mink Bay to the outlet of Humpback Creek, east through Humpback Creek to Humpback Lake, east through Humpback Lake to the drainage that feeds Humpback Lake, northeast through the valley, then a line south between two unnamed peaks at 2950 ft. and 2835 ft., south following the valley to Hidden Inlet Lake, southeast through Hidden Inlet Lake to where the lake empties into Hidden Inlet, southeast through Hidden Inlet to Pearse Canal, southwest through Pearse Canal to where it meets Tongass Passage, southeast through Tongass Passage, south to Dixon Entrance, north along Revillagigedo Channel to the point of origin.

0 5
Miles

