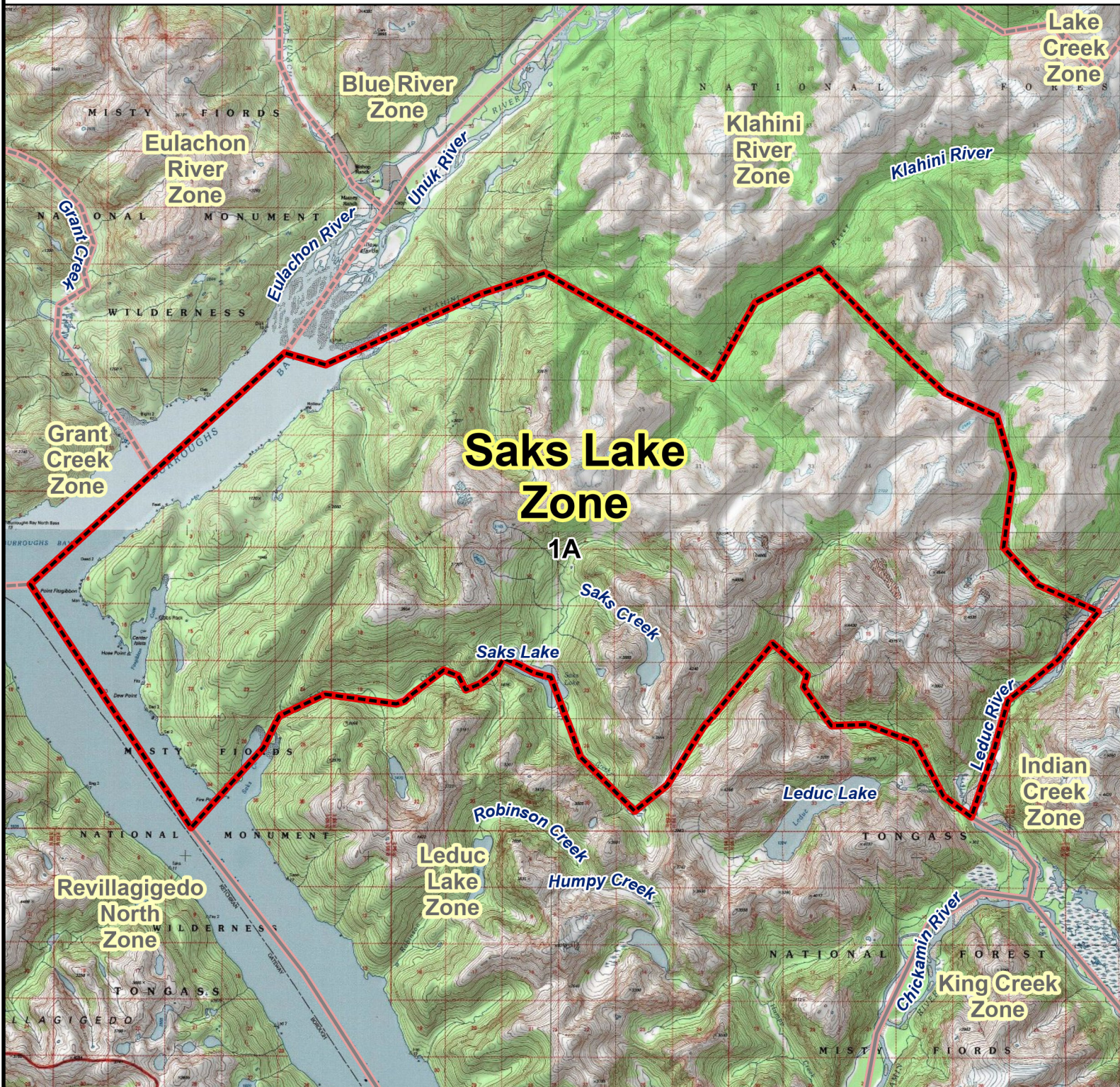


RG001/RG002 MOUNTAIN GOAT HUNT

Saks Lake Hunt Zone



Saks Lake Zone: Originating where the Klahini River meets Burroughs Bay, northeast through the Klahini River to the GPS point of N 56.066392, W -130.880318, southwest up the drainage and over the saddle, south through the drainage that empties into the Leduc River, south to the point where the Leduc River meets the drainage from Leduc Lake, northwest traveling up the drainage to GPS coordinates N 55.968717, W -130.897842, southwest from the point traveling up drainage, over the saddle to the headwaters of Saks Creek, following Saks Creek to where it meets the head of Saks Cove, southeast through Saks Cove to where the cove meets Behm Canal, northwest along Behm Canal to where it meets Burroughs Bay, northeast through Burroughs Bay to the point of origin.

