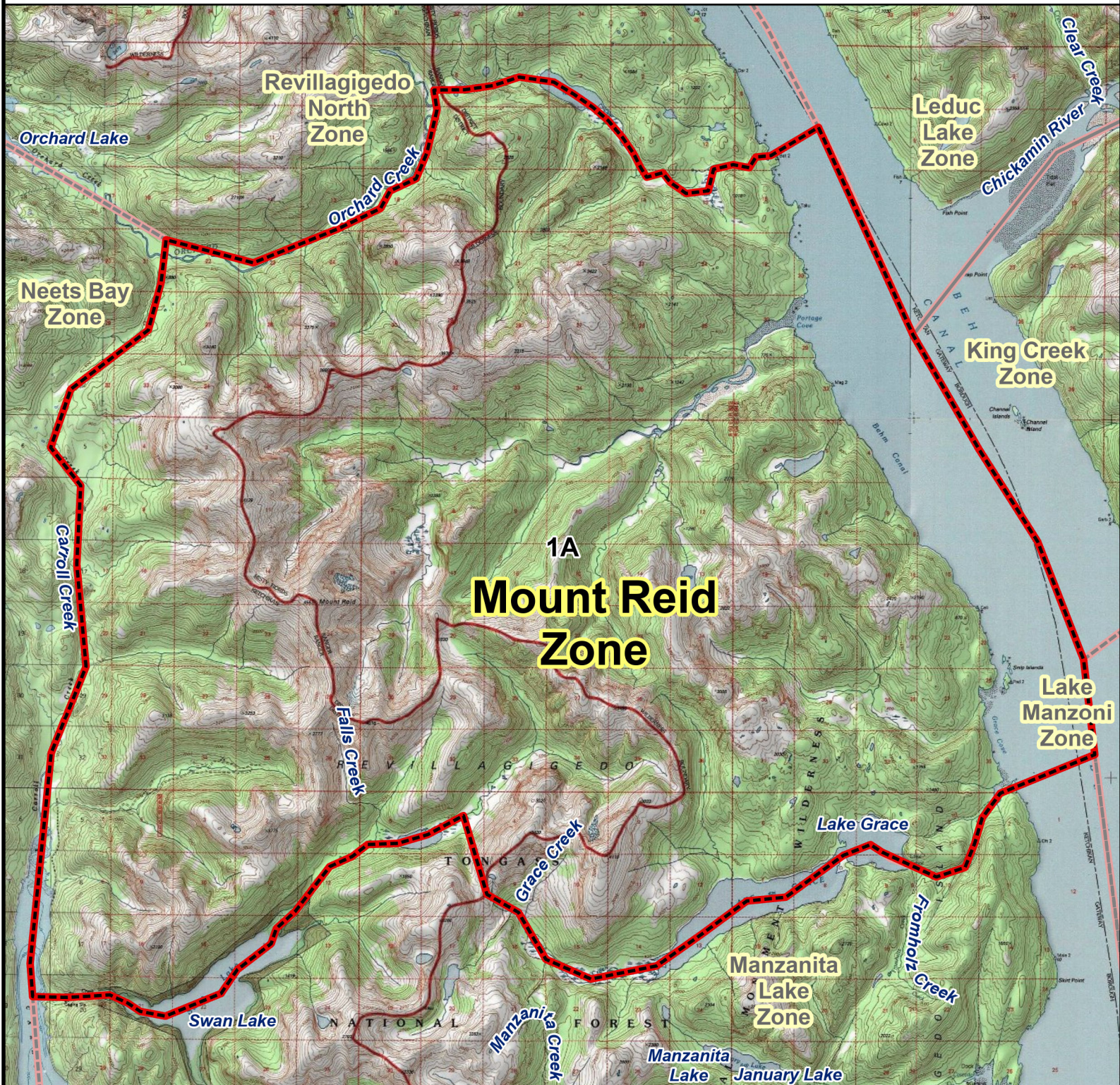


RG001/RG002 MOUNTAIN GOAT HUNT

Mount Reid Hunt Zone



Mount Reid Zone: Originating at GPS coordinates N 55.786949, W -131.310263 in Orchard Creek, south through the valley into the Carroll Creek drainage, south through the Carroll Creek drainage and Carroll Inlet to the mouth of Falls Creek, east up Falls Creek through Swan Lake and up the Swan Lake drainage to an unnamed lake at GPS coordinates N 55.651205, W -131.204569, southwest up the small drainage and over the saddle, into the Grace Creek drainage to where it empties into Grace Lake, through Grace Lake to the mouth of Grace Creek, east along Grace Creek to where it enters Behm Canal, north through Behm Canal to the unnamed drainage emptying into Behm Canal north of Portage Cove at GPS coordinates N 55.810644, W -131.061766, west up the drainage and then north to an unnamed lake with elevation 199 ft., east over the saddle to where the drainage enters Orchard Creek, southwest down Orchard Creek to the point of origin.

