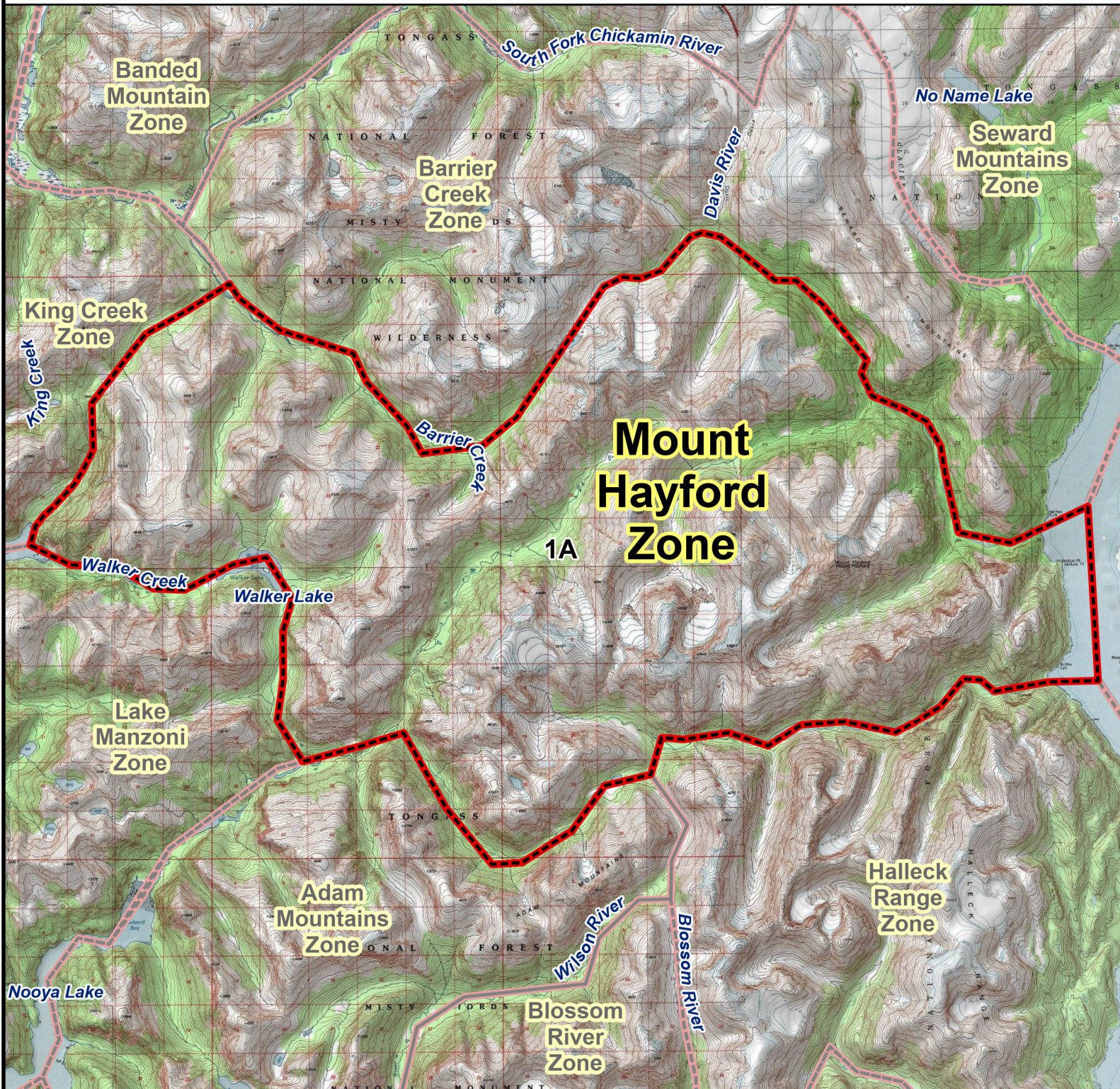


# RG001/RG002 MOUNTAIN GOAT HUNT

## Mount Hayford Hunt Zone



**Mount Hayford Zone:** Originating at GPS coordinates N 55.714748, W -130.147901, west up the unnamed drainage to the unnamed lake at GPS coordinates N 55.685495, W -130.402671, southwest from the unnamed lake through the valley along the Adam Mountains, west to the drainage that flows from Walker Lake, north up the drainage to Walker Lake, west through Walker Lake, west from Walker Lake to Walker Creek, west along Walker Creek to where it empties into Walker Cove, northeast from the head of Walker Cove through the drainage that follows into the valley and flows from Barrier Creek, southeast from where the drainage meets Barrier Creek, to the head of Barrier Creek, through the lake at 3038 ft elevation, east through the drainage that flows into the Davis River, southeast through the Davis River to where it meets the Portland Canal and back to the point of origin.

