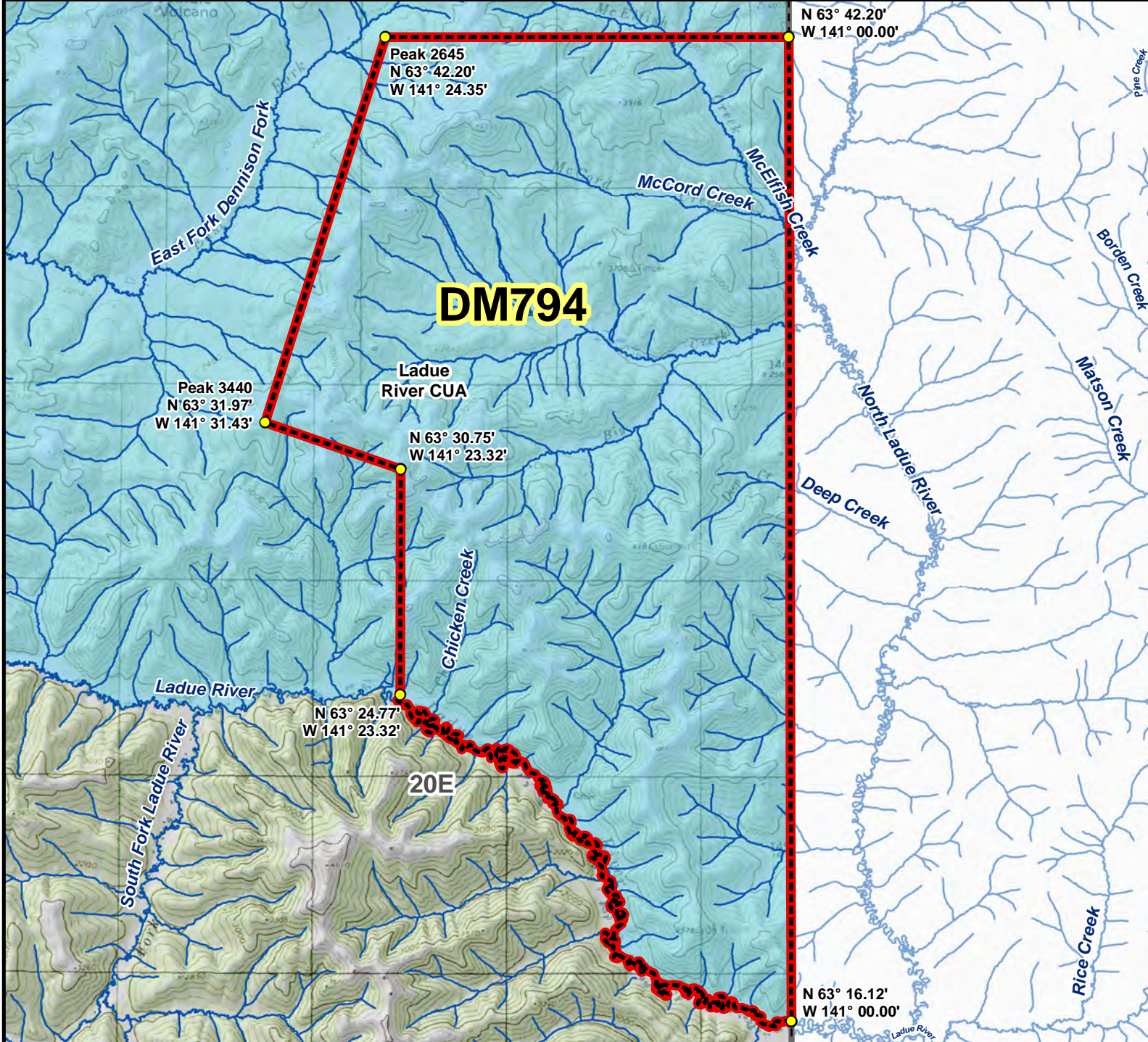
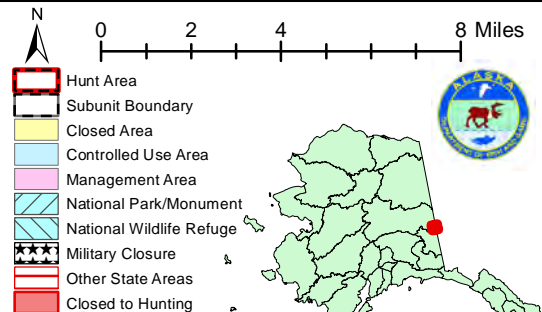


DM794 Moose Drawing Permit Hunt

This map is intended for hunt planning use, not for determining legal property or regulatory boundaries. Content is compiled from various sources and is subject to change without notice. See current hunting regulations for written descriptions of boundaries. Hunters are responsible for knowing the land ownership and regulations of the areas they intend to hunt.



AREA DESCRIPTION: Unit 20E, that portion of the Ladue River Controlled Use Area bounded on the north by a line from Peak 2645 (N63° 42.20', W141° 24.35') east to the Alaska-Yukon border at N63° 42.20', W141° 00.00'; on the east by the Alaska-Yukon border; on the south by the north bank of the Ladue River from the Alaska-Yukon border at N63° 16.12', W141° 00.00'; upstream to N63° 24.77', W141° 23.32'; and on the west by a line connecting the points from the north bank of the Ladue River to the unnamed peak at N63° 30.75', W141° 23.32' to Peak 3440 at N63° 31.97', W141° 31.43' then a line to Peak 2645.



Please refer to the Alaska Hunting Regulations booklet for bag type, seasons, and additional regulations concerning this hunt.