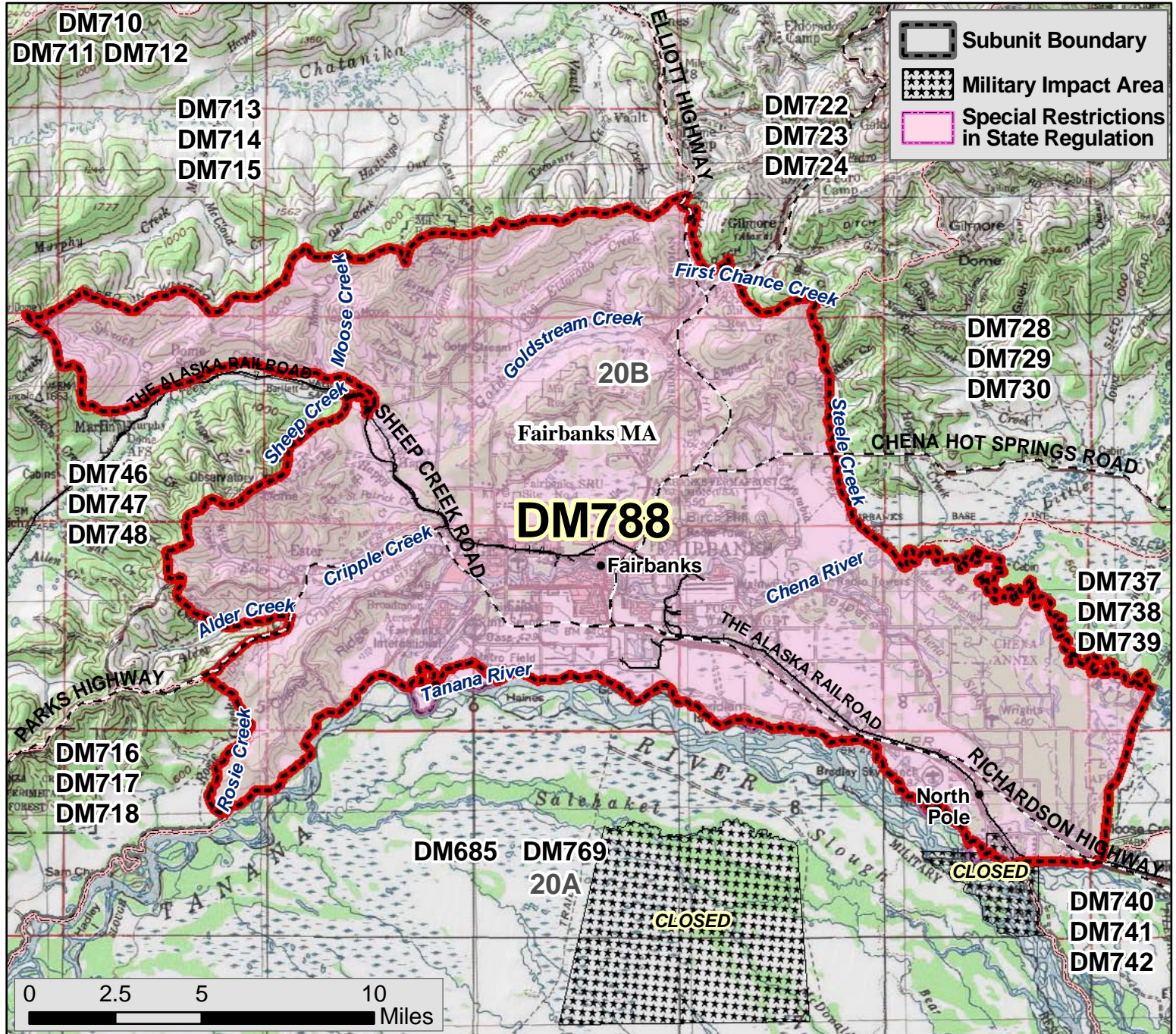




DM788 - Moose Drawing Permit Hunt



AREA DESCRIPTION FOR DM788 - Moose - Drawing Permit Hunt

HUNT AREA: Fairbanks Management Area - That portion of Unit 20B bounded by a line from the confluence of Rosie Creek and the Tanana River, northerly along Rosie Creek to the middle fork of Rosie Creek through section 26 to the Parks Highway, east along the Parks Highway to Alder Creek, then upstream along Alder Creek to its confluence with Emma Creek, then upstream along Emma Creek to its headwaters, then northerly along the hydrographic divide between Goldstream Creek drainages and Cripple Creek drainages to the summit of Ester Dome, then down Sheep Creek to its confluence with Goldstream Creek, then easterly along Goldstream Creek to Sheep Creek Road, then north on Sheep Creek Road to Murphy Dome Road, then west on Murphy Dome Road to Old Murphy Dome Road, then east on Old Murphy Dome Road to the Elliott Highway, then south on the Elliott Highway to Davidson Ditch, then southeasterly along the Davidson Ditch to its confluence with the tributary to Goldstream Creek in Section 29, then downstream along the tributary to its confluence with Goldstream Creek, then in a straight line to First Chance Creek, then up First Chance Creek to the Summit of Tungsten Hill, then southerly along Steele Creek to its intersection with the Trans-Alaska Pipeline right of way, then southeasterly along the easterly edge of the Trans-Alaska Pipeline right of way to the Chena River, then along the north bank of the Chena River to the Moose Creek dike, then southerly along the Moose Creek dike to its intersection with the Tanana River, and then westerly along the north bank of the Tanana River to the point of beginning. Certified bowhunters only.

Source maps: USGS 1:63,360 Big Delta, Circle, Fairbanks, Livengood