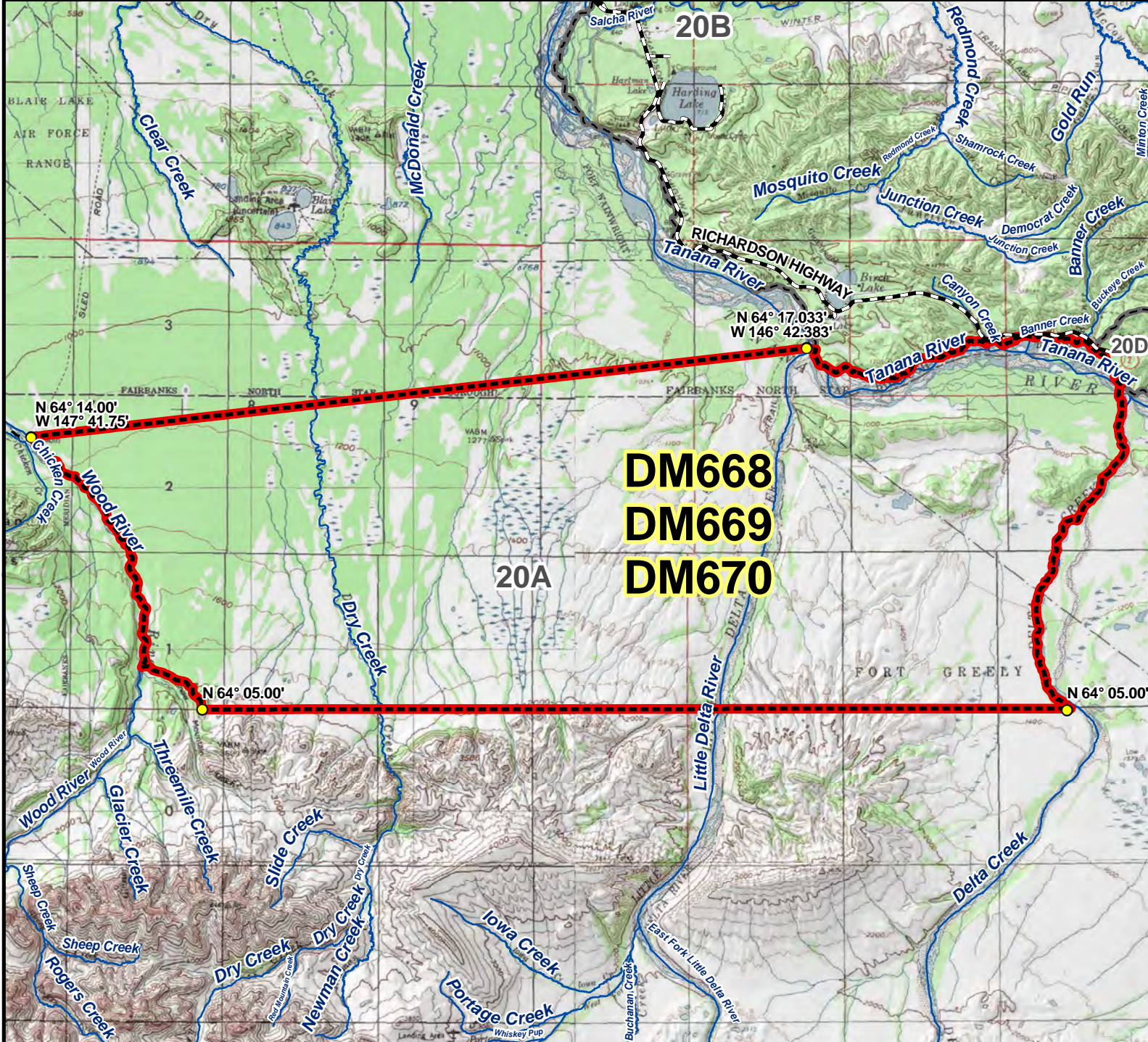


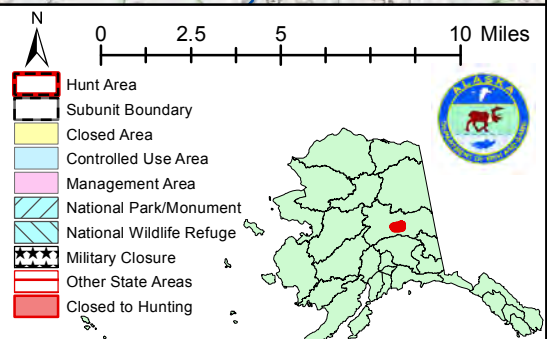
DM668 DM669 DM670 Moose Drawing Permit Hunt

This map is intended for hunt planning use, not for determining legal property or regulatory boundaries. Content is compiled from various sources and is subject to change without notice. See current hunting regulations for written descriptions of boundaries. Hunters are responsible for knowing the land ownership and regulations of the areas they intend to hunt.



DM668
DM669
DM670

AREA DESCRIPTION: Unit 20A, bounded on the north by the north bank of the Tanana River between Delta Creek, Little Delta River, and a line from the mouth of the Little Delta River (N 64° 17.033', W 146° 42.383') to the intersection of the Rex Trail and Wood River's east bank (N 64° 14.00', W 147° 41.75'), on the west by the eastern boundary of the Wood River CUA, on the south by a line at N 64° 05.00' and on the east by the west bank of Delta Creek.



Please refer to the Alaska Hunting Regulations booklet for bag type, seasons, and additional regulations concerning this hunt.