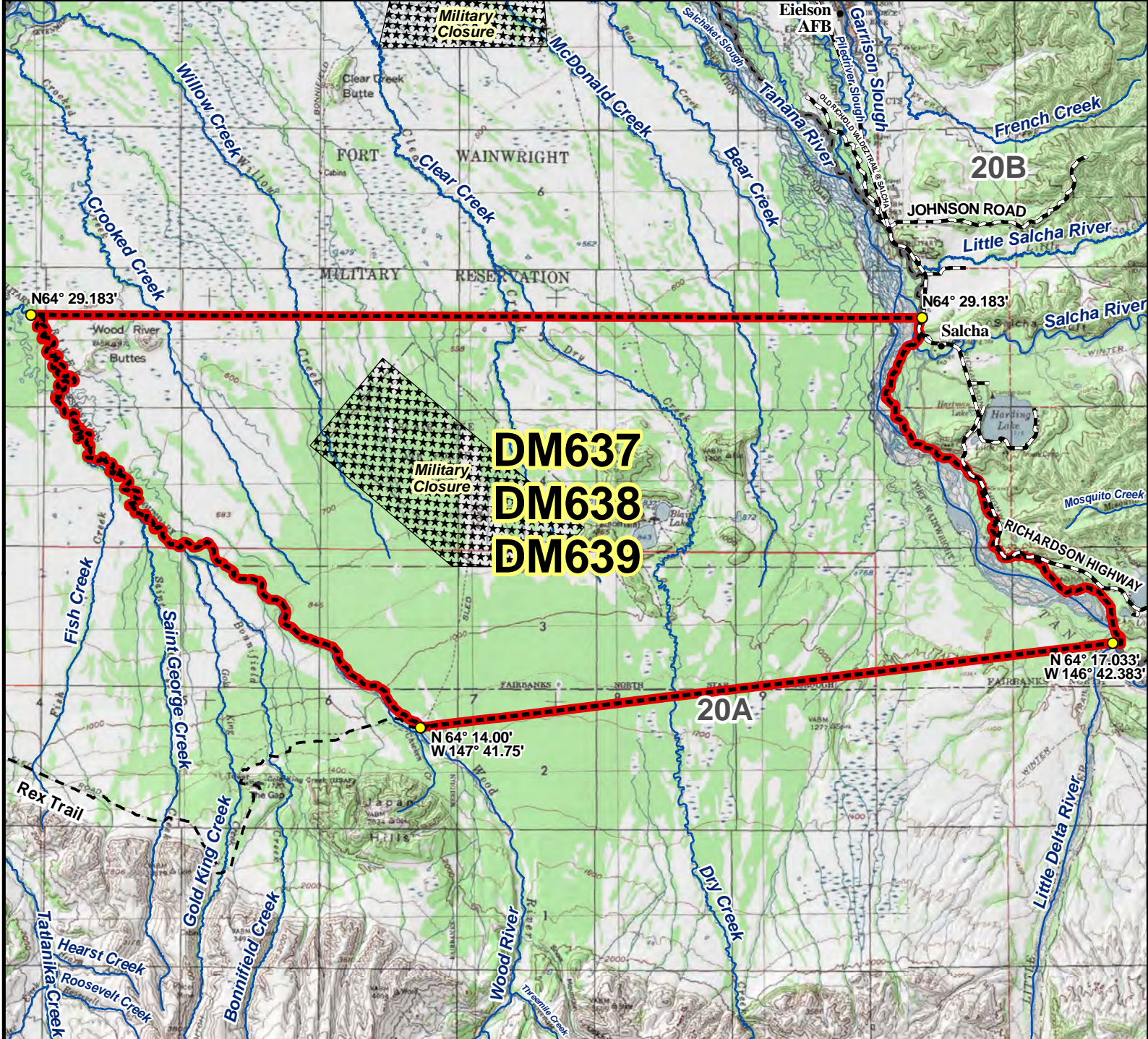


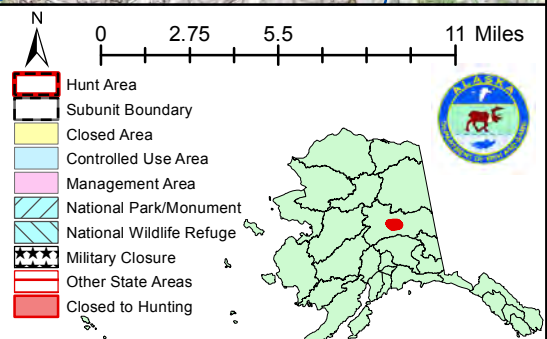
DM637 DM638 DM639 Moose Drawing Permit Hunt

This map is intended for hunt planning use, not for determining legal property or regulatory boundaries. Content is compiled from various sources and is subject to change without notice. See current hunting regulations for written descriptions of boundaries. Hunters are responsible for knowing the land ownership and regulations of the areas they intend to hunt.



DM637
DM638
DM639

AREA DESCRIPTION: Unit 20A, bounded on the north by a line at N 64° 29.183', on the west by the east bank of the Wood River, on the east by the north bank of the Tanana River, on the south by a line beginning at the mouth of the Little Delta River (N 64° 17.033', W 146° 42.383'), to the intersection of the Wood River's east bank and the Rex Trail (N 64° 14.00', W 147° 41.75').



Please refer to the Alaska Hunting Regulations broklet for bag type, seasons, and additional regulations concerning this hunt.