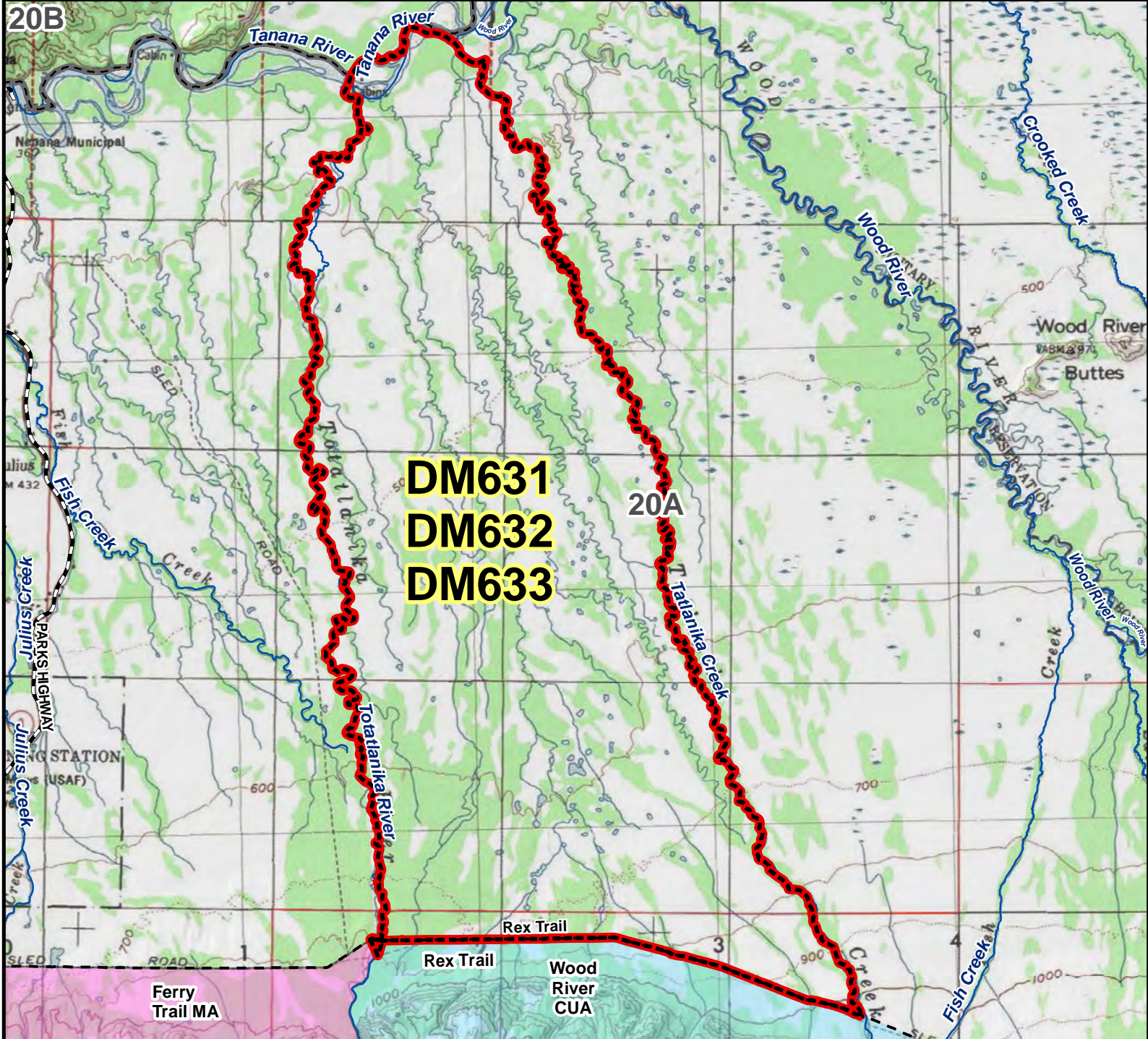


DM631 DM632 DM633 Moose Drawing Permit Hunt

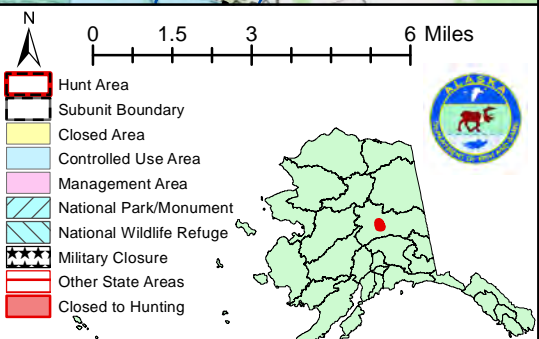
This map is intended for hunt planning use, not for determining legal property or regulatory boundaries. Content is compiled from various sources and is subject to change without notice. See current hunting regulations for written descriptions of boundaries. Hunters are responsible for knowing the land ownership and regulations of the areas they intend to hunt.



DM631
DM632
DM633

20A

AREA DESCRIPTION: Unit 20A, that portion bounded on the south by the south side of the Rex Trail, on the west by Totatlanika River, on the north by the north bank of the Tanana River, and east by the Tatlanika Creek.



Please refer to the Alaska Hunting Regulations booklet for bag type, seasons, and additional regulations concerning this hunt.