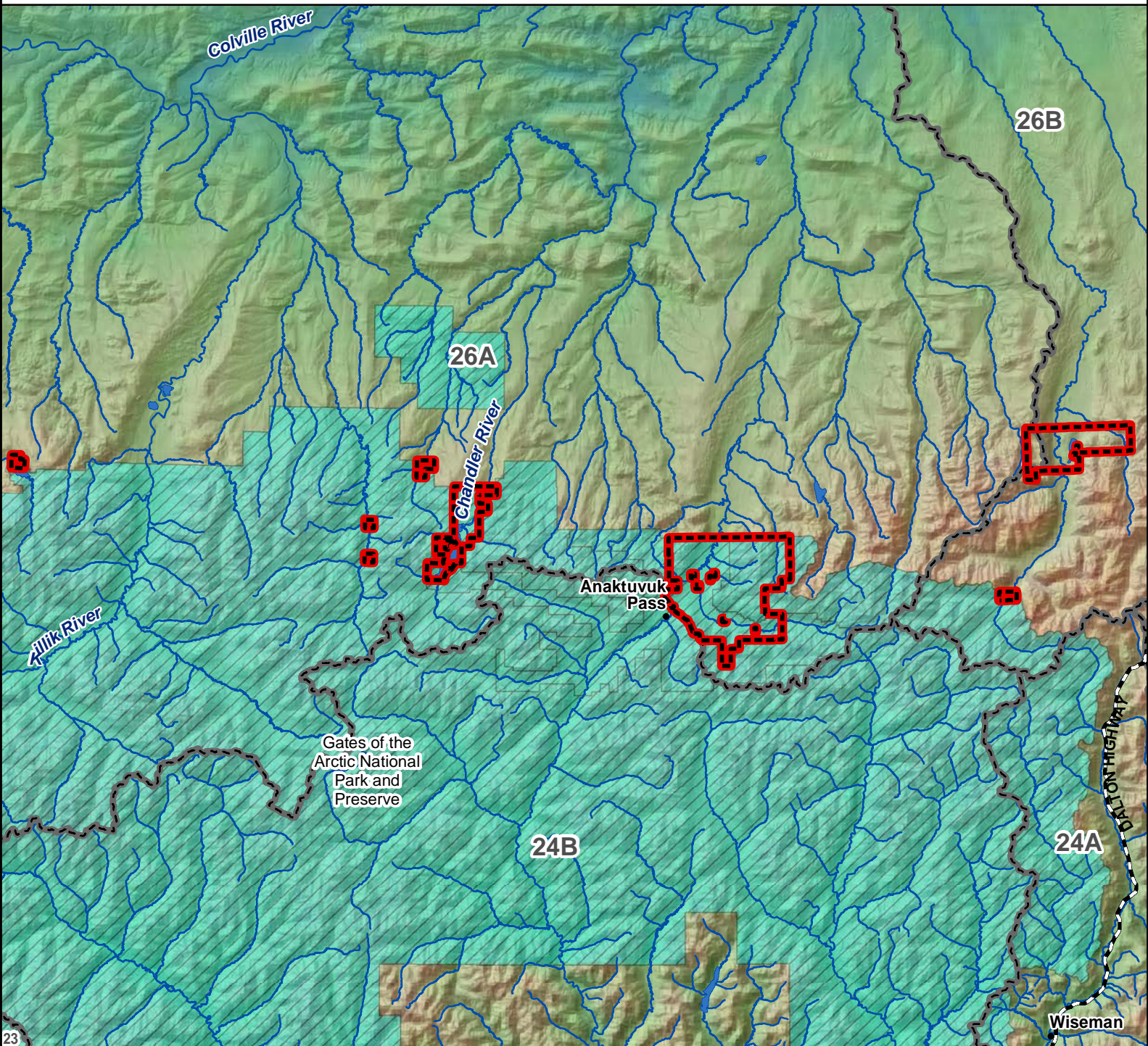


# Units 26A and 26B, GAAR NP Private Lands Sheep - General Hunt

Residents - **Harvest Ticket Required** Nonresidents - **No Open Season**



**AREA DESCRIPTION:** Units 26A and 26B, private lands within the Gates of the Arctic National Park.

N

0 5 10 20 Miles

- Hunt Area
- Subunit Boundary
- Closed Area
- Controlled Use Area
- Management Area
- National Park/Monument
- National Wildlife Refuge
- Military Closure
- Other State Areas
- Closed to Hunting

Please refer to the Alaska Hunting Regulations booklet for bag type, seasons, and additional regulations concerning this hunt.