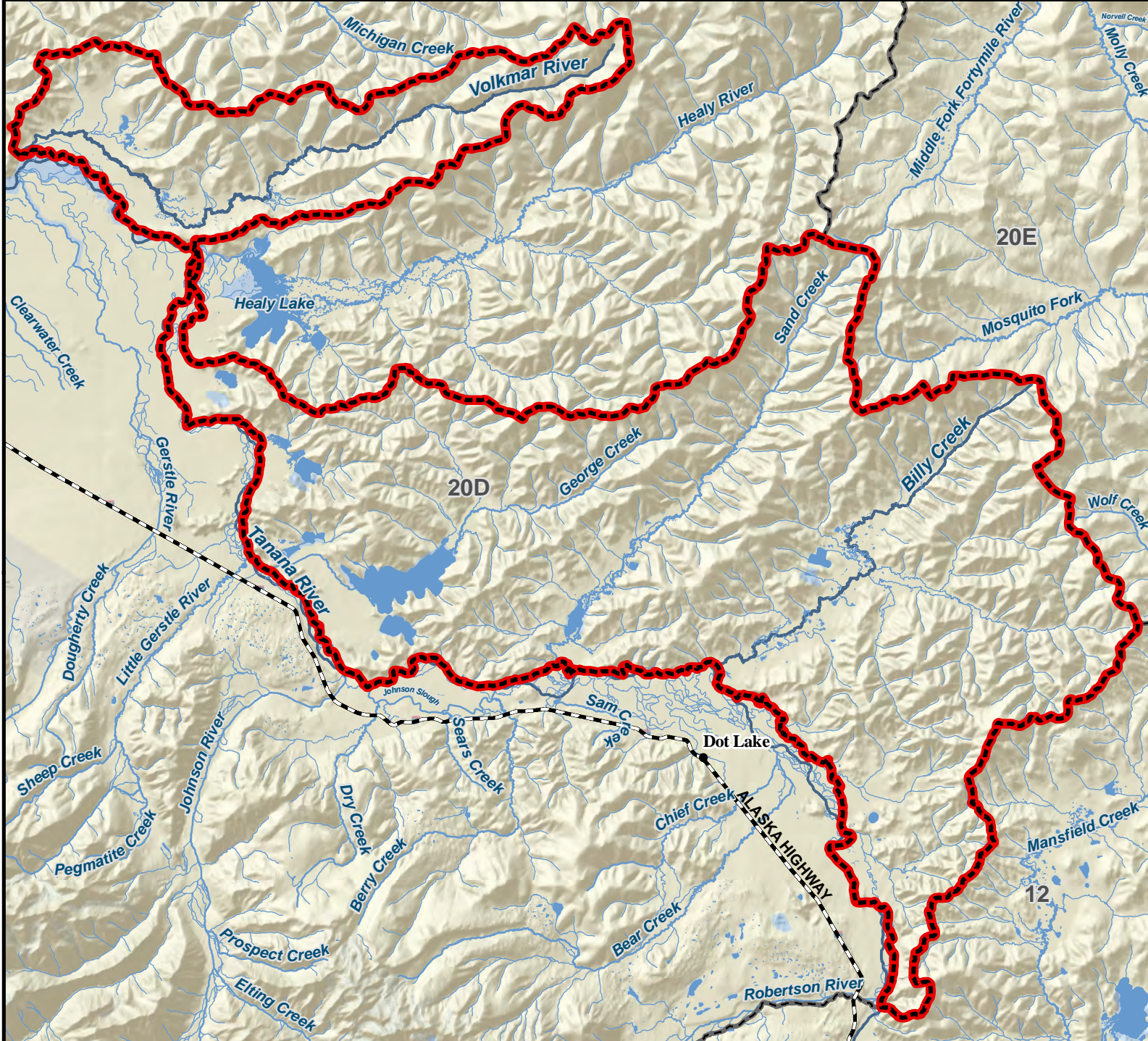


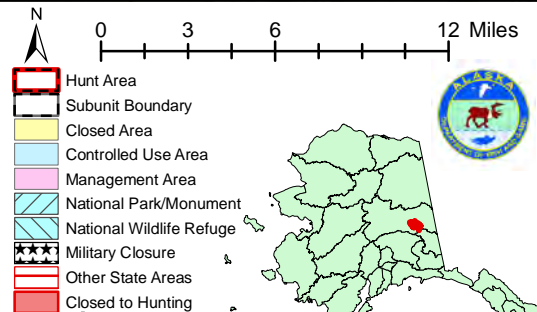
Unit 20D, North Tanana Moose - General Hunt

Residents and Nonresidents - Harvest Ticket Required

This map is intended for hunt planning use, not for determining legal property or regulatory boundaries. Content is compiled from various sources and is subject to change without notice. See current hunting regulations for written descriptions of boundaries. Hunters are responsible for knowing the land ownership and regulations of the areas they intend to hunt.



AREA DESCRIPTION: Unit 20D, north of the north bank of the Tanana River including the Volkmar River drainage, east to include the Billy Creek drainage, excluding the Healy Lake drainage



Please refer to the Alaska Hunting Regulations booklet for bag type, seasons, and additional regulations concerning this hunt.