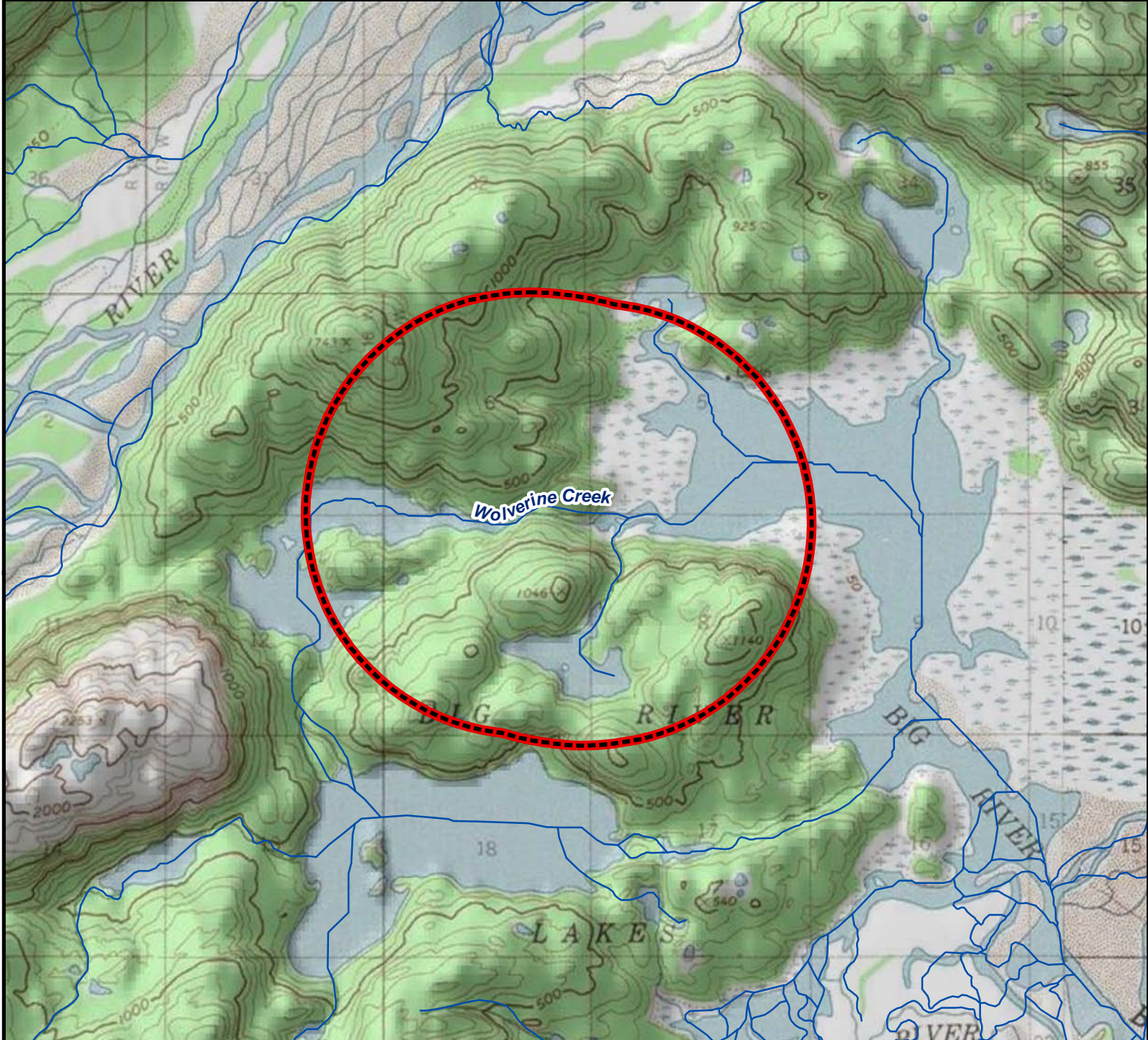
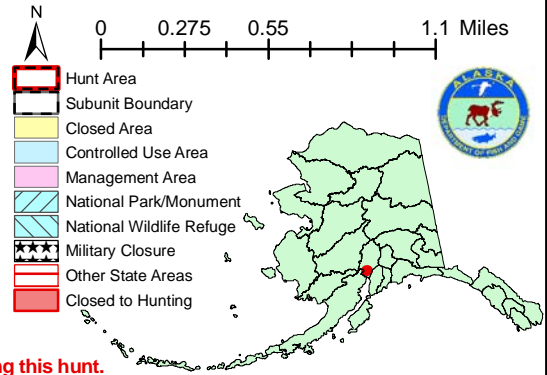


Unit 16B, Wolverine Creek Brown Bear - General Hunt

Residents and Nonresidents



AREA DESCRIPTION: Unit 16B, within one mile of the mouth of Wolverine Creek (60.84° N. lat., 152.31° W long.).



Please refer to the Alaska Hunting Regulations booklet for bag type, seasons, and additional regulations concerning this hunt.