

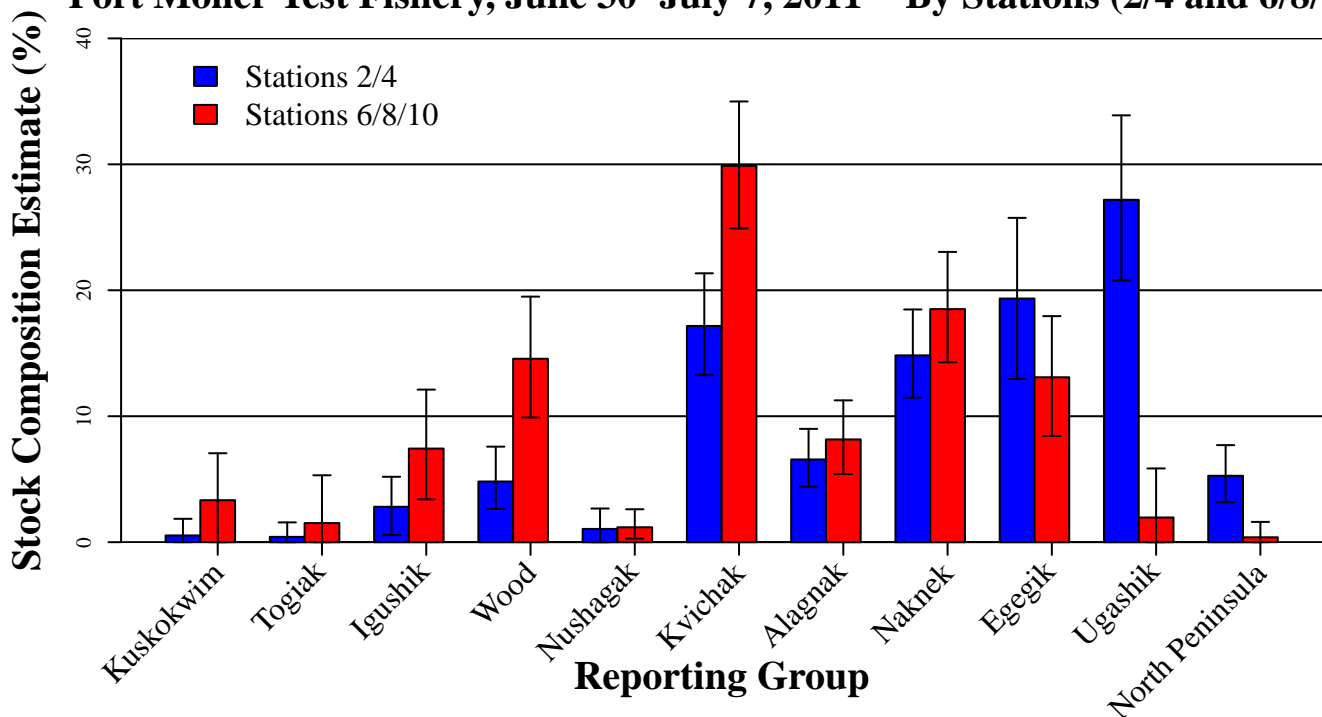
Bristol Bay Sockeye Salmon Fishery

Port Moller Sockeye Salmon Stock Composition Summary June 30–July 7, 2011 – By Stations (2/4 and 6/8/10)

Genetic stock composition estimates by stations (2/4 and 6/8/10) for sockeye salmon from the Port Moller Test Fishery for June 30–July 7, 2011. A total of 545 and 416 fish were sampled and 444 and 312 fish were analyzed from stations 2/4 and 6/8/10, respectively (439 and 303 had adequate data to include in the analysis).

Reporting Group	Stations 2/4			Stations 6/8/10		
	Stock Composition Estimate	90% Confidence Intervals		Stock Composition Estimate	90% Confidence Intervals	
		Lower	Upper		Lower	Upper
Kuskokwim Bay	0.5%	0.0%	1.9%	3.3%	0.0%	7.1%
Togiak River	0.4%	0.0%	1.6%	1.5%	0.0%	5.3%
Igushik River	2.8%	0.6%	5.2%	7.4%	3.4%	12.1%
Wood River	4.8%	2.6%	7.6%	14.6%	9.9%	19.5%
Nushagak River	1.1%	0.0%	2.7%	1.2%	0.3%	2.6%
Kvichak River	17.2%	13.3%	21.3%	29.9%	24.9%	35.0%
Alagnak River	6.6%	4.4%	9.0%	8.2%	5.4%	11.3%
Naknek River	14.8%	11.5%	18.5%	18.5%	14.3%	23.0%
Egegik River	19.3%	13.0%	25.7%	13.1%	8.4%	17.9%
Ugashik River	27.2%	20.8%	33.9%	2.0%	0.0%	5.9%
North Peninsula	5.3%	3.2%	7.7%	0.4%	0.0%	1.6%

Genetic Stock Composition Estimates for Sockeye Salmon Captured in the Port Moller Test Fishery, June 30–July 7, 2011 – By Stations (2/4 and 6/8/10)



The genetic analysis was completed by the Alaska Department of Fish and Game, Division of Commercial Fisheries, Gene Conservation Laboratory.