

2025 Southeast Alaska Red King Crab Stock Assessment & Commercial Fishery Overview

**King and Tanner Task Force Meeting
December 10, 2025**

**Tessa Bergmann, Fishery Biologist
Division of Commercial Fisheries, Southeast Region**



Red King Crab (RKC) Stock Assessment and Management

Stock Assessment

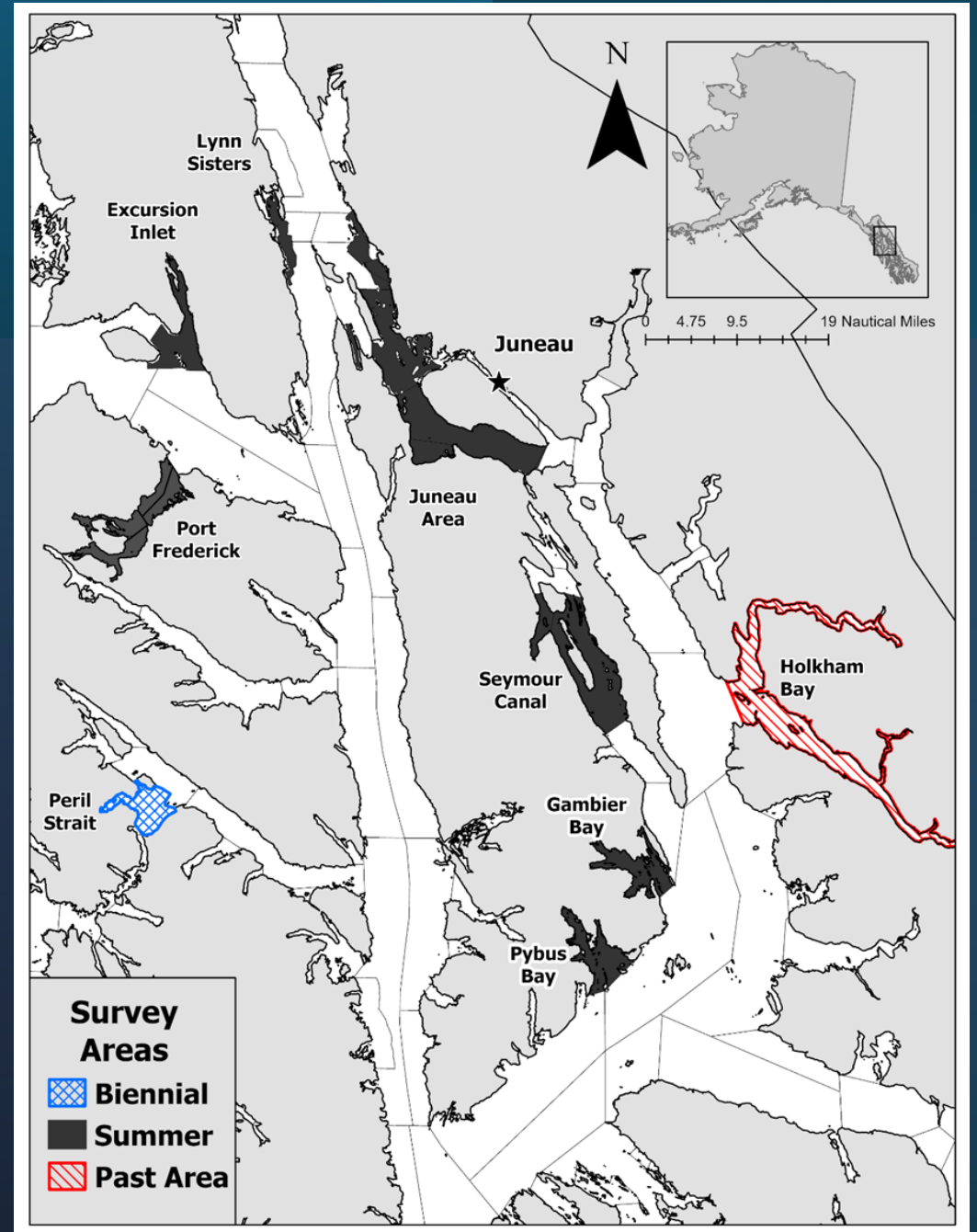
- 7 areas surveyed in 2025 with ~572 survey stations
- Peril Strait is surveyed every other year
- Port Frederick reintroduced to survey
- Biomass estimated using Catch-Survey Analysis (CSA) model



Management plan

- Commercial Fishery: November 1 – January 24
- Appropriate harvest rate
- Regional GHL set using survey biomass
- Pot limits based on guideline harvest level (GHL)
- Minimum GHL threshold of 200,000 lb legal crab or Individual Catch Limit (ICL)
- Mark/Recapture expansion factor used for biomass estimate
- Males only, 7-inch minimum CW

Southeast Alaska RKC Survey Areas



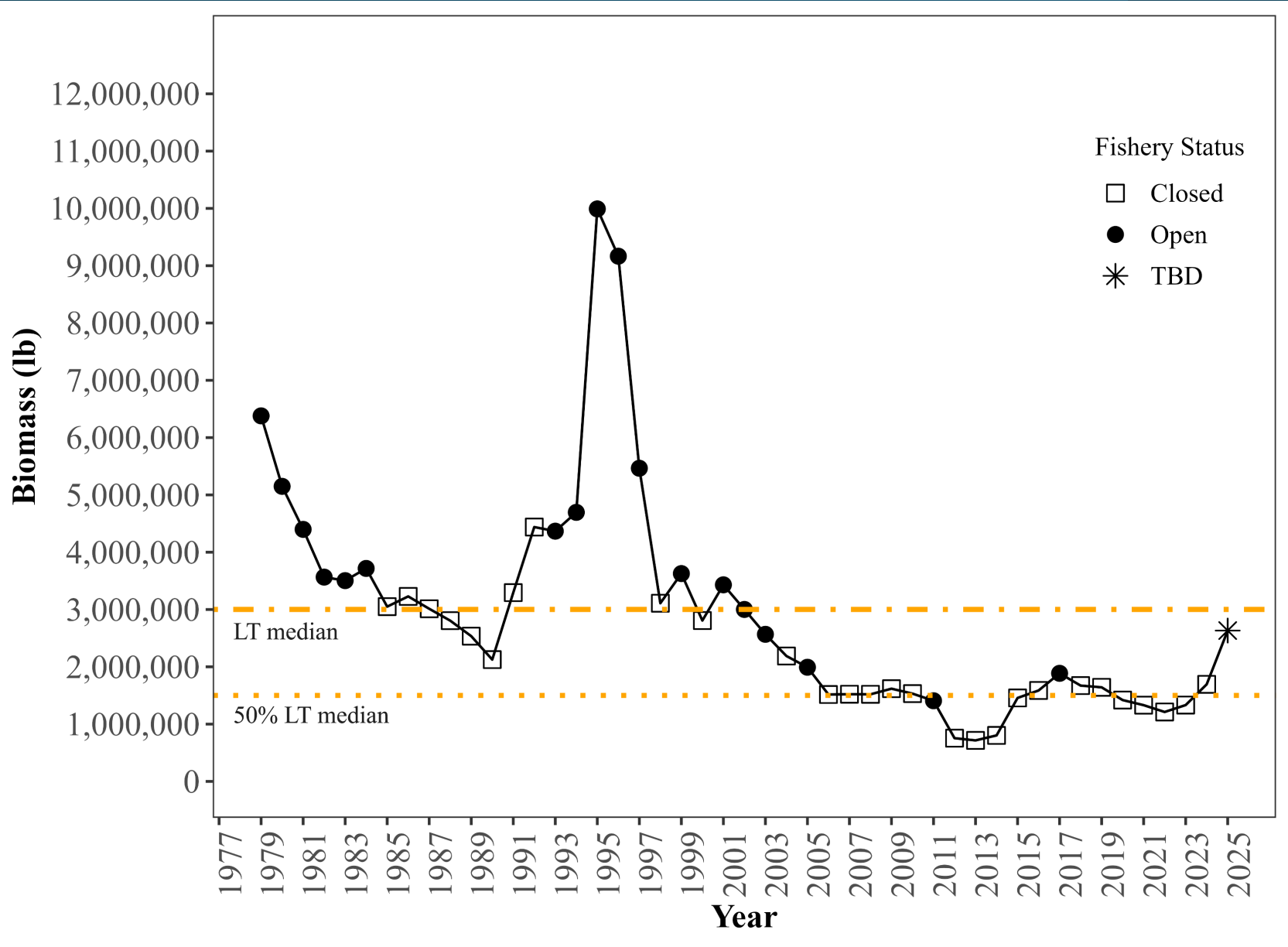
Stock Assessment Survey Highlights

2025: Juneau Area, Gambier Bay, Seymour Canal, and Lynn Sisters increased in both legal and mature biomass from the 2024 model estimates

2025: Regional legal and mature biomass increased by 55% and 42%, respectively

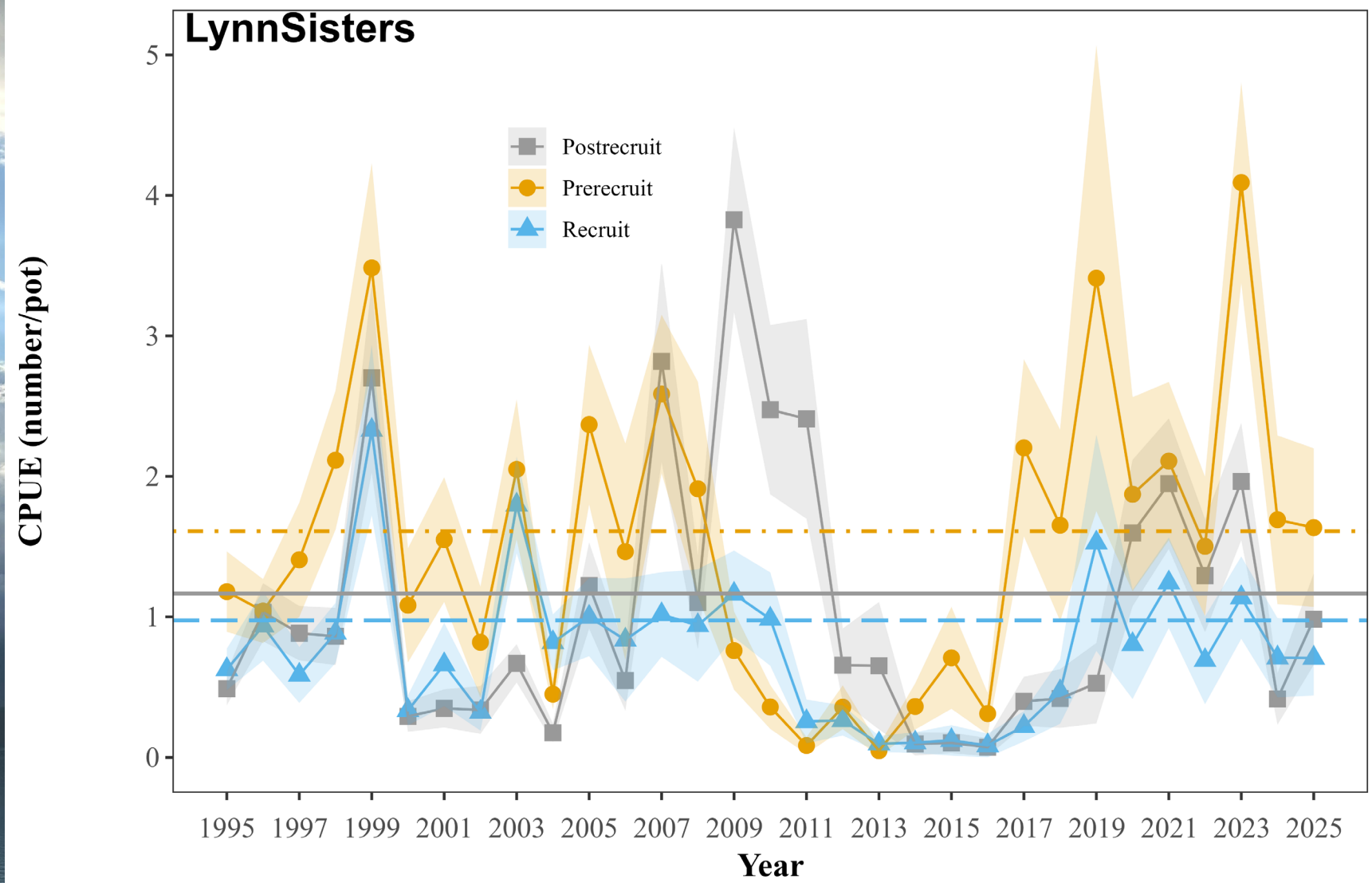
2025/26 Projected Estimates
Regional legal male biomass = 2.65 mil lb
Regional mature male biomass = 3.72 mil lb

2025 Expanded RKC Regionwide Biomass

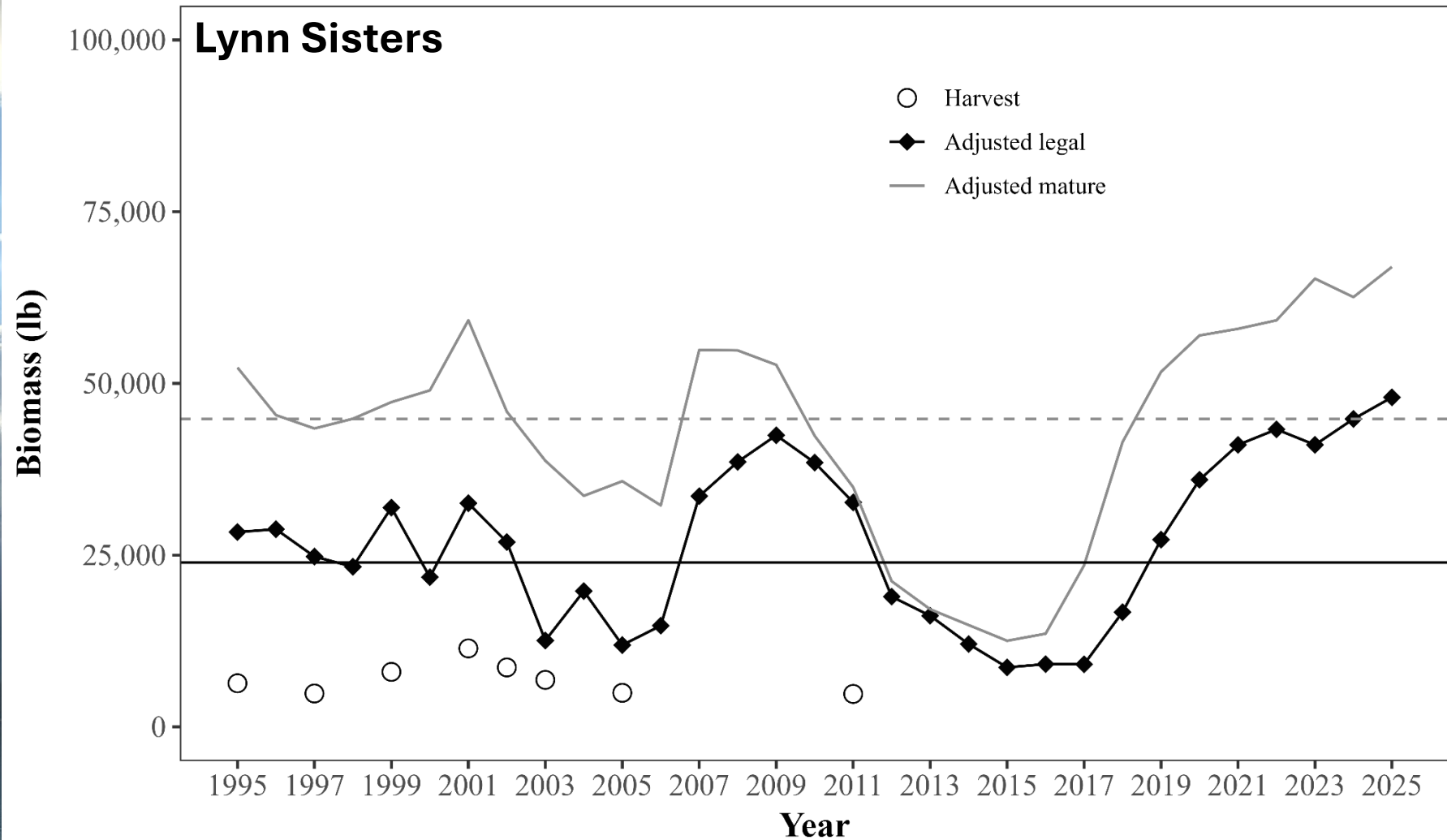


2025 Commercial RKC Fishery Guideline GHL Calculations

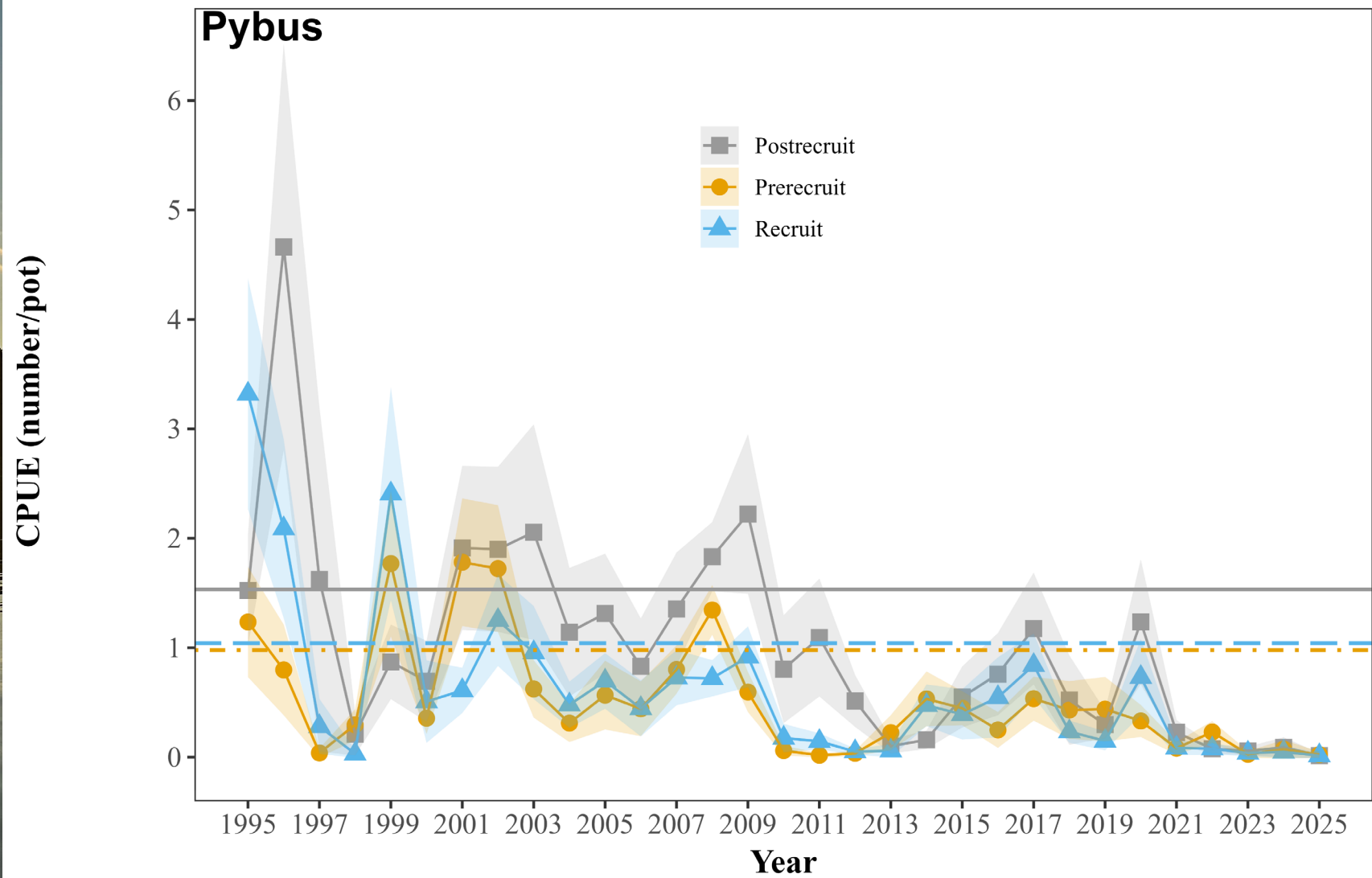
Survey area	Legal biomass (adj)	Mature biomass (adj)	Legal Harvest Rate	Total GHL (legal lb)	PU harvest (legal lb)	2025 Commercial GHL (legal lb)
Pybus Bay	30,589	32,538	0.00	0	0	0
Gambier Bay	124,344	249,622	0.08	9,948	0	9,948
Seymour Canal	638,637	823,693	0.07	44,705	0	44,705
Peril Strait	23,474	23,515	0.00	0	0	0
Juneau	511,158	743,688	0.10	51,116	30,670	20,446
Lynn Sisters	47,973	66,966	0.00	0	0	0
Excursion Inlet	13,780	14,194	0.00	0	0	0
BKC	14,734	20,715		796	0	796
Other areas	1,242,535	1,746,951	0.11	136,679	1,000	135,679
Total	2,647,223	3,721,881		243,243	31,670	211,573



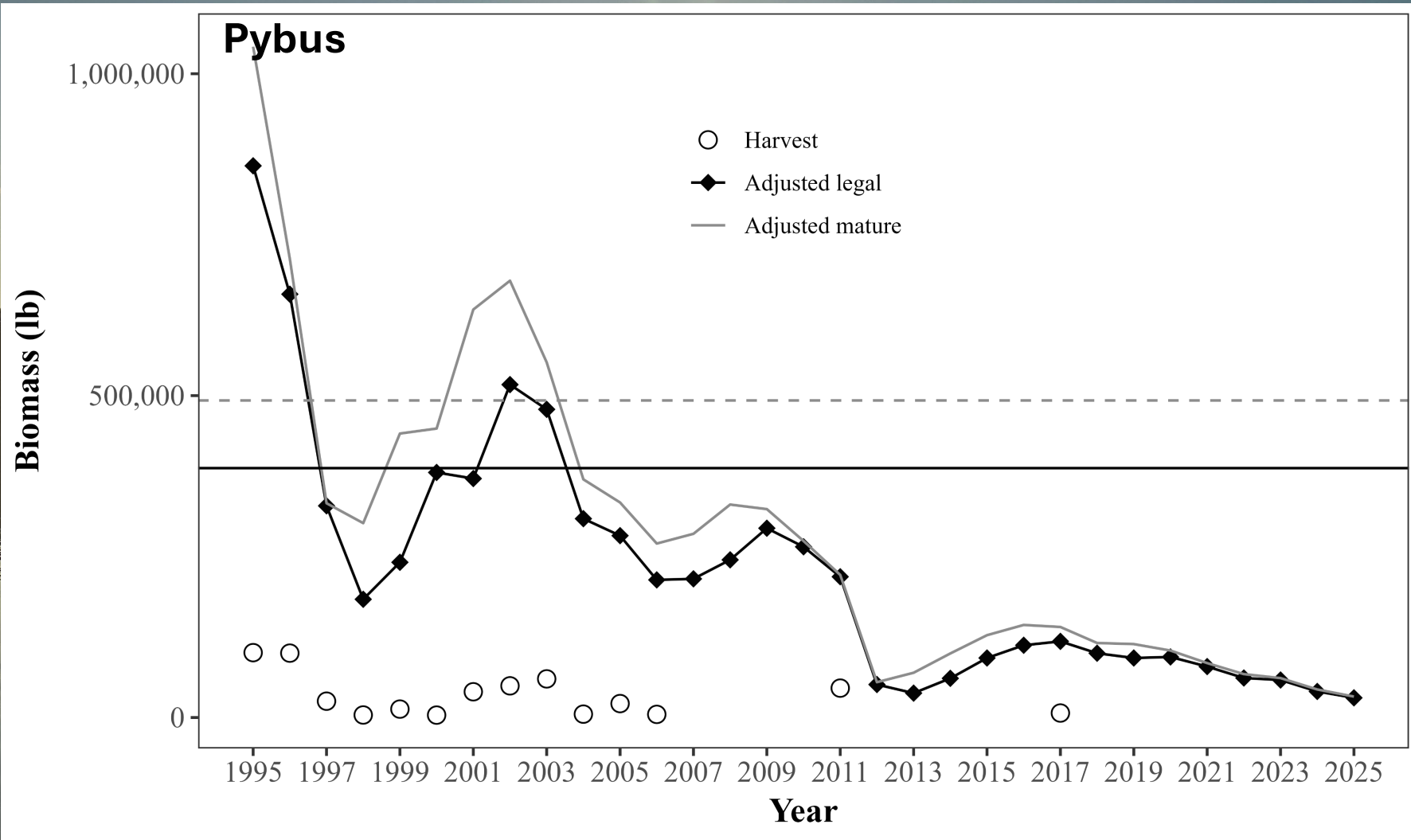
- Moderate stock health
- CPUEs for juvenile males and females were below their long-term averages



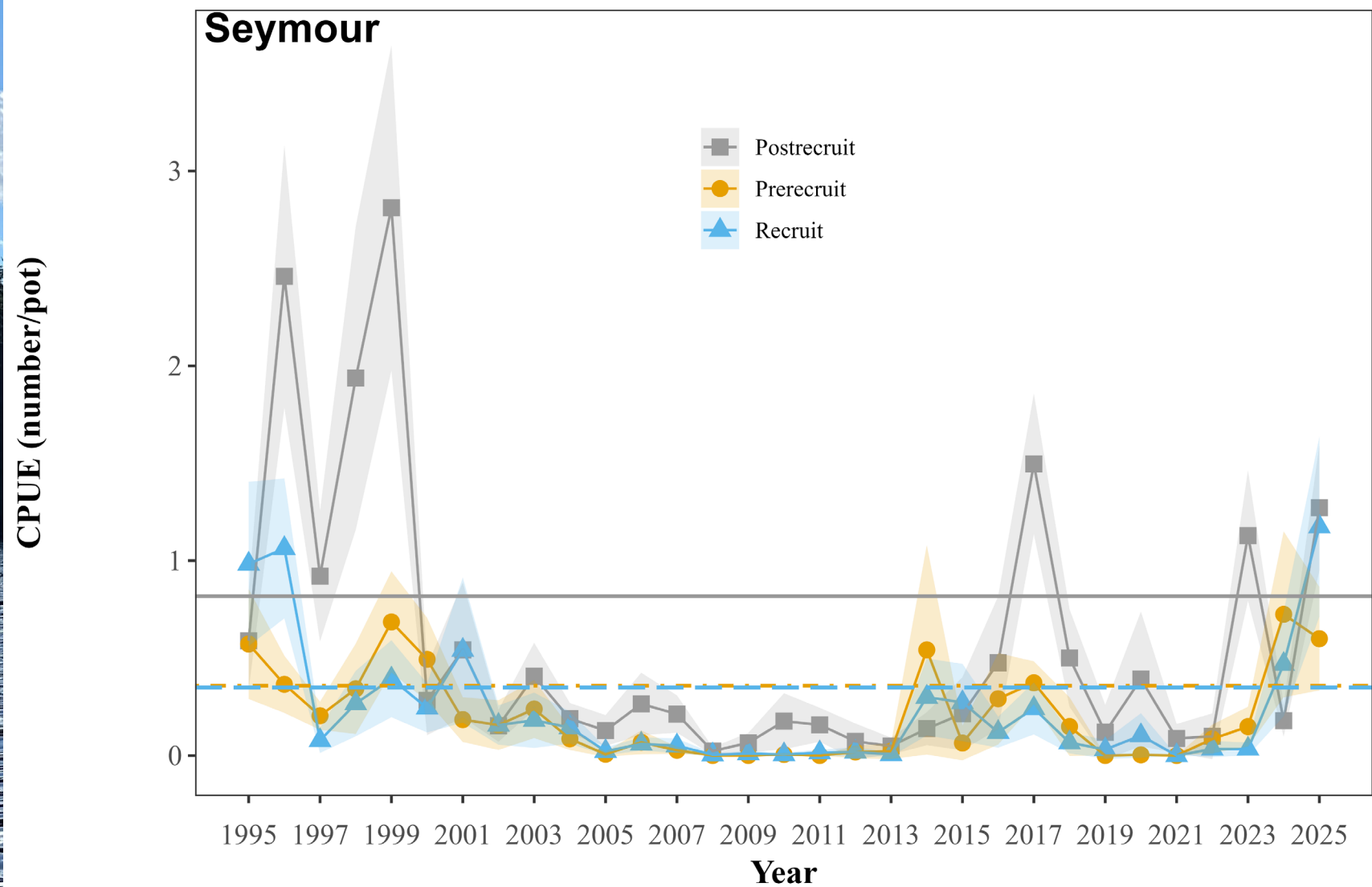
- Mature male biomass 49% above baseline
- Legal biomass 101% above baseline



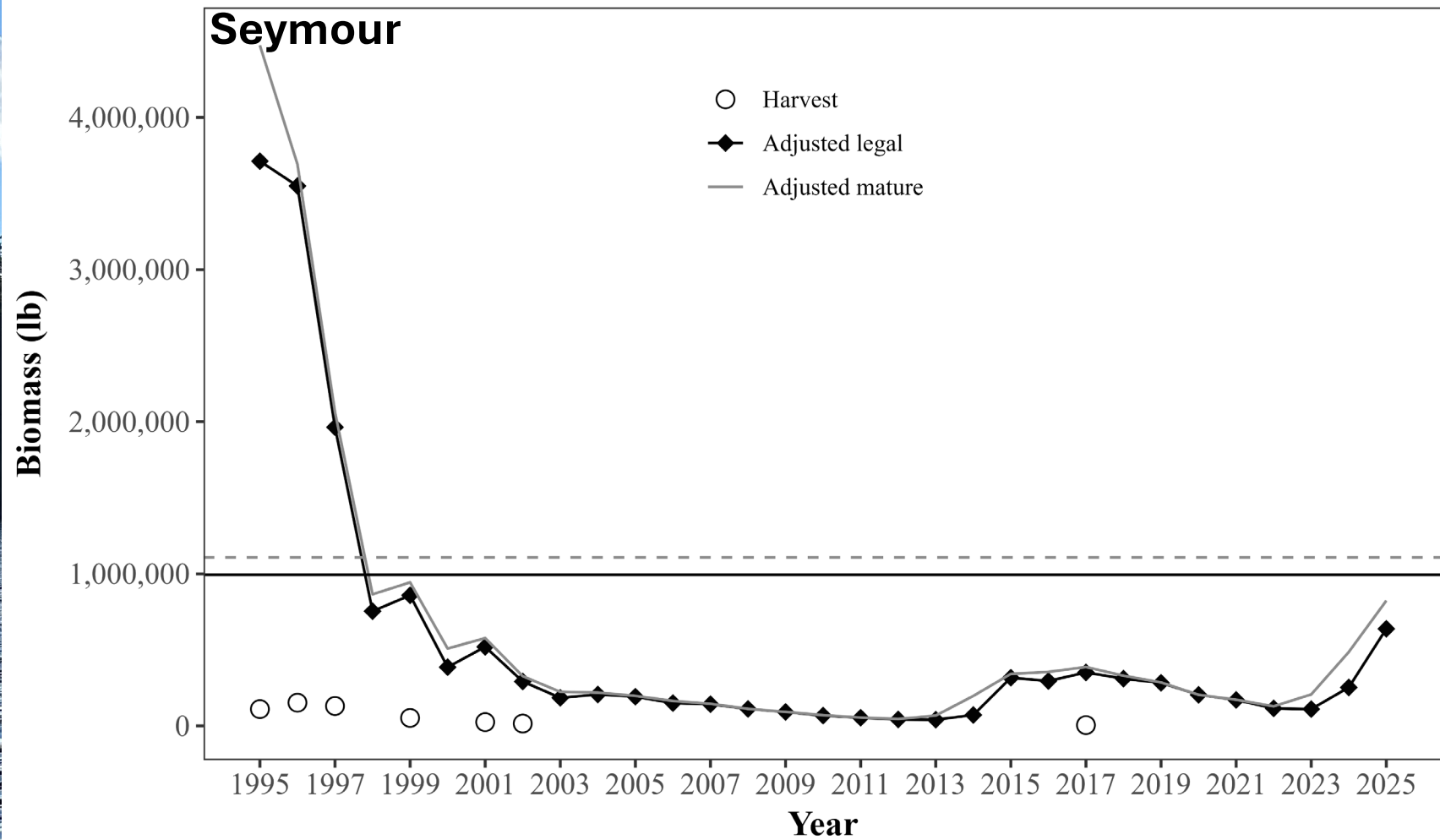
- Poor stock health
- All size & sex class CPUEs are below their long-term averages



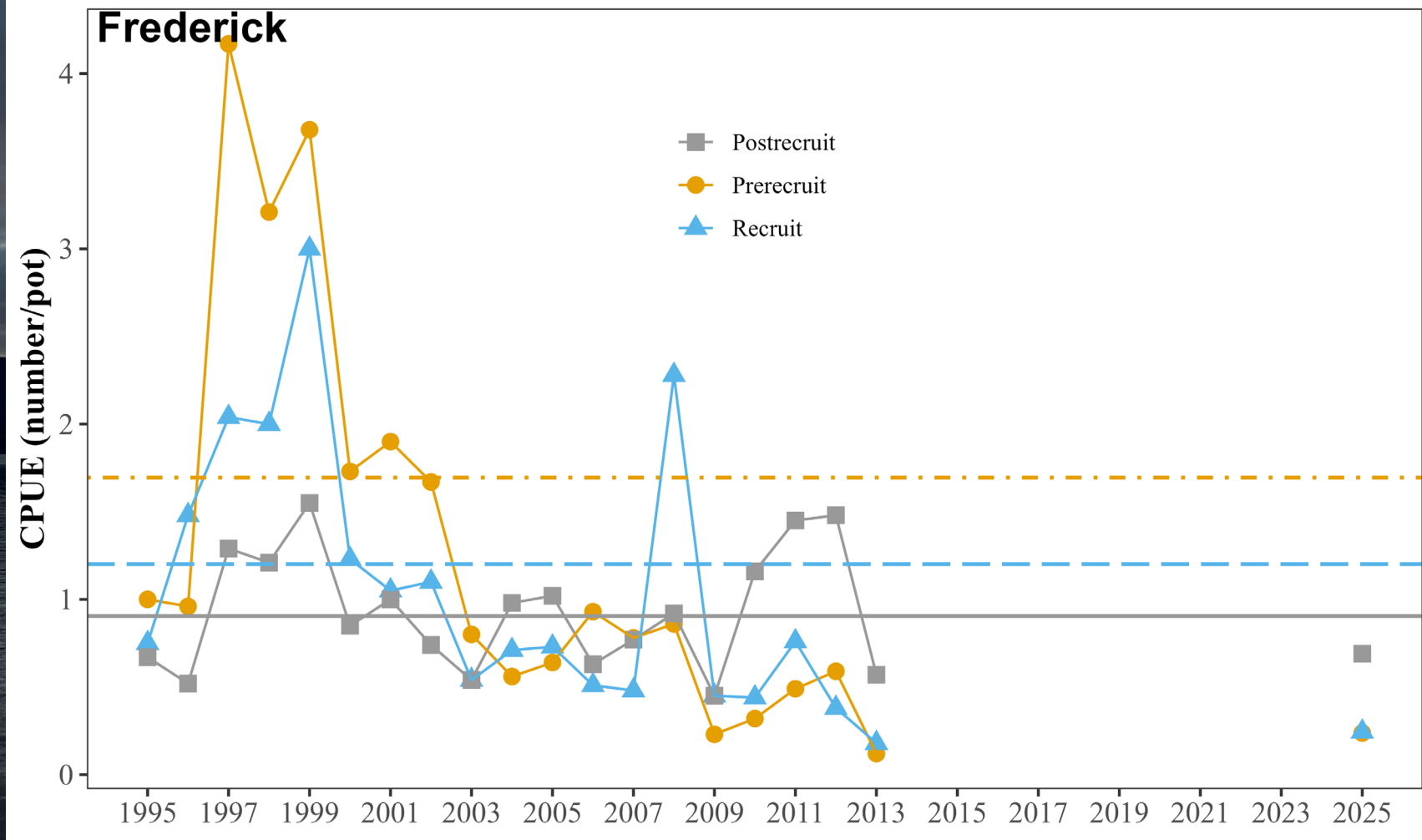
- Legal male biomass decreased 32%
- Mature male biomass decreased 36% from 2024 model estimate



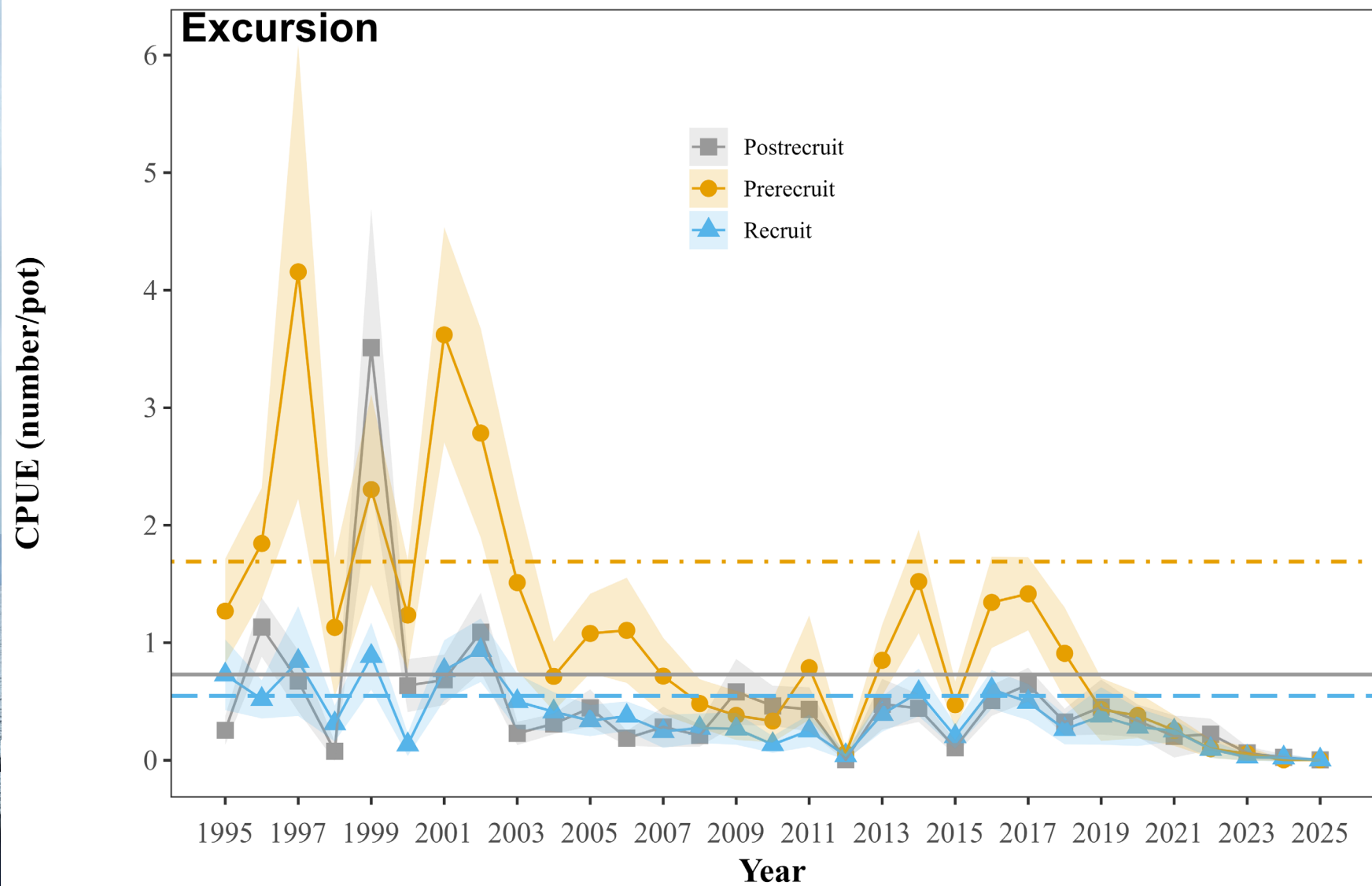
- Moderate stock health
- Recruit and post-recruit male CPUEs have significant short-term increasing trends



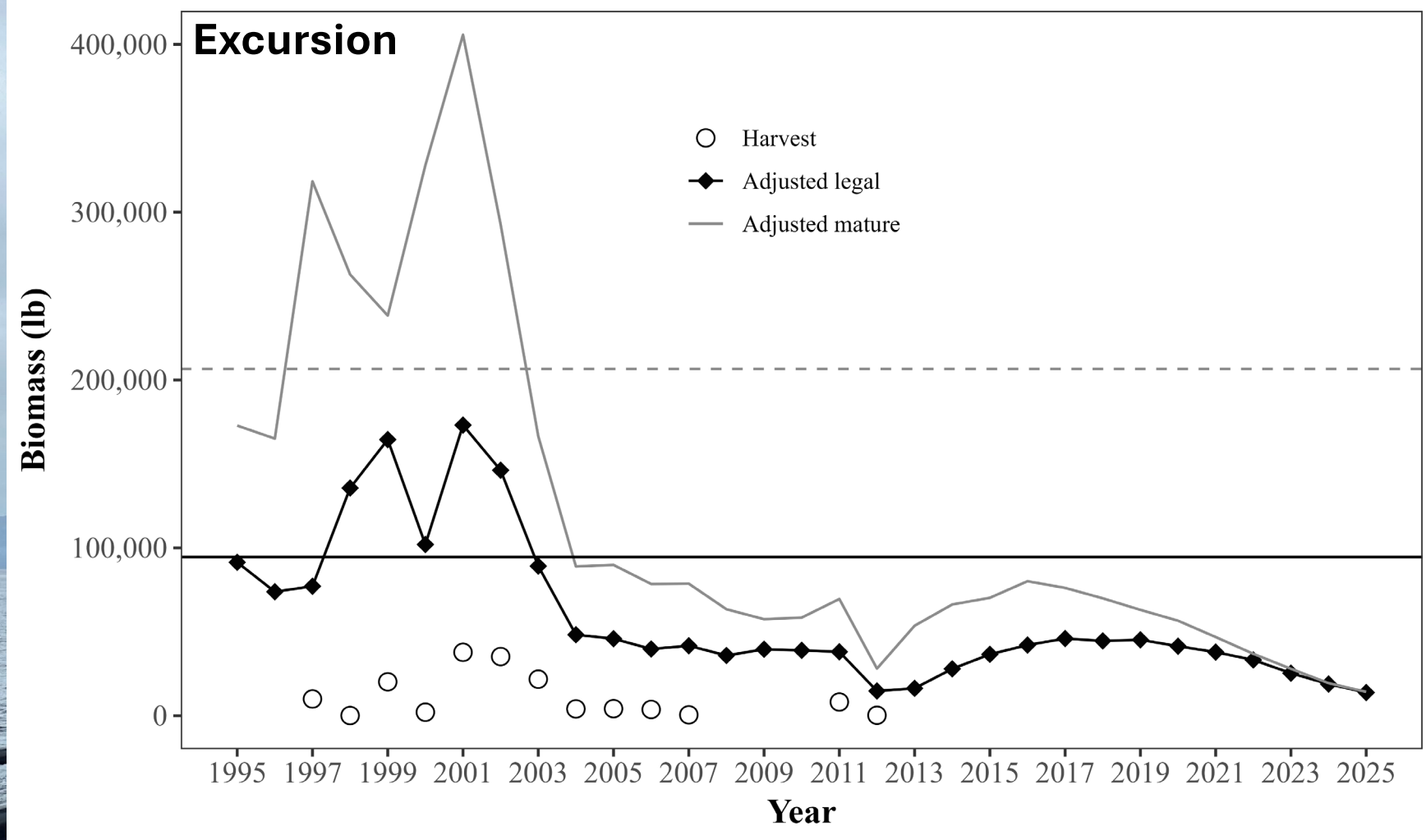
- Legal male biomass estimate increased 233%
- Mature male biomass increased 102% from the 2024 model estimate



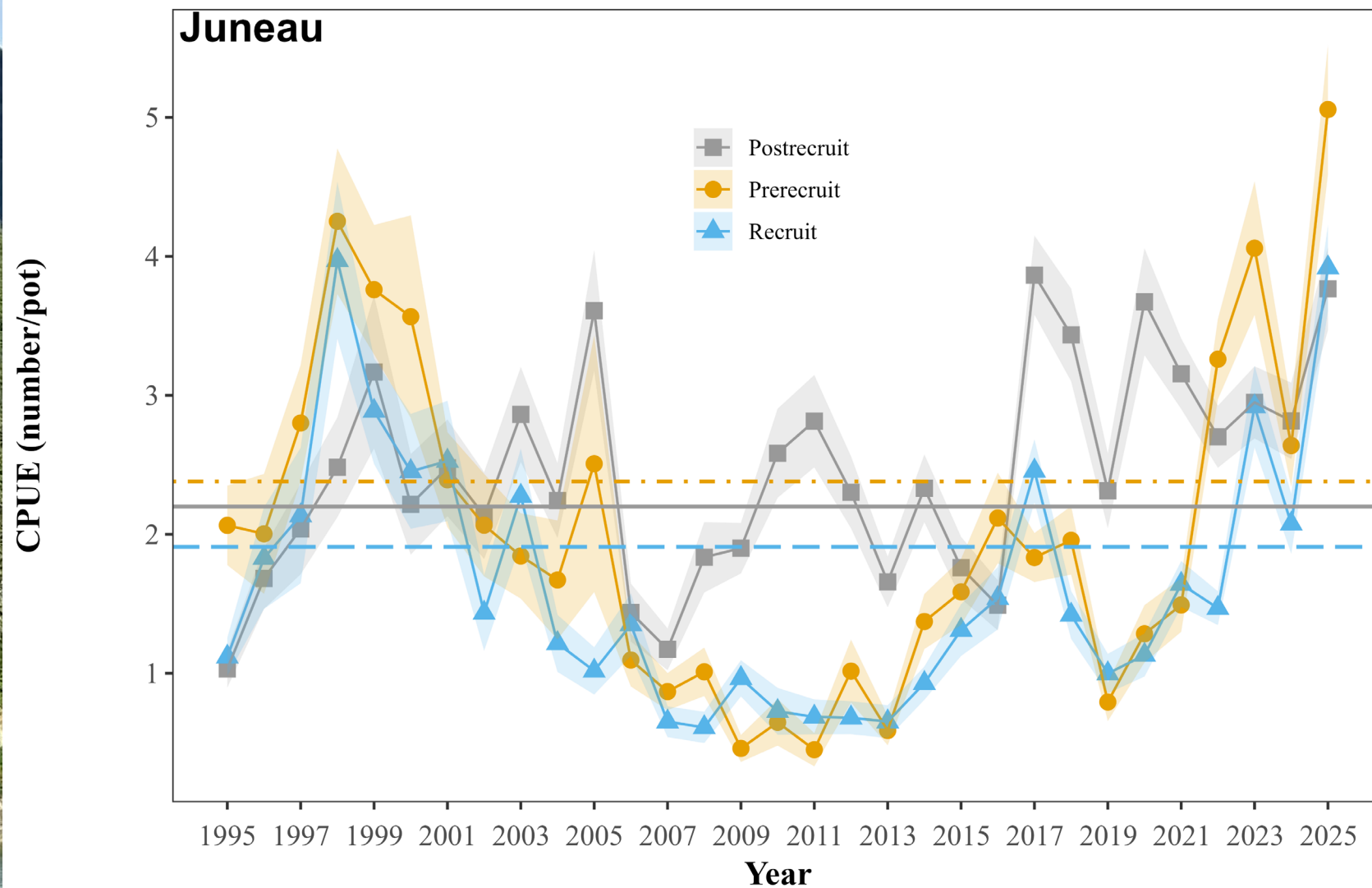
- Surveyed for the first time in more than 10 years
- Data will be reincorporated into stock assessment in the future



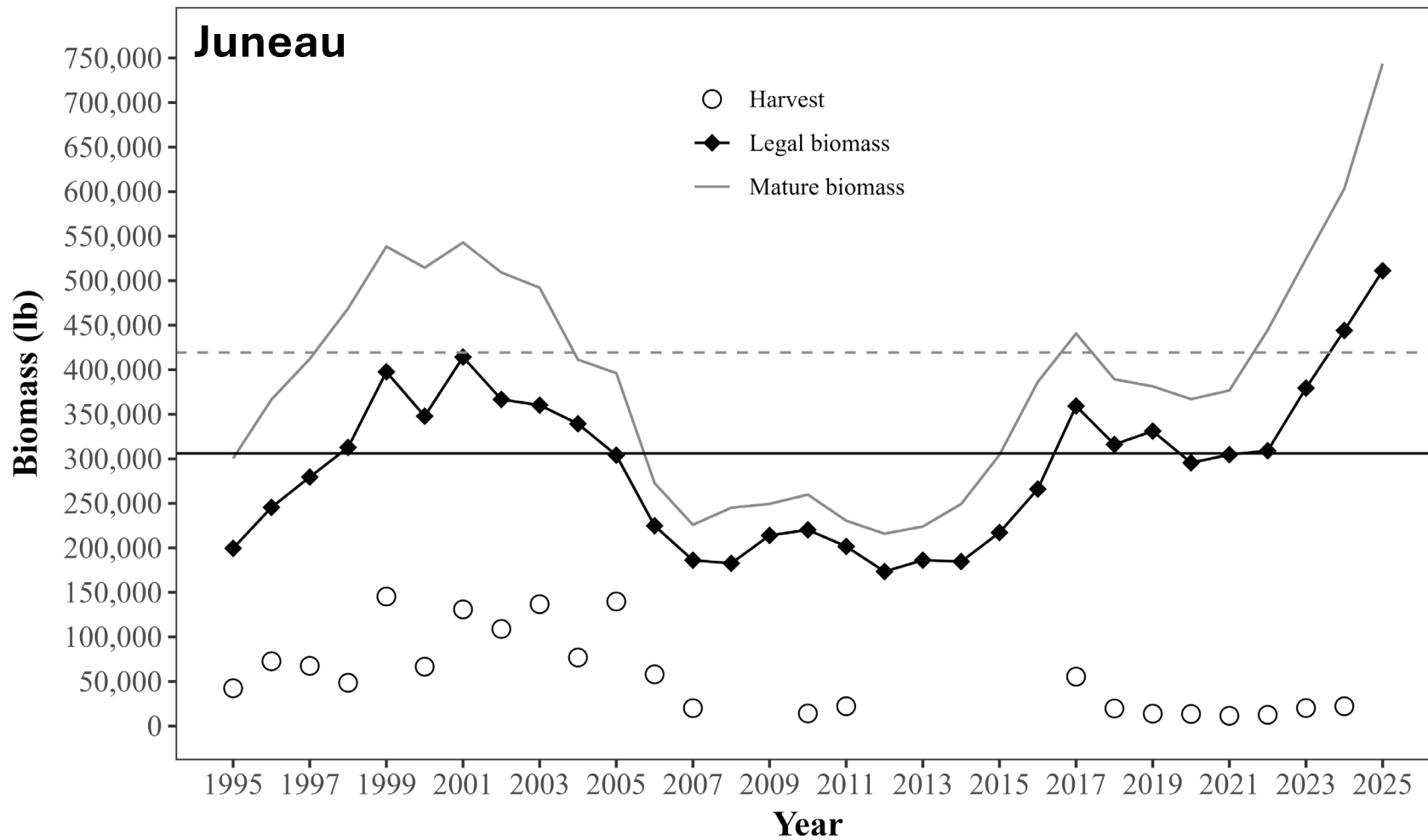
- Poor stock health
- All size/sex classes are significantly below long-term averages



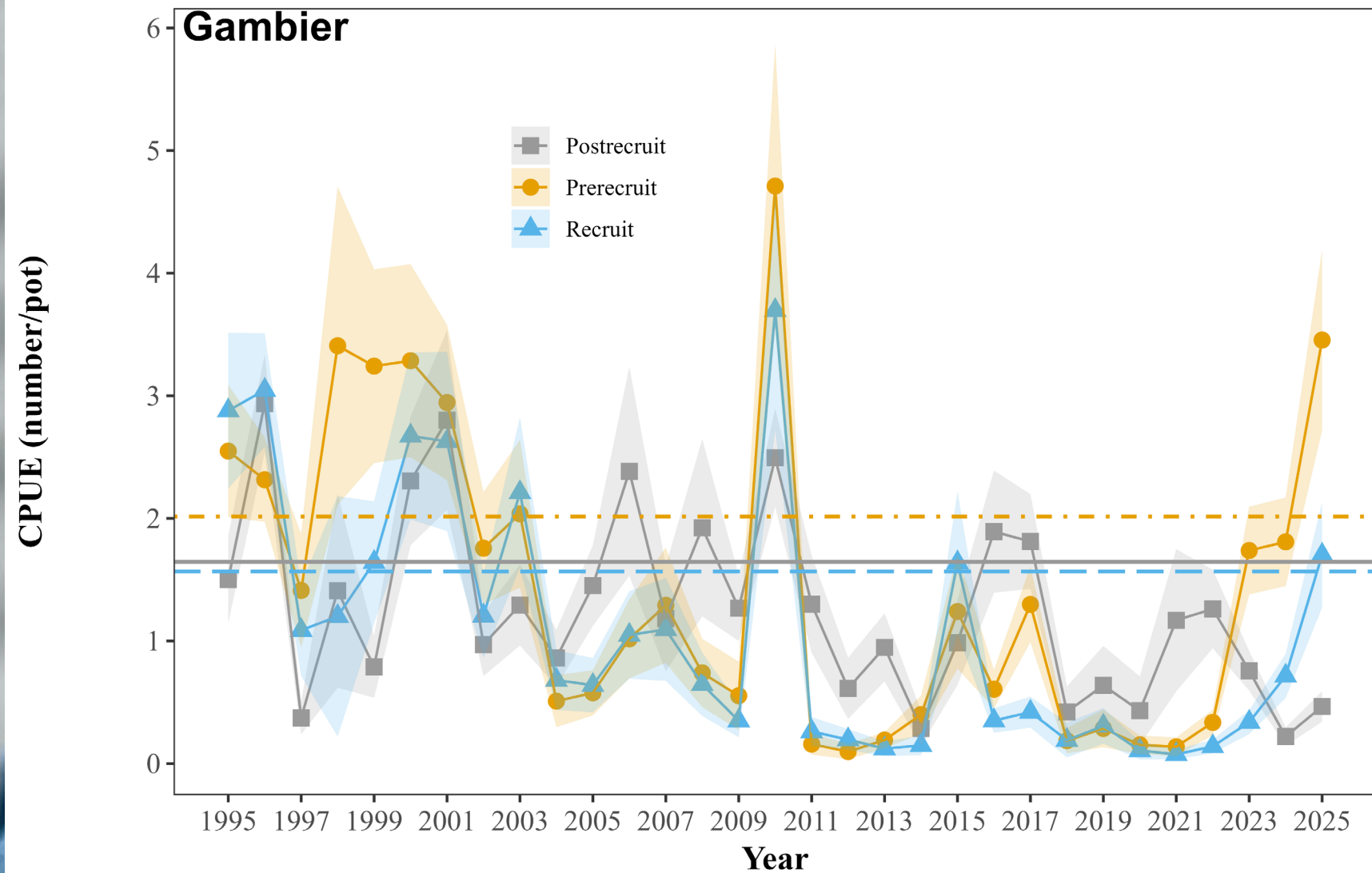
- Legal and mature biomass both decreased 35% from 2024
- Mature male biomass is 93% below baseline
- Legal biomass is 85% below baseline



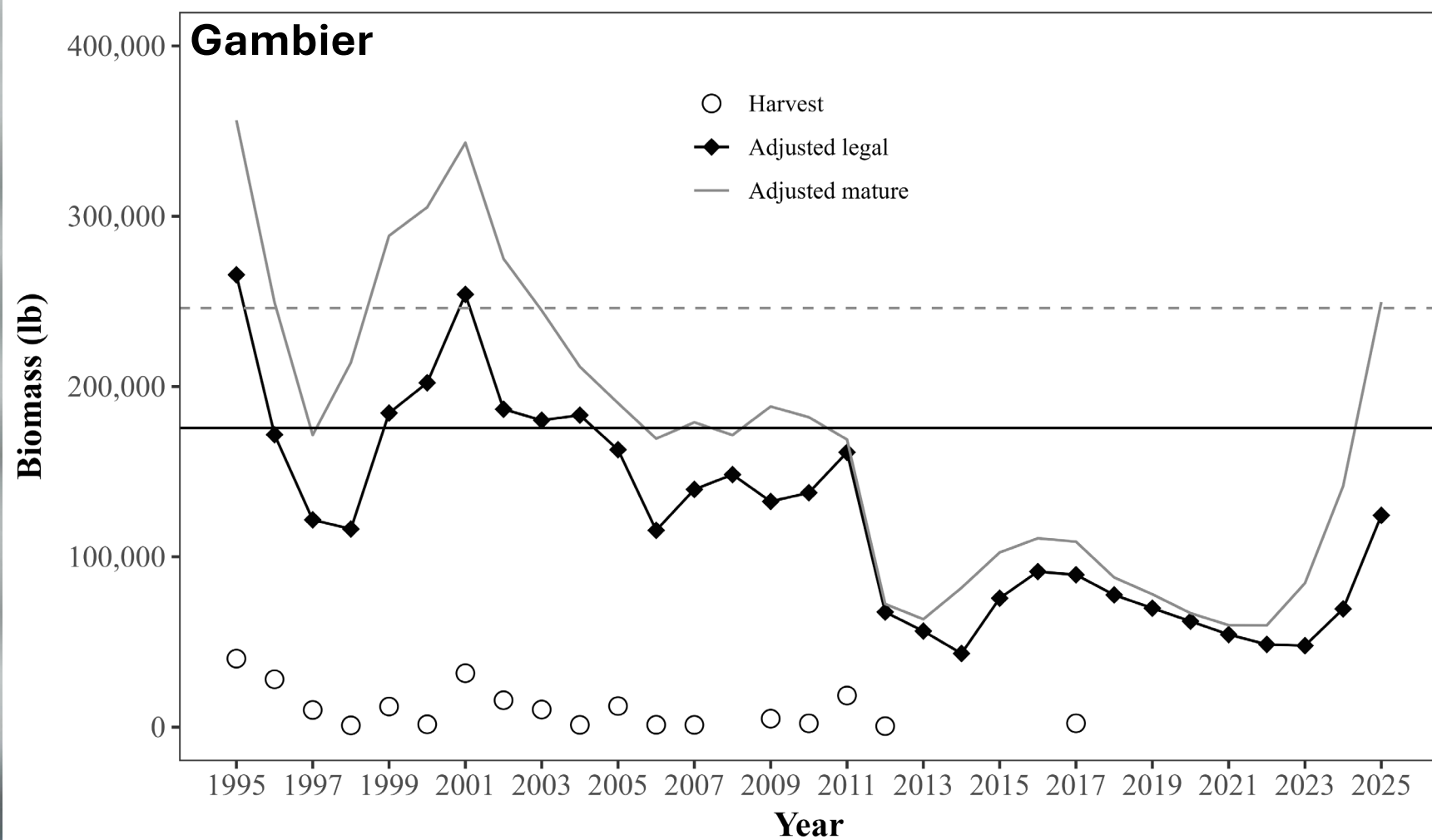
- Healthy stock status
- All recruit male CPUEs are above their long-term averages
- Significant short-term increasing trends in mature female, pre-recruit, recruit, and post-recruit male CPUEs



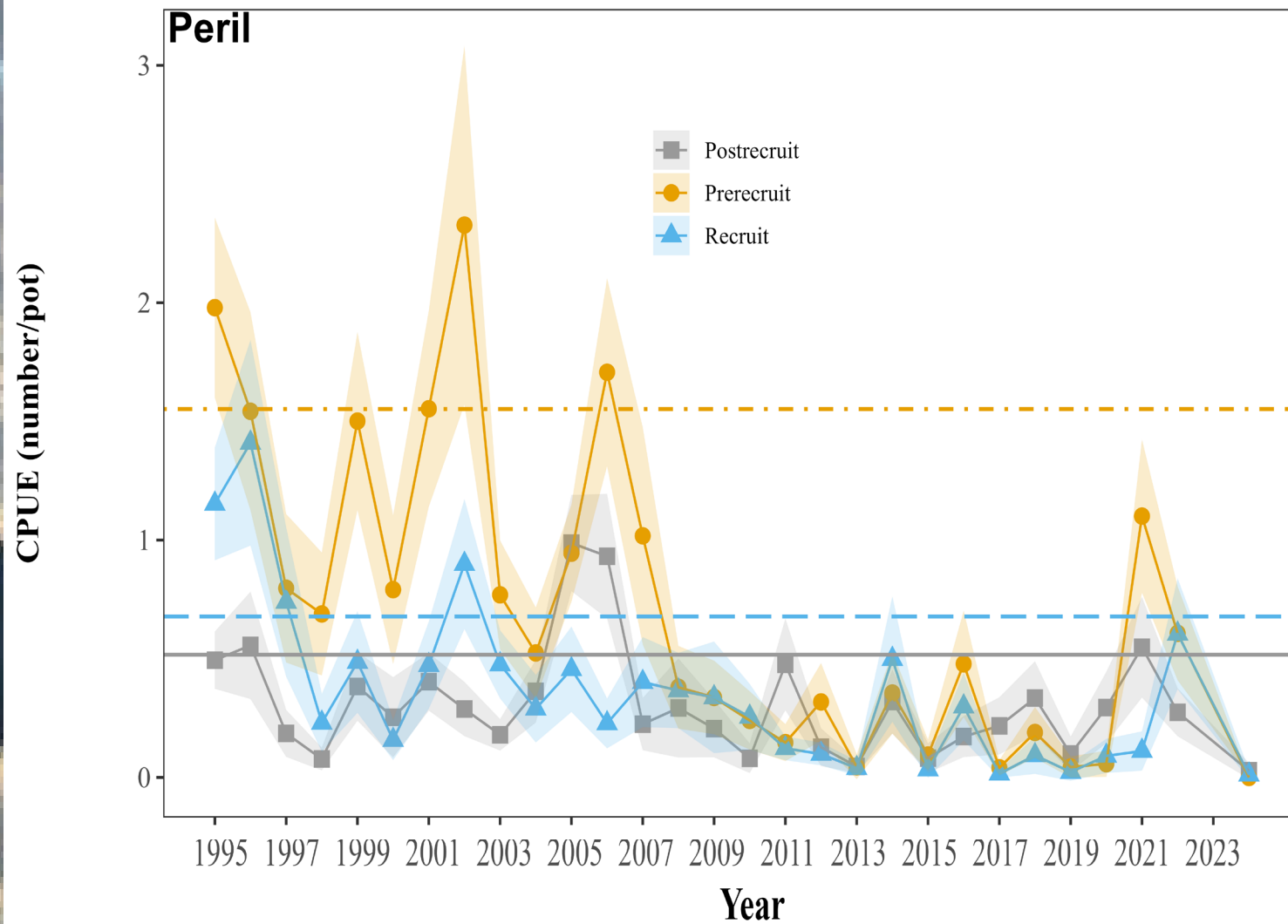
- Legal male biomass increased 12% and mature male biomass increased 28.6% from 2024
- Mature male biomass 77% above baseline
- Legal biomass 67% above baseline



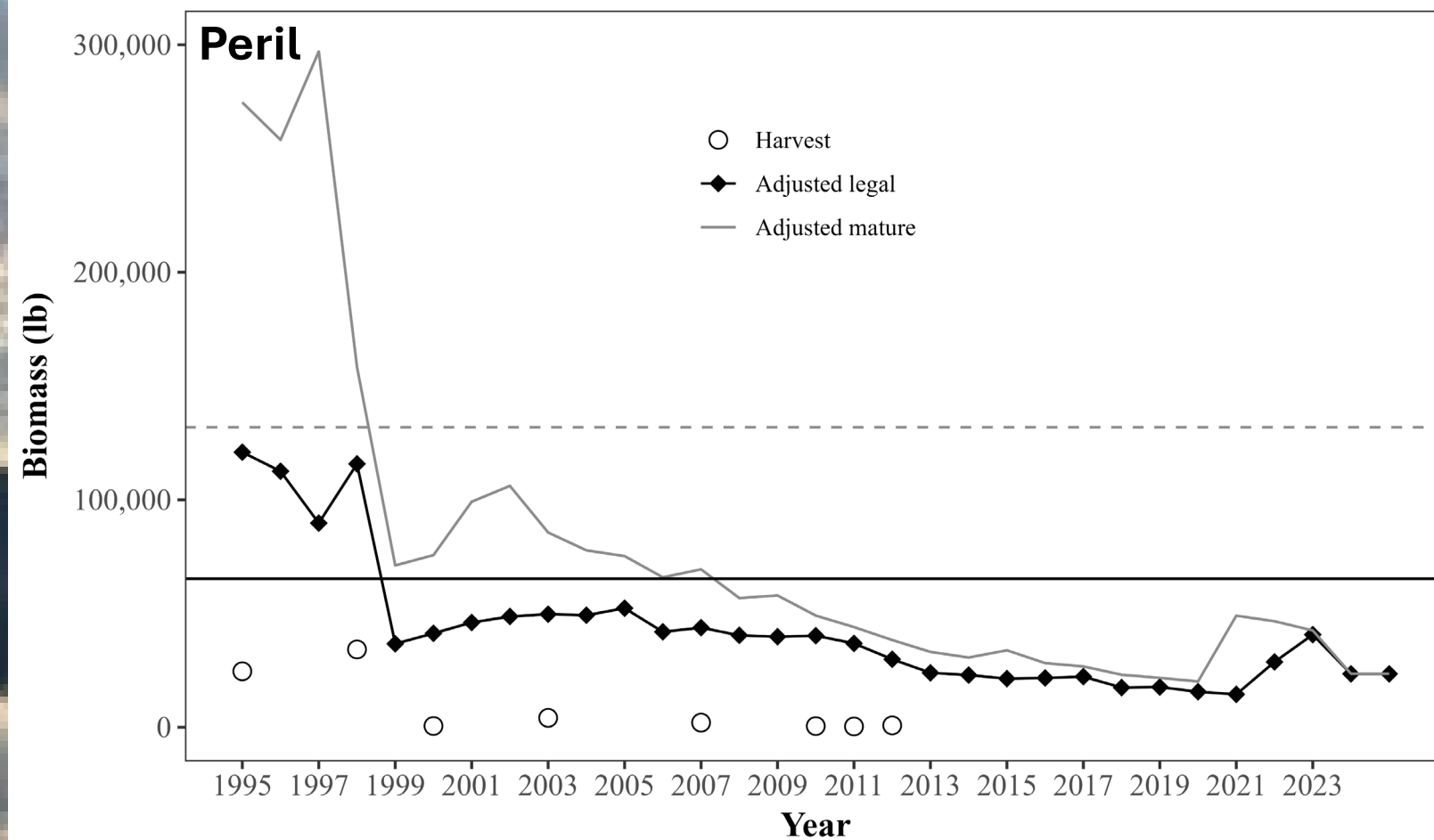
- Moderate stock health
- Significant short-term increasing trend in pre-recruit and recruit CPUEs
- Post-recruit and juvenile male CPUEs below their long-term averages



- Legal biomass increased 56%
- Mature male biomass increased 73% from 2024 model estimates

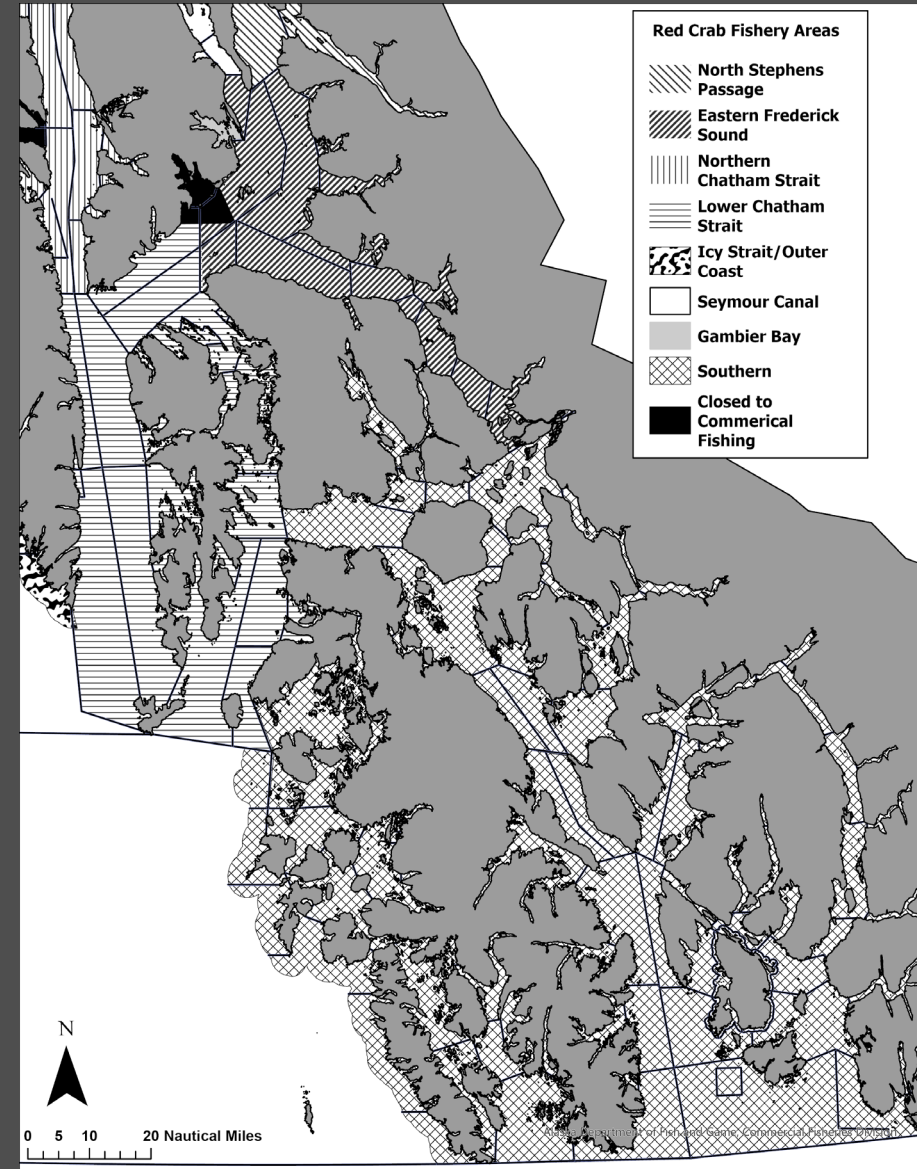
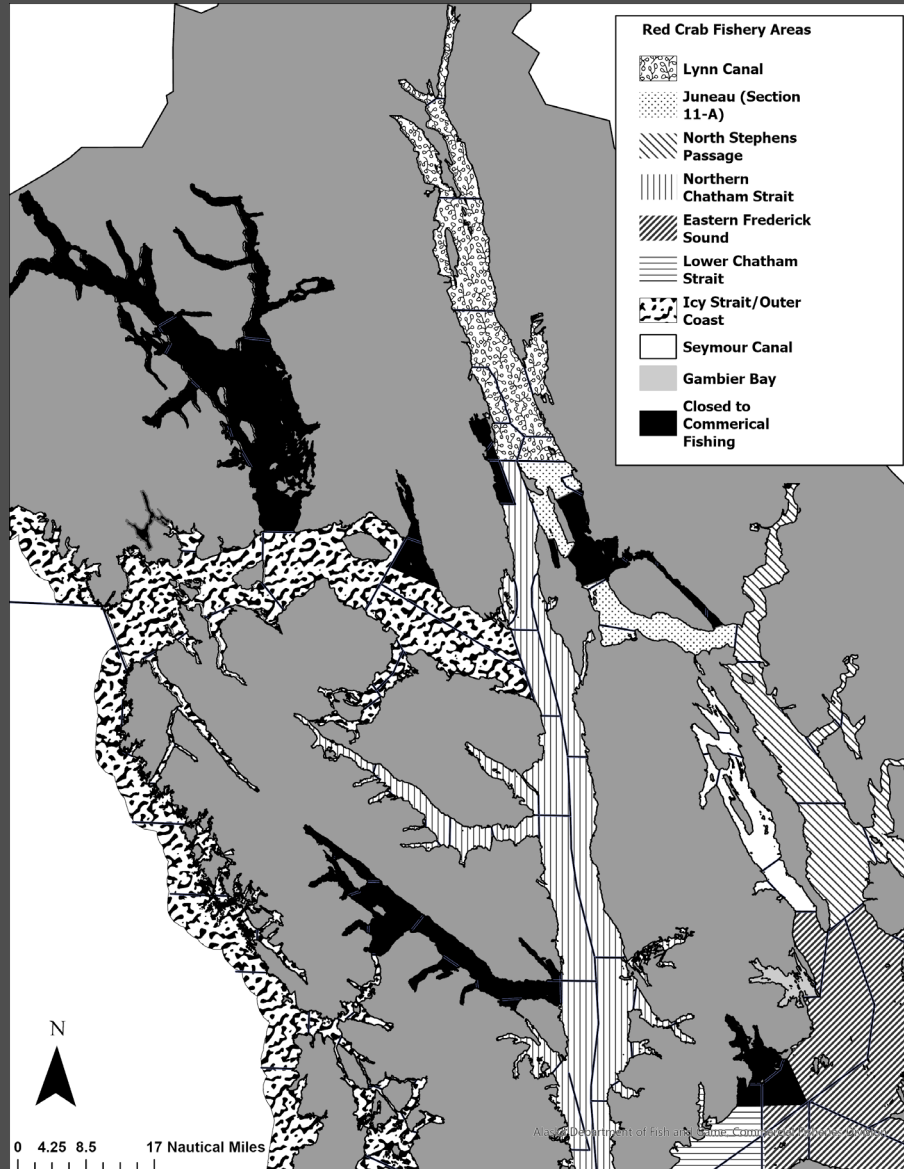


- Peril Strait was not surveyed in 2025
- Moved to a biennial survey schedule



- In 2024, mature biomass estimate was 82% and the legal biomass estimate was 64% below the baseline value

Commercial Red King Crab Management Areas



2025 Commercial Red King Crab Fishery Summary

Preliminary fish ticket data through 12/8/2025

***CONFIDENTIAL**

Management Area	GHL (lb)	Estimated Harvest through XX/XX (lb)	Estimated % of GHL Harvested through XX/XX	Number of Permits	Pot Lifts	Number of Crab	CPUE*	Closure Date(s) & Status
Juneau Area	20,446	18,626	91%	19	603	2,418	4.34	11/2/25
Gambier Bay Area	9,948	9,905	100%	18	511	1,405	2.74	11/2 & 11/5
Seymour Canal Area	44,705	73,767	165%	22	1,330	10,179	6.45	11/4/25
Eastern Frederick Sound Area	39,890	26,546	67%	29	2,971	4,007	1.15	11/25/25
Icy Strait/Outer Coast Area	14,938	*	*	9	*	*	*	12/1/25
Lower Chatham Strait Area	16,553	*	*	4	*	*	*	Open
Lynn Canal Area	13,925	15,494	111%	7	642	2,041	3.54	11/11/25
North Stephens Passage Area	39,920	41,593	104%	19	2,395	5,849	2.37	11/16/25
Northern Chatham Strait Area	6,133	16,924	276%	9	451	2,260	4.10	11/6/25
Southern Area	5,115	*	*	4	*	*	*	Open

Juneau Area (Section 11-A)

- 2025 GHL – 20,446 lb
- 2025 harvest – 18,626 lb (91% of the GHL)
- Pre-season opening set for 24-hours
- Fishery closure was extended by EO, open for two more hours and closed after 26-hours due to strong winds and currents to allow for gear retrieval
- 19 permit holders

Gambier Bay

- 2025 GHL – 9,948 lb
- 2025 harvest – 9,905 lb (100% of the GHL)
- Pre-season set opening of 24-hours
- ~50% of the GHL was harvested in the first 24-hours
- A second 24-hour fishery on November 4
- 18 permit holders

Seymour Canal

- 2025 GHL – 44,705 lb
- 2025 harvest – 73,767 lb (165% of the GHL)
- Closed by EO with ~9-hour notice, on November 4
- GHL was exceeded by over 60% due to harvest rates increasing dramatically after the second and third call-ins
- 22 permit holders

Northern Chatham Strait

- 2025 GHL – 6,133 lb
- 2025 harvest – 16,924 lb (276% of the GHL)
- Closed with ~8-hour notice on November 6
- GHL exceeded by over 175%, sharp increase in harvest rates
- 9 permit holders

Lynn Canal

- 2025 GHL – 13,925 lb
- 2025 harvest – 15,494 lb (111% of the GHL)
- Closed on November 11
- Gale force winds of 35 kt and greater for 3 days prior to closure
- 7 permit holders

North Stephens Passage

- 2025 GHL – 39,920 lb
- 2025 harvest – 41,593 lb (104% of the GHL)
- Closed on November 16
- 19 permit holders

Eastern Frederick Sound

- 2025 GHL – 39,890 lb
- 2025 harvest – 26,546 lb (67% of the GHL)
- Closed on November 25
- Fishery area closed prior to reaching the GHL due to large number of pots hauled and decreasing CPUEs throughout the management area
- 29 permit holders

Icy Strait/Outer Coast

- 2025 GHL – 14,938 lb
- 2025 harvest – **confidential** due to the # of processors who purchased crab from this management area
- Closed on December 1
- Area is partially surveyed; additional years needed before it can be included in the stock assessment survey
- Fishery performance was used to determine closure timing
- 9 permit holders

Lower Chatham Strait & Southern

- 2025 Lower Chatham Strait GHL – 16,553 lb
- 2025 Southern GHL – 5,115 lb
- 2025 harvest – **confidential** due to the # of processors who purchased crab from this management area
- Remains open, as of December 10
- 8 permit holders

2025 Southeast Red King Crab Fishery Harvest

Preliminary fish ticket data through 12/8/2025

**Estimated regionwide harvest:
205,607 lb**

**Preliminary ex-vessel fishery value:
\$5,371,822**



A group of seven people, likely a research or field team, are posing on the wooden deck of a boat. They are dressed in outdoor gear, including jackets, hats, and life vests. One person is lying on the deck in the foreground, wearing a bright yellow-green jacket. The background features a calm body of water and a range of mountains under a cloudy sky. A large, white, stylized text overlay is centered over the group.

Thank you!

Scenario 1:
Harvestable
legal male
biomass (LMB)
exceeds
200,000 lb



Competitive
fishery

Scenario 2:
Harvestable
LMB is less than
200,000 lb
and less than
50% of
median regional
LMB



No commercial
fishery

Scenario 3:
Harvestable
LMB is less than
200,000 lb and
LMB is greater
than 50% of
median regional
LMB



Open ICL fishery
and establish
harvest rates for
open areas



Max Harvest Rate =
 $0.1 \times \text{LMB} \times (\text{LMB} / \text{LMB}_{\text{median}})$



Apply Harvest
Rate to areas
that can support
crab removal