

ADF&G STAFF PRESENTATION

King and Tanner Task Force – December 2025



Golden King Crab Commercial Fishery

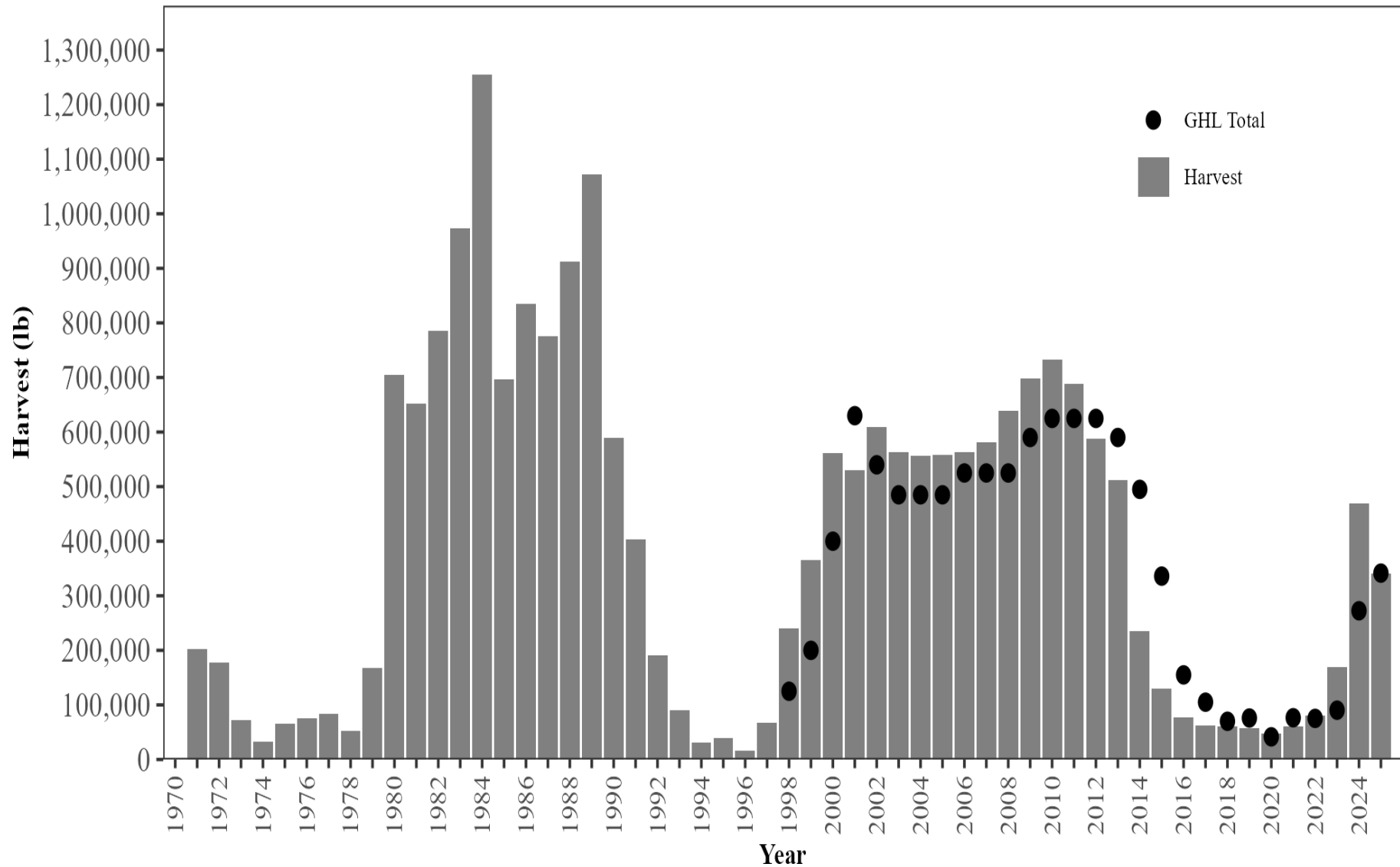
Adam Messmer, Lead King/Tanner Shellfish Biologist
Division of Commercial Fisheries, Southeast Region

Outline

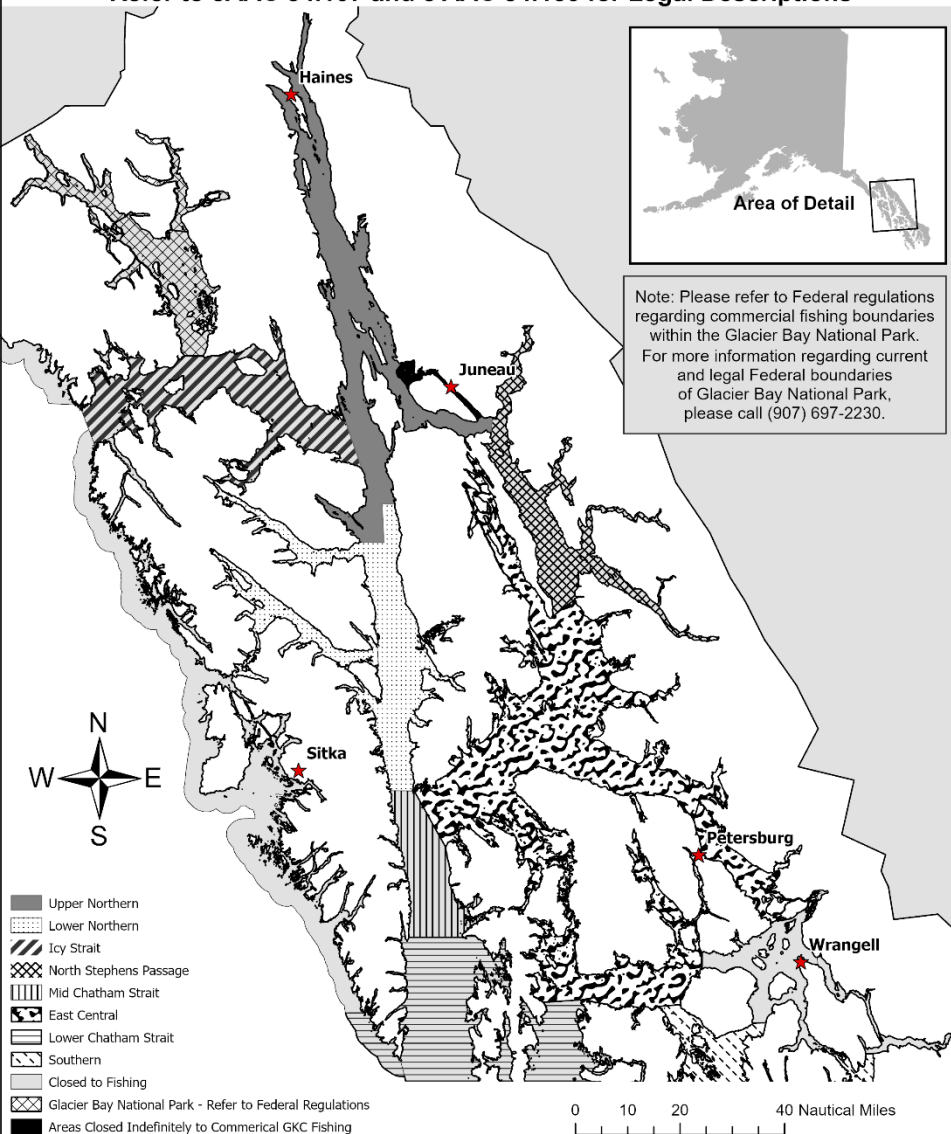


- Overall regional fishery performance
- Fishery area performances in 2025
- Preliminary GHGs for 2026

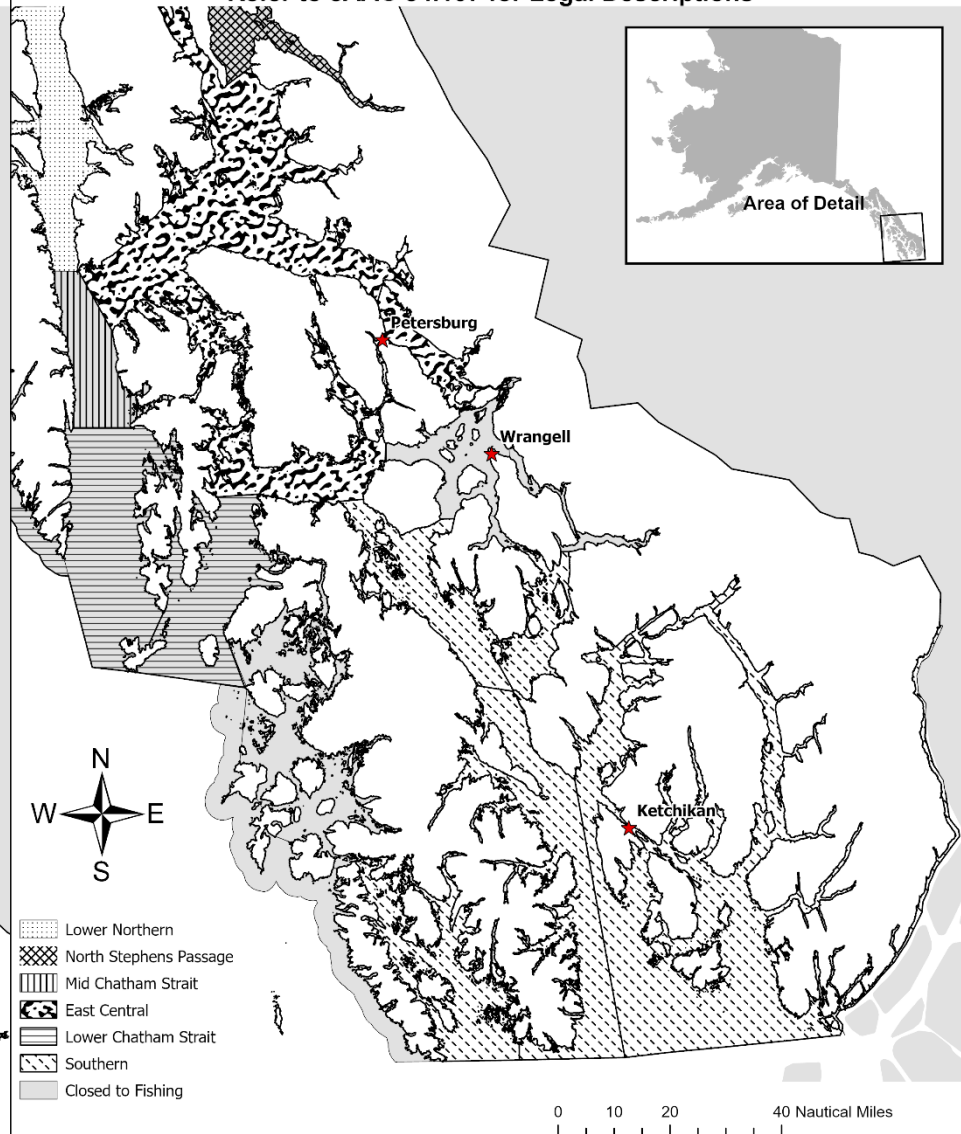
Regional Harvest and GHLs



**Golden King Crab Management Areas and Waters of
Registration Area A Closed and Not Open to Commercial Fishing
Refer to 5AAC 34.107 and 5 AAC 34.150 for Legal Descriptions**



**Golden King Crab Management Areas and Waters of
Registration Area A Closed and Not Open to Commercial Fishing
Refer to 5AAC 34.107 for Legal Descriptions**



Summary – GHL Review

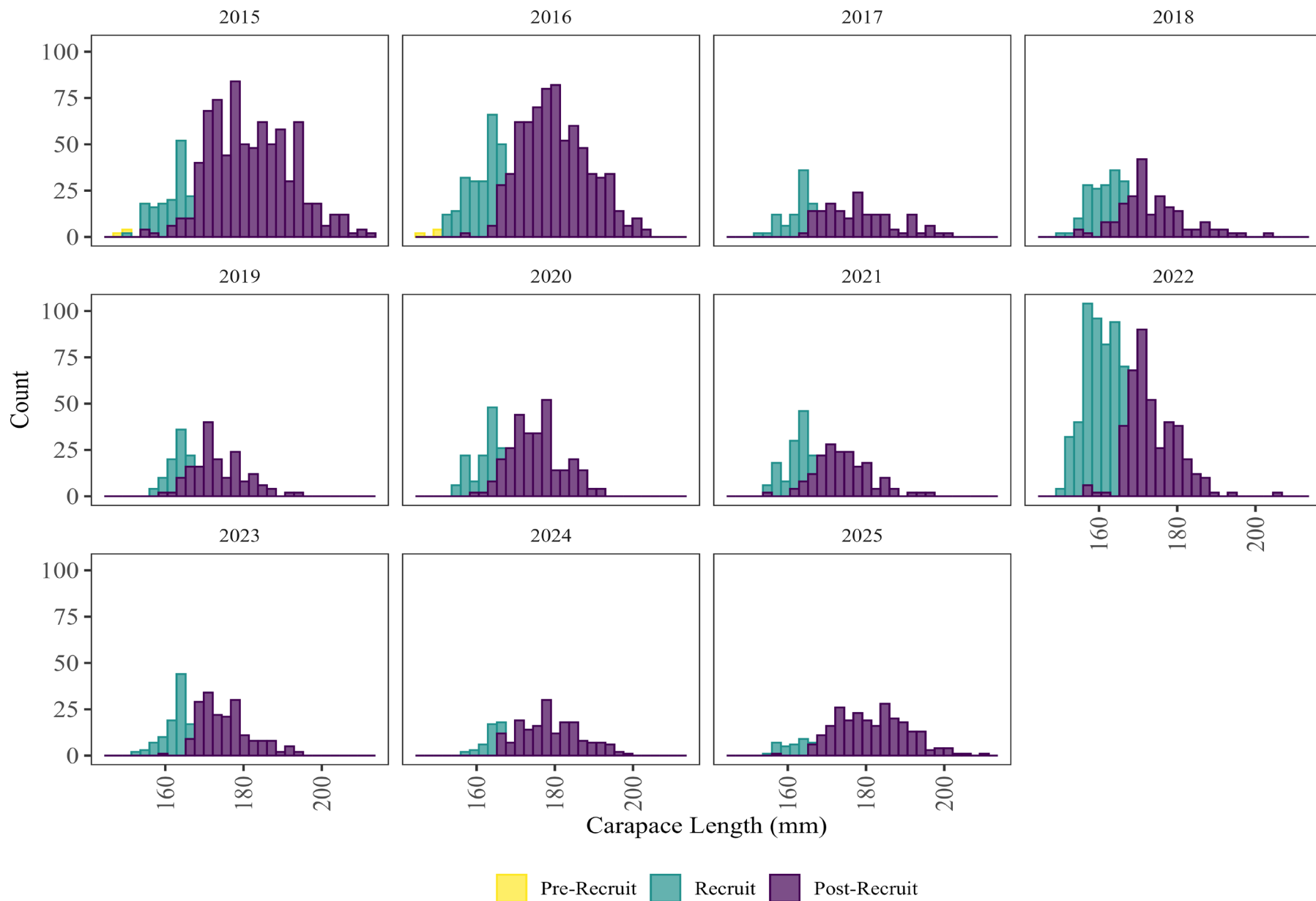
- GHL recommendations are made annually following GKC harvest strategy (when applicable) to minimize the risk of recruitment failure
- Reasons for this approach
 - No fishery independent survey/information
 - Recent fishery performance had been poor in some areas
 - GKC are less fecund than RKC; size at maturity varies across management areas; 20-month asynchronous reproductive cycle with non-feeding larvae that remain at depth

Data Sources

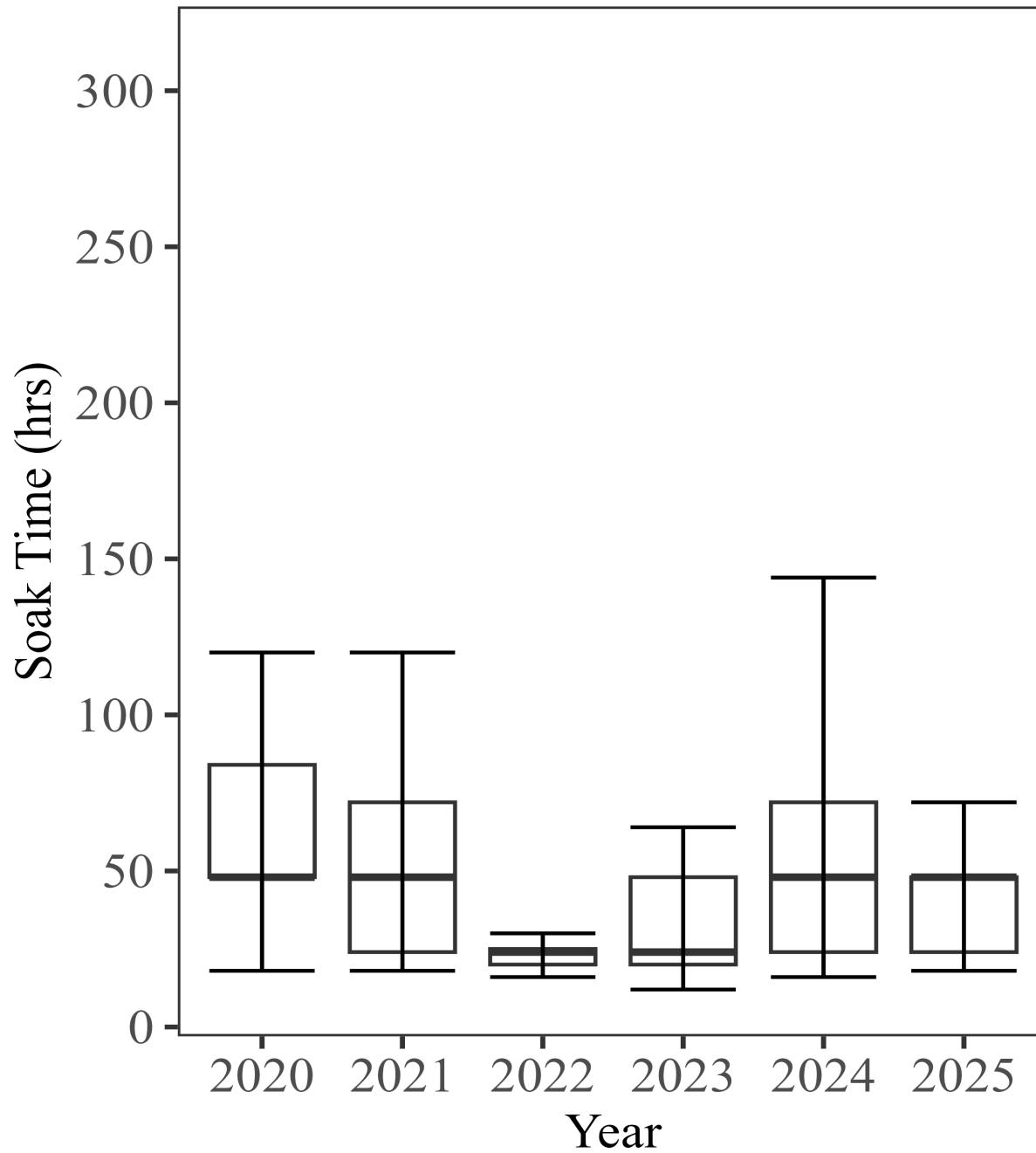
All data currently available to assess SE AK GKC are fishery dependent:

- 1) Commercial CPUE - fish ticket and logbook. Logbooks have been required in the fishery since 2000
- 2) Dockside sampling - length frequencies of crab by recruit class (recruit and post-recruit) from the early 1970s to present
- 3) Soak time plots
- 4) Juvenile and pre-recruit survey partnership
(2026 areas: Northern and Icy Strait)

Icy Strait



Icy Strait



2025 Fishery



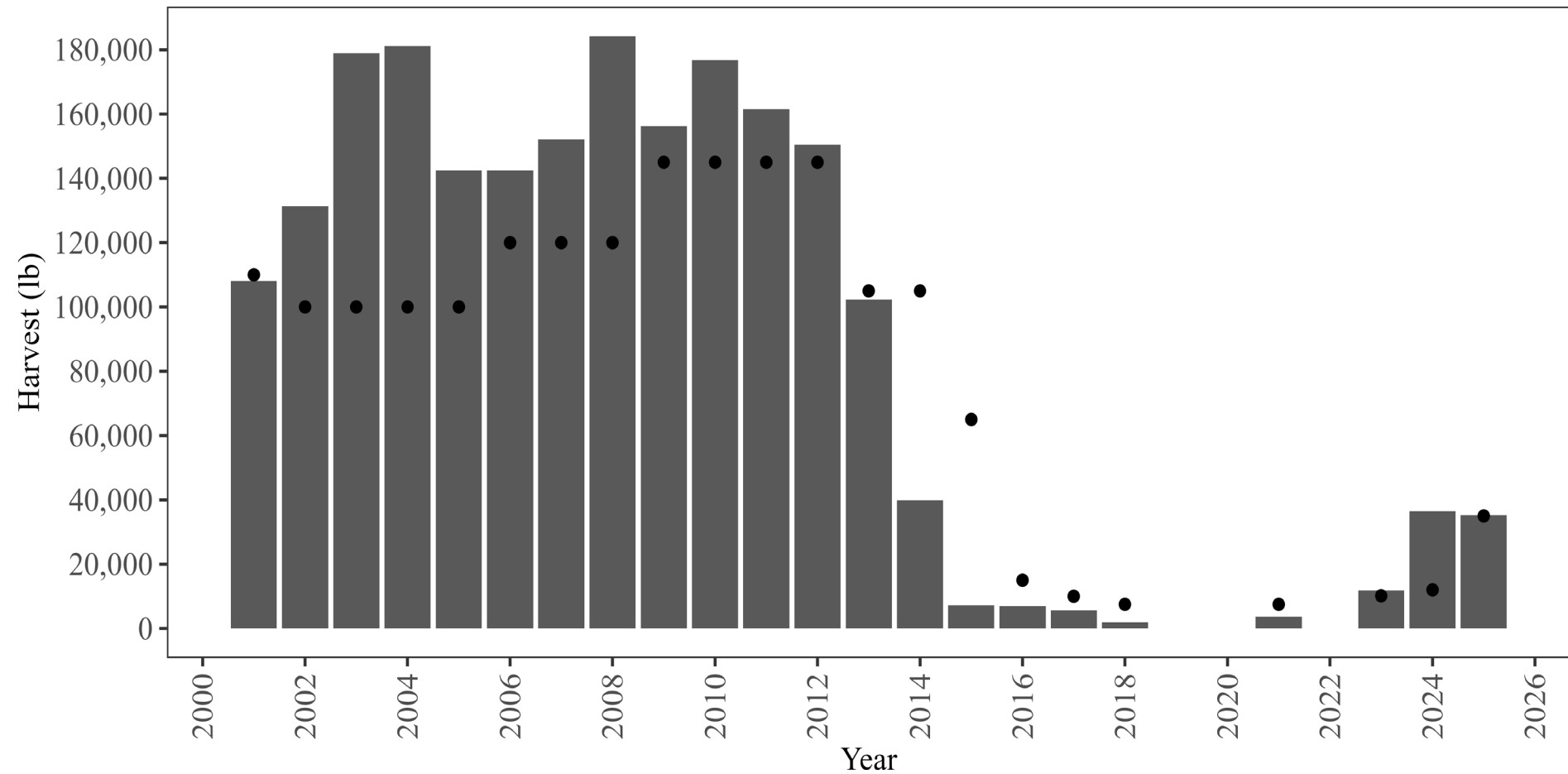
- All seven fishery areas were open:
 - 1) Northern – 35,000 lb
 - 2) Icy Strait – 25,000 lb
 - 3) North Stephens Passage – 8,000 lb
 - 4) East Central – 202,500 lb
 - 5) Mid-Chatham Strait – 40,500 lb
 - 6) Lower Chatham Strait – 7,500 lb
 - 7) Southern – 23,000 lb
- Total Region GHL – **341,500 lb**

Northern

- GHL – 35,000 lb
- Harvest – 35,203 lb
- Season length – 17 days
- Avg CPUE – 1.87 crab per pot

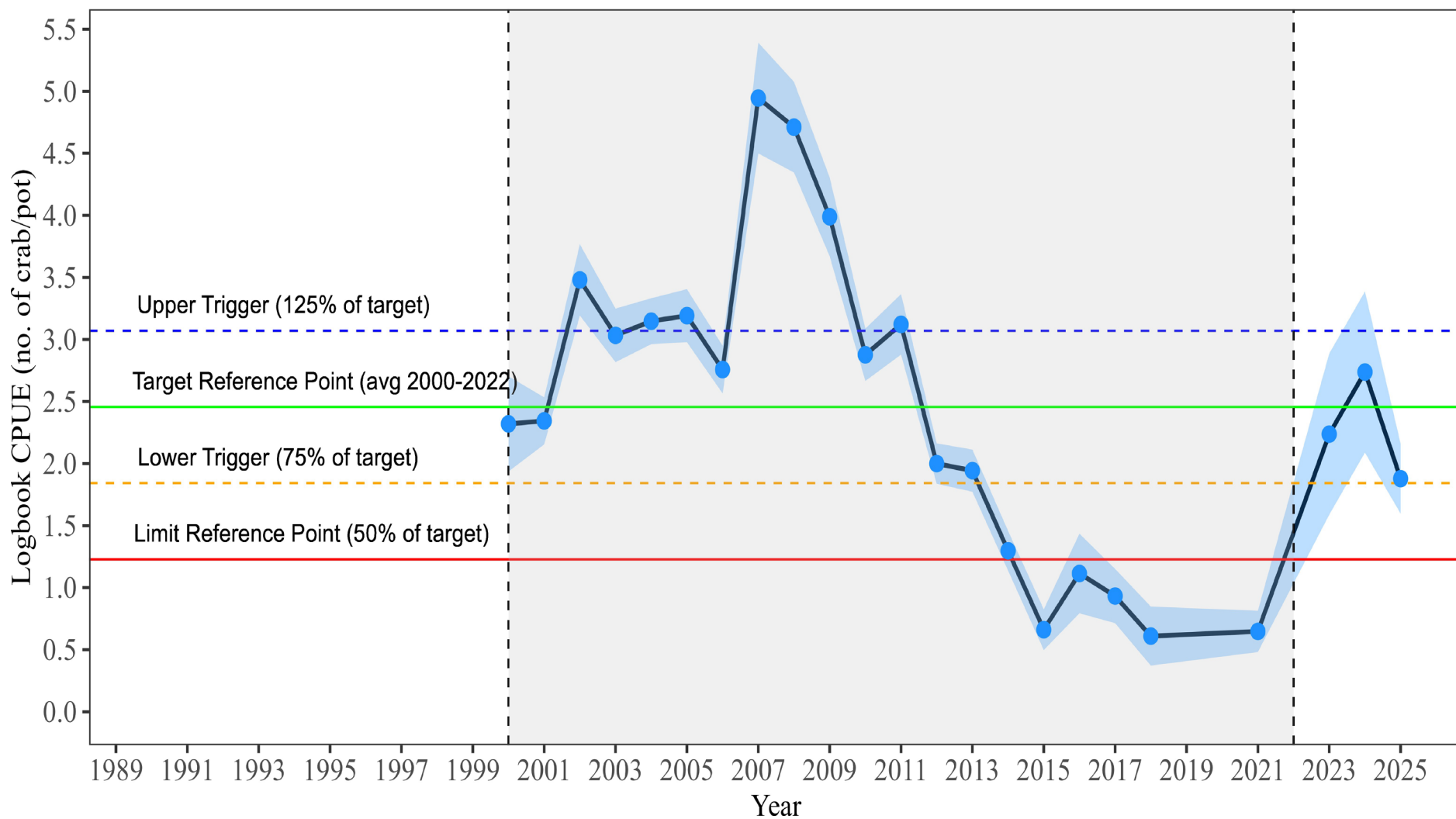


Northern



2025 harvest – 35,203 lb

Northern logbook data



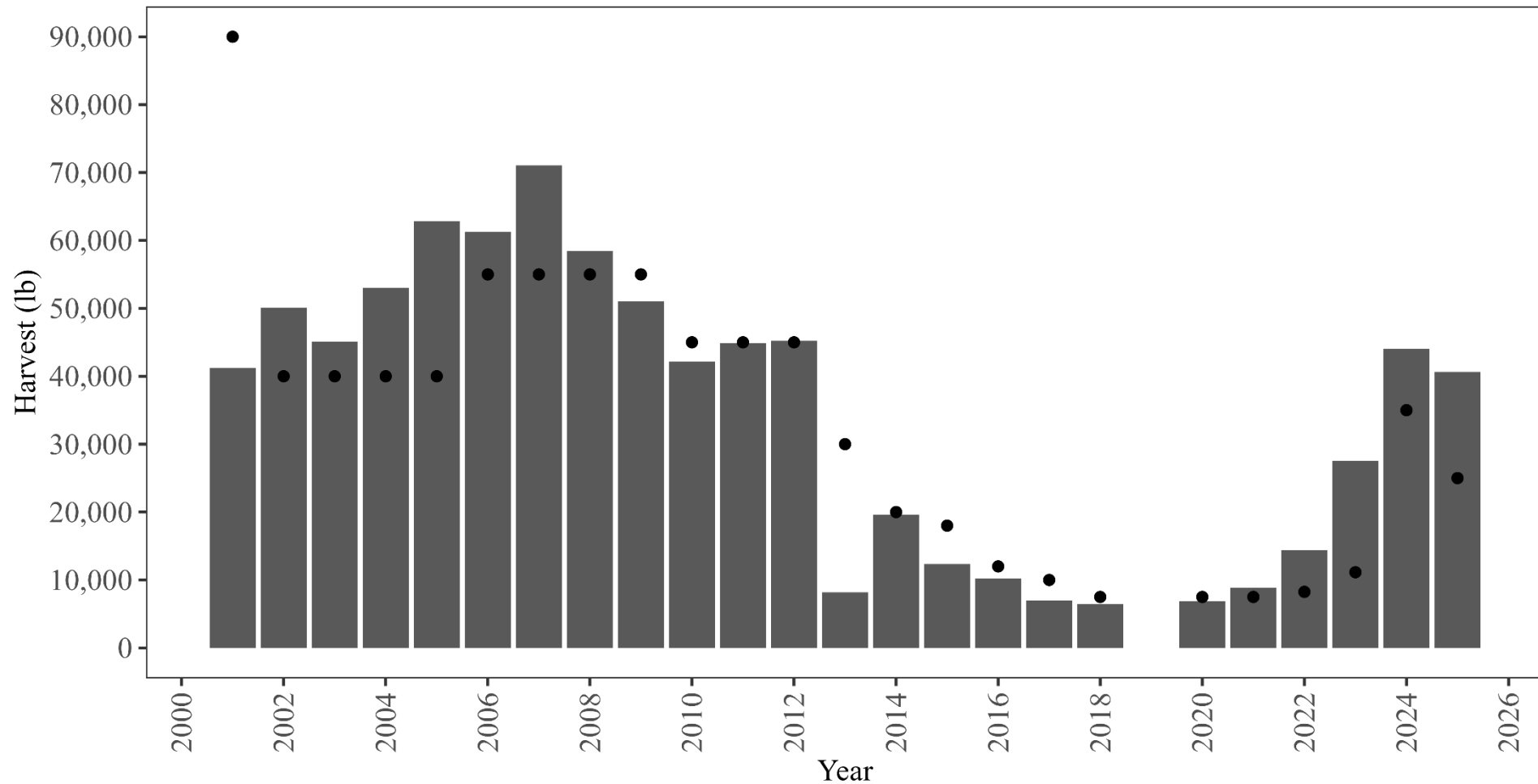
2025 average CPUE – 1.87 crab/pot



Icy Strait

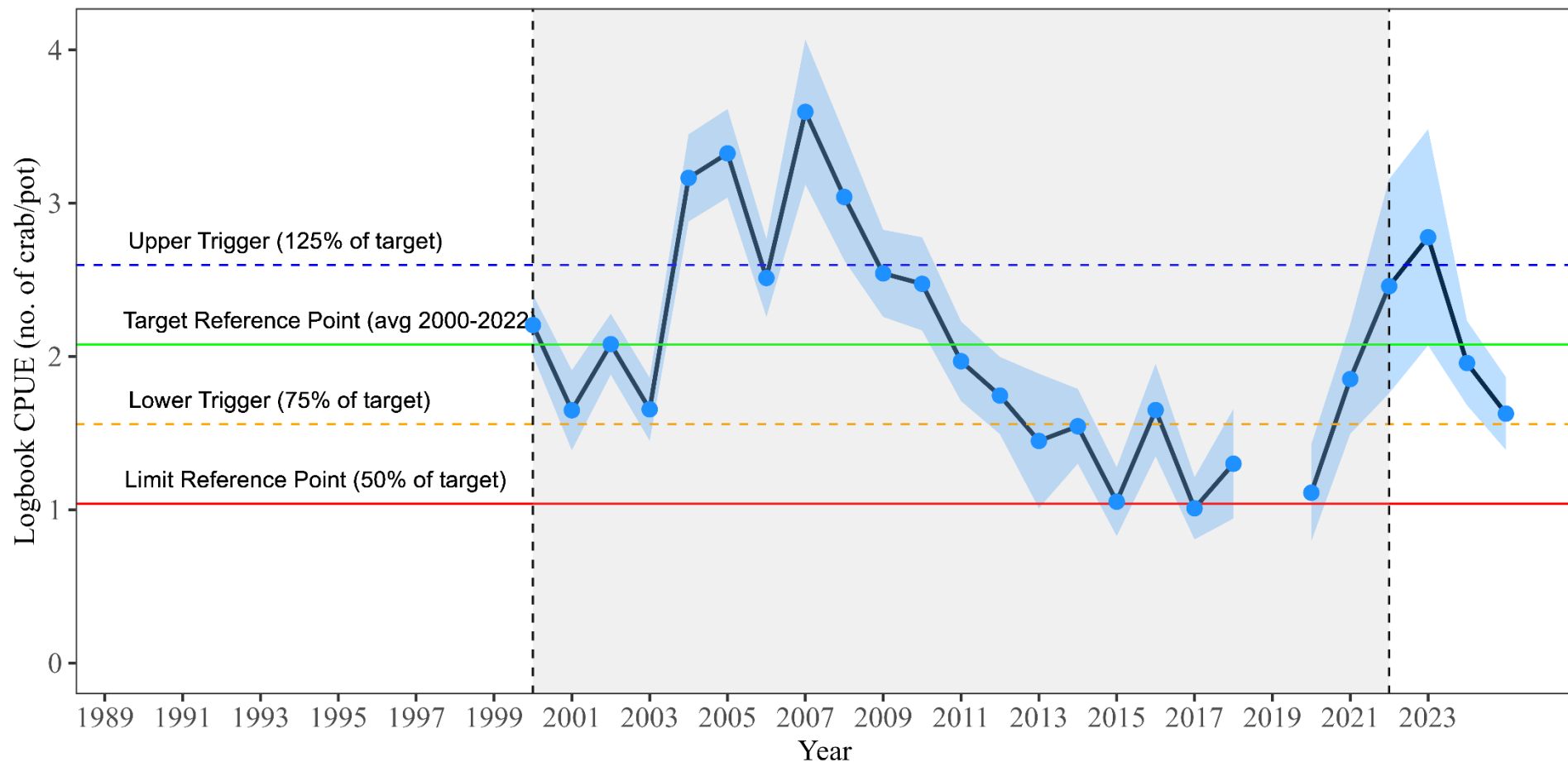
- GHL – 25,000 lb
- Harvest – 40,650 lb
- Season length – 19 days
- Avg CPUE – 1.63 crab/pot

Icy Strait



2025 harvest – 40,650 lb

Icy Strait logbook data



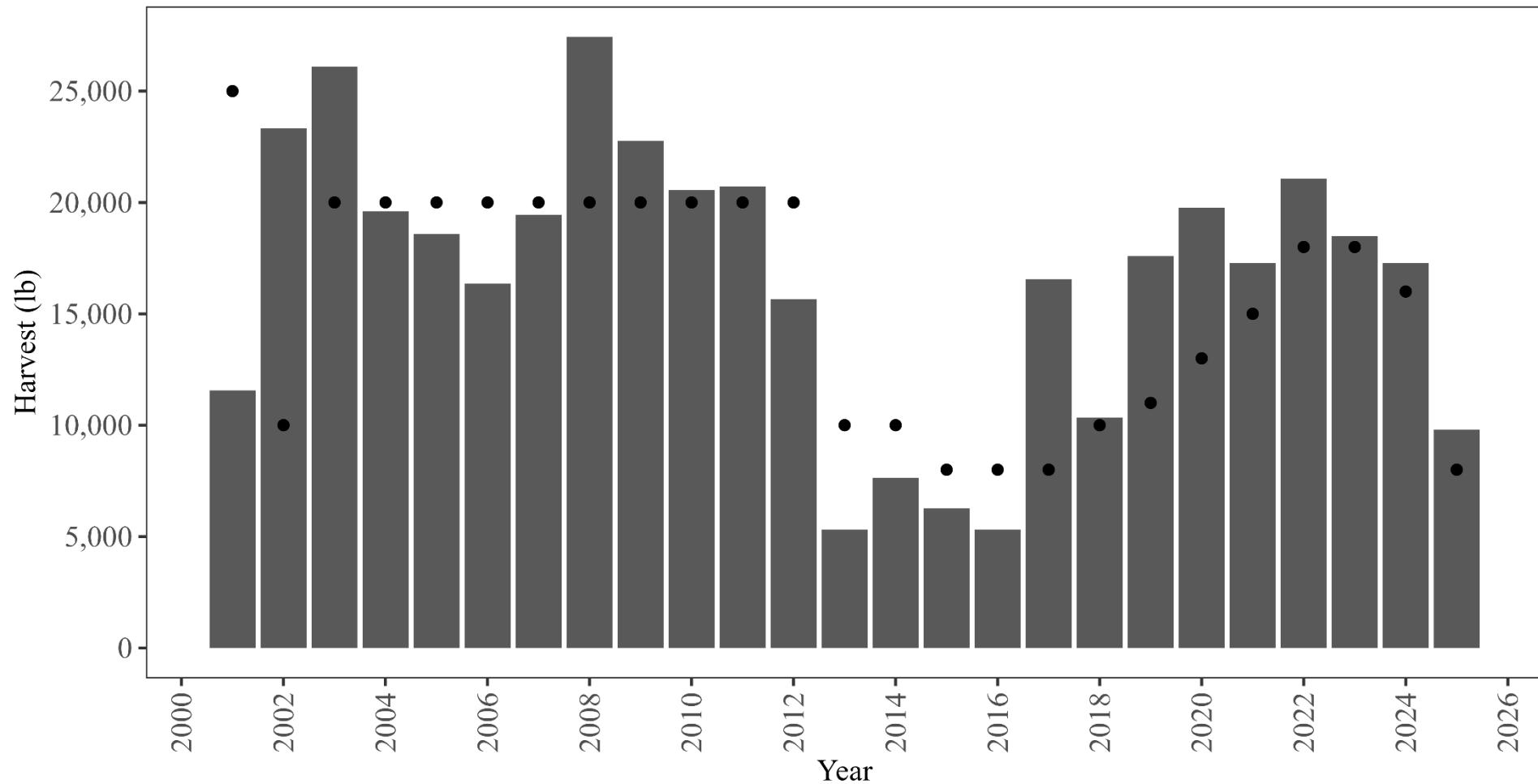
2025 average CPUE – 1.63 crab/pot

North Stephens Passage

- GHL – 8,000 lb
- Harvest – 9,806 lb
- Season length – 53 days
- Avg CPUE – .51 crab/pot

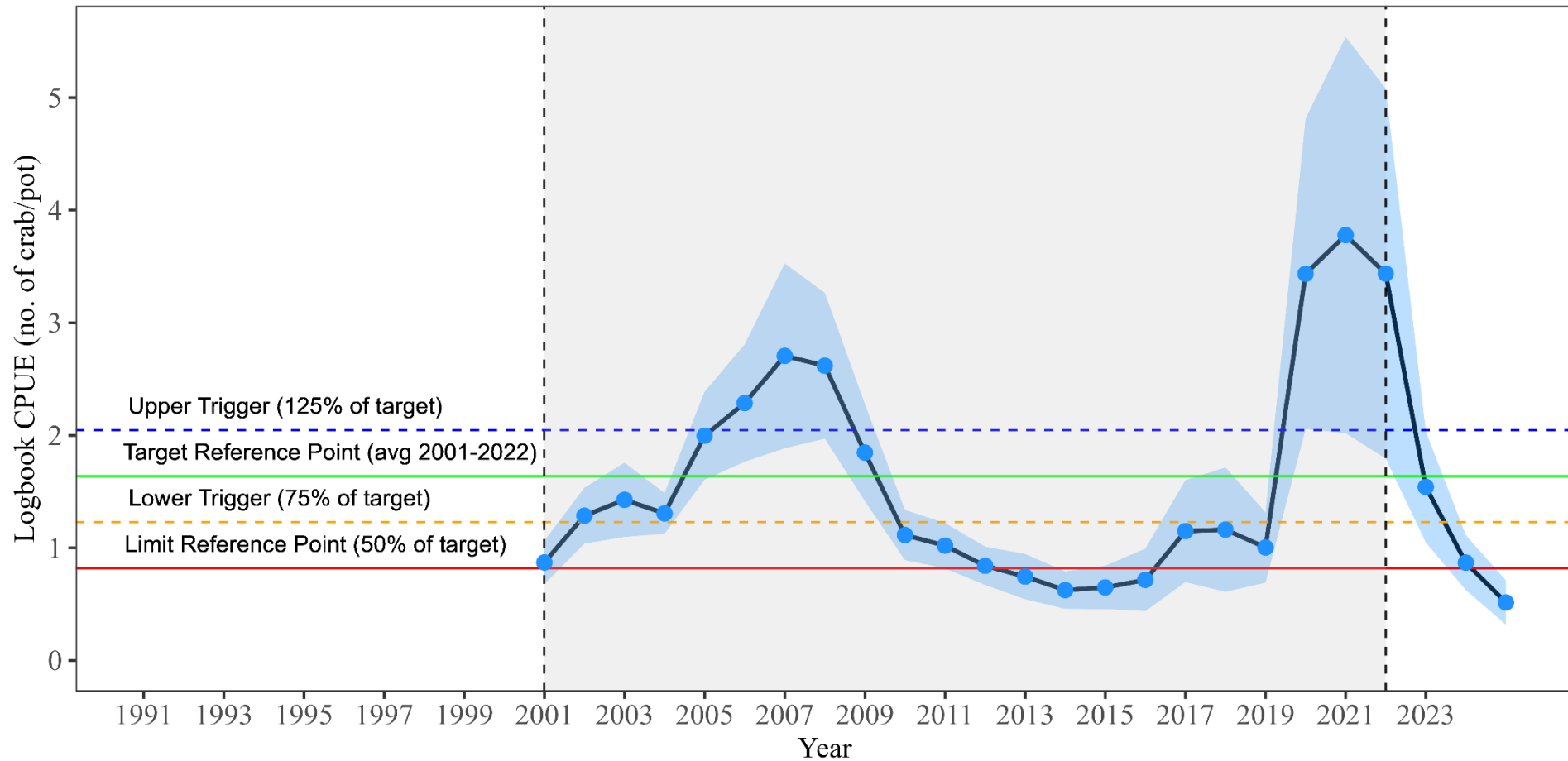


North Stephens Passage



2025 harvest – 9,806 lb

North Stephens Passage logbook data



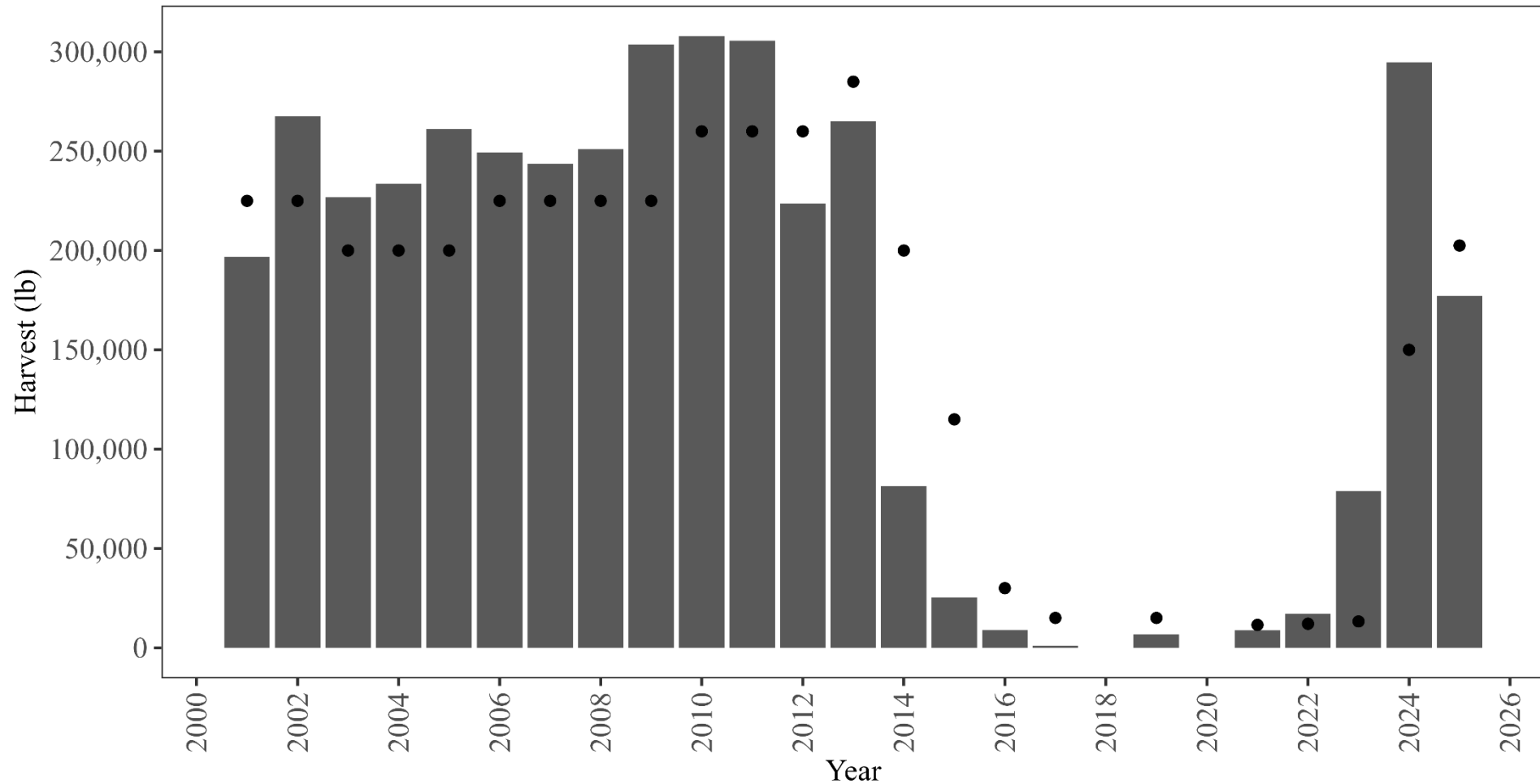
2025 average CPUE – 0.51 crab/pot

East Central

- GHL – 202,500 lb
- Harvest – 177,061 lb
- Season length – 6 days
- Avg CPUE – 4.4 crab/pot
- Erratic CPUE

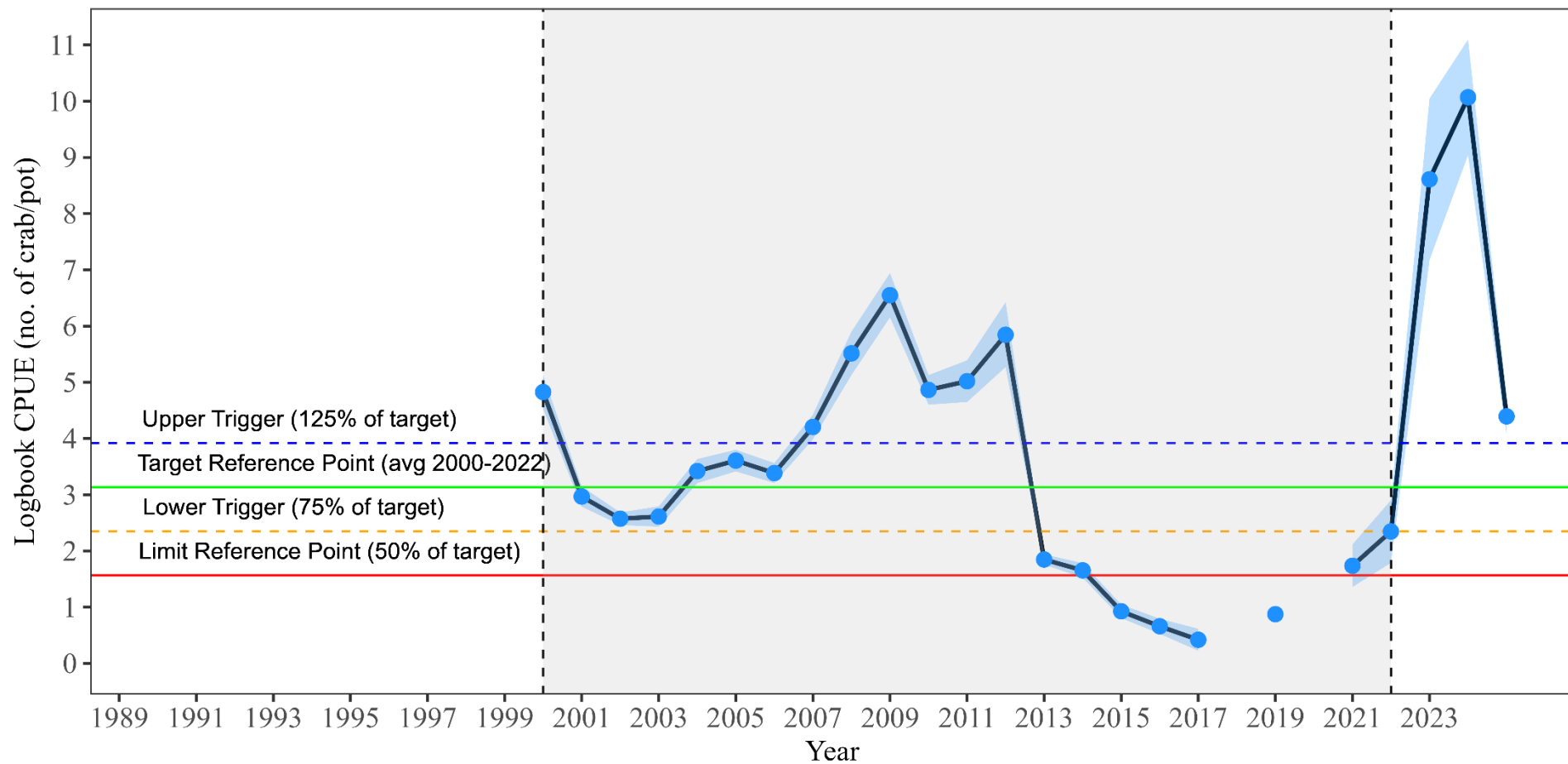


East Central



2025 harvest – 177,061 lb

East Central logbook data



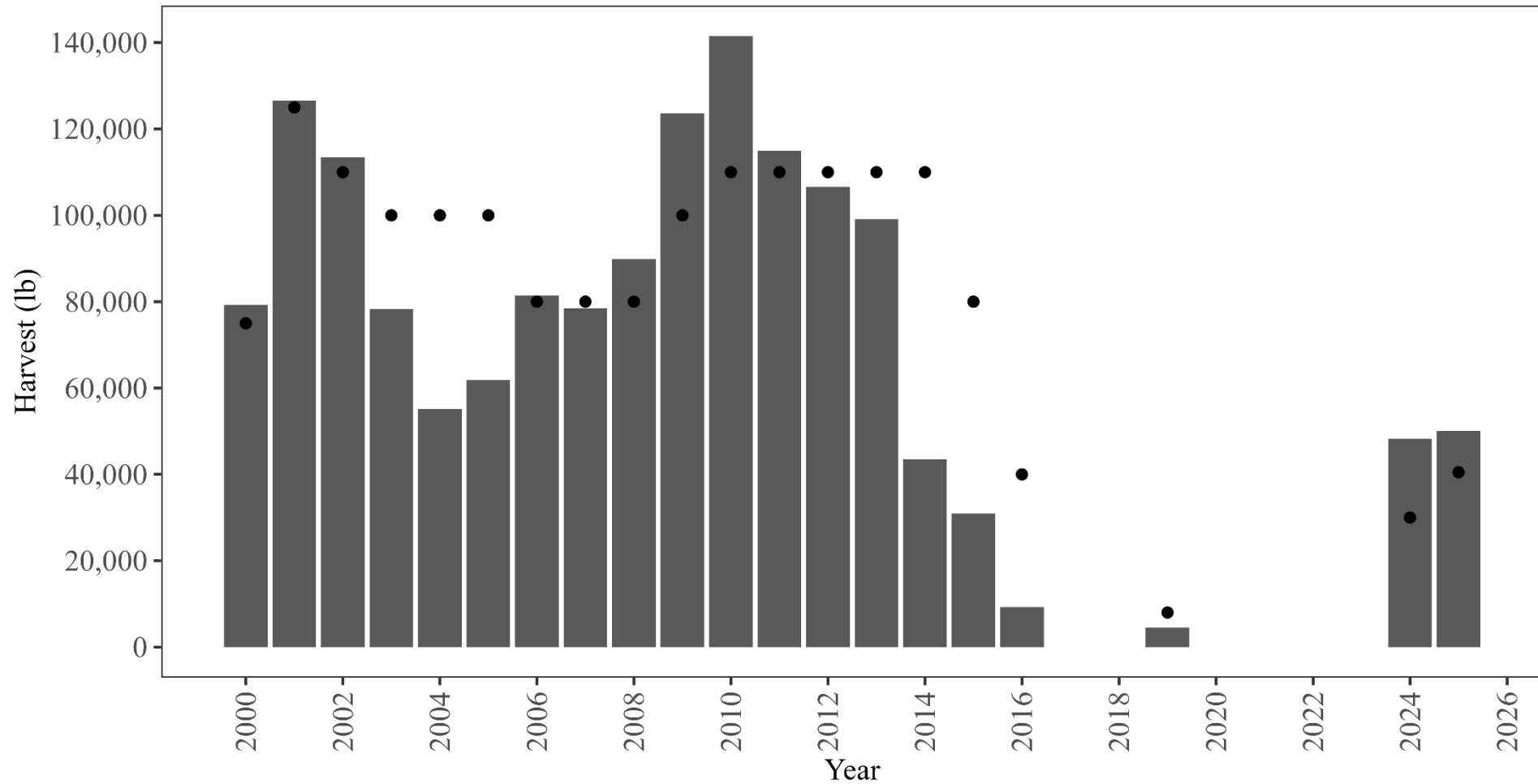
2025 average CPUE – 4.4 crab/pot

Mid-Chatham Strait

- GHL – 40,500 lb
- Harvest – 50,064 lb
- Season length – 36 days
- Avg CPUE – 4.5 crab/pot

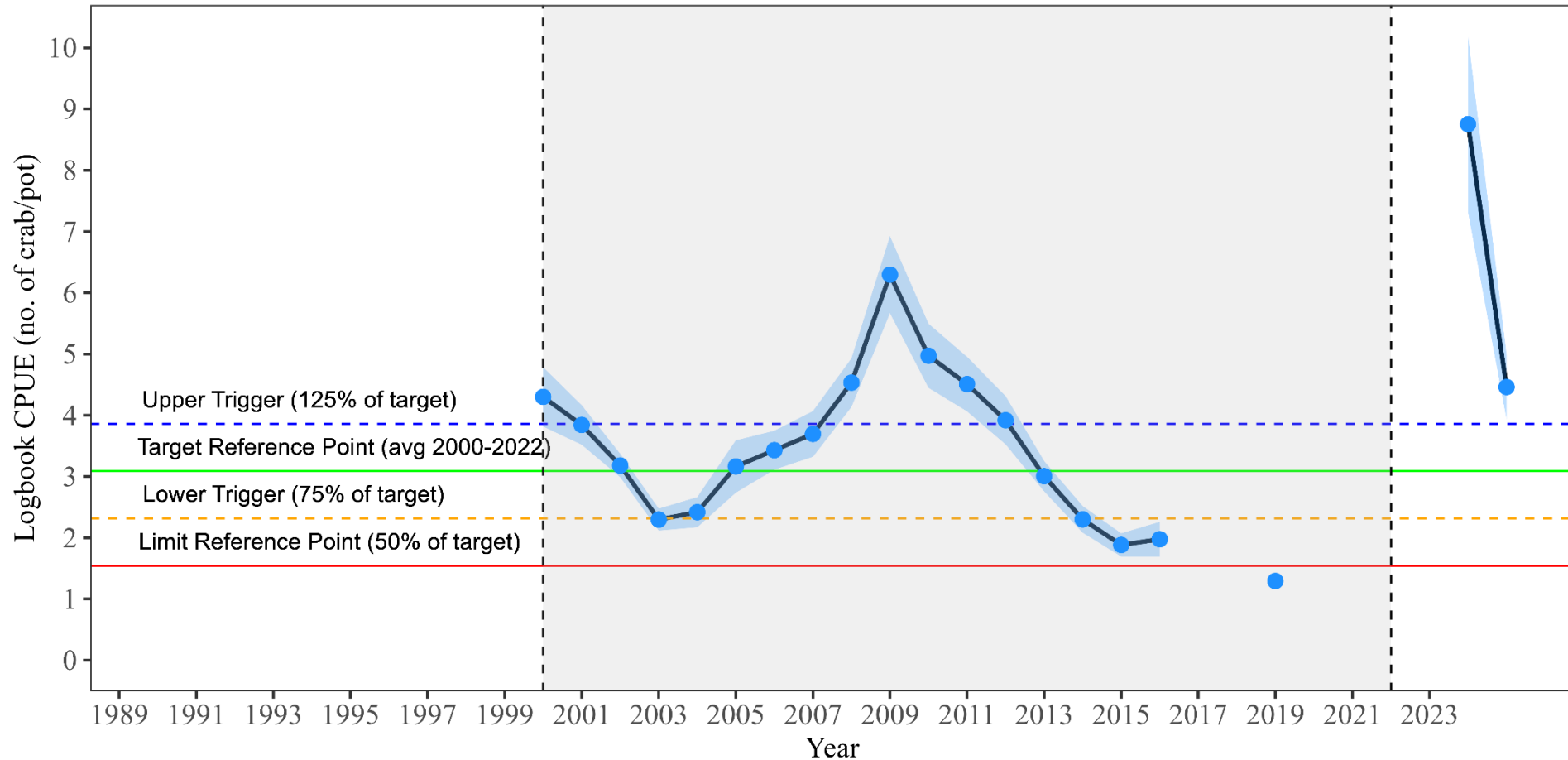


Mid-Chatham



2025 harvest – 50,064 lb

Mid-Chatham logbook data



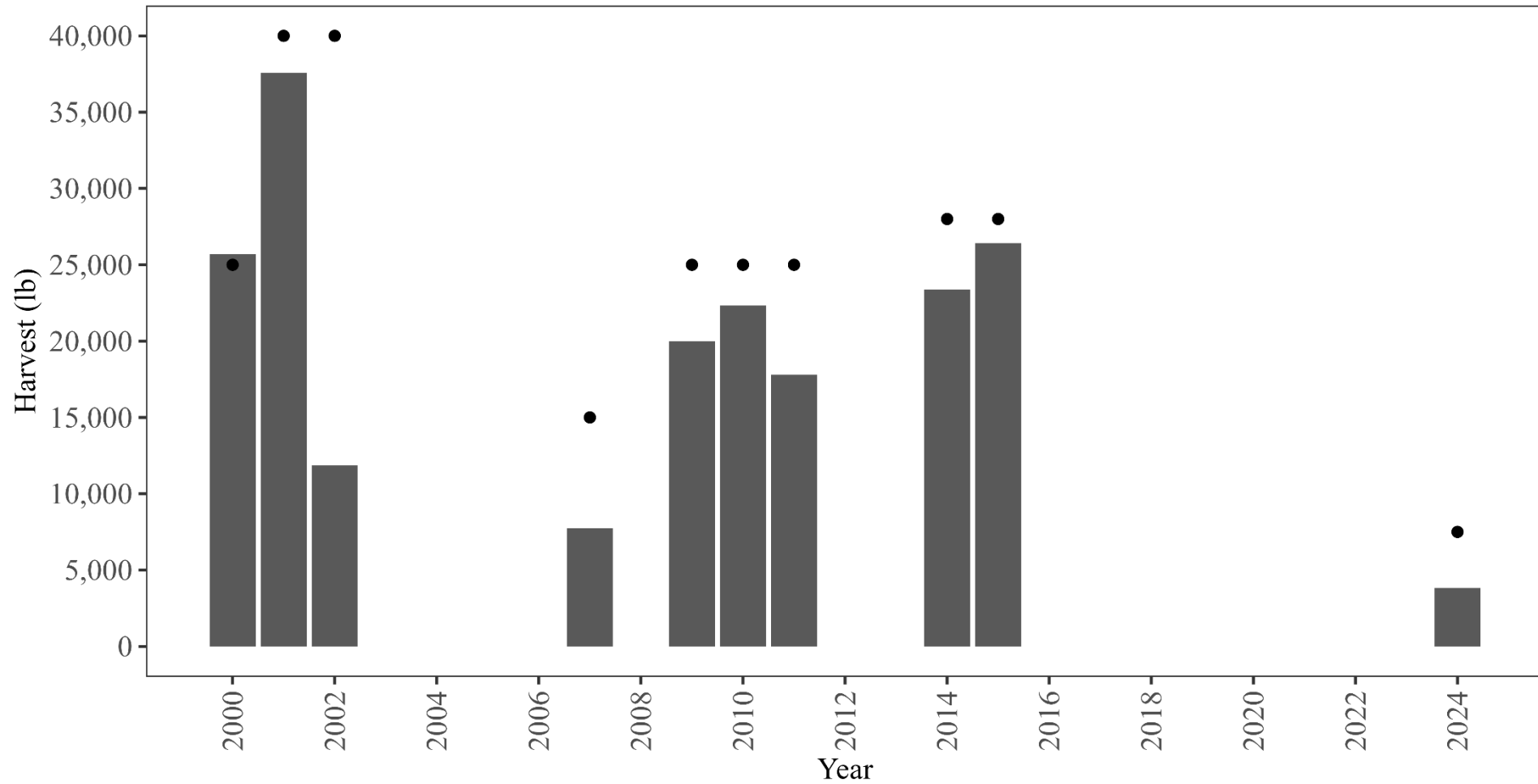
2025 average CPUE – 4.5 crab/pot

Lower Chatham Strait

- No effort in 2025
- Closed by regulation December 1, 2025

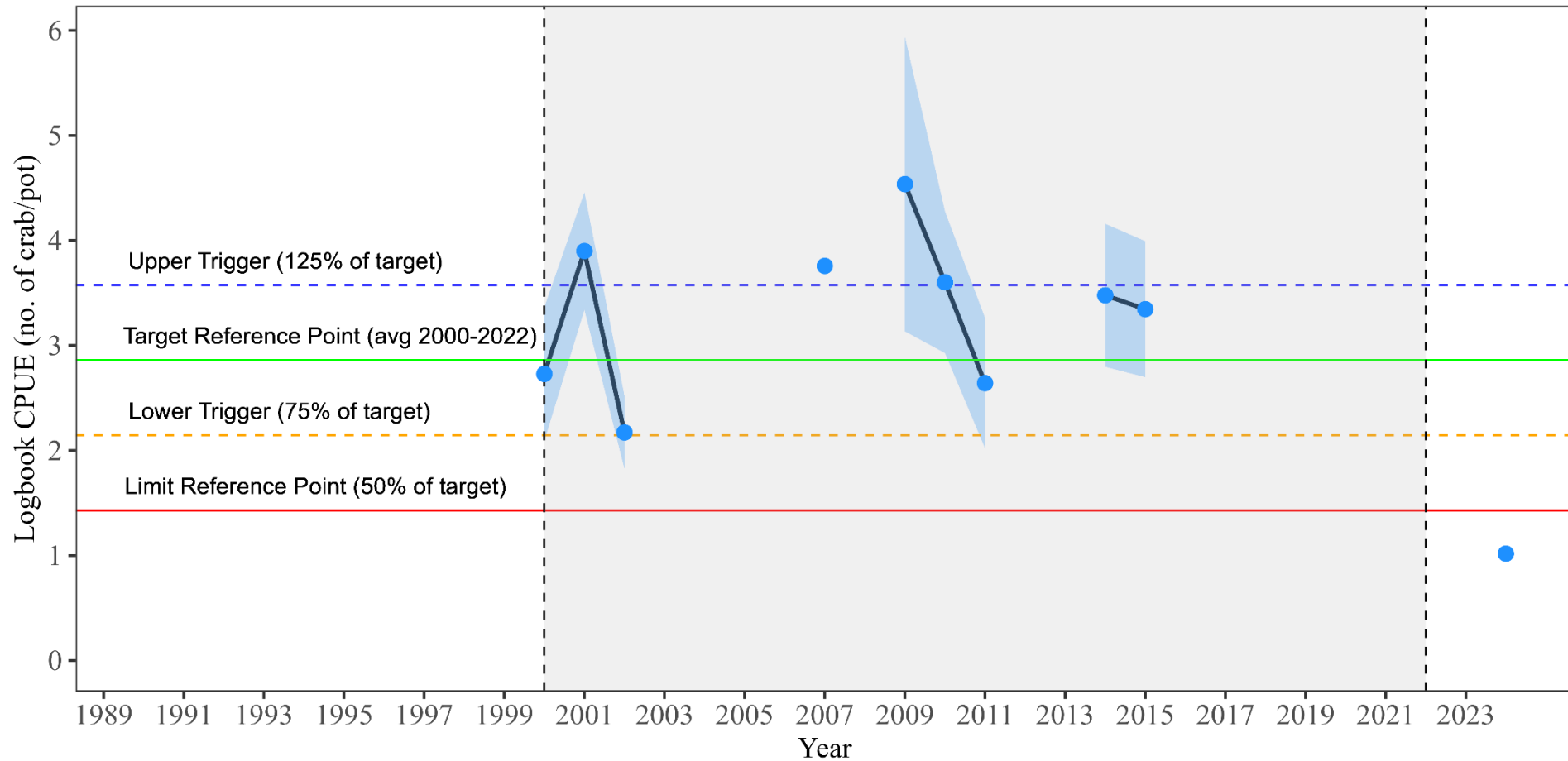


Lower Chatham



2025 harvest – 0 lb

Lower Chatham logbook data



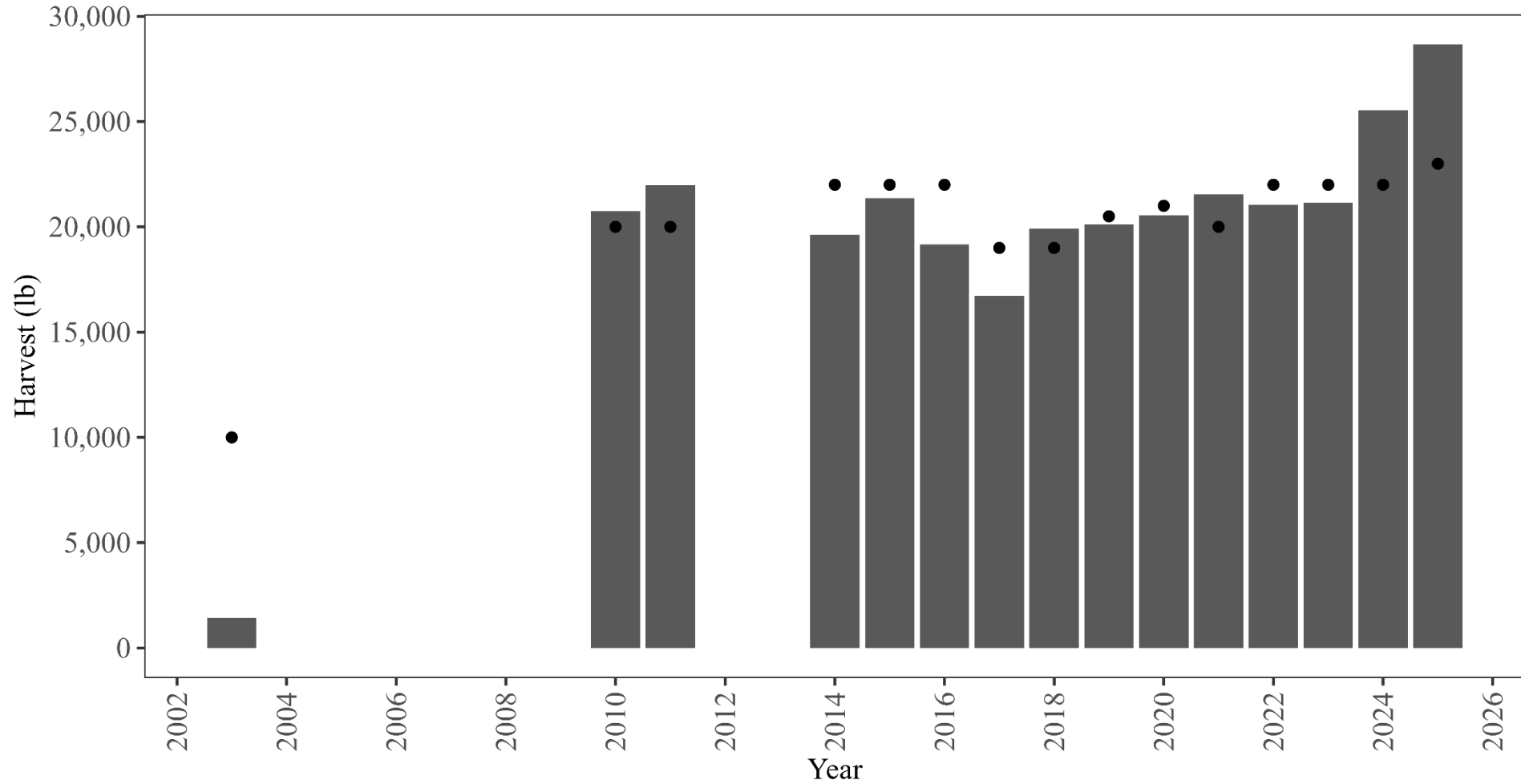
2025 average CPUE – No pots hauled

Southern

- GHL – 23,000 lb
- Harvest – 28,670 lb
- Season length – 85 days
- Avg CPUE – 3.77 crab/pot

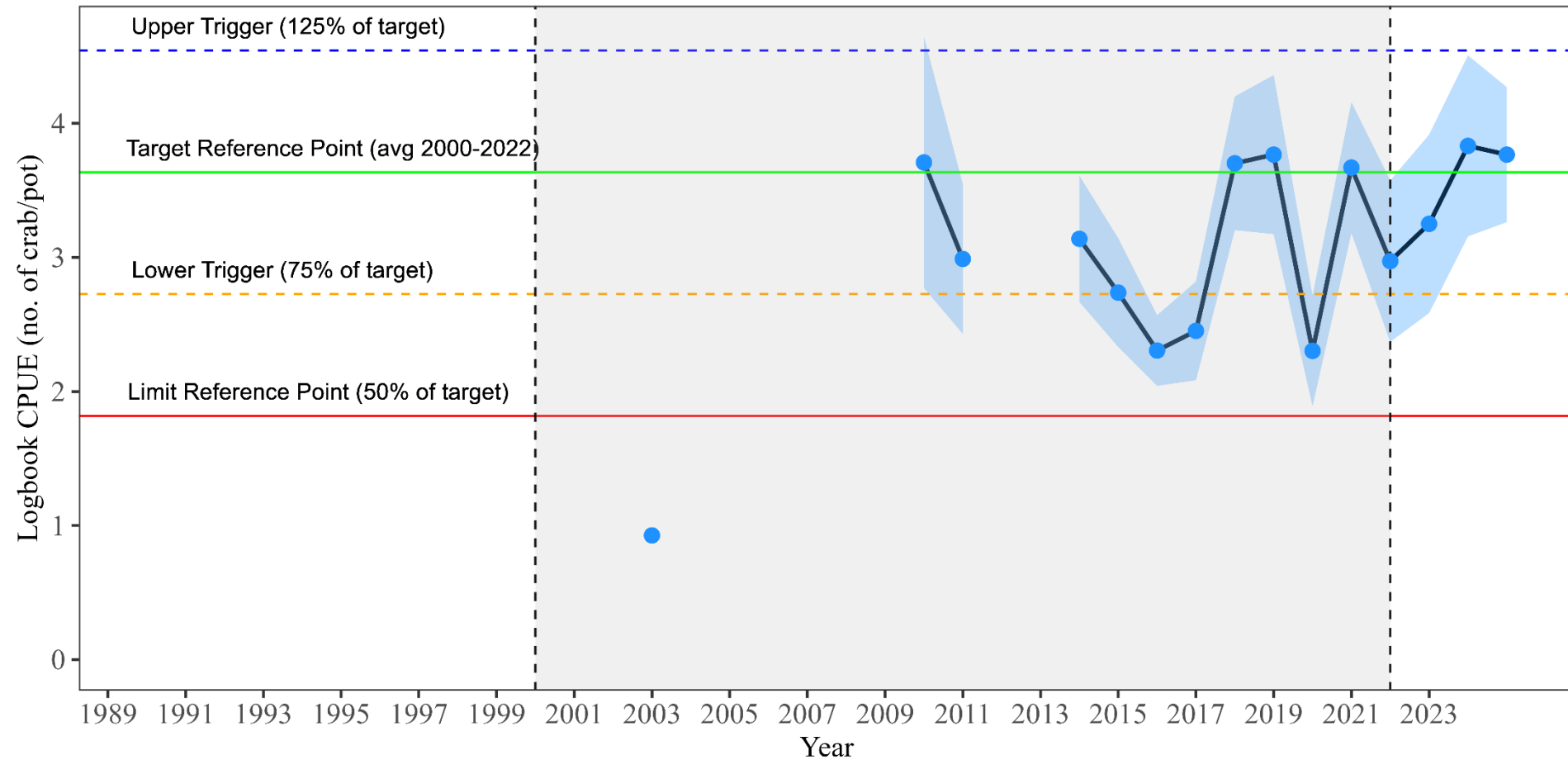


Southern



2025 harvest – 28,670 lb

Southern logbook data



2025 average CPUE – 3.77 crab/pot

2026 Fishery

- Season will open on February 17, 2026 @ 10:00am (New criteria set at 2025 BOF)
- Registration deadline January 20 (Available December 22nd)
- Harvest strategy, with in-season and post-season decision rules defining management actions
- Northern Area will be split into two areas (BOF Action)
- Southern and Lower Chatham had their areas extended (BOF action)
- Secondary performance indicators to refine the recommendations
- Post season participant surveys

Preliminary GHLs for 2026 Fishery

- **Northern:** 30,000 lb; 14% reduction
Upper Northern – 16,800 lb
Lower Northern – 13,200 lb
- **Icy Strait:** 22,500 lb; 10% reduction
- **North Stephens Passage:** Closed for one year
- **East Central:** 202,500 lb; same as 2025
- **Mid-Chatham Strait:** 44,500 lb; 10% increase
- **Lower Chatham Strait:** 7,500 lb; same as 2025
- **Southern:** 23,000 lb; same as 2025

Regional GHL: 330,000 lb; 11,500 lb decrease from 2025

2026 Daily Vessel Call-in

- Mandatory and enforced by AWT
- 1-907-772-5200
 - Name/vessel name/ADFG #
 - Date
 - Stat-area fished
 - # of pots
 - # of crab
- Call-ins will start February 16 (the day prior to the fishery) – state the management area where you will start fishing



Questions?



ADF&G/Industry Golden king crab (GKC) Juvenile and Pre-Recruit Monitoring Program

Objective: to collect Juvenile, pre-recruit and female GKC information from the Northern/Icy Management Areas in 2025.

- Project 1 – Sampling 10 closed pots by ADF&G employee.
- Project 2 – Closed pots crab accounting by industry volunteers



Project 1 – Sampling 10 closed pots by ADF&G employee

- After the management area is closed, one vessel will be allowed to sew up the escape rings (using bio twine) on 10 pots and place them on high density juvenile GKC areas. These areas will be mutually agreed on by the fleet and the department. Stipulations for the monitoring program include:
- Within 30 days of the management area closure, a vessel will take an observer onto the grounds to retrieve the 10 pots that were previously sewn up and set. The observer will measure all of the crab. The vessel may not haul closed pots without a ADF&G representative onboard.
- The vessel participating in the program will be awarded up to a \$4,900 stipend to cover the cost of fuel and food. If 10 pots are not hauled, the full stipend will not be awarded; \$490 will be deducted for every pot less than 10 pots.
- The vessel participating will get juvenile location information from vessels participating in Project 2.
- The vessel must be finished actively fishing in the 2026 commercial GKC/Tanner fishery to participate.
- The vessel must contact the department before setting gear.
- Pots are required to soak for a minimum of 48 hours and must be retrieved within 6 days of setting, weather permitting.
- There will be no retention of caught crab in survey pots.
- If more than one vessel is interested in participating in Project 1, interested fishermen and KTTF co-chairs will work together to determine who will conduct the survey.
- The vessel operator will fill out a logbook recording latitude and longitude of each Project 1 pot and the time that the pot is set and hauled.