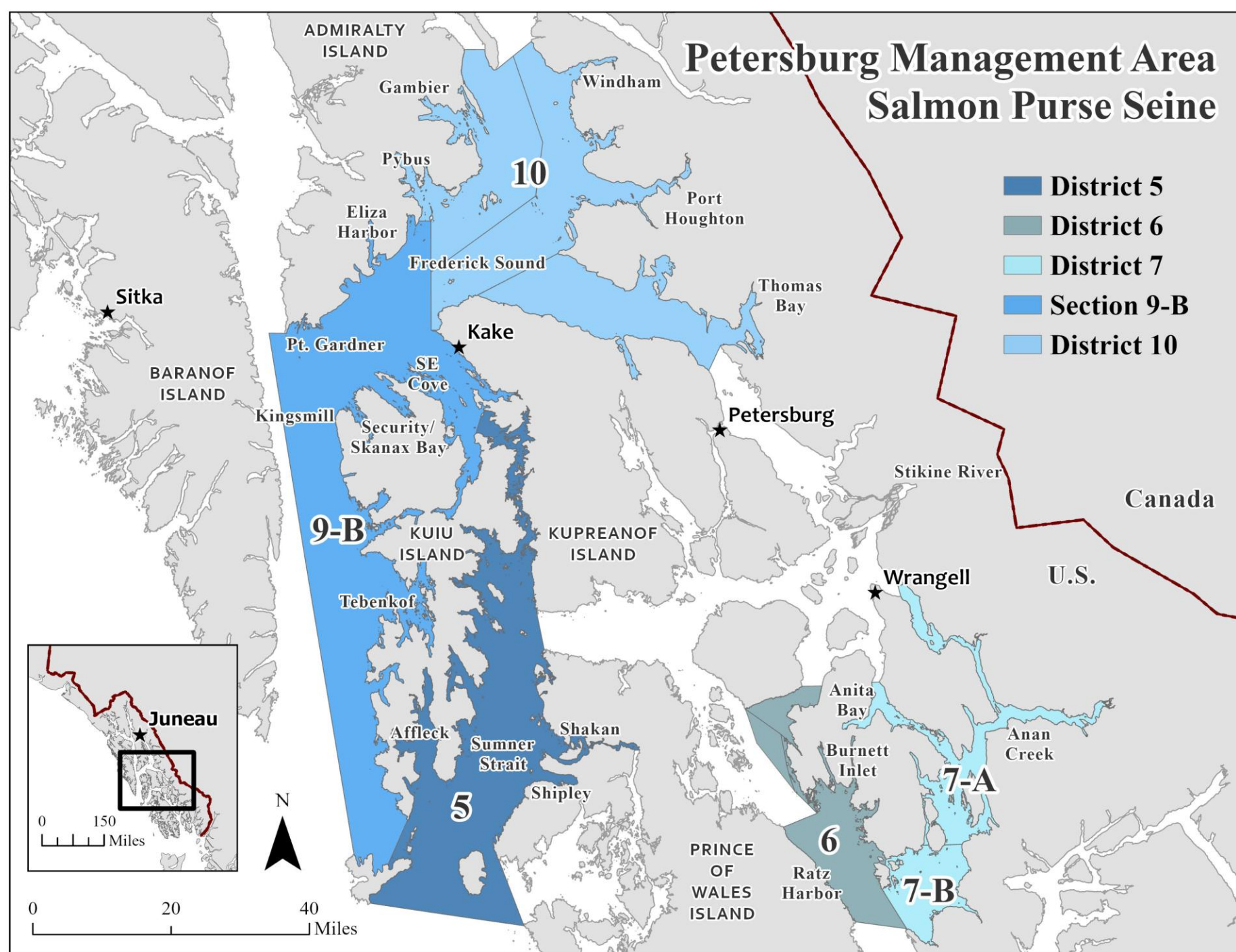


Petersburg Management Area 2025 Salmon Seine Season Summary and 2026 Outlook



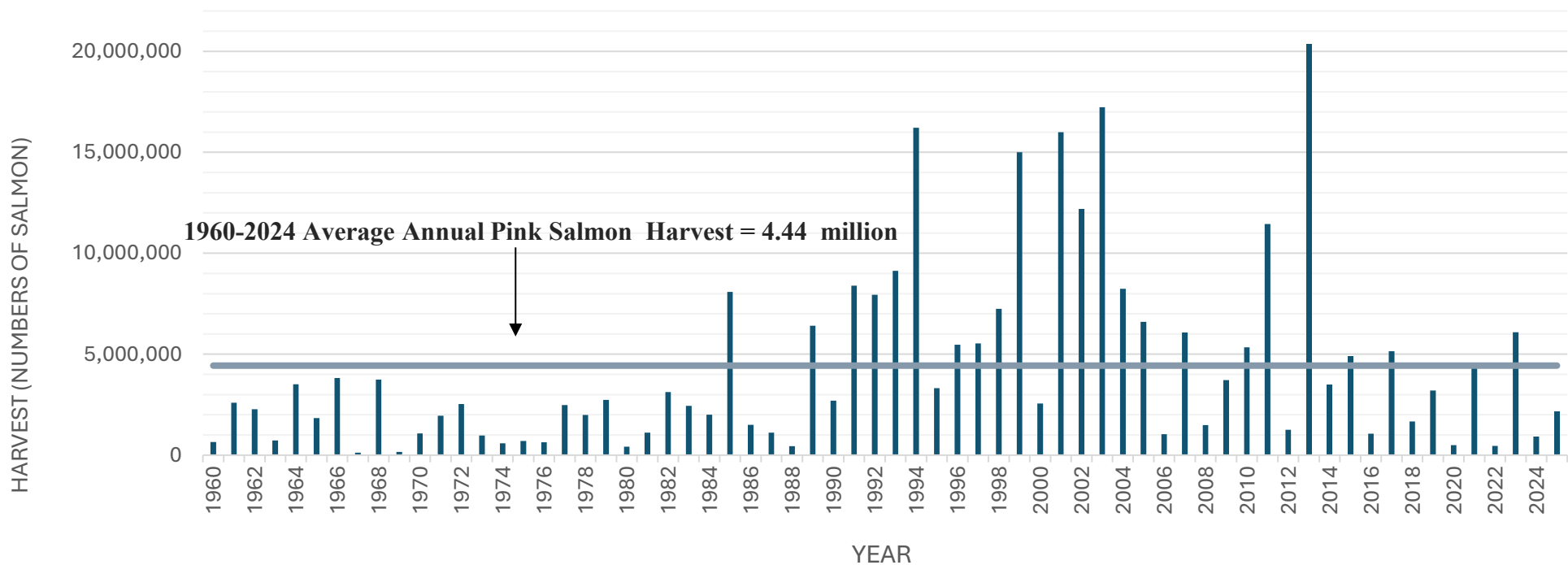
Katie Taylor
Alaska Department of Fish and Game
Purse Seine Task Force Meeting
December 3, 2025

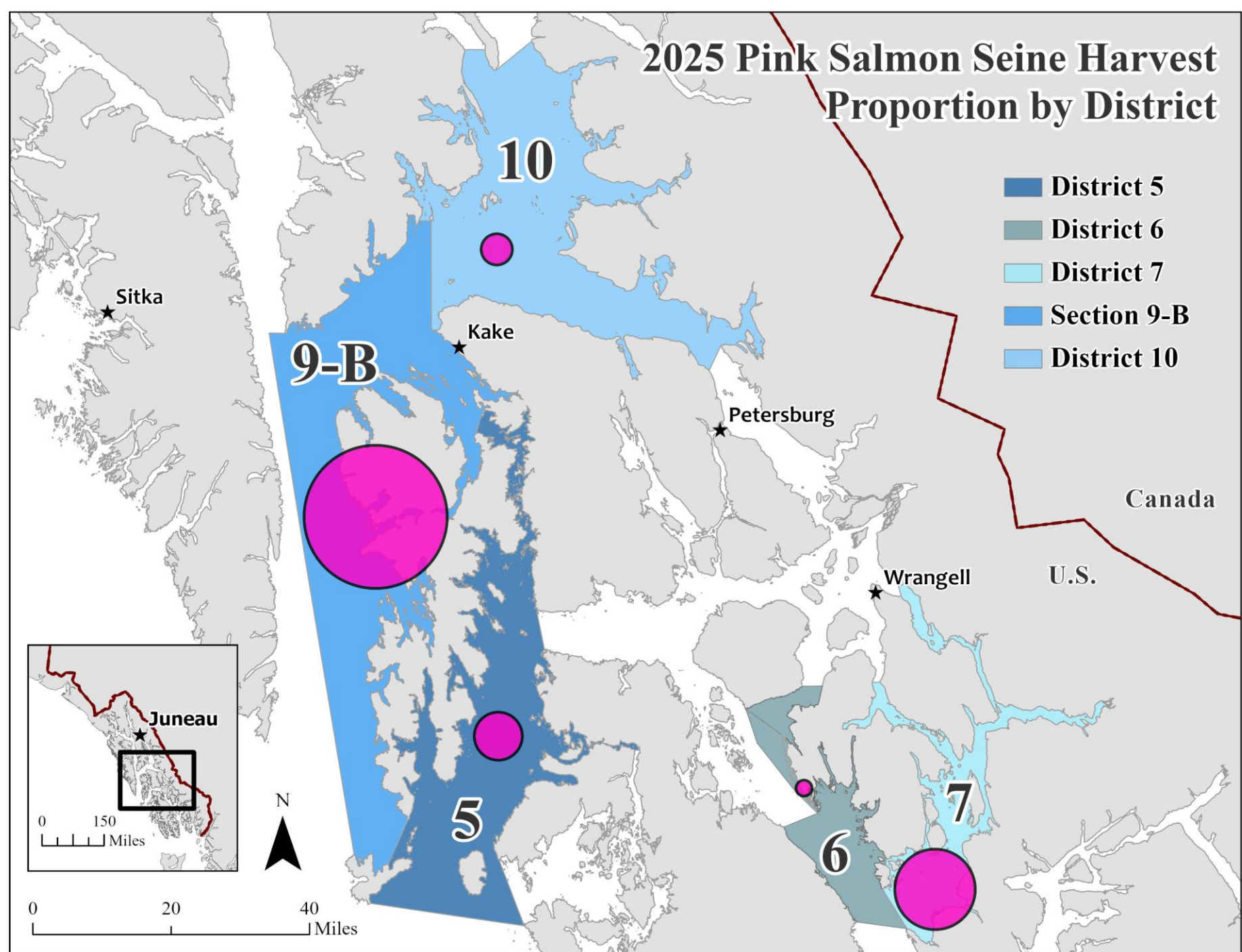
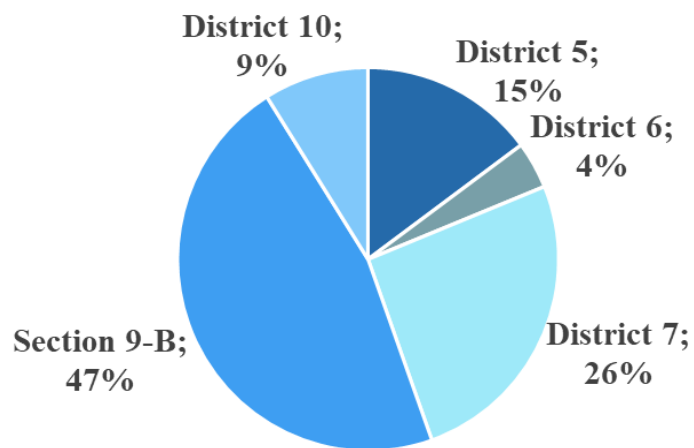


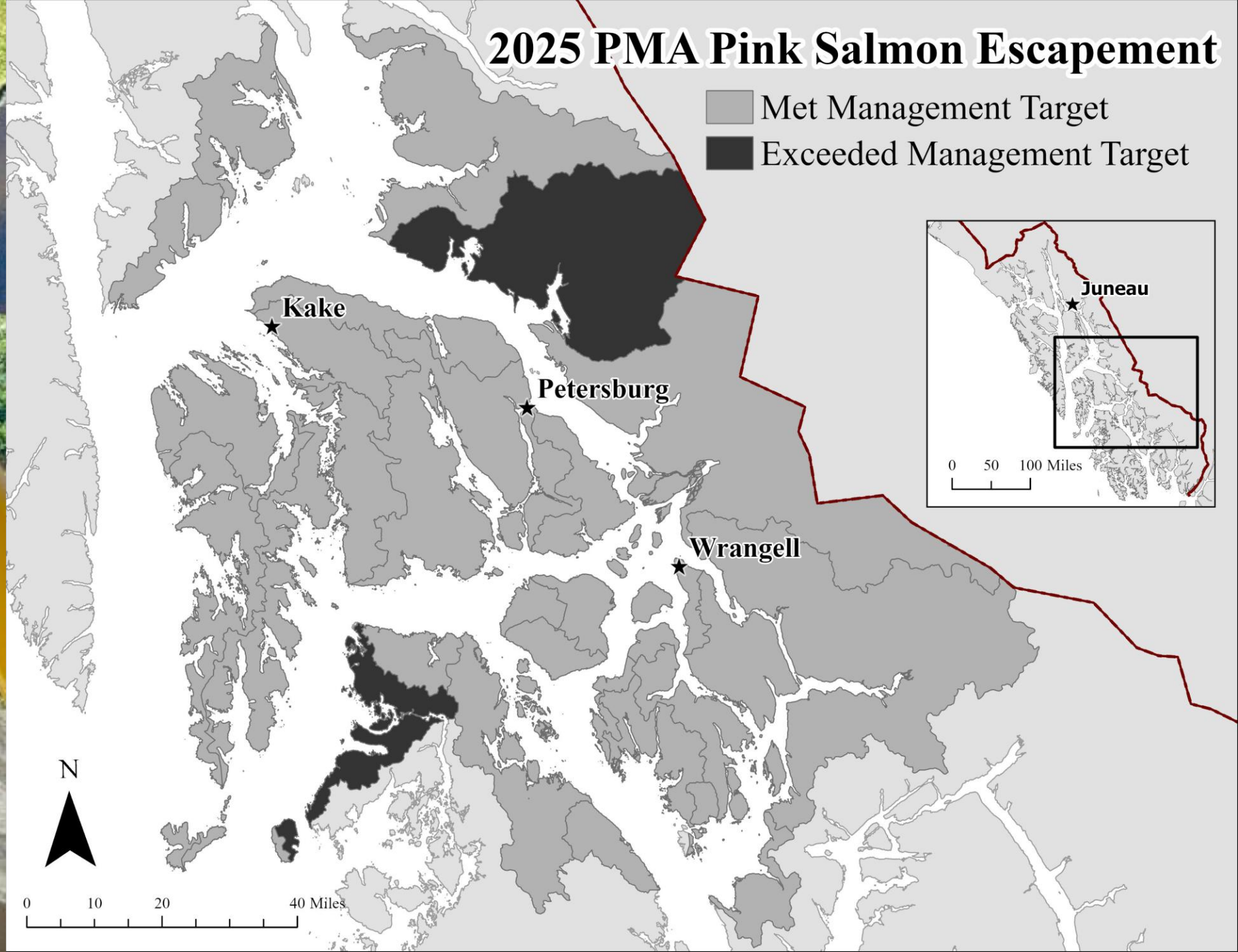


2025 PMA Harvest	Permits Fished	Chinook	Sockeye	Coho	Pink	Chum
District 5	17	7	264	1,549	316,014	6,289
District 6	11	13	902	561	76,209	25,212
District 7	58	36	7,388	2,135	558,817	213,551
Section 9-B	38	16	5,337	18,226	1,027,669	29,720
District 10	16	4	2,281	3,092	191,876	10,905
2025 PMA Total	85	76	16,172	25,563	2,170,585	285,677
10 Year Avg 15-24	96	296	30,599	25,287	3,063,262	225,636
2025 % from Avg	88%	26%	53%	101%	71%	127%

Petersburg Management Area Traditional Common Property Purse Seine Pink Salmon Harvest, 1960-2025



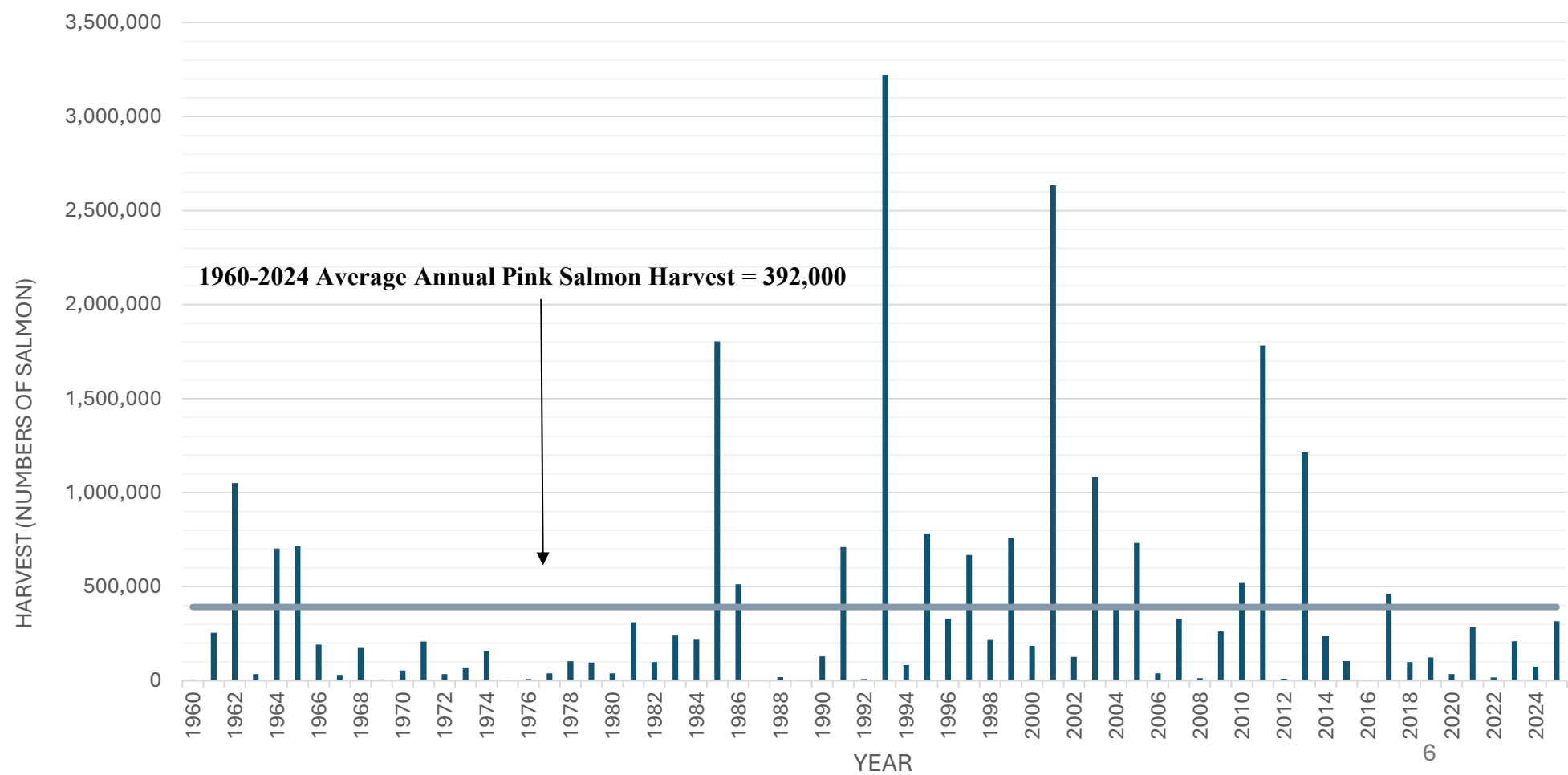






District 5 Harvest	Permits Fished	Chinook	Sockeye	Coho	Pink	Chum
2025	17	7	264	1,549	316,014	6,289
15-24 Avg	10	4	2,250	852	140,842	7,110
2025 % from Avg	177%	194%	12%	182%	224%	88%

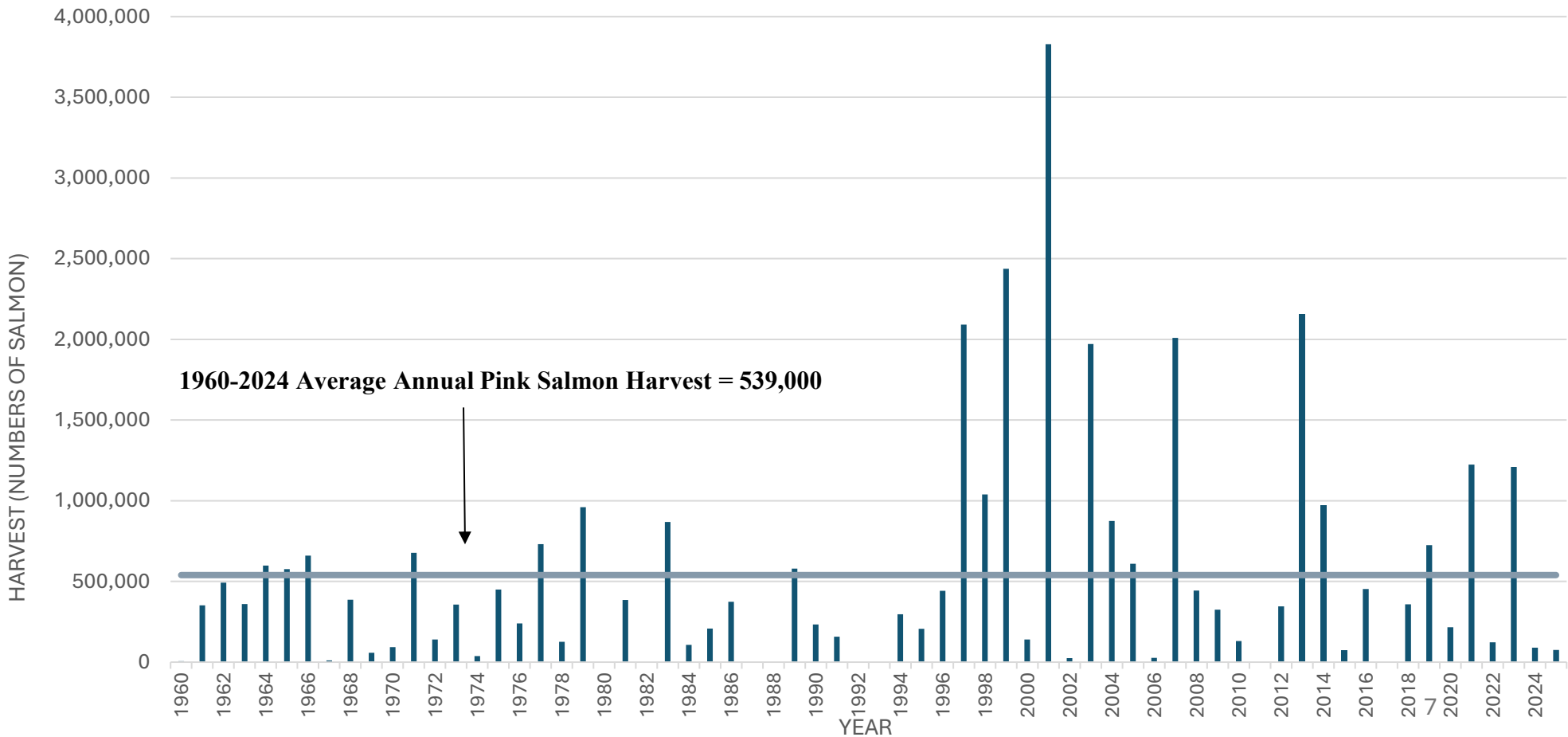
District 5 Annual Purse Seine Harvest of Pink Salmon, 1960-2025





District 6 Harvest	Permits Fished	Chinook	Sockeye	Coho	Pink	Chum
2025	11	13	902	561	76,209	25,212
15-24 Avg	26	24	9,164	5,415	447,104	26,938
2025 % from Avg	42%	54%	10%	10%	17%	94%

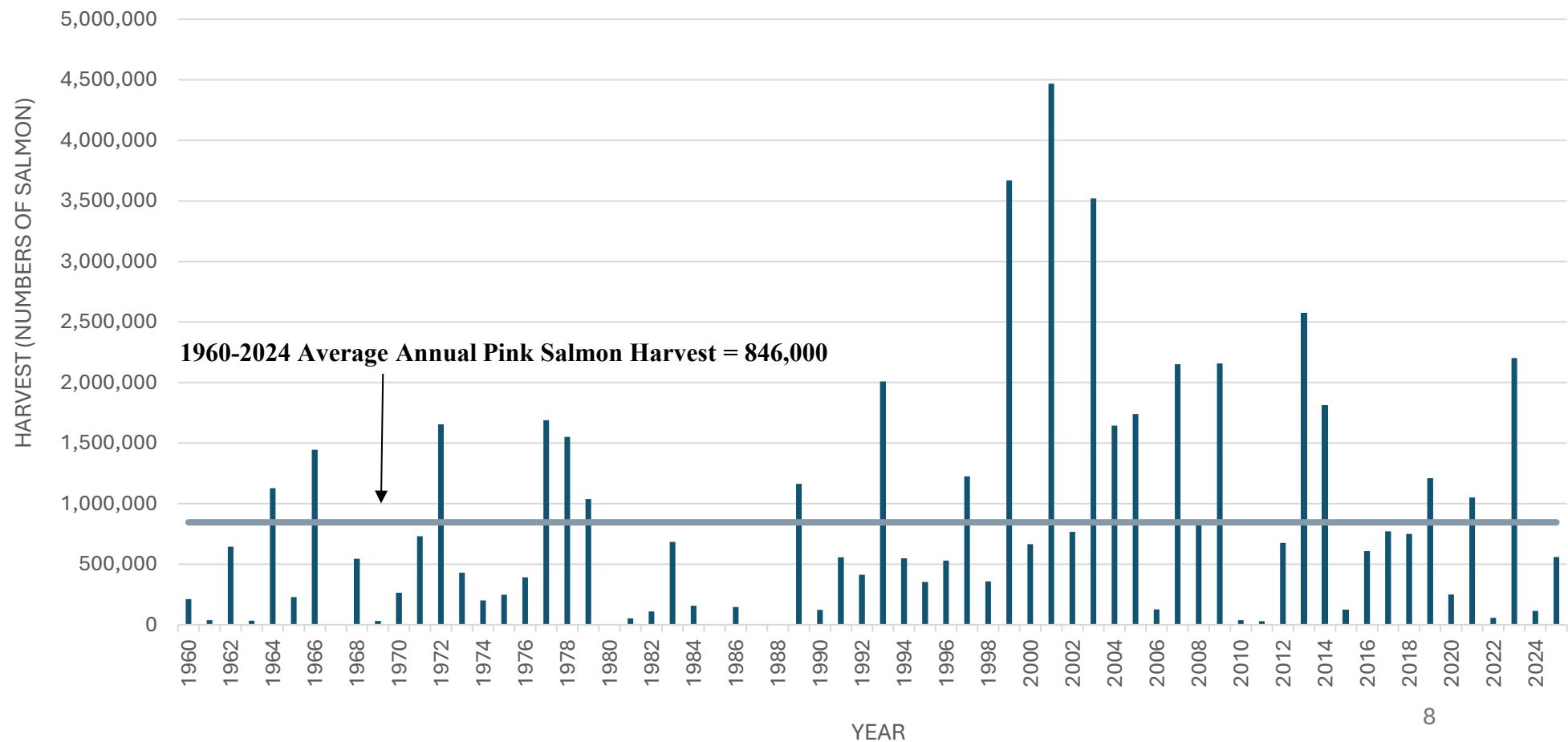
District 6 Annual Purse Seine Harvest of Pink Salmon, 1960-2025





District 7 Harvest	Permits Fished	Chinook	Sockeye	Coho	Pink	Chum
2025	58	36	7,388	2,135	558,817	213,551
15-24 Avg	57	155	7,091	2,970	713,730	124,889
2025 % from Avg	102%	23%	104%	72%	78%	171%

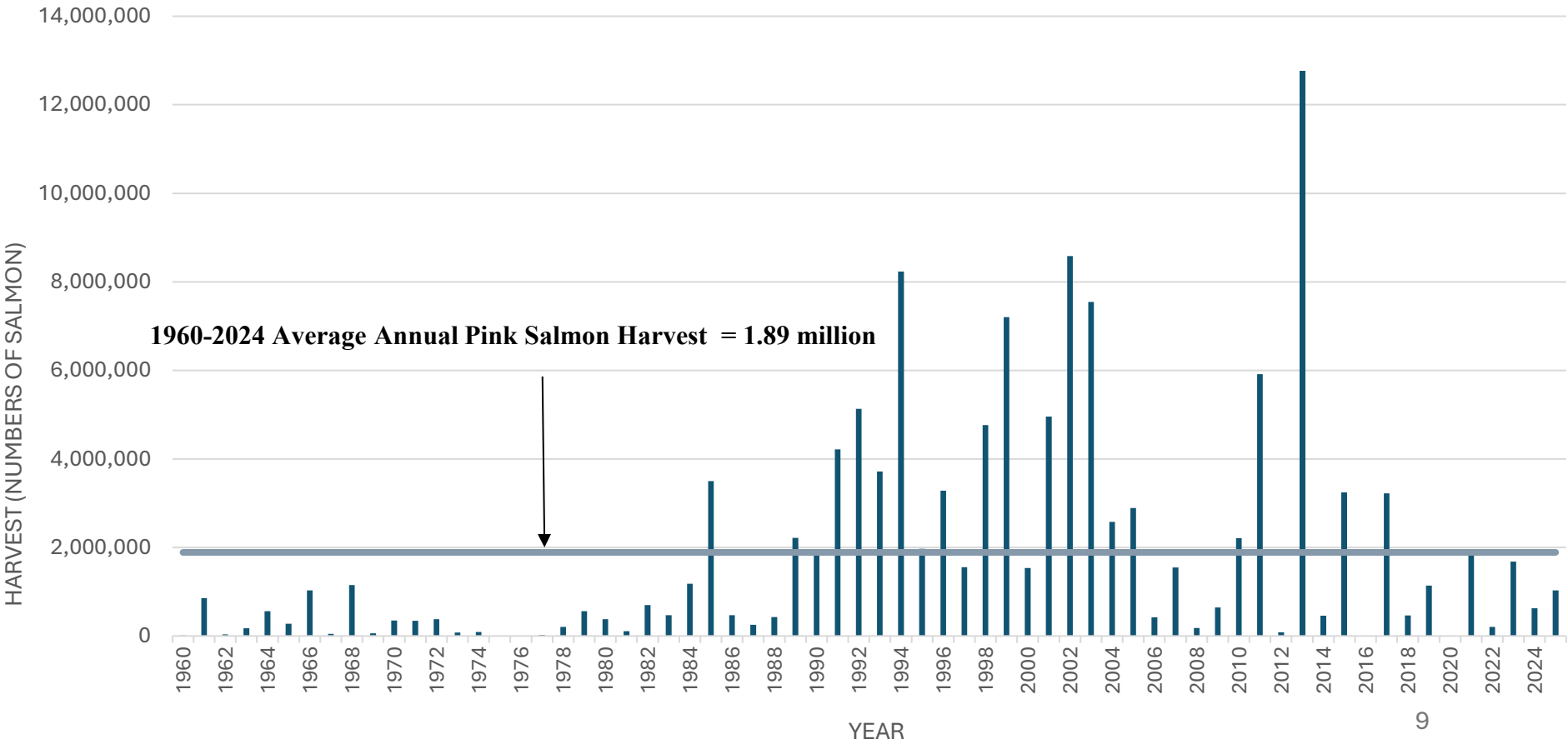
District 7 Annual Purse Seine Harvest of Pink Salmon, 1960-2025





Section 9-B Harvest	Permits Fished	Chinook	Sockeye	Coho	Pink	Chum
2025	38	16	5,337	18,226	1,027,669	29,720
15-24 Avg	41	82	7,862	12,055	1,253,857	41,298
2025 % from Avg	92%	20%	68%	151%	82%	72%

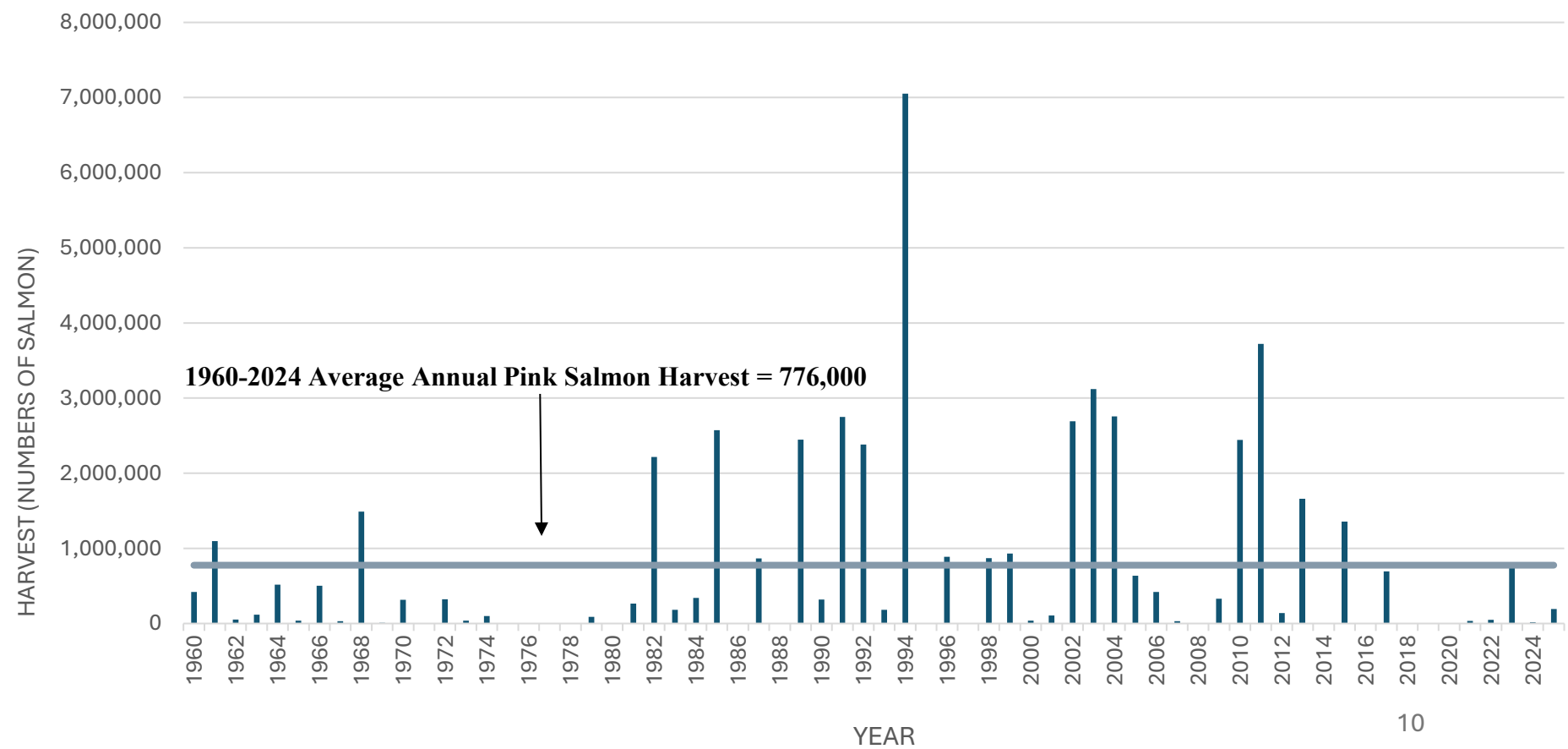
Section 9-B Annual Purse Seine Harvest of Pink Salmon, 1960-2025





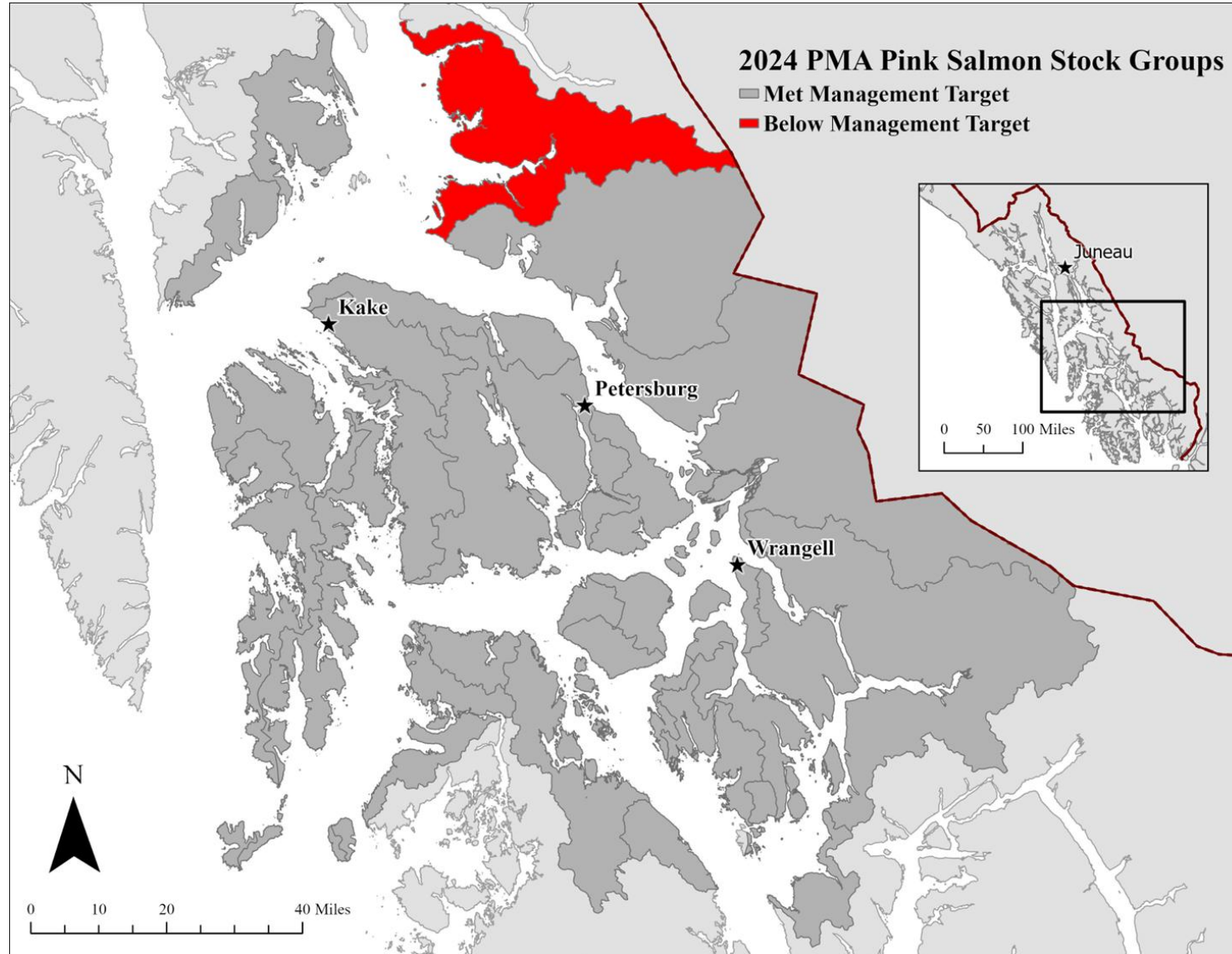
District 10 Harvest	Permits Fished	Chinook	Sockeye	Coho	Pink	Chum
2025	16	4	2,281	3,092	191,876	10,905
15-24 Avg	15	8	2,152	2,486	294,002	10,027
2025 % from Avg	108%	53%	106%	124%	65%	109%

District 10 Annual Purse Seine Harvest of Pink Salmon, 1960-2025



2026 Expectations

In 2024, all stock groups in the PMA met escapement except for one



2026 PMA Opening Expectations

Primarily based on inseason observations of abundance. However, ...

District 5

- Expected first opening is late July or early August.

District 6

- Expected first opening is late July or early August.

District 7

- 7-A: Expected opening is early July.
- 7-B: Expected opening is late July or early August.

Section 9-B

- Expected opening is late July.

District 10

- Expected opening is mid to late July.

Questions?

