

Subsistence Harvest of Herring Eggs in Sitka Sound



2023 2-hr notice meeting
March 21, 2023

Lauren Sill
Division of Subsistence
Alaska Department of Fish and Game



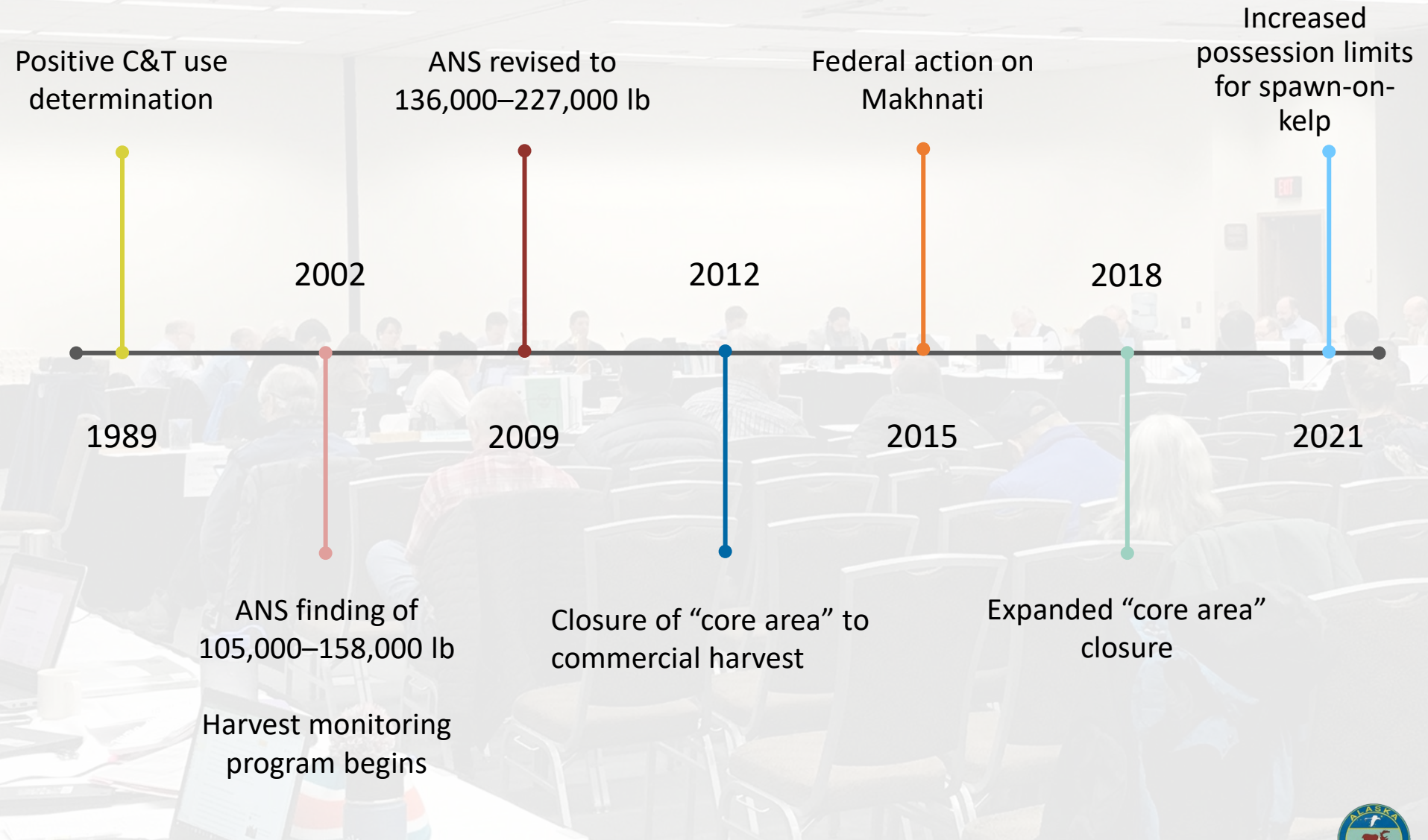
Outline of Presentation

- Regulatory history
- Harvest assessment program
- 2022 survey results
- 2023 survey planning



Board of Fisheries Actions

3



Harvest Monitoring Program

4

HERRING EGG SUBSISTENCE HARVEST SURVEY SITKA, ALASKA 2019

This survey is used to estimate subsistence harvests of herring eggs from Sitka Sound and to describe community subsistence economies. We will publish a summary report which will be available to all households in your community. We share this information with the Sitka Tribe of Alaska, the Alaska Department of Fish and Game, the U.S. Fish and Wildlife Service and the National Park Service. We work with the Federal Regional Advisory Councils and with local Fish and Game Advisory Committees to better manage subsistence, and to implement federal and state subsistence priorities.

This project is guided by the research principles adopted by the Alaska Federation of Natives in 1993. We will NOT identify your household. We will NOT use this information for enforcement. Participation in this survey is voluntary. Even if you agree to be surveyed, you may stop at any time.

HOUSEHOLD ID:	
COMMUNITY ID:	Sitka 313
INTERVIEWER:	
INTERVIEW DATE:	
DATA CODED BY:	
DATA ENTERED BY:	
SUPERVISOR:	



- To conduct in-person interviews with households who harvest herring spawn;
- To produce estimates of the total pounds of herring spawn harvested on hemlock branches, Macrocystis kelp, hair seaweed and “other” substrates; and,
- To identify locations where herring spawn are harvested.



COOPERATING ORGANIZATIONS

RESOURCE PROTECTION DEPARTMENT
SITKA TRIBE OF ALASKA
429 KATLIAN STREET
SITKA, AK 99835

907-747-7188

DIVISION OF SUBSISTENCE
ALASKA DEPT OF FISH & GAME
802 3RD STREET
JUNEAU, AK 99801

907-465-3617



Conversion Factors

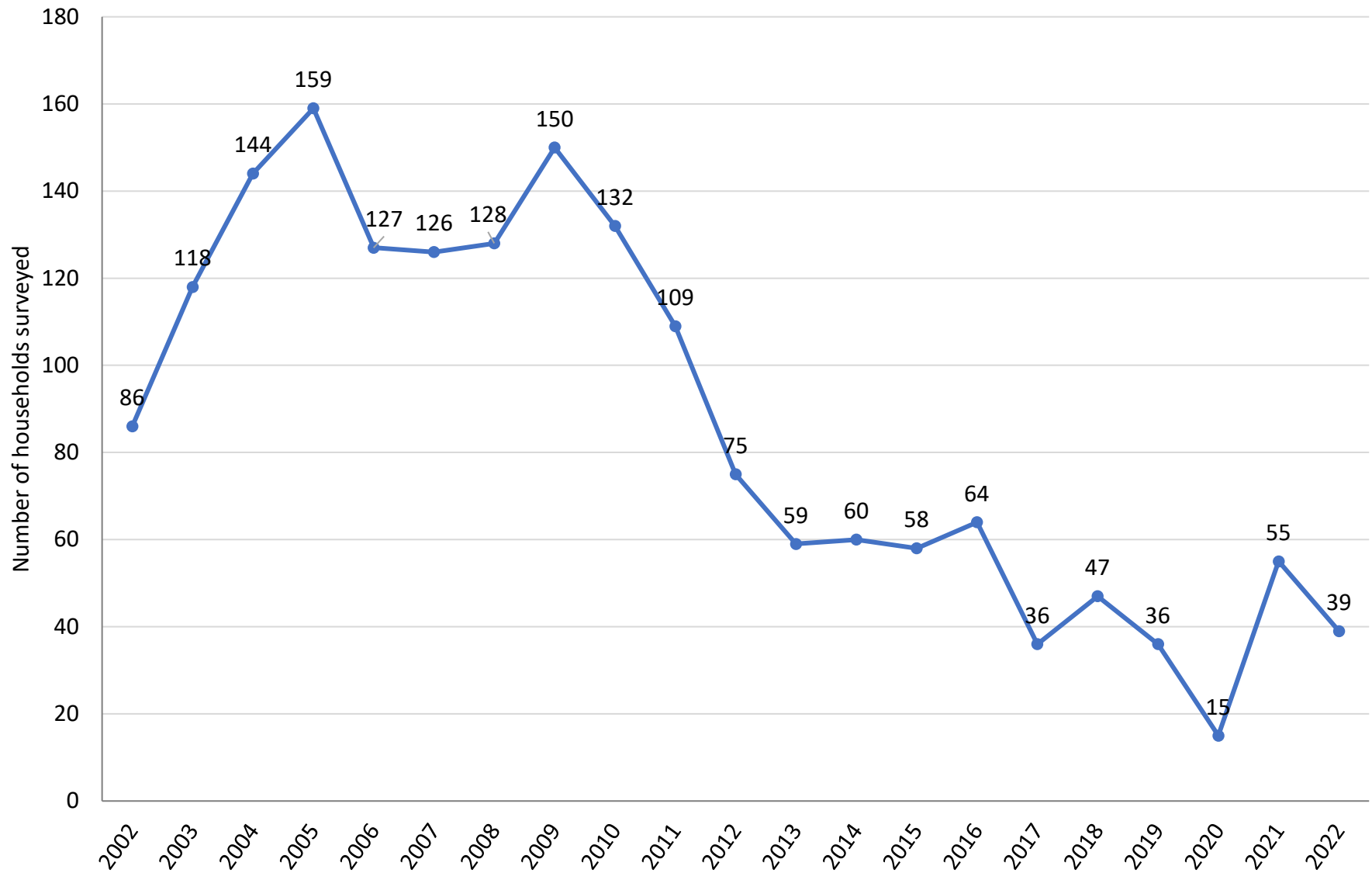
5

- Determining harvest weights
 - STA and the department work together to develop a set of conversion factors.
 - Apply to most common types of containers.
 - Average weights developed through multiple measurements.

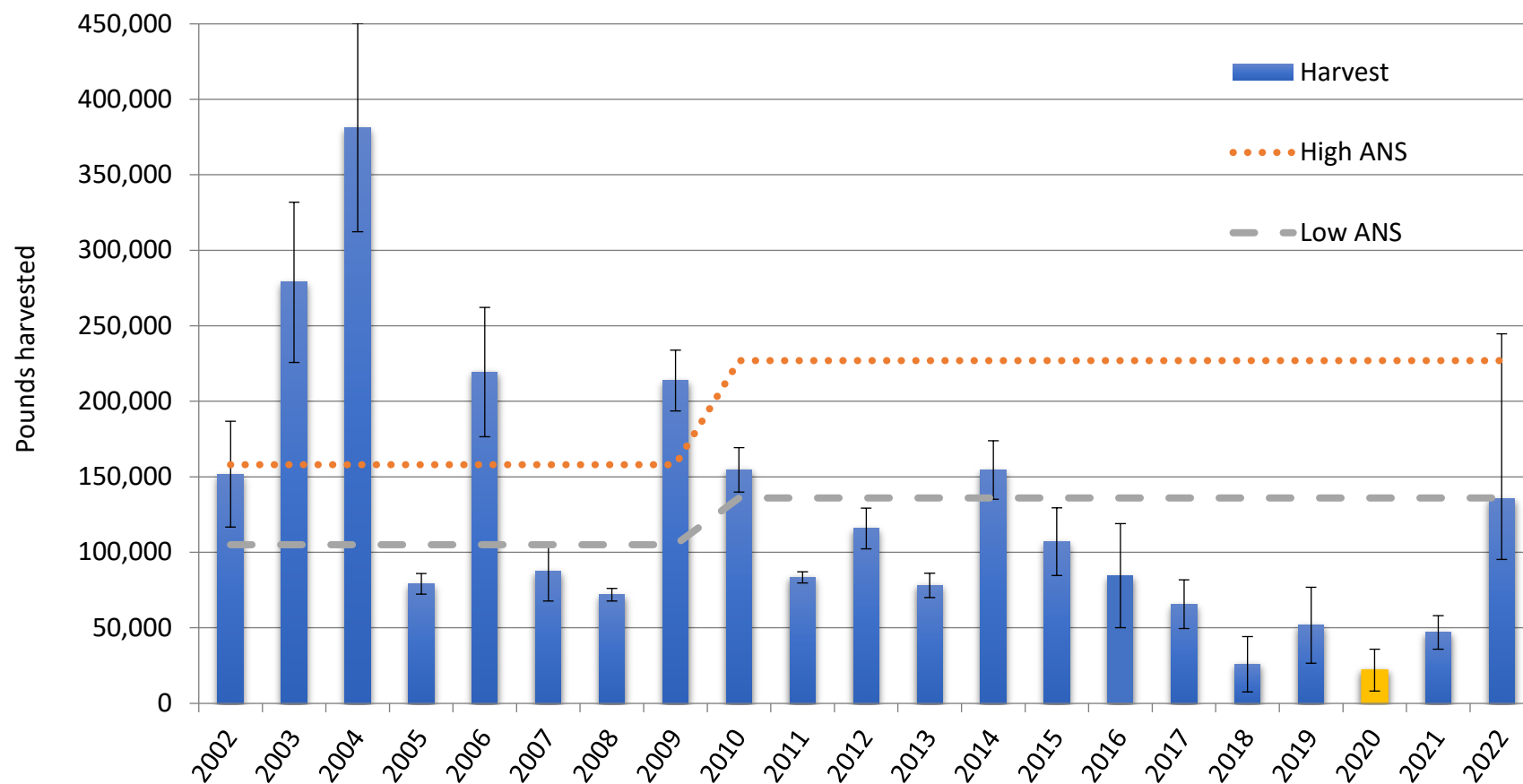


Survey Sample Achievement

6



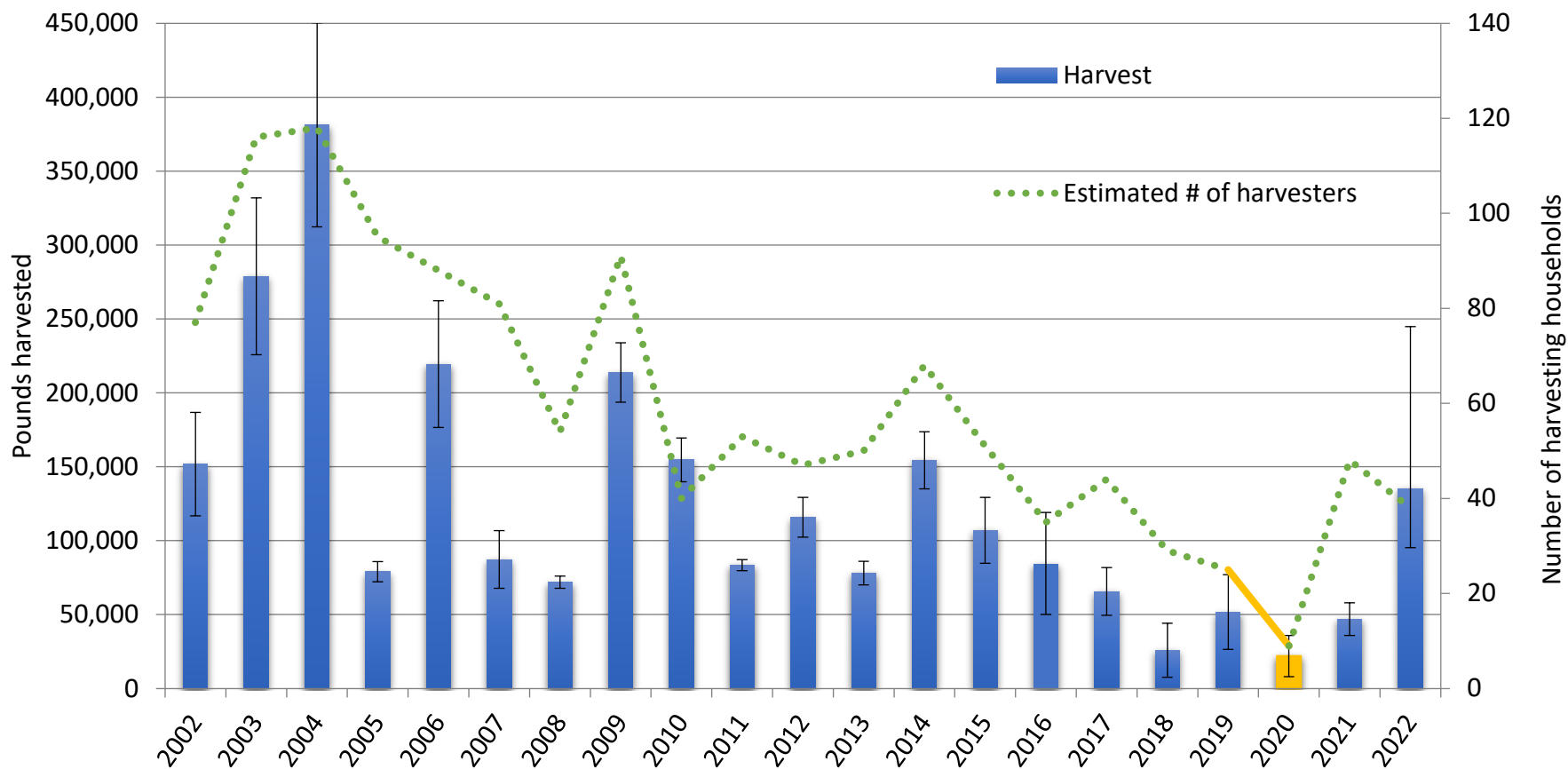
Estimated Harvest



Note The bar depicting the 2020 harvest is yellow because the 2020 harvest year was affected by the COVID-19 pandemic.

Total pounds useable weight and amount necessary for subsistence (ANS) of herring spawn on all substrates in Sitka Sound, 2002–2022.

Harvest Effort



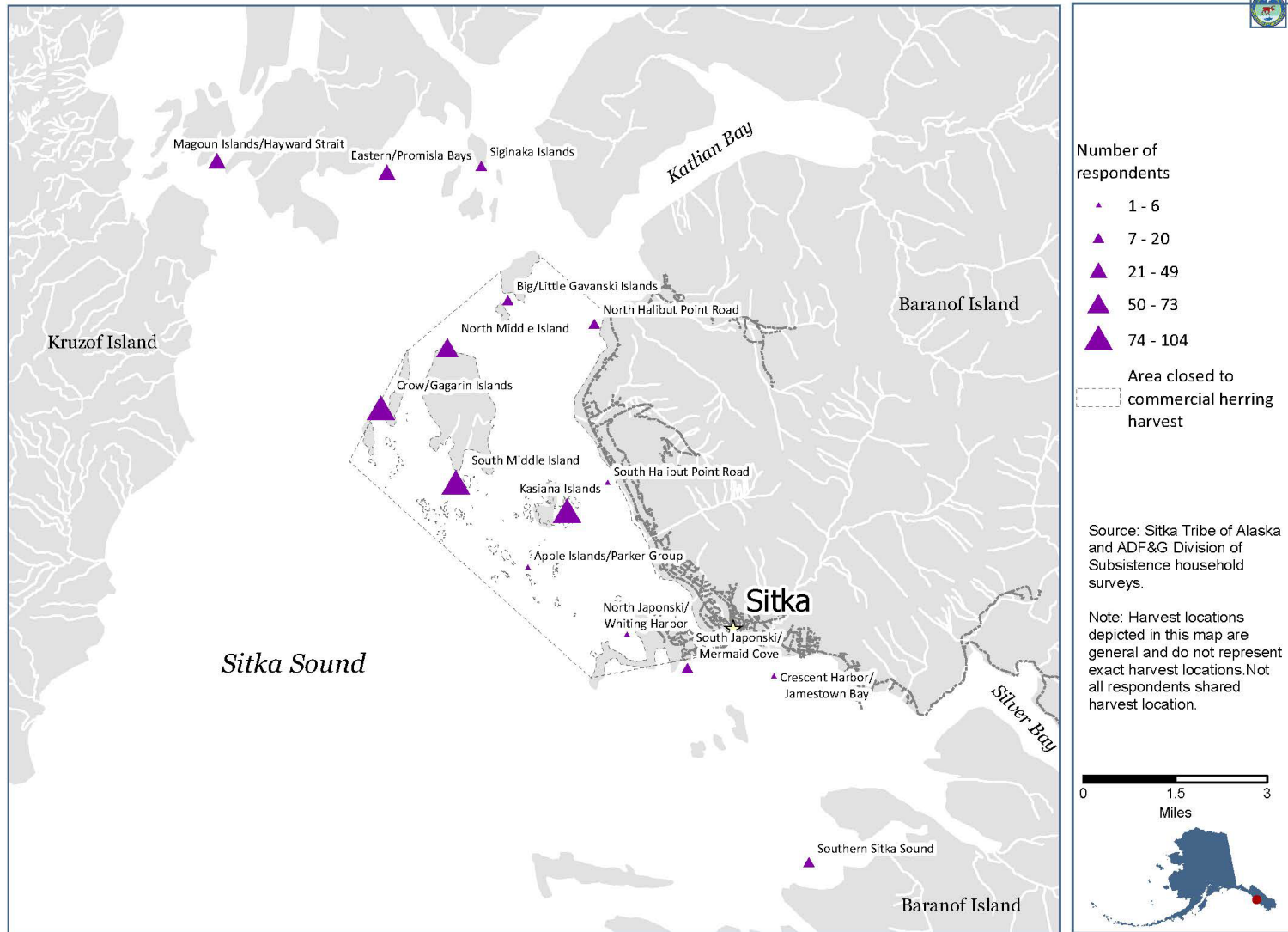
Note The line and bar depicting change in "estimated number of harvesters" between 2019 and 2020 and the 2020 harvest are yellow because the 2020 harvest year was affected by the COVID-19 pandemic.

Total pounds useable weight and number of subsistence harvesters in Sitka Sound, 2002–2021.

Harvest Locations, 2011–2022

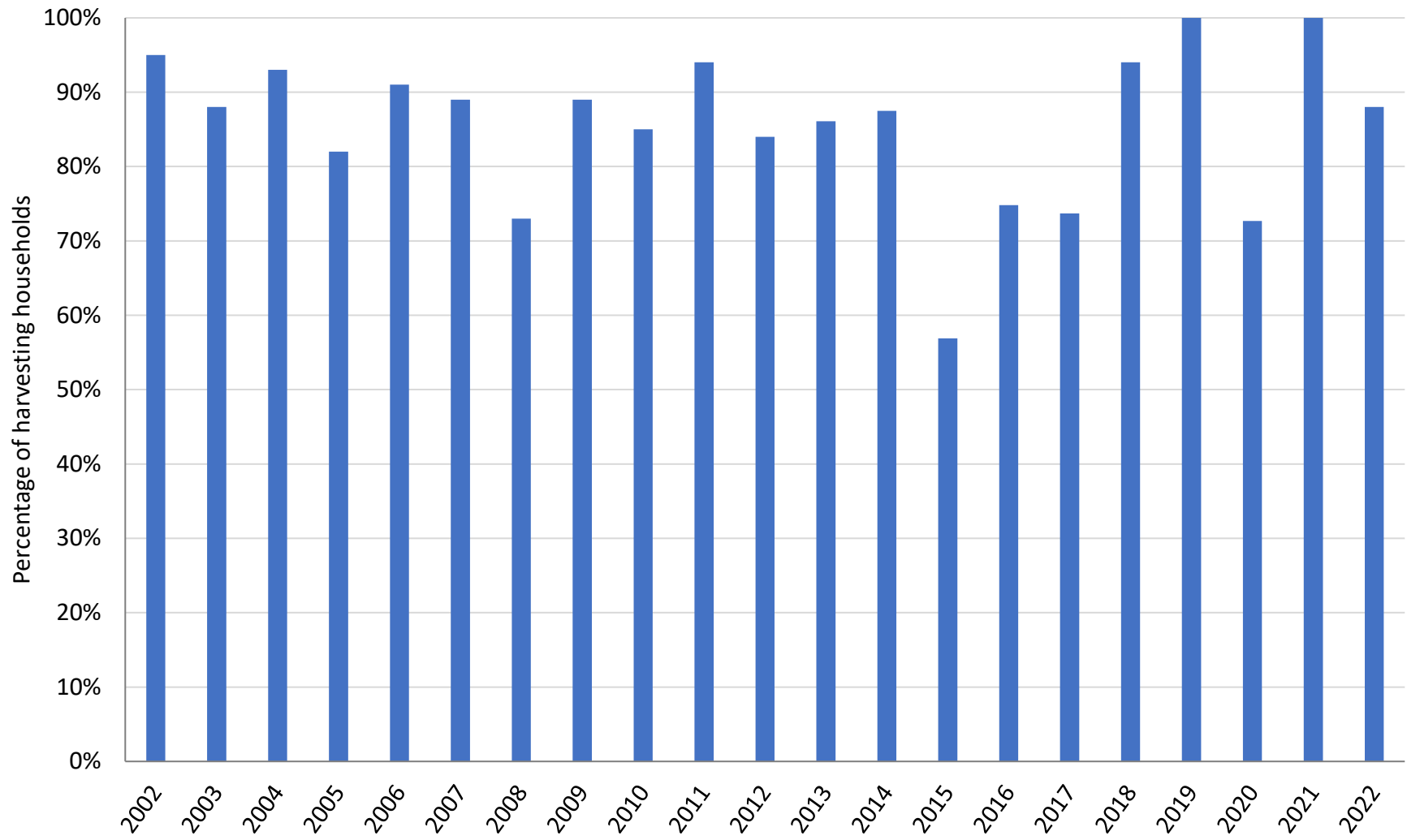
9

DIVISION OF SUBSISTENCE - ALASKA DEPARTMENT OF FISH AND GAME



Sharing Herring Eggs, 2002–2022

10



Percent of harvesting households giving away herring eggs, 2002–2022



Sharing Herring Eggs, 2010–2022

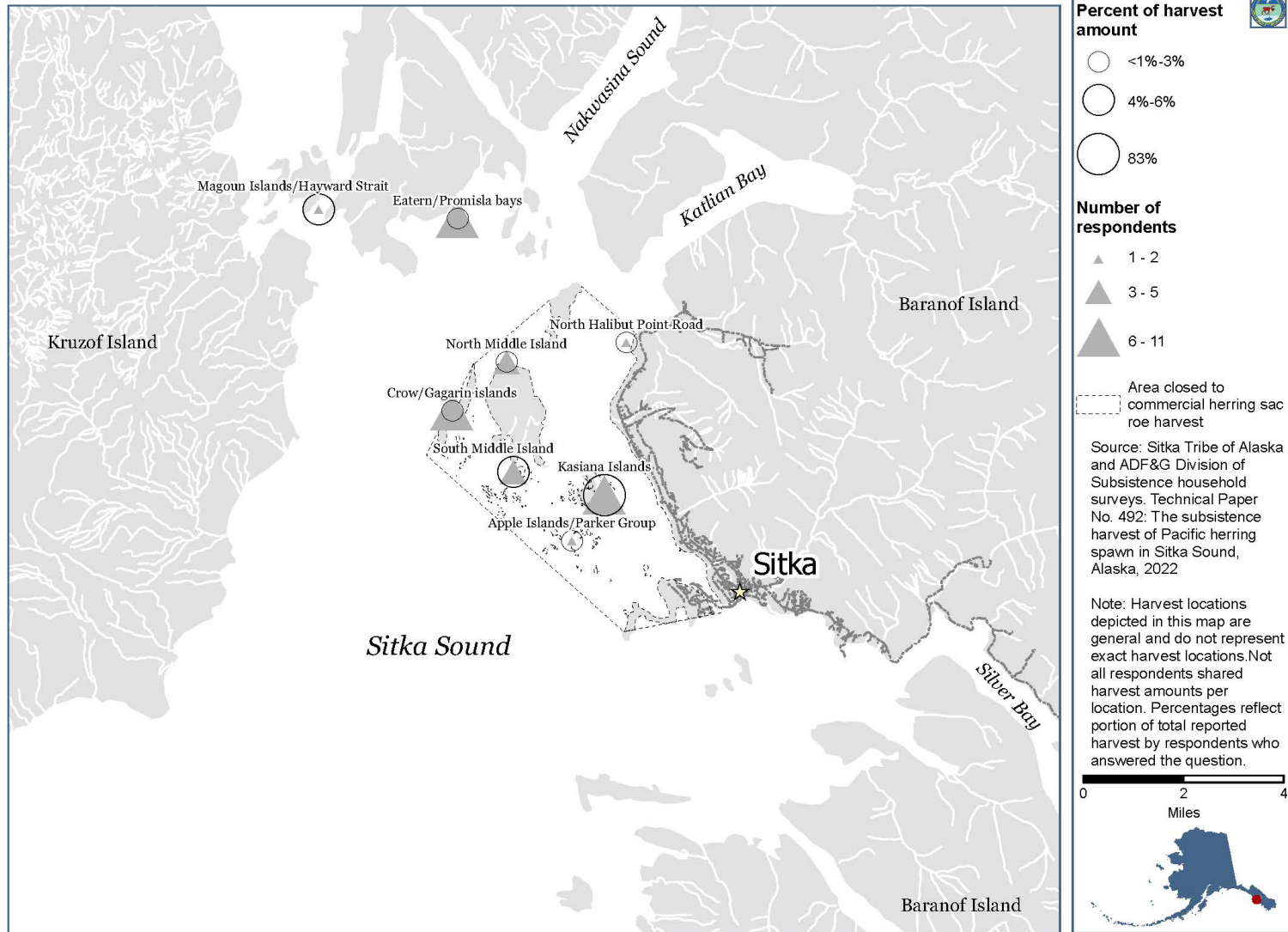
11

Region	Frequency of sharing
Southeast	139
Arctic	21
Yukon-Kuskokwim Delta	19
Mat-Su	14
Outside Alaska	14
Interior	9
Kenai Peninsula	7
Bristol Bay	4
Aleutians	3
Prince William Sound	2

Harvest Locations, 2022

12

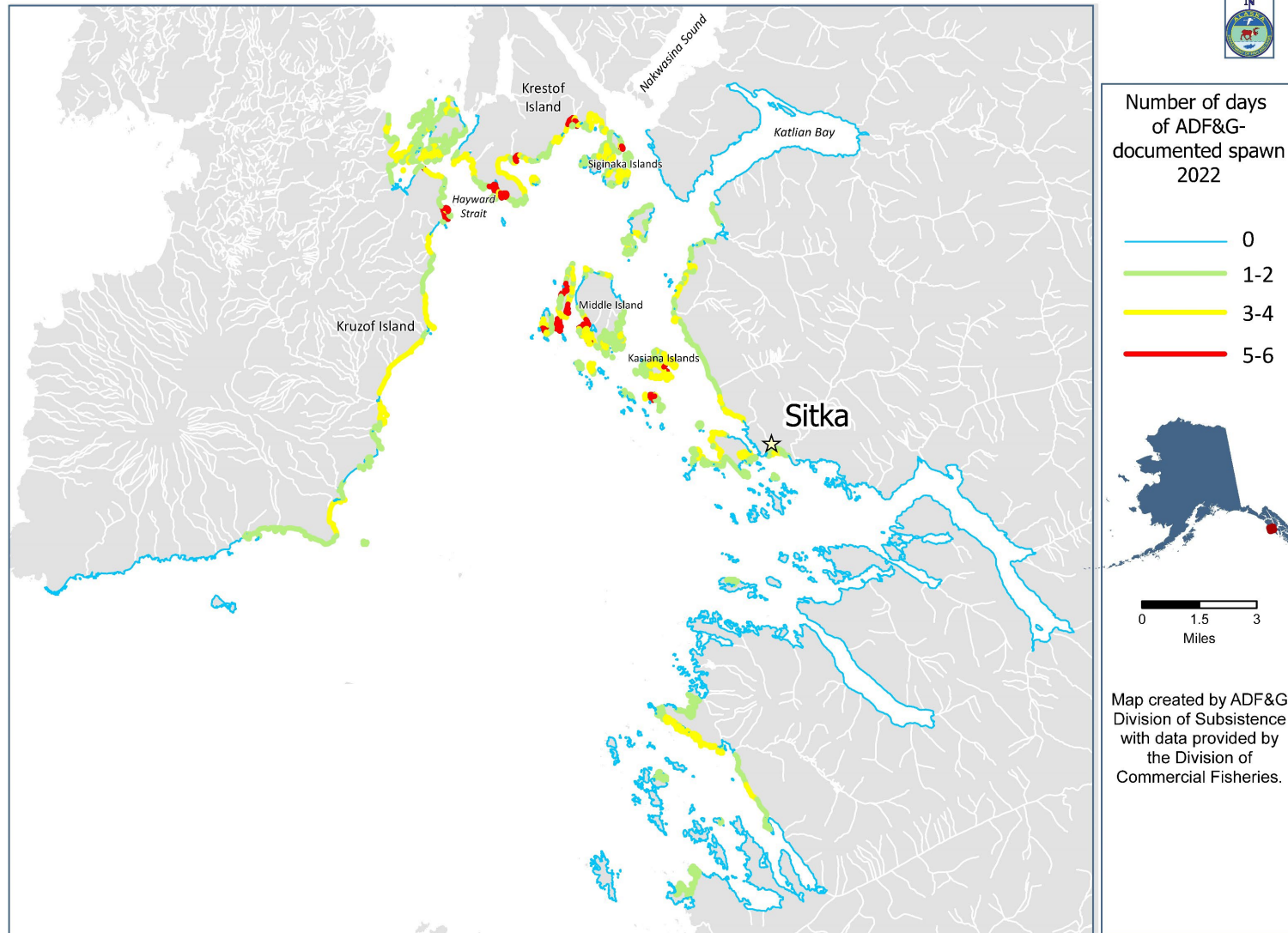
DIVISION OF SUBSISTENCE - ALASKA DEPARTMENT OF FISH AND GAME



Spawning Days, 2022

13

DIVISION OF SUBSISTENCE - ALASKA DEPARTMENT OF FISH AND GAME



Herring Spawn Harvest by Substrate

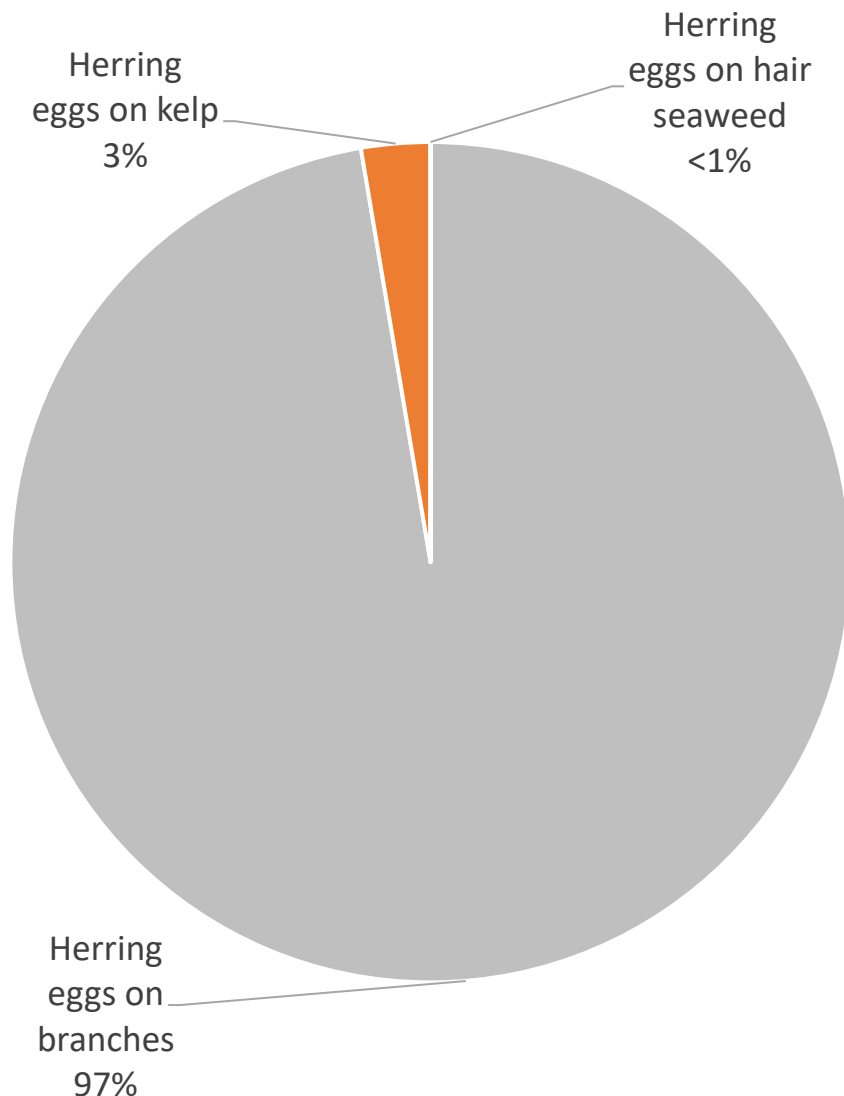
14

	Total pounds
Herring spawn - all types	135,231

Herring spawn on hemlock branches 131,638

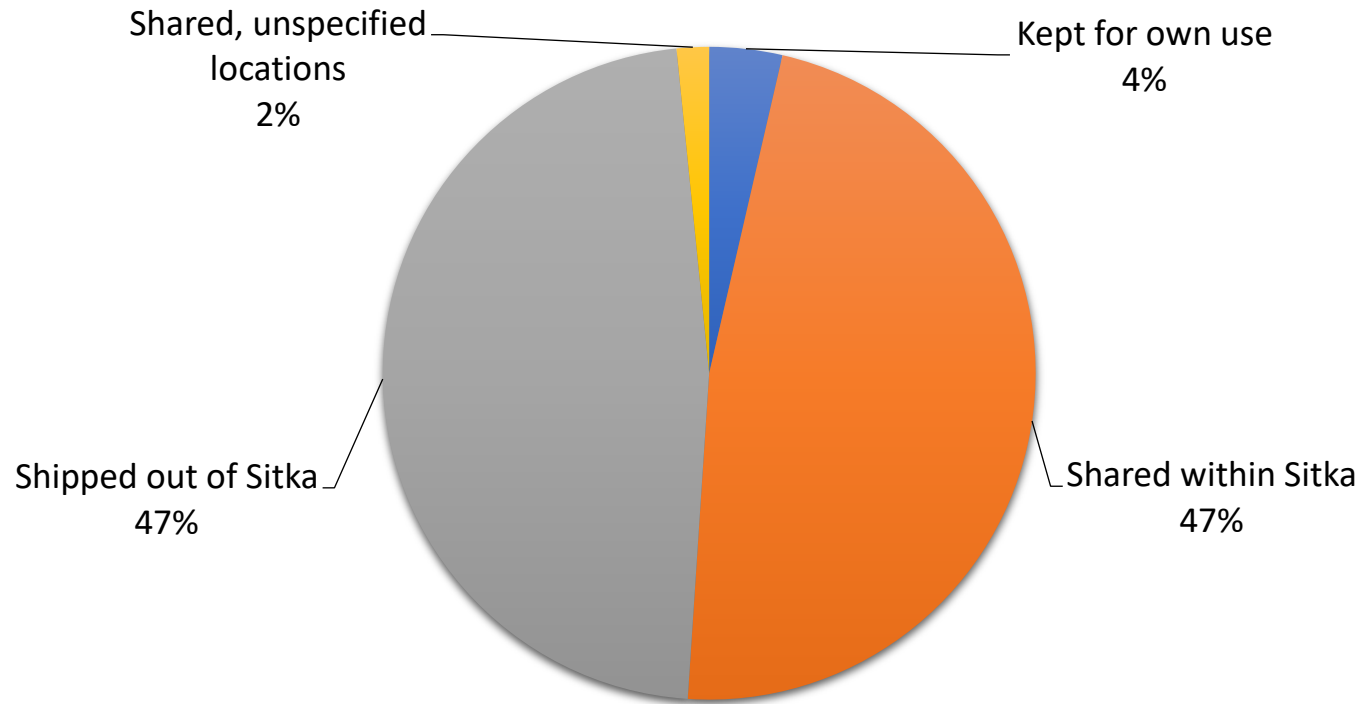
Herring spawn on kelp	3,589
-----------------------	-------

Herring spawn, hair seaweed 3



Distribution of Harvest

15



	Kept for own use	Shared within Sitka	Shipped out of Sitka	Shared, unspecified
Herring spawn - all types	4%	47%	47%	2%
Herring spawn on hemlock branches	3%	47%	49%	2%
Herring spawn on kelp	14%	83%	3%	0%
Herring spawn, hair seaweed	100%	0%	0%	0%



What size vessel did households use to harvest herring spawn in 2022?

Number of households responding	less than 20 feet	20 to 24 feet	Over 24 feet	Commercial vessel	Other	No boat used - harvested from shore
24	54%	33%	4%	21%	0%	0%

Number of households that harvesting households usually harvest for, 2021

Number of households responding	One	Two to five	Six to ten	Eleven to fifty	Fifty-one to one hundred	Over one hundred
22	0%	41%	23%	5%	5%	23%

Assessments

Q: Did you get enough herring eggs for your own household? Did you get enough to meet your needs for sharing?

	Number of households responding	Yes	No
For own household:	20	90.0%	10.0%
To share:	19	78.9%	21.1%

Q: Were you asked for eggs that you could not supply?

Number of households responding	Yes	No
21	23.8%	76.2%

Project Timeline

18

- 2023 project
- April through June: Harvester surveys
- June through September: Data analysis
- October through November: Report writing
- December 2023: Report publication



How You Can Help

19



- Sign up to be surveyed.
- Keep your shipping bills.
- Help identify other harvesters, local and non-local.