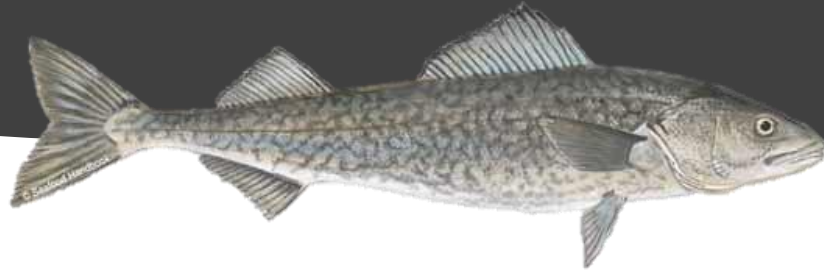


2021 Sablefish Industry Meeting



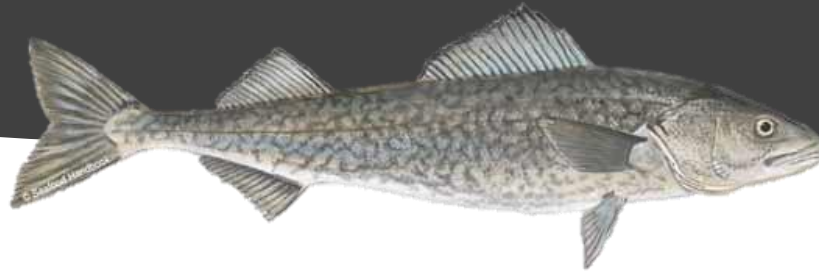
Welcome!



NOAA
FISHERIES

Sablefish Industry Meeting
April 30, 2021

Introduction



ADF&G Staff:

Rhea Ehresmann

Andrew Olson

NOAA Staff:

Jane Sullivan

Dan Goethel

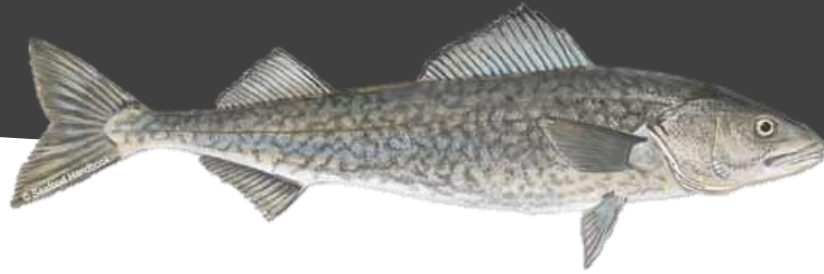
Chris Lunsford

Cindy Tribuzio



NOAA
FISHERIES

Agenda



NSEI Chatham Strait (Jane Sullivan, NOAA/filling in for ADF&G)

Fishery & survey data review

Outlook for 2021

SSEI Clarence Strait (Rhea Ehresmann, ADF&G)

Fishery & survey data review

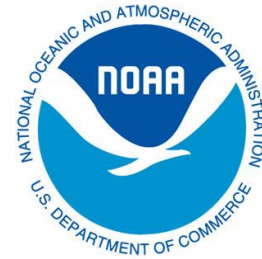
Outlook for 2021

BOF Updates (Rhea Ehresmann/Andrew Olson, ADF&G)

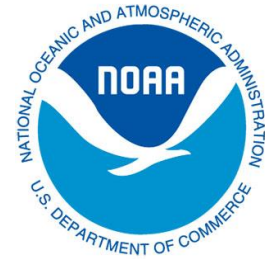
GOA Federal Sablefish Assessment (Dan Goethel/Chris Lunsford, NOAA)

Sleeper Shark Project (Cindy Tribuzio, NOAA)





NOAA
FISHERIES



NOAA
FISHERIES

NSEI sablefish data review and outlook for 2021



Sablefish Industry Meeting

April 30, 2021

Jane Sullivan (jane.sullivan@noaa.gov)

Rhea Ehresmann

Andrew Olson

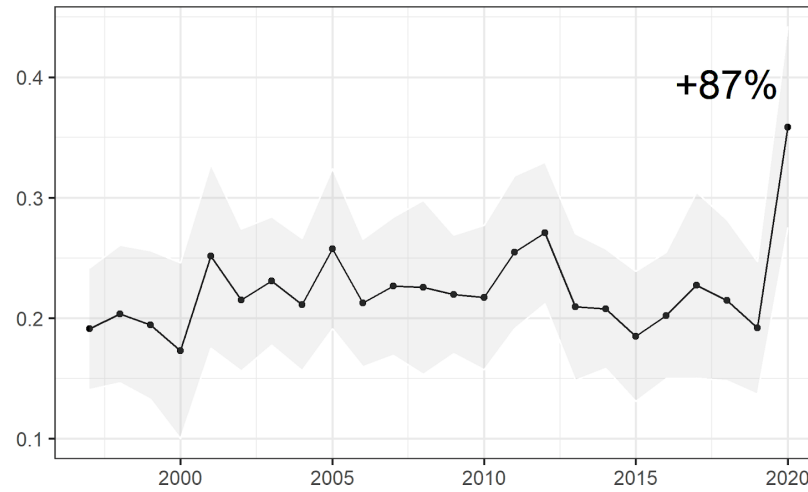
Key points

- Mixed signals: Longline survey CPUE way up, but mark-recapture abundance slightly down
- Low 2020 ex-vessel value
- Assessment still in progress



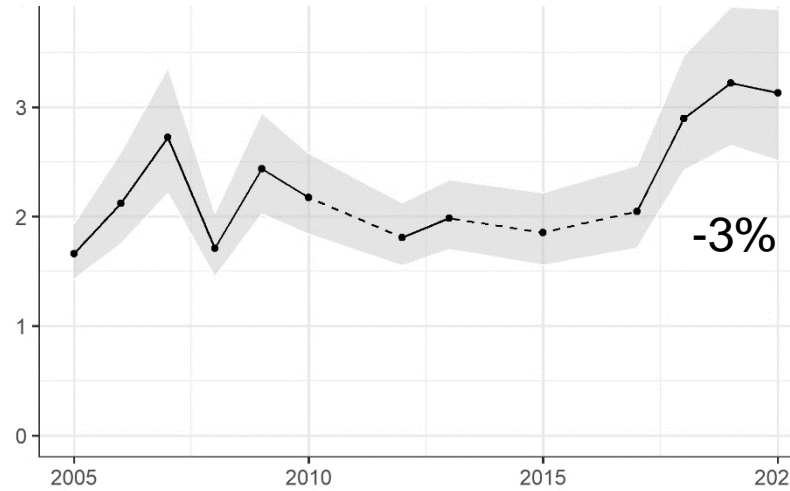
Abundance trends

Longline survey CPUE (#/hook)



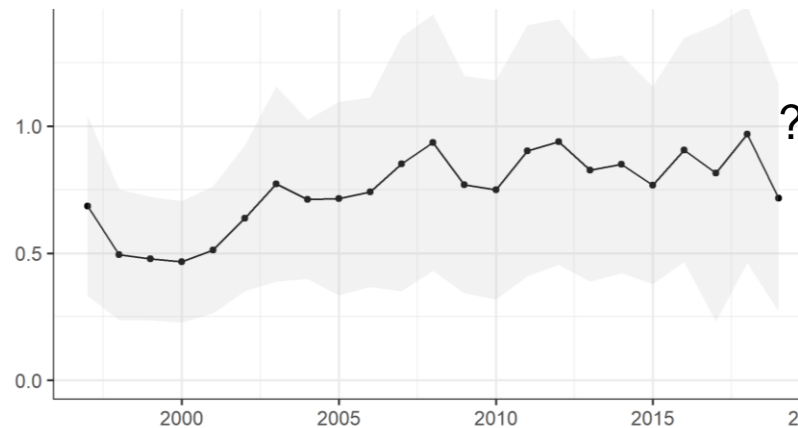
Unprecedented spike in survey CPUE

Mark-recapture exploitable abundance (Millions)



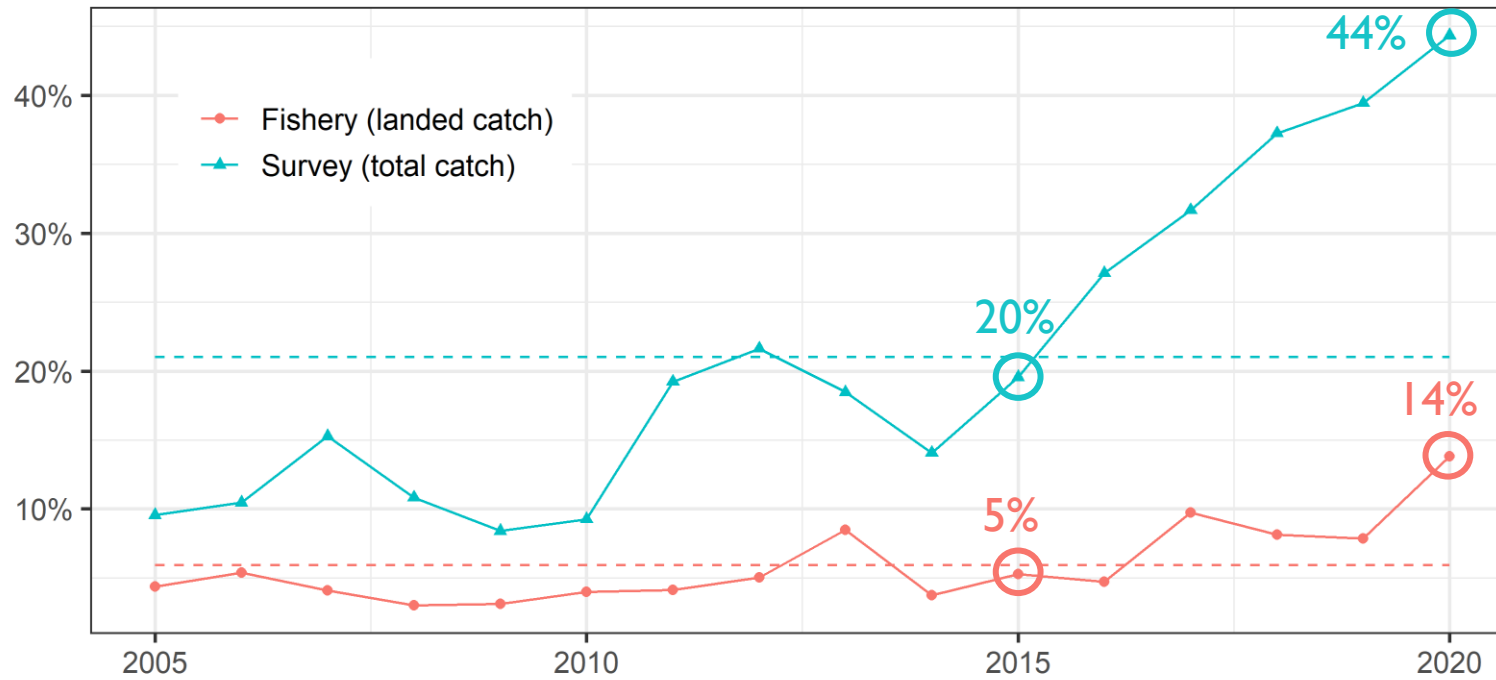
Slight decrease in mark-recapture abundance

Fishery CPUE (lb/hook)



No update to fishery CPUE (new logbook application and data re-entry project)

Percent of sablefish ≤ 3 dressed lb

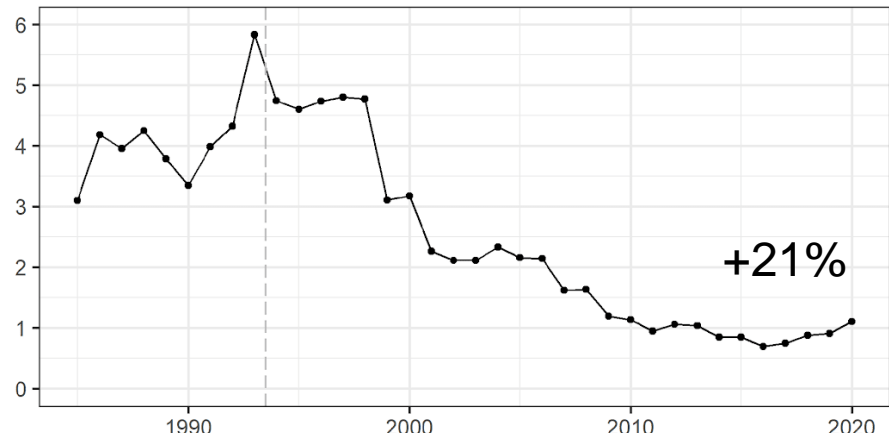


Increase in prevalence of smaller grade fish in both survey and fishery

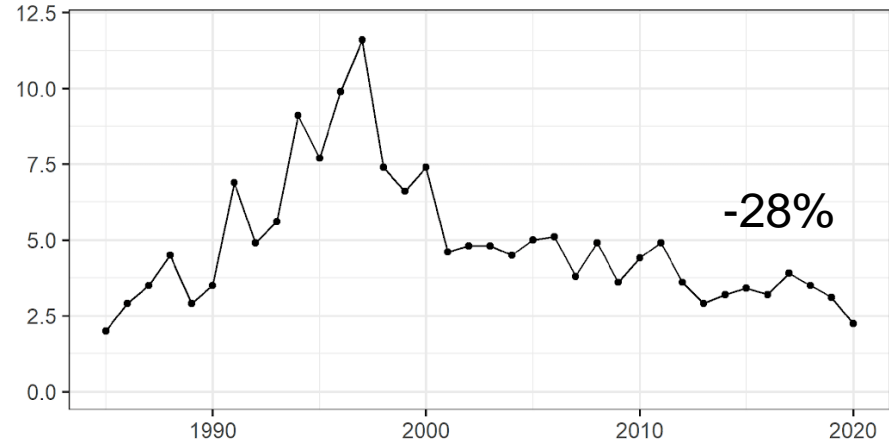
“Mind the gap” between fishery landings and survey catch

2020 NSEI fishery

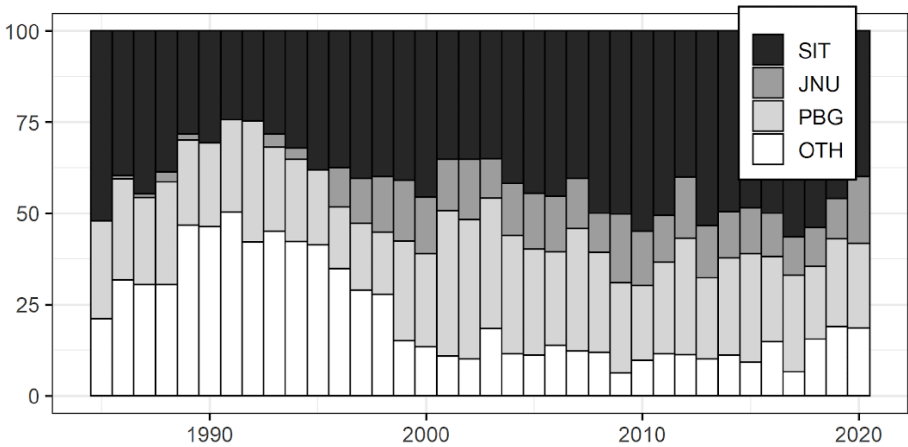
Catch (million lb)



Ex-vessel value (million USD)



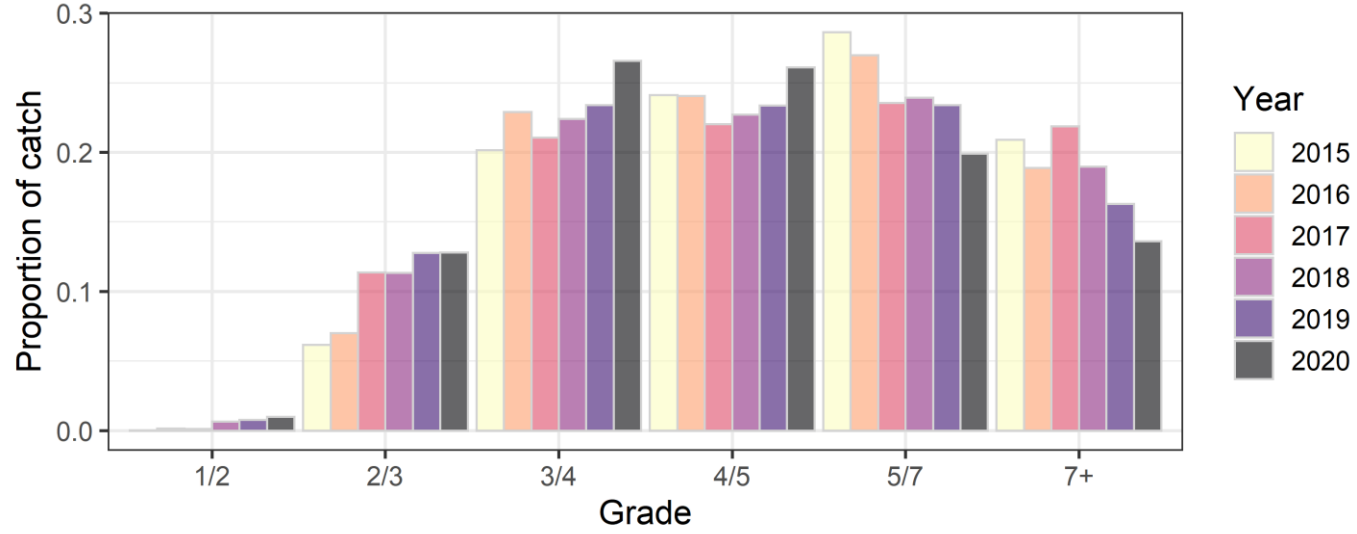
Percent by port



Increase in catch, but steep decrease in fishery value

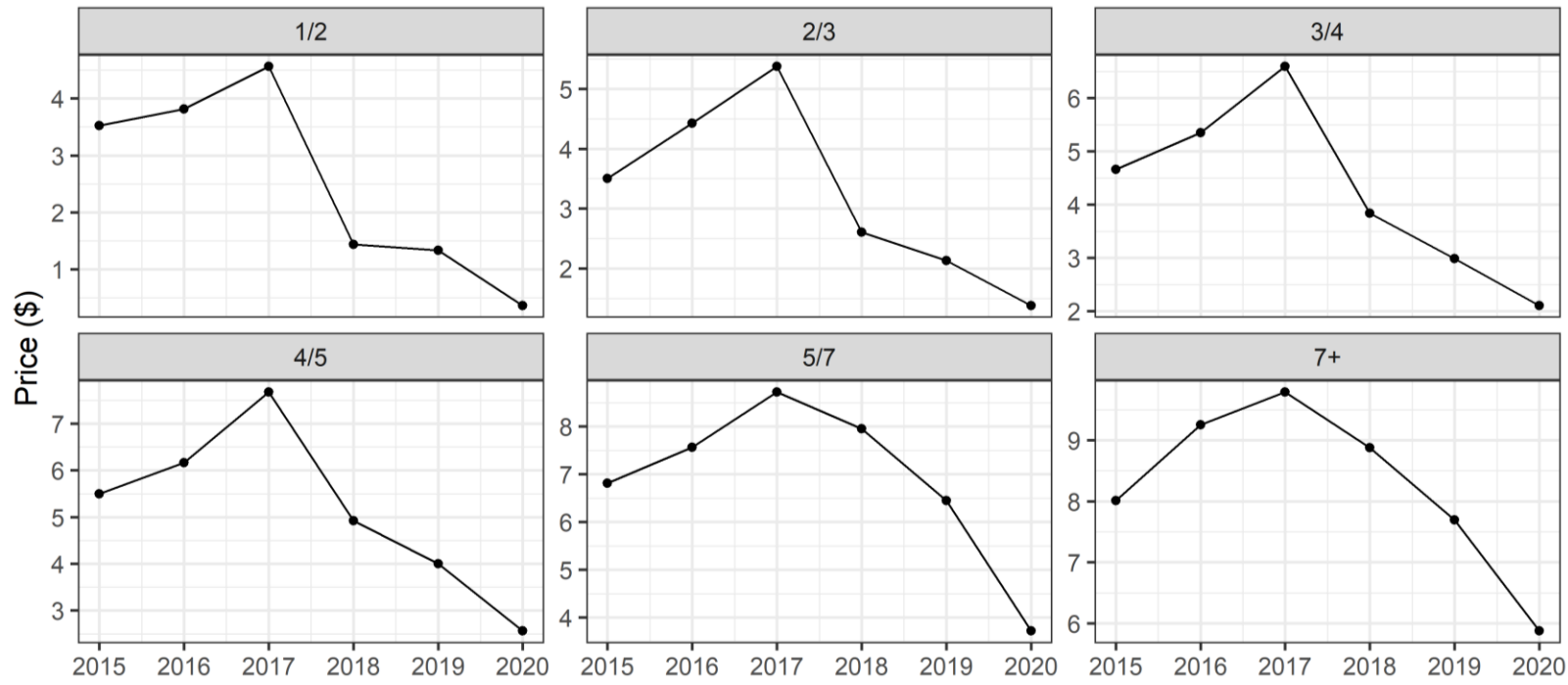
Shift in landings away from Sitka towards Juneau

Processor size grade compositions



Decrease in the proportion of catch made up of premium size grades (5/7, 7 ups)

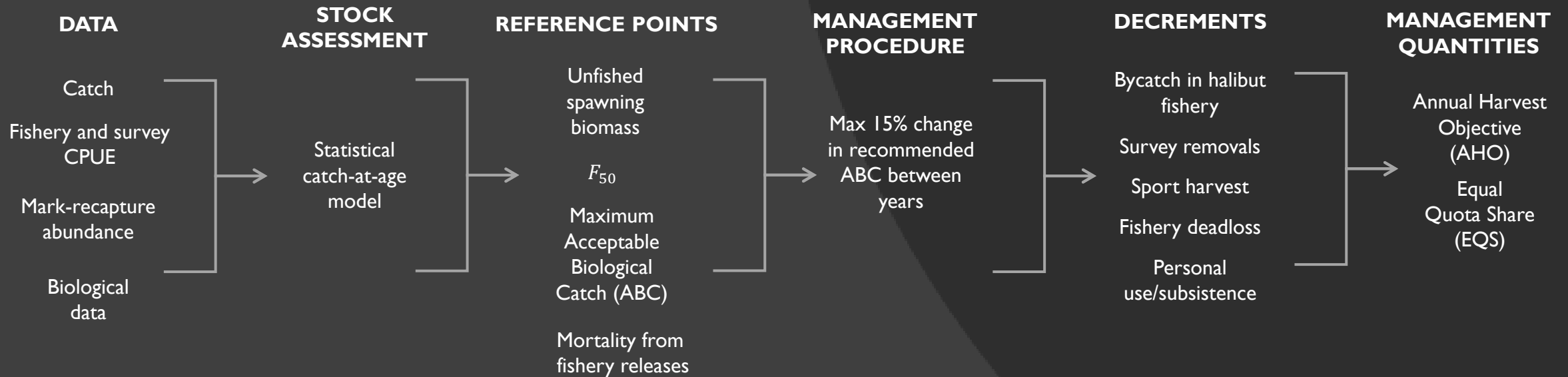
Processor size grade prices



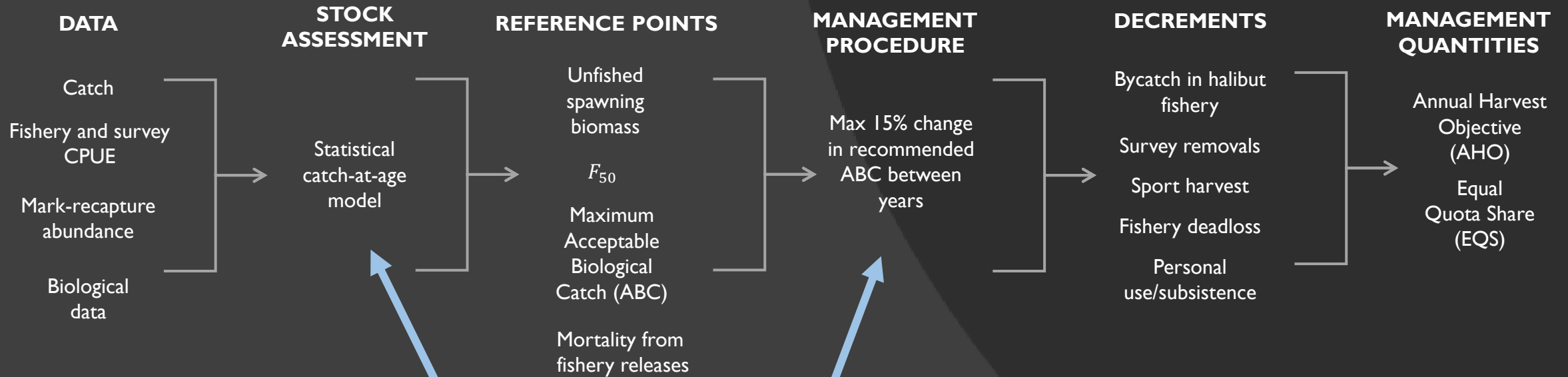
Steep drop in prices for all size grades

...outlook for 2021?

Assessment and management steps

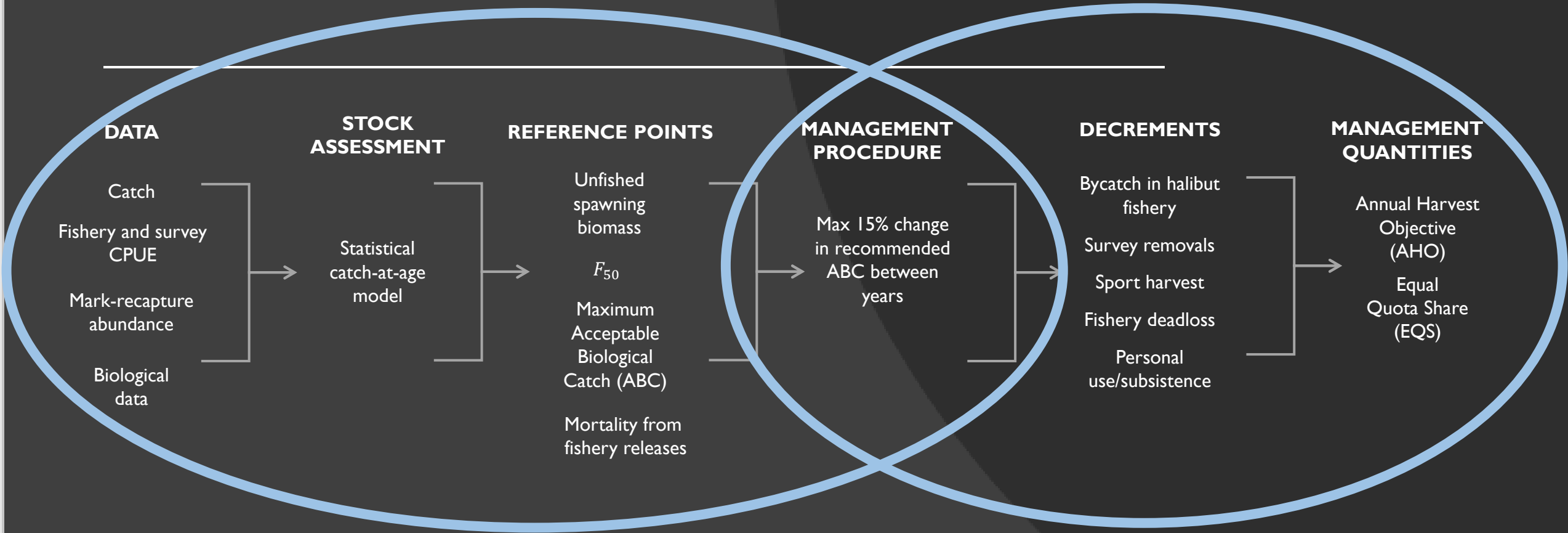


Assessment and management steps

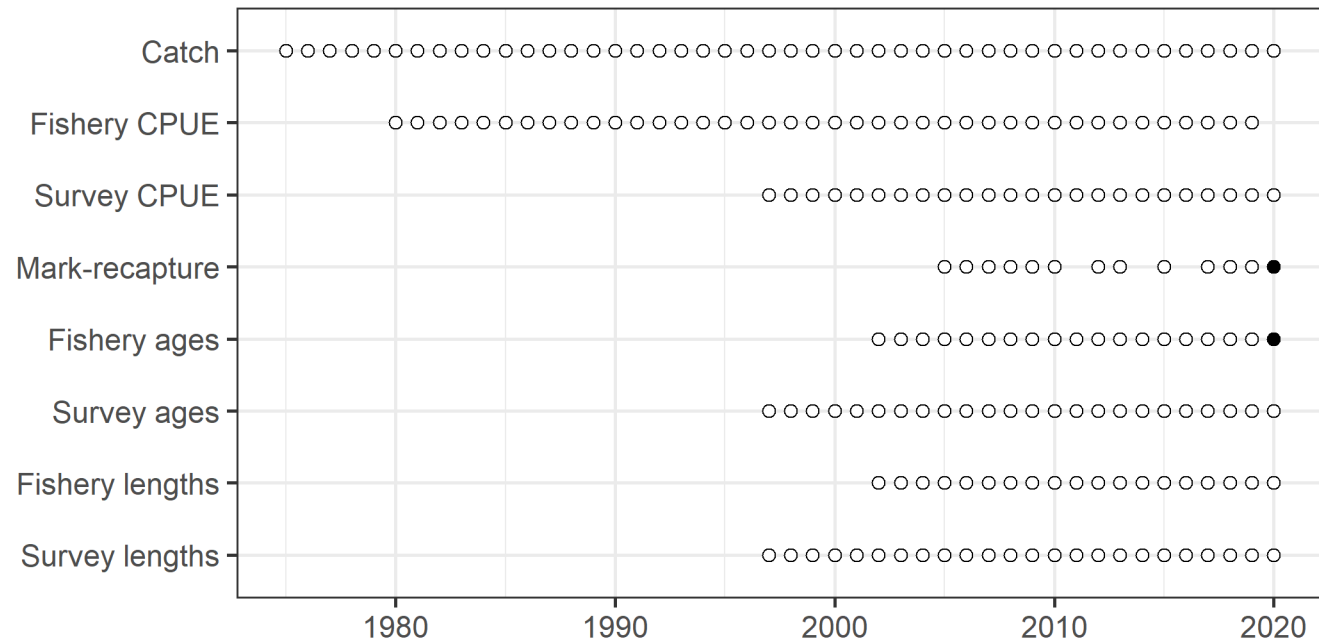


New in 2020

Assessment and management steps



Stock assessment update



- New model presented in 2019, implemented in 2020
- 2021 forecast still in progress
- Model developments: selectivity
- Primary sources of uncertainty: recruitment, fishery dynamics (total vs. retained catch)



Decrements

1. Bycatch mortality in the IFQ halibut fishery
2. ADF&G longline survey removals
3. Recreational harvest (guided & unguided)
4. Subsistence and personal use harvest
5. Deadloss discard mortality (i.e. sandfleas, sharks, whales, etc.) in directed NSEI commercial fishery

**Sablefish
Decrements
2018–2021**



Year	2018	2019	2020	2021
ABC (lbs)	965,354	1,058,037	1,216,743	
Decrements				
1) Bycatch mortality in halibut fishery	19,583	18,434	16,207	
2) ADF&G longline survey removals (excluding catch retained by permit holders)	15,875	26,260	24,698	38,407
3) Guided sport harvest	41,179	33,135	35,004	
Unguided sport harvest	5,872	11,340	5,280	
4) Subsistence and personal use	21,730	21,587	17,821	19,295
5) Deadloss discard mortality in sablefish fishery	5,699	8,046	9,729	12,144
Small discard mortality in sablefish fishery	---	19,142	---	---
Total Decrements	109,938	137,943	108,740	
AHO	855,416	920,094	1,108,003	
# of Permit Holders	78	78	75	75
EQS	10,967	11,796	14,773	

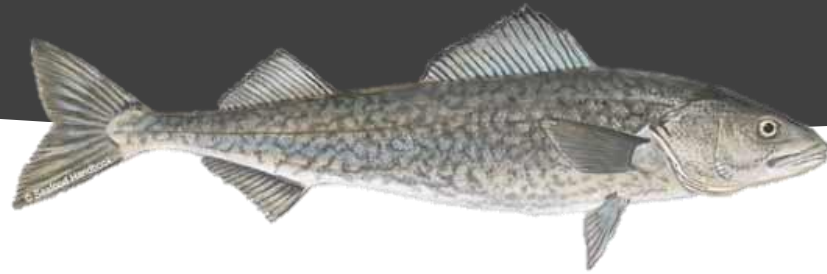


2021 Annual Harvest Objective Outlook

- Assessment still underway
- Decrements are being finalized
- Announcement and report out later this summer

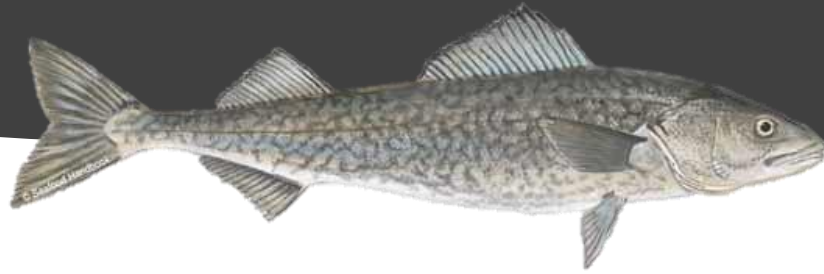


Question and Answer



Please ask your questions or type them in the chat for discussion.

SSEI Sablefish fishery and survey data review

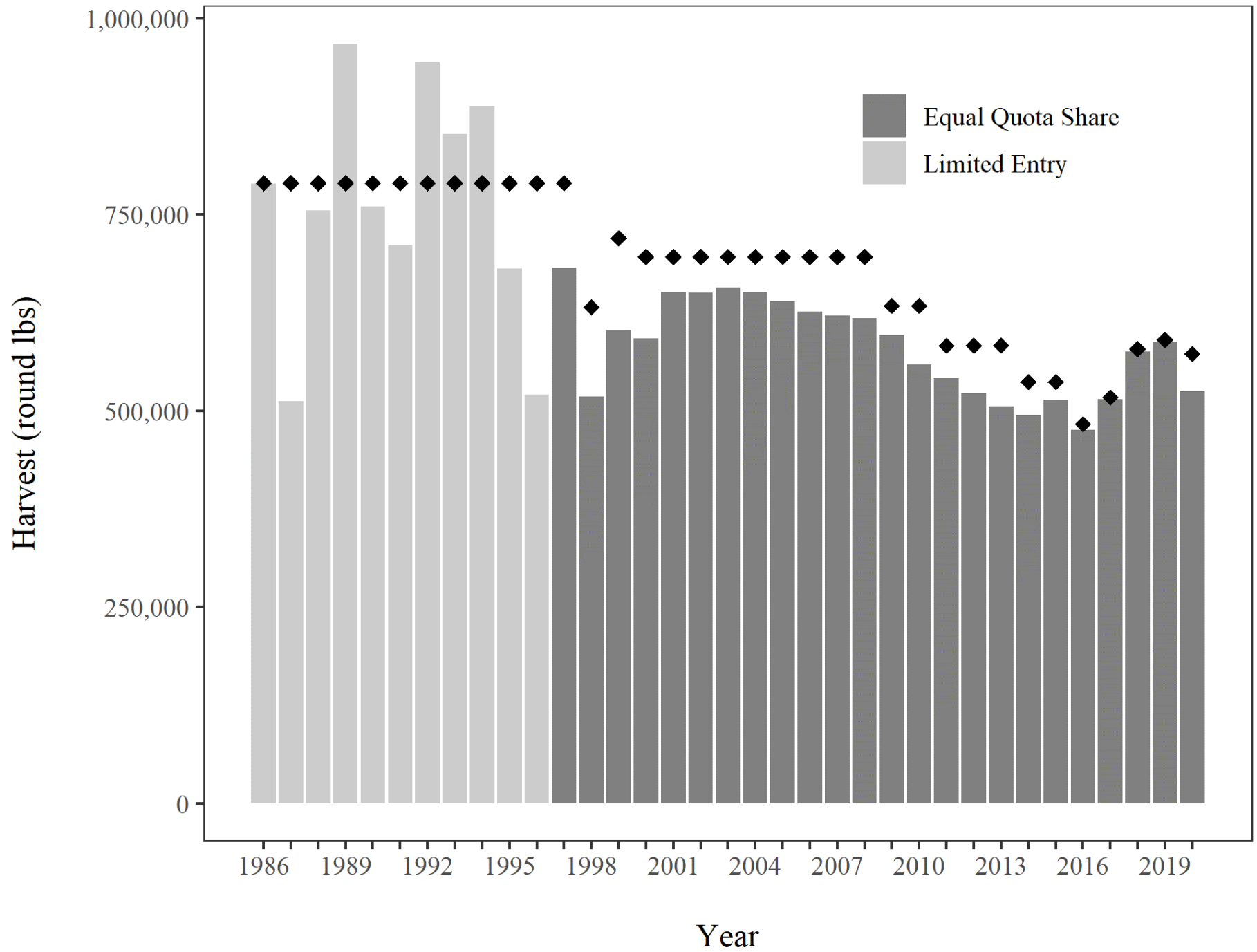


Sablefish Industry Meeting
April 30, 2021

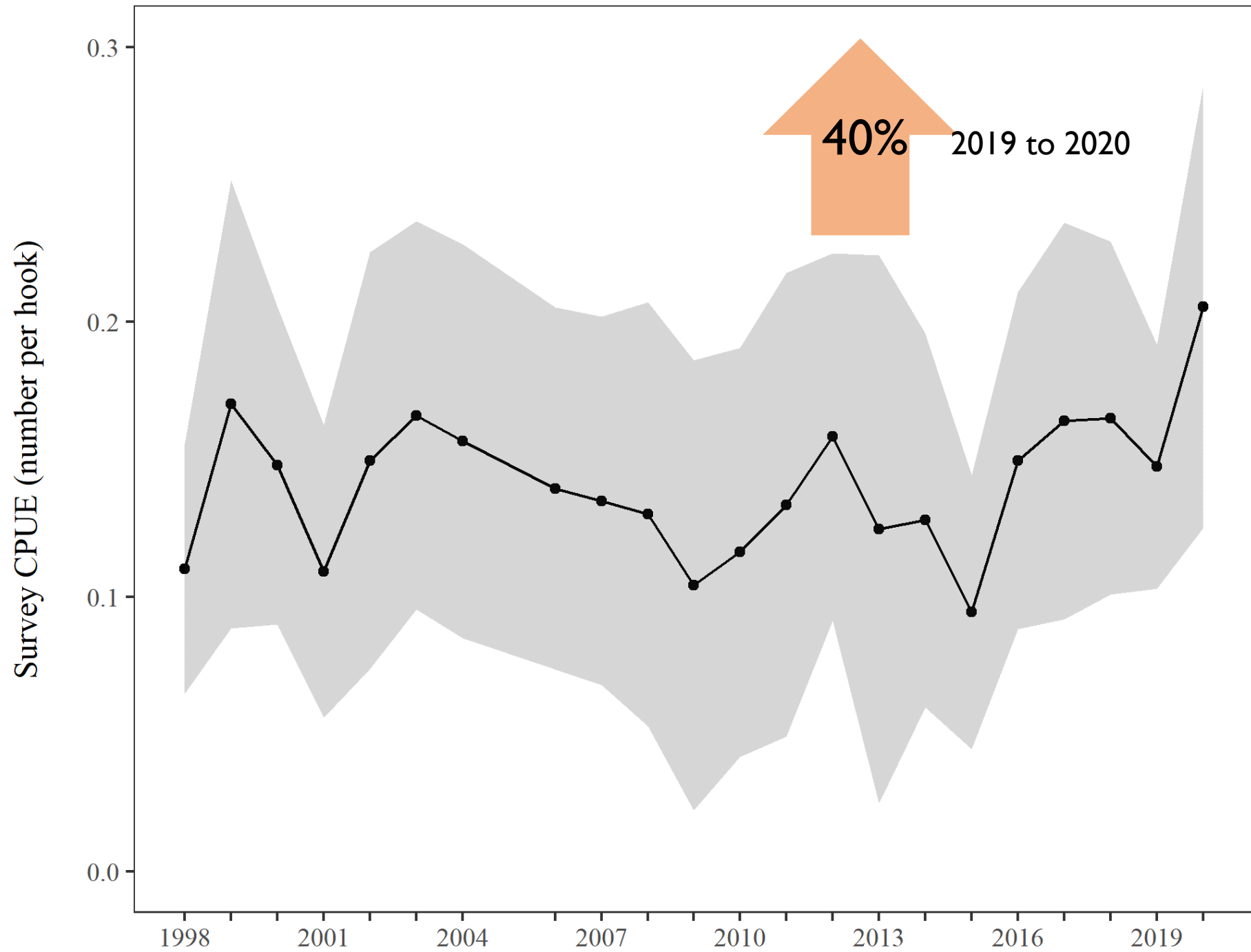
Rhea Ehresmann

rhea.ehresmann@alaska.gov

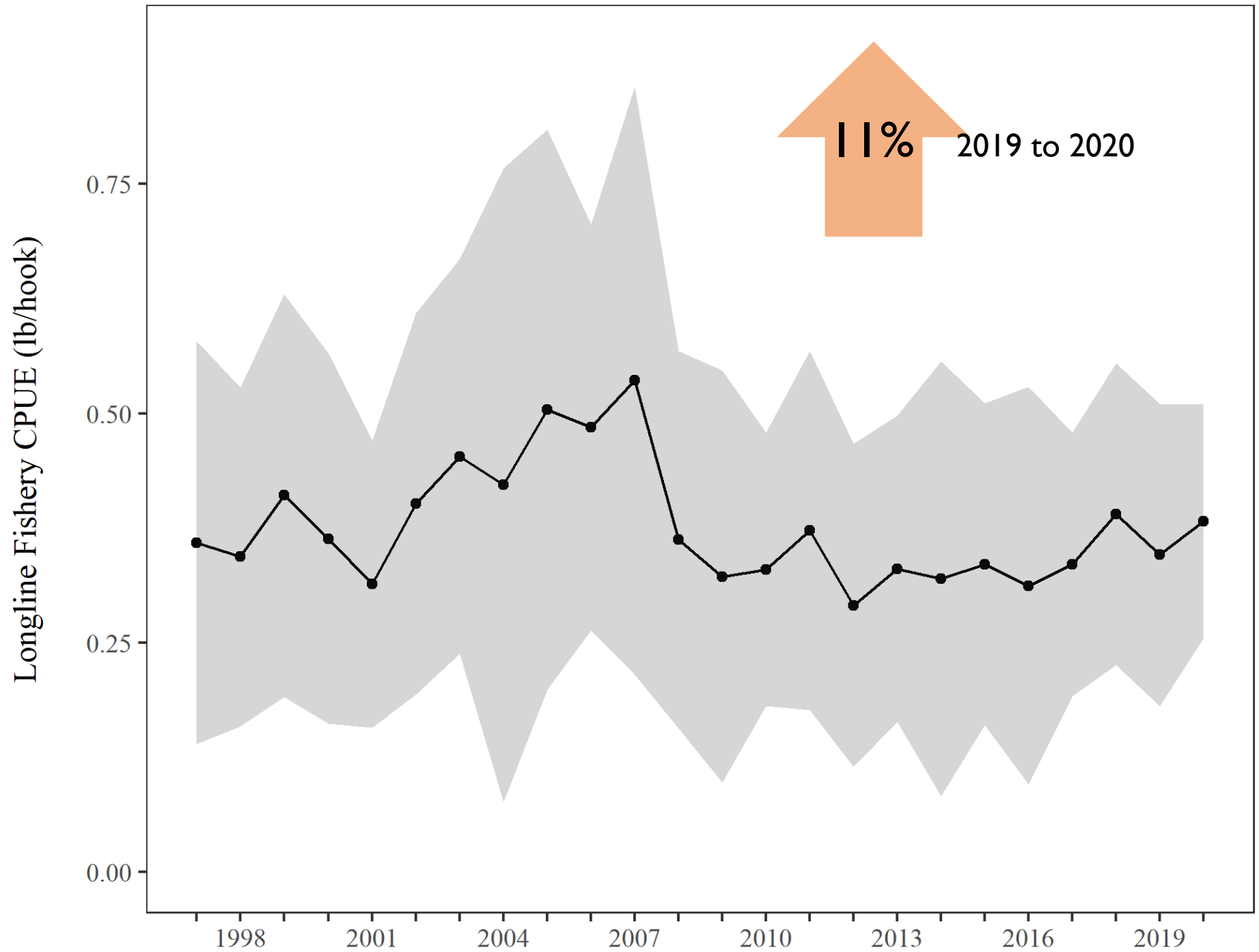
Fishery



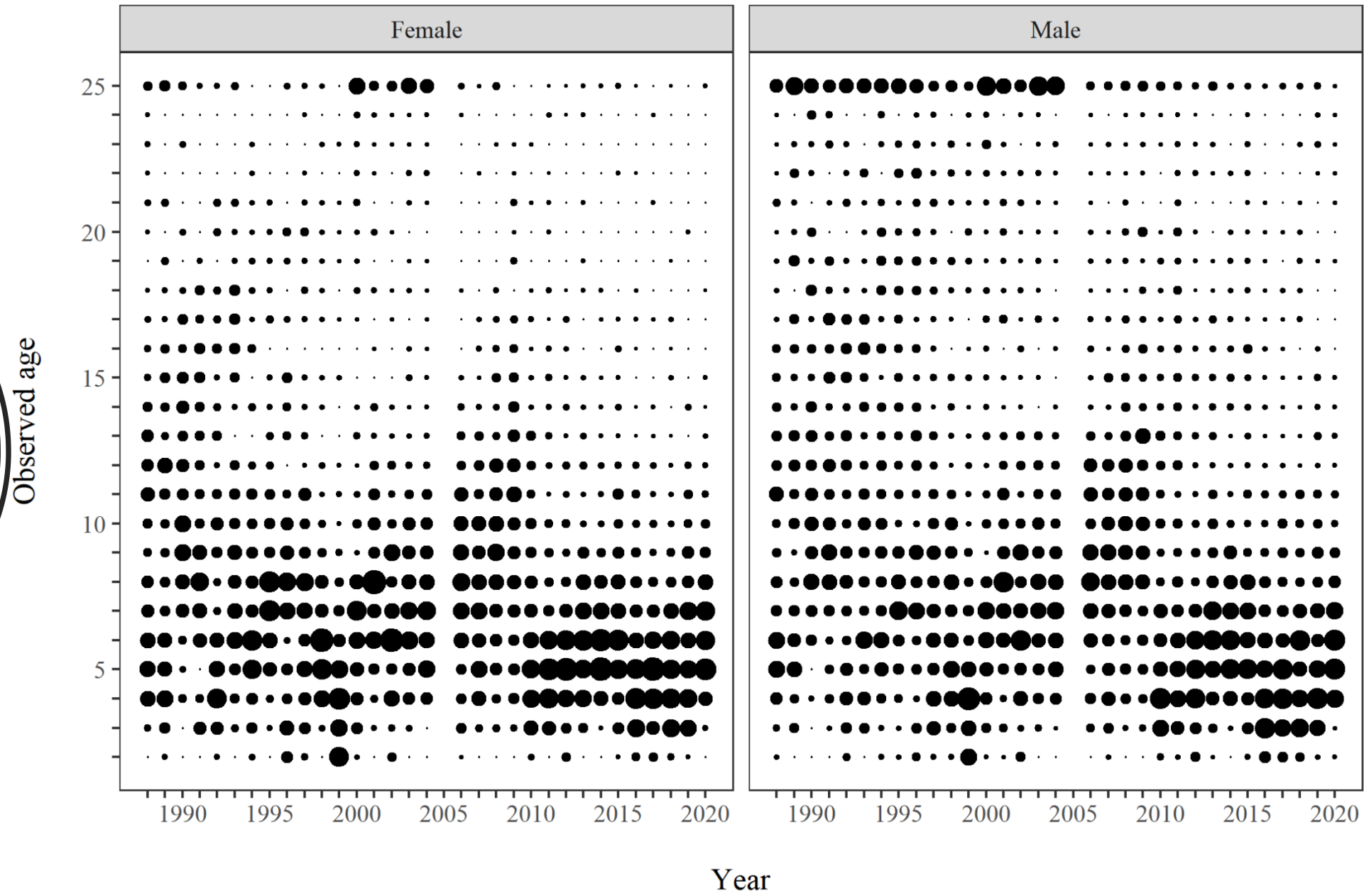
Survey Performance



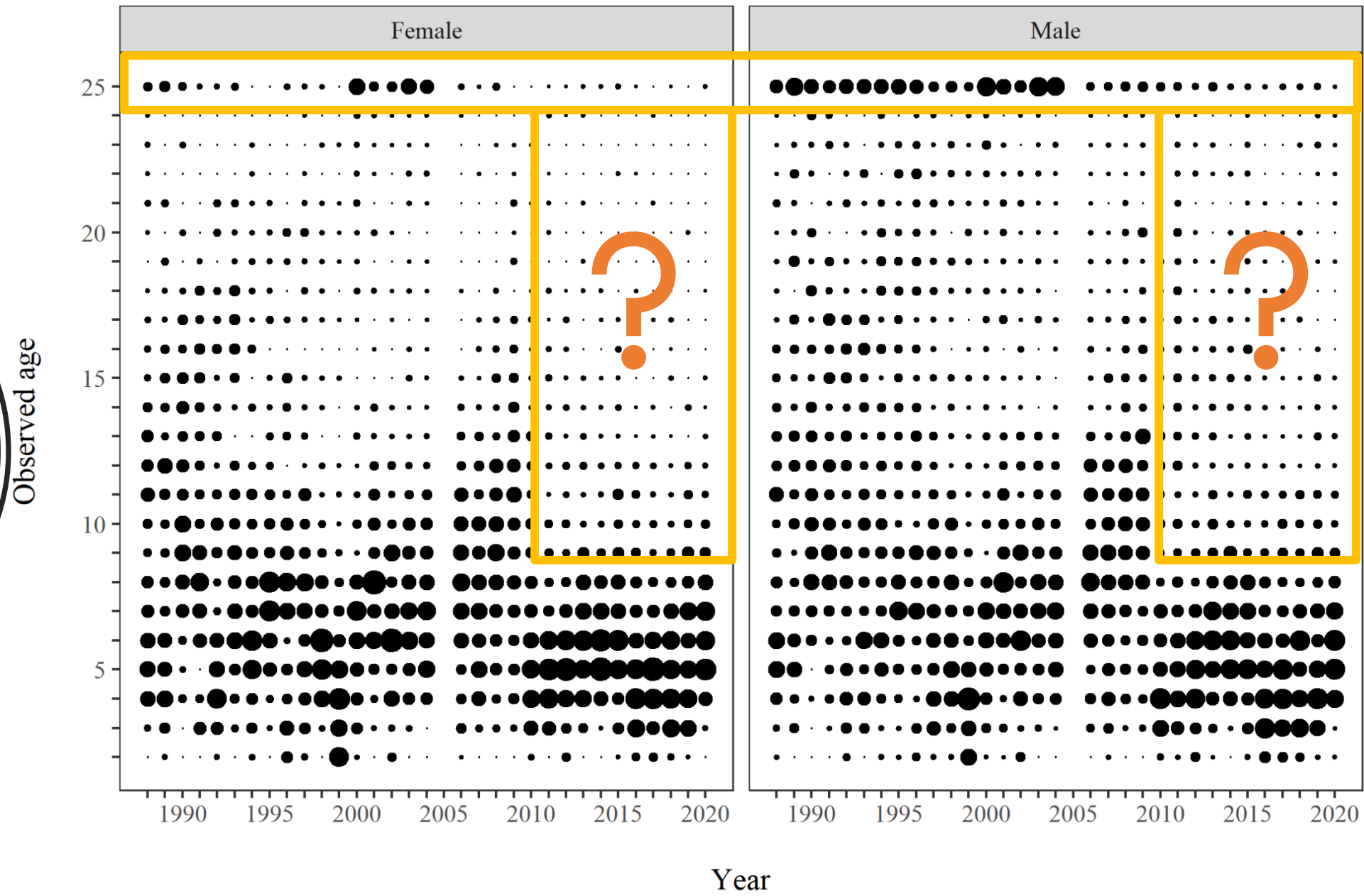
Longline Fishery Performance



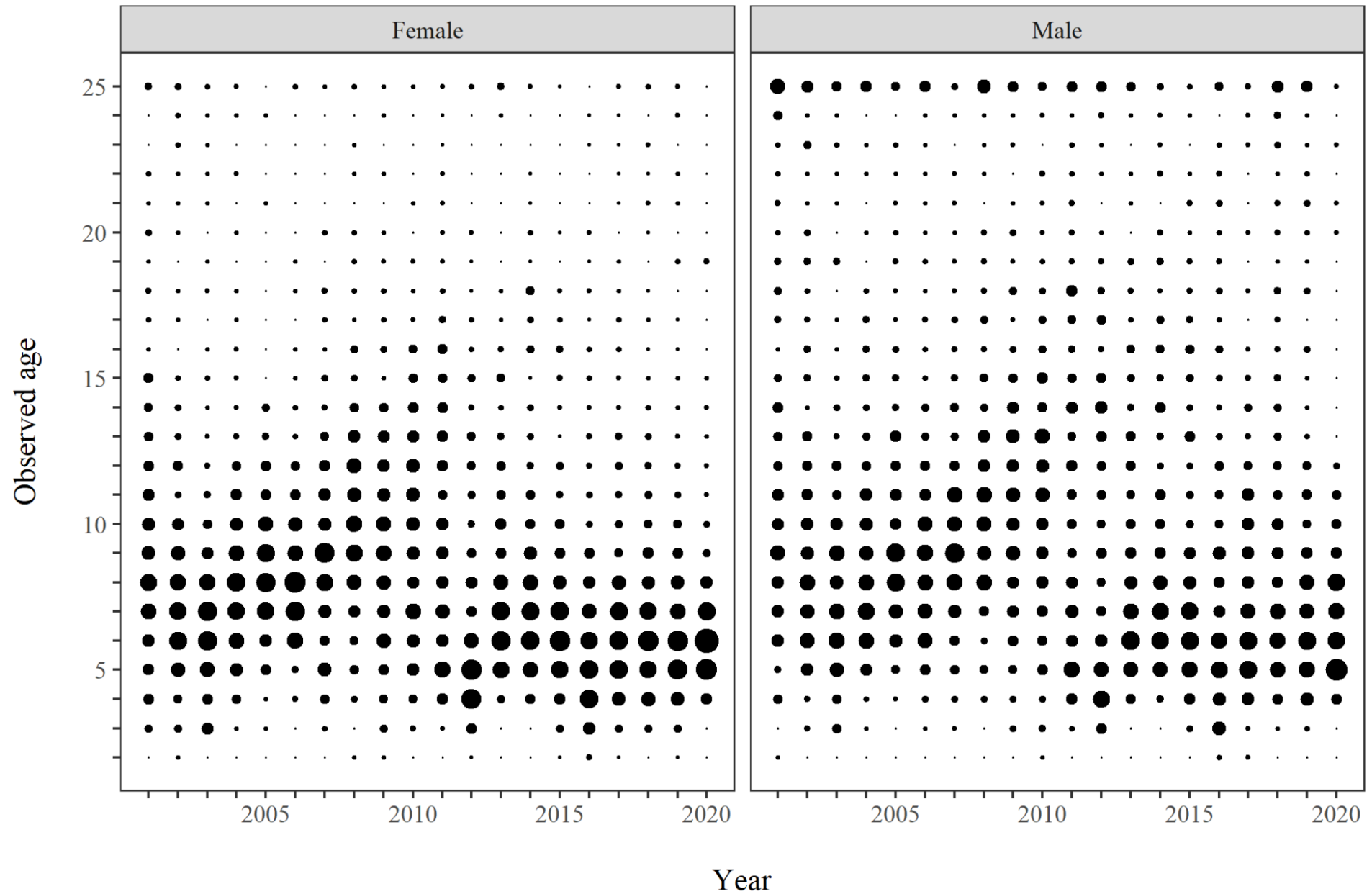
Longline Survey Age Structure



Longline Survey Age Structure




Longline Fishery Age Structure

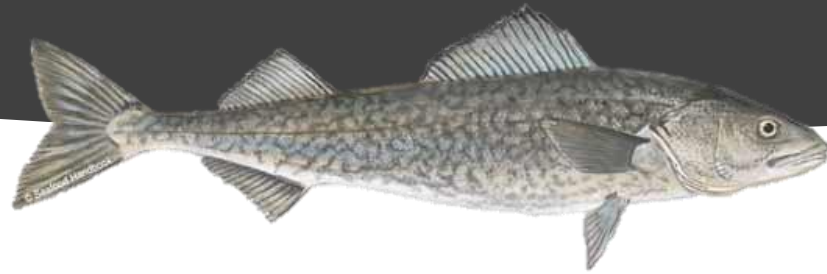




2021 Annual Harvest Objective Outlook

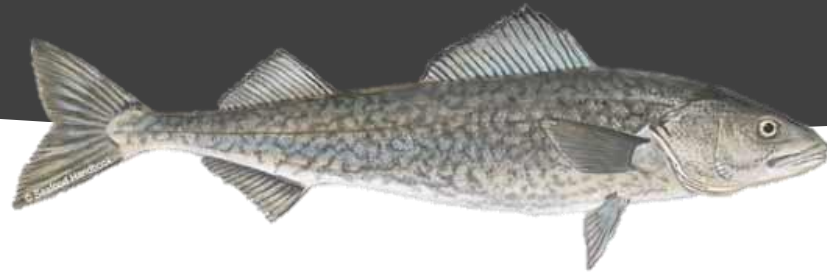
- Expect an increase 
- % increase based on CPUE and biological data
- 2014 and 2016 year classes still maturing but fewer older fish
- PQS forms and registration packets mid-May

Question and Answer



Please ask your questions or type them in the chat for discussion.

10-minute break!



Please take a break and we'll return shortly.



2022 Board of Fisheries January 4-15 in Ketchikan

- **Proposal 215:** change sablefish fishing seasons for NSEI and SSEI to coincide with federal IFQ sablefish fishery;
- **Proposal 216:** extend SSEI season end date to December 15 and only allow pot gear during the extension;
- **Proposal 220:** allow longlined pots as a legal gear type in NSEI;
- **Proposal 221:** reduce escape ring size for commercial sablefish pot gear from 4 inches to 3.75 inches;
- **Proposal 223:** implement escape rings at 3.75 inches and tunnel opening requirements for personal use and subsistence fishing pot gear for sablefish



Acknowledgements

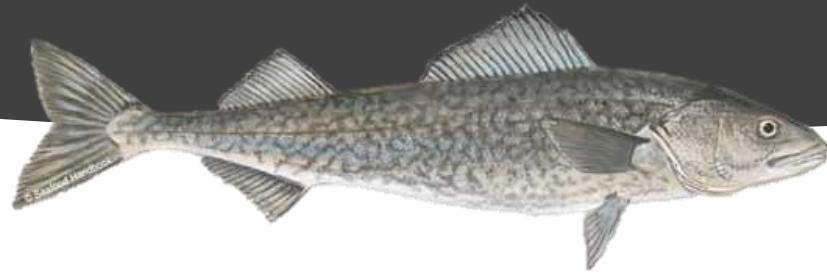
Thank you to:

- Groundfish Project Staff
- Captain Jim deLa Bruere and crew of R/V Medeia
- Survey vessels who participated in surveys
- NOAA scientists: Chris Lunsford, Dan Goethel, Cindy Tribuzio, Dana Hanselman, Kari Fenske...

THANK YOU!



FEDERAL PRESENTATIONS



NOAA
FISHERIES

See you next year!

