

2024 Sablefish Industry Meeting



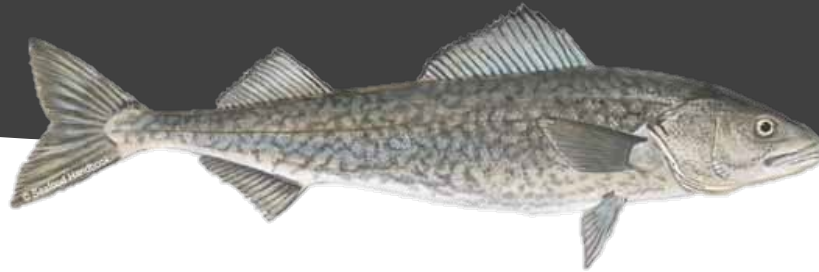
Welcome!



NOAA
FISHERIES

Sablefish Industry Meeting
April 24, 2024

Introduction



ADF&G Staff:

Rhea Ehresmann

Phil Joy

Jan Rumble

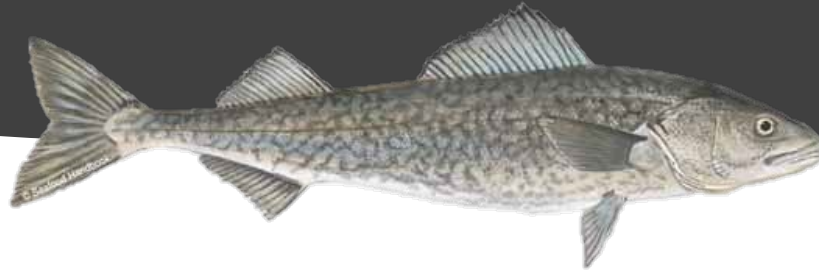
NOAA Staff:

Dan Goethel



NOAA
FISHERIES

Agenda



NSEI Chatham Strait (Phil Joy and Rhea Ehresmann, ADF&G)

Fishery assessment & survey data review

Outlook for 2024

SSEI Clarence Strait (Rhea Ehresmann, ADF&G)

Fishery & survey data review

Outlook for 2024

BOF Updates (Jan Rumble, ADF&G)

GOA Federal Sablefish Assessment (Dan Goethel, NOAA)

NSEI sablefish data review and outlook for 2024



Phil Joy

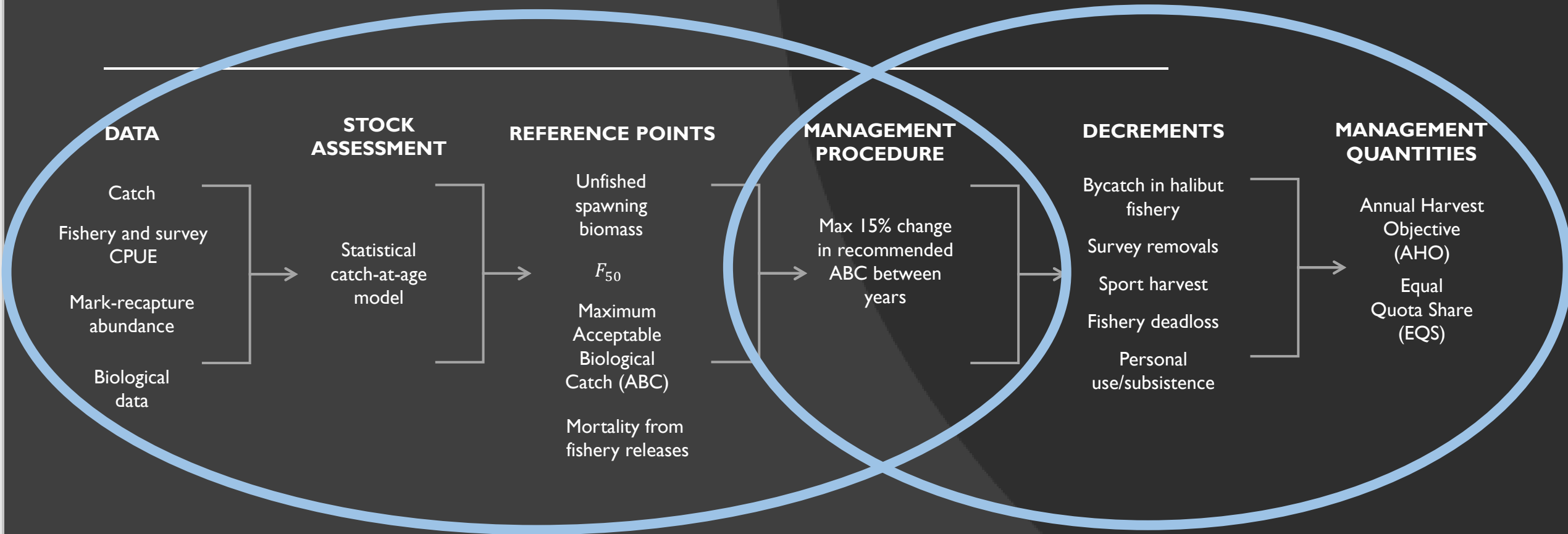
Rhea Ehresmann

Key points

- Second year of pot gear
- Population biomass continues to expand as 6 – 9-year-old fish from large recruitments continue to grow and mature
- Indices down from last year, but above long-term average:
 - ✓ Survey
 - ✓ Fishery
 - ✓ No mark-recapture in 2023
- Although population is growing still uncertainty in stock status

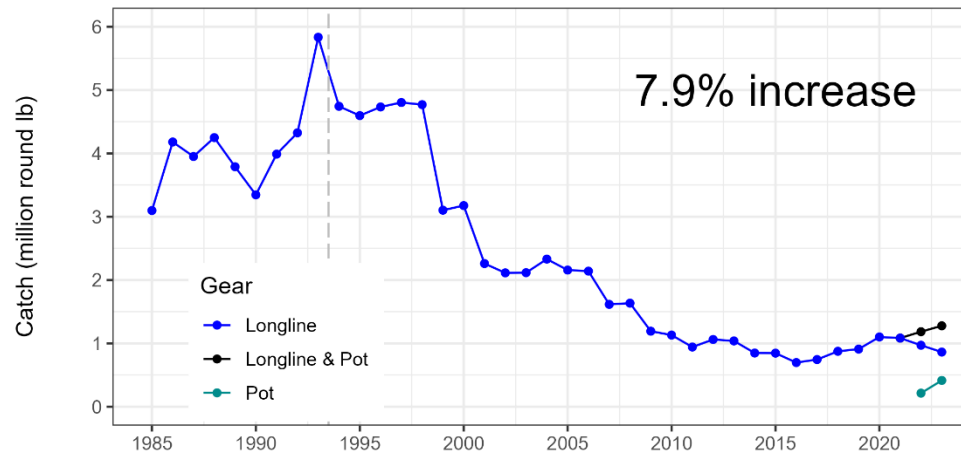


Assessment and management steps



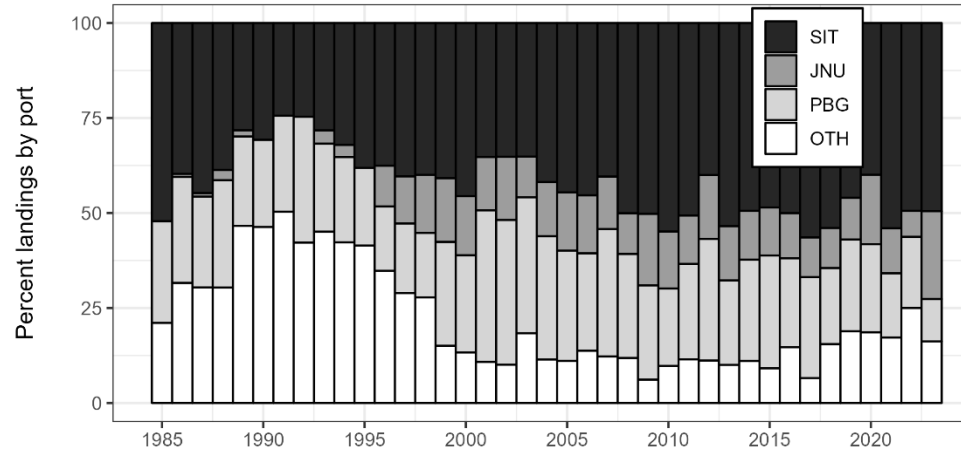
2023 NSEI fishery

Catch
(million lb)

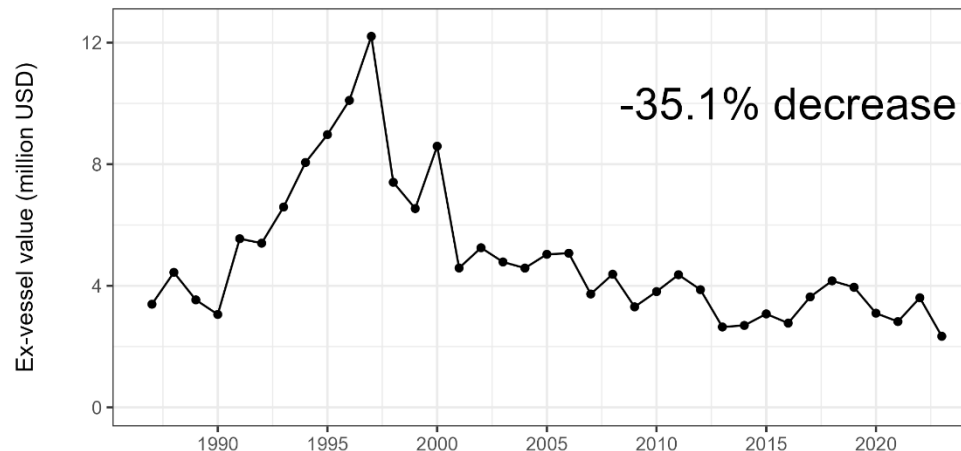


Catches climbing with
increase in population

Percent
by port

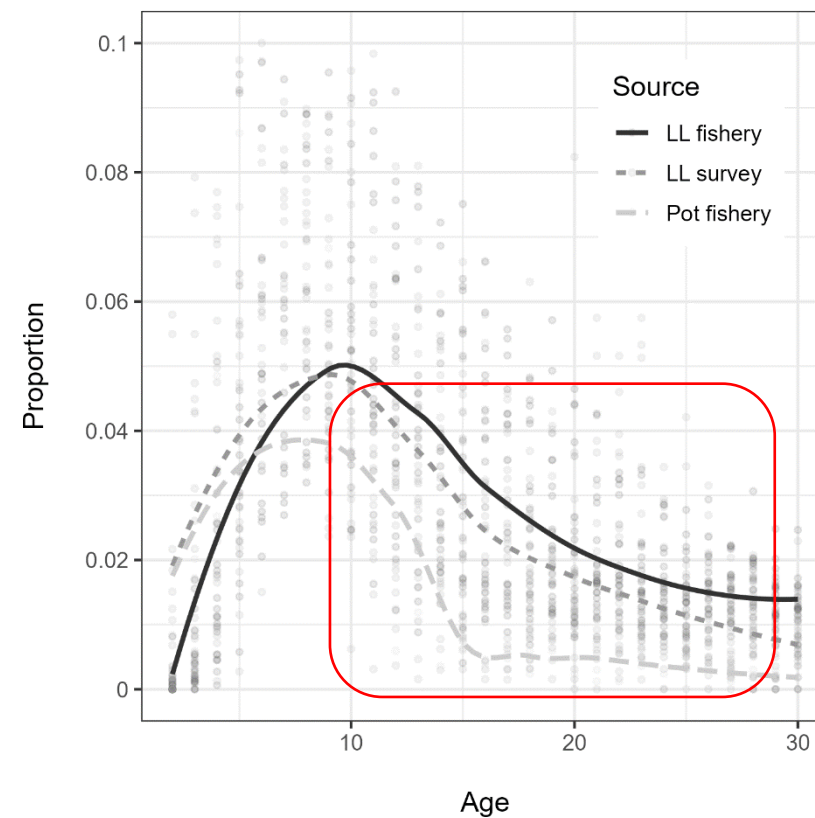
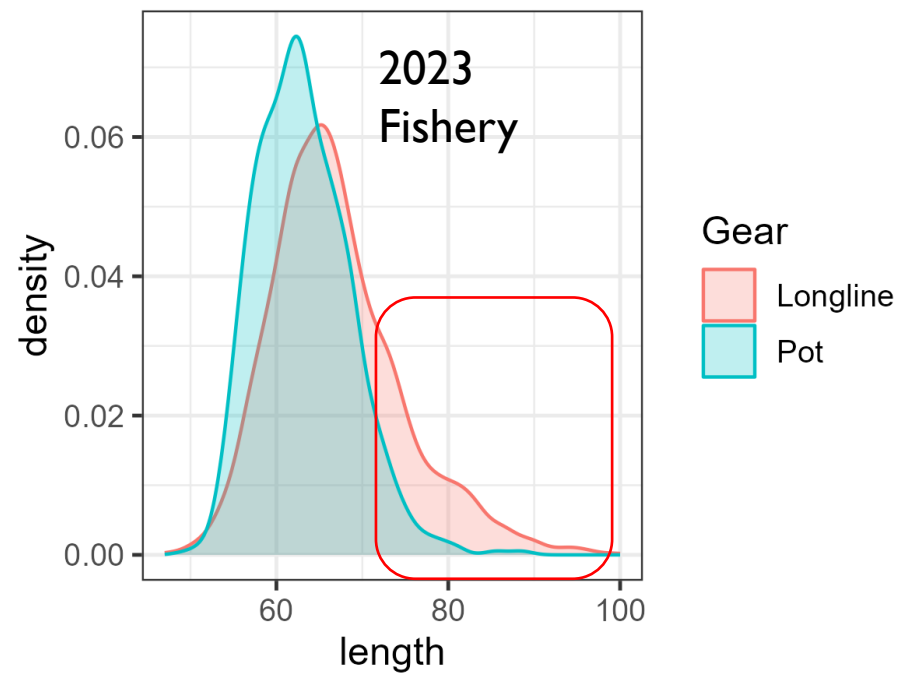
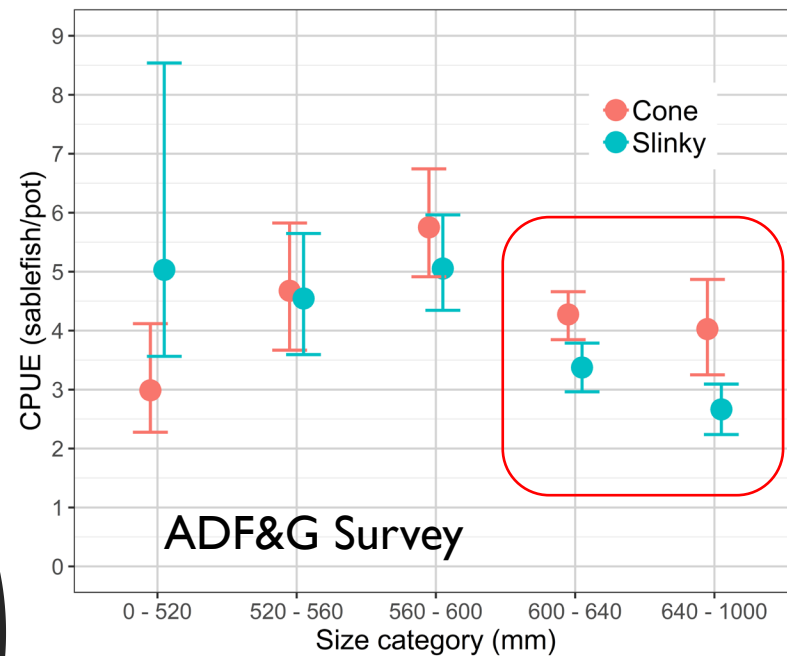


Ex-vessel
value
(million USD)

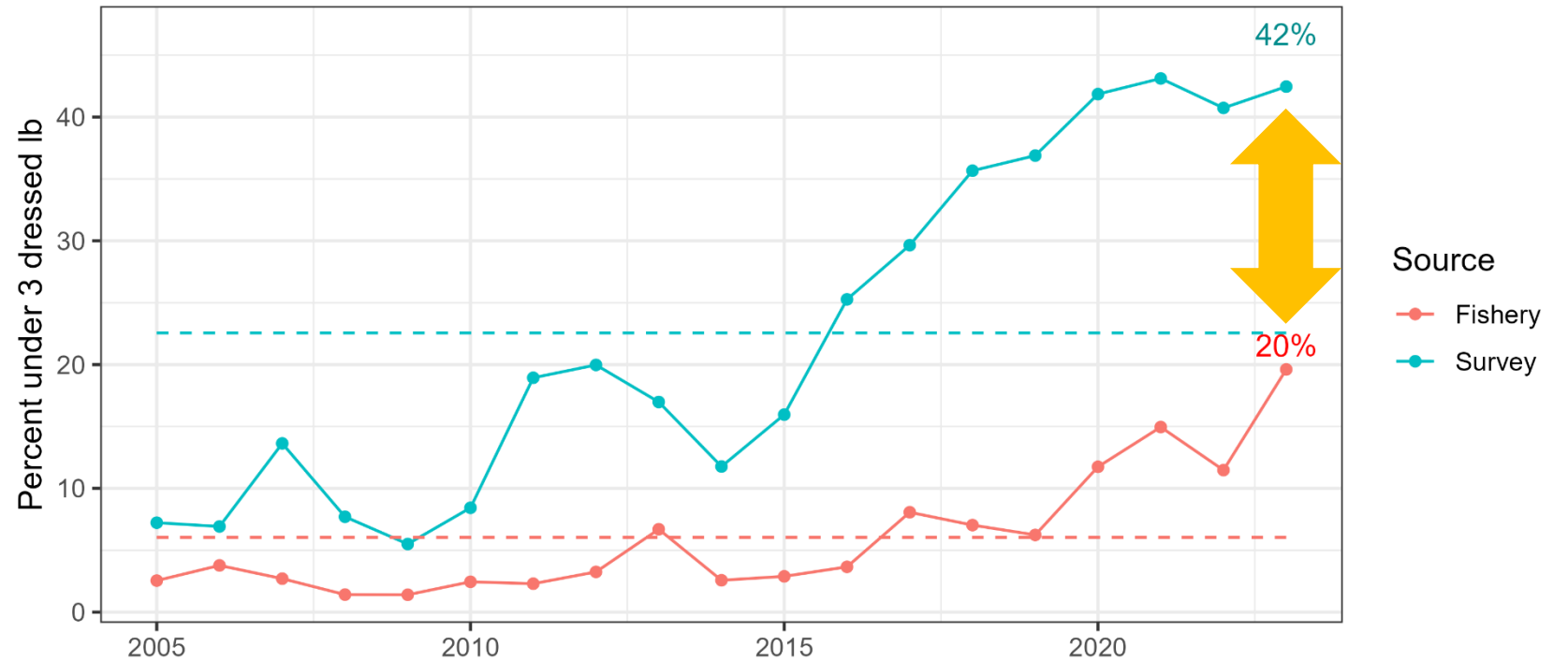


Ex-vessel value way down

First look at Slinky pots



3 lb sablefish



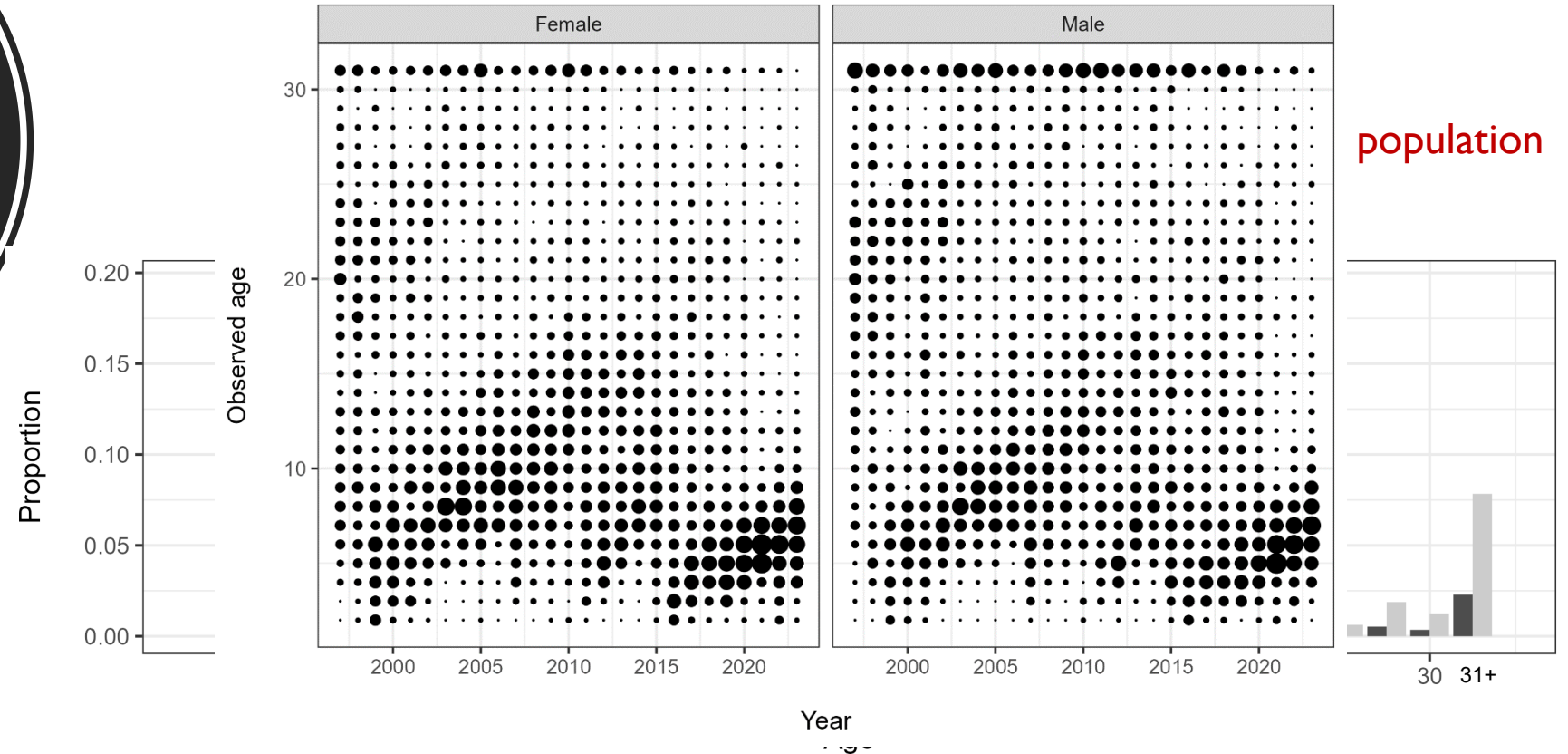
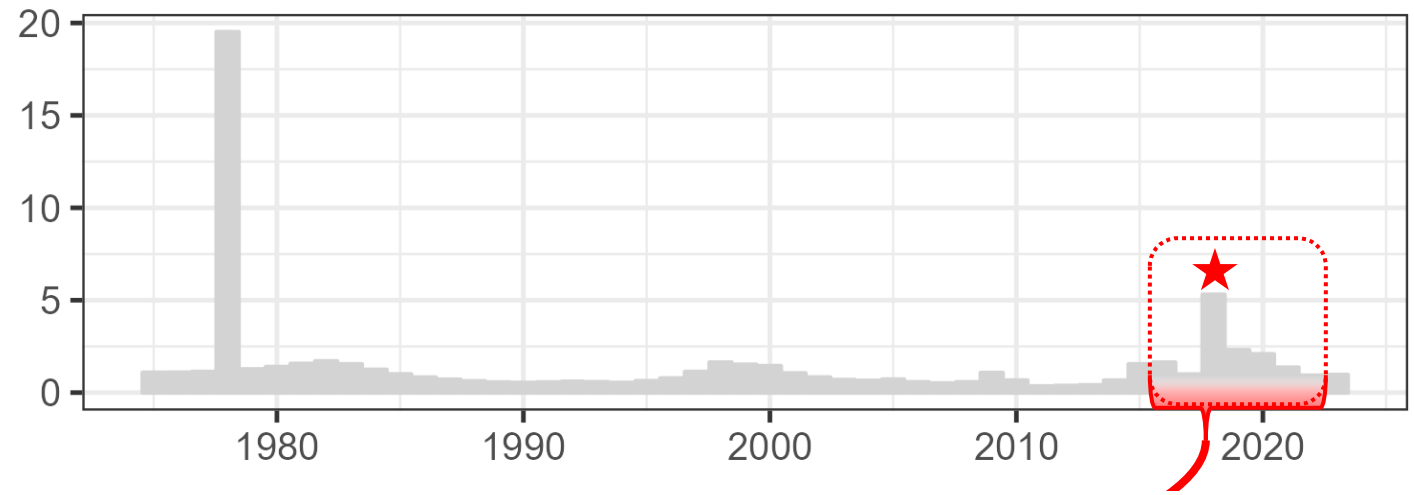
Growth of fish from big recruitments = fewer 3 pounders

RELEASES of small fish in fishery

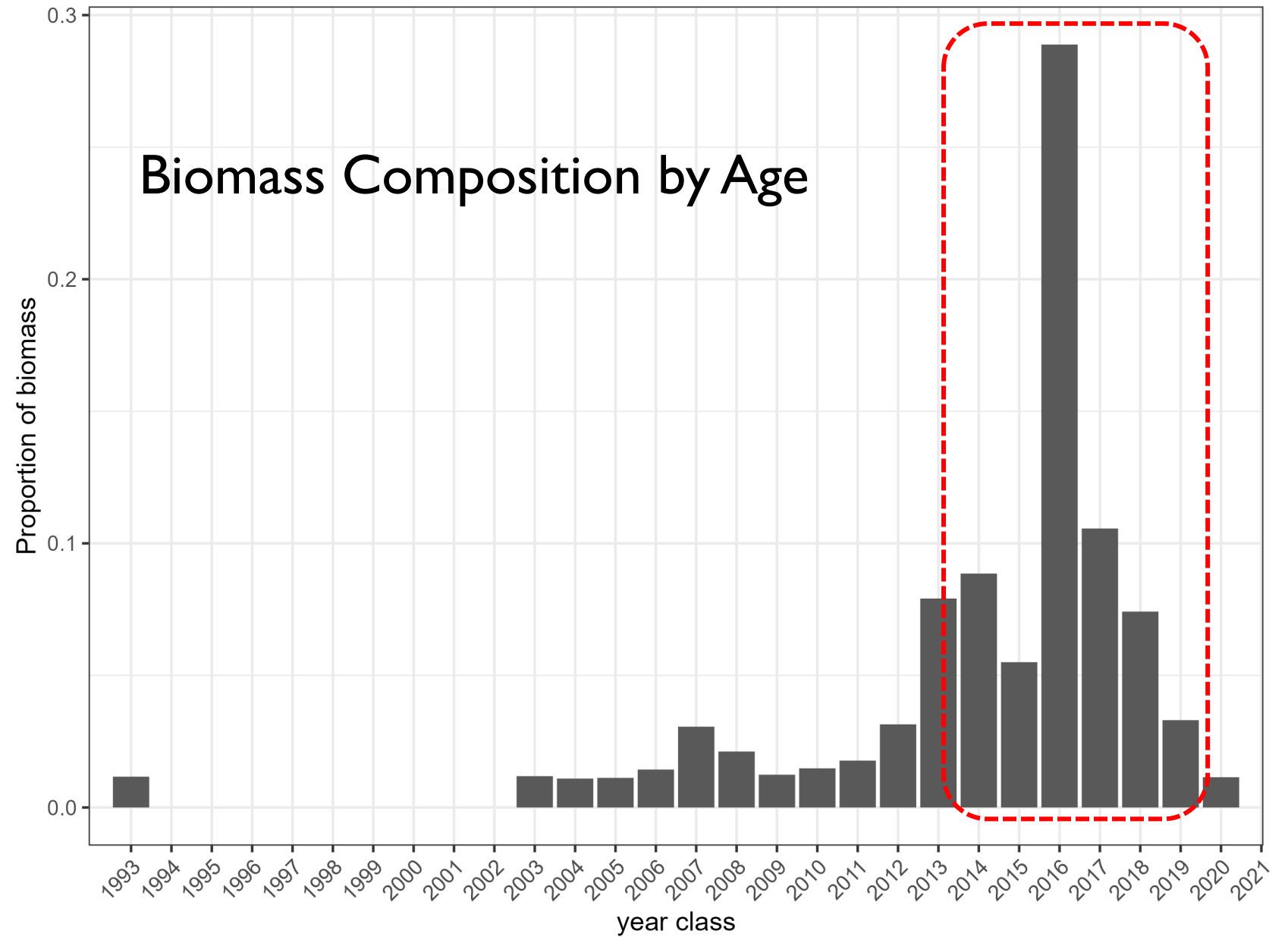
Age composition

(A)

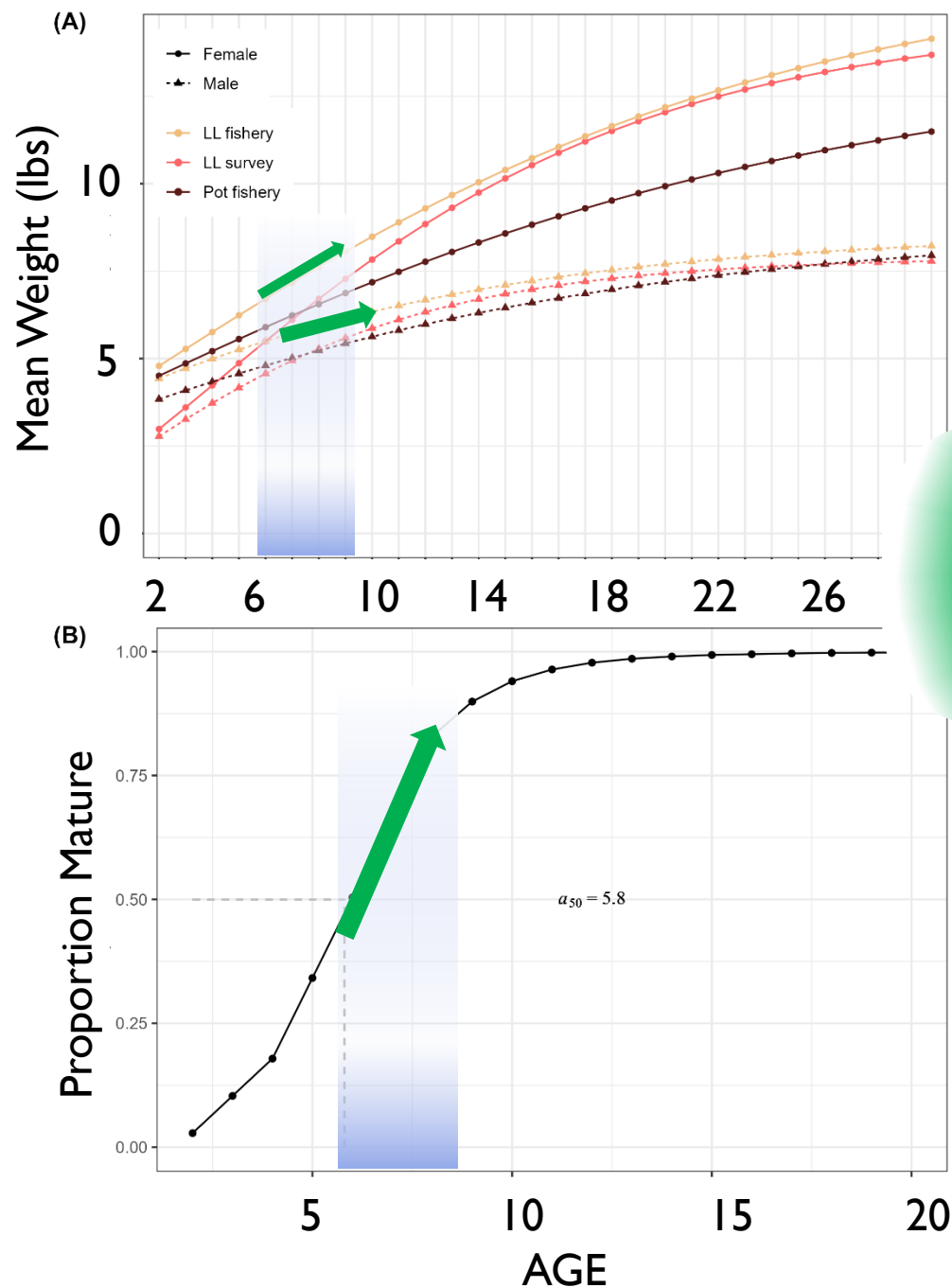
Age-2 recruits
(millions)



Age composition



Ages and sizes



Still not done growing

Biomass and
spawning stock still
growing

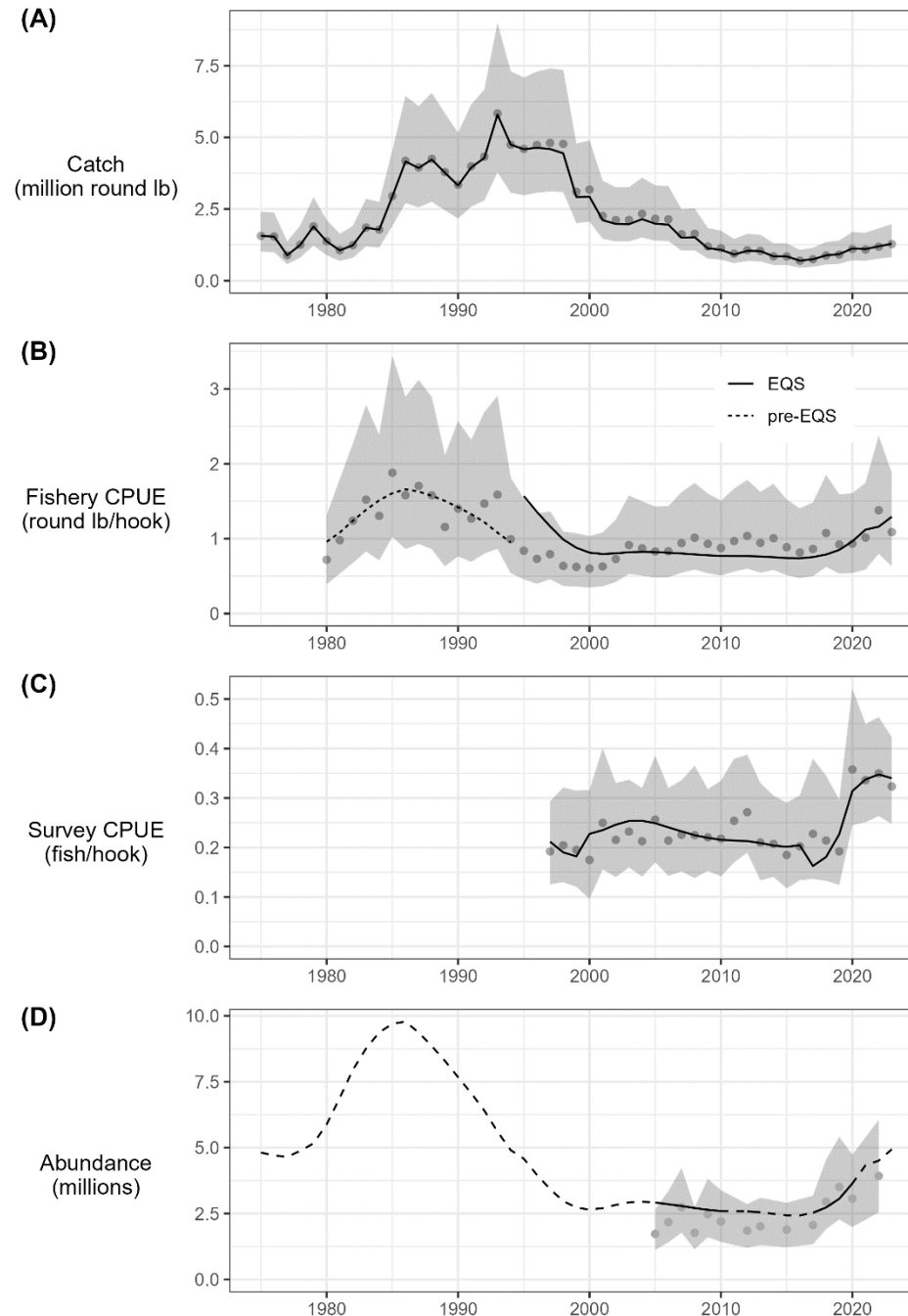
Still not fully mature

Assessment and management steps

New in 2023:

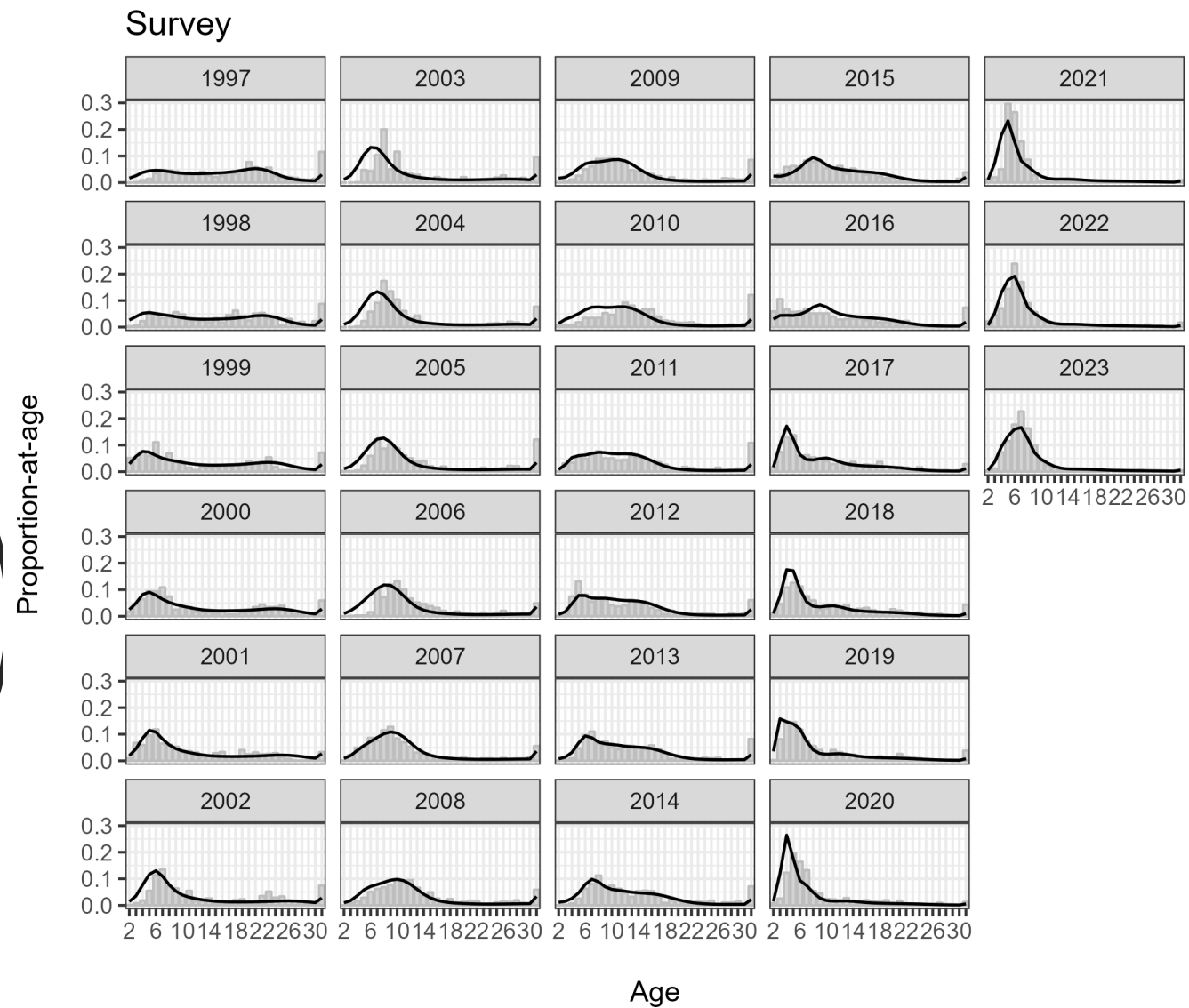
1. Fishery CPUE recalculated at set level using new database output
2. Second year with pot fishery; no effect on model yet
3. Survey and fishery selectivity set with 3 time blocks
4. Age compositions disaggregated to see if model improved. Not used in this assessment but may be necessary in future years.

Model performance



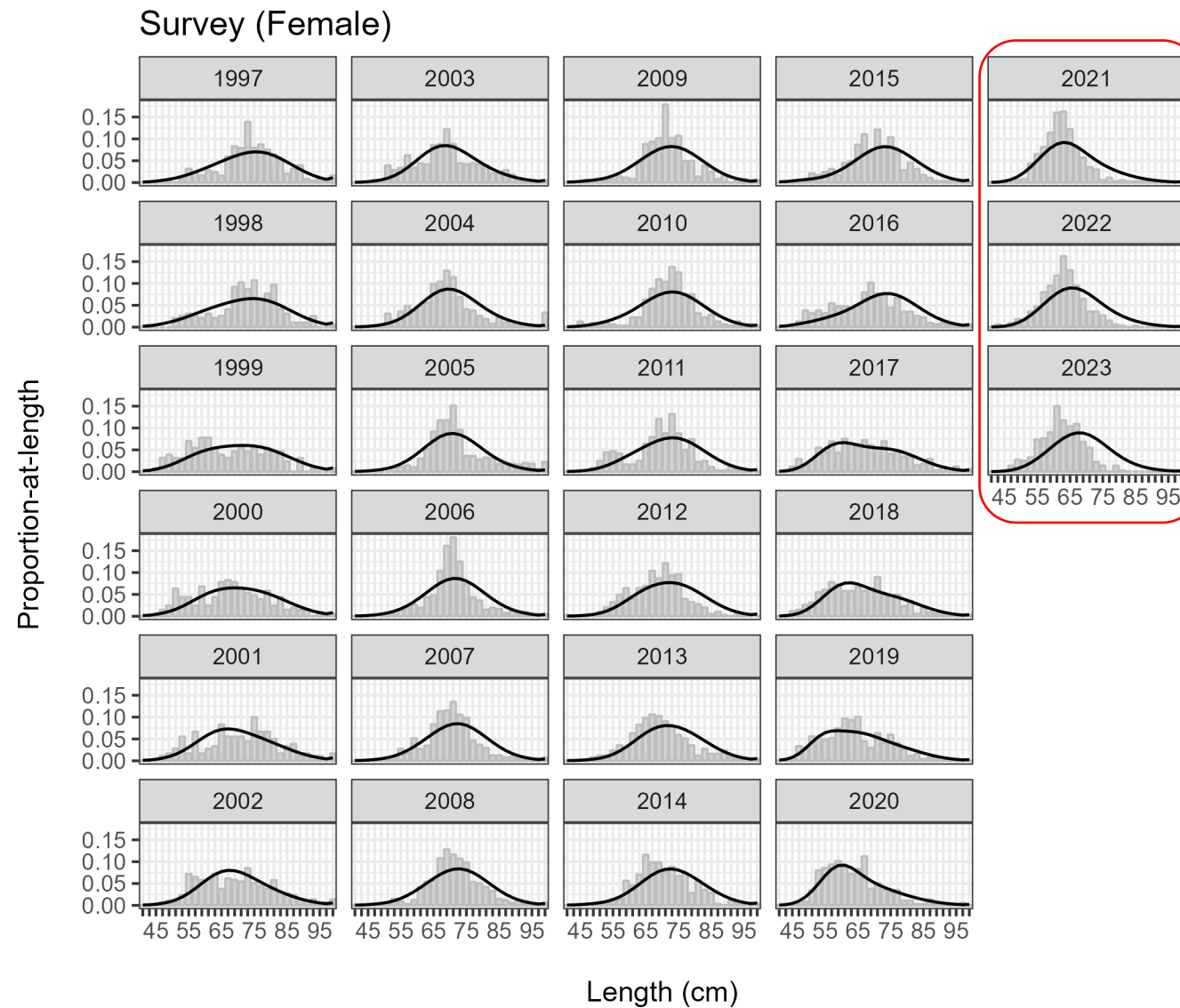
- New data weighting increases importance of age and length data
- Model uses estimates of uncertainty in indices (not subjectively weighted)

Model performance



- Better fit to age composition data

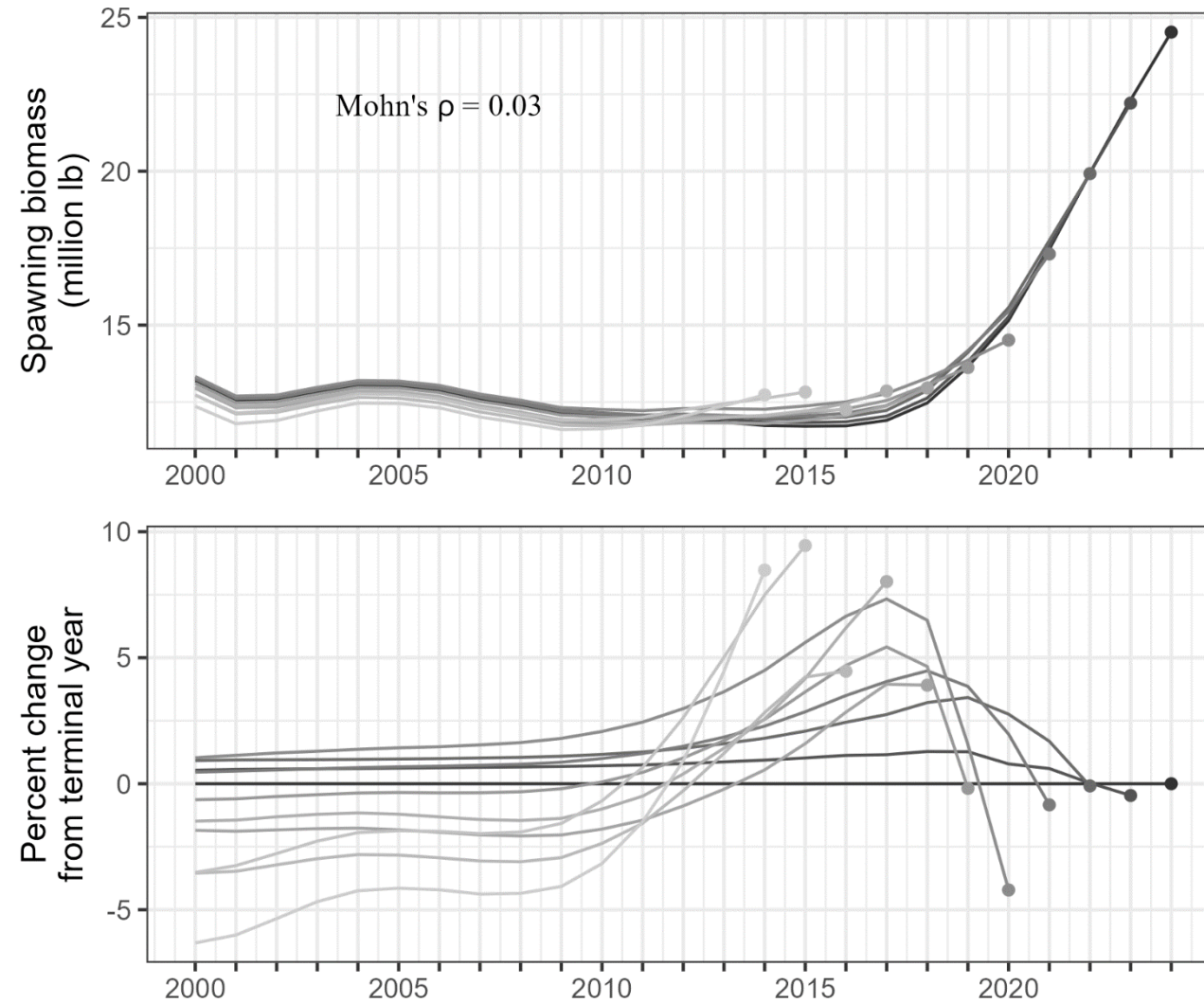
Model performance



- Better fit to length composition data in fishery
- But less so in survey...

Retrospective

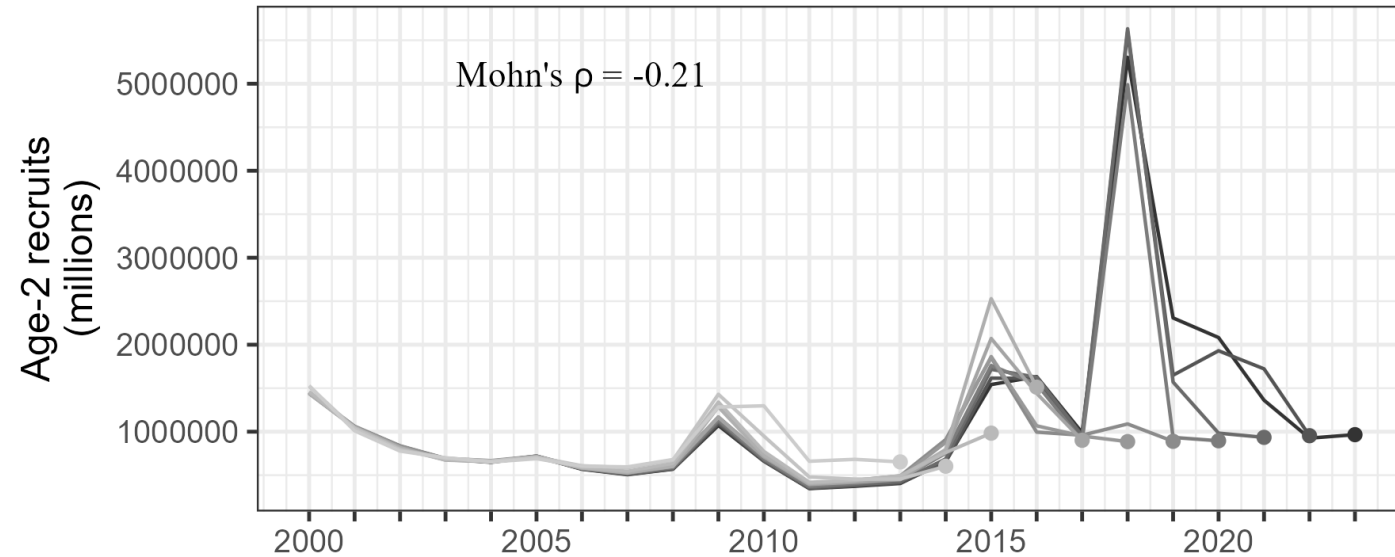
Model
performance



Model slightly
overestimates
biomass

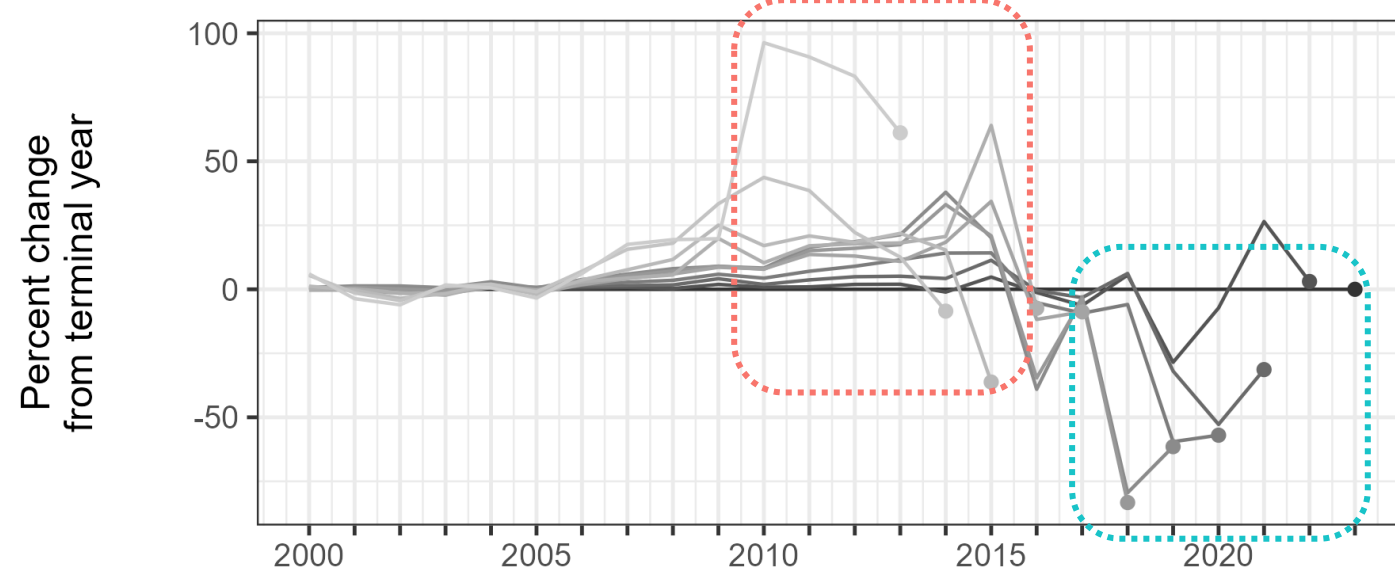
Retrospective

Model performance



Model slightly underestimates recruitment on average

During low recruitment year model overestimates recruits



During high recruitment years model underestimates recruits

Assessment and management steps

To do list:

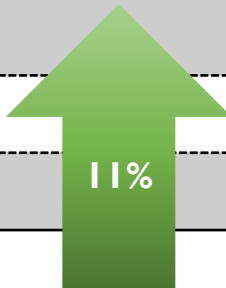
1. Adjust model so that fishery selectivity is estimated and not fixed to federal values
 - a. Will entail how releases are handled in the model
2. Monitoring pot fishery as it develops and adjust model when data become sufficient (likely several years away)



Decrements

1. Bycatch mortality in the IFQ halibut fishery
2. ADF&G longline survey removals
3. Recreational harvest (guided & unguided)
4. Subsistence and personal use harvest
5. Deadloss discard mortality (i.e. sandfleas, sharks, etc.) in directed NSEI commercial fishery

Year		2022	2023	2024
ABC (lbs)		1,443,314	1,573,109	1,809,075
Decrements				
1) Bycatch mortality in halibut fishery		35,406	38,653	77,436
2) ADF&G longline survey removals (excluding catch retained by permit holders)		95,502	75,636	117,849
3) Guided sport harvest		33,990	34,395	41,464
Unguided sport harvest		9,846	2,655	6,085
4) Subsistence and personal use		23,852	18,643	17,245
5) Deadloss discard mortality in sablefish fishery		11,085	9,467	6,553
Total Decrements		209,681	179,450	266,631
AHO		1,233,633	1,393,659	1,542,444
# of Permit Holders		73	73	73
EQS		16,899	19,091	21,129



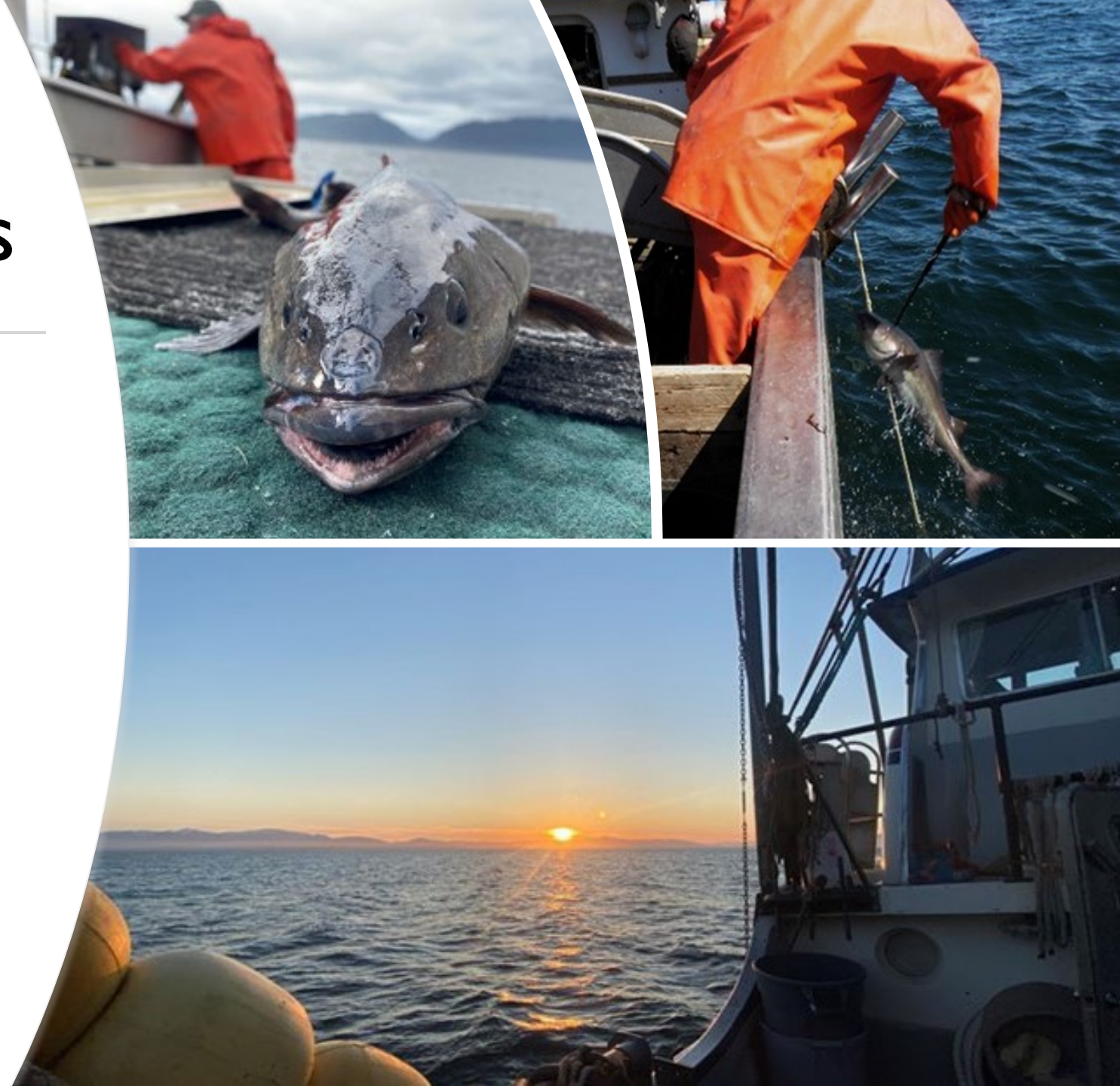
Sablefish
Decrements

2022-2024

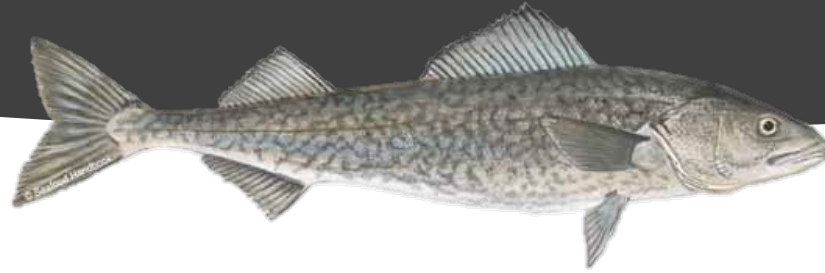


2024 Annual Harvest Objective Next Steps

- Finalizing management and assessment report
- Announcement out in early to mid-June
- Registrations available late July



Question and Answer



Please ask your questions or type them in the chat for discussion.

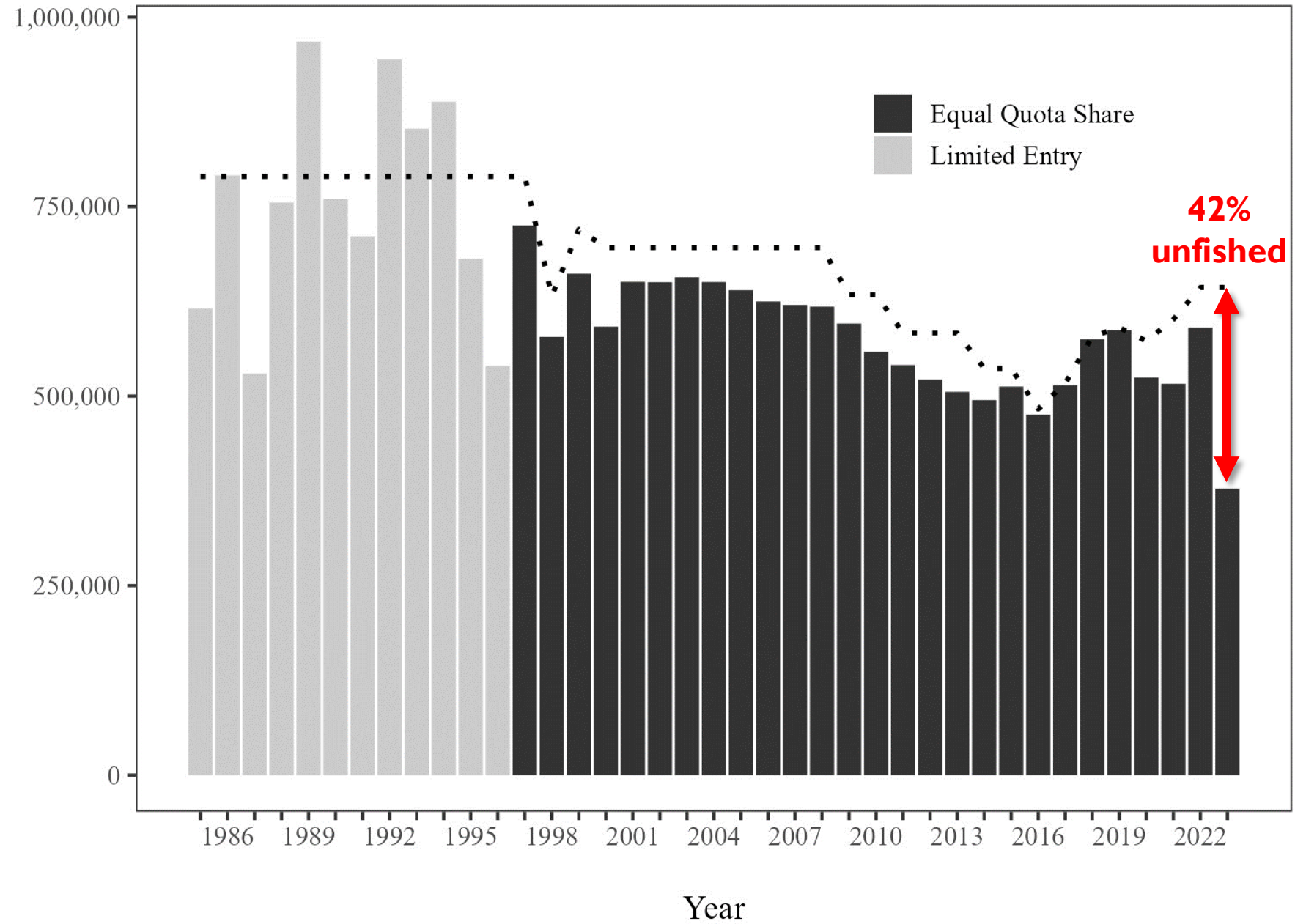
SSEI Sablefish fishery and survey data review



Rhea Ehresmann
Phil Joy

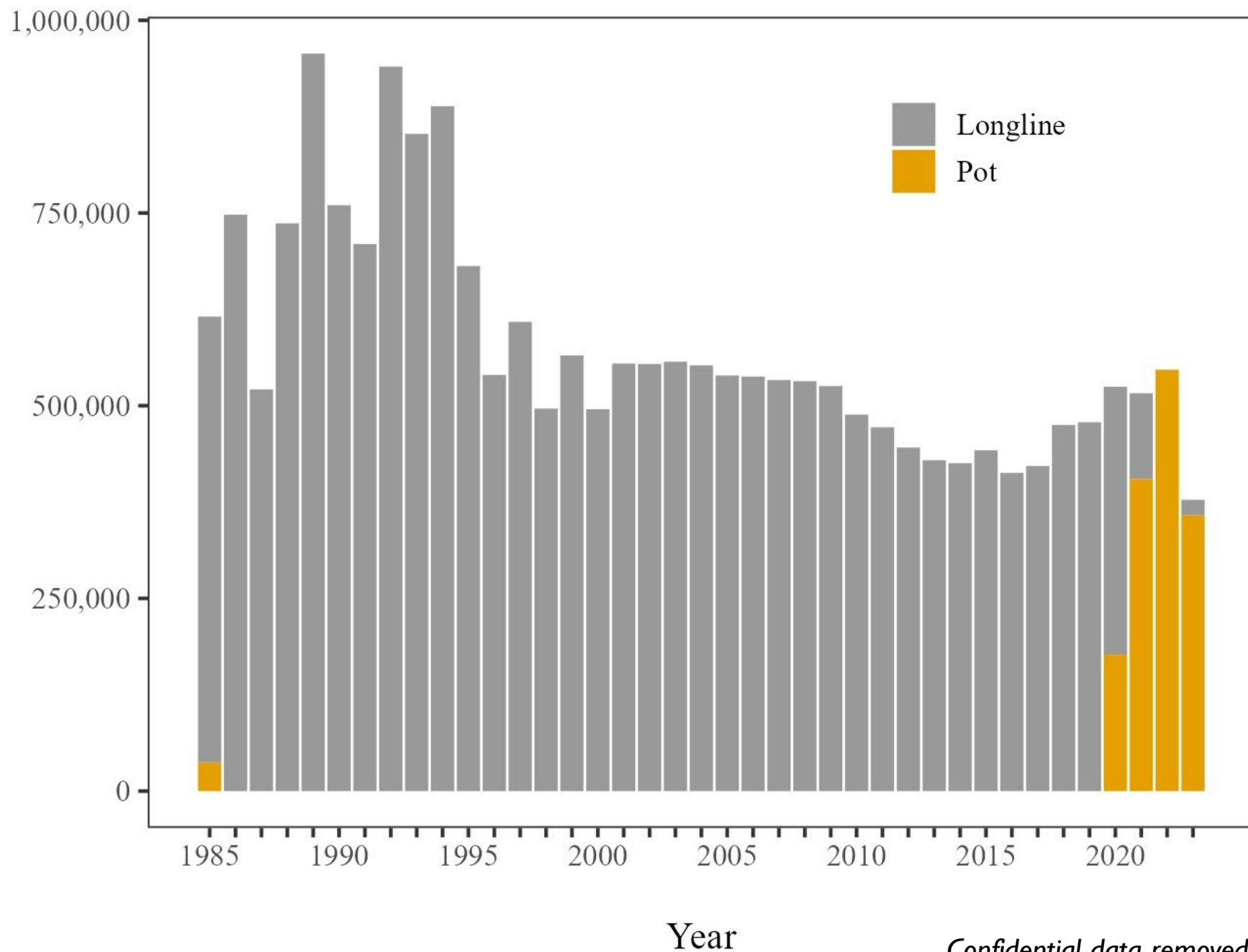
Fishery Harvest

Harvest (round lbs)

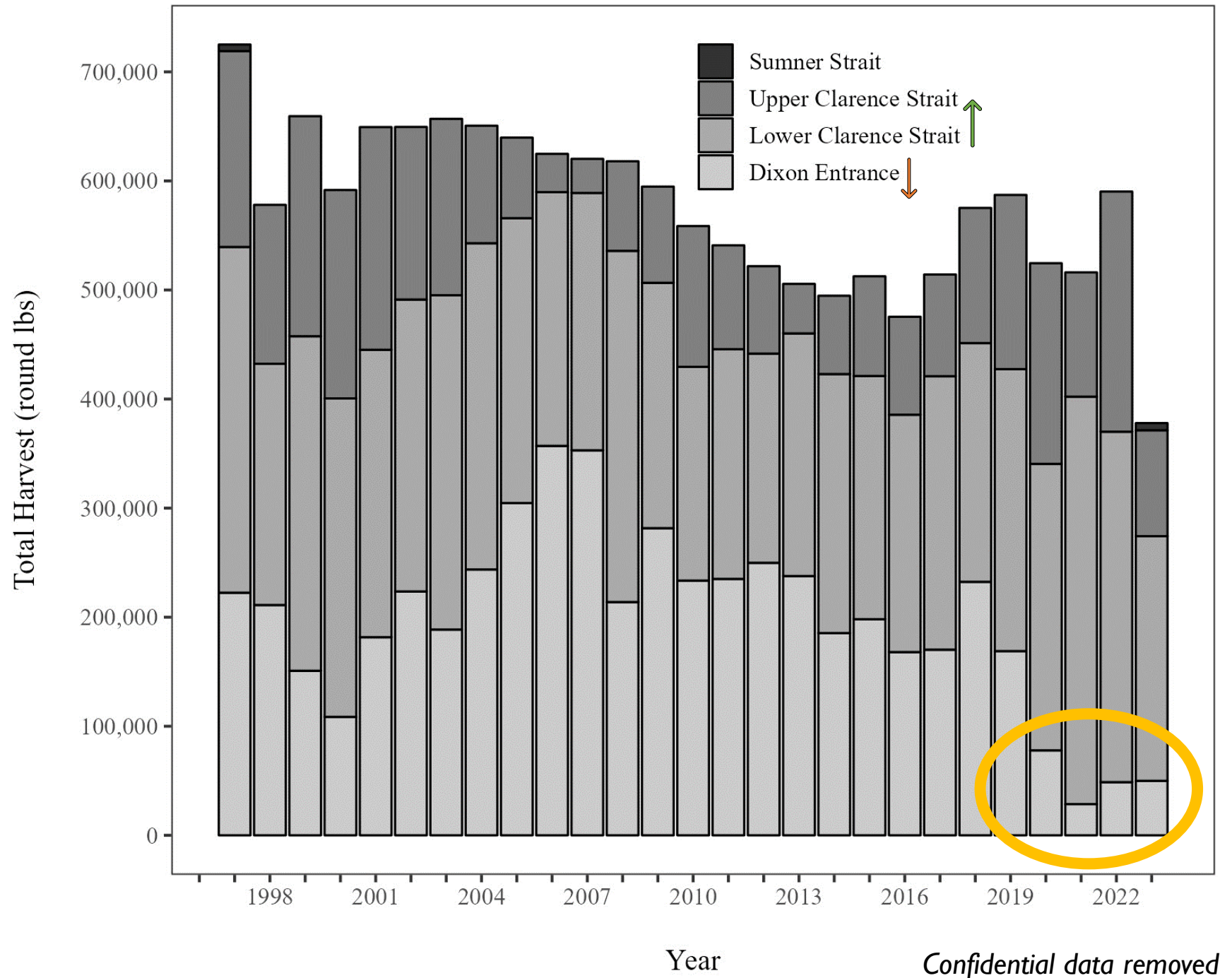


Fishery Harvest by Gear

Harvest (round lbs)

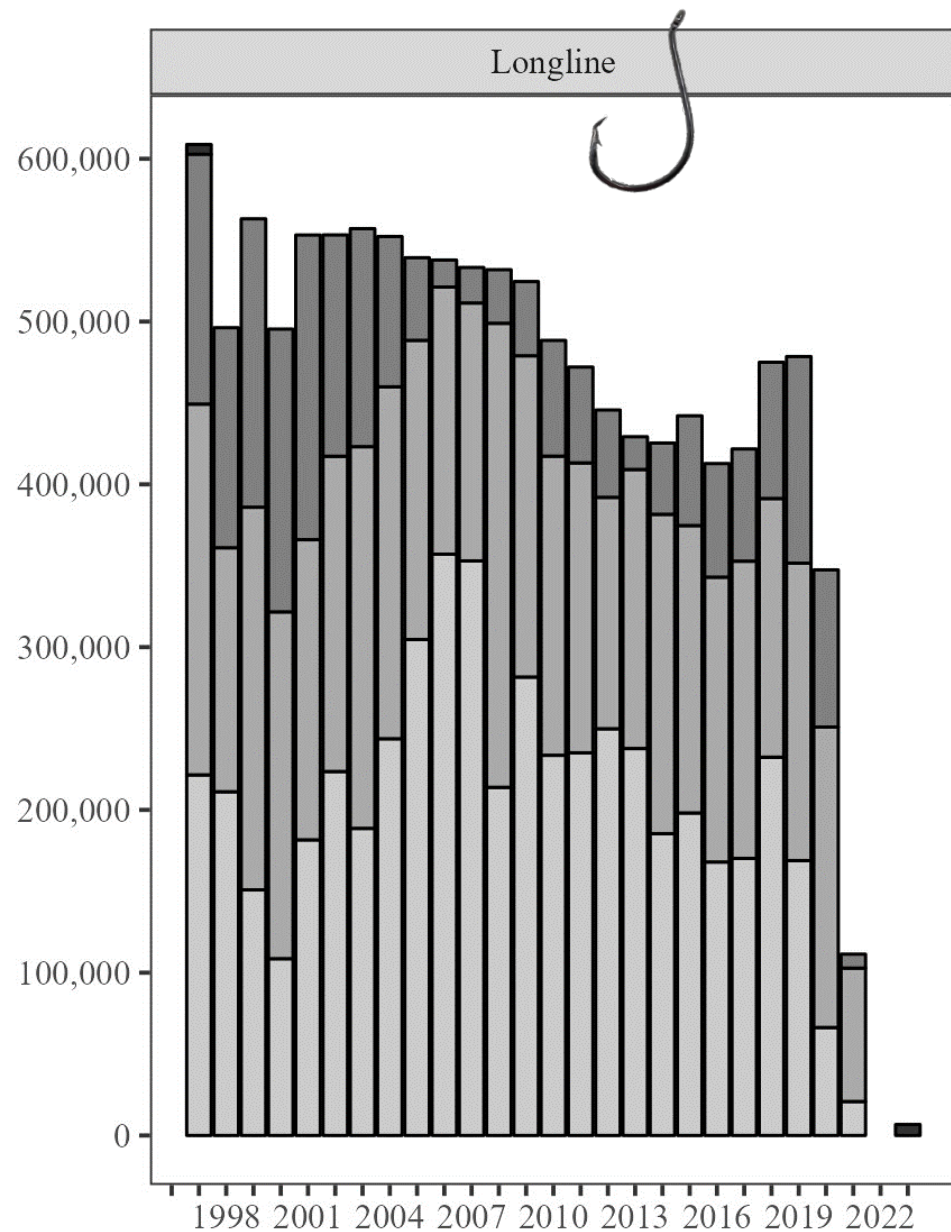


Fishery Distribution

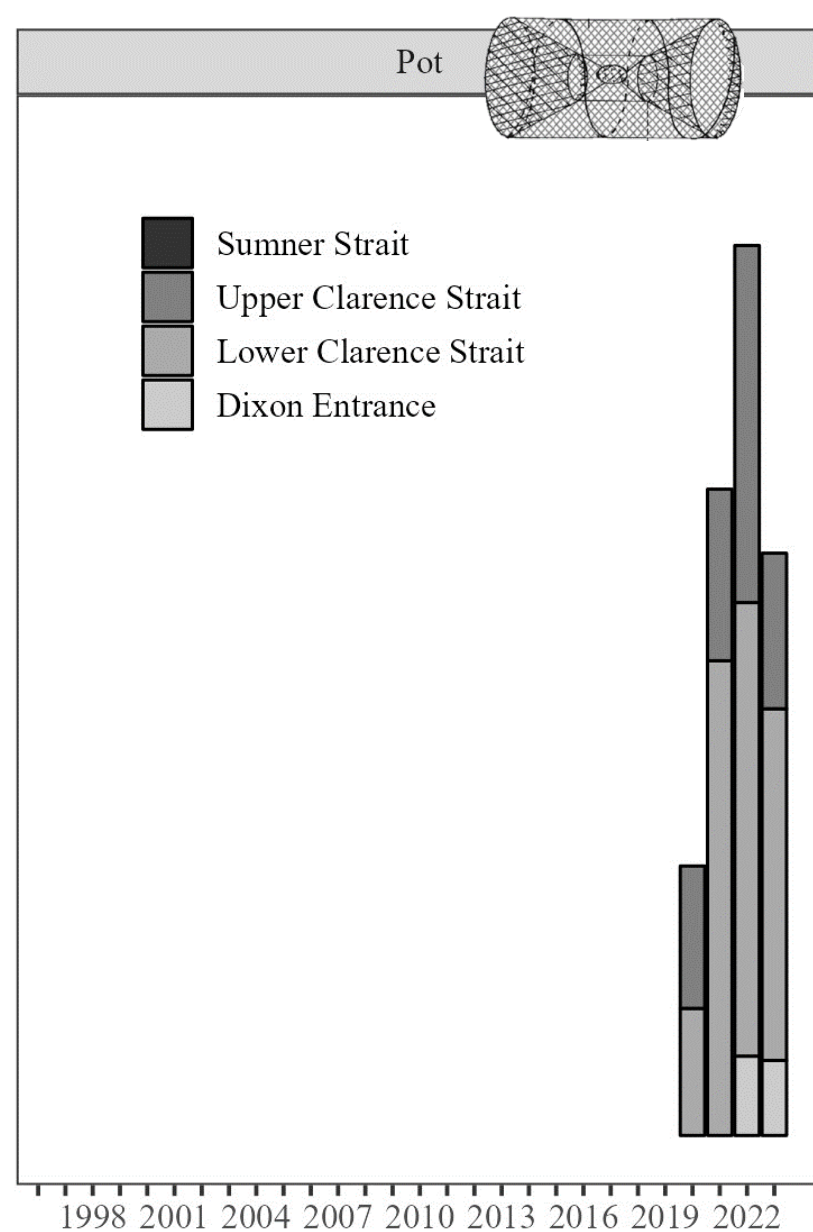


Fishery Distribution by Gear

Total Harvest (round lbs)



Year

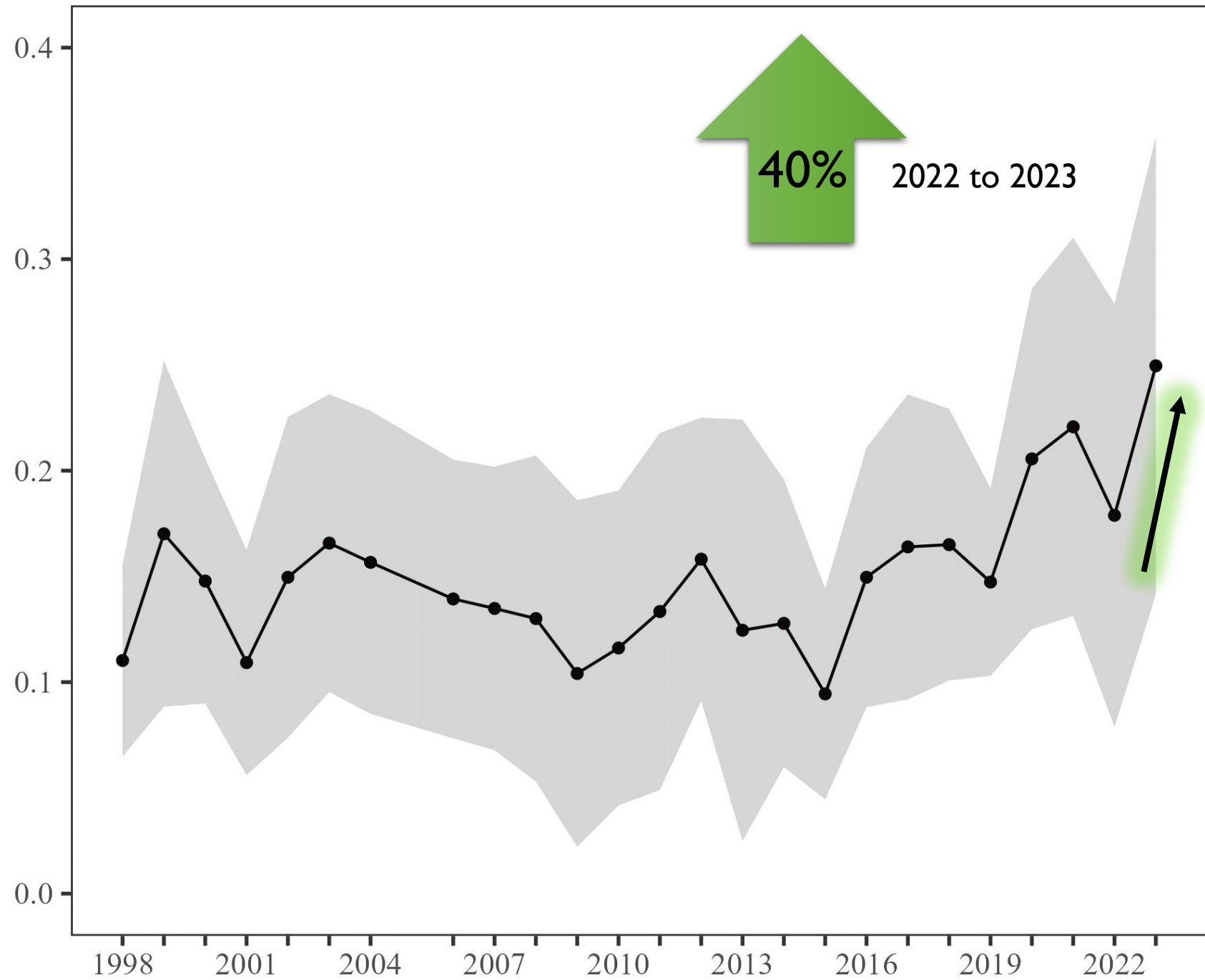


Confidential data removed

Longline Survey Performance



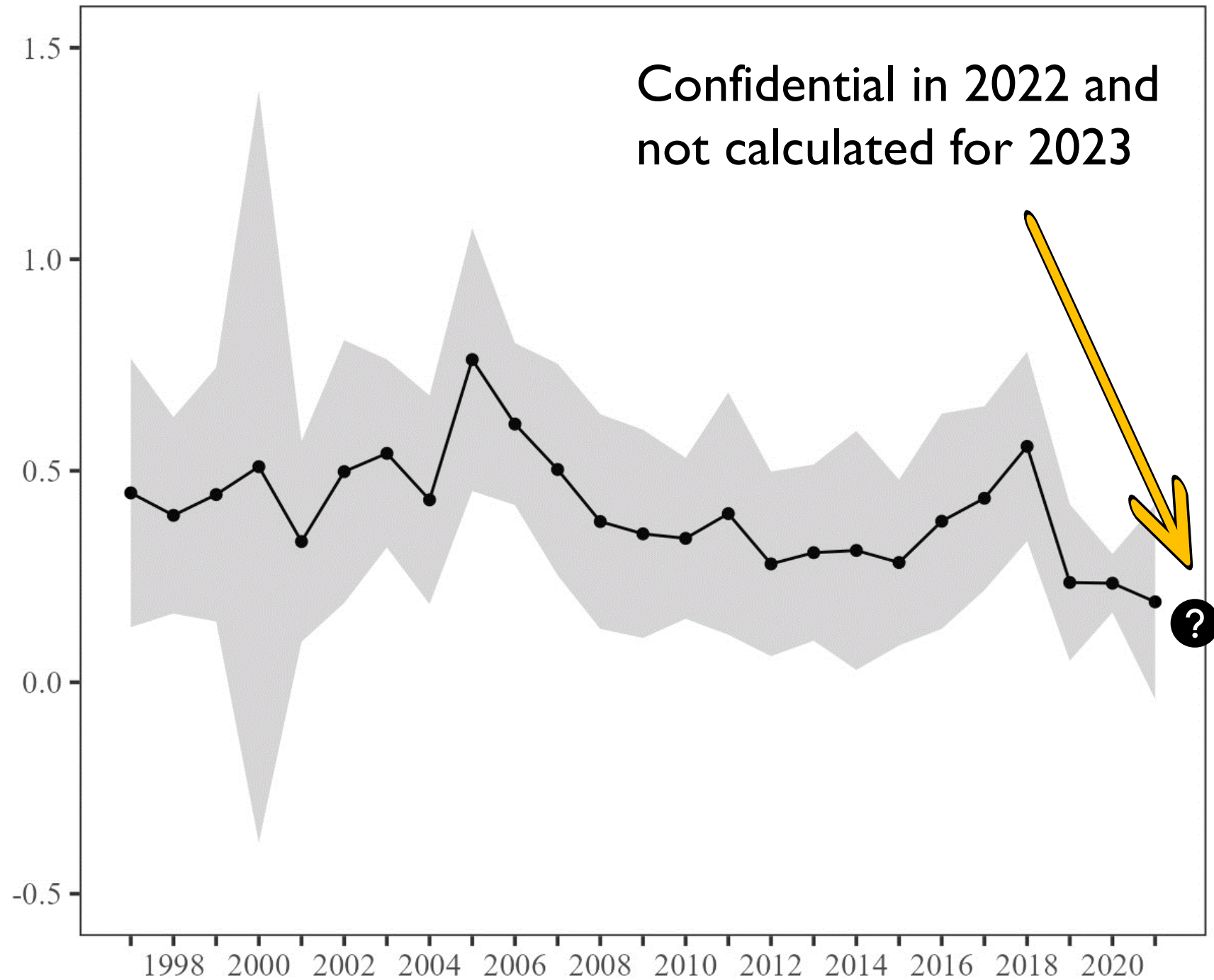
Survey CPUE (number per hook)



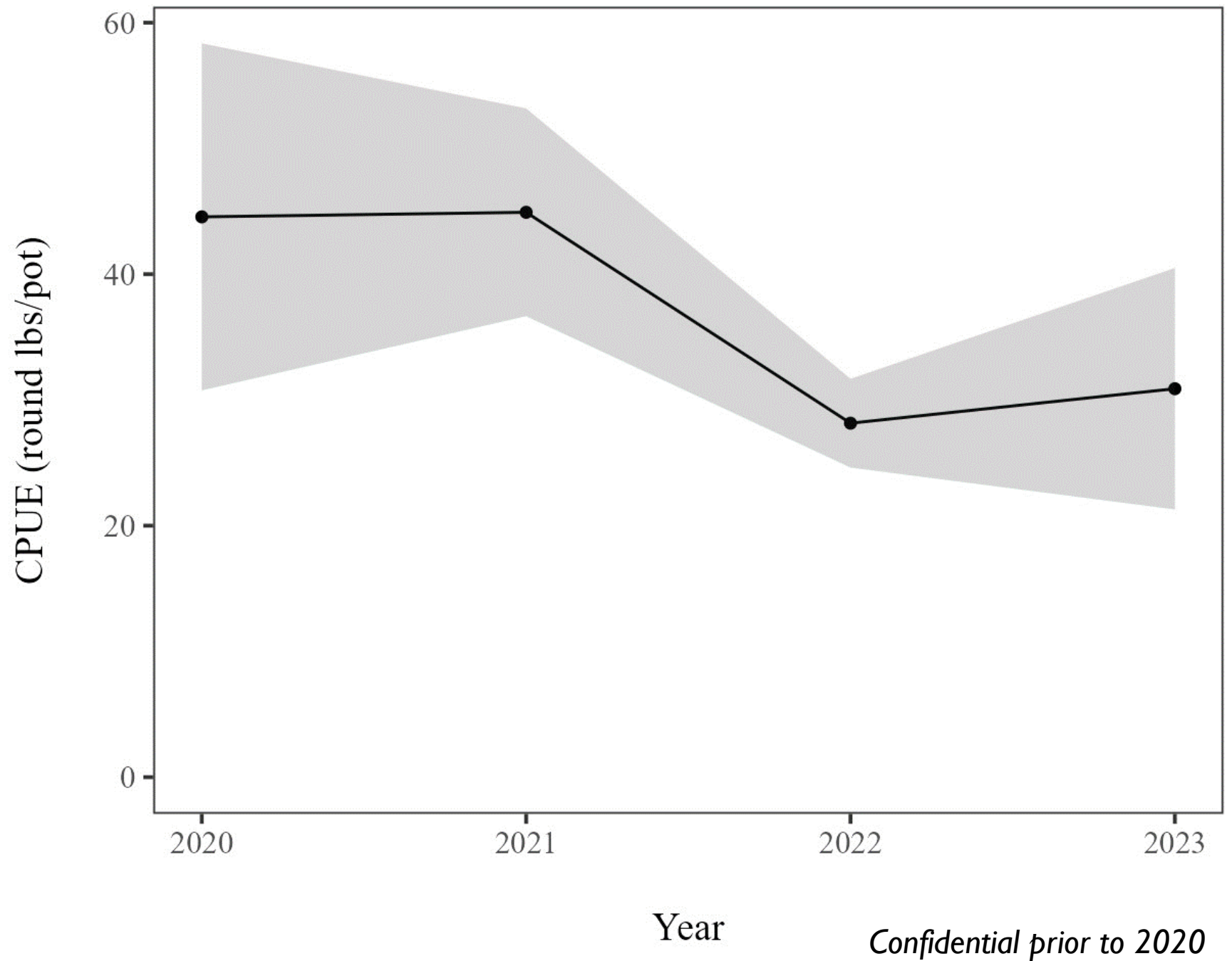
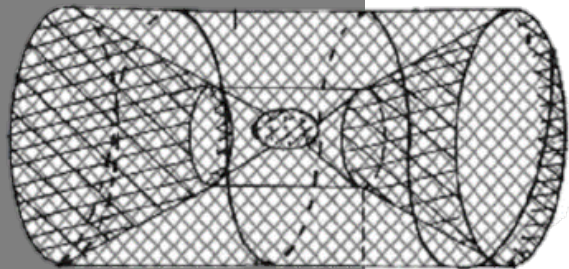
Longline Fishery Performance



Longline Fishery CPUE (lb/hook)

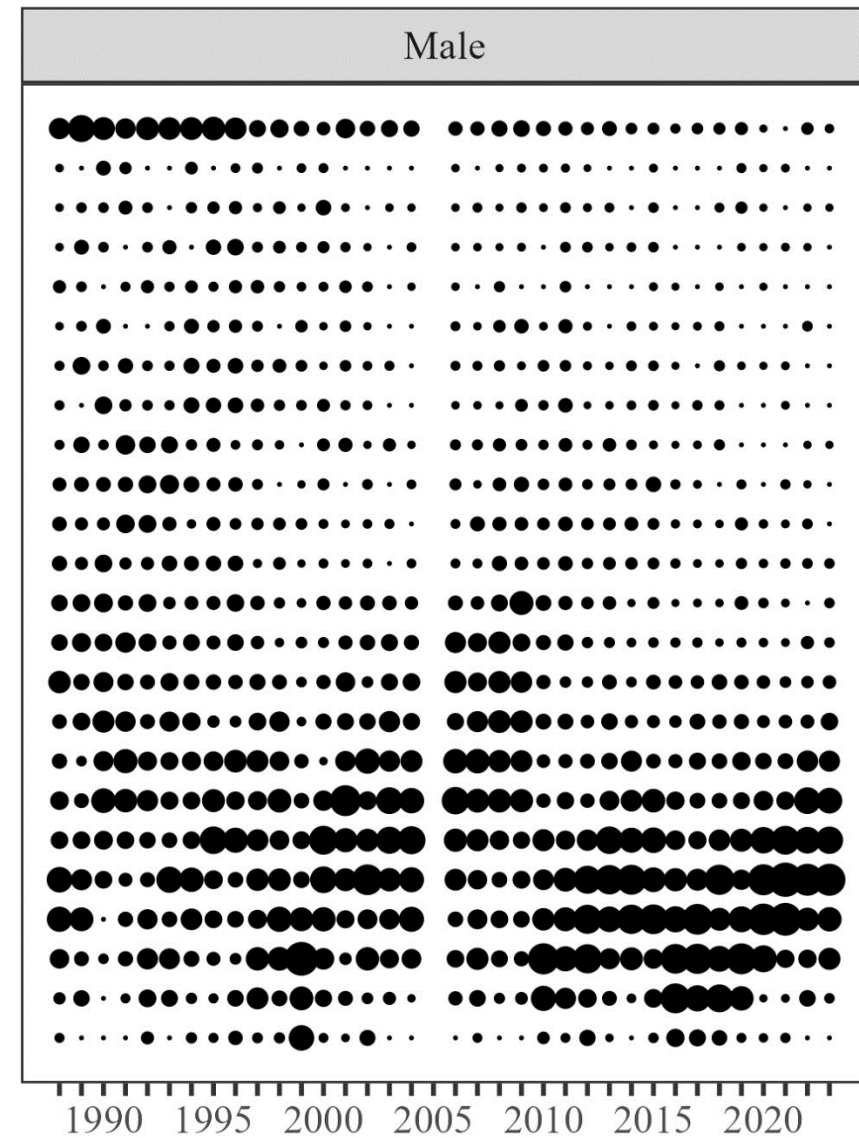
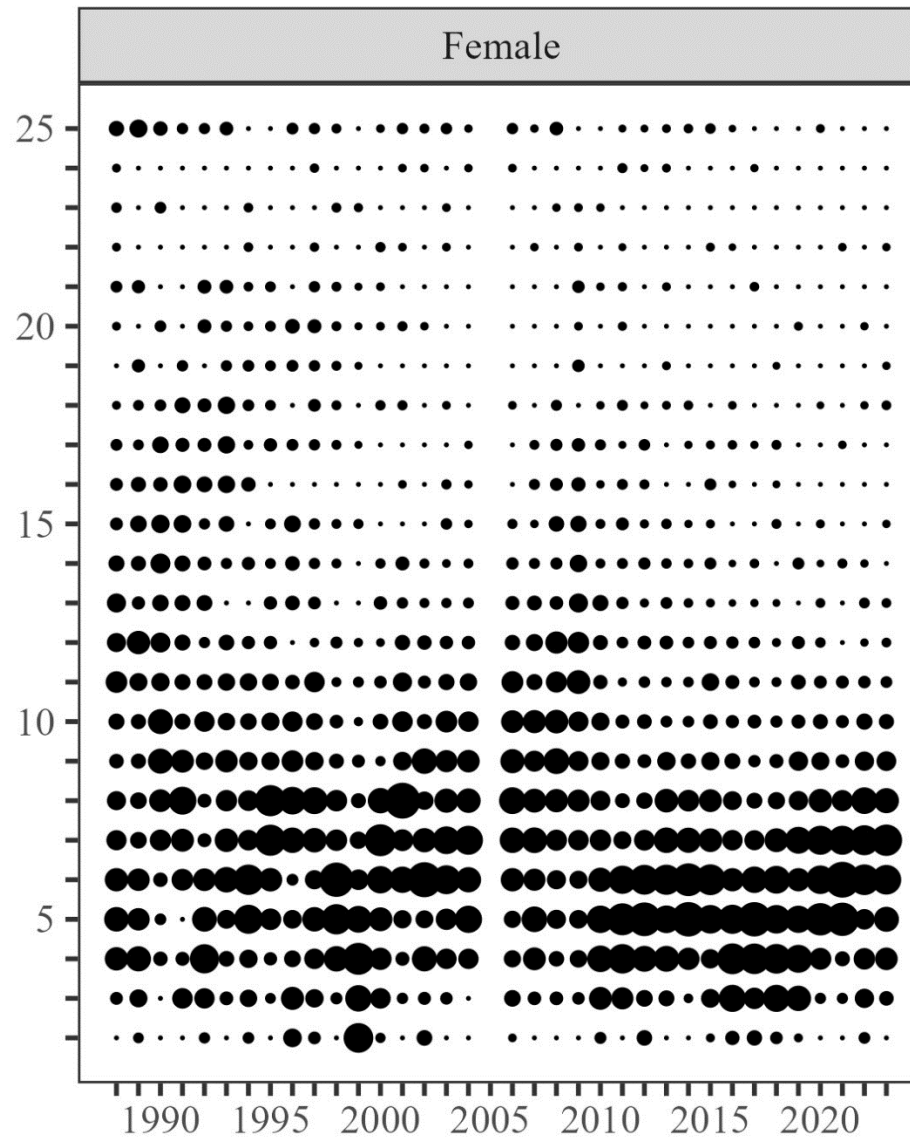


Pot Fishery Performance



Longline Survey Age Structure

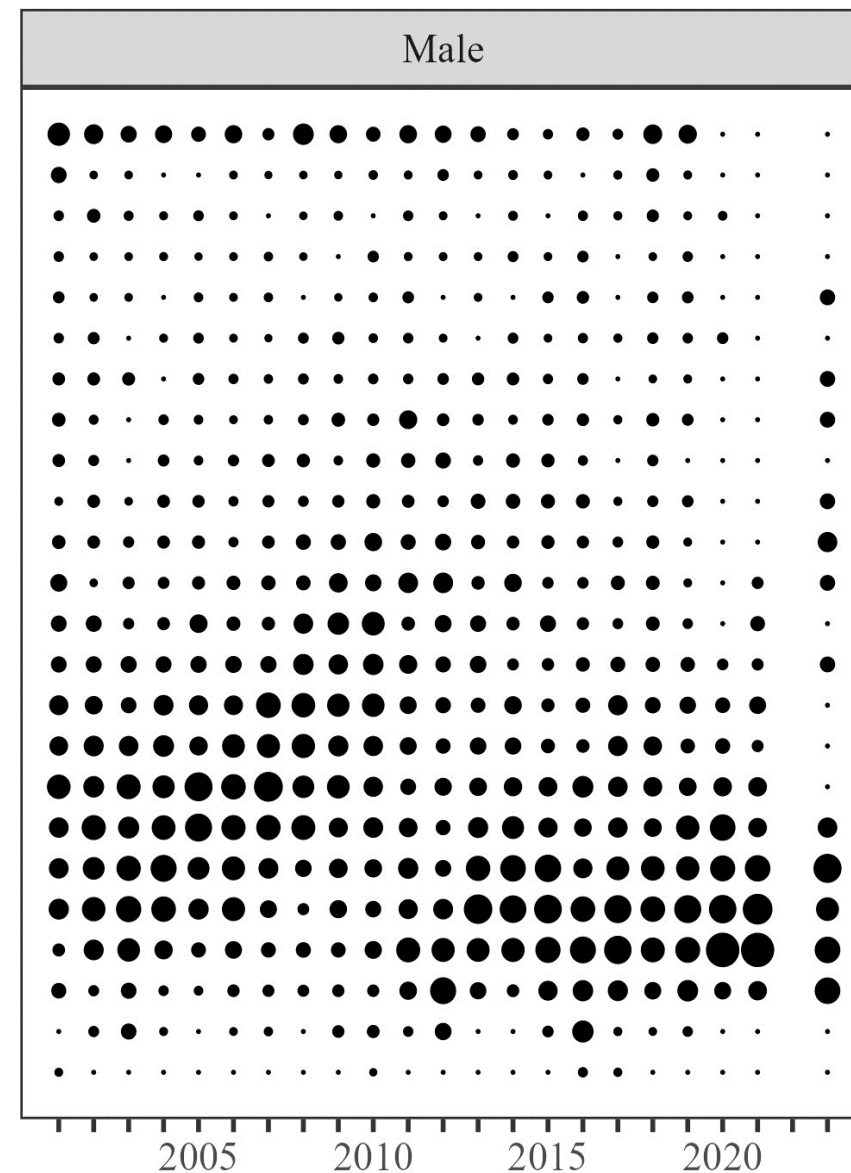
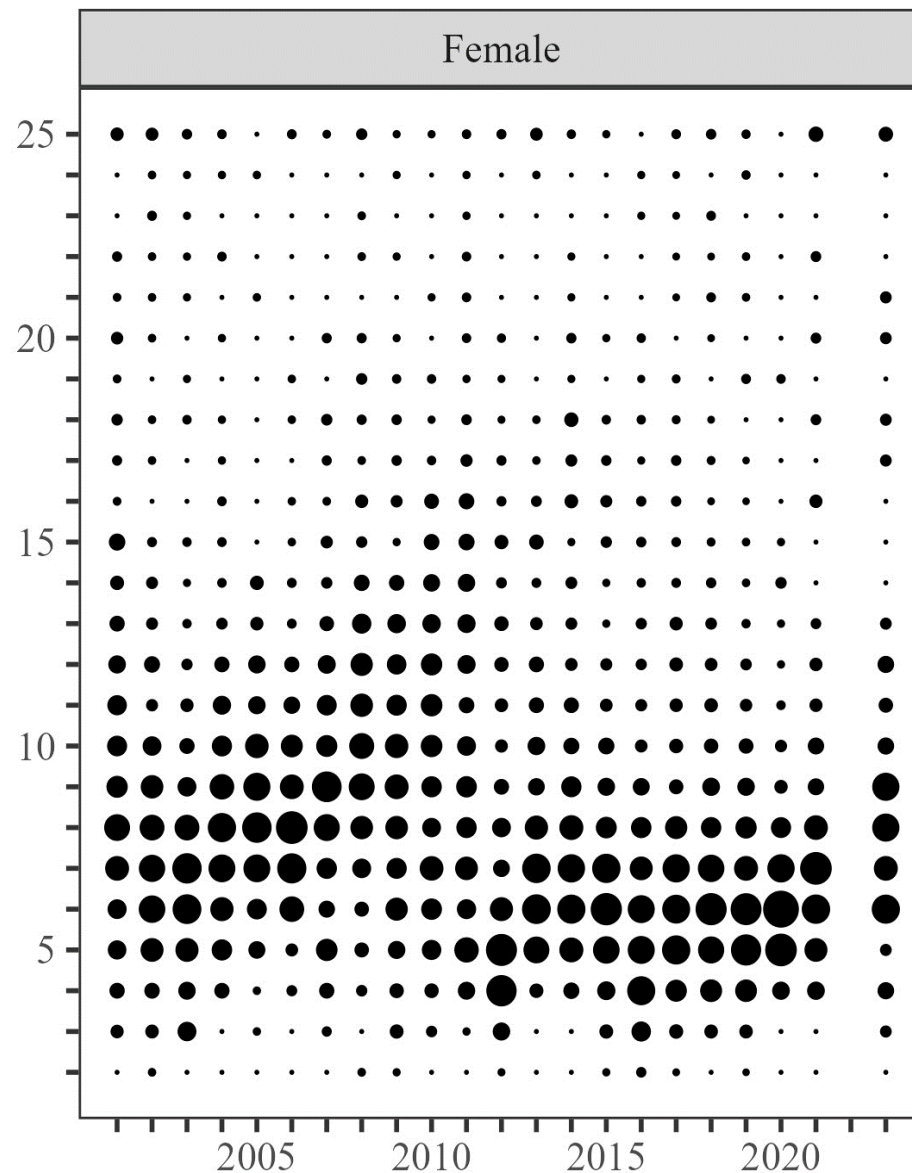
Observed age



Year

Longline Fishery Age Structure

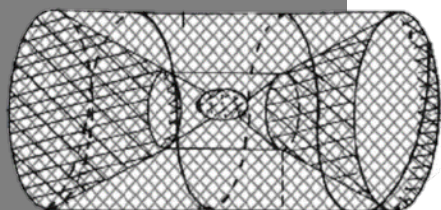
Observed age



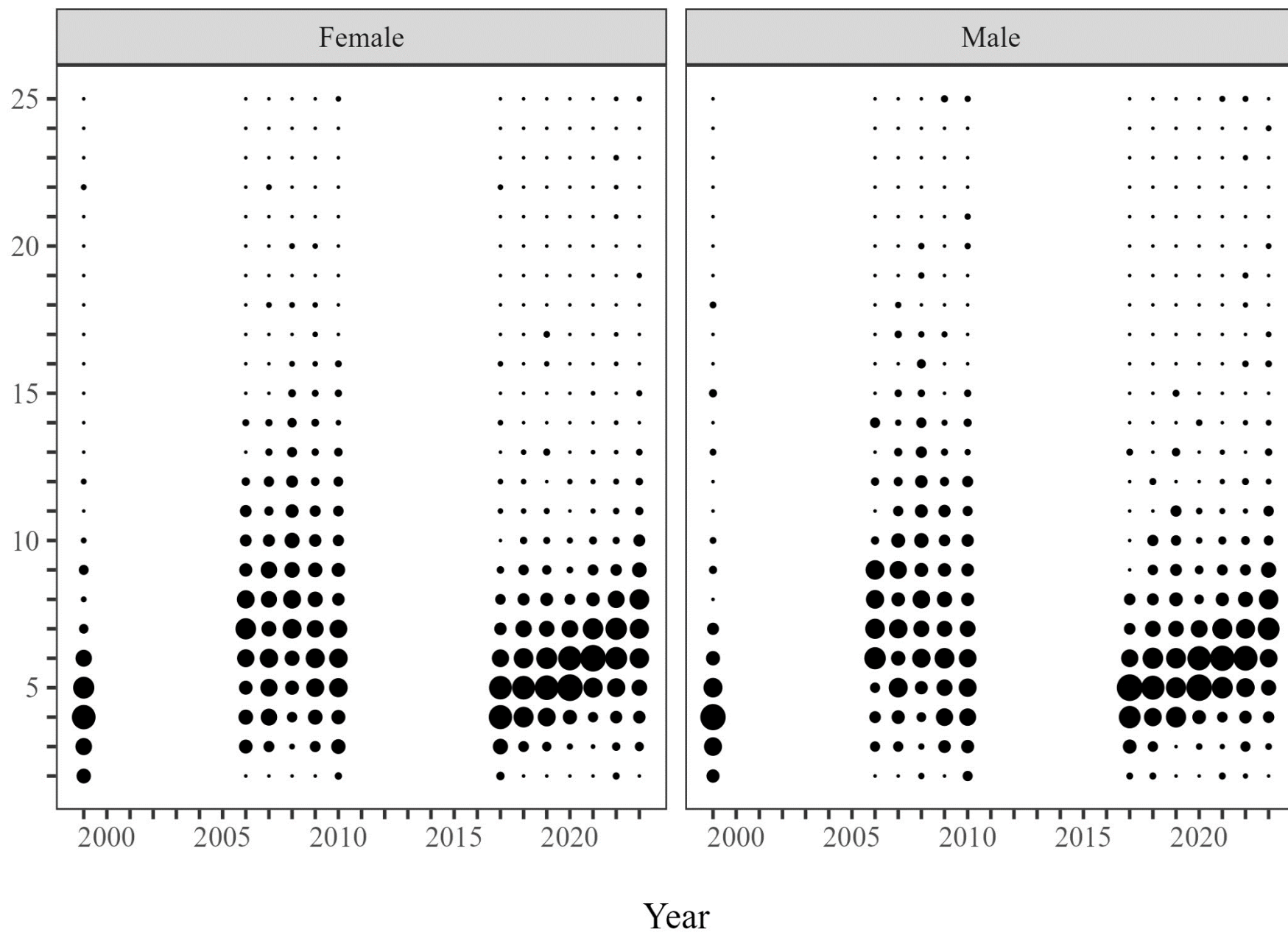
Year

✗ No 2022 samples due to very few longline trips!

Pot Fishery Age Structure



Observed age





2024 Annual Harvest Objective Outlook

See how survey CPUEs look
next week

AA released in early May

PQS forms and registration
packets May 13th

Question and Answer



Please ask your questions or type them in the chat for discussion.



2023 SSEI Pot vs Longline Survey Comparison

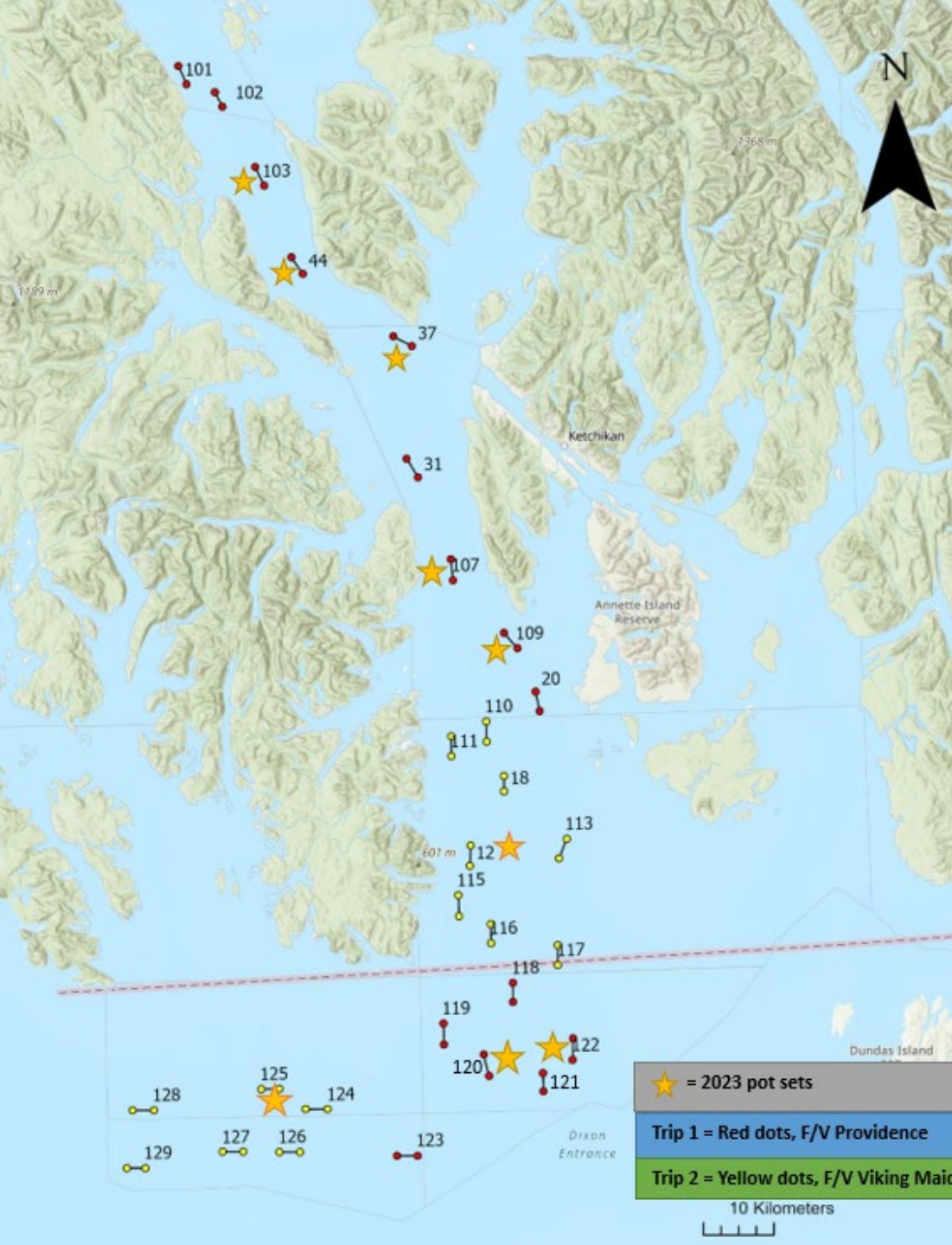
Objectives:

- Compare catch rates, species composition, and length compositions between standard longline survey hook-and-line and longline slinky pot gear.
- Compare small vs large slinky pots for CPUE and length composition.
- Tag sablefish throughout Clarence Strait and Dixon Entrance.

2023 SSEI Pot vs Longline Survey Comparison

Methods:


- Set gear at approximately the same time for each set.
- Similar depths and habitats
- ~ 1nm apart



2023 SSEI Pot vs Longline Survey Comparison

Chartered pot vessel (F/V Lea) fished 9 stations ~ 1nm from the longline survey sets

- 40 slinky pots per set (20 small, 20 large alternating)
- Pot spacing 30 fathoms
- Soak time +7 hours
- Planned for 14 stations but had high catch rates!



8 days at sea

7 days fishing

9 stations completed

360 pots fished

8,174 sablefish caught

3,290 sablefish tagged!

2023 NSEI Pot vs Longline Survey Comparison

Objectives:

- Compare catch rates, species composition, and biological compositions between standard longline survey hook-and-line and longline slinky pot gear.
- Compare small vs large slinky pots for CPUE and length composition.
- Set 30 pots/set and 2 sets/day
- Retained all fish to sample and sell



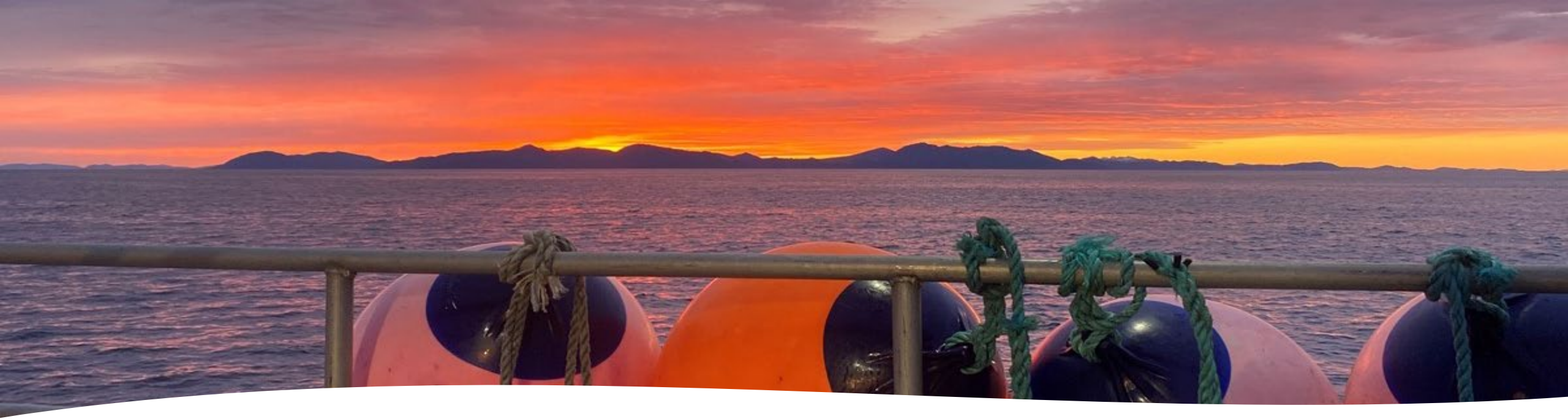
2024 Survey Plans

Repeat pot vs longline side-by-side study in both Clarence and Chatham Strait

- Clarence survey starts fishing next week
- Chatham survey in early August

Stay tuned for results next year!





January 28 – February 9 – Ketchikan, Ted Ferry Civic Center

2025 Board of Fisheries Meeting

- Proposal Book – early August
- Staff Comments – December
- Group order (not finalized) – salmon, herring, misc. shellfish, shellfish, groundfish
- Comment opportunities:
 - Public written comment – before meeting (deadline will be announced)
 - Public testimony (3 minutes)
 - Committee meeting



2025 Board of Fisheries Meeting

- **ADF&G Proposals**

- Pot escape ring reduction to 3 ½ inches for subsistence, personal use, and commercial sablefish fisheries
- Clarify regulations regarding subsistence, personal use, and commercial fisheries groundfish fisheries in NSEI and SSEI – subsistence and PU separate from commercial
- EGOA groundfish logbook field requirements
- Rockfish bycatch landing requirements – overage documentation



Acknowledgements

Thank you to:

- Groundfish Project Staff
- Support from other ADF&G project staff
- Survey vessel crews
 - F/V Providence
 - F/V Viking Maid
 - F/V Ilona B
 - F/V Ida June
 - F/V Lea
 - F/V Tammy Lin
- NOAA scientists
- Processors
- ALFA EXPO

See you next year!

