

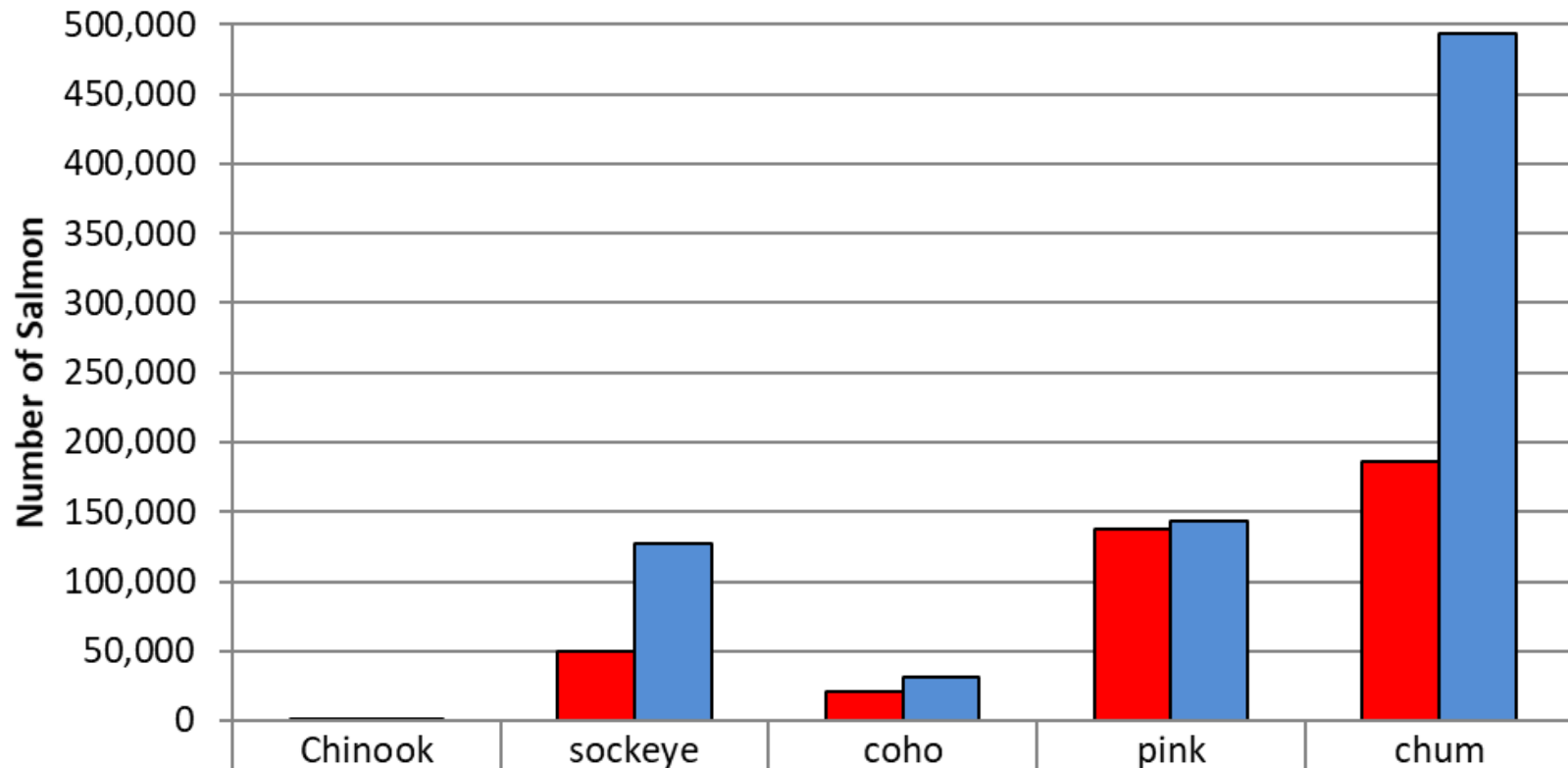
District 11 Drift Gillnet Fishery Taku Inlet, Stephens Passage, and Port Snettisham 2021 Management Summary



Scott Forbes
Gillnet Task Force Meeting
December 1, 2021
Centennial Hall - Juneau



2021 District 11 Drift Gillnet Harvest and 10-year Average



	Chinook	sockeye	coho	pink	chum
2021	688	49,337	20,787	137,319	185,709
10-year Average*	1,238	127,721	30,819	143,007	493,629

*from SW25-42

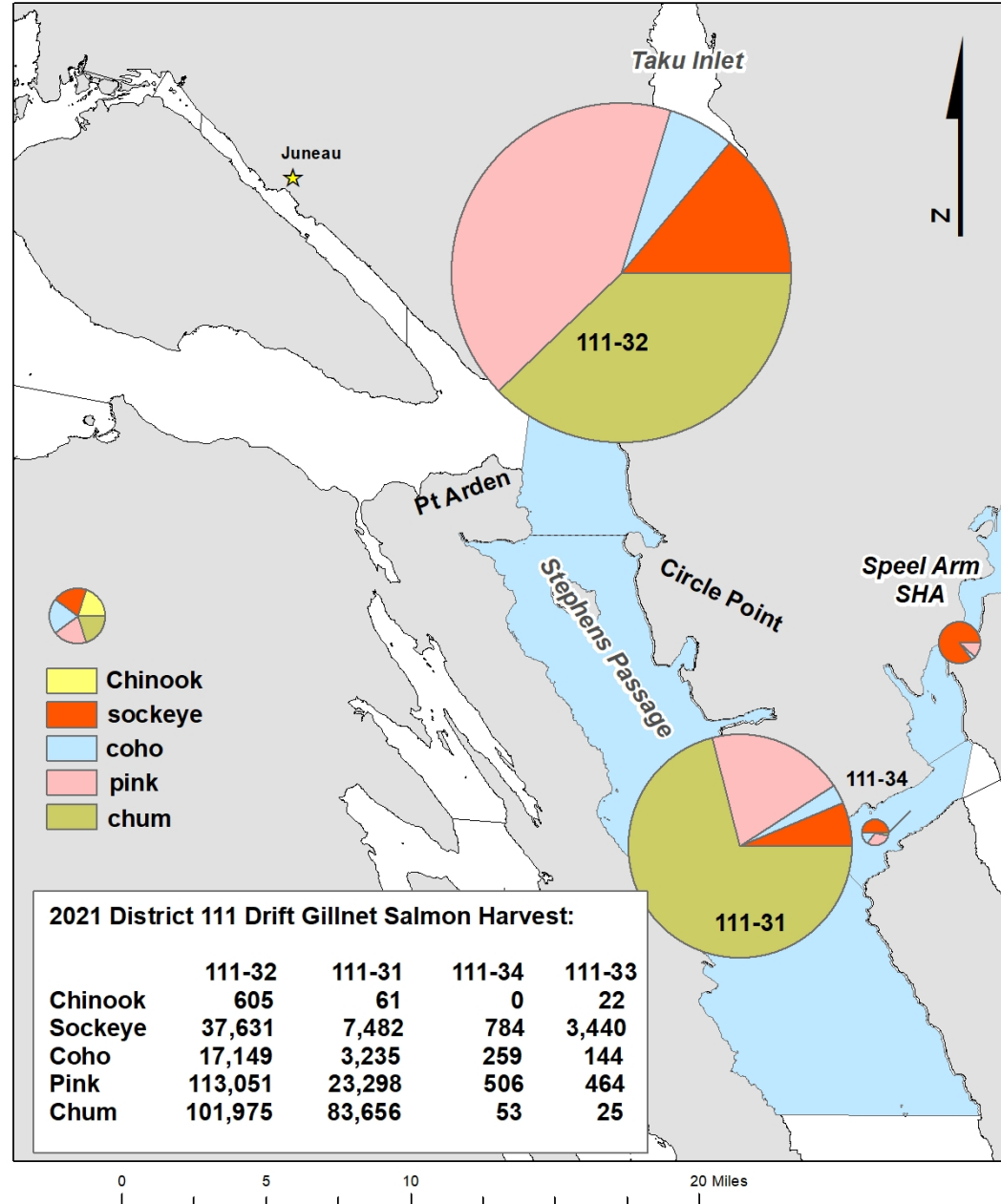
2021 District 11 Drift Gillnet Weekly Time, Effort, and Harvest

	<u>Stat Week</u>	<u>Days Open</u>	<u>Boats</u>	<u>Boat Days</u>	<u>Chinook</u>	<u>Sockeye</u>	<u>Coho</u>	<u>Pink</u>	<u>Chum</u>
Sockeye Management	26	2	16	32	123	321	0	3	85
	27	2	19	38	183	3,816	2	1,012	4,417
	28	2	48	96	190	7,875	15	11,044	34,869
	29	2	88	176	52	5,552	27	18,507	48,174
	30	3	98	294	53	9,075	429	54,291	66,310
	31	5	79	395	47	10,379	1,850	28,371	26,775
	32	5	36	180	14	5,029	1,852	17,866	4,418
Coho Management	33	4	16	64	0	1,496	590	3,250	295
	34	3	16	54	5	3,479	679	2,164	63
	35	3	18	54	14	1,361	2,620	716	119
	36	4	23	96	5	581	5,893	75	89
	37	4	24	96	2	352	4,665	20	82
	38	4	15	60	0	21	1,730	0	11
	39	4	9	36	0	0	291	0	0
	40/41	8	4	16	0	0	144	0	2
	42	closed							
	Fishery Total	55	132	1,687	688	49,337	20,787	137,319	185,709
2011-2020 Average*	50	188	2,985	1,238	127,721	30,819	143,007	493,629	
2021 % Average	110%	70%	57%	56%	39%	67%	96%	38%	

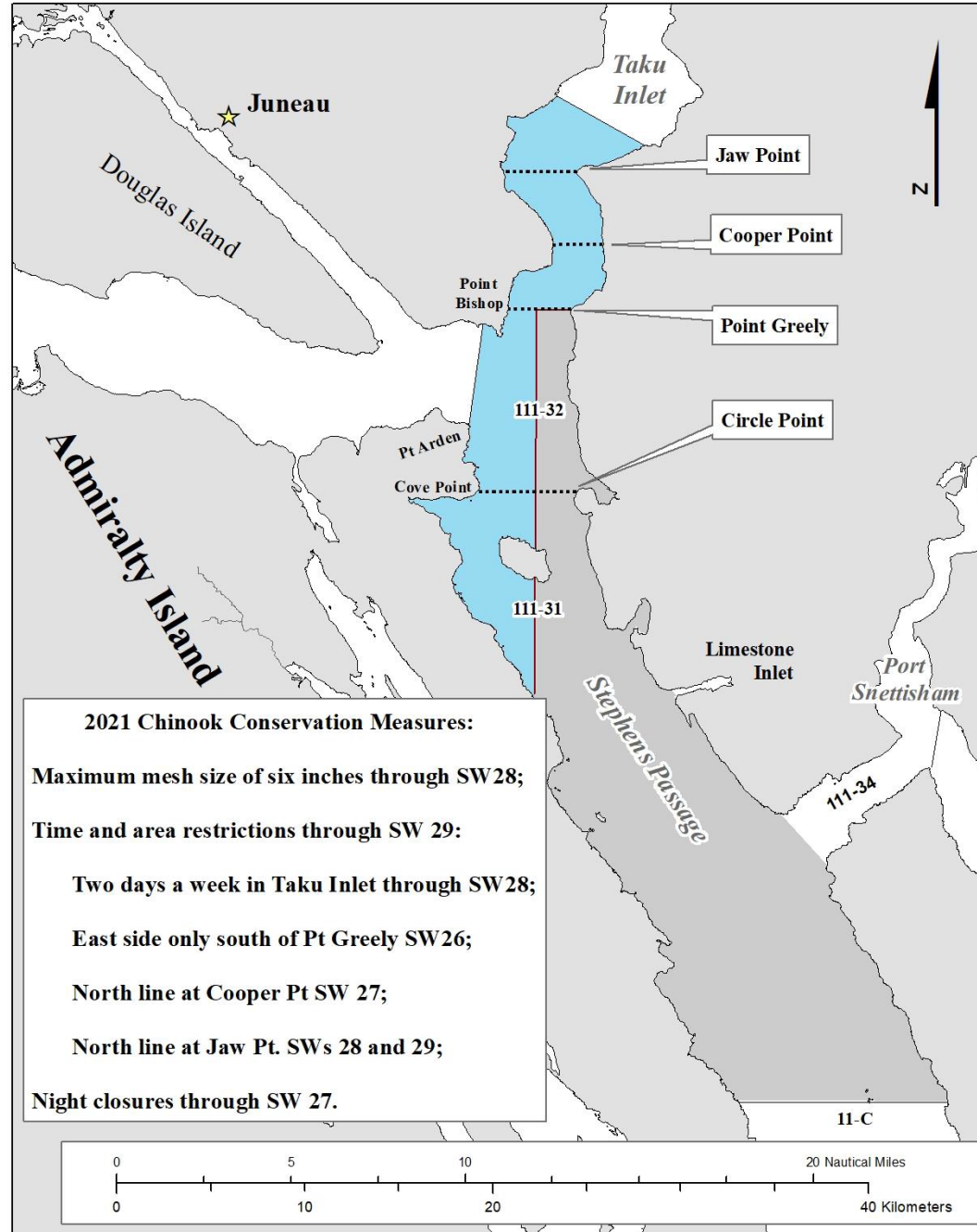
*All averages from SW 25-42



2021 District 111 Drift Gillnet Harvest by Species

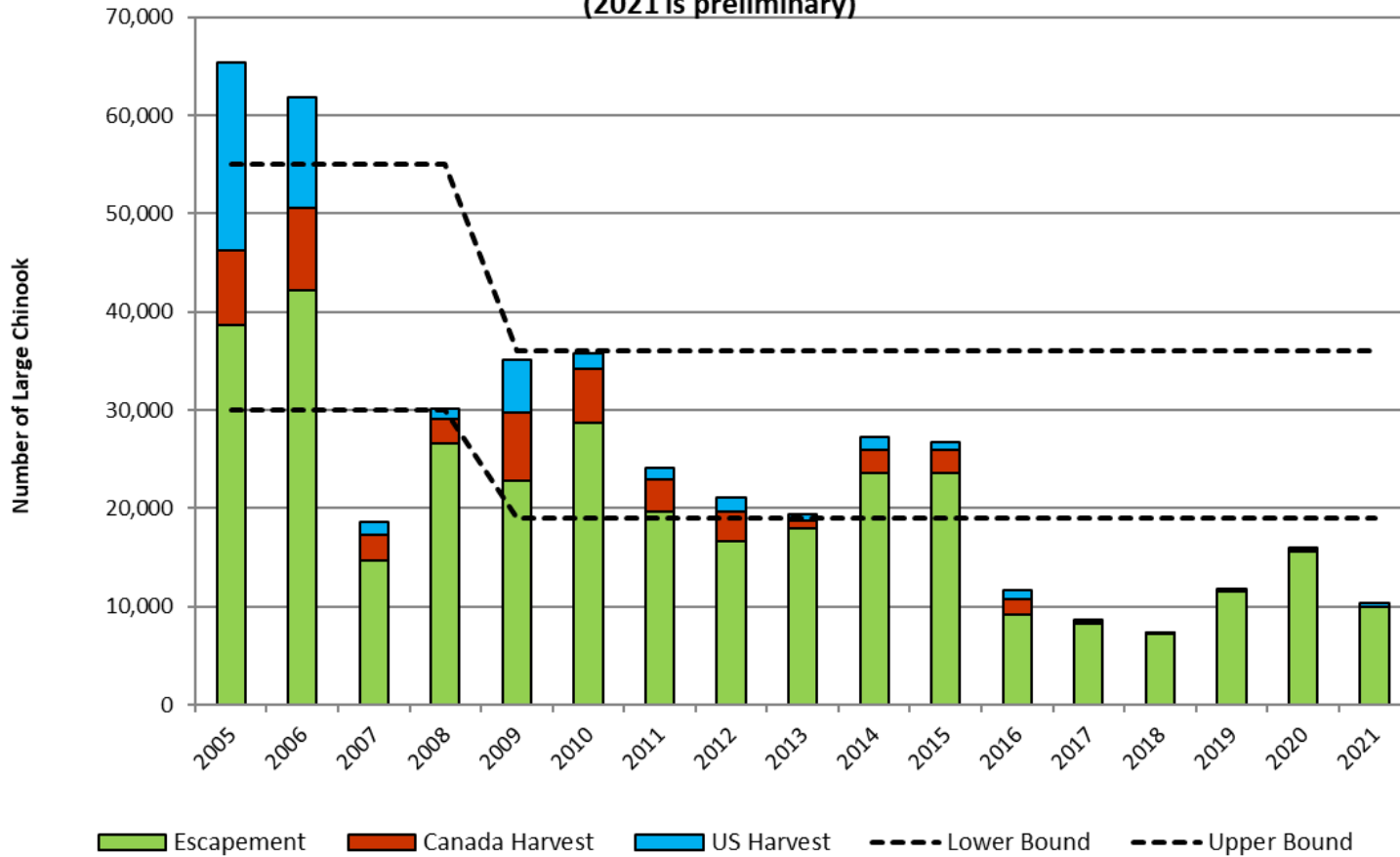


2021 District 111 Taku River Chinook Salmon Conservation



Taku River Large Chinook Salmon Terminal Run Size, 2005-2021

(2021 is preliminary)



2021 Taku River Large Chinook Salmon

Terminal Run forecast: 10,300 fish

Terminal Run estimate: *11,000* fish*
(* preliminary)

U.S. GSI-based harvest:

Gillnet = 151 fish

Sport = 169 fish

PU = 15 fish

Canada harvest:

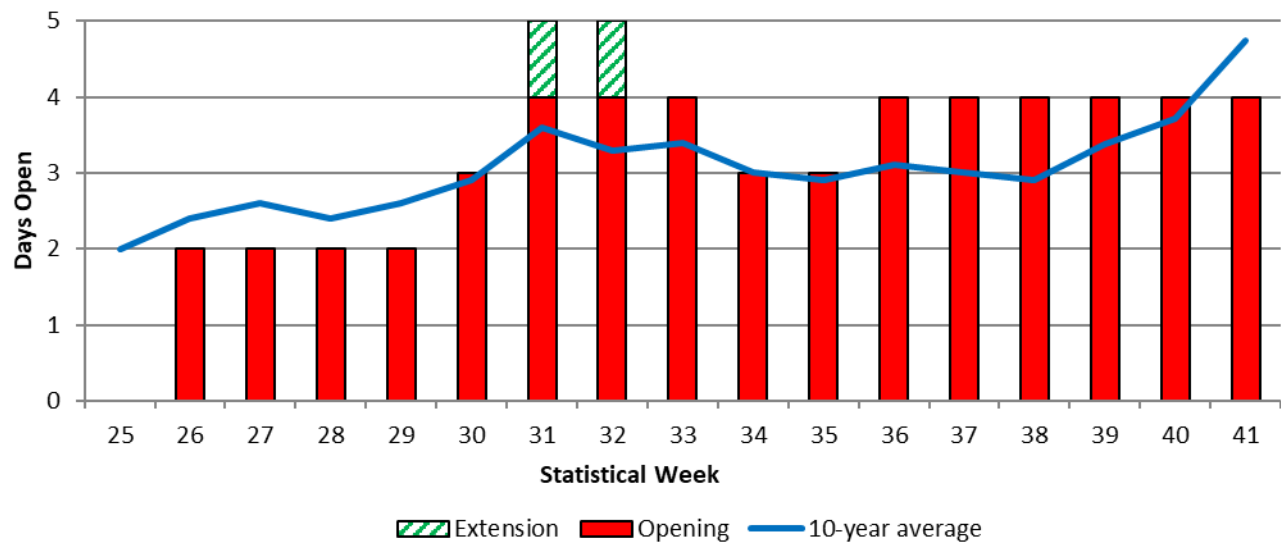
Aboriginal = ? (avg = 70 fish)

Comm. release = 270 fish

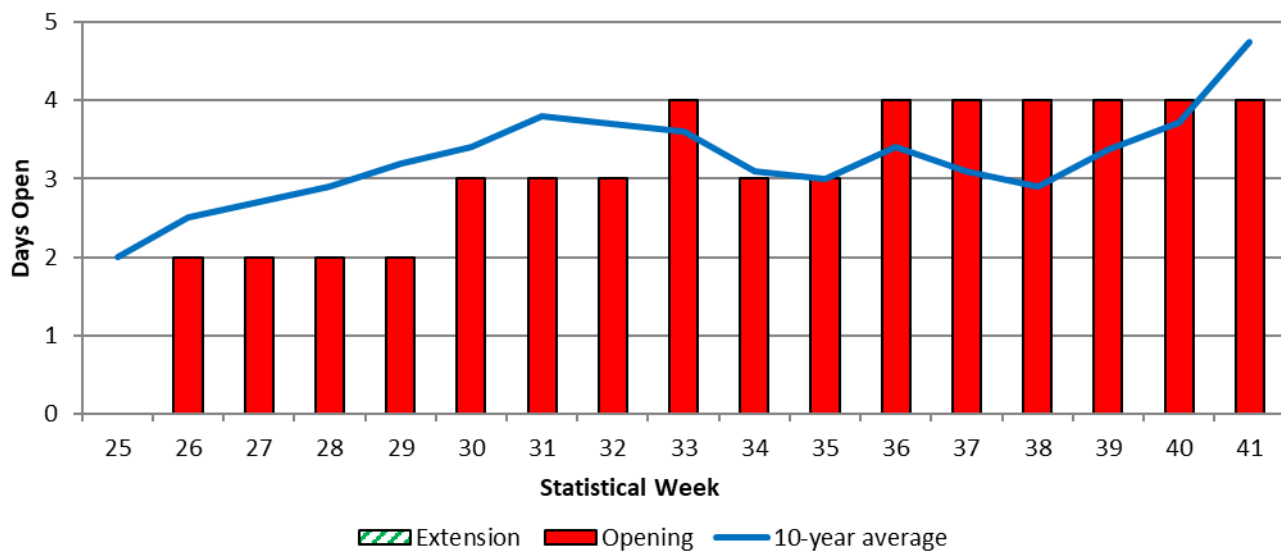




2021 Taku Inlet Weekly Drift Gillnet Days Open

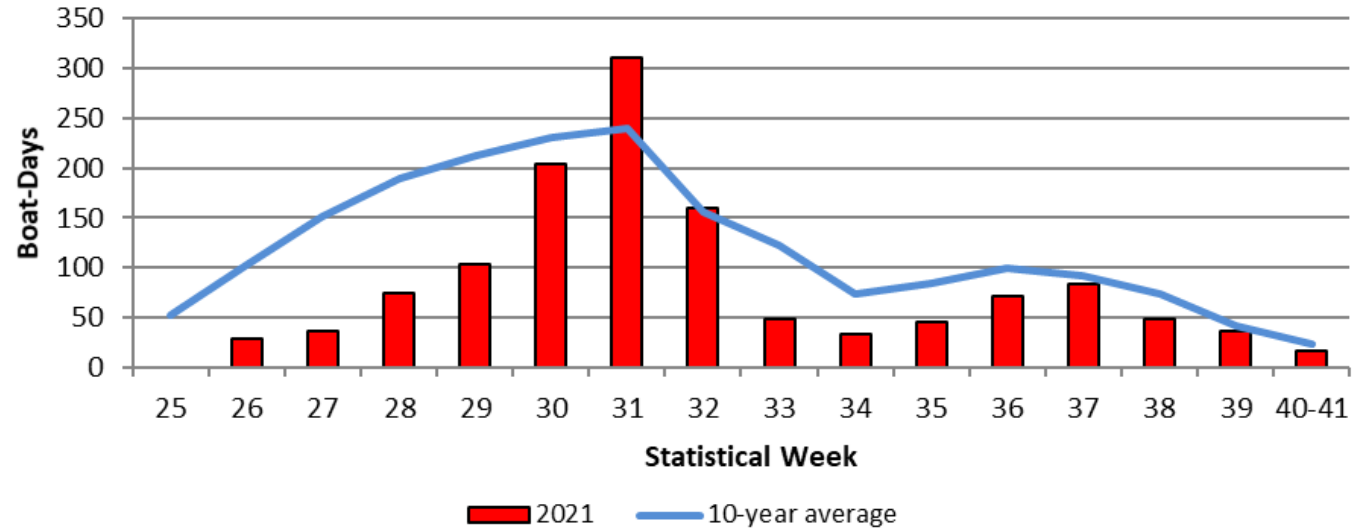


2021 Stephens Passage Weekly Drift Gillnet Days Open

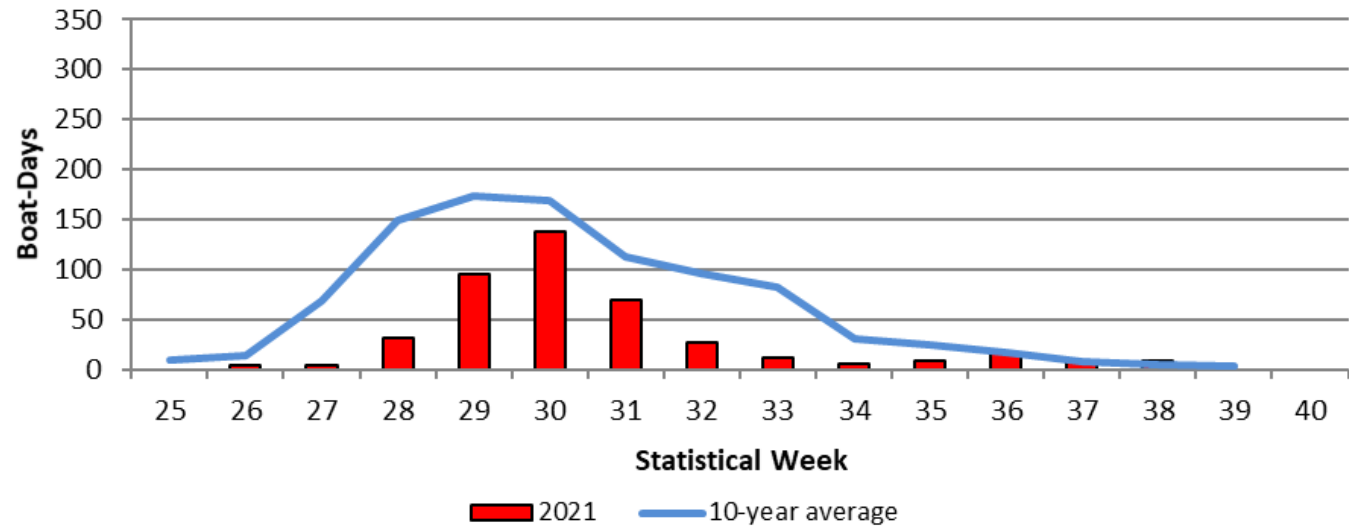




2021 Taku Inlet Weekly Drift Gillnet Boat-Days

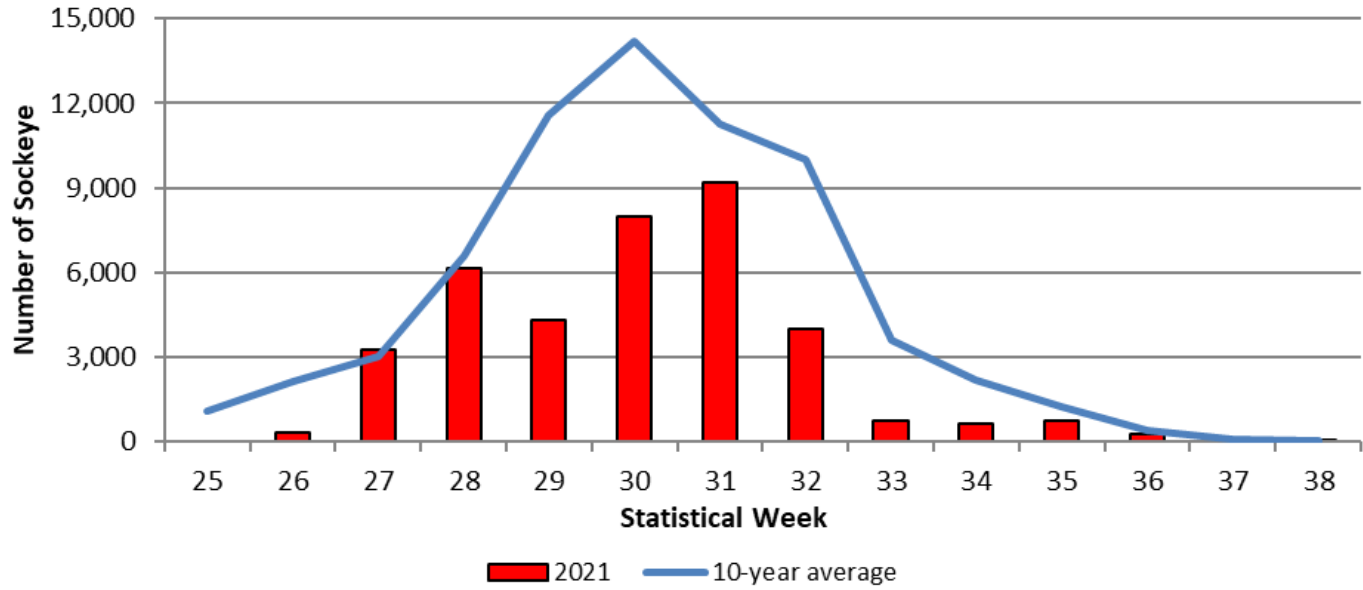


2021 Stephens Passage Weekly Drift Gillnet Boat-Days

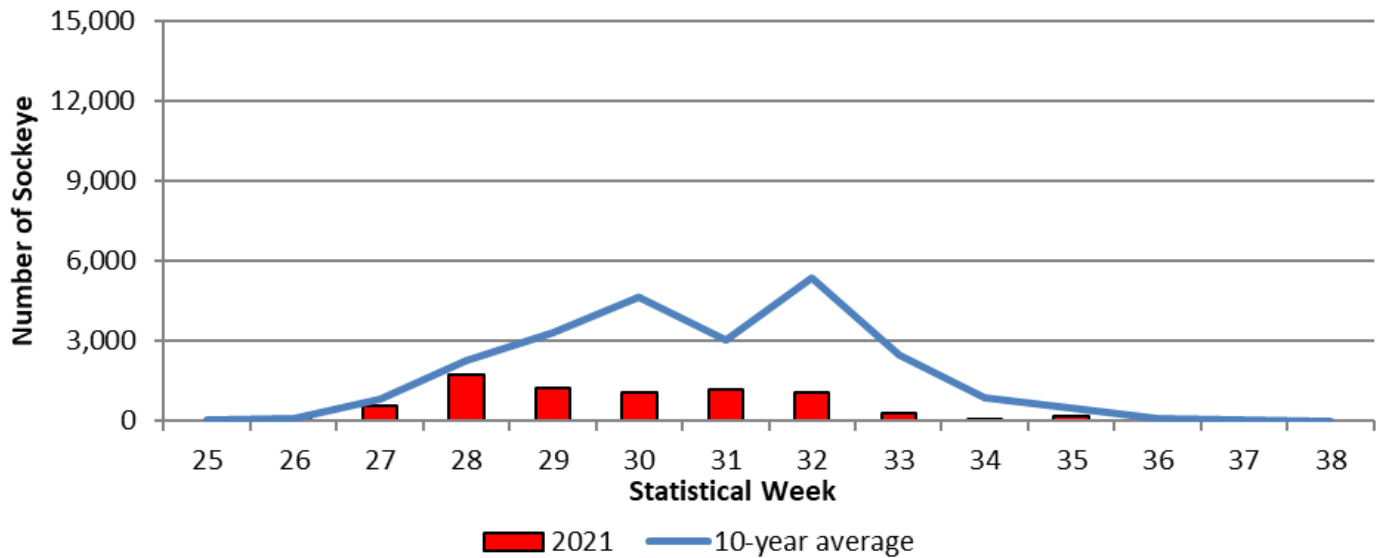


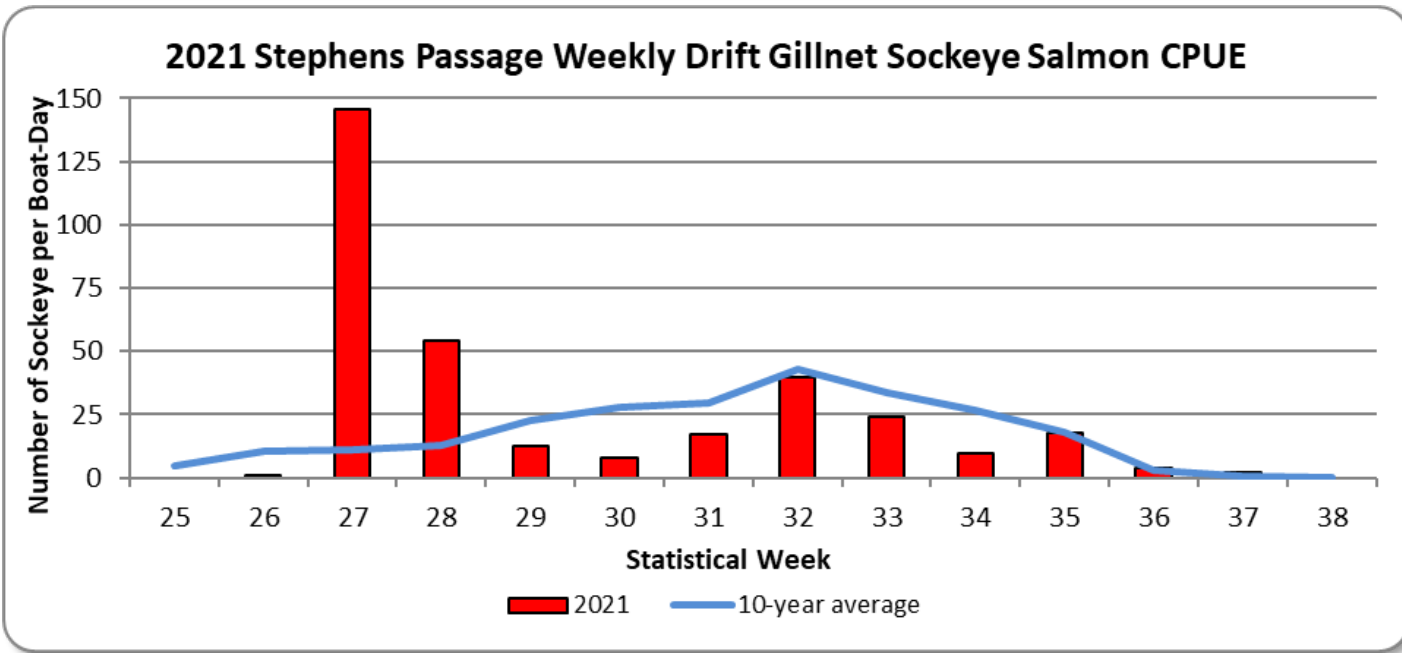
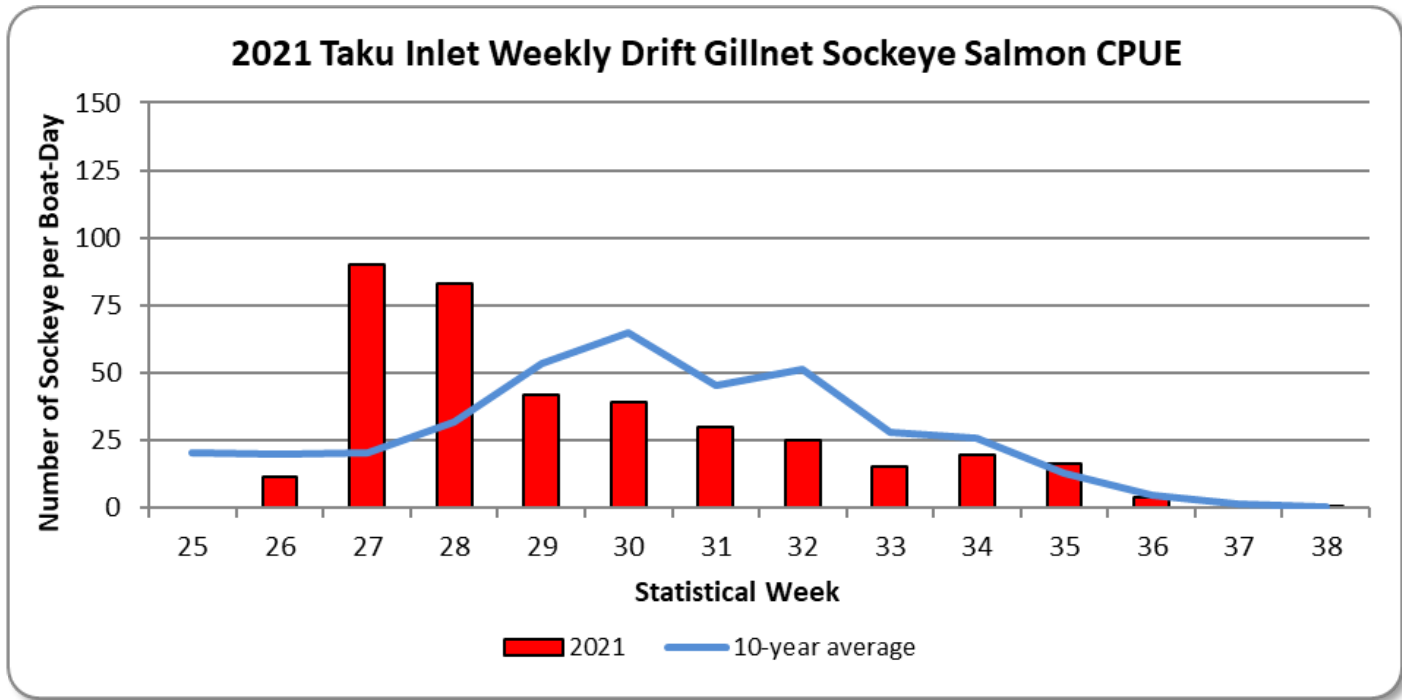


2021 Taku Inlet Weekly Drift Gillnet Sockeye Salmon Harvest

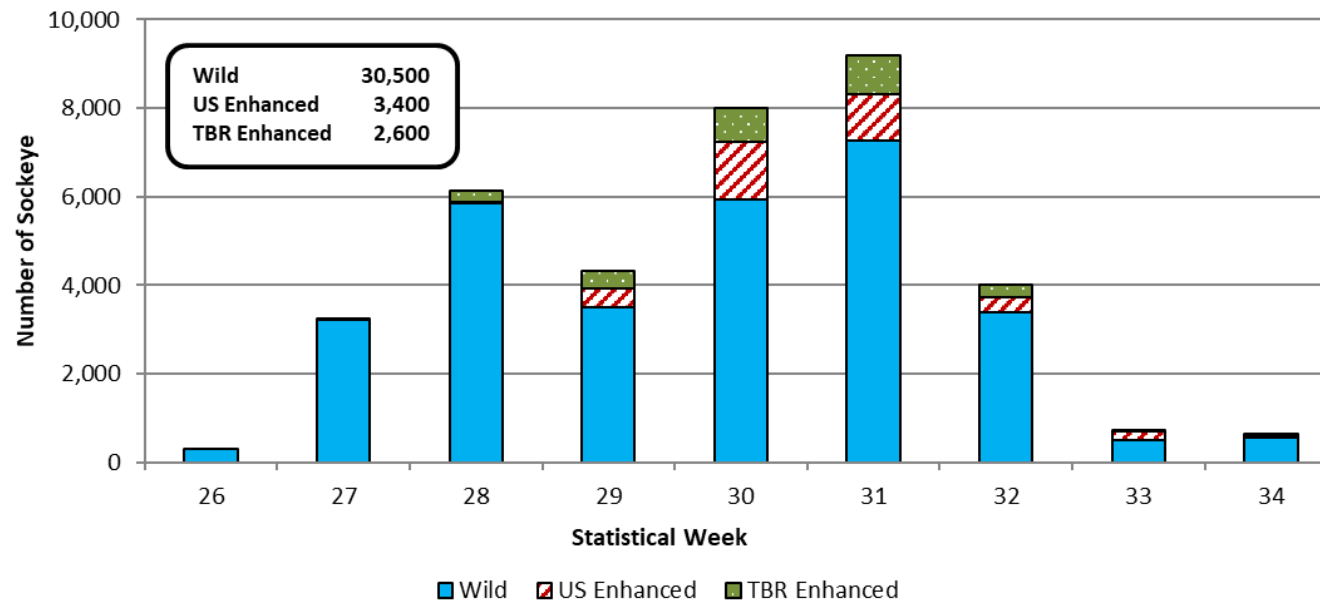


2021 Stephens Passage Weekly Drift Gillnet Sockeye Salmon Harvest

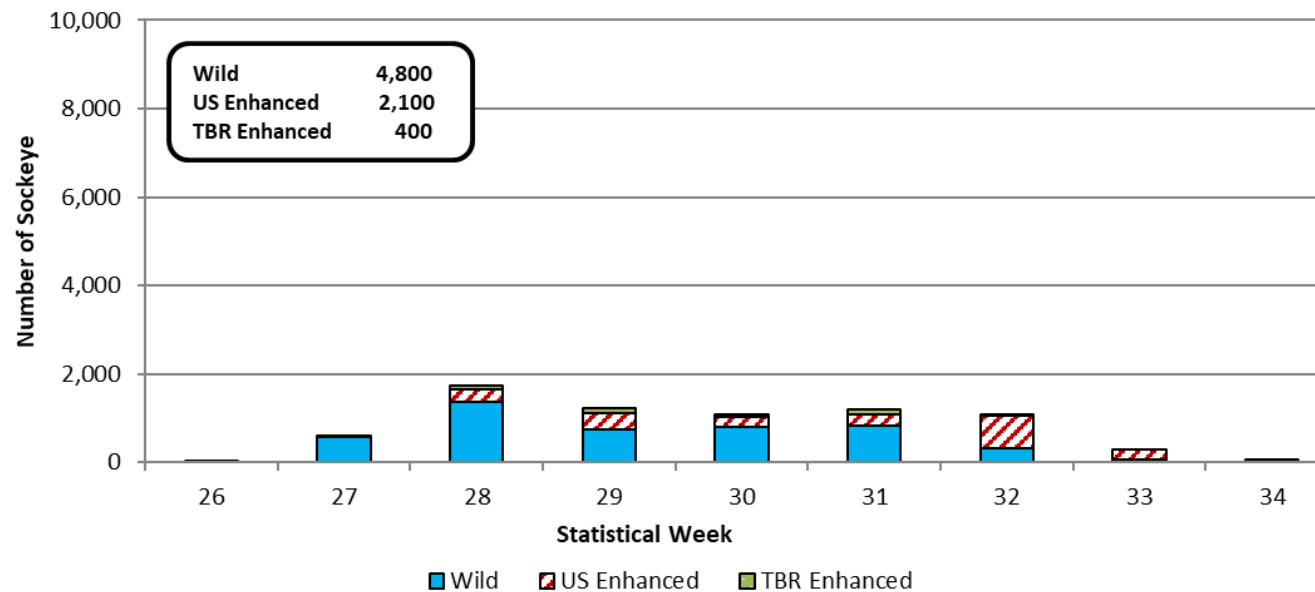




2021 Taku Inlet Weekly Drift Gillnet Sockeye Salmon Harvest Composition

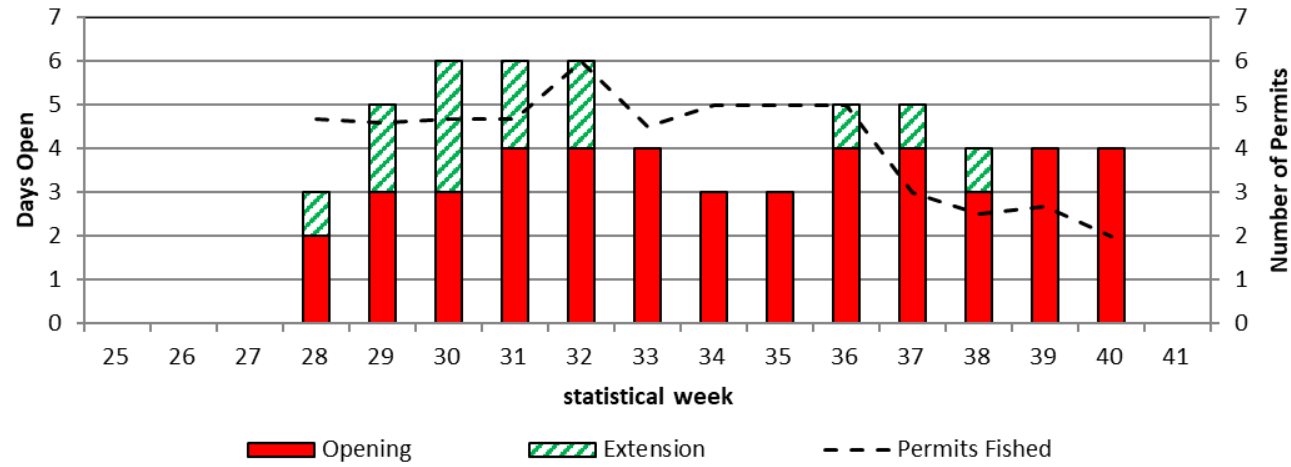


2021 Stephens Passage Weekly Drift Gillnet Sockeye Salmon Harvest Composition

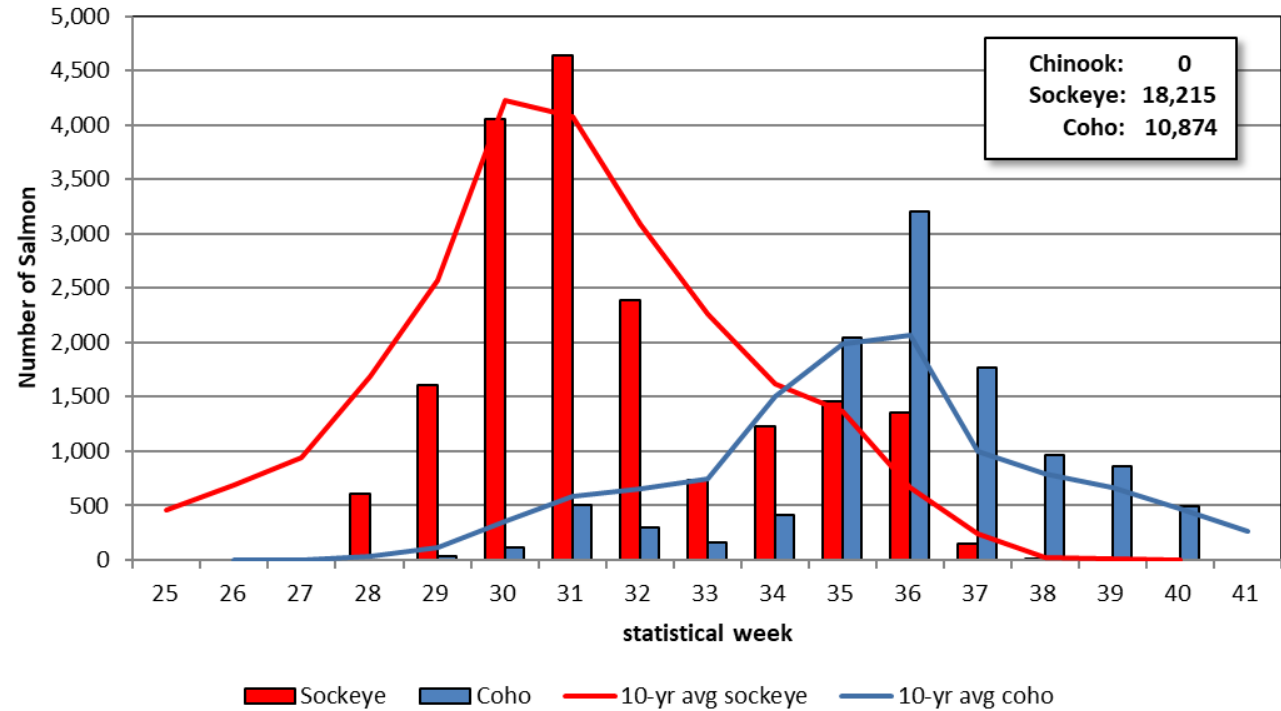




2021 Canada Taku River Weekly Commercial Gillnet Time and Effort



2021 Canada Taku River Weekly Commercial Fishery Harvest



Preliminary 2021 Taku River Sockeye Salmon Run Reconstruction

Inriver Run Size: 116,900 fish

Terminal Run Size: 170,500 fish (includes 6,000 enhanced fish)

Escapement: 103,000 fish

U.S. Harvest: 28,000 fish (includes PU fishery)

Canada Harvest: 18,200 fish (commercial only)

TAC: 112,500 fish

Harvest shares: 77% U.S., 23% Canada

U.S. AC: 86,600 fish (harvested 32%)

Canada AC: 25,900 fish (harvested 70%)



Preliminary 2021 Sockeye Salmon Escapements

Taku River: 103,000 fish

Escapement Goal Range: 40,000 – 75,000 fish

King Salmon Lake: 7,000 fish (4,400 average)

Kuthai Lake: 26 fish (930 average)

Little Trapper Lake: 19,500 fish (7,500 average)

Tatsamenie Lake: 25,600 fish (11,000 average)

Speel Lake: 8,600 fish (5,200 average)

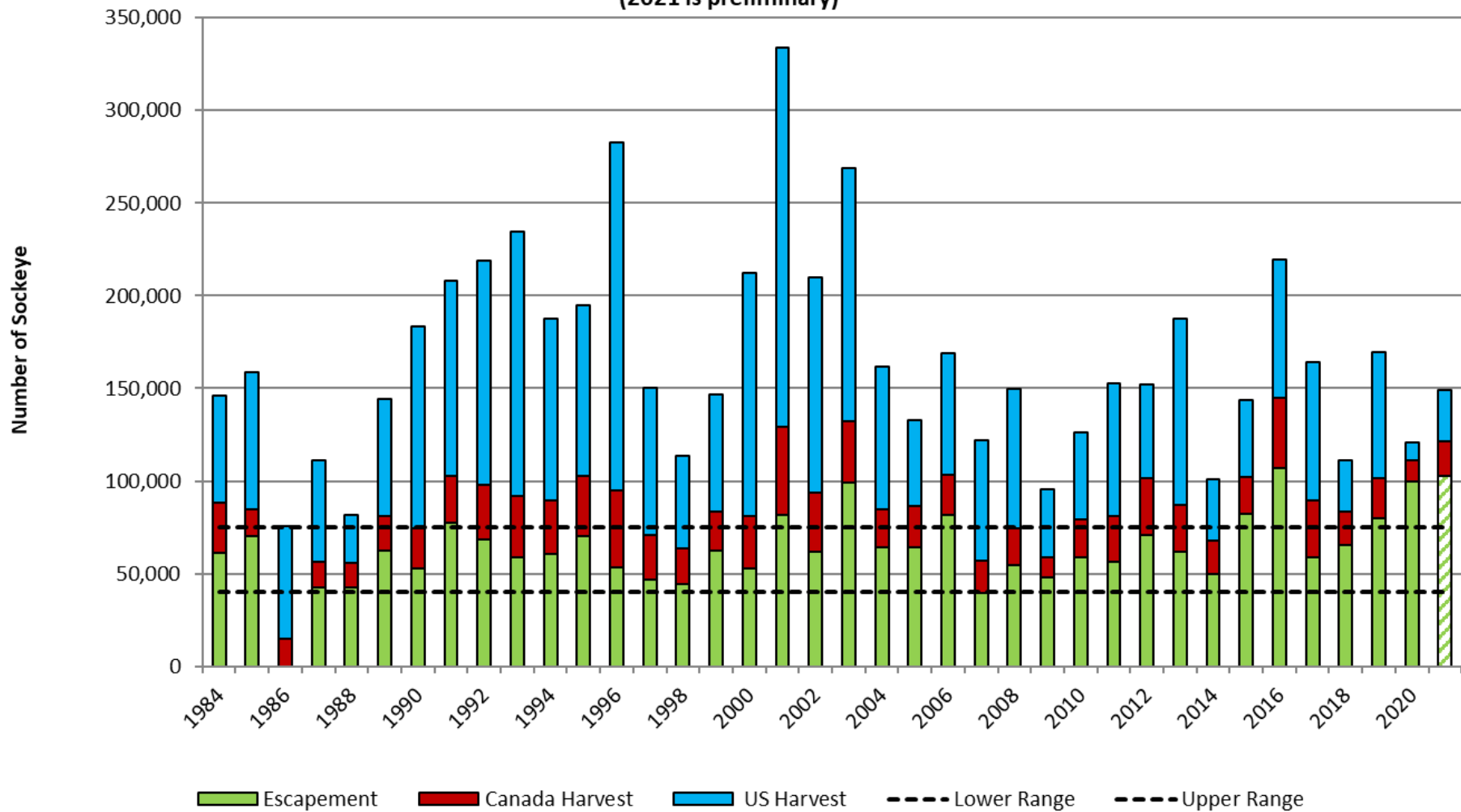
SEG Range: 4,000 – 9,000 fish

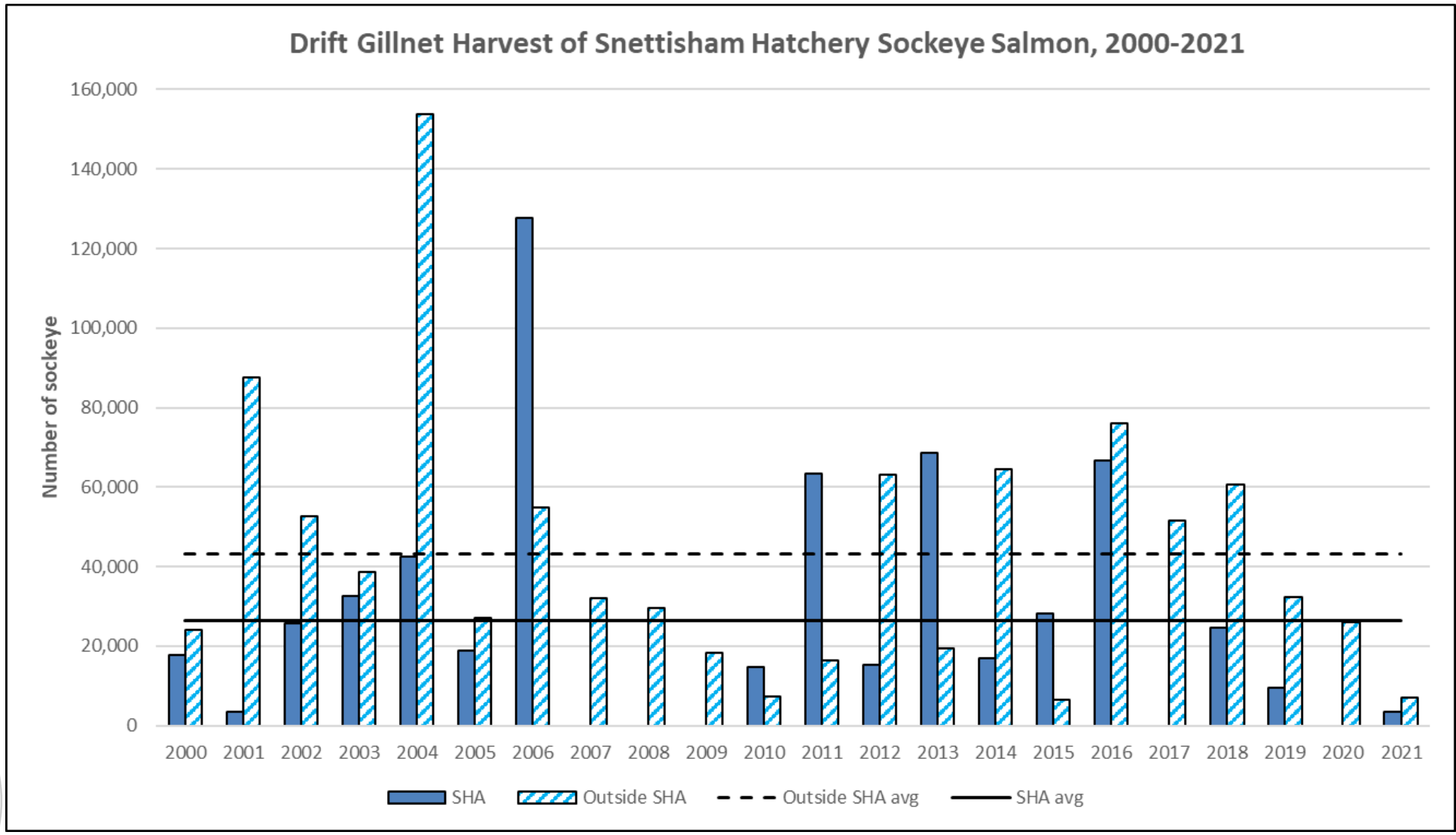
Crescent Lake: No fish observed on aerial surveys

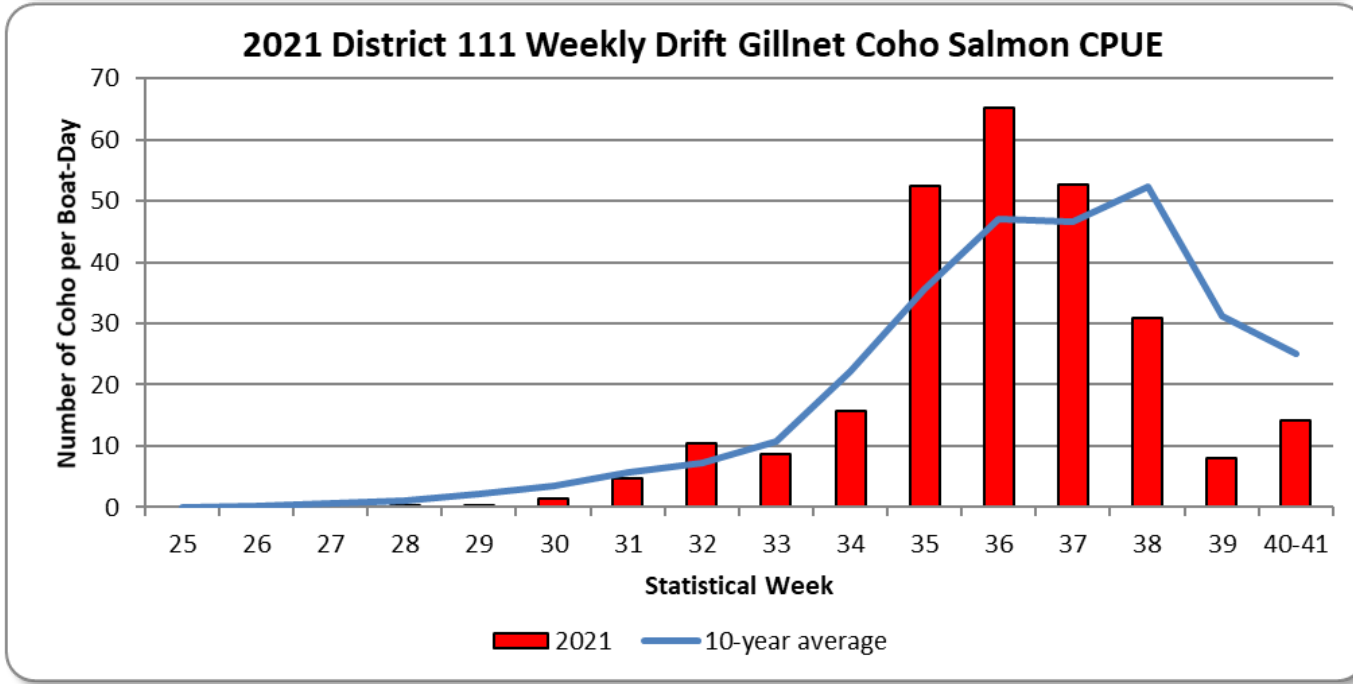
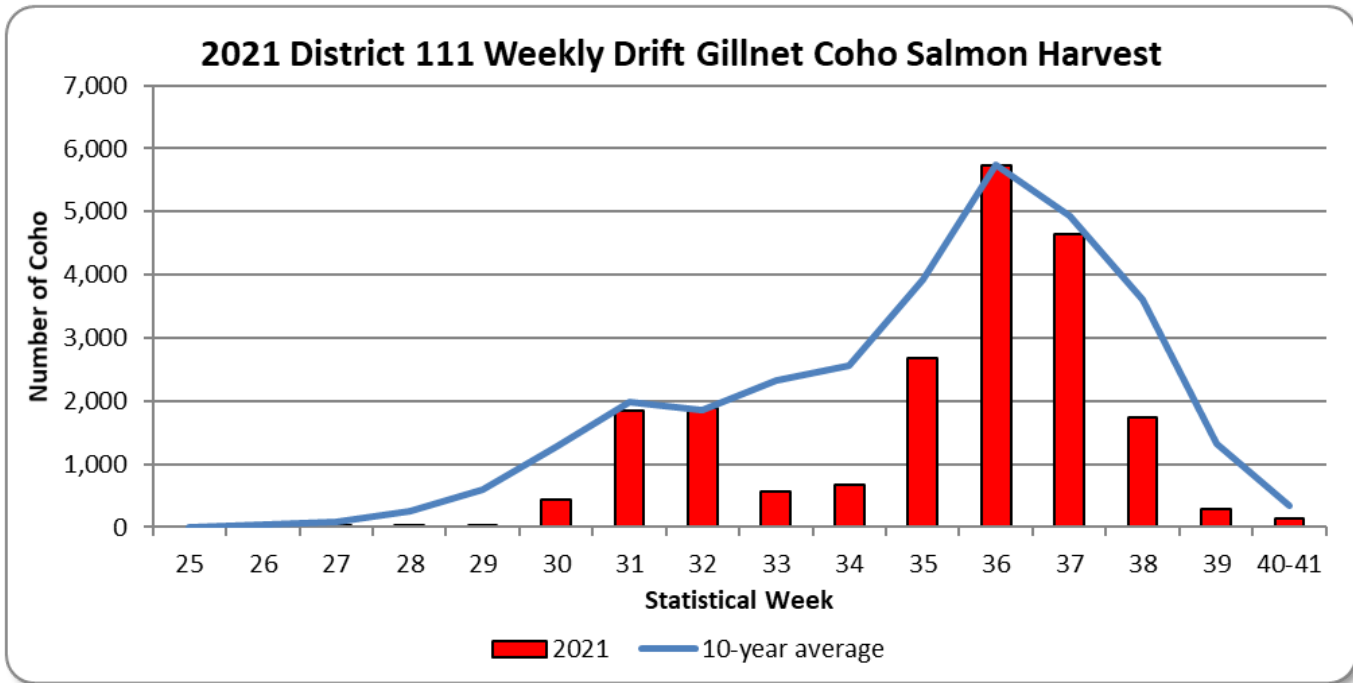


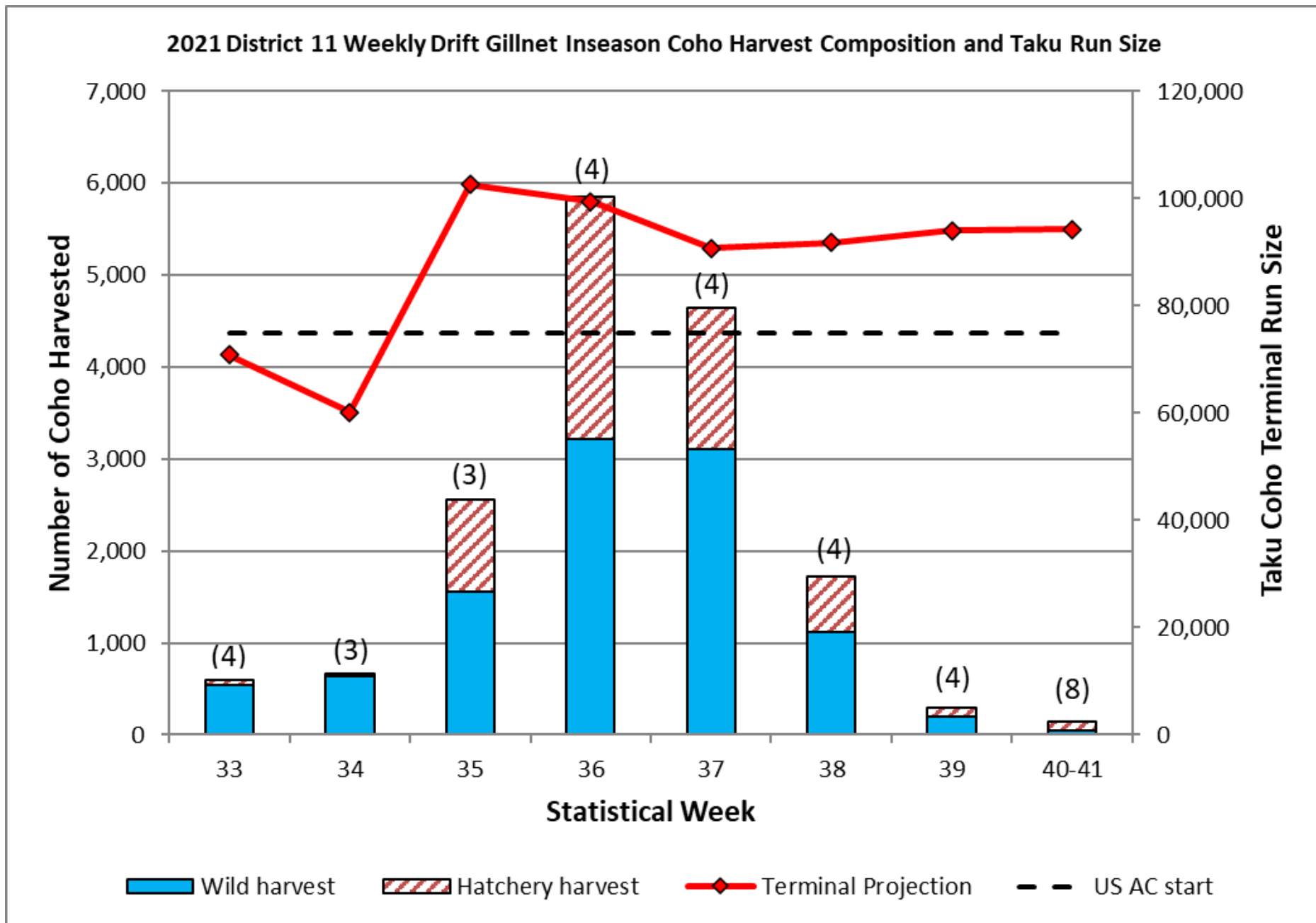


Taku River Sockeye Salmon Terminal Run Size, 1984-2021
 (2021 is preliminary)





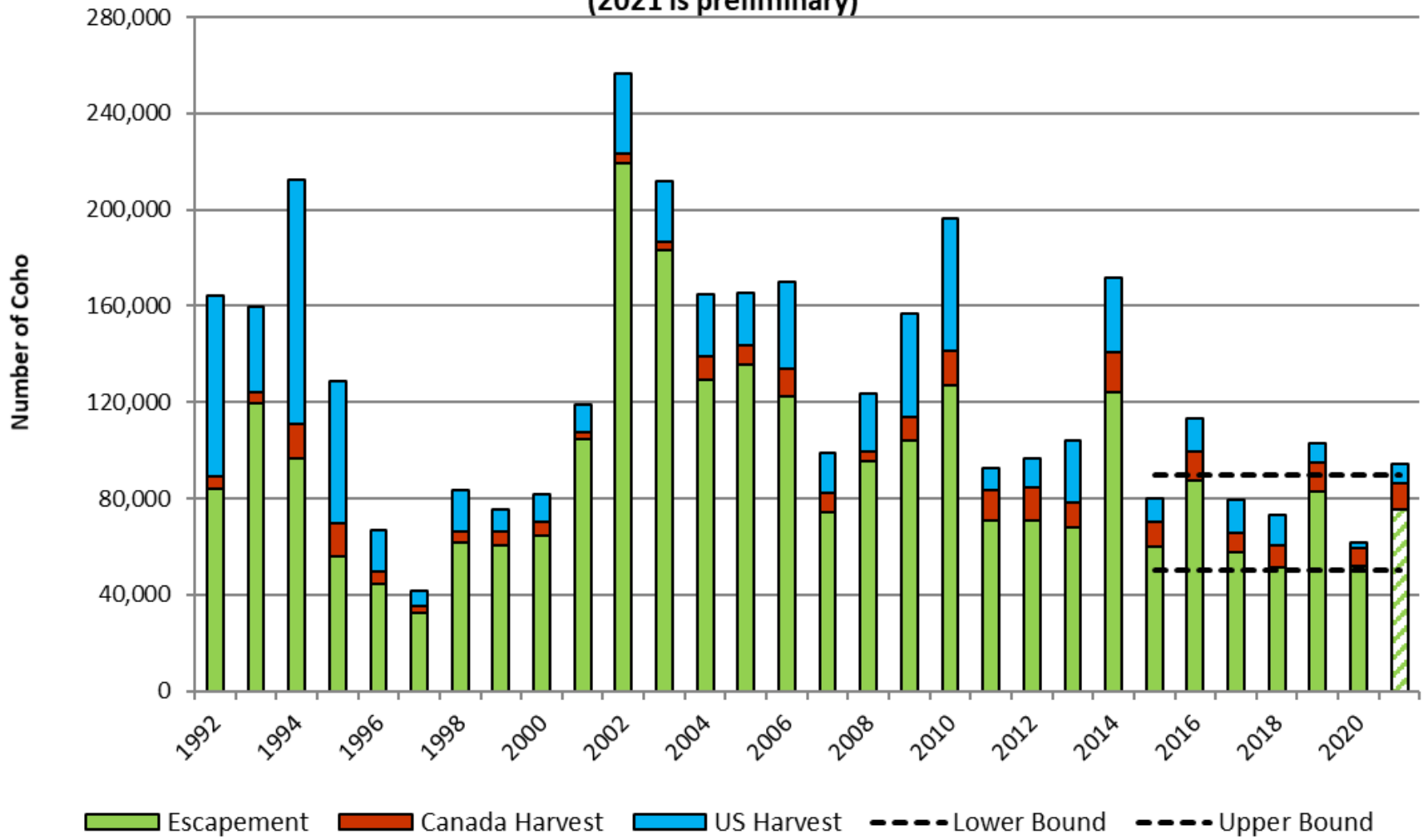




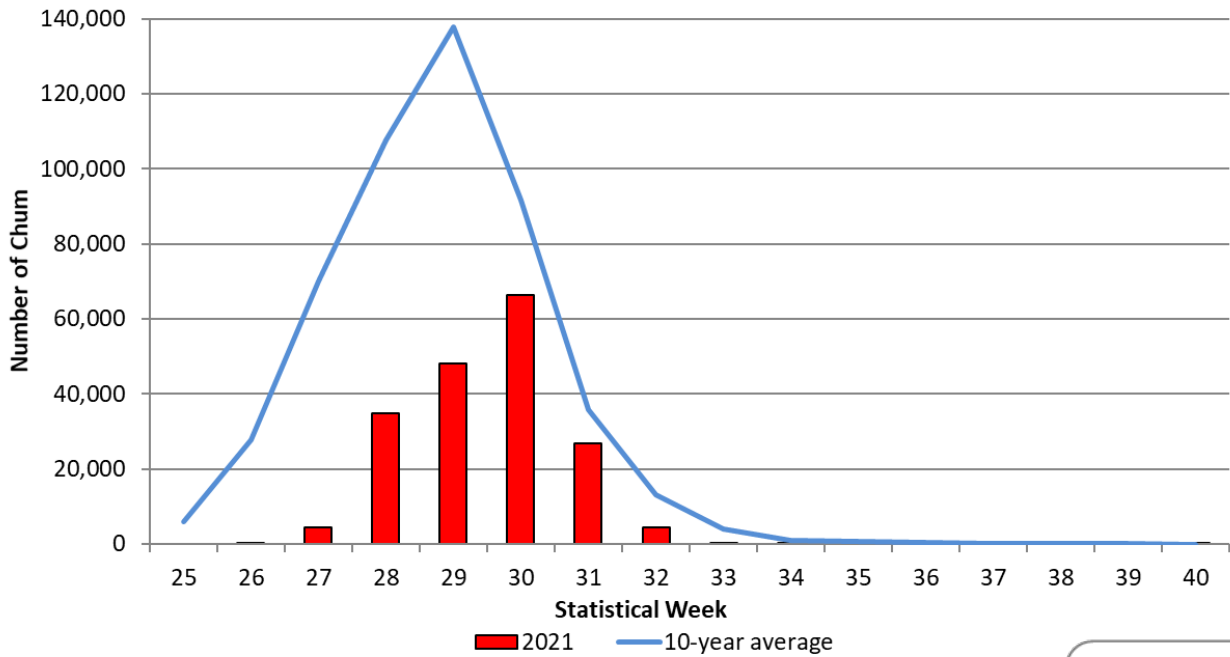


Taku River Coho Salmon Terminal Run Size, 1992-2021

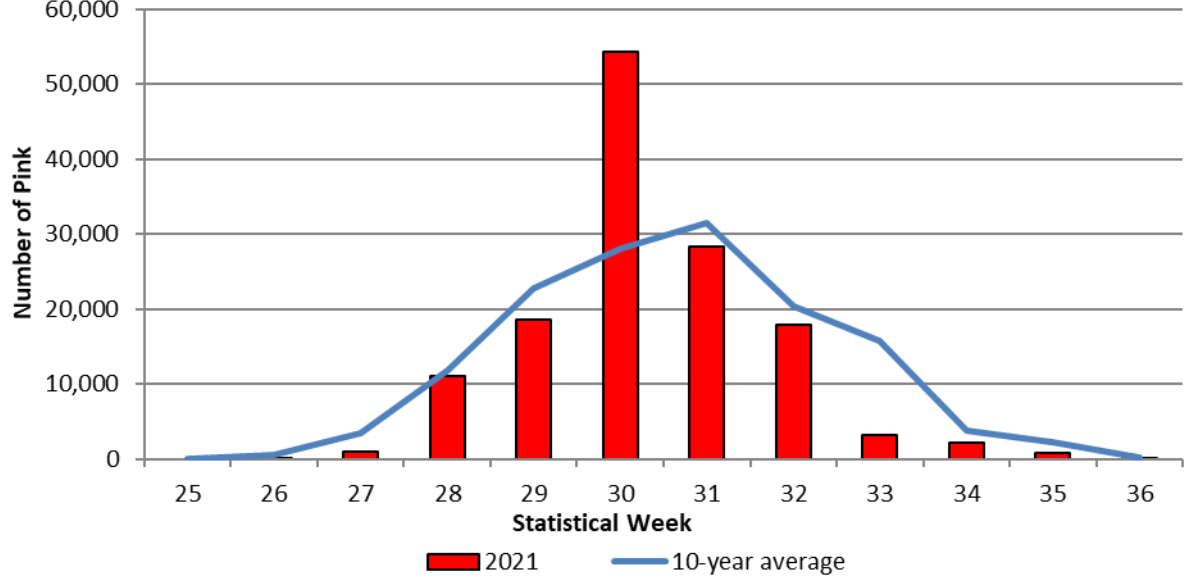
(2021 is preliminary)



2021 District 11 Weekly Drift Gillnet Chum Salmon Harvest



2021 District 11 Weekly Drift Gillnet Pink Salmon Harvest





District 11 Drift Gillnet Estimated Ex-vessel Value by Species, 2001-2021

