

2025 Southeast Alaska Salmon Escapements



Photo by
Teresa Fish

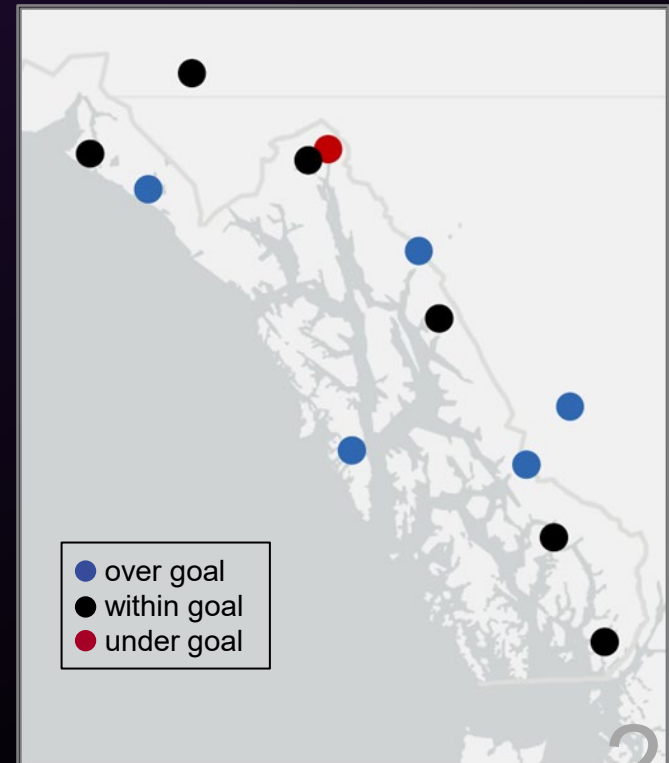
Sockeye Salmon

Stock	Estimated Escapement or Index	Escapement Goal Range	Enumeration Method
Klukshu River	9,688	7,500–11,000	Weir Count
Situk River	147,052	30,000–70,000	Weir Count
East Alsek River	20,300	9,000–24,000	Peak Aerial Survey
Chilkoot Lake	31,898	38,000–86,000	Weir Count
Chilkat Lake	137,000	70,000–150,000	Weir/Sonar Count
Taku River	126,594	40,000–75,000	Mark-recapture
Speel Lake	6,780	4,000–13,000	Weir Count
Redoubt Lake	228,974	7,000–25,000	Weir Count
Stikine—mainstem	42,000	13,000–33,000	Run Reconstruction
Stikine—Tahltan	39,983	11,000–25,000	Weir Count
McDonald Lake*	71,157	55,000–120,000	Mark-recapture
Hugh Smith Lake*	9,450	8,000–18,000	Weir Count

Escapements over the goal range are **bold**

Escapements below the goal range are highlighted in **red**

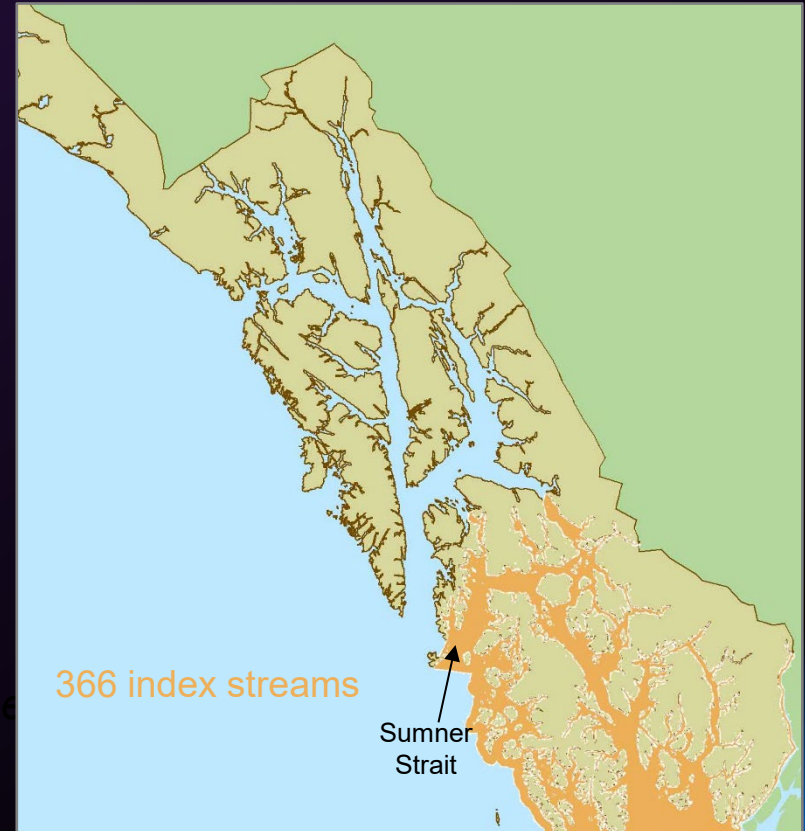
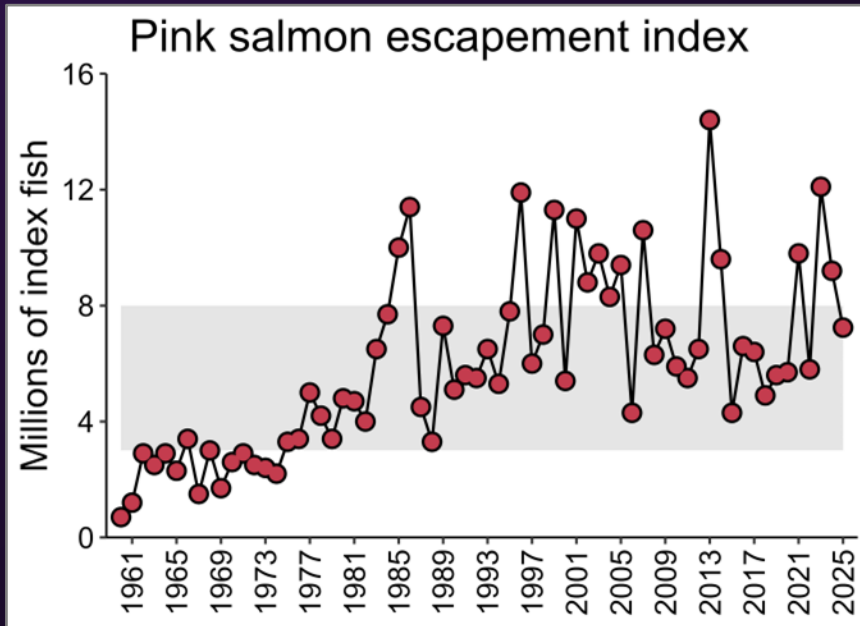
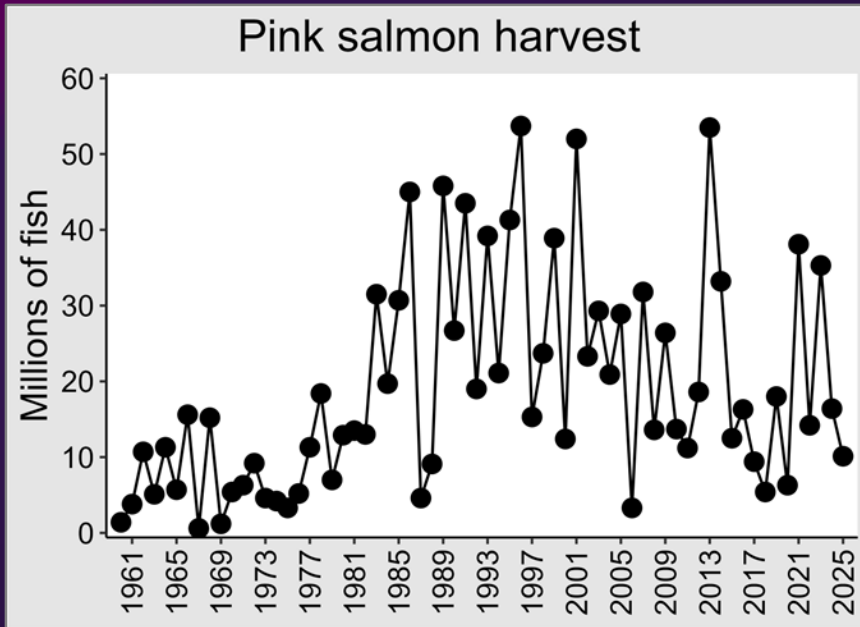
Current stocks of concern are denoted with an *



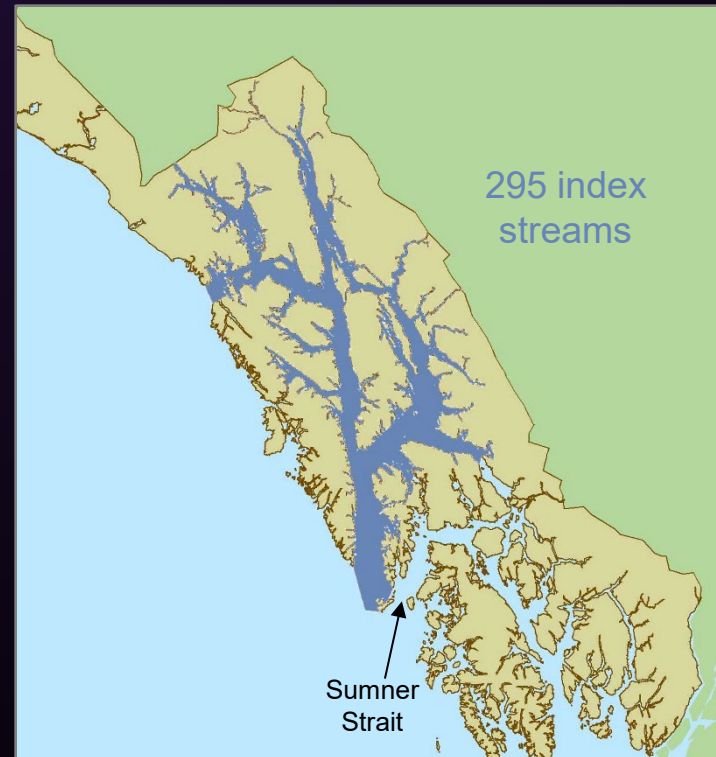
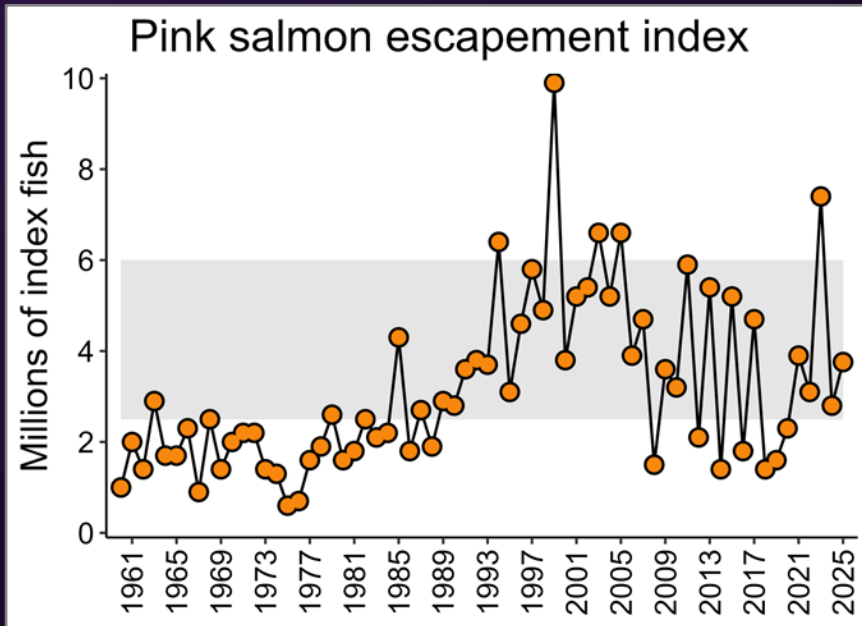
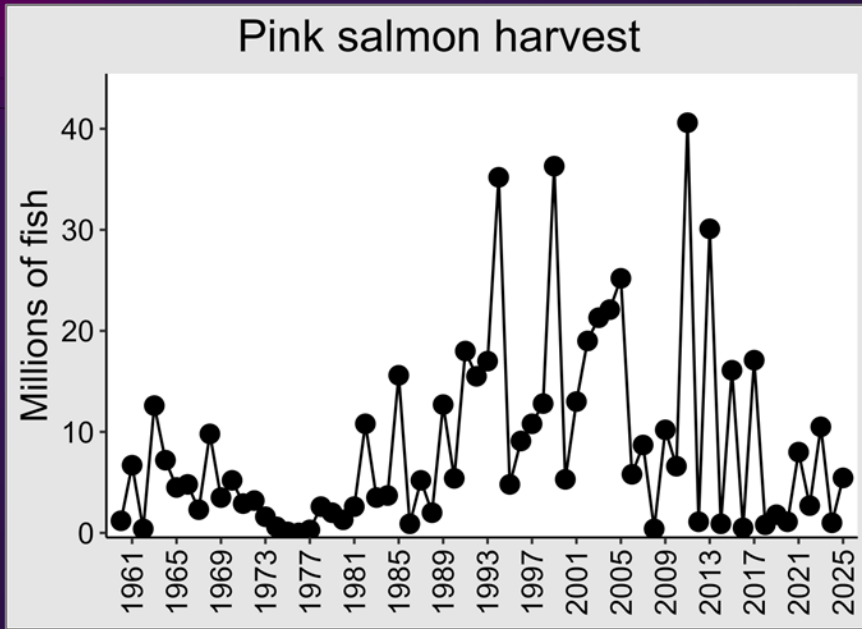
Pink Salmon Escapement Indices



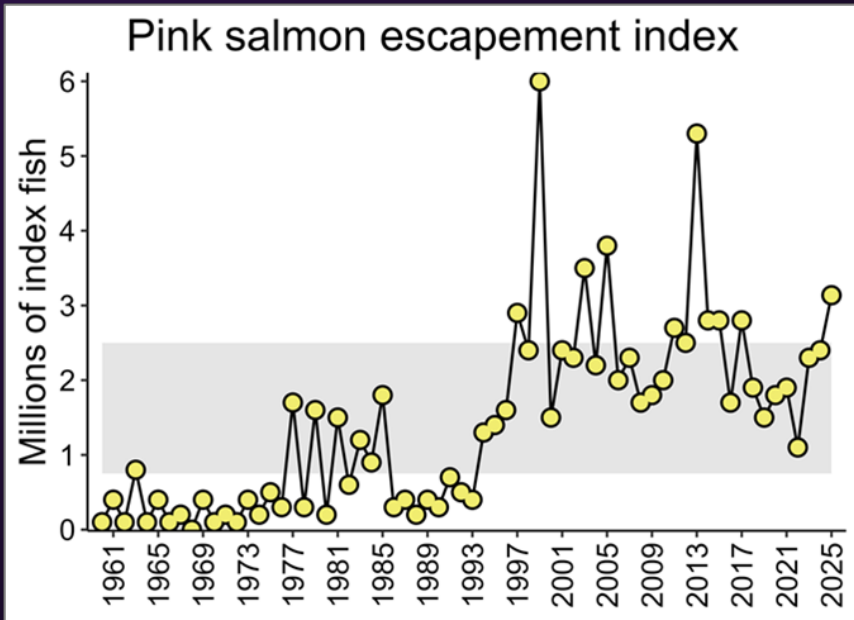
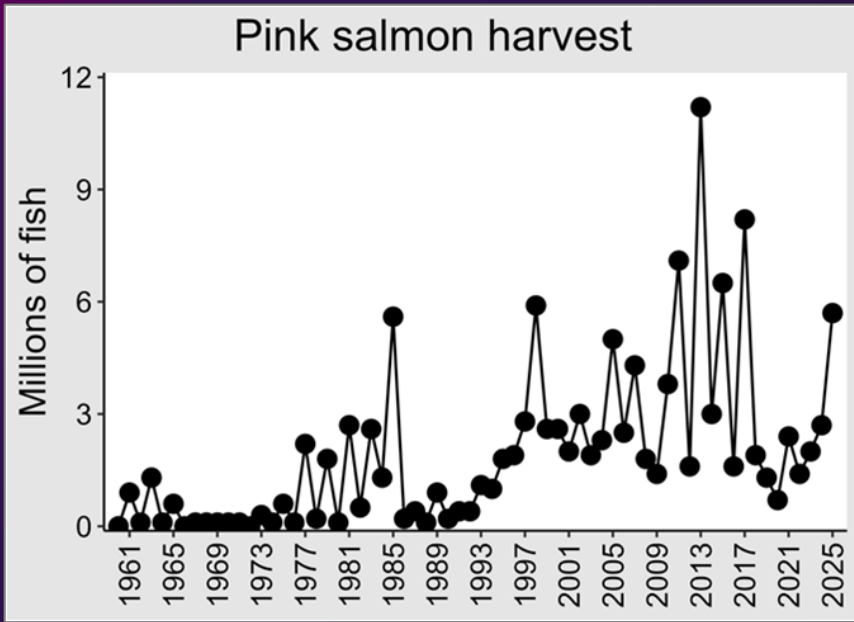
Southern Southeast Subregion



Northern Southeast Inside Subregion



Northern Southeast Outside Subregion

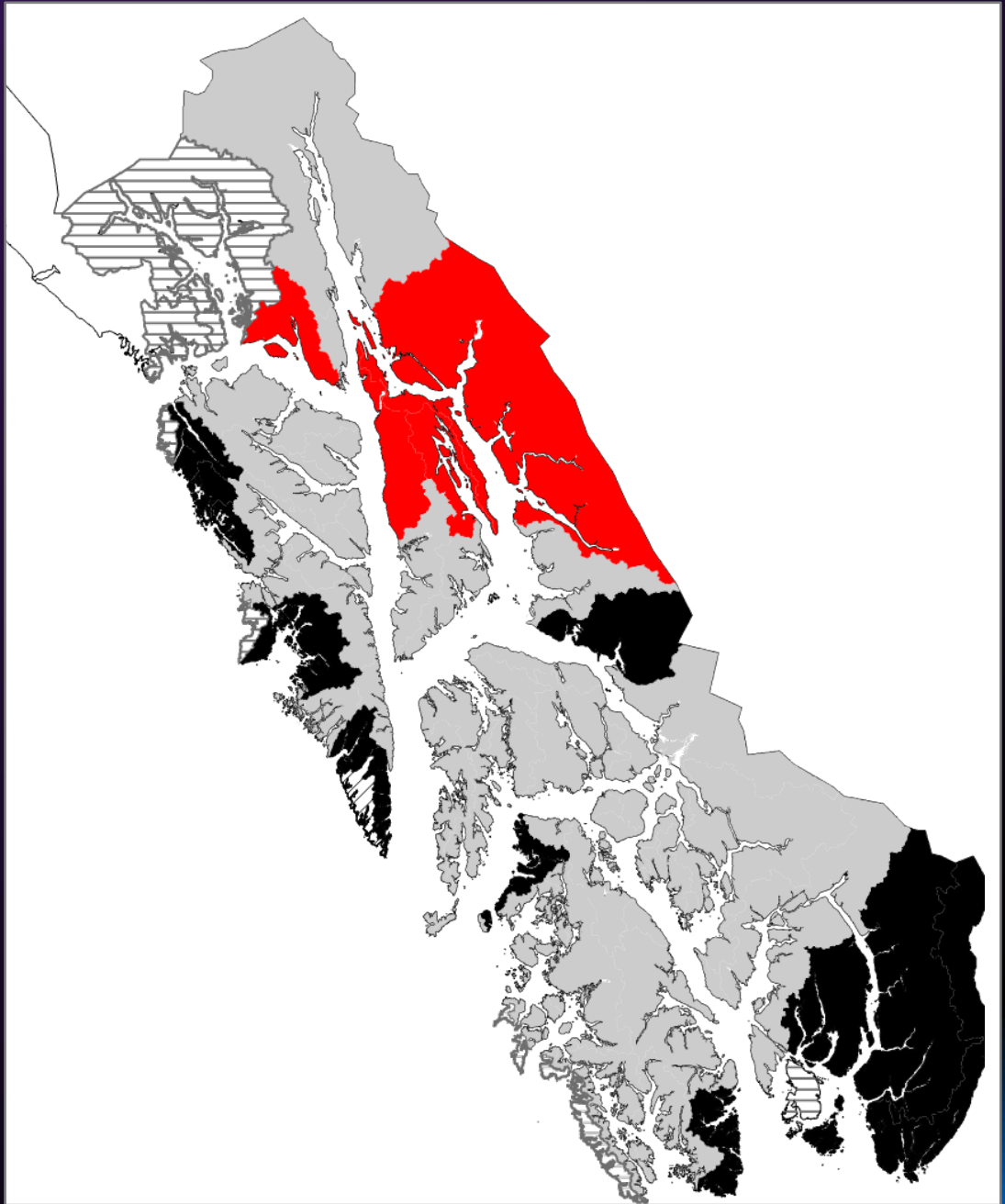


2025 Stock Groups

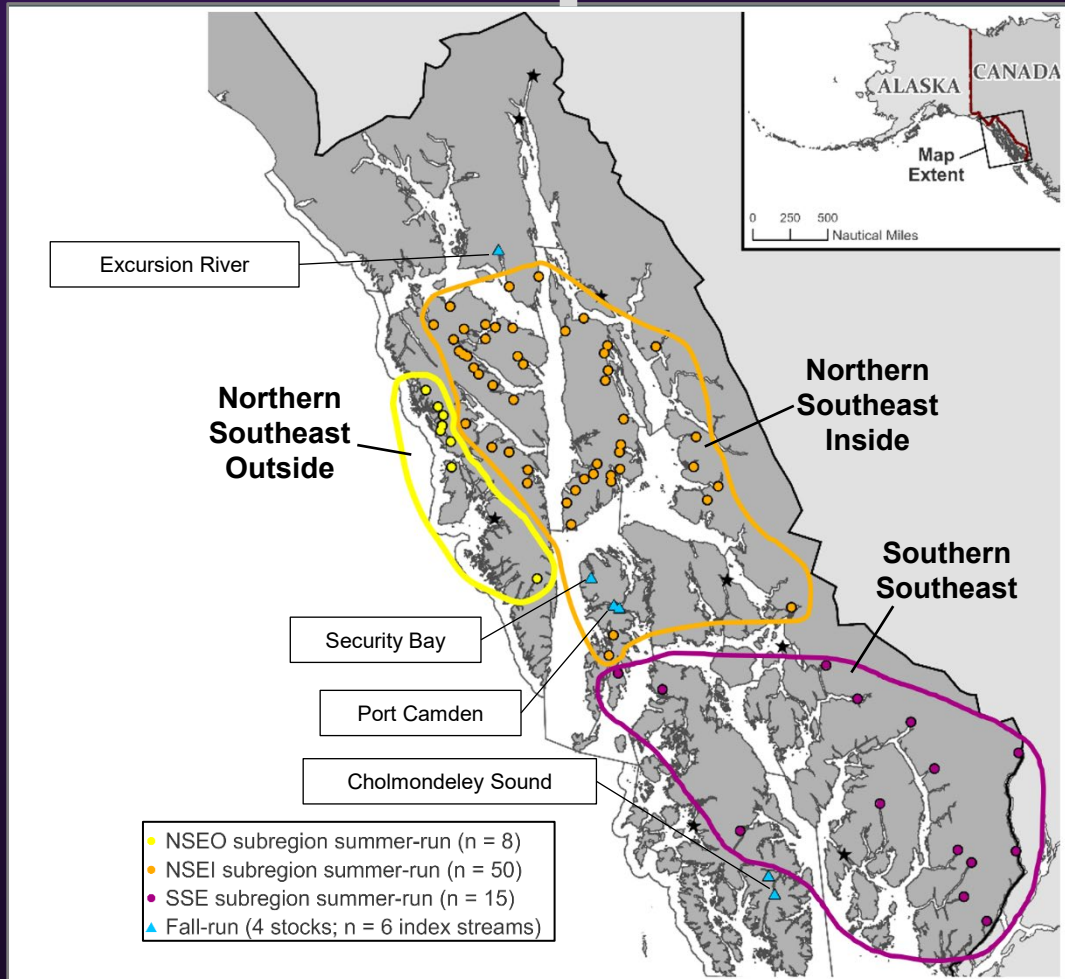
31 met management
targets

4 did not meet
management targets

11 exceeded
management targets

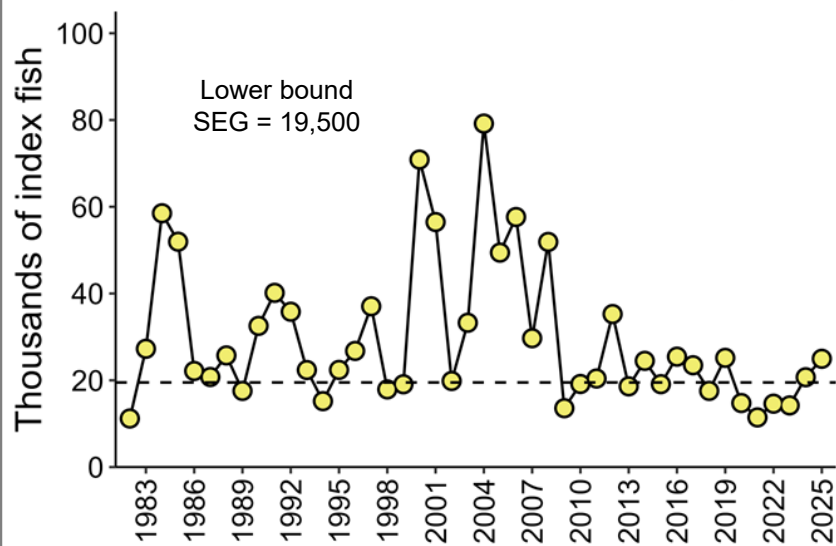


Chum Salmon Escapement Indices

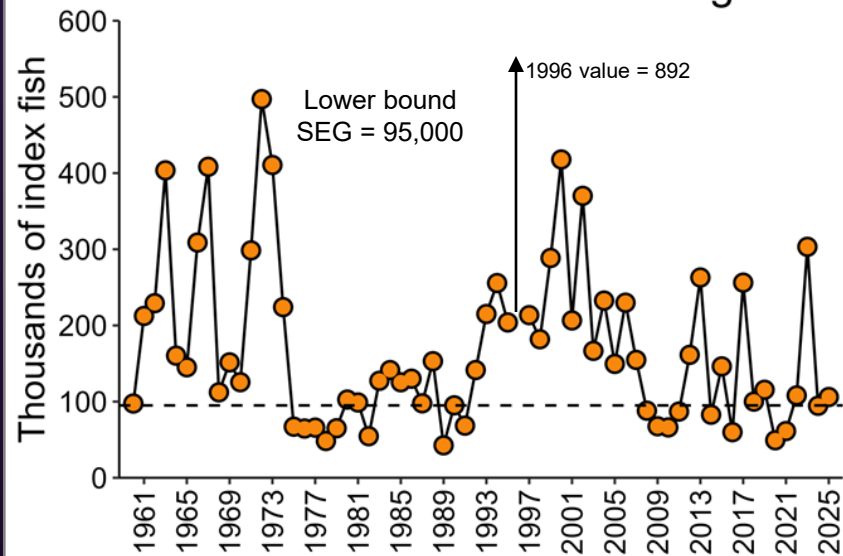


Summer-run Chum Salmon

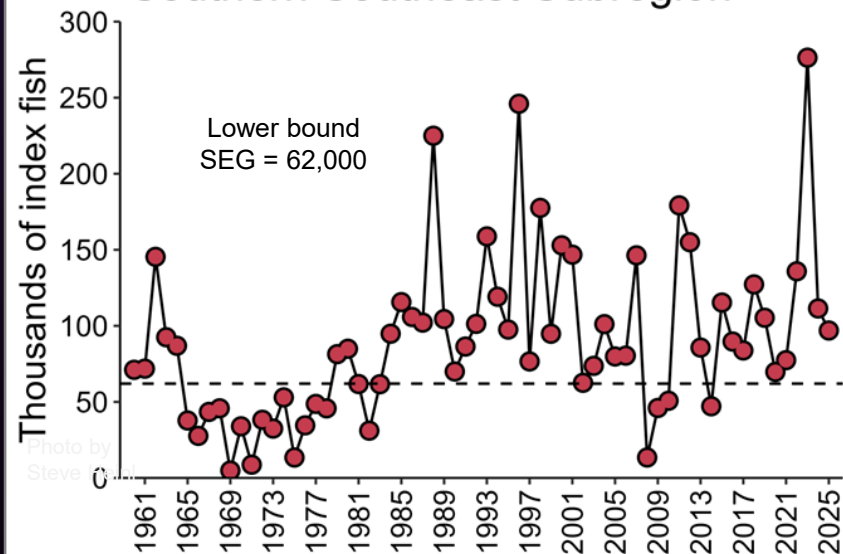
Northern Southeast Outside Subregion



Northern Southeast Inside Subregion

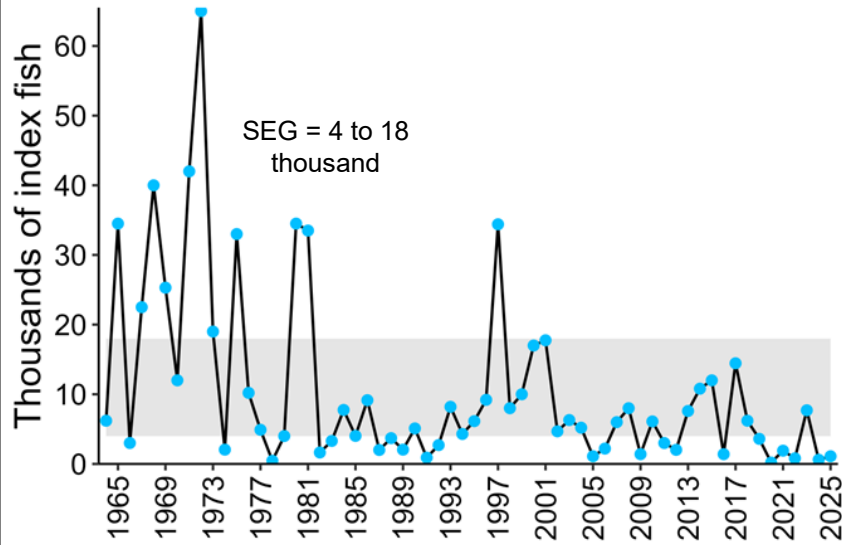


Southern Southeast Subregion

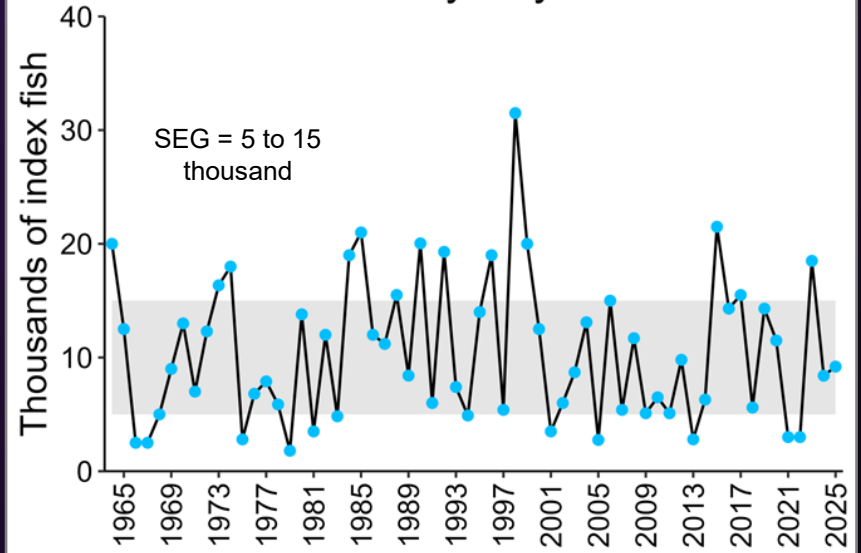


Fall-run Chum Salmon

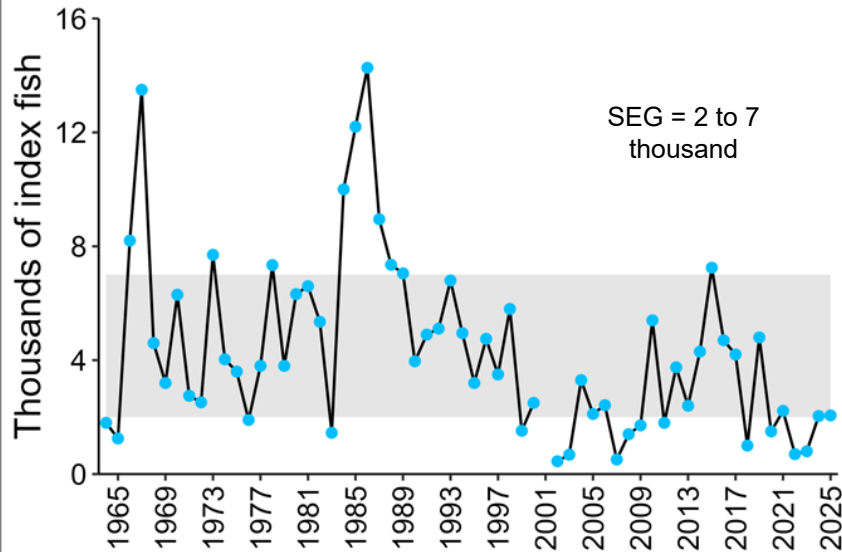
Excursion River



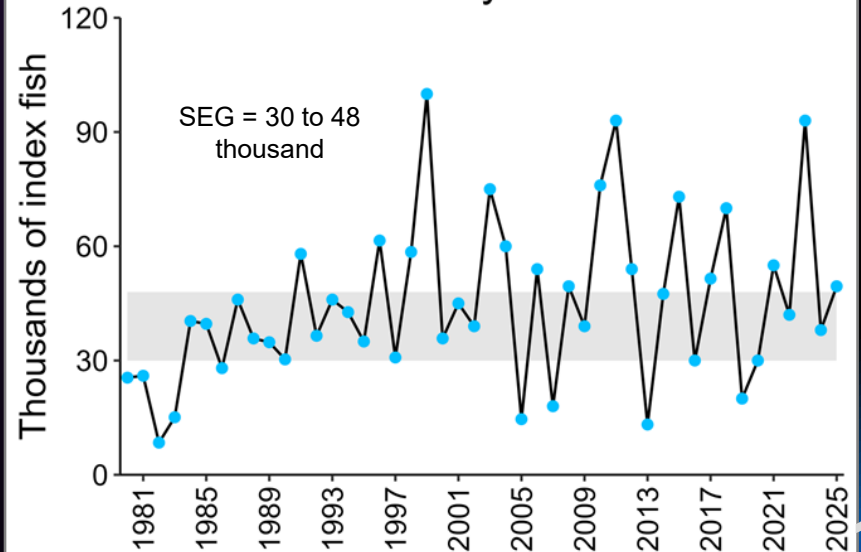
Security Bay



Port Camden



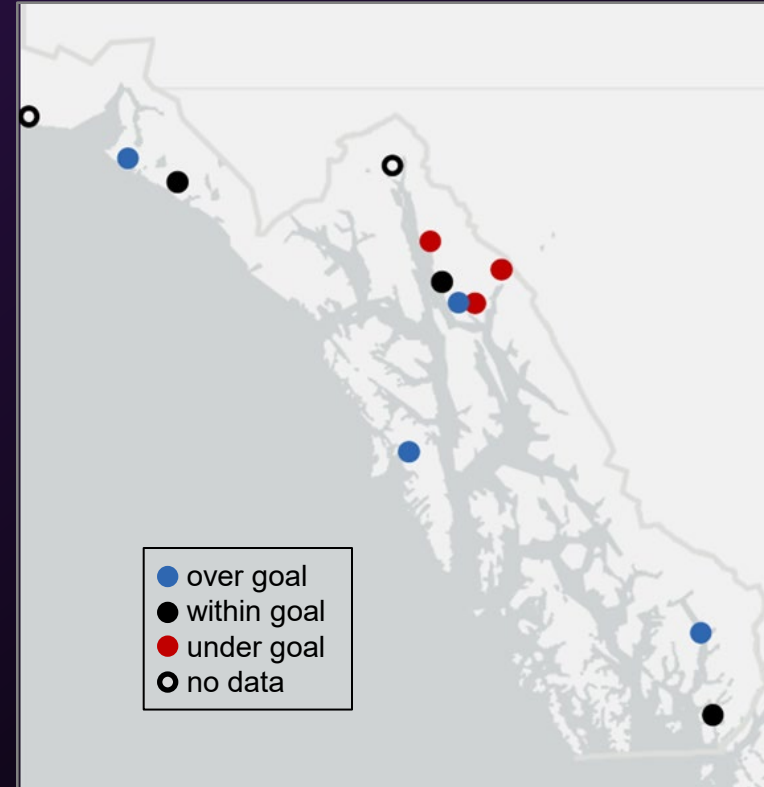
Cholmondeley Sound



Coho Salmon

Stock	Estimated Escapement or Index	Escapement Goal Range	Enumeration Method
Tawah Creek	No Data	1,400–4,200	Peak Aerial Survey
Situk River	12,500	3,300–9,800	Peak Boat Survey
Tsiu/Tsivat Rivers	17,200	10,000–29,000	Peak Aerial Survey
Chilkat River	No Data	30,000–70,000	Mark-recapture/ Foot Survey
Berners River	3,273	3,600–8,100	Peak Aerial/Foot Survey
Montana Creek	198	400–1,200	Foot Survey
Peterson Creek	195	100–250	Foot Survey
Taku River	47,069	50,000–90,000	Mark-recapture
Auke Creek	627	200–500	Weir Count
Sitka Survey Index	1,755	400–800	Foot Survey
Ketchikan Index	19,633	4,250–8,500	Peak Aerial Survey
Hugh Smith Lake	731	500–1,600	Weir Count

Escapements below the goal range are highlighted in red
Escapements over the goal range are bold



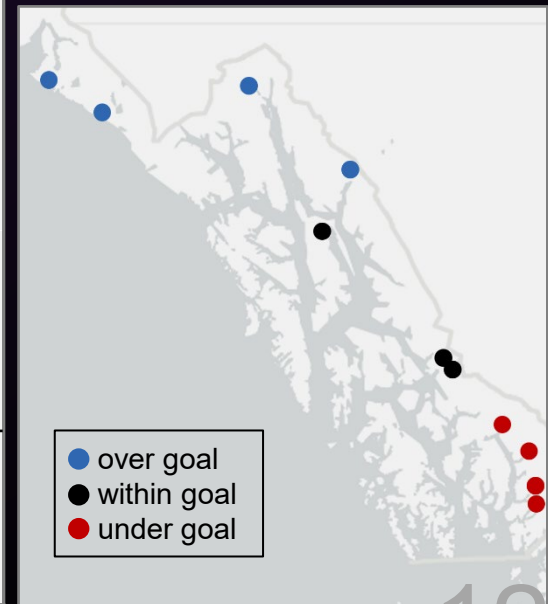
Chinook Salmon

System	Escapement Goal ^a	Escapement					
		2020	2021	2022	2023	2024	2025 ^b
Keta River	550–1,300	668	707	689	759	948	334
Blossom River	500–1,400	515	170	395	670	654	445
Chickamin River	2,150–4,300	2,280	2,404	2,522	3,719	2,176	1,914
Unuk River	1,800–3,800	1,135	2,666	1,304	2,072	1,980	1,381
Stikine River*	14,000–28,000	9,753	8,376	9,090	5,135	9,835 ^b	15,159
Andrew Creek*	650–1,500	470	530	821	386	404	688
King Salmon River*	120–240	100	134	123	68	85	202
Taku River*	19,000–36,000	15,593	11,344	12,722	14,755	24,518	42,972
Chilkat River	1,750–3,500	3,180	2,038	1,582	2,234	2,070^b	4,054
Alsek River	3,500–5,300	5,330	5,562	3,351	4,329	4,811^b	6,229
Situk River	450–1,050	1,197	1,064	890	144	517	1,286

Note: Gray cells indicate lower bound of the escapement goal not met.

^a Goals and escapement numbers for Chinook salmon are for large fish (≥660 mm mid-eye to tail fork length, or fish age-1.3 and older), except Alsek and Klukshu goals which are germane to fish age-1.2 and older and can include <660 mm mid-eye to tail fork fish length.

^b Preliminary estimates pending publication of final report.



Escapement Questions?



Photo by
Teresa Fish

IV. Discussion Topics

- A. Northern SEAK sockeye genetics at 1330 (Shedd)
- B. Chilkoot Lake sockeye salmon run escapement & run timing (Piston)
- C. Hawk Inlet seine fishery (Forbes)
- D. North end pink salmon escapement (Piston)
- E. Lynn Canal fall fisheries (Zeiser)
- F. Coho salmon allocation/management plan (Thynes)
- G. MIC court ruling update (Meredith)
- H. Pacific Salmon Treaty updates (Thynes)
- I. Observer/Porpoise Updates (Thynes)
- J. Other

Escapement Questions?



Photo by
Teresa Fish