

# 2025 Terminal Troll Harvest Areas

by

**Grant Hagerman**

and

**Michael Vaughn**

---

---

April 2025

Alaska Department of Fish and Game

Division of Commercial Fisheries



## LIST OF FIGURES

<b>Figure</b>	<b>Page</b>
Figure 1.—Nakat Inlet THA.....	2
Figure 2.—Carroll Inlet THA. ....	3
Figure 3.—Neets Bay THA. ....	4
Figure 4.—Kendrick Bay THA. ....	5
Figure 5.—Port Saint Nicholas THA.....	7
Figure 6.—Anita Bay THA. ....	8
Figure 7.—Gunnuk Creek THA. ....	10
Figure 8.—Southeast Cove THA.....	11
Figure 9.—Thomas Bay THA. ....	12
Figure 10.—Hidden Falls THA. ....	13
Figure 11.—Crawfish Inlet THA, Crawfish Inlet SHA, and West Crawfish spring troll area. ....	15
Figure 12.—Silver Bay THA.....	16
Figure 13.—Deep Inlet THA. ....	17

## 2025 TERMINAL HARVEST AREAS AND MAPS

### KETCHIKAN AREAS

**Nakat Inlet THA (fishery area 101-10):** In the waters north of Surprise Point at 54°49.10' N lat and west of 130°42.75' W long will be open from 12:01 a.m., Sunday, June 1 through 11:59 p.m., Monday, November 10. The 500-yard stream closure regulation under 5 AAC 39.290(a)(2) will remain in effect in the Nakat Inlet THA, except during spring troll fisheries, as specified in 5 AAC 29.150(a)(2) (Figure 1).

**Carroll Inlet THA (fishery area 101-48):** In the waters of Carroll Inlet north of the latitude of Nigelius Point at 55°33.50' N lat, will be open to troll gear from 12:01 a.m., Sunday, June 1 through 11:59 p.m., Monday, June 30. The waters north of the latitude of Nigelius Point and south of the latitude of 55°34.83' N lat (approximately 1.3 nautical mile [nmi] north of Nigelius Point) will be open exclusively to troll gear from Sunday, June 1 through Saturday, June 7. The 500-yard stream closure regulation under 5 AAC 39.290(a)(2) will **NOT** be in effect in the Carroll Inlet THA (Figure 2).

Concurrent openings for troll, drift gillnet, and purse seine are scheduled in the waters of the THA north of 55°34.83' N lat with net gear open from 5:00 a.m., Sunday, June 1 through 11:59 p.m., Saturday, June 7. All waters of the THA will be open exclusively to troll gear from 12:00 noon, Thursday, June 12, through 12:00 noon, Sunday, June 15. Rotational net gear fisheries are scheduled for all waters of the THA beginning 12:00 noon, Sunday, June 15 and ending 12:00 noon, Monday, June 30.

**Neets Bay THA (fishery area 101-95):** In the waters of Neets Bay east of the longitude of the easternmost tip of Bug Island at 131°39.14' W long (Bug Island line), and west of the closed waters at the head of the bay. The closed waters at the head of the bay are those waters east of 131°29.86' W long, until the barrier net is in place; at that time, the closed waters are those waters east of the barrier net. (Figure 3)

The Neets Bay THA will be expanded on July 1 to Chin Point at 131°42.10' W long (Chin Point Line) for troll gear only. Chinook salmon may NOT be retained in this expanded area, as Chinook salmon retention and possession in the Neets Bay THA is prohibited for vessels operating commercial troll gear within all waters of the THA.

**The THA will open to troll gear from 12:01 a.m., Friday, June 27 through 11:59 p.m., Thursday, July 31 as follows, unless closed by emergency order:**

12:01 a.m., Friday, June 27, to 11:59 p.m., Monday, June 30, **east of the Bug Island line (131°39.14' W long);**  
12:01 a.m., Tuesday, July 1, to 11:59 p.m., Thursday, July 31, **east of the Chin Point line (131°42.10' W long);**

**Kendrick Bay THA (fishery area 102-15):** The Kendrick Bay THA will **NOT OPEN**. The Southern Southeast Regional Aquaculture Association (SSRAA) will be conducting cost recovery operations in the Kendrick Bay THA beginning June 15, with the goal of taking approximately 1.5 million pounds of chum salmon designated for cost recovery. If this goal is reached, a separate advisory announcement will be issued opening the THA for common property purse seine and troll harvest. This could occur in early July (Figure 4).

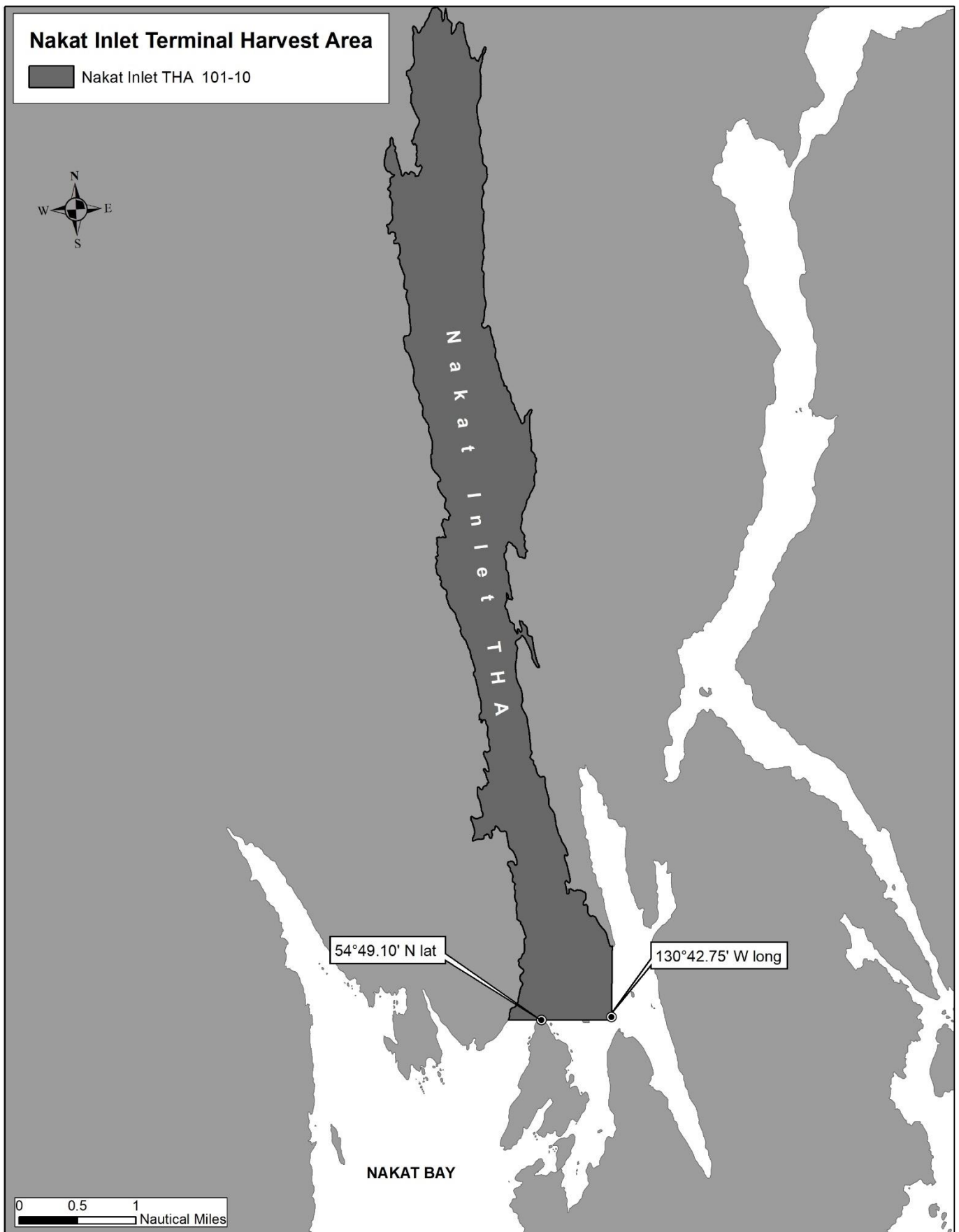


Figure 1.—Nakat Inlet THA.

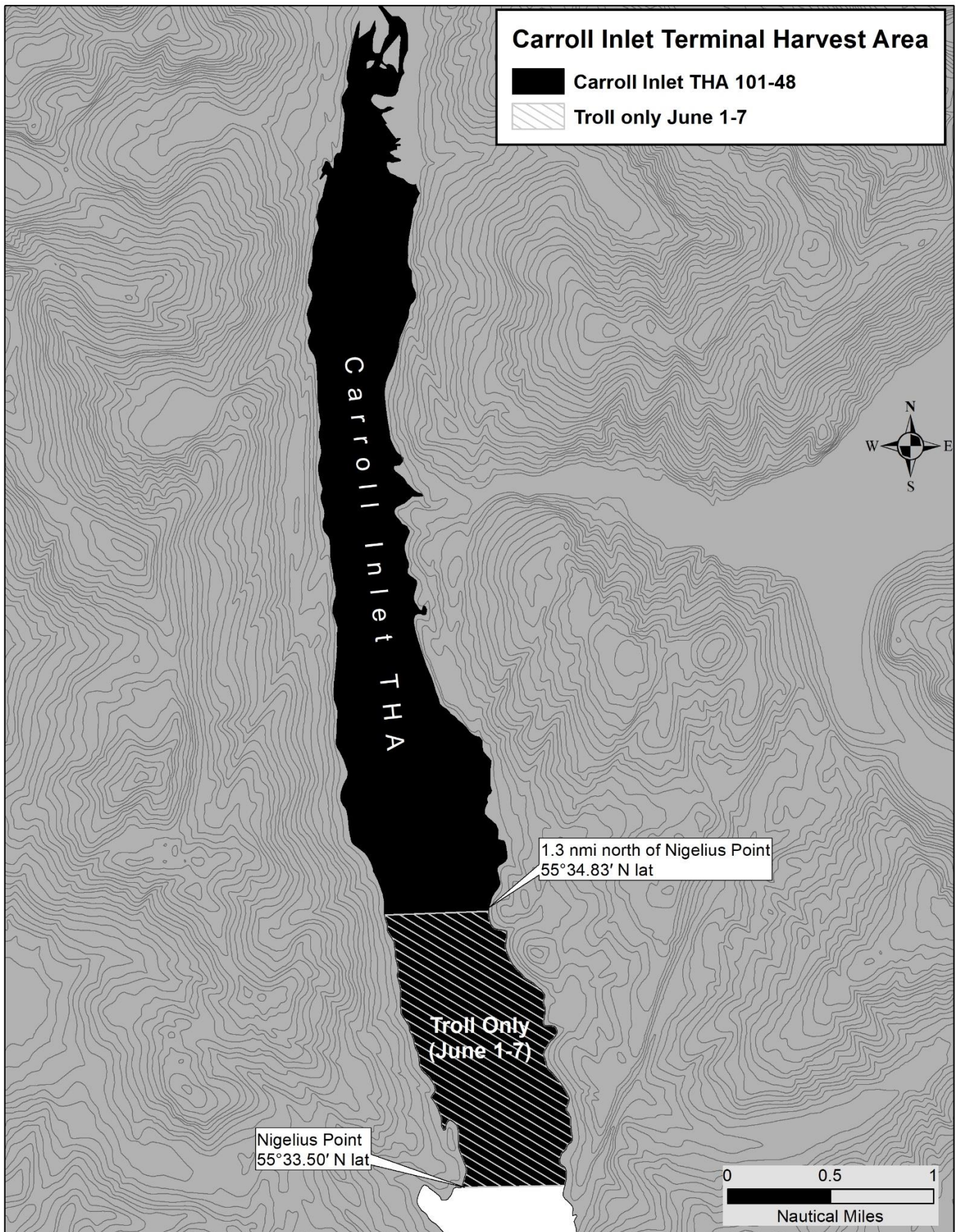


Figure 2.—Carroll Inlet THA.

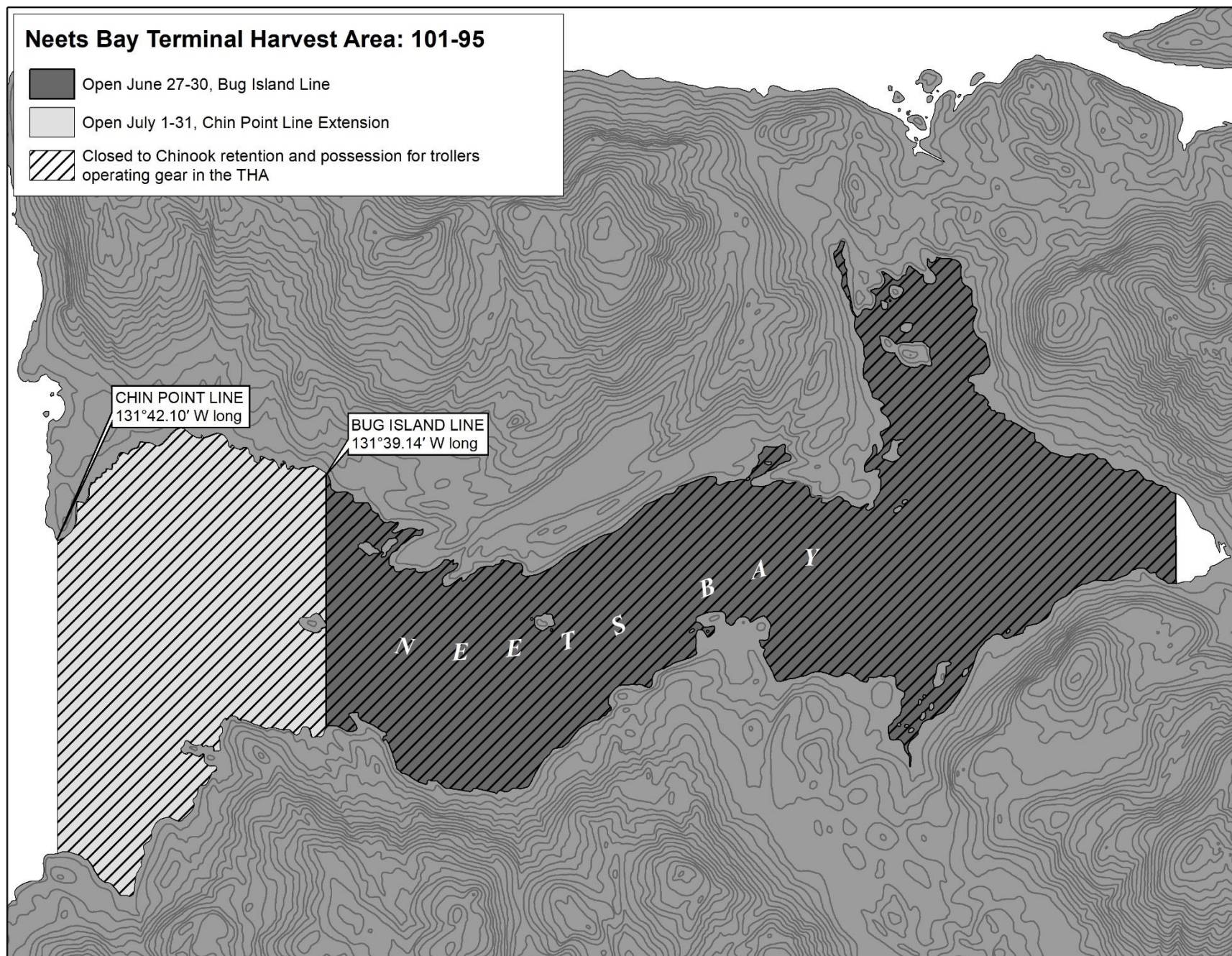


Figure 3.—Neets Bay THA.

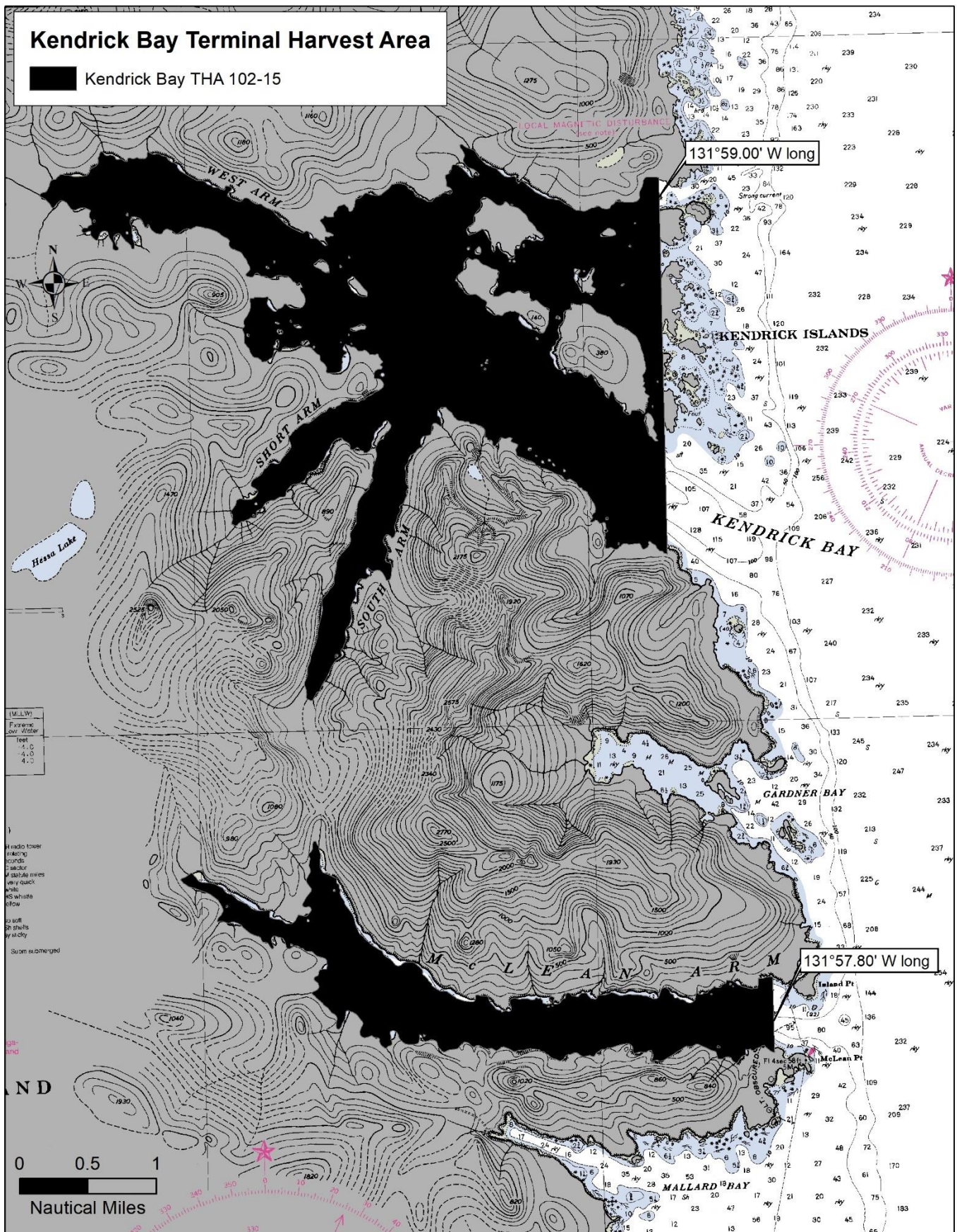


Figure 4.—Kendrick Bay THA.

## CRAIG AND WRANGELL AREAS

**Port Saint Nicholas THA (fishery area 103-63):** In the waters of Port Saint Nicholas and Bucareli Bay enclosed by a line from Cape Suspiro at 55°27.47' N lat, 133°08.50' W long, to the northernmost tip of Toti Island at 55°24.90' N lat, 133°07.34' W long, to Point Miraballes at 55°25.85' N lat, 133°05.23' W long will be open from 12:01 a.m., Sunday, June 1, through 11:59 p.m., Thursday, July 31, unless closed by emergency order. **The waters of the Port Saint Nicholas Special Harvest Area (SHA) east of 133°02.92' W long are closed to common property fisheries during terminal harvest fishery openings** (Figure 5).

**Anita Bay THA (fishery area 107-35):** In the waters of Anita Bay south and west of a line from the tip of Anita Point at 56°13.68' N lat, 132°22.48' W long, to a point on the northern shore at 56°14.26' N lat, 132°23.93' W long. Portions of the THA will be open from 12:01 a.m., Sunday, June 1, through 11:59 p.m., Monday, November 10 as indicated below. (Figure 6).

From 5:00 a.m., Sunday, June 1 through 12:00 noon, Thursday, June 12, the waters of the Anita Bay THA north and east of a line from 56°12.90' N lat, 132°24.51' W long, to 56°12.75' N lat, 132°23.50' W long, are open to troll gear only.

As described in 5 AAC 33.383(b)(1), from 12:01 a.m., Sunday, June 15 through 11:59 p.m., Thursday, July 10, the waters within 0.25 nmi of the northern shoreline of Anita Bay west of a line from 56°12.33' N lat, 132°26.19' W long, to 56°12.06' N lat, 132°26.19' W long, and east of a line from 56°11.96' N lat, 132°29.57' W long, to 56°11.73' N lat, 132°29.36' W long will be open.

**NOTE:** *waters south and west of the waters described in 5 AAC 33.383(b)(1) are closed to commercial salmon fishing as follows:*

- (1) from Sunday, June 15 through Wednesday, June 25, the waters of the Anita Bay THA west of 132°26.19' W long, are closed to the harvest of salmon.*
- (2) from Thursday, June 26 through Tuesday, July 1, the waters of Anita Bay THA west of 132°26.98' W long, are closed to the harvest of salmon.*
- (3) from Wednesday, July 2 through Thursday, July 10, the waters of Anita Bay THA west of 132°28.00' W long, are closed to the harvest of salmon.*

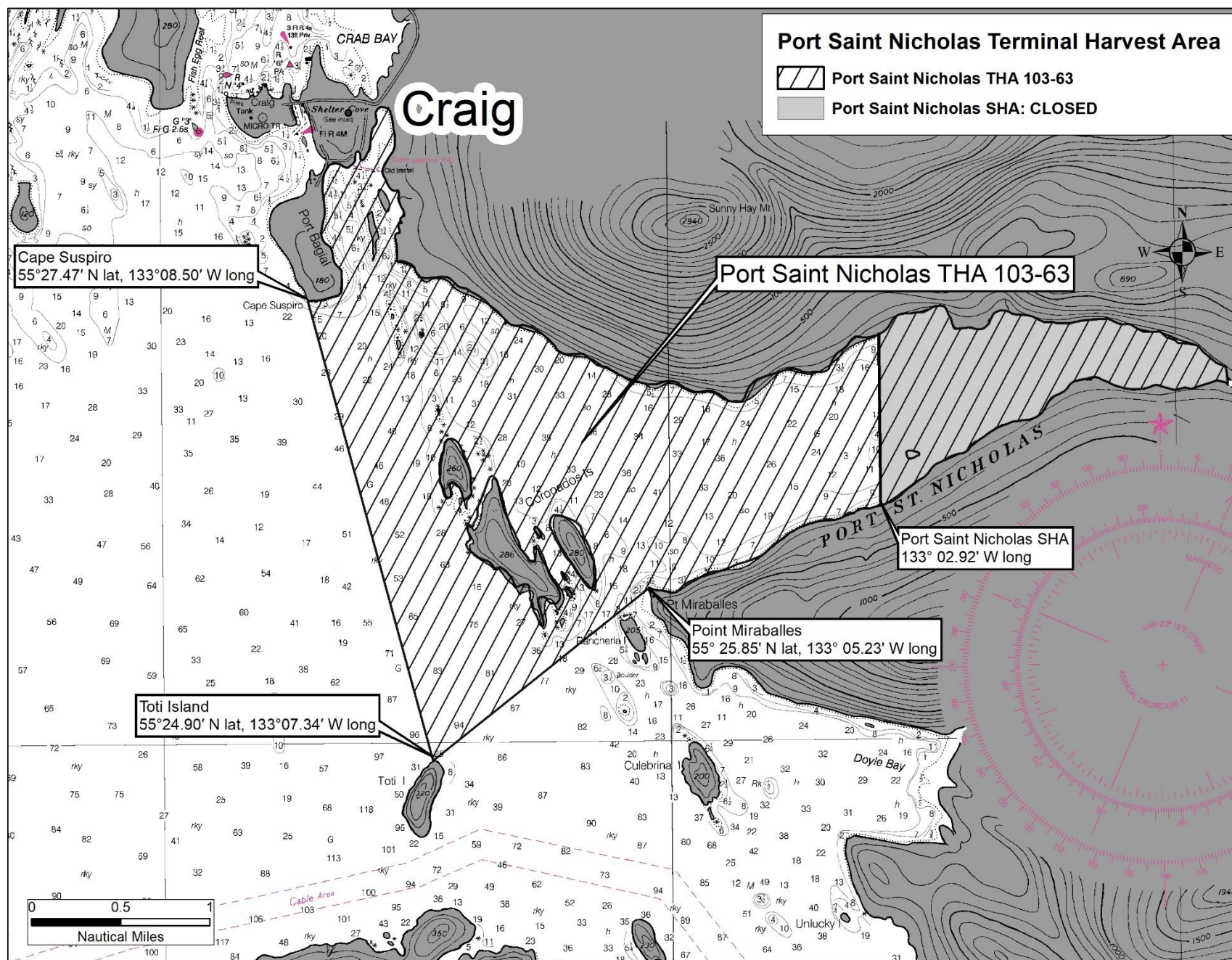


Figure 5.—Port Saint Nicholas THA.

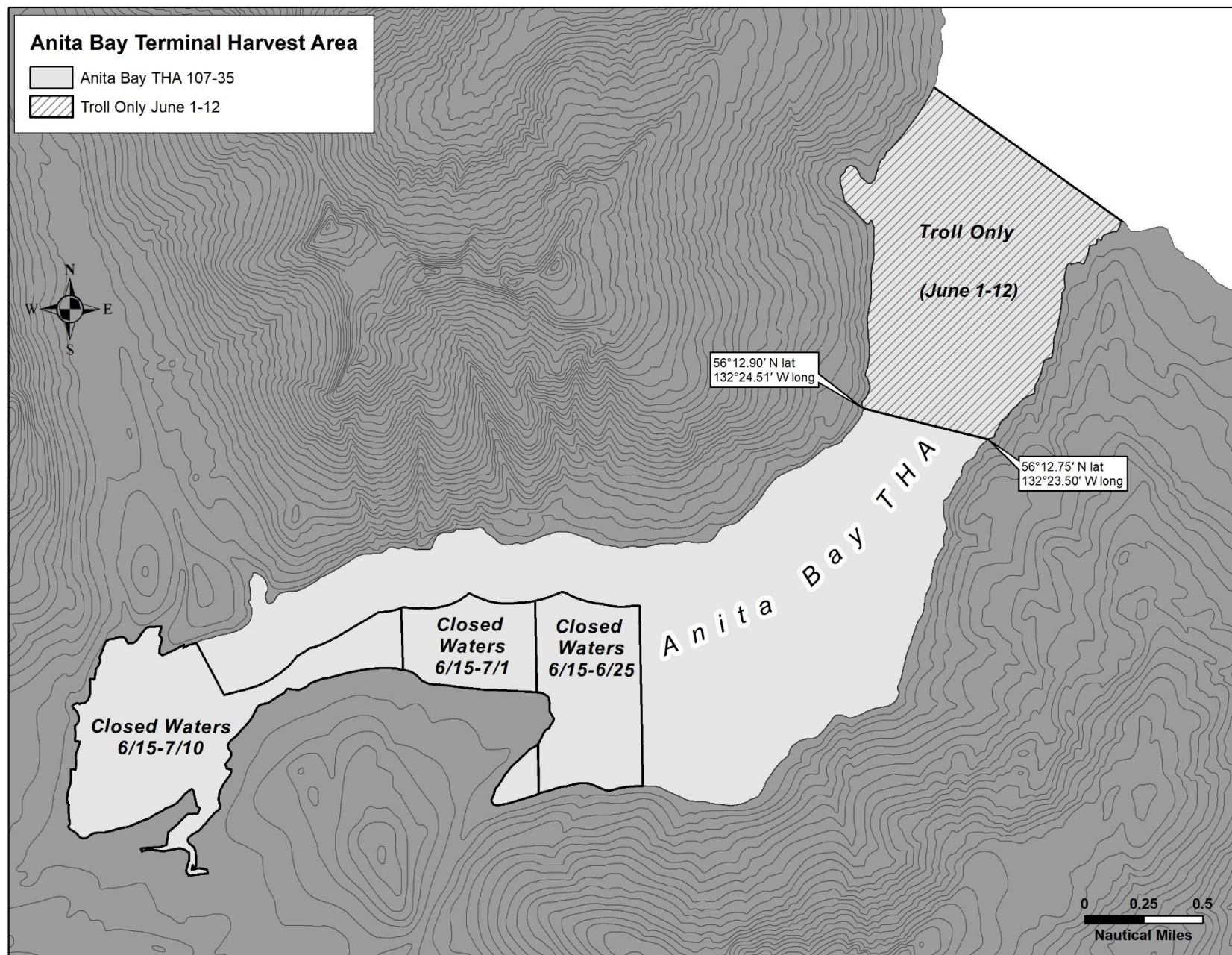


Figure 6.—Anita Bay THA.

## FREDERICK SOUND AREAS

**Gunnuk Creek THA (fishery area 109-40):** In the waters of Keku Strait enclosed by a line from a point northwest of Kake at 56°58.92' N lat, 133°57.48' W long to the southernmost tip of the southern Mosquito Island at 56°58.22' N lat, 133°58.85' W long, to the northwest tip of Hamilton Island at 56°56.45' N lat, 133°55.66' W long, to Wooten's Dock at 56°57.55' N lat, 133°54.78' W long will be open from 12:01 a.m., Sunday, June 1, through 11:59 p.m., Monday, June 30, unless closed by emergency order (Figure 7).

**Southeast Cove THA (fishery area 109-41):** In the waters of Keku Strait enclosed by a line from a rocky point on the northern end of Kuiu Island located on the east side of Southeast Cove at 56°52.92' N lat, 134°01.49' W long, to the northern tip of Hound Island at 56°53.12' N lat, 133°56.83' W long, then northwest connecting points along the northern shore of Keku Islands at 56°53.98' N lat, 133°57.69' W long, to 56°55.85' N lat, 134°01.00' W long, to 56°55.85' N lat, 134°02.21' W long, to 56°55.20' N lat, 134°02.66' W long, then to the northwest corner of Payne Island at 56°57.40' N lat, 134°08.82' W long, then south to a point on Kuiu Island at 56°55.02' N lat, 134°09.26' W long will be open continuously from 12:01 a.m., Sunday, June 1 through 11:59 p.m., Saturday, June 14, and from 12:01 a.m. to 11:59 p.m., Monday, Tuesday, Wednesday, and Saturday each week from Monday, June 16 through Saturday, July 5. Cost recovery will occur in the Southeast Cove THA beginning Monday, July 7, and the THA will remain closed to all common property fisheries until cost recovery has been completed (Figure 8).

**Thomas Bay THA (fishery area 110-12):** In the waters of Thomas Bay northeast of a line from Point Vandeput at 57°00.96' N lat, 133°00.02' W long, to Wood Point at 56°59.55' N lat, 132°56.96' W long, northwest of a line from a point on the mainland shoreline at 56°59.57' N lat, 132°54.02' W long, to Ruth Island at 57°00.42' N lat, 132°51.07' W long, north of a line from a point on the southeastern shoreline of Ruth Island at 56°58.70' N lat, 132°49.16' W long, to the mainland shoreline at 56°58.70' N lat, 132°47.32' W long, west of a line from the mainland shoreline at 56°59.38' N lat, 132°47.60' W long, to the southern tip of Spray Island at 56°59.80' N lat, 132°47.73' W long, to the northern tip of Spray Island at 57°00.07' N lat, 132°47.80' W long, to the mainland shoreline at 57°00.56' N lat, 132°47.57' W long, and south of a line from 57°03.00' N lat, 132°49.62' W long, to 57°03.00' N lat, 132°52.03' W long. will be open for troll gear in portions of the THA during those periods the purse seine fishery is closed from 12:01 a.m., Sunday, June 15 through 11:59 p.m., Saturday, August 9 (Figure 9).

The waters of Spurt Cove are closed northwest of a line from 57°01.98' N lat, 132°52.49' W long, to 57°02.08' N lat, 132°52.37' W long.

Waters northeast of a line from the northern tip of Spray Island at 57°00.07' N lat, 132°47.80' W long, to a point on the northern boundary line approximately 0.5 nmi from the mainland shoreline at 57°03.00' N lat, 132°50.55' W long, are closed Saturdays and Sundays of each week from 12:01 a.m., Saturday to 11:59 p.m., Sunday.

**Hidden Falls THA (fishery area 112-22):** As modified by emergency order, only those waters of District 12 south of the latitude of South Point at 57°16.28' N lat, north of 57°06.76' N lat, and west of a line from a point offshore at 57°16.28' N lat, 134°49.94' W long to a point offshore at 57°06.76' N lat, 134°45.37' W long. will be open from 12:01 a.m., Sunday, June 1, through 11:59 p.m., Sunday, July 6, unless closed by emergency order. Beginning Sunday, June 22, the THA will expand to include waters of District 12 south of the latitude of South Point at 57°16.28' N lat, north of 57°06.76' N lat, and west of a line from a point offshore at 57°16.28' N lat, 134°48.00' W long, to a point offshore at 57°06.76' N lat, 134°43.00' W long, excluding the waters of Kelp Bay. Beginning July 7, all waters of the THA will close to common property fisheries to facilitate cost recovery operations. Dependent upon run timing, strength, and cost recovery progress, select areas of the THA may reopen to common property fisheries during cost recovery efforts. (Figure 10)

The waters of the Hidden Falls THA that are north and west of a line from ADF&G regulatory markers located at 57°13.17' N lat, 134°51.86' W long to 57°13.08' N lat, 134°52.02' W long and north of a line from

57°13.05' N lat, 134°52.24' W long to 57°13.06' N lat, 134°52.20' W long, **are closed to commercial salmon fishing** (5 AAC 33.374[g]).

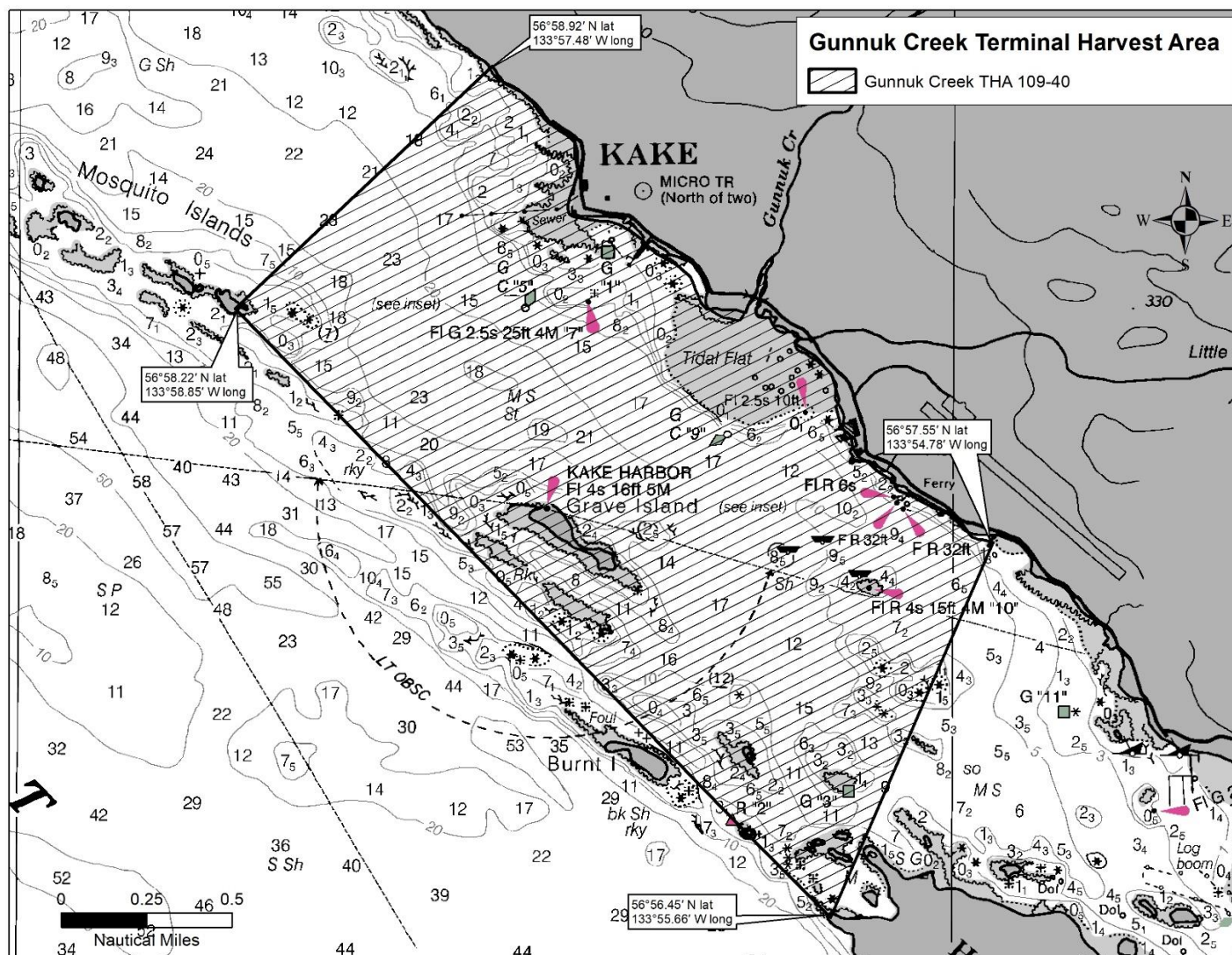


Figure 7.—Gunnuk Creek THA.

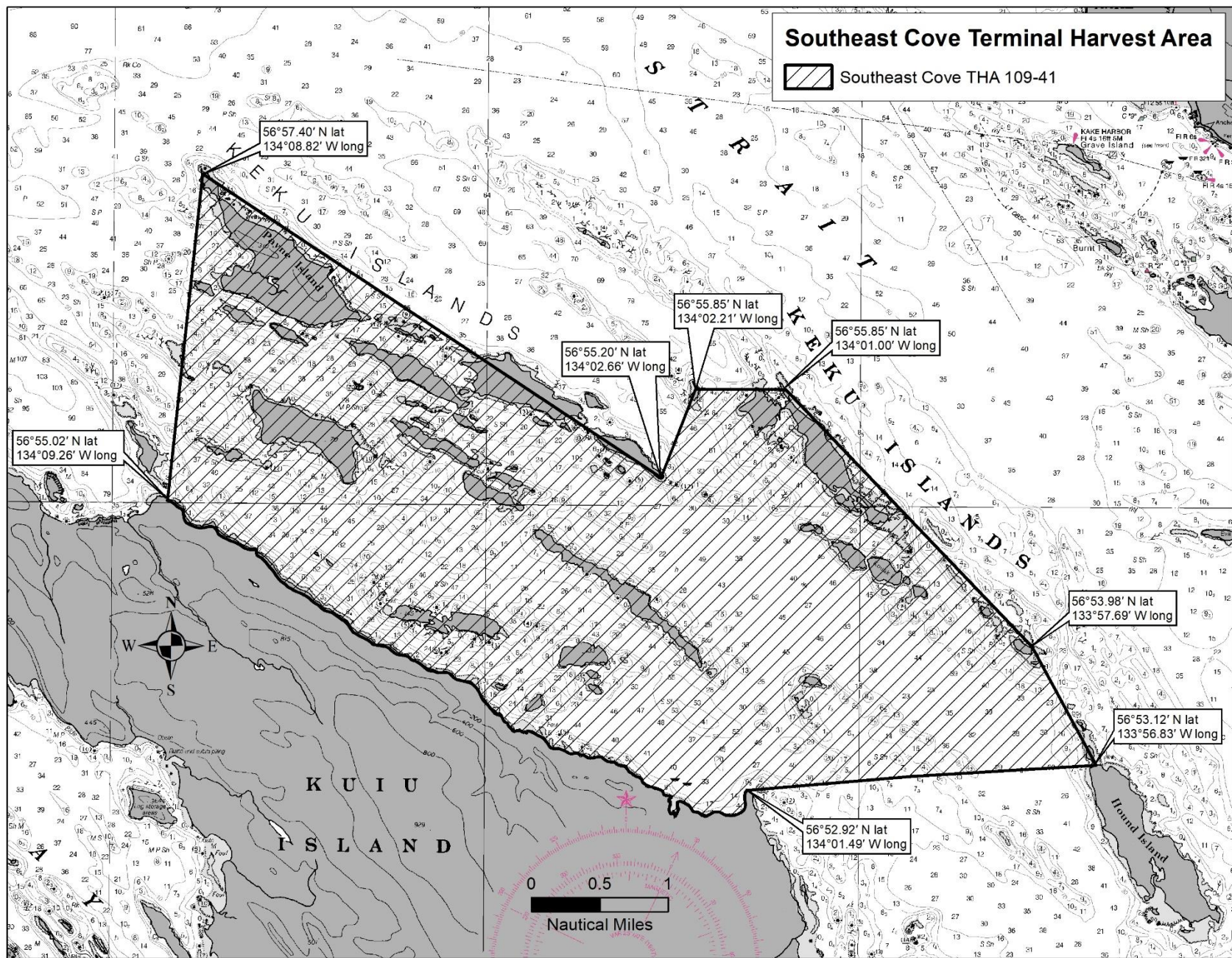


Figure 8.—Southeast Cove THA.

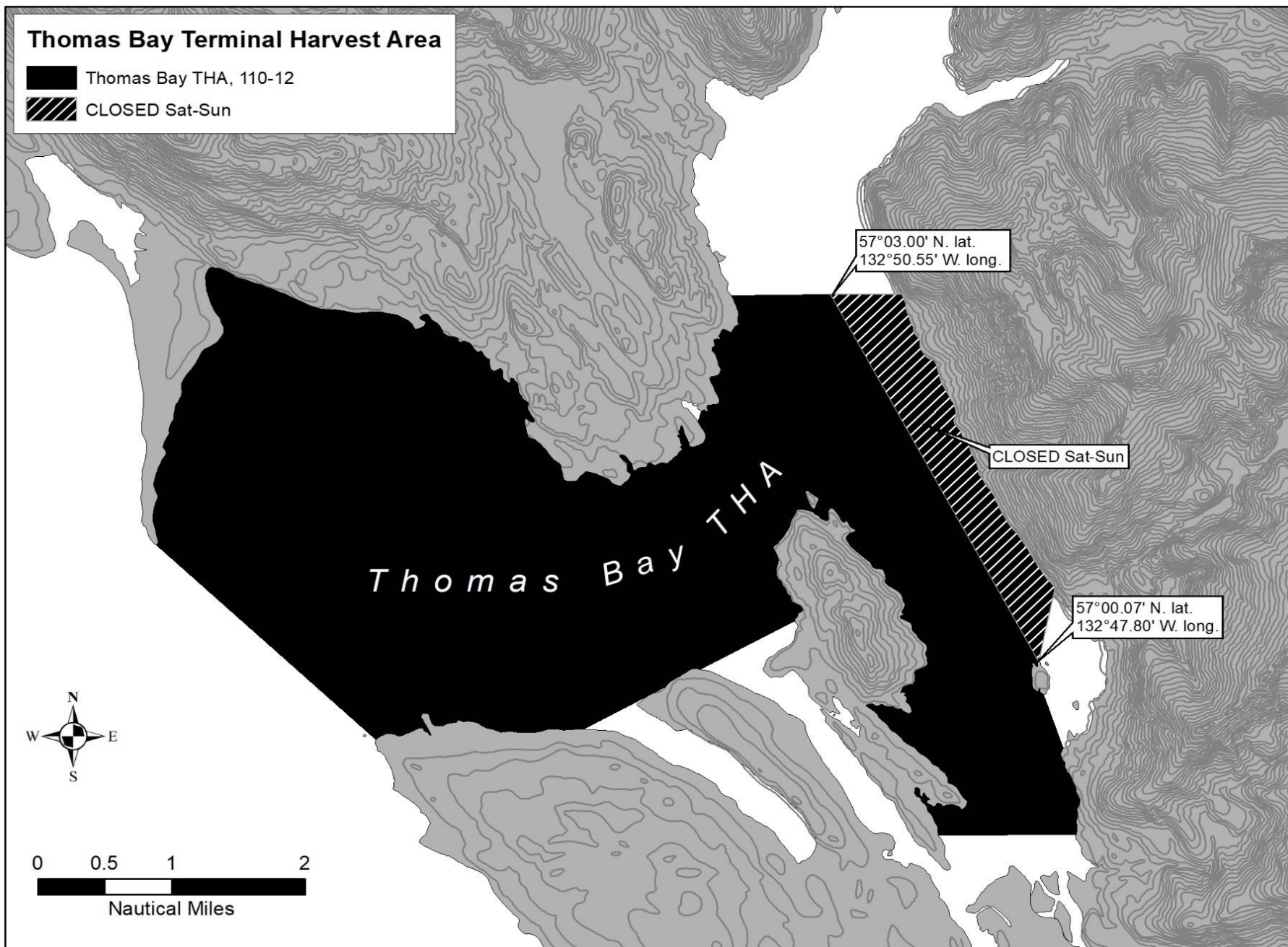
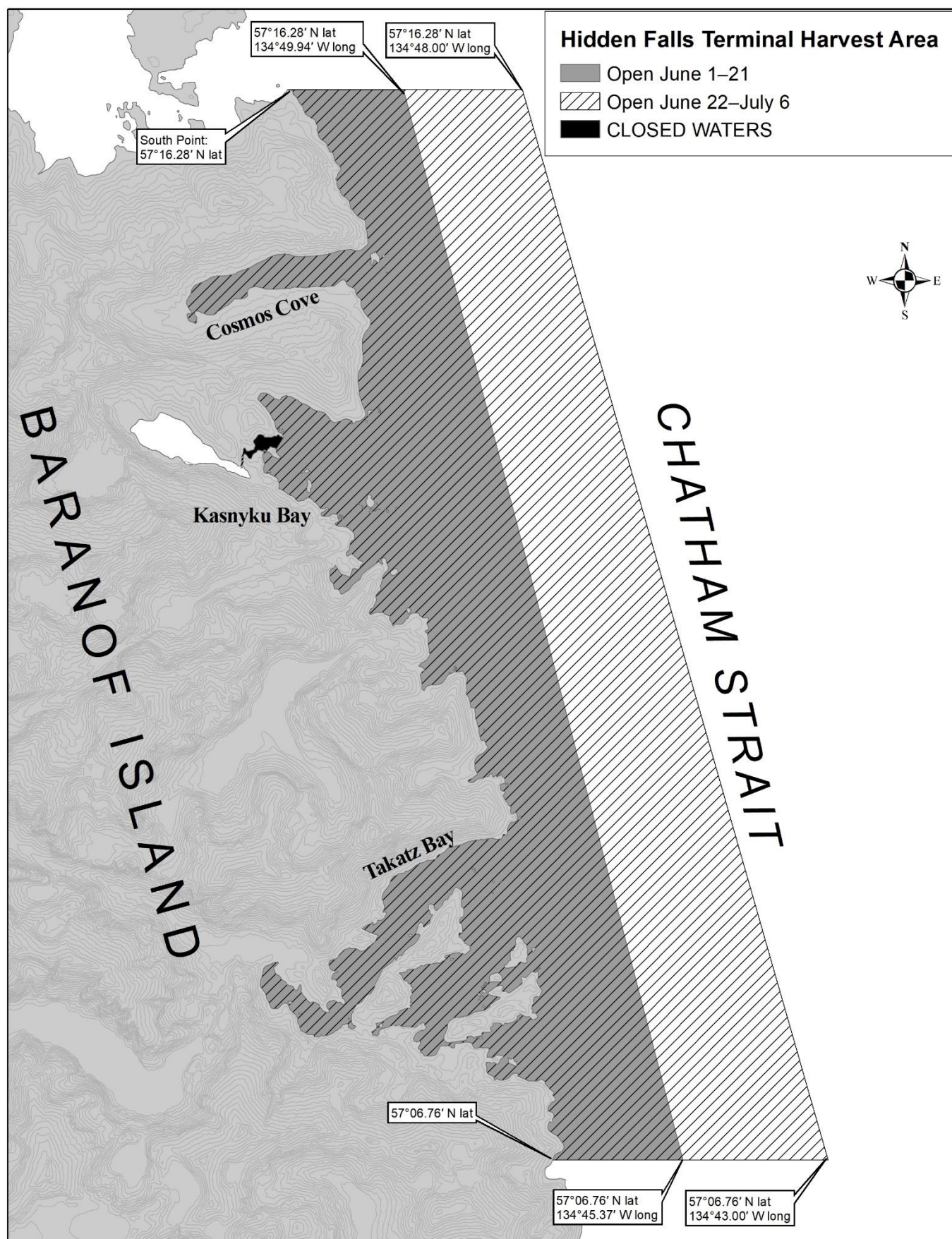


Figure 9.—Thomas Bay THA.



## SITKA AREAS

**Crawfish Inlet THA and SHA (fishery area 113-33):** As modified by emergency order, in the waters east of a line from 56°44.21' N lat, 135°15.76' W long, to 56°43.30' N lat, 135°17.80' W long, to 56°41.93' N lat, 135°17.54' W long, to 56°41.14' N lat, 135°13.80' W long, including the waters of Jamboree Bay and Cedar Pass south of 56°47.14' N lat, and Crawfish Inlet west of 135°11.05' W long will be open from 12:01 a.m., Sunday, June 1, through 11:59 p.m., Saturday, September 20, unless closed by emergency order. Waters of the SHA east of 135°11.05' W long, will be open to troll gear as part of the THA, from June 1 through July 26. From July 27 through September 20, unless closed by emergency order, trollers may fish continuously in the troll exclusive area located outside the waters of the Crawfish Inlet SHA (Figure 11).

**Silver Bay THA (fishery area 113-35):** In the waters of Silver Bay east of a line from Entry Point Light at 57°01.96' N lat, 135°15.01' W long, to Silver Point at 57°00.80' N lat, 135°18.09' W long will be open from 12:01 a.m., Sunday, June 1, through 11:59 p.m., Wednesday, July 30, unless closed by emergency order. The waters of Bear Cove are closed to commercial troll gear east of a line from a point on the south shore at 57°00.77' N lat, 135°09.08' W long, to the north shore at 57°00.94' N lat, 135°09.23' W long. (Figure 12)

**Deep Inlet THA (fishery area 113-38):** In the waters of Deep Inlet, Aleutkina Bay, and contiguous waters south of a line from a point west of Pirate Cove at 56°59.35' N lat, 135°22.63' W long, to the westernmost tip of Long Island at 56°59.98' N lat, 135°21.93' W long, to the easternmost tip of Long Island at 56°59.95' N lat, 135°20.37' W long, to the westernmost tip of Emgeten Island at 57°00.08' N lat, 135°20.01' W long, to the westernmost tip of Error Island at 57°00.54' N lat, 135°19.50' W long, to the westernmost tip of Berry Island at 57°00.32' N lat, 135°18.68' W long, to the southernmost tip of Berry Island at 57°00.28' N lat, 135°18.52' W long, to the westernmost tip of the southernmost island in the Kutchuma Island group at 57°00.14' N lat, 135°18.27' W long, to the easternmost tip of the southernmost island in the Kutchuma Island group at 57°00.06' N lat, 135°17.95' W long, to the westernmost tip of an unnamed island at 57°00.29' N lat, 135°17.66' W long, to a point on the southern side of the unnamed island at 57°00.07' N lat, 135°16.80' W long, to a point on the Baranof Island shore at 56°59.93' N lat, 135°16.53' W long, the troll fishery will be open on Saturday of each week and during those periods the net fisheries are closed, from 12:01 a.m., Sunday, June 1, through 11:59 p.m., Saturday, June 28 and 12:01 a.m., Sunday, August 3, through 11:59 p.m., Saturday, August 9, unless closed by emergency order. (Figure 13)

**NSRAA anticipates conducting cost-recovery operations in the Deep Inlet THA beginning June 29. To accommodate cost-recovery operations, the entire Deep Inlet THA will be closed to all common property harvest from June 29 to August 2 and from August 10 until cost-recovery operations are completed. The 500-yard stream closure restrictions under 5 AAC 39.290(a)(2) are not in effect for Deep Inlet THA salmon streams (all freshwaters and stream channels remain closed).**

**From June 1 through June 21, the waters of the Deep Inlet THA west of 135°20.75' W long, will be open continuously to troll gear, with waters of the THA east of 135°20.75' W long, open to troll gear on Saturdays and during periods the net fisheries are closed. On June 22, all waters of the Deep Inlet THA will follow the rotational schedule with troll openings occurring on Saturdays and during those periods when net fisheries are closed.**

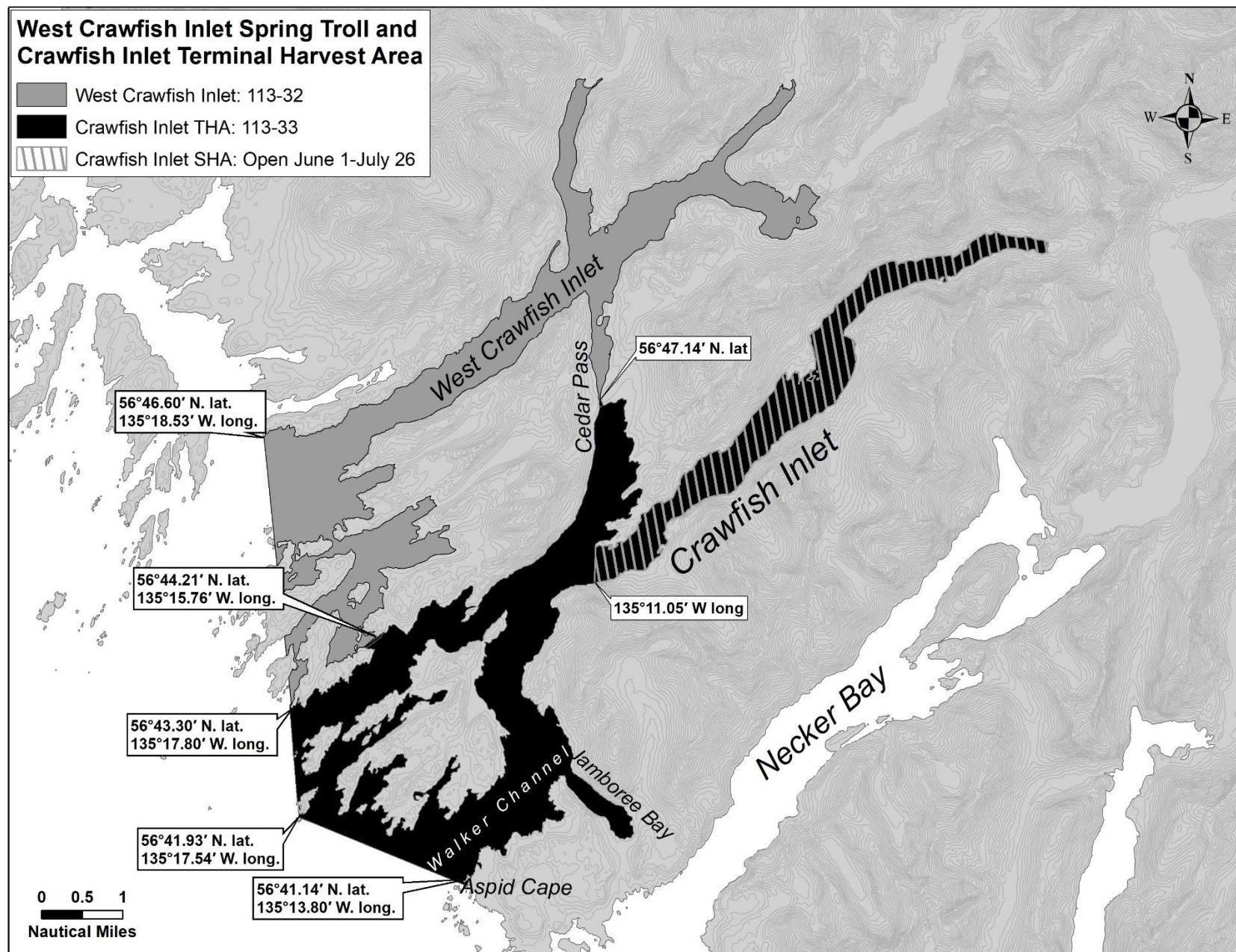


Figure 11.—Crawfish Inlet THA, Crawfish Inlet SHA, and West Crawfish spring troll area.

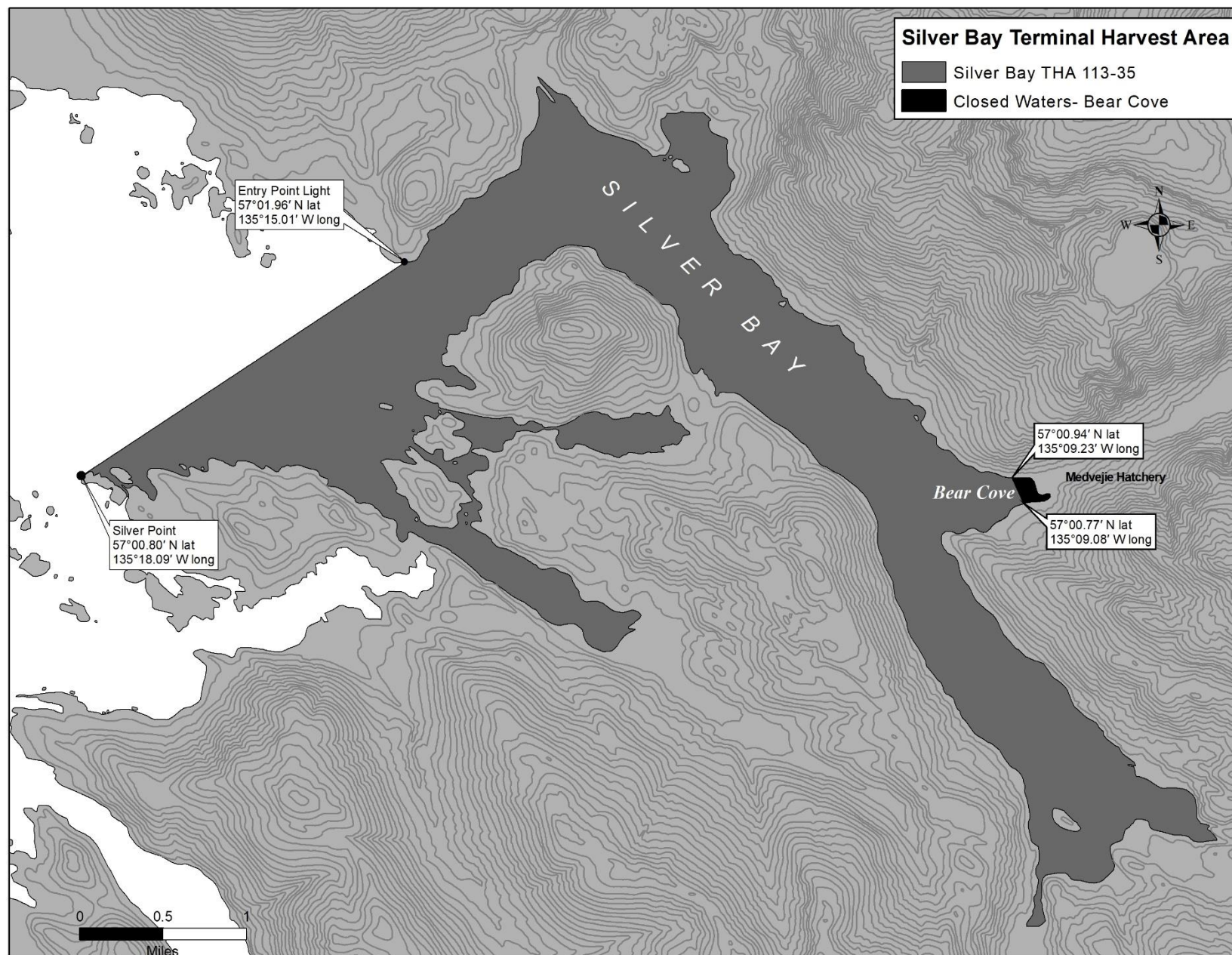


Figure 12.-Silver Bay THA.

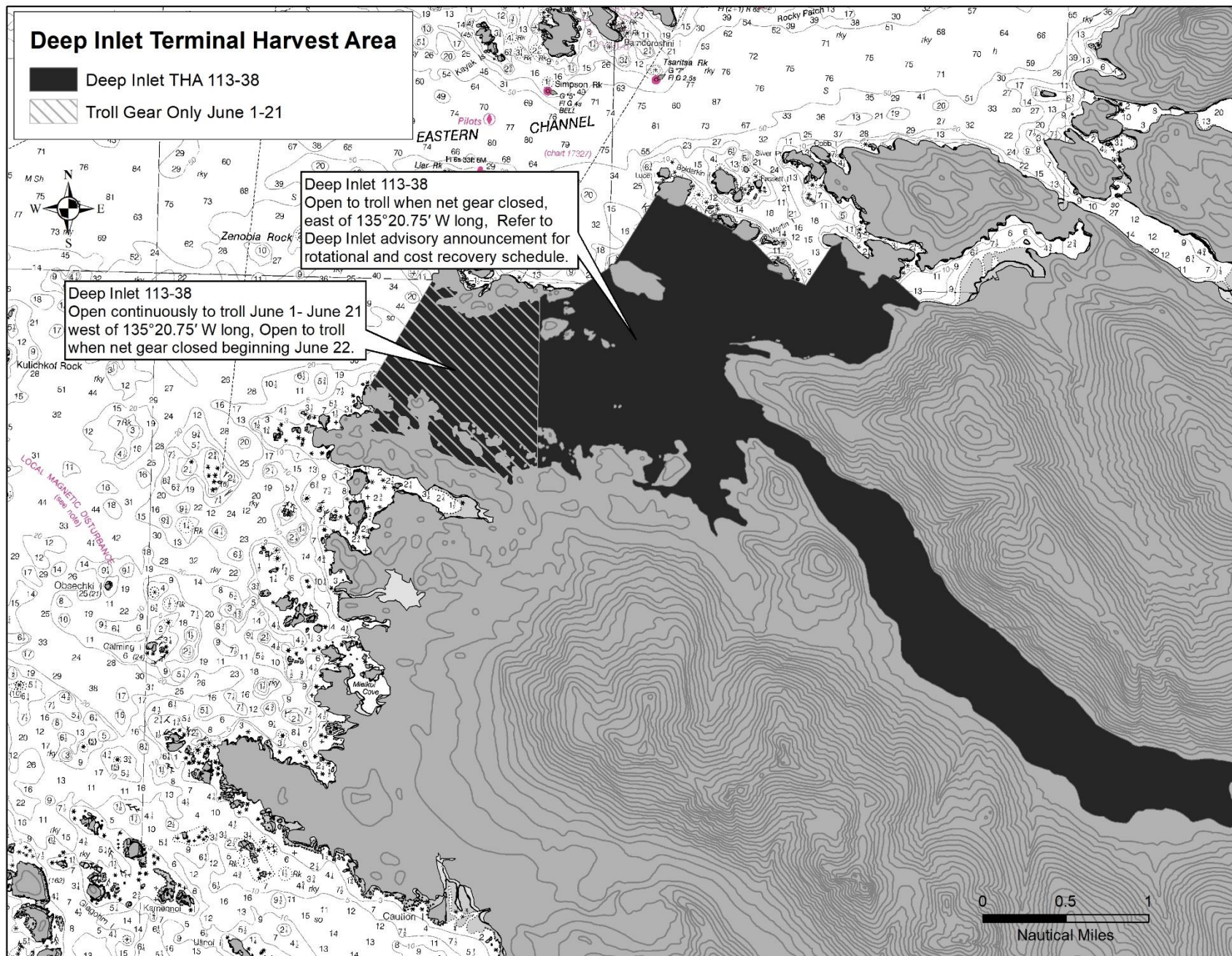


Figure 13.—Deep Inlet THA.

## **FISHERY CONTACTS**

The following are Division of Commercial Fisheries contacts regarding management of troll fisheries in THAs:

Grant Hagerman  
Troll Management Biologist  
304 Lake Street, #103  
Sitka, Alaska 99835  
(907) 747-6688

Troy Thynes  
Regional Management Coordinator  
P. O. Box 667  
Petersburg, Alaska 99833  
(907) 772-3801

Mike Vaughn  
Assistant Troll Management Biologist  
304 Lake Street, #103  
Sitka, Alaska 99835  
(907) 747-6688

Anne Reynolds Manney  
Southeast Alaska Regional Supervisor  
2030 Sea Level Drive Suite 205  
Ketchikan, Alaska 99901  
Phone: (907) 228-3013  
Mobile: (907) 209-9984

For updated information on the troll fishery, call the 24-hour information line in the Douglas (907) 465-TROL (8765), Sitka (907) 747-8765, or Ketchikan (907) 225-6870.

### **SOUTHEAST ALASKA TROLL WEBSITE INFORMATION:**

<https://www.adfg.alaska.gov/index.cfm?adfg=commercialbyareasoutheast.salmon#harvest>