

2023 Spring Troll and Terminal Harvest Areas

by

Grant Hagerman

and

Michael Vaughn

April 2023

Alaska Department of Fish and Game

Division of Commercial Fisheries



LIST OF FIGURES

Figure	Page
Figure 1.–Ketchikan spring troll areas.....	2
Figure 2.–Carroll Inlet Terminal Harvest Area.....	3
Figure 3.–Neets Bay Terminal Harvest Area.....	4
Figure 4.–Nakat Inlet Terminal Harvest Area.	5
Figure 5.–Kendrick Bay Terminal Harvest Area.	6
Figure 6.–Craig spring troll areas.	9
Figure 7.–Port Saint Nicholas Terminal Harvest Area.	10
Figure 8.–Anita Bay Terminal Harvest Area.	11
Figure 9.–Chatham Strait and Frederick Sound spring troll areas.	14
Figure 10.–Southeast Cove Terminal Harvest Area.	15
Figure 11.–Thomas Bay Terminal Harvest Area.	16
Figure 12.–Hidden Falls Terminal Harvest Area.....	17
Figure 13.–Sitka spring troll areas.....	20
Figure 14.–West Crawfish Inlet spring troll, Crawfish Inlet Terminal Harvest Areas.	21
Figure 15.–Silver Bay Terminal Harvest Area.	22
Figure 16.–Deep Inlet Terminal Harvest Area.	23
Figure 17.–North Chatham Strait and Icy Strait spring troll chum salmon areas.	25
Figure 18.–Yakutat Bay spring troll area.....	26
Figure 19.–Southeast Alaska lingcod management areas and restricted waters of Sitka Sound Special Use Area.	27

2023 SPRING TROLL AREAS AND MAPS

KETCHIKAN AREAS

Nakat Inlet Terminal Harvest Area (fishery area 101-10): In the waters north of Surprise Point at 54°49.10' N lat and west of 130°42.75' W long from 12:01 a.m., June 1 through 11:59 p.m. November 10. The 500-yard stream closure regulation under 5 AAC 39.290(a)(2) will remain in effect in the Nakat Inlet THA, except during spring troll fisheries, as specified in 5 AAC 29.150(a)(2). (Figure 4).

Mountain Point (fishery area 101-45): In the waters of George and Carroll Inlets north of a line from Mountain Point at 55°17.57' N lat, 131°32.41' W long, to Cutter Rocks Light at 55°17.34' N lat, 131°31.47' W long, to 55°17.57' N lat, 131°28.18' W long, including all waters of George Inlet and waters of Carroll Inlet south of the latitude of California Head at 55°19.57' N lat (Figure 1).

Rock Point (fishery area 101-46): In the waters of Carroll Inlet north of the latitude of California Head at 55°19.57' N lat, and south of the latitude of Nigelius Point at 55°33.50' N lat (Figure 1).

Carroll Inlet Terminal Harvest Area (fishery area 101-48): In the waters of Carroll Inlet north of the latitude of Nigelius Point at 55°33.50' N lat, open to troll gear from 12:01 a.m., June 1 through 11:59 p.m. June 30. The waters north of the latitude of Nigelius Point and south of the latitude of 55°34.83' N lat (approximately 1.3 nautical mile [nmi] north of Nigelius Point) are open exclusively to troll gear from 12:01 a.m., June 1 through 12:00 noon, June 15. (Figures 1 and 2).

Concurrent openings for troll, drift gillnet, and purse seine are scheduled from 12:01 a.m., June 1 through 12:00 noon, June 12. All waters of the THA will be open exclusively for troll gear from 12:00 noon, June 12, to 12:00 noon, June 15. Rotational net gear fisheries are scheduled from 12:00 noon, June 15, through 12:00 noon, June 30.

Neets Bay Terminal Harvest Area (fishery area 101-95): In the waters of Neets Bay east of the longitude of the easternmost tip of Bug Island at 131°39.14' W long, and west of the closed waters at the head of the bay. The closed waters at the head of the bay are those waters east of 131°29.86' W long, until the barrier net is in place; at that time, the closed waters are those waters east of the barrier net (Figure 3).

The THA will remain open to troll gear from 12:01 a.m., June 15 until closed by emergency order. The Neets Bay THA will expand on July 1 for troll gear to include those waters of Neets Bay east of the longitude of Chin Point at 131°42.10' W long; however, Chinook salmon retention and possession is prohibited in this expanded area between the Bug Island line and Chin Point during the first summer troll Chinook salmon retention period. Beginning 12:00 noon, July 15, troll gear is restricted to the waters of Neets Bay that are west of the easternmost tip of Bug Island at 131°39.14' W long and east of the longitude of Chin Point at 131°42.10' W long.

Kendrick Bay Terminal Harvest Area (fishery area 102-15): In the waters of Kendrick Bay west of 131°59.00' W long, and the waters of McLean Arm west of 131°57.80' W long from 12:01 a.m., June 15, through 11:59 p.m., September 30. In 2023, the Kendrick Bay THA will not close for cost recovery operations. (Figure 5).

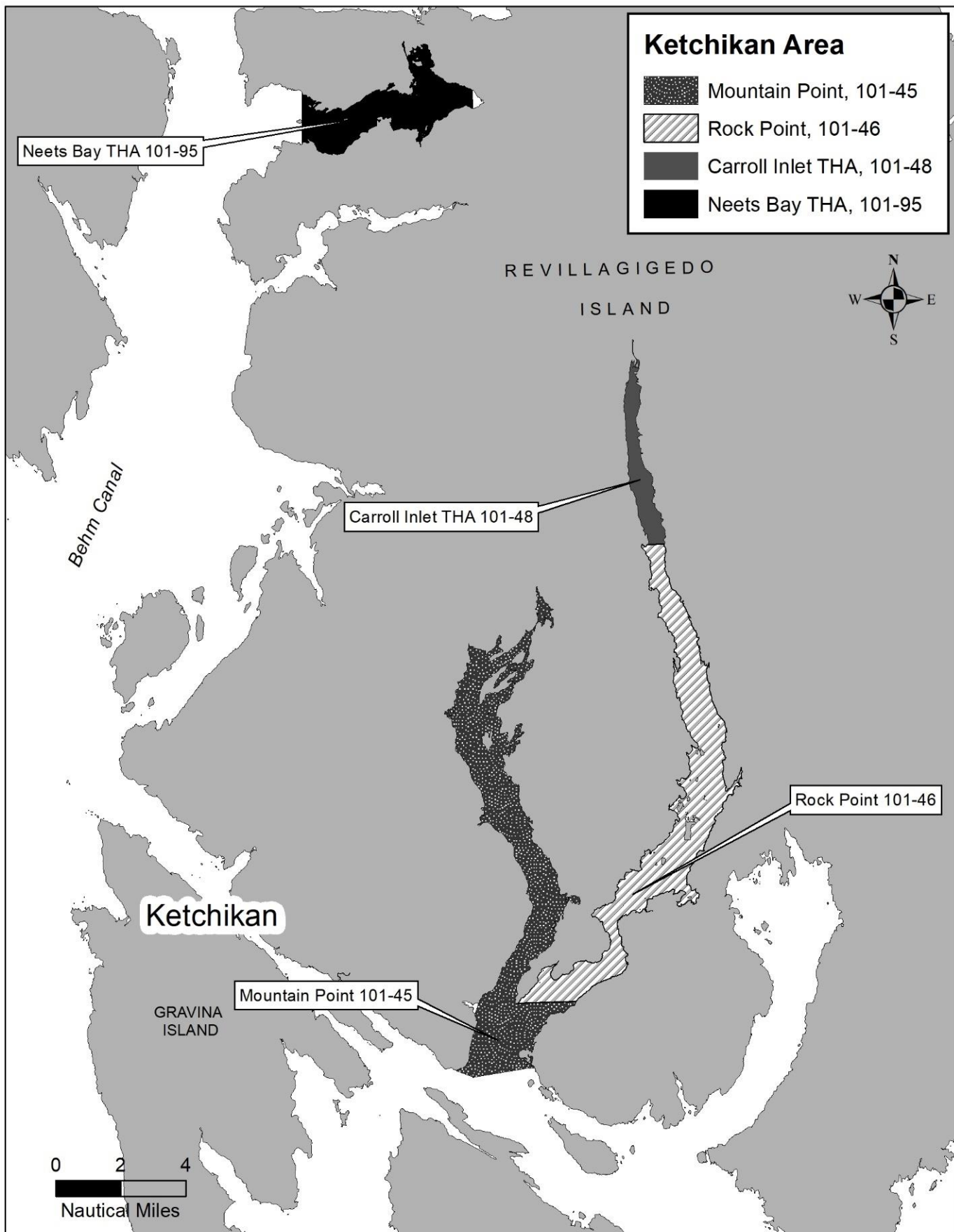


Figure 1.—Ketchikan spring troll areas.

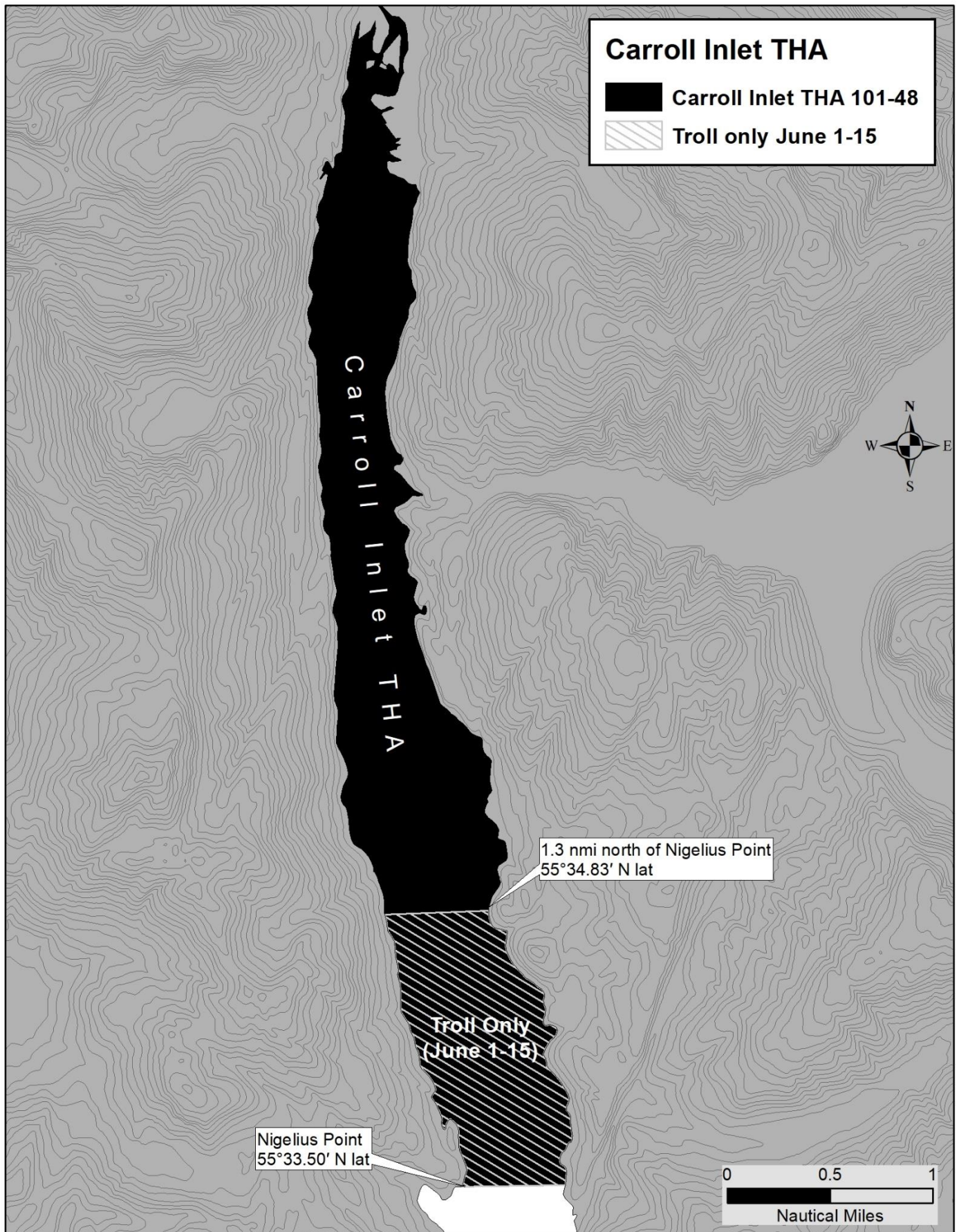


Figure 2.—Carroll Inlet Terminal Harvest Area.

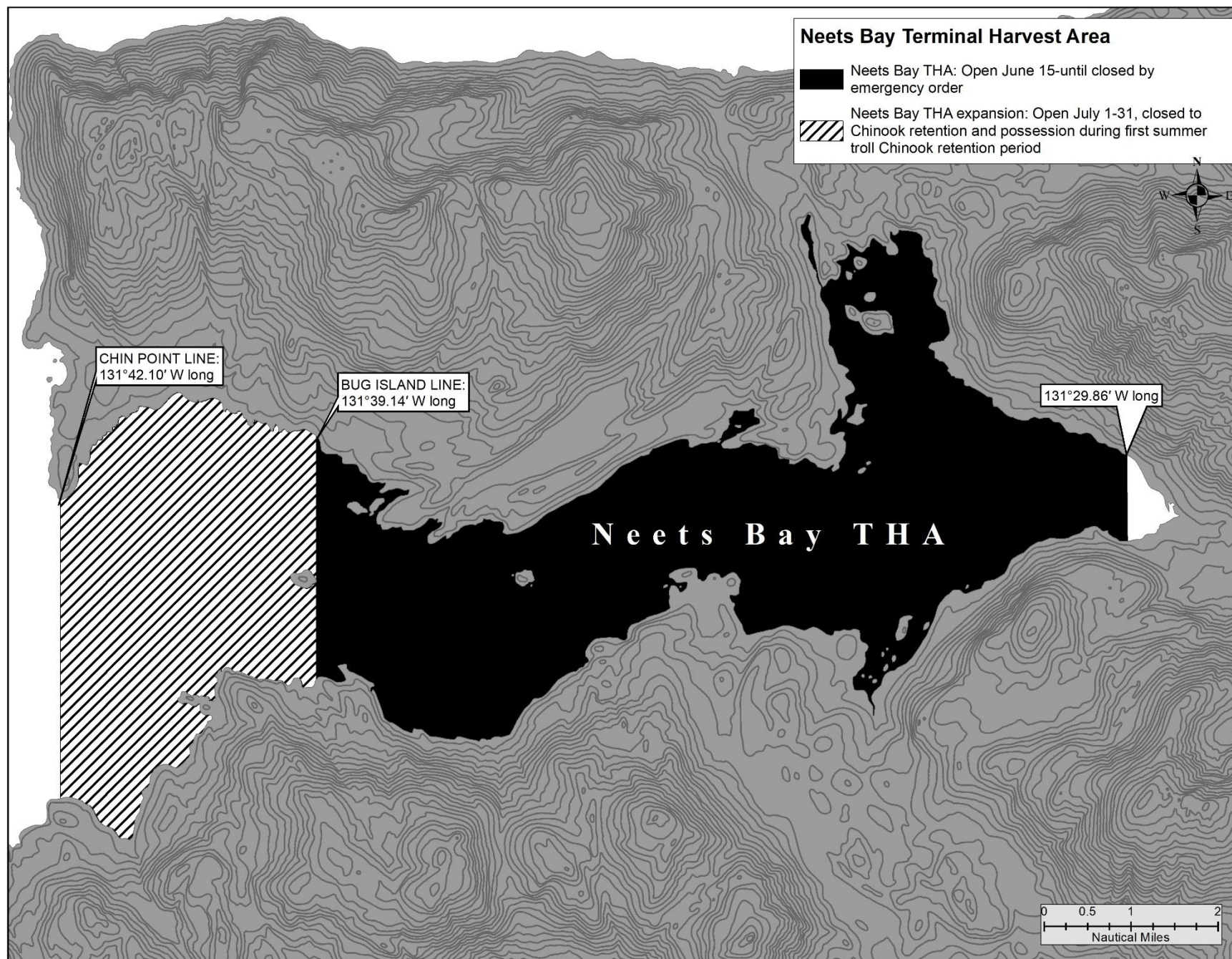


Figure 3.—Neets Bay Terminal Harvest Area.

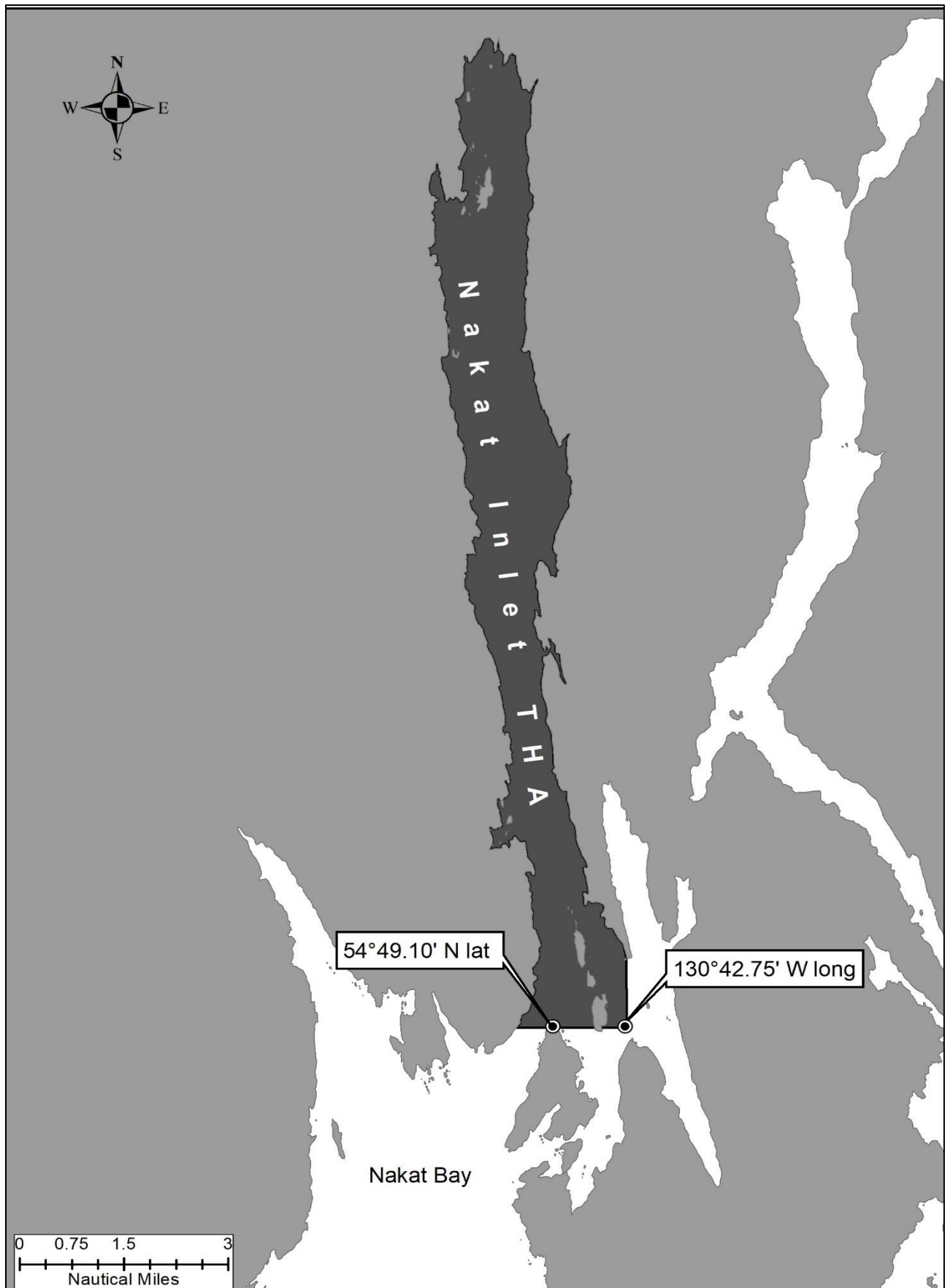


Figure 4.—Nakat Inlet Terminal Harvest Area.

4/19/2023

CRAIG AND WRANGELL AREAS

Bucareli Bay (fishery area 103-50) Modified Area: In the waters of Ursua Channel and Bucareli Bay south and east of a line from Cape Suspiro at 55°27.47' N lat, 133°08.50' W long, to the Ballena Island Shoal Light at 55°28.24' N lat, 133°13.25' W long, to Point Amargura at 55°27.00' N lat, 133°21.64' W long, to 55°24.67' N lat, 133°21.18' W long, to Point Providence at 55°21.51' N lat, 133°16.10' W long, and north and west of a line from Point Lomas at 55°22.65' N lat, 133°10.55' W long, to the western tip of Madre de Dios Island at 55°23.63' N lat, 133°09.65' W long, to the southernmost tip of Toti Island at 55°24.47' N lat, 133°07.43' W long, to the northernmost tip of Toti Island at 55°24.90' N lat, 133°07.34' W long, to Cape Suspiro at 55°27.47' N lat, 133°08.50' W long (Figure 6).

Trocadero Bay (fishery area 103-60) New Area: In the waters of Trocadero Bay south and east of a line from Point Lomas at 55°22.65' N lat, 133°10.55' W long, to the western tip of Madre de Dios Island at 55°23.63' N lat, 133°09.65' W long, to the southernmost tip of Toti Island at 55°24.47' N lat, 133°07.43' W long, to the northernmost tip of Toti Island at 55°24.90' N lat, 133°07.34' W long, to Point Miraballes at 55°25.85' N lat, 133°05.23' W long (Figure 6).

Port Saint Nicholas (fishery area 103-63) Modified Area: In the waters of Port Saint Nicholas and Bucareli Bay enclosed by a line from Cape Suspiro at 55°27.47' N lat, 133°08.50' W long, to the northernmost tip of Toti Island at 55°24.90' N lat, 133°07.34' W long, to Point Miraballes at 55°25.85' N lat, 133°05.23' W long (Figure 6).

Port Saint Nicholas Terminal Harvest Area (fishery area 103-63) Modified Area: In the waters of Port Saint Nicholas and Bucareli Bay enclosed by a line from Cape Suspiro at 55°27.47' N lat, 133°08.50' W long, to the northernmost tip of Toti Island at 55°24.90' N lat, 133°07.34' W long, to Point Miraballes at 55°25.85' N lat, 133°05.23' W long from 12:01 a.m., June 1, through 11:59 p.m., July 31, unless closed by emergency order. **The waters of the Port Saint Nicholas Special Harvest Area (SHA) east of 133°02.92' W long are closed to common property fisheries during terminal harvest fishery openings prosecuted in the period of June 1 through July 31.** (Figure 7).

San Alberto Bay (fishery area 103-70) New Area: In the waters of Ursua Channel, San Alberto Bay, and Shinaku and Klawock Inlets east of a line from Point Polocano at 55°32.35' N lat, 133°17.36' W long, to 55°34.60' N lat, 133°16.55' W long, south and west of a line from 55°34.88' N lat, 133°10.95' W long, to 55°35.20' N lat, 133°07.07' W long, to Cemetery Point at 55°33.84' N lat, 133°06.38' W long, to the northernmost tip of Klawock Island at 55°33.42' N lat, 133°06.38' W long, and north of a line from Cape Suspiro at 55°27.47' N lat, 133°08.50' W long, to the Ballena Island Shoal Light at 55°28.24' N lat, 133°13.25' W long, to Point Amargura at 55°27.00' N lat, 133°21.64' W long (Figure 6).

Anita Bay Terminal Harvest Area (fishery area 107-35): In the waters of Anita Bay south and west of a line from the tip of Anita Point at 56°13.68' N lat, 132°22.48' W long, to a point on the northern shore at 56°14.26' N lat, 132°23.93' W long. Troll gear may be operated in portions of the THA from 5:00 a.m., June 1 through 11:59 p.m., July 15, and after the conclusion of cost recovery through 11:59 p.m., November 10. Additional fishing opportunities for troll gear may be announced by emergency order in August after cost recovery is completed.

From 5:00 a.m., June 1 to 12:00 noon, June 12, the waters of the Anita Bay THA north and east of a line from 56°12.90' N lat, 132°24.51' W long, to 56°12.75' N lat, 132°23.50' W long, are open to troll gear only.

From 12:01 a.m., June 15 through 11:59 p.m., July 10, the waters within 0.25 nmi of the northern shoreline of Anita Bay west of a line from 56°12.33' N lat, 132°26.19' W long, to 56°12.06' N lat, 132°26.19' W long, and east of a line from 56°11.96' N lat, 132°29.57' W long to 56°11.73' N lat, 132°29.36' W long, will be open.

NOTE: (1) From June 15 through June 25, the waters of the Anita Bay THA west of 132°26.19' W long, are closed to the harvest of salmon.

(2) From June 26 through July 1, the waters of Anita Bay THA west of 132°26.98' W long, are closed to the harvest of salmon.

(3) From July 2 through July 10, the waters of Anita Bay THA west of 132°28.00' W long, are closed to the harvest of salmon.

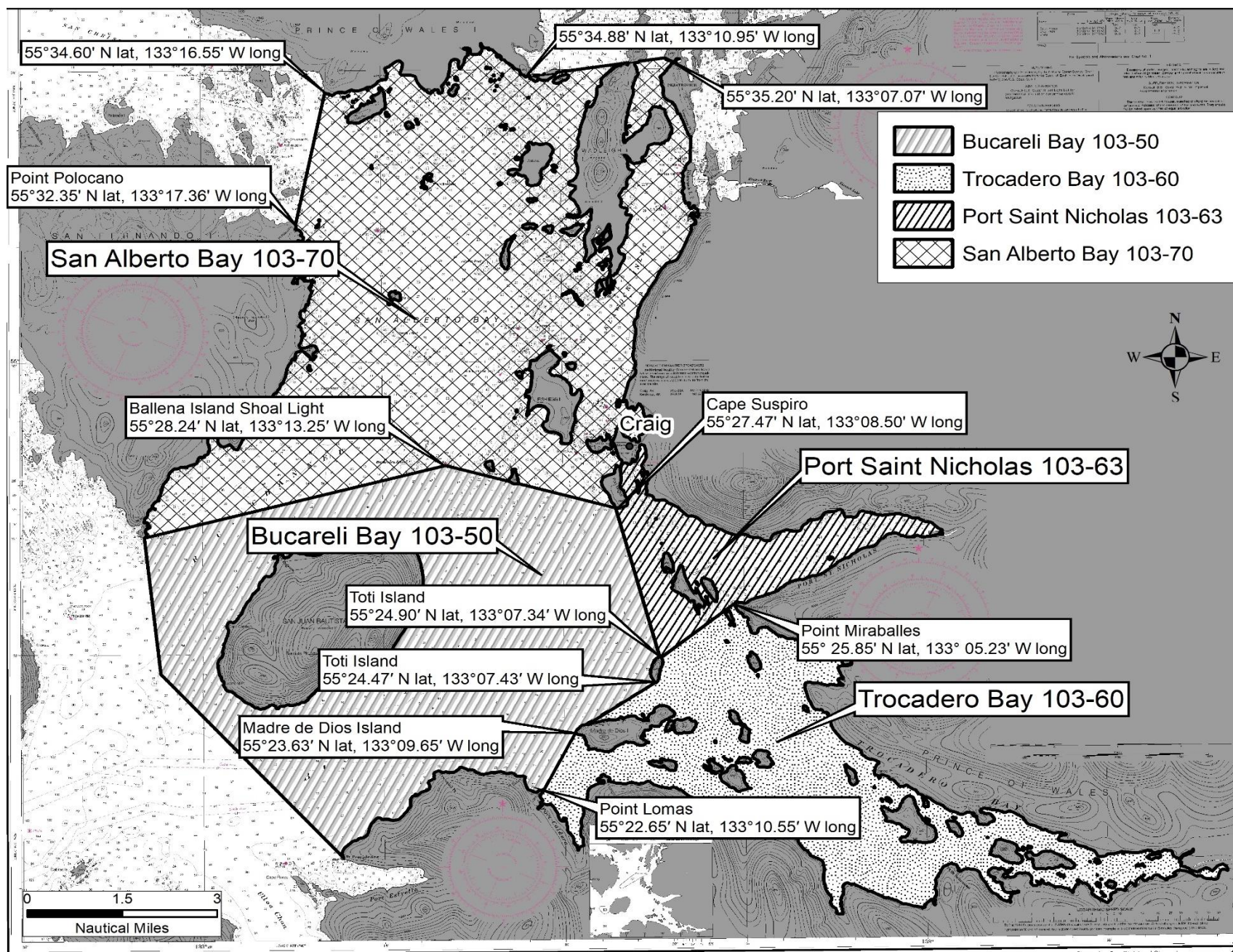


Figure 6.—Craig spring troll areas.

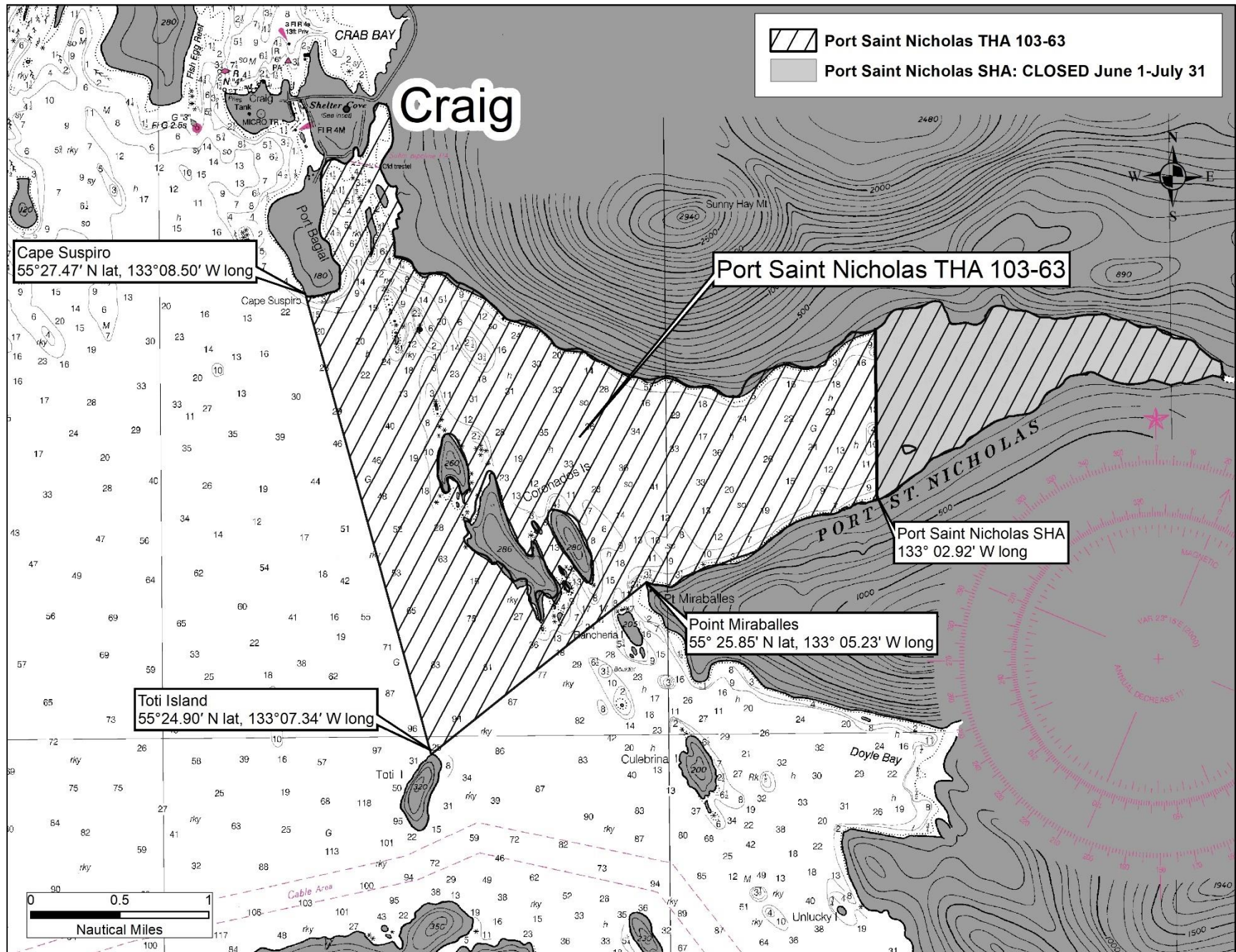


Figure 7.—Port Saint Nicholas Terminal Harvest Area.

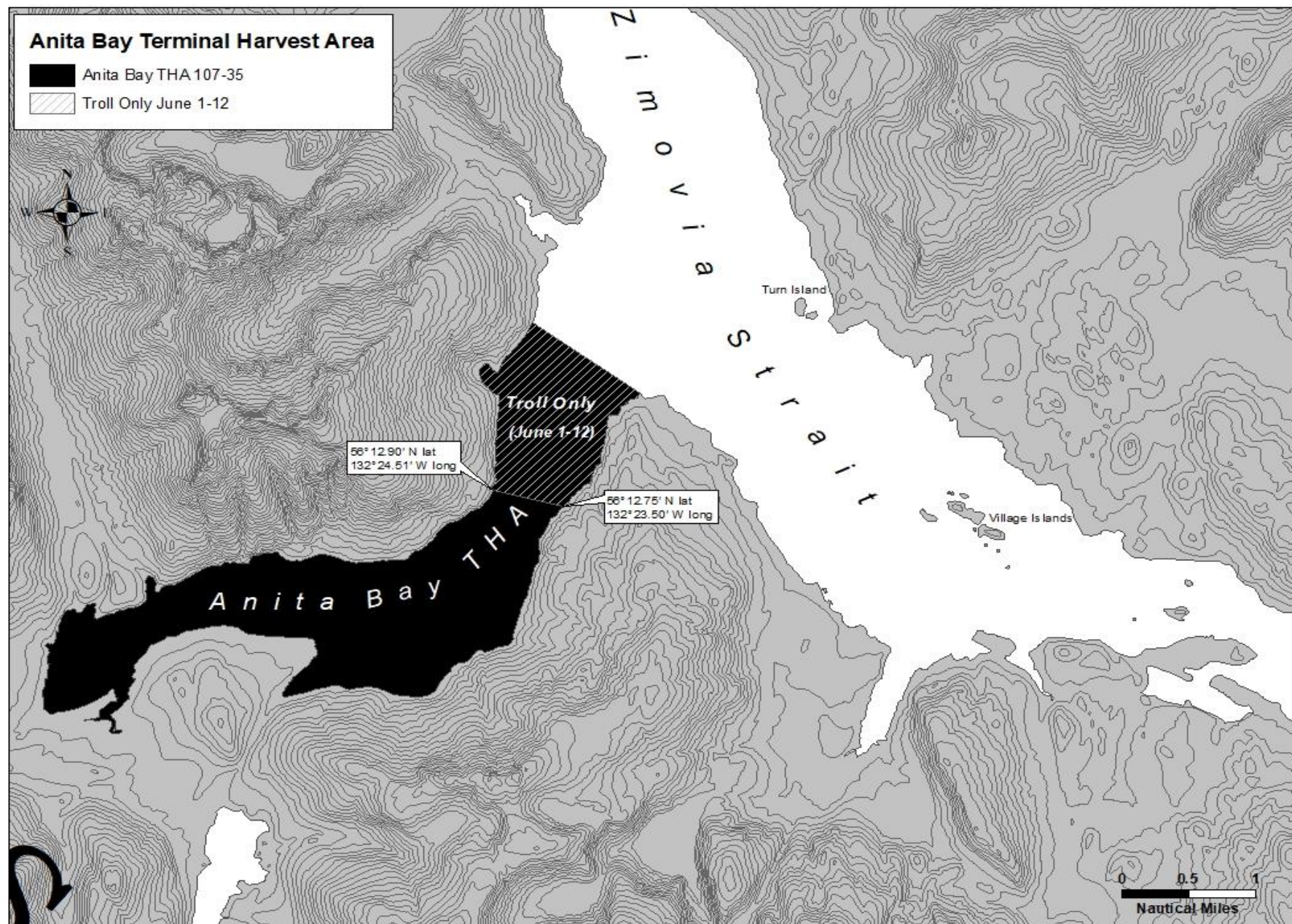


Figure 8.—Anita Bay Terminal Harvest Area.

CHATHAM STRAIT AND FREDERICK SOUND AREAS

Gunnuk Creek Terminal Harvest Area (fishery area 109-40) Modified Area: In the waters of Keku Strait enclosed by a line from a point about one-third mile northwest of Kake at 56°58.95' N lat, 133°57.42' W long to the southernmost tip of the southern Mosquito Island at 56°58.22' N lat, 133°58.84' W long, to the northwest tip of Hamilton Island at 56°56.65' N lat, 133°55.45' W long, to Wooten's Dock at 56°57.55' N lat, 133°54.70' W long from 12:01 a.m., June 1, through 11:59 p.m., June 30, unless closed by emergency order (Figure 9).

Southeast Cove Terminal Harvest Area (fishery area 109-41): In the waters of Keku Strait enclosed by a line from a rocky point on the northern end of Kuiu Island located on the east side of Southeast Cove at 56°52.95' N lat, 134°01.33' W long, to the northwest corner of Hound Island at 56°53.12' N lat, 133°56.77' W long, then northwest connecting points along the northern shore of Keku Islands at 56°53.98' N lat, 133°57.58' W long, to 56°54.90' N lat, 133°59.53' W long, to 56°55.93' N lat, 134°00.97' W long, to 56°55.95' N lat, 134°02.15' W long, to 56°55.22' N lat, 134°02.53' W long, to 56°56.37' N lat, 134°06.62' W long, then to the northwest corner of Payne Island at 56°57.45' N lat, 134°08.75' W long, then south to a point on Kuiu Island at 56°55.08' N lat, 134°09.25' W long (Figures 9 and 10).

Keku Strait Hatchery Chum Salmon Area (fishery area 109-42) Modified Area: In the waters of Districts 9 and 10 enclosed by a line extending from Cornwallis Point Light at 56°55.92' N lat, 134°16.41' W long to a point approximately 1.0 nmi north of Cornwallis Point Light at 56°56.80' N lat, 134°16.41' W long, to West Pinta Rocks Light at 57°05.17' N lat, 134°00.72' W long, to Cape Bendel at 57°04.27' N lat, 134°00.72' W long. Waters of the Southeast Cove THA and the Gunnuk Creek SHA are excluded (Figure 9).

Thomas Bay Terminal Harvest Area (fishery area 110-12) Modified Area: In the waters of Thomas Bay northeast of a line from Point Vandeput at 57°00.94' N lat, 133°00.02' W long, to Wood Point at 56°59.55' N lat, 132°56.96' W long, northwest of a line from a point on the mainland shoreline at 56°59.57' N lat, 132°54.02' W long, to Ruth Island at 57°00.42' N lat, 132°51.07' W long, north of a line from a point on the southeastern shoreline of Ruth Island at 56°58.70' N lat, 132°49.13' W long, to the mainland shoreline at 56°58.70' N lat, 132°47.32' W long, west of a line from the mainland shoreline at 56°59.38' N lat, 132°47.60' W long, to the southern tip of Spray Island at 56°59.80' N lat, 132°47.73' W long, to the northern tip of Spray Island at 57°00.07' N lat, 132°47.80' W long, to the mainland shoreline at 57°00.56' N lat, 132°47.57' W long, and south of a line from 57°03.00' N lat, 132°49.62' W long, to 57°03.00' N lat, 132°52.03' W long. Troll gear may be operated in portions of the THA during those periods the purse seine fishery is closed from 12:01 a.m., June 18, through 11:59 p.m., August 5 (Figures 9 and 11).

The waters of Spurt Cove are closed northwest of a line from 57°01.98' N lat, 132°52.49' W long, to 57°02.08' N lat, 132°52.37' W long.

Waters northeast of a line from the northern tip of Spray Island at 57°00.07' N lat, 132°47.80' W long, to a point on the northern boundary line approximately 0.50 nmi from the mainland shoreline at 57°03.00' N lat, 132°50.55' W long, are closed Saturdays and Sundays of each week from 12:01 a.m., Saturday to 11:59 p.m., Sunday.

Hidden Falls Terminal Harvest Area (fishery area 112-22) Modified area: In the waters of Chatham Strait, only those waters of Section 12-A **within approximately 1.0 nmi of the Baranof Island shoreline** south of the latitude of South Point at 57°16.28' N lat, 134°51.81' W long, north of 57°06.76' N lat, and west of a line from a point offshore at 57°16.28' N lat, 134°49.94' W long to a point offshore at 57°06.76' N lat, 134°45.37' W long. Beginning June 25, the THA will expand to include waters of Chatham Strait within approximately 2.0 nmi of the Baranof Island shoreline and within the boundaries of a line from South Point at 57°16.28' N lat, 134°51.81' W long to a point offshore at 57°16.28' N lat, 134°48.00' W long, then running south to a point offshore at 57°06.76' N lat, 134°43.00' W long, then due west to a point on the Baranof Island shoreline at 57°06.76' N lat, 134°47.53' W long. Troll gear may be operated in the Hidden Falls THA from 12:01 a.m.,

June 1, through 11:59 p.m., September 20, as permitted under 5 AAC 33.374, unless closed by emergency order.

The waters of the Hidden Falls THA that are north and west of a line from ADF&G regulatory markers located at 57°13.17' N lat, 134°51.86' W long to 57°13.08' N lat, 134°52.02' W long and north of a line from 57°13.05' N lat, 134°52.24' W long to 57°13.06' N lat, 134°52.20' W long, **are closed to commercial salmon fishing** (5 AAC 33.374[g]).

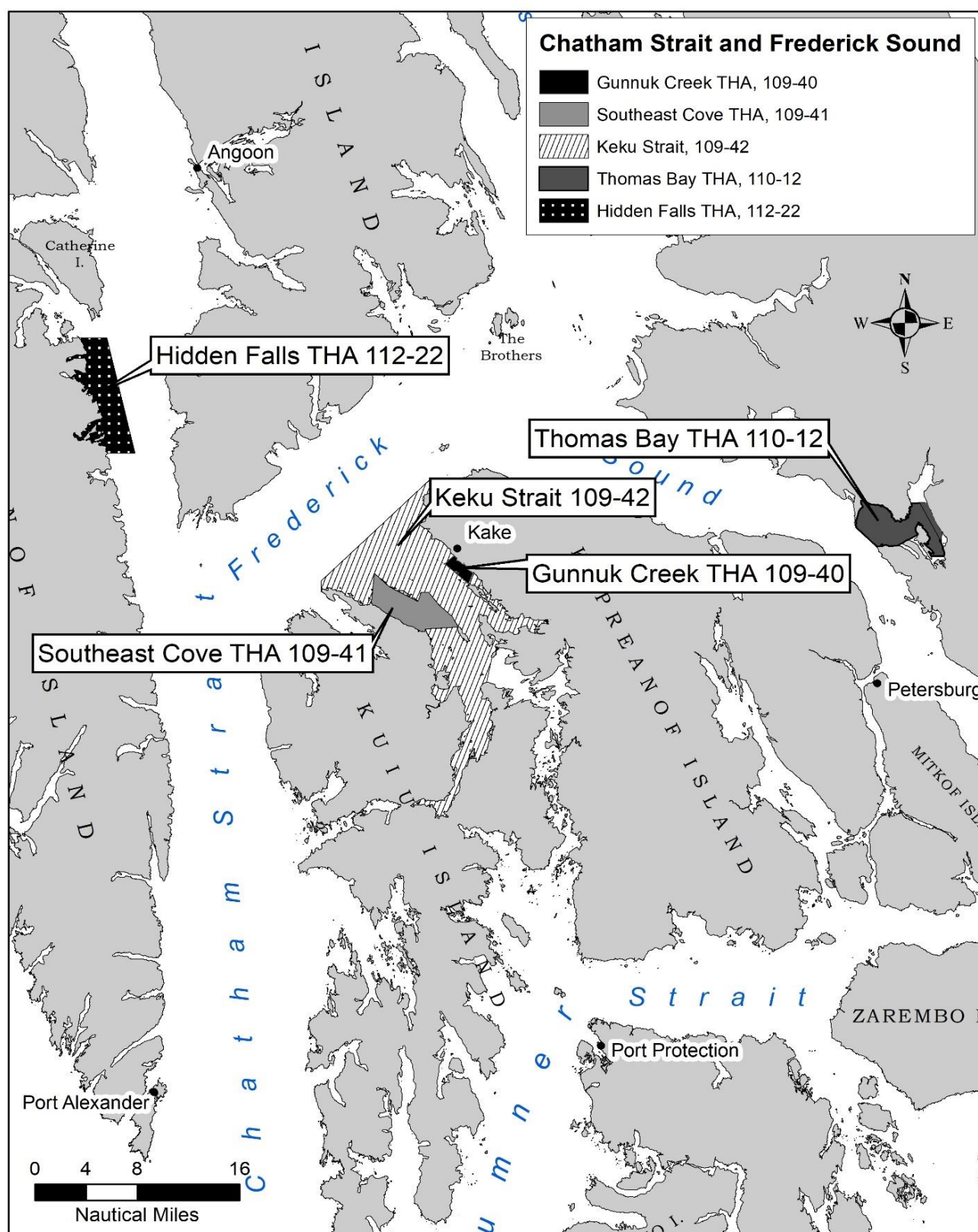


Figure 9.—Chatham Strait and Frederick Sound spring troll areas.

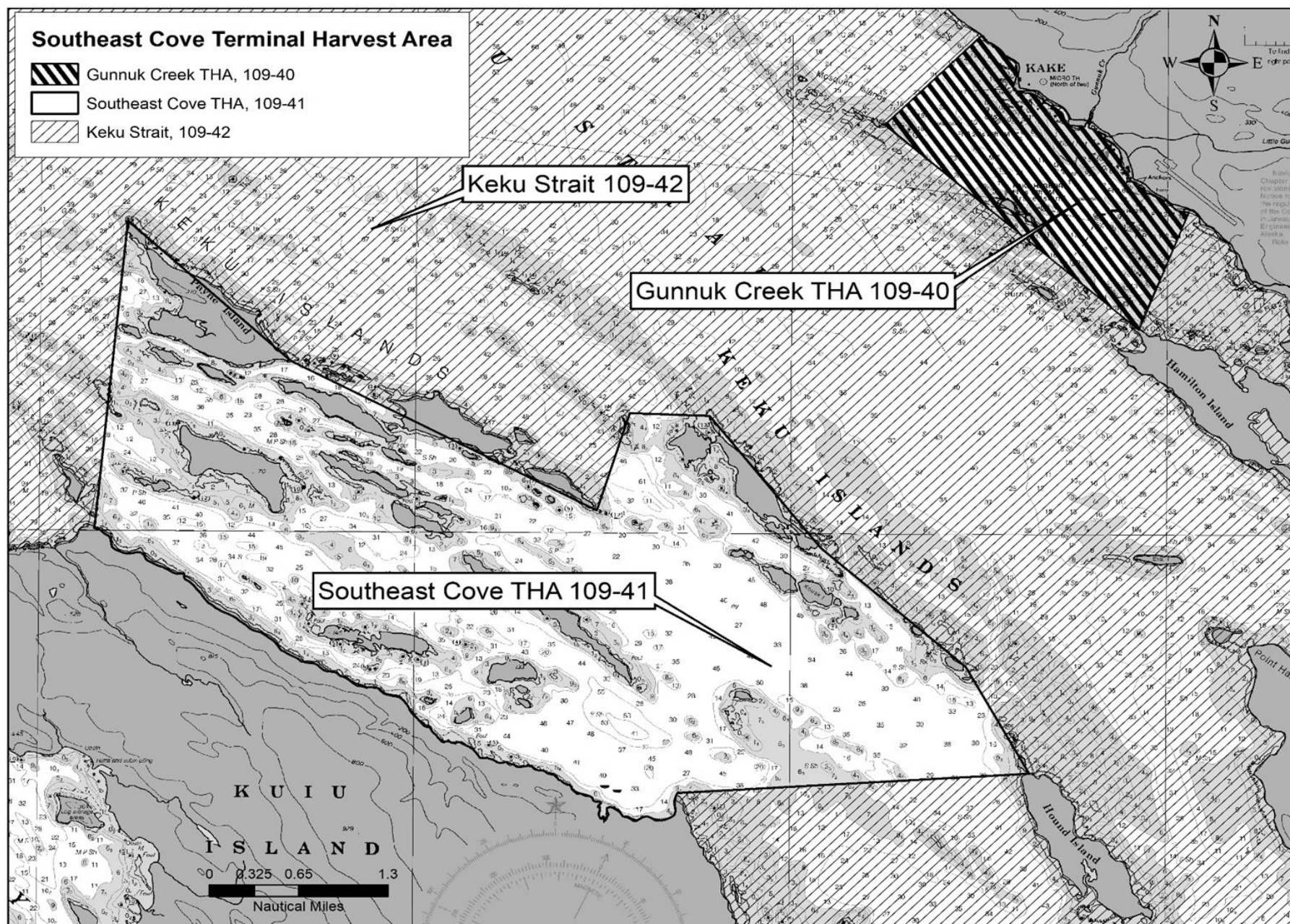


Figure 10.—Southeast Cove Terminal Harvest Area.

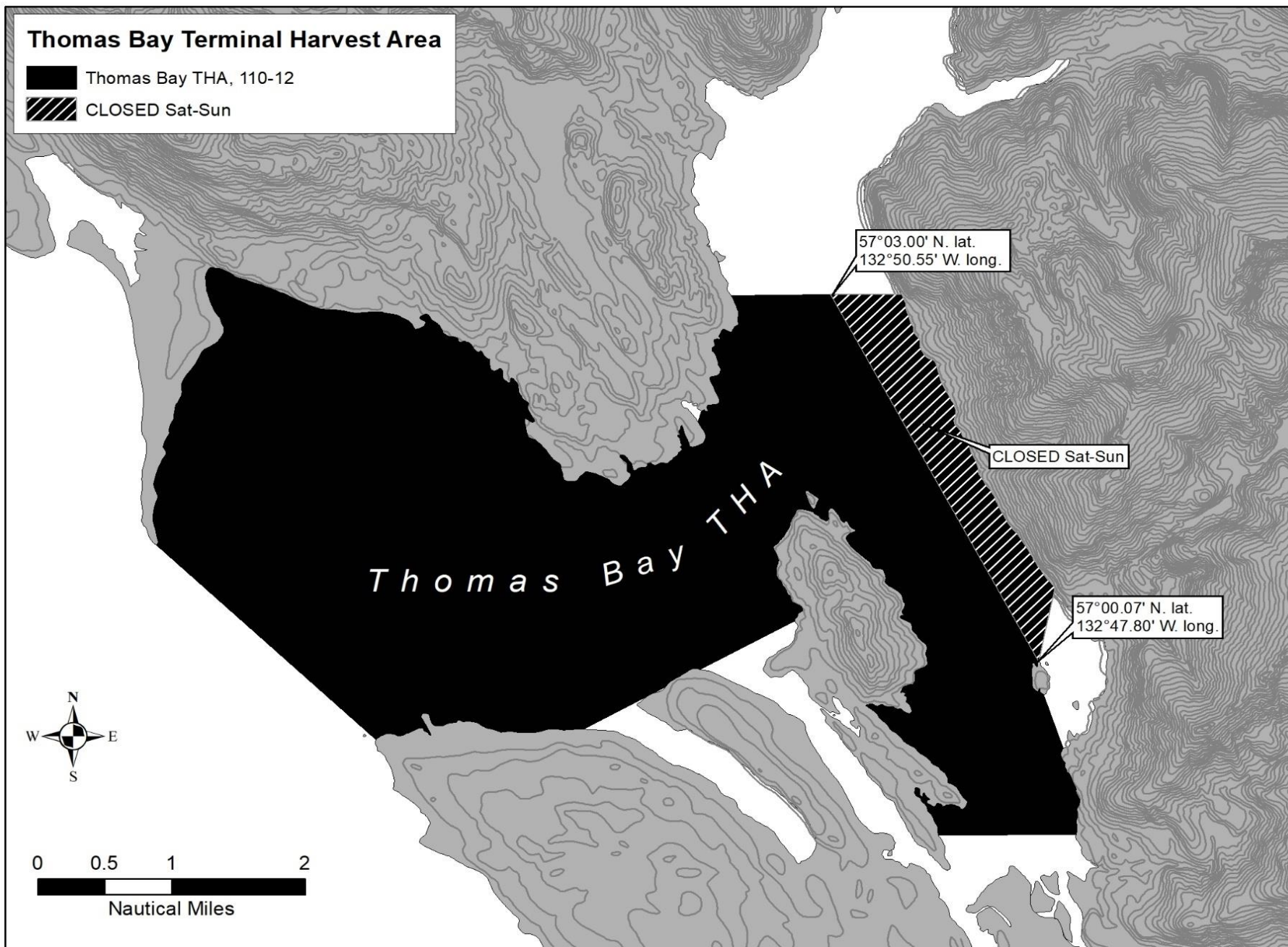


Figure 11.—Thomas Bay Terminal Harvest Area.

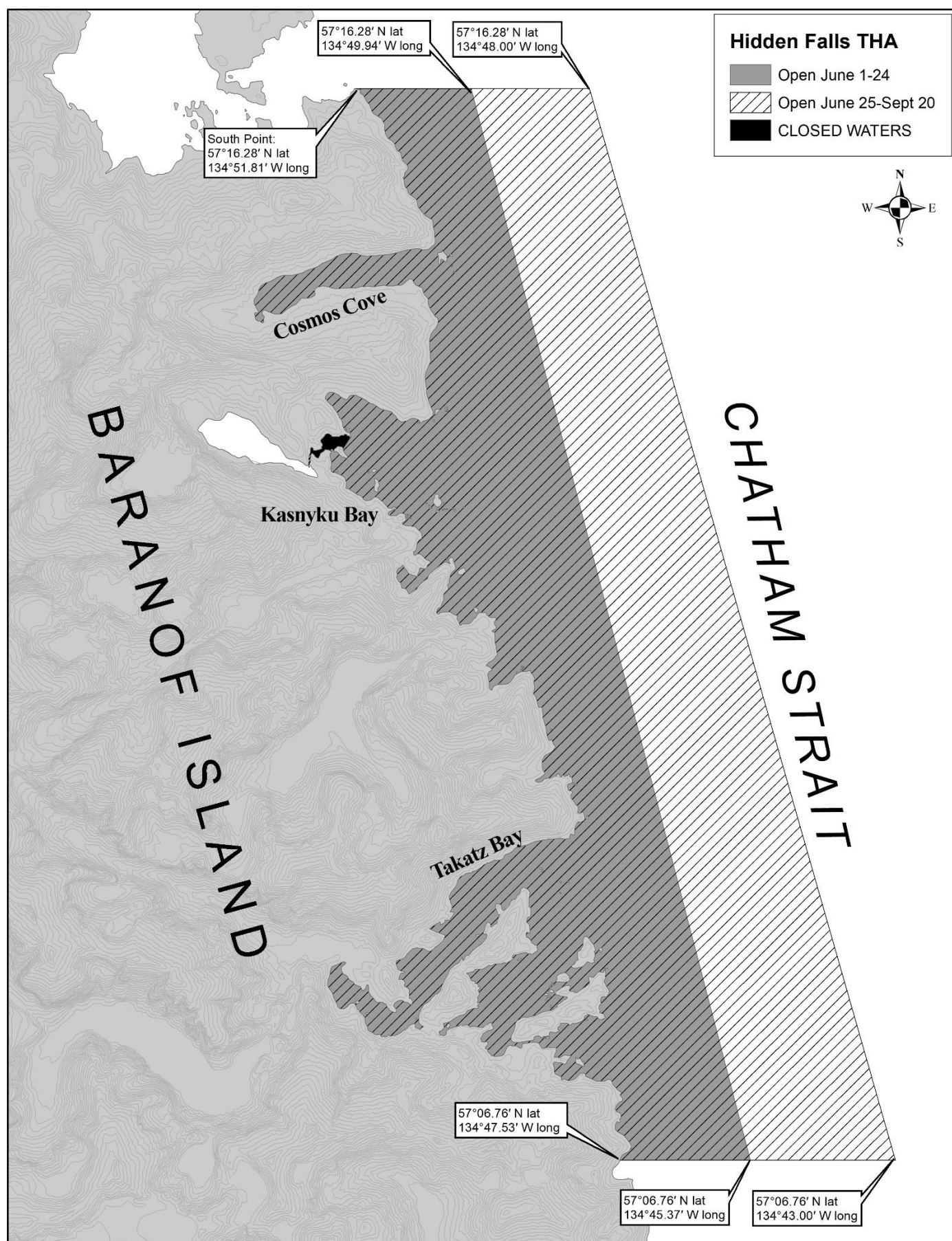


Figure 12.—Hidden Falls Terminal Harvest Area.

SITKA AREAS

Western Channel (fishery area 113-01) Modified Area: In the waters of Sitka Sound northeast of a line from Kulichkof Rock at 56°59.48' N lat, 135°26.65' W long, to Vitskari Island Light at 57°00.00' N lat, 135°32.71' W long to a point on Kruzof Island at 57°03.42' N lat, 135°36.00' W long, southwest of a line from a point on Kruzof Island at 57°05.00' N lat, 135°35.00' W long, to 57°01.50' N lat, 135°24.25' W long (the intersection of a line from a point on Kruzof Island at 57°05.00' N lat, 135°35.00' W long, through The Eckholms Light, with a line from the southernmost tip of Makhnati Island to Kulichkof Rock), to Kulichkof Rock at 56°59.48' N lat, 135°26.65' W long (Figure 13).

Redoubt Bay (fishery area 113-30) Modified Area: In the waters of Sitka Sound south of a line from the westernmost tip of Cape Burunof at 56°59.04' N lat, 135°23.21' W long to Kulichkof Rock at 56°59.48' N lat, 135°26.65' W long and east of a line from Kulichkof Rock at 56°59.48' N lat, 135°26.65' W long, to the northwesternmost point on Peisar Island at 56°53.72' N lat, 135°26.85' W long, and from the southernmost point on Peisar Island at 56°52.73' N lat, 135°25.93' W long, to the southernmost point on Viesokoi Rock at 56°52.15' N lat, 135°25.00' W long, to a point on Baranof Island at 56°51.40' N lat, 135°23.49' W long (Figure 13).

Goddard Area (fishery area 113-31) Modified Area: In the waters enclosed by a line from Baranof Island at 56°51.40' N lat, 135°23.49' W long, to the southernmost point on Viesokoi Rock at 56°52.15' N lat, 135°25.00' W long, to the southernmost point on Peisar Island at 56°52.73' N lat, 135°25.93' W long, and from a point on Peisar Island at 56°53.00' N lat, 135°26.44' W long to Middle Rock at 56°50.91' N lat, 135°27.19' W long, to a point on Maid Island at 56°50.25' N lat, 135°27.74' W long, to the northwesternmost tip of Legma Island at 56°50.07' N lat, 135°27.19' W long, and from a point on the eastern shore of Legma Island at 56°49.20' N lat, 135°26.93' W long to the northern tip of Pishak Island at 56°48.68' N lat, 135°26.21' W long, to a point on Elovoi Island at 56°48.91' N lat, 135°24.89' W long, and north and west of a line from Elovoi Island at 56°49.44' N lat, 135°23.15' W long, to a point on Baranof Island at 56°49.58' N lat, 135°22.60' W long (Figure 13).

West Crawfish Inlet (fishery area 113-32) Modified Area: In the waters of West Crawfish Inlet, First Narrows, and Second Narrows northeast of a line from 56°46.60' N lat, 135°18.53' W long, to 56°43.30' N lat, 135°17.80' W long, excluding all waters of the Crawfish Inlet THA (Figures 13 and 14).

Crawfish Inlet Terminal and Special Harvest Areas (fishery area 113-33) Modified Area: In the waters east of a line from 56°44.16' N lat, 135°15.80' W long, to 56°43.30' N lat, 135°17.80' W long, to 56°41.93' N lat, 135°17.54' W long, to 56°41.14' N lat, 135°13.80' W long, including the waters of Jamboree Bay and Cedar Pass south of 56°47.14' N lat, and Crawfish Inlet west of 135°11.05' W long from 12:01 a.m., June 1, through 11:59 p.m., September 20, unless closed by emergency order. Waters of the SHA east of 135°11.05' W long, are open concurrent to the THA (Figures 13 and 14).

Silver Bay Terminal Harvest Area (fishery area 113-35) Modified Area: In the waters of Silver Bay east of a line from Entry Point Light at 57°01.96' N lat, 135°15.01' W long, to Silver Point at 57°00.80' N lat, 135°18.09' W long from 12:01 a.m., June 1, through 11:59 p.m., July 30, unless closed by emergency order. The waters of Bear Cove are closed east of a line from a point on the south shore at 57°00.77' N lat, 135°09.08' W long, to the north shore at 57°00.94' N lat, 135°09.23' W long (Figures 13 and 15).

Sitka Sound (fishery area 113-41) Modified Area: In the waters of Sitka Sound, Krestof Sound, and Neva Strait south of 57°15.00' N lat, and north and east of a line from the westernmost tip of Cape Burunof at 56°59.04' N lat, 135°23.21' W long, to Kulichkof Rock at 56°59.48' N lat, 135°26.65' W long, to 57°01.50' N lat, 135°24.25' W long (the intersection of a line from a point on Kruzof Island at 57°05.00' N lat, 135°35.00' W long, through The Eckholms Light, with a line from the southernmost tip of Makhnati Island to Kulichkof Rock), to a point on Kruzof Island at 57°05.00' N lat, 135°35.00' W long, including the waters of Nakwasina Passage, Nakwasina Sound, and Katlian Bay (Figure 13).

The waters of the Silver Bay and Deep Inlet THAs, as described in this section, are included in the Sitka Sound Area through May 31. These areas will open as the Silver Bay and Deep Inlet THAs beginning June 1.

Deep Inlet Terminal Harvest Area (fishery area 113-38) Modified Area: In the waters of Deep Inlet, Aleutkina Bay, and contiguous waters south of a line from a point west of Pirates Cove at 56°59.35' N lat, 135°22.63' W long, to the westernmost tip of Long Island at 56°59.98' N lat, 135°21.93' W long, to the easternmost tip of Long Island at 56°59.95' N lat, 135°20.37' W long, to the westernmost tip of Emgeten Island at 57°00.08' N lat, 135°20.01' W long, to the westernmost tip of Error Island at 57°00.54' N lat, 135°19.50' W long, to the westernmost tip of Berry Island at 57°00.32' N lat, 135°18.68' W long, to the southernmost tip of Berry Island at 57°00.28' N lat, 135°18.52' W long, to the westernmost tip of the southernmost island in the Kutchuma Island group at 57°00.14' N lat, 135°18.27' W long, to the easternmost tip of the southernmost island in the Kutchuma Island group at 57°00.06' N lat, 135°17.95' W long, to the westernmost tip of an unnamed island at 57°00.29' N lat, 135°17.66' W long, to a point on the southern side of the unnamed island at 57°00.07' N lat, 135°16.80' W long, and then to a point on the Baranof Island shore at 56°59.93' N lat, 135°16.53' W long from 12:01 a.m., June 1, through 11:59 p.m., September 20, unless closed by emergency order. Waters of Sandy Cove will be closed (Figures 13 and 16).

From June 1 through June 17, the waters of the Deep Inlet THA west of 135°20.75' W long, are open continuously to troll gear as part of the THA, with waters east of 135°20.75' W long, open to troll gear when net fisheries are closed. On June 18, all waters of the Deep Inlet THA will follow the rotational schedule with troll openings occurring on Saturdays and during those periods when net gear is closed.

Salisbury Sound (fishery area 113-62) Modified Area: In the waters of Peril Strait south of the latitude of Pogibshi Point at 57°30.50' N lat, and in waters of Salisbury Sound east of 135°46.00' W long, including Sukoi Inlet and waters of Neva Strait north of 57°15.00' N lat (Figure 13).

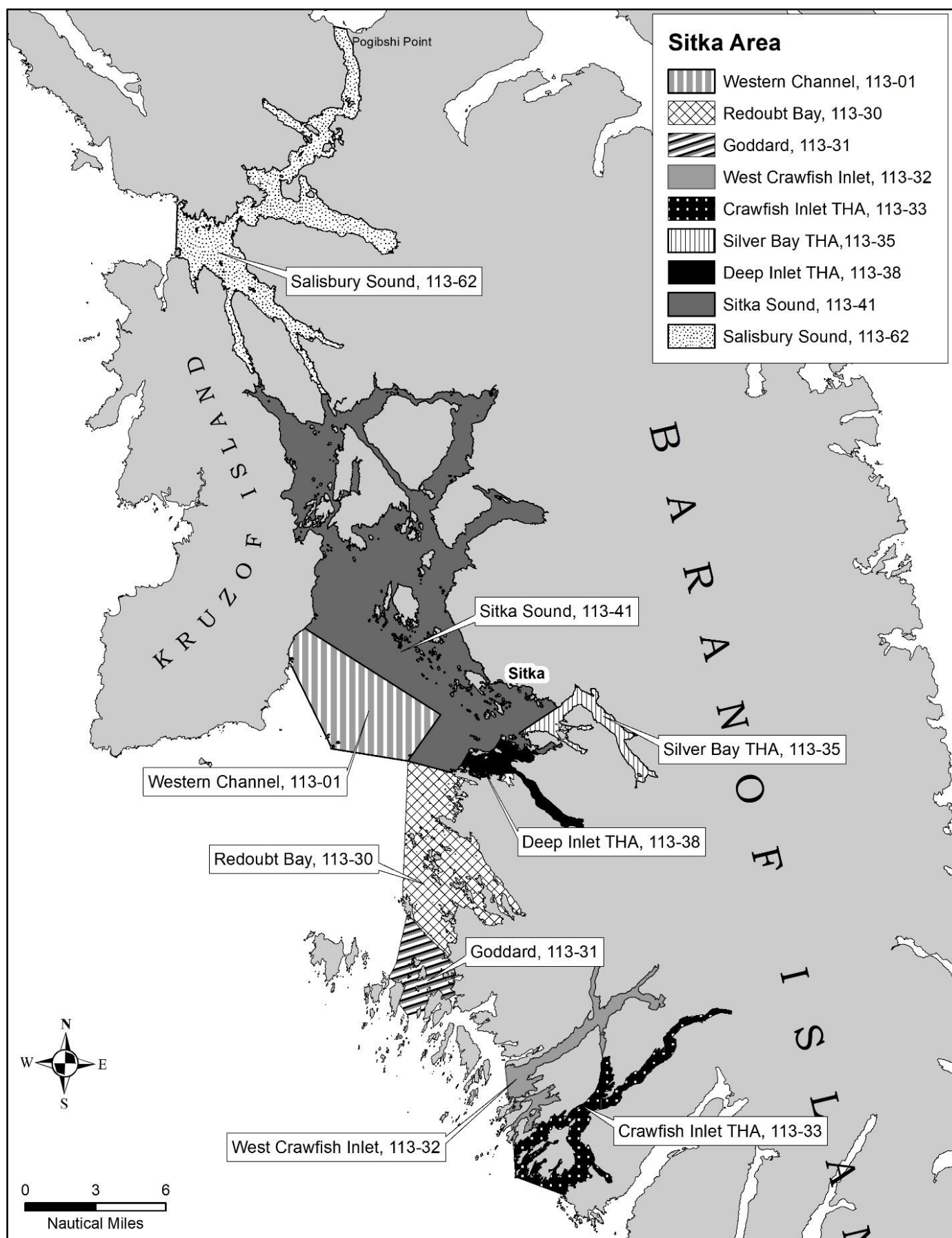


Figure 13.—Sitka spring troll areas.

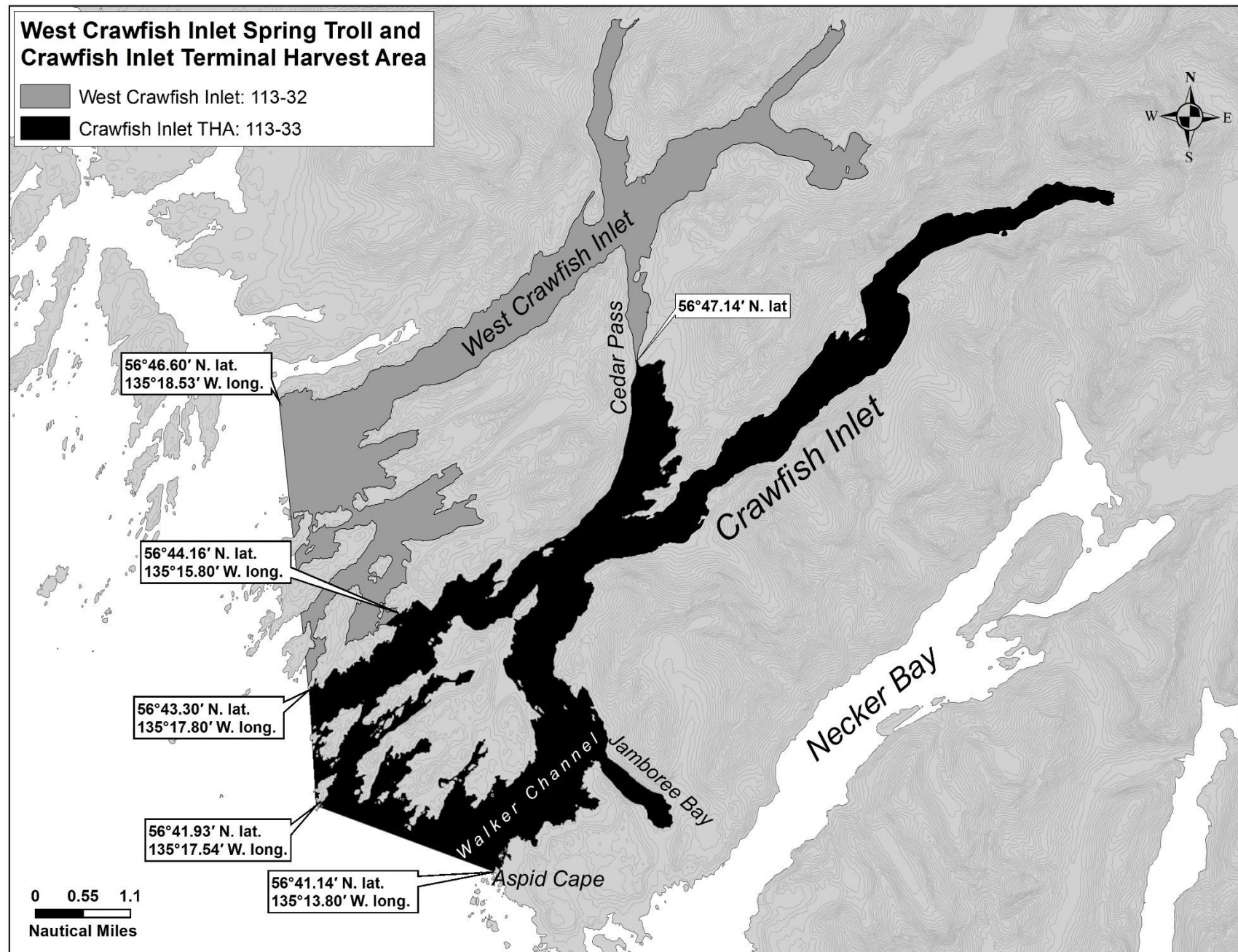


Figure 14.—West Crawfish Inlet spring troll, Crawfish Inlet Terminal Harvest Areas.

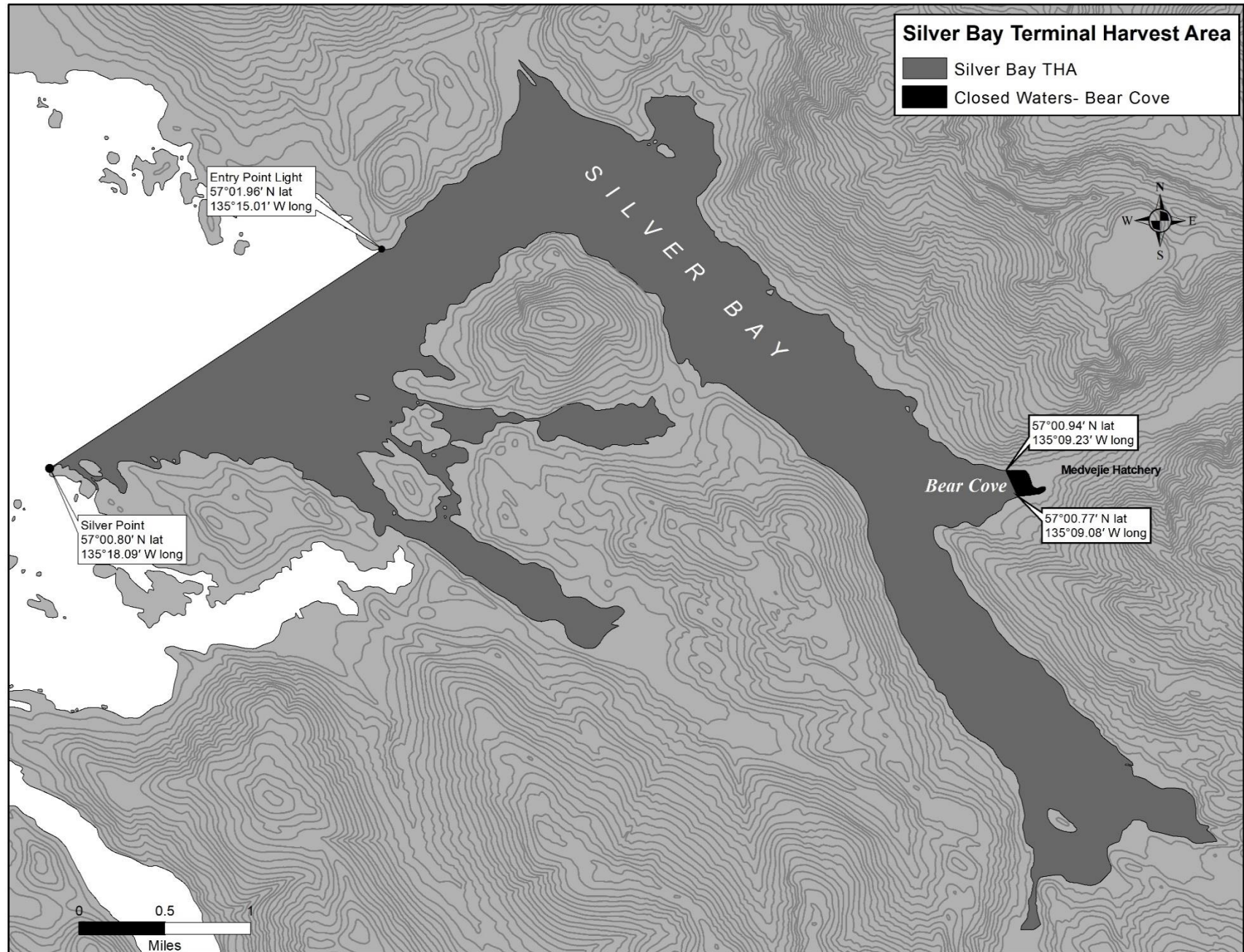


Figure 15.-Silver Bay Terminal Harvest Area.

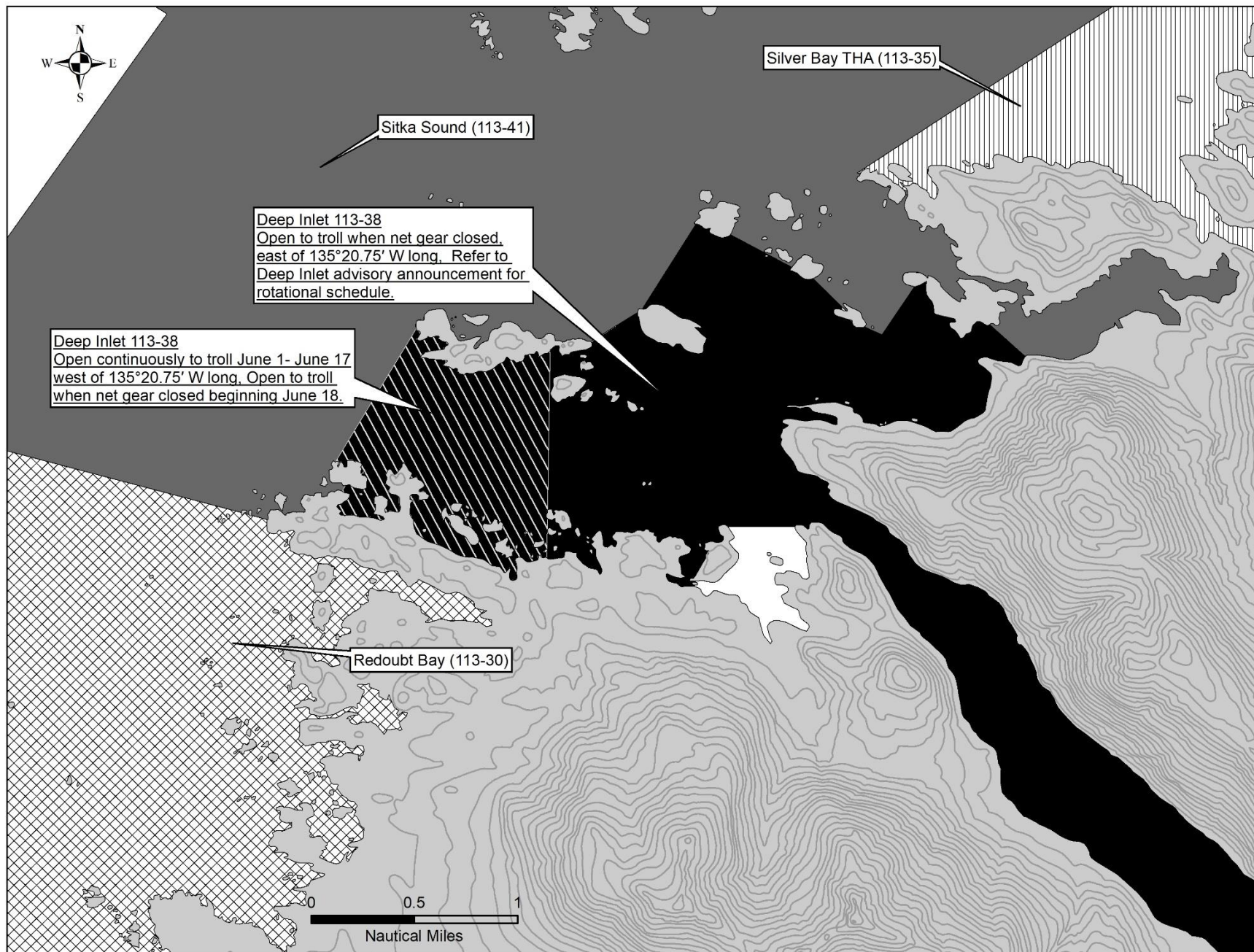


Figure 16.—Deep Inlet Terminal Harvest Area.

NORTH CHATHAM STRAIT AND ICY STRAIT HATCHERY CHUM SALMON AREAS (FIGURE 17)

Northern Chatham Strait (fishery area 112-16): In the waters enclosed by a line from 58°11.29' N lat, 134°53.27' W long, to 58°10.40' N lat, 135°02.63' W long, to 58°07.78' N lat, 135°00.78' W long, to 58°05.81' N lat, 134°47.09' W long.

Cross Sound (fishery area 114-21) Modified Area: In the waters of Section 14-A west of a line from the southernmost tip of Point Dundas at 58°18.93' N lat, 136°16.79' W long, to the westernmost tip of Lemesurier Island at 58°16.74' N lat, 136°09.45' W long, to the prominent point on the northeastern side of the Inian Peninsula at 58°13.43' N lat, 136°17.00' W long, east of the line of longitude extending south from the southernmost tip of Taylor Island at 58°16.98' N lat, 136°29.02' W long, to the point on that line that intersects at 58°10.00' N lat, north of a line that continues east to Althorp Rock Light at 58°09.98' N lat, 136°21.56' W long, and west of the line continuing north to the light at the entrance to Elfin Cove at 58°11.81' N lat, 136°21.07' W long.

South Passage (fishery area 114-23) Modified Area: In the waters of Icy Strait south and east of a line extending from the prominent point on the northeastern side of Inian Peninsula at 58°13.43' N lat, 136°17.00' W long, to the westernmost tip of Lemesurier Island at 58°16.74' N lat, 136°09.45' W long, from the northernmost tip of Lemesurier Island at 58°19.15' N lat, 136°02.45' W long, to Point Gustavus at 58°22.91' N lat, 135°55.19' W long, and west of a line from Point Adolphus Light at 58°17.16' N lat, 135°46.98' W long, to a point approximately 1.0 nmi north of Point Adolphus at 58°18.04' N lat, 135°46.98' W long, north of a line continuing southeast to 58°14.65' N lat, 135°32.20' W long, and west of the line extending north from that point through Noon Point on the 135°32.20' W long, including the waters of Icy Passage.

Homeshore (fishery area 114-25): In the waters of Icy Strait east of the longitude of Noon Point at 135°32.20' W long, and west of 135°09.60' W long, and north of a line from 58°09.58' N lat, 135°09.60' W long, to the northern tip of the northernmost island of the Sisters Islands at 58°10.78' N lat, 135°15.48' W long, to 58°14.65' N lat, 135°32.20' W long.

Point Couverden (fishery area 114-26): In the waters enclosed by a line from 58°11.63' N lat, 135°09.60' W long, to 58°09.58' N lat, 135°09.60' W long, to 58°07.78' N lat, 135°00.78' W long, to 58°10.00' N lat, 135°02.35' W long, to 58°10.00' N lat, 135°06.24' W long, to 58°11.63' N lat, 135°09.60' W long.

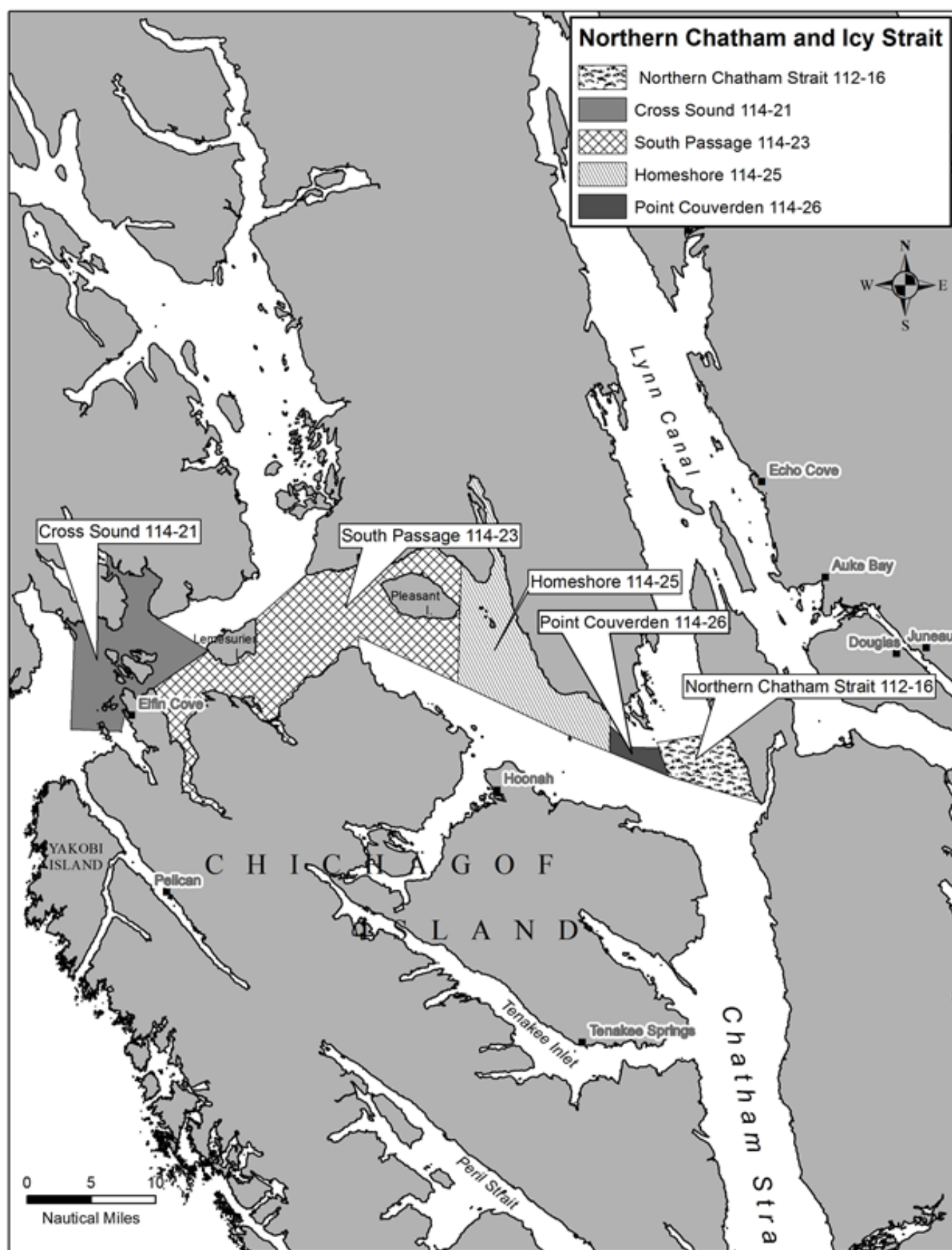


Figure 17.—North Chatham Strait and Icy Strait spring troll chum salmon areas.

YAKUTAT AREA

Yakutat Bay (Fishery Area 183-10): In the waters of Yakutat Bay east of a line from Point Manby at 59°41.66' N lat, 140°19.70' W long to Ocean Cape at 59°32.06' N lat, 139°51.46' W long (Figure 18).

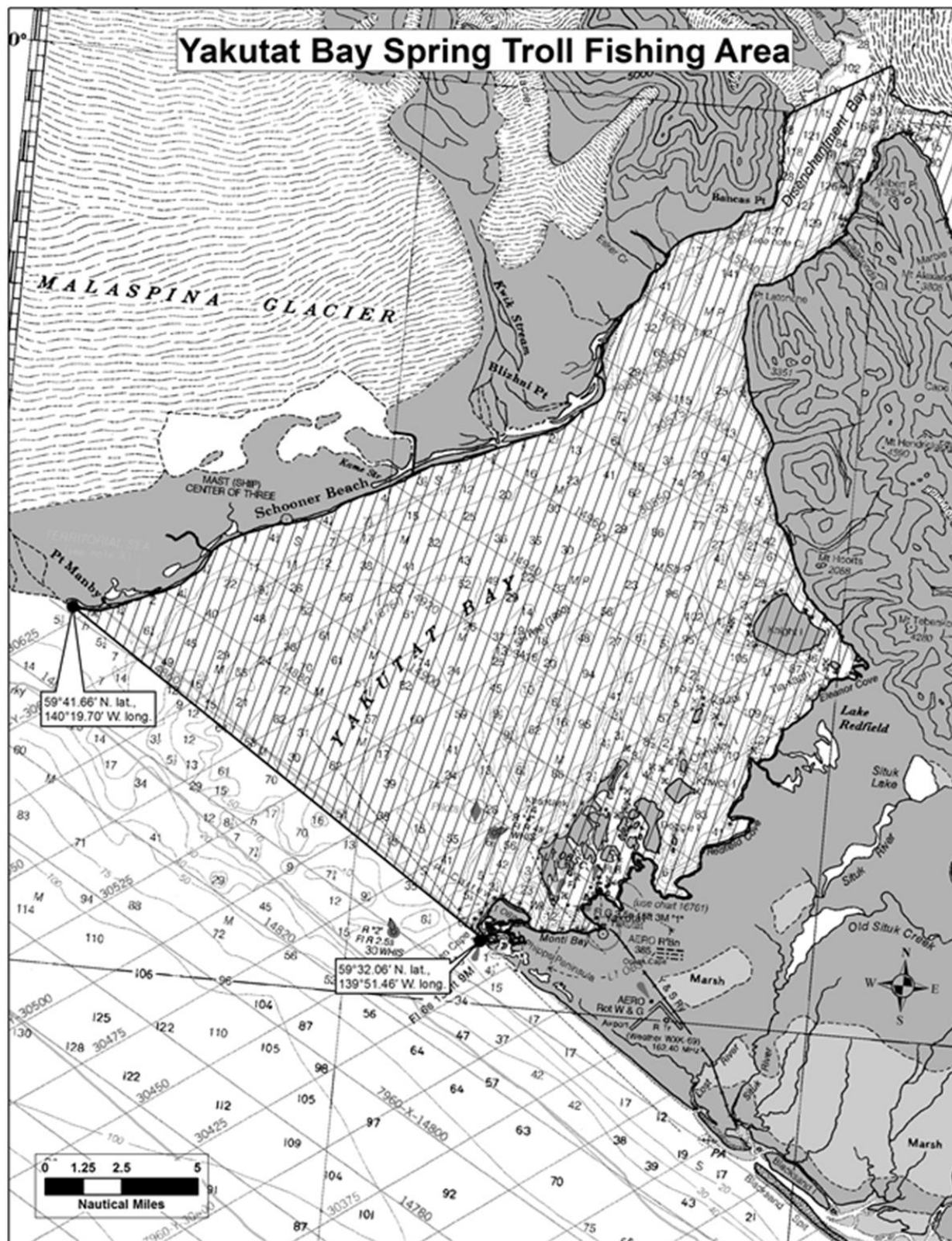


Figure 18.—Yakutat Bay spring troll area.

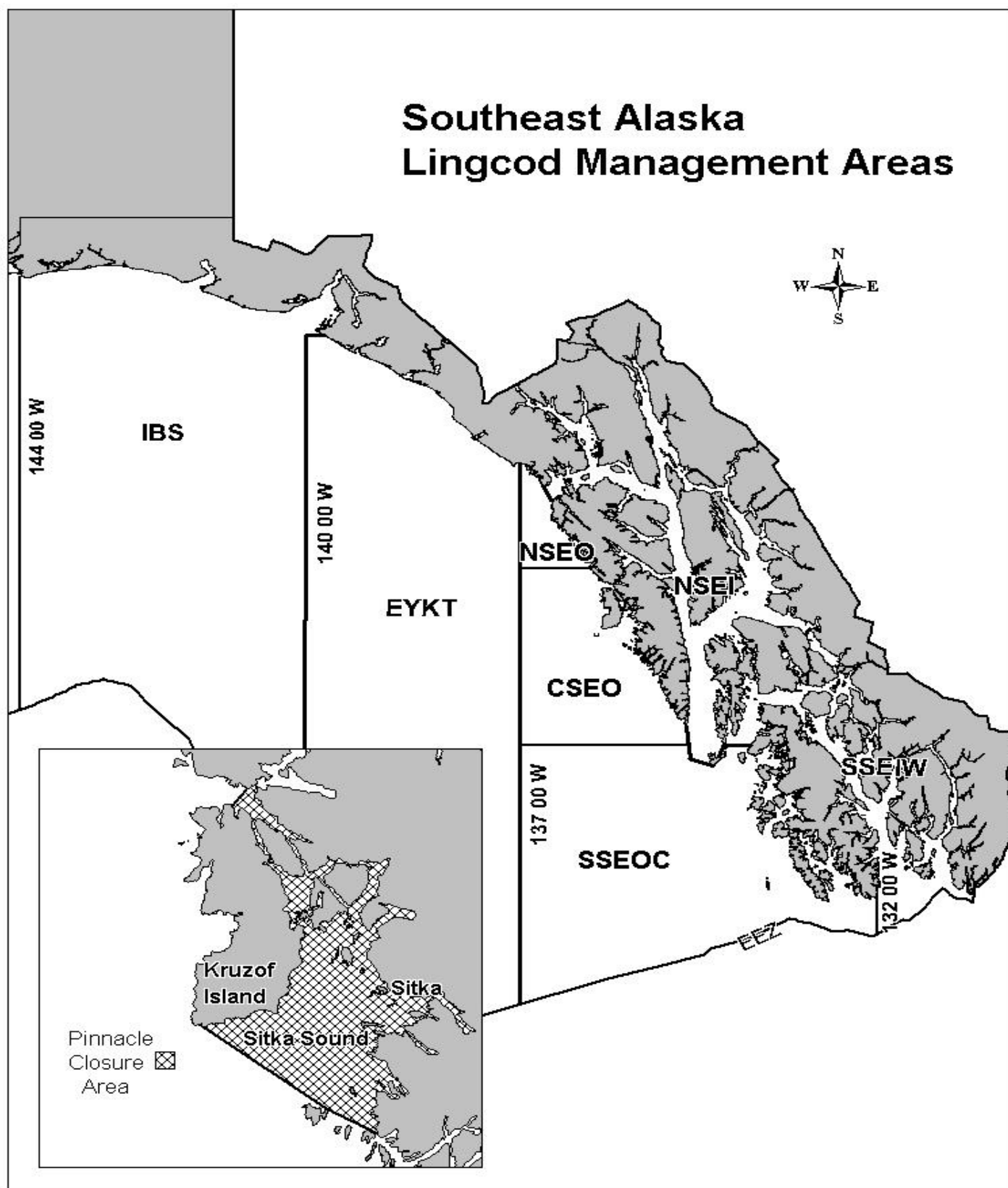


Figure 19.—Southeast Alaska lingcod management areas and restricted waters of Sitka Sound Special Use Area.

Note: See January 3, 2023 Groundfish Bycatch in the Salmon Troll Fishery Advisory Announcement for updated bycatch regulations and allowances.

FISHERY CONTACTS

The following are Division of Commercial Fisheries contacts regarding this management plan:

Grant Hagerman
Troll Management Biologist
304 Lake Street, #103
Sitka, Alaska 99835
(907) 747-6688

Mike Vaughn
Assistant Troll Management Biologist
304 Lake Street, #103
Sitka, Alaska 99835
(907) 747-6688

Troy Thynes
Regional Management Coordinator
P. O. Box 667
Petersburg, Alaska 99833
(907) 772-3801

Lowell Fair
Regional Supervisor
P. O. Box 240020
Douglas, Alaska 99824-0020
(907) 465-4250

Rhea Ehresmann
Groundfish Project Leader
304 Lake Street, #103
Sitka, Alaska 99835
(907) 747-6688

For updated information on the troll fishery, call the 24-hour information line in the Douglas (907) 465-TROLL (8765), Sitka (907) 747-8765, or Ketchikan (907) 225-6870.

SOUTHEAST ALASKA TROLL WEBSITE INFORMATION:

<http://www.adfg.alaska.gov/index.cfm?adfg=commercialbyareasoutheast.salmon>