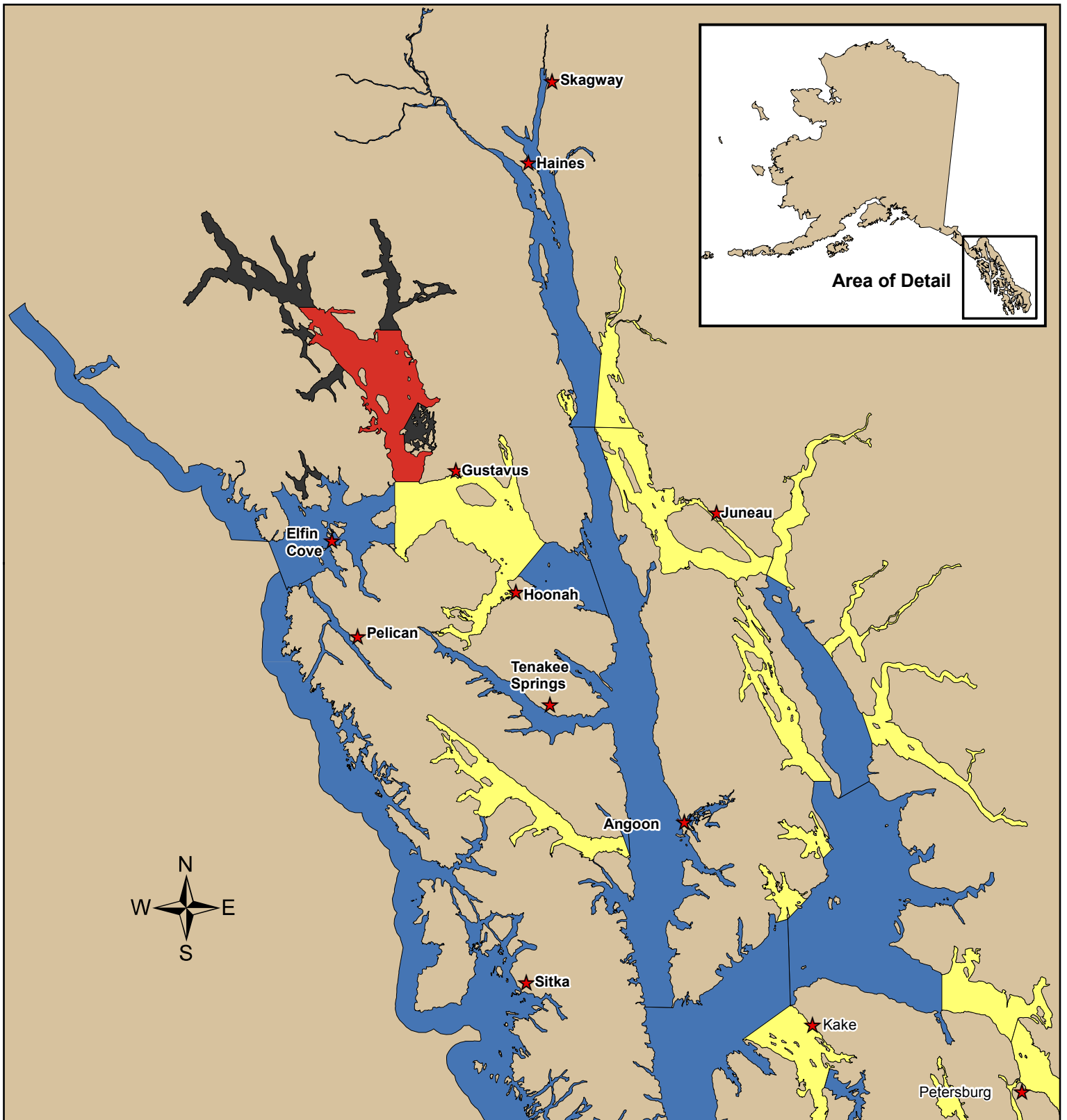
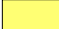





# Commercial Tanner Crab Management Core, Non Core and Closed Areas of Northern Registration Area A

Refer to 5AAC 35.113 for Legal Descriptions



-  Core Areas
-  Noncore Areas
-  Closed to Commercial Fishing
-  Core Area Open for Qualifying Fishermen's Lifetimes for Commercial Tanner Crab

Note: Please refer to Federal regulations regarding commercial fishing boundaries within the Glacier Bay National Park. For more information regarding current and legal Federal boundaries of Glacier Bay National Park, please call (907) 697-2230.