

# **Considering Spatial Management of Trawl Bycatch**

**Presentation to the Governor's Bycatch Review Task Force**

**Jim Martin, Executive Director, Alaska Charter Association - August 10, 2022**

# West Coast Groundfish Disaster Declaration

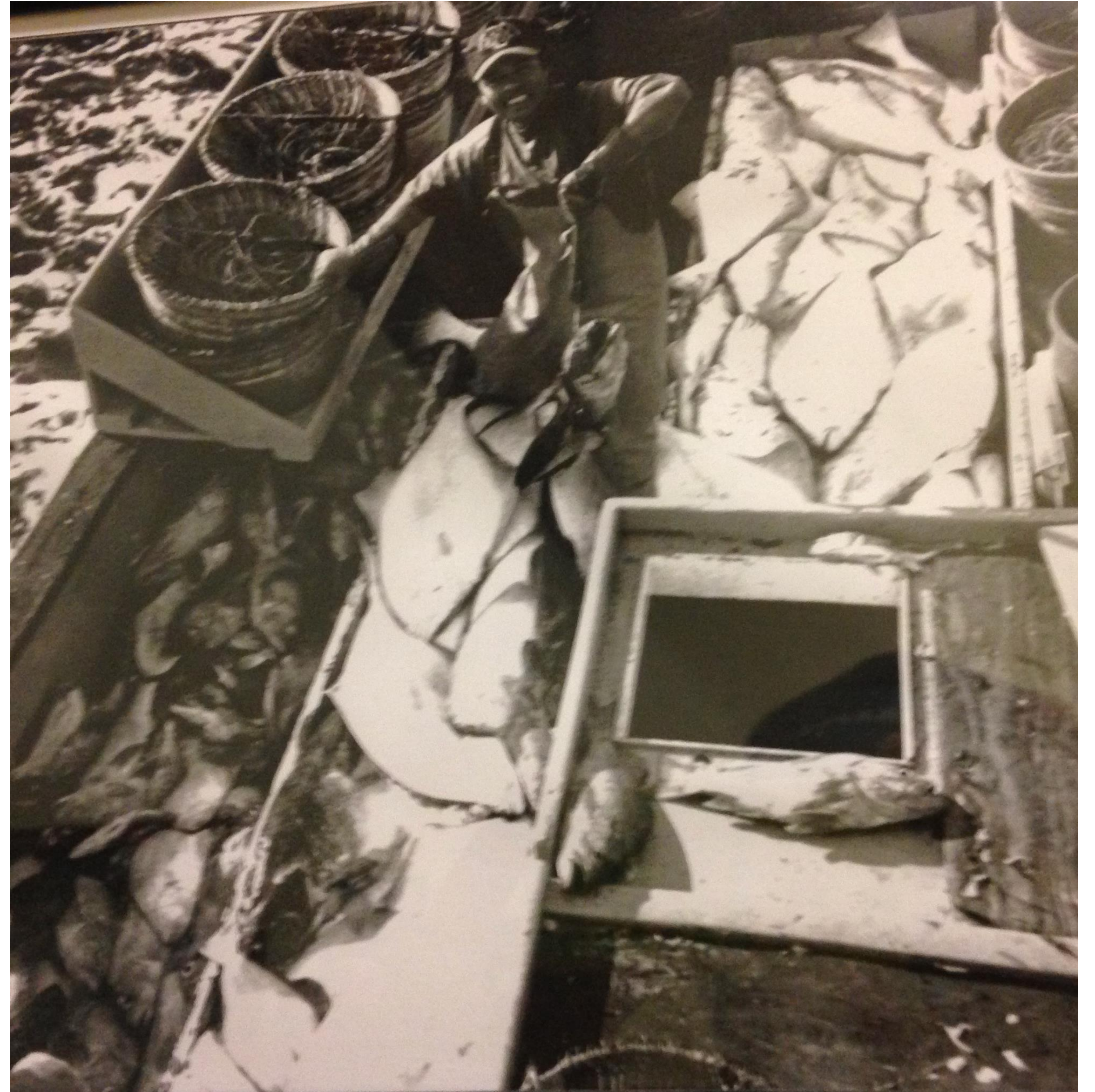
January 26, 2000

- Drastic Reductions in TAC for all sectors to meet strict rebuilding schedules for overfished groundfish
- Creation of Rockfish Conservation Areas based on depth bands
- Moved trawling to deeper water offshore - 9 miles offshore
- Essential Fish Habitat (EFH) expanded
- The Nature Conservancy bought trawl permits in Central California, stripped out sablefish quota and switched to pot gear
- Marine Life Protection Act closed up to 30% of state waters to fishing



# Northern California Halibut Fishery 1960s

F/V Sea Valley, photo from  
Figueredo Family Archive,  
Fort Bragg, CA





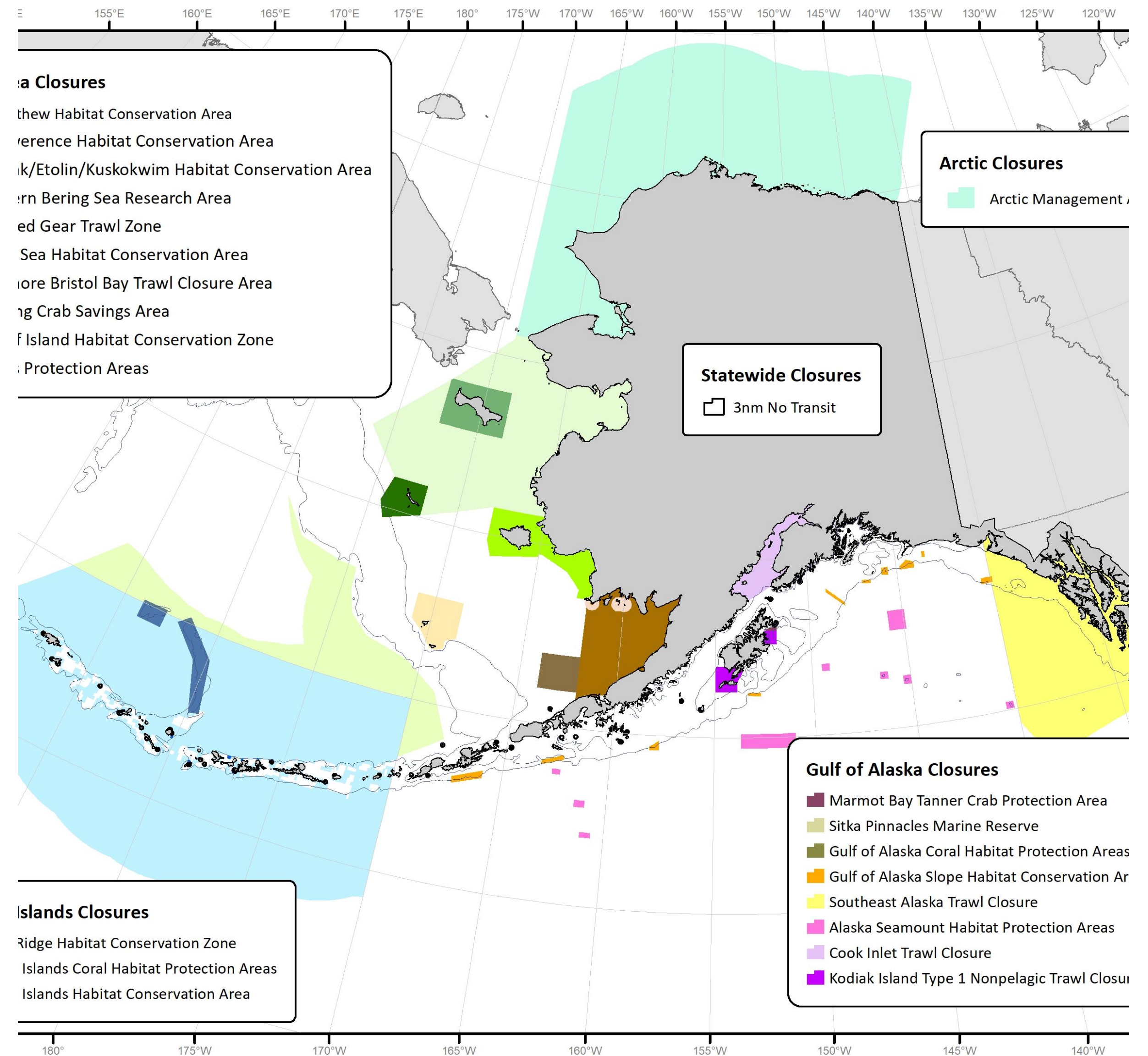
# **What are the existing area closures In Alaska?**

## **Are current trawl area closures serving their intended purposes?**

- Current trawl footprint in Alaska is “2% to 8% of the EEZ”
- Some areas closed to trawl and other bottom contact gear types under Essential Fish Habitat provisions of the Magnuson Stevens Act
- Some areas closed to trawl to address gear and sector conflicts
- Stellar Sea Lion closures

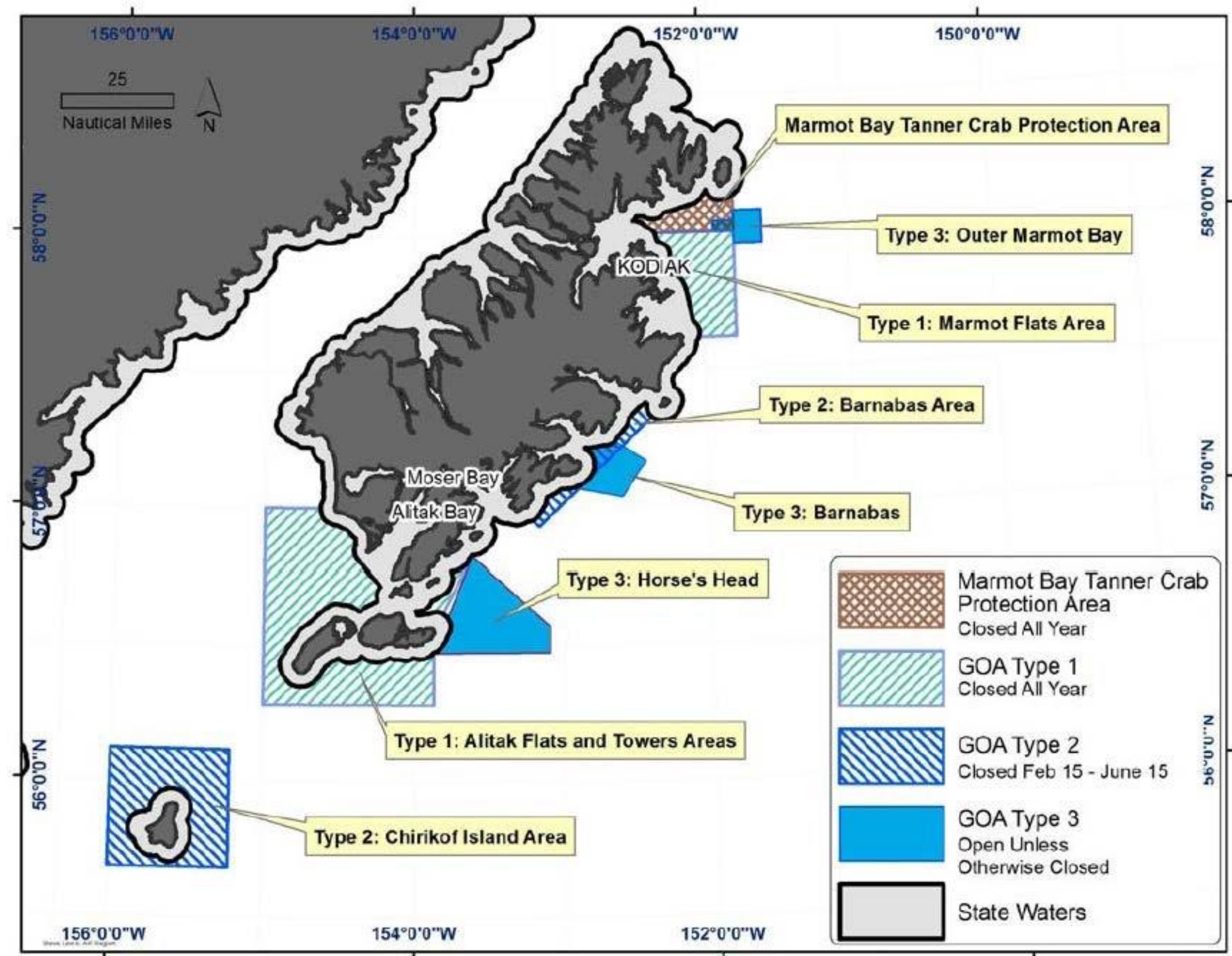
# Year-round groundfish closures in the U.S. Exclusive Economic Zone (EEZ) off Alaska, excluding most SSL closures.

Year-round groundfish closures in the U.S. Exclusive Economic Zone (EEZ) off Alaska, excluding most SSL closures. Status and trends: The percent of area disturbed due to commercial fishing interactions (pelagic and non-pelagic trawl, longline, and pot) decreased from about 10% prior to 2008 to approximately 8% currently.



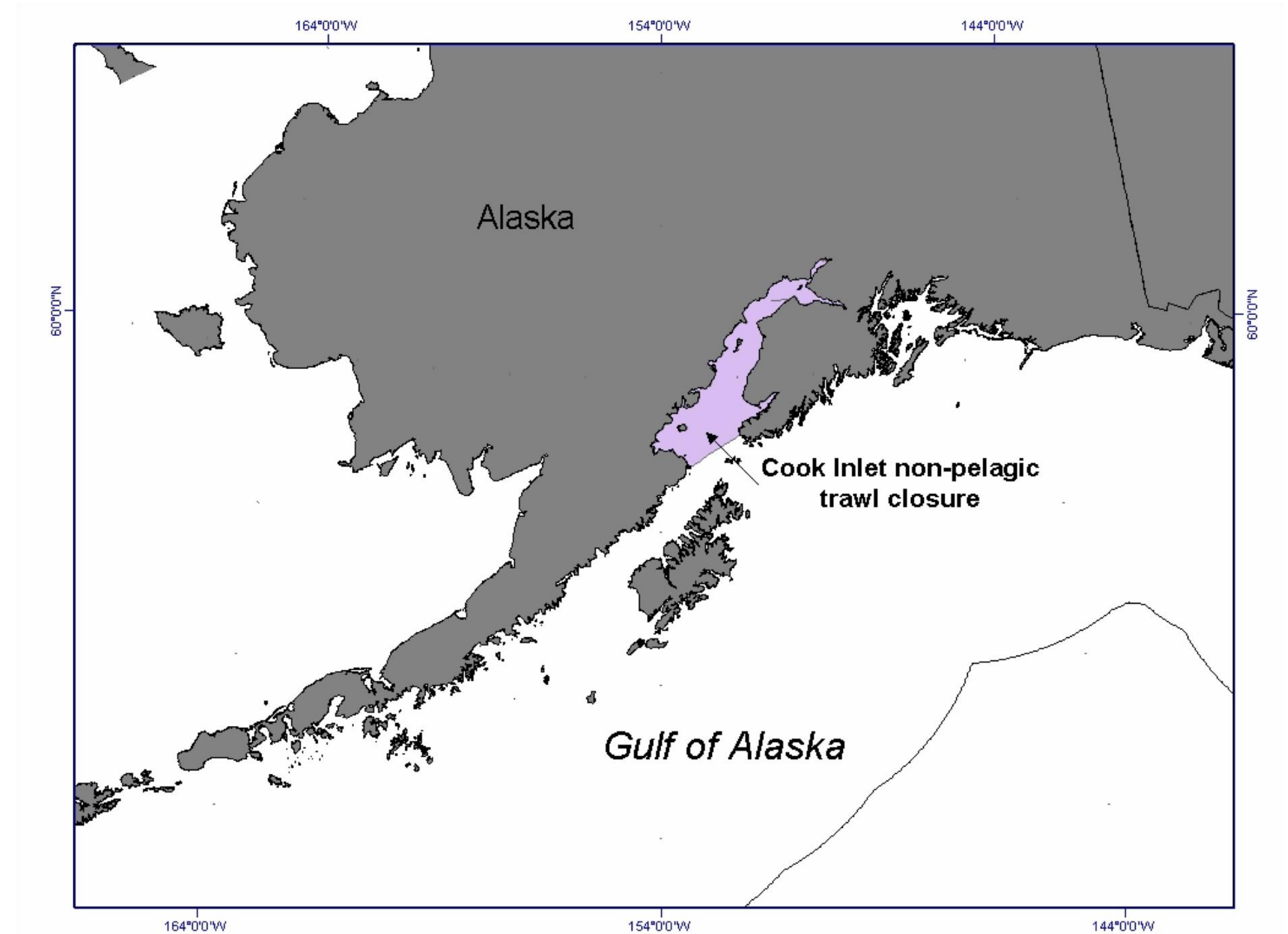


# Kodiak



# Cook Inlet

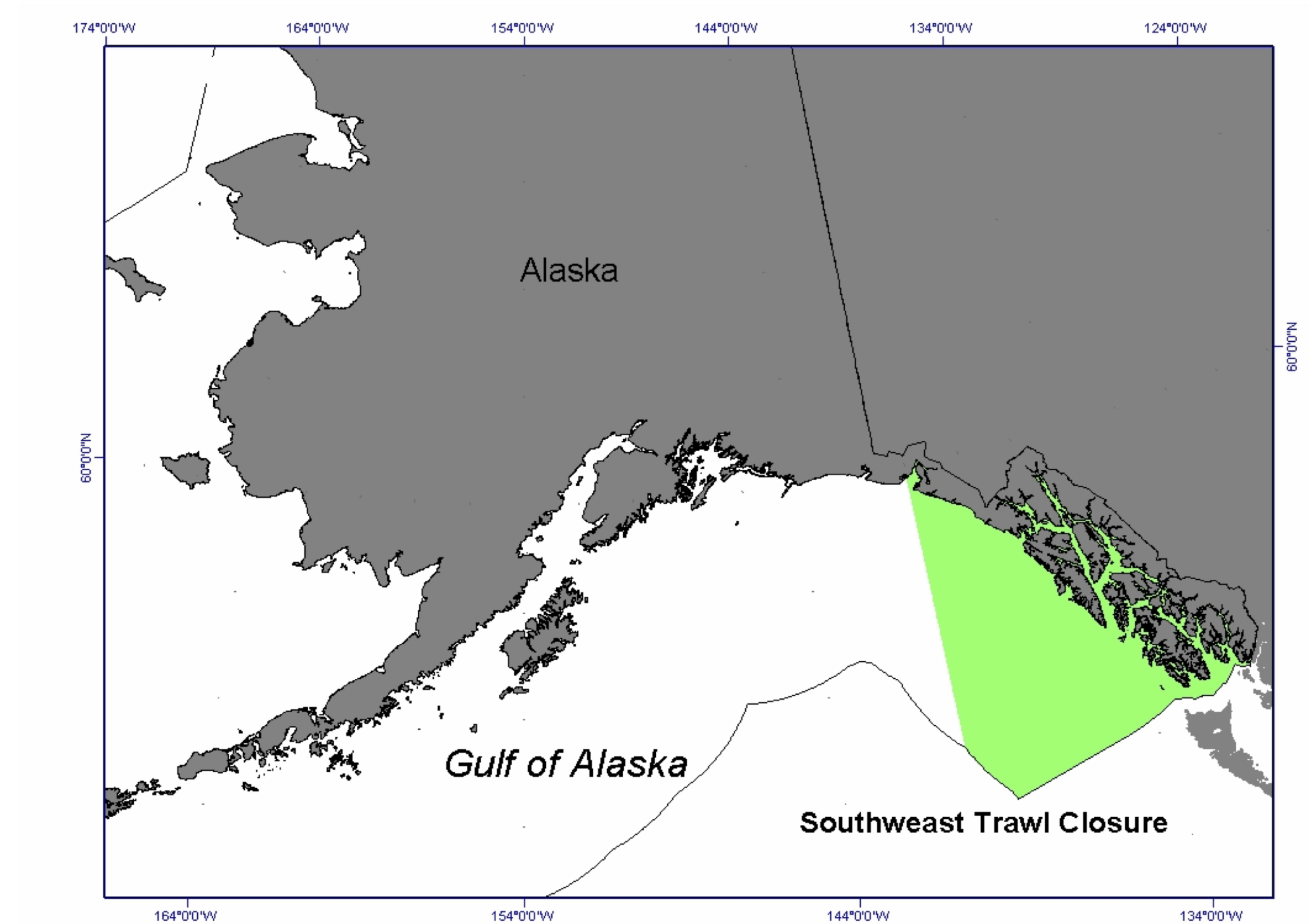
Figure 3-4 Cook Inlet non-pelagic trawl closure area.





# SE Alaska

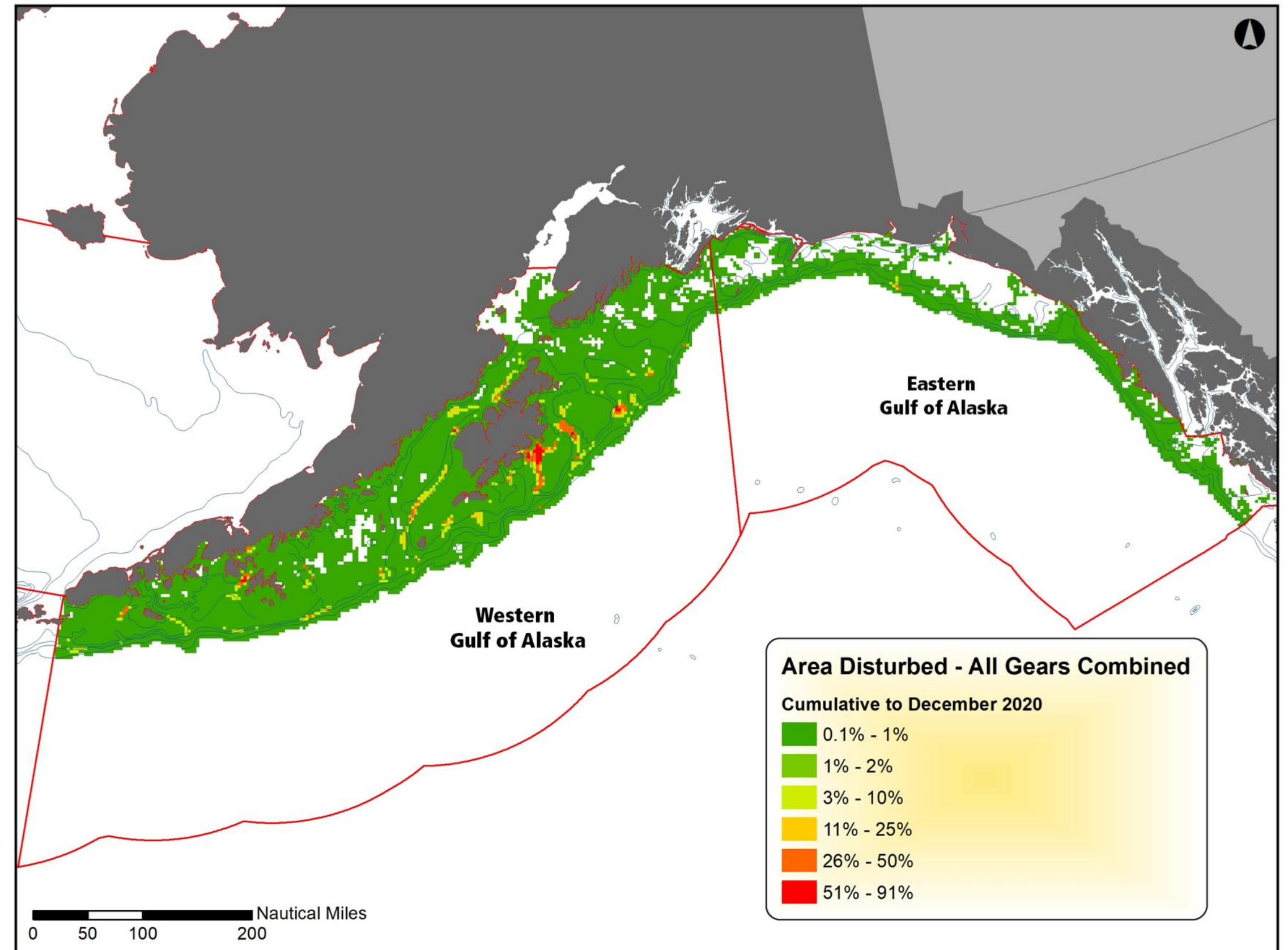
**Figure 3-5 Southeast Outside trawl closure**





# Bottom Contact

Map of percentage area disturbed per grid cell for all gear types. Effects are cumulative and consider impacts and recovery of features from 2003 to 2020.

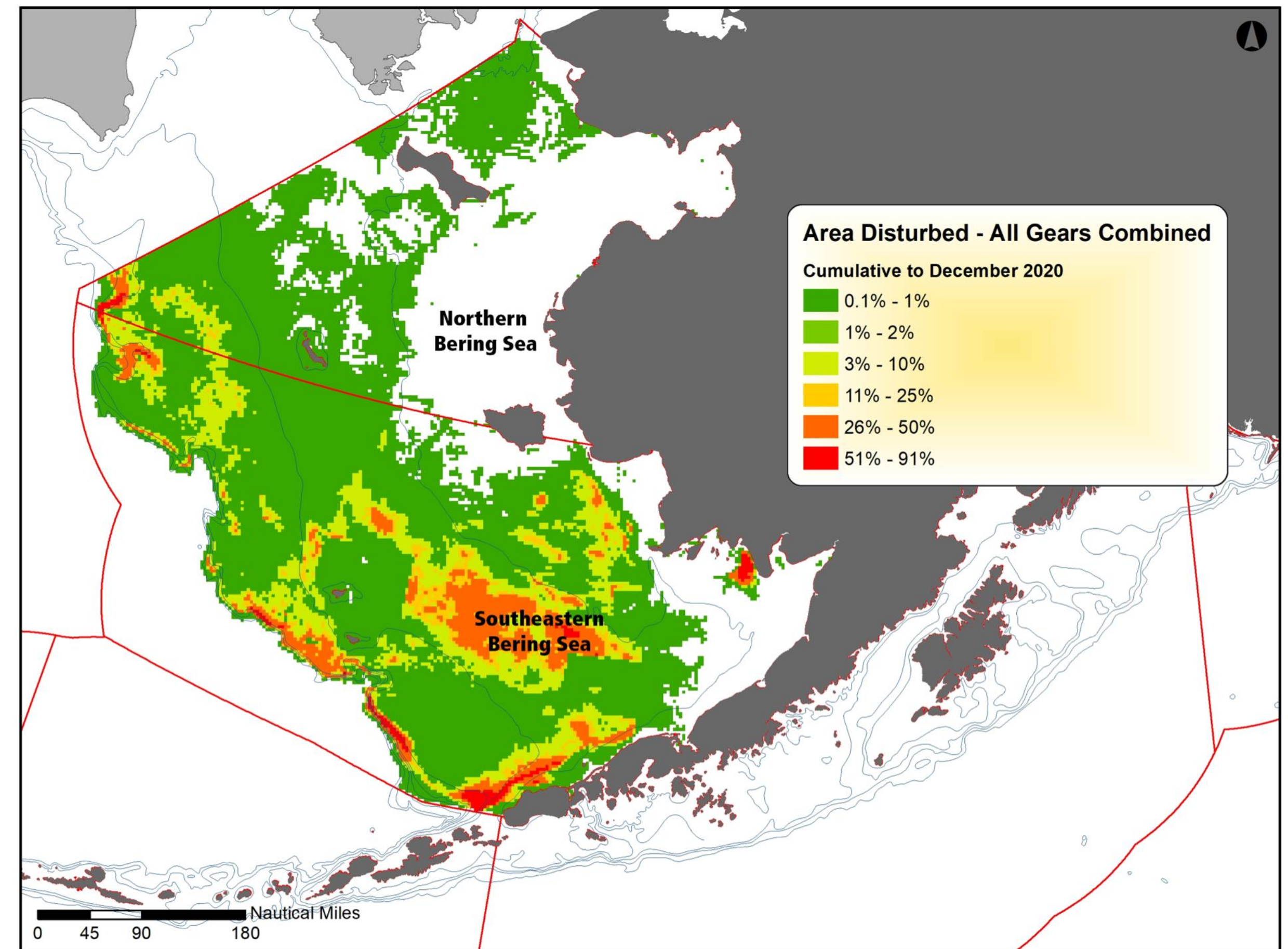




Map of percentage area disturbed per grid cell for all gear types. Effects are cumulative and consider impacts and recovery of features from 2003 to 2020.

## All bottom contact gears

- Map of percentage area disturbed per grid cell for all gear types. Effects are cumulative and consider impacts and recovery of features from 2003 to 2020.





# Conclusion

- Are current area management measures serving their intended purpose?
- Can spatial management in the trawl fishery be improved to reduce bycatch?
- Request N. Council review EFH in light of bycatch concerns